



街角点座標及街区面積計算簿

街区番号 (No. 48-1BL)

点	方向角(A)			距離(S)	Cos A		sin A		X	Y	(3) 複緯距	(4) 複經距	(1) × (4)	(2) × (3)
					(1) S Cos A	(2) S sin A								
A1									0.999624	0.9812155				
A2	225	39	20	2.961	1.726	2.406	0.997898	0.9814561						
B1	359	8	40	31.864	31.860	0.475	0.966208	0.9815036						
B2	30	32	30	13.119	11.299	6.667	0.954739	0.9808369						
C	77	2	50	29.295	6.566	28.550	0.948173	0.9779819						
D	77	52	40	5.110	1.073	4.996	0.947100	0.9774823						
E	77	13	50	6.650	1.470	6.486	0.945630	0.9762007						
F	74	9	10	11.022	9.092	10.292	0.942538	0.9757445						
G	161	20	10	36.719	34.788	11.750	0.977026	0.9745695						
A1	251	27	10	70.101	22.298	66.460	0.999624	0.9812155						
点検点座標計算											Σ			
											倍面積			
											面積	256.4840	㎡	

不二測量株式会社

町地名番

角頂	夾角	邊長	方位角	緯距		經距		複經距	倍面積	
				+	-	+	-		+	-
4										
B2		6.150.30.30		5.097		3.125				
5		4.299.77.2.50		0.964		4.190				
13		6.160.179.27.10			6.160	0.059				
4		7.576.269.12.55			0.101	7.374				
										32.305

換地面積計算用紙 (不正形用)

不二測量株式会社

換地面積計算用紙(不正形用)

角頂	夾角	辺長	方位角	緯距		経距		複経距	倍面積		町地名番
				+	-	+	-		+	-	
3											
B1		5.450	159° 8' 40"	5.449			0.081				
4		6.969	30° 32' 30"	6.002		3.542					
13		7.175	89° 12' 55"	0.101		7.174					
12		11.396	179° 27' 10"		11.395	0.110					
3		10.946	269° 10' 40"		0.157	10.945					
										114.306	

不二測量株式会社

町地名番

角頂	夾角	辺長	方位角	緯距		経距		複経距	倍面積	
				+	-	+	-		+	-
2										
3		4.544	359 8 40	4.543			0.042			
10		10.946	29 10 40	2.157		10.945				
11		4.545	179 27 10		4.545	0.043				
2		10.921	269 11 10		2.155		10.920			
				4.700		10.980				49.525

換地面積計算用紙 (不正形用)

不二測量株式会社





角頂	夾角	辺長	方位角	緯距		經距		復經距	倍面積	
				+	-	+	-		+	-
9										
10		12.160.359	8 40	12.158			22.72			
11		22.215.258	55 50	22.215			22.51			
5		22.101.359	27 10	22.100			22.12			
C		24.336.77	2 50	5.622		24.360				
D		5.110.77	52 40	1.072		4.336				
E		6.650.77	13 50	1.470		6.126				
F		11.222.78	9 10	3.022		10.222				
G		25.054.161	20 10		23.726	2.017				
14		12.572.251	23 20		4.270		12.276			
H		11.850.161	1 40		11.017	2.722				
9		17.485.251	27 10		15.107	15.022				
				55.2240		52.509				1961.764

換地面積計算用紙 (不正形用)

不二測量株式会社





換地面積計算用紙 (不正形用)

角頂	夾角	辺長	方位角	緯距		経距		複経距	倍面積	
				+	-	+	-		+	-
7										
15		11.657	241 1 30	11.025			3.221			
6		6.462	71 23 20	2.050		4.022				
9		11.665	161 20 10		11.052		0.204			
7		6.360	251 27 10		2.023		6.030			
				13.075		7.221				74.543

不二測量株式会社







面積計算簿

番号 (No. 3-1)

点	方位角(A)	距離(S)	cos A	sin A	(1) S cos A	(2) S sin A	x	y	(3) 複経距	(1) × (3)
21										
22	342 56 0	6.923				+ 6.619	- 2.032		- 2.032	- 13.449
23	210 <sup>8.520</sup> <del>314</del>	8.527				+ 0.008	- 8.520		- 12.584	0.125
24	342 35 50	0.800	951453	30.7795		+ 0.761	- 0.246		- 21.350	16.249
19	275 1 32	13.200				+ 1.156	- 13.149		- 34.745	- 40.165
10	359 8 40	1.660				+ 1.660	- 0.025		- 47.919	- 79.545
11	358 55 50	2.735				+ 2.735	- 0.051		- 47.995	- 131.266
5	359 27 10	22.101				+ 22.100	- 0.212		- 48.258	- 1066.501
C	77 2 50	24.996				+ 5.602	+ 24.360		- 24.110	- 135.064
D	77 5 240	5.110				+ 1.073	+ 4.996		+ 5.246	+ 5.628
17	77 13 50	3.950				+ 0.893	+ 3.852		+ 14.094	+ 12.304
18	161 15 43	9.145				- 8.661	+ 2.928		+ 20.884	- 180.876
H	74 9 10	1.640	273073	961993		+ 0.447	+ 1.578		+ 25.400	+ 11.353
点檢点坐標計算									Σ	
									倍面積	m <sup>2</sup>
									面積	坪







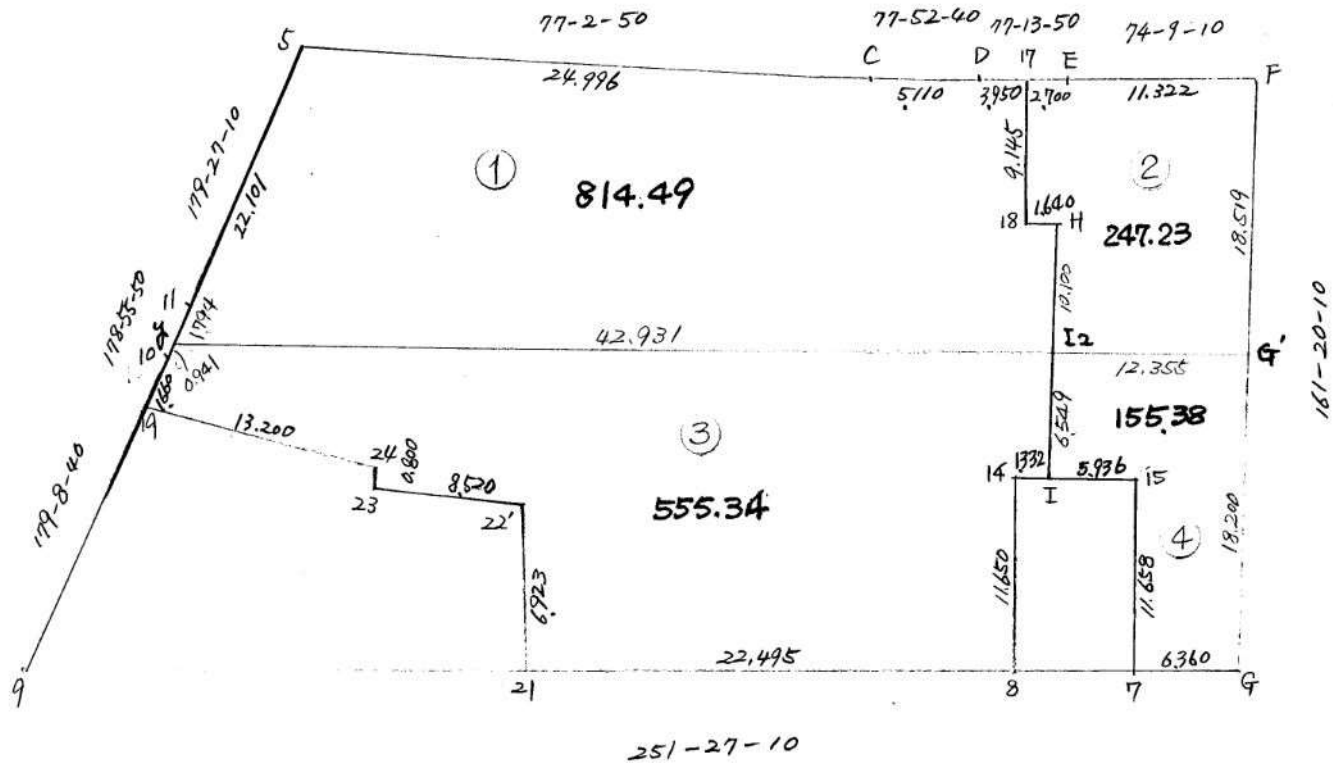


測点	視点	方位角	辺長	Cos	Sin	x	y	点座標		点	備考
								x	y		
	9							3996.768	69503.644	9	
9	19	359-8-40	16.500	9998899	014732	+16.498	-0.246	3980.270	69503.890	19	
9	20	71-27-10	17.000	318086	948062	+5.407	+16.117	3991.361	69787.527	20	
20	21	"	8.000			+2.545	+7.584	3988.816	69779.943	21	
21	22	341-27-10	7.000	948062	318086	+6.636	-2.227	3982.180	69782.170	22	X
								3947.100	69774.823	D	
	0	77-13-50	3.950	221028	975267	+0.873	+3.852	3946.227	69770.971	17	
								3942.528	69757.445	F	
F	16	161-20-10	9.000	947412	320016	-8.527	+2.880	3951.065	69754.565	16	
16	18	254-9-10	14.000	273073	961993	-3.823	-13.468	3954.888	69768.033	18	
16	H	1	12.360			-3.325	-11.890	3954.440	69766.455	H	
19	22	95-1-32	22.000	087600	996156	-1.927	+21.915	3952.197	69781.975	22	
19	24	"	13.200			-1.556	+13.149	3951.426	69790.741	24	
24	23	<del>162</del>	<del>0.800</del>	<del>954226</del>	<del>299087</del>	<del>-0.763</del>	<del>+0.239</del>	<del>3952.789</del>	<del>69790.502</del>	<del>23</del>	
24	23	162-4-25	0.800	951453	307995	-0.761	+0.246	3952.187	69790.495	23	
6	I	251-23-20	12.360	319143	947707	-3.945	-11.714	3970.219	69761.142	I	

342.205.55

# 二点間距離方位角計算用紙

( 19 )	( 22 )	( 17 )	( 18 )
$yx = 3982, 180$ $yx = 3980, 570$ $\Delta y = -1, 910$ $\div \Delta x = \dots$ $\tan \alpha = \dots$ $\alpha = \dots$ $A = \dots$	$yx = 6978, 170$ $yx = 6970, 890$ $\Delta y = -7, 280$ $\div \Delta x = \dots$ $\tan \alpha = \dots$ $\alpha = \dots$ $A = \dots$	$yx = 3954, 888$ $yx = 3946, 227$ $\Delta y = -8, 661$ $\div \Delta x = \dots$ $\tan \alpha = \dots$ $\alpha = \dots$ $A = \dots$	$yx = 6978, 170$ $yx = 6978, 520$ $\Delta y = -3, 350$ $\div \Delta x = \dots$ $\tan \alpha = \dots$ $\alpha = \dots$ $A = \dots$
$(\Sigma \Delta^2) S^2 =$ $S =$	$(\Sigma \Delta^2) S^2 =$ $S =$	$(\Sigma \Delta^2) S^2 =$ $S =$	$(\Sigma \Delta^2) S^2 =$ $S =$
$\Delta x =$ $\div \sqrt{\cos A} = \dots$ $S = \dots$	$\Delta x =$ $\div \sqrt{\cos A} = \dots$ $S = \dots$	$\Delta x =$ $\div \sqrt{\cos A} = \dots$ $S = \dots$	$\Delta x =$ $\div \sqrt{\cos A} = \dots$ $S = \dots$
$yx = 3982, 187$ $yx = 3988, 816$ $\Delta y = +6, 629$ $\div \Delta x = \dots$ $\tan \alpha = \dots$ $\alpha = \dots$ $A = \dots$	$yx = 6978, 195$ $yx = 6979, 940$ $\Delta y = +1, 740$ $\div \Delta x = \dots$ $\tan \alpha = \dots$ $\alpha = \dots$ $A = \dots$	$yx = 3981, 626$ $yx = 3991, 361$ $\Delta y = +9, 735$ $\div \Delta x = \dots$ $\tan \alpha = \dots$ $\alpha = \dots$ $A = \dots$	$yx = 6979, 240$ $yx = 6978, 520$ $\Delta y = -7, 280$ $\div \Delta x = \dots$ $\tan \alpha = \dots$ $\alpha = \dots$ $A = \dots$
$(\Sigma \Delta^2) S^2 =$ $S =$	$(\Sigma \Delta^2) S^2 =$ $S =$	$(\Sigma \Delta^2) S^2 =$ $S =$	$(\Sigma \Delta^2) S^2 =$ $S =$
$\Delta x =$ $\div \sqrt{\cos A} = \dots$ $S = \dots$	$\Delta x =$ $\div \sqrt{\cos A} = \dots$ $S = \dots$	$\Delta x =$ $\div \sqrt{\cos A} = \dots$ $S = \dots$	$\Delta x =$ $\div \sqrt{\cos A} = \dots$ $S = \dots$
$yx = 3982, 187$ $yx = 3982, 187$ $\Delta y = 0, 010$ $\div \Delta x = \dots$ $\tan \alpha = \dots$ $\alpha = \dots$ $A = \dots$	$yx = 6978, 195$ $yx = 6979, 940$ $\Delta y = +1, 740$ $\div \Delta x = \dots$ $\tan \alpha = \dots$ $\alpha = \dots$ $A = \dots$	$yx = 3981, 626$ $yx = 3991, 361$ $\Delta y = +9, 735$ $\div \Delta x = \dots$ $\tan \alpha = \dots$ $\alpha = \dots$ $A = \dots$	$yx = 6978, 145$ $yx = 6978, 645$ $\Delta y = +5, 500$ $\div \Delta x = \dots$ $\tan \alpha = \dots$ $\alpha = \dots$ $A = \dots$
$(\Sigma \Delta^2) S^2 =$ $S =$	$(\Sigma \Delta^2) S^2 =$ $S =$	$(\Sigma \Delta^2) S^2 =$ $S =$	$(\Sigma \Delta^2) S^2 =$ $S =$
$\Delta x =$ $\div \sqrt{\cos A} = \dots$ $S = \dots$	$\Delta x =$ $\div \sqrt{\cos A} = \dots$ $S = \dots$	$\Delta x =$ $\div \sqrt{\cos A} = \dots$ $S = \dots$	$\Delta x =$ $\div \sqrt{\cos A} = \dots$ $S = \dots$
$yx = 3982, 187$ $yx = 3982, 187$ $\Delta y = 0, 010$ $\div \Delta x = \dots$ $\tan \alpha = \dots$ $\alpha = \dots$ $A = \dots$	$yx = 6978, 195$ $yx = 6979, 940$ $\Delta y = +1, 740$ $\div \Delta x = \dots$ $\tan \alpha = \dots$ $\alpha = \dots$ $A = \dots$	$yx = 3981, 626$ $yx = 3991, 361$ $\Delta y = +9, 735$ $\div \Delta x = \dots$ $\tan \alpha = \dots$ $\alpha = \dots$ $A = \dots$	$yx = 6978, 145$ $yx = 6978, 645$ $\Delta y = +5, 500$ $\div \Delta x = \dots$ $\tan \alpha = \dots$ $\alpha = \dots$ $A = \dots$
$(\Sigma \Delta^2) S^2 =$ $S =$	$(\Sigma \Delta^2) S^2 =$ $S =$	$(\Sigma \Delta^2) S^2 =$ $S =$	$(\Sigma \Delta^2) S^2 =$ $S =$
$\Delta x =$ $\div \sqrt{\cos A} = \dots$ $S = \dots$	$\Delta x =$ $\div \sqrt{\cos A} = \dots$ $S = \dots$	$\Delta x =$ $\div \sqrt{\cos A} = \dots$ $S = \dots$	$\Delta x =$ $\div \sqrt{\cos A} = \dots$ $S = \dots$



07.11.14

# 面積計算簿

番号 (No. / )

点	方位角(A)	距離(S)	Cos A	Sin A	(1) S Cos A	(2) S Sin A	X	Y	(3) 複経距	(1) × (3)
11	358 55 50	1.794	999826	018664	+ 1.794	- 0.033			- 0.033	- 0.059
5	359 27 10	22.101	999954	009551	+ 22.100	- 0.212			- 0.278	- 6.143
C	77 2 50	24.996	224148	974555	+ 5602	+ 24.360			+ 23.870	+ 133.719
D	77 52 40	5.110	209998	999702	+ 1.073	+ 4.996			+ 53.226	+ 57.111
17	77 13 50	3.950	221028	975267	+ 0.873	+ 3.852			+ 62.074	+ 54.190
18	161 15 43	9.145	946997	321242	- 8.661	+ 2.938			+ 68.864	- 596.431
H	74 9 10	1.640	273073	961993	+ 0.467	+ 1.578			+ 73.380	+ 32.800
I <sub>2</sub>	161 23 27	10.100	947717	319111	- 9.572	+ 3.223			+ 78.181	- 748.348
19	251 27 10	42.931	318086	948062	- 13.656	- 40.701			+ 40.702	- 555.826
					31.889	40.947				
点檢点坐標計算									Σ T	277.820
									-	1906.807
									倍面積	1628.987
									面積	814.493 <sup>33</sup>

# 面積計算簿

番号 (No. 2)

点	方位角(A)	距離(S)	cos A	sin A	(1) S cos A	(2) S sin A	x	y	(3) 視 經 距	(1) × (3)
I <sub>2</sub>										
H	341 23 27	10.100	947717	319111	+ 9.572	- 3.223			- 3.223	- 30.850
18	254 9 10	1.600	273073	961993	- 0.467	- 1.578			- 8.024	+ 3.586
17	341 15 43	9.145	946997	321242	+ 8.661	- 2.938			- 12.540	- 108.608
F	17 13 50	2.700	221028	975267	+ 0.597	+ 2.633			- 12.845	- 7.668
F	74 9 10	11.322	273073	961993	+ 3.092	+ 10.892			+ 0.680	+ 2.102
G'	161 20 10	18.519	947412	320016	- 17.525	+ 5.926			+ 17.498	- 307.002
I <sub>2</sub>	251 27 10	12.355	218086	948062	- 3.930	- 11.713			+ 11.712	- 46.028
					21.922	19.451				
点 檢 点 坐 標 計 算									Σ +	5.688
									-	500.156
									倍面積	494.468
									面積	247.234

# 面積計算簿

番号 (NO. U)

点	方位角(A)	距離(S)	cos A	sin A	(1) S cos A	(2) S sin A	X	Y	(3) 複經距	(1) × (3)
21										
22	342 56 0	6.923	955964	293484	+ 6.619	- 2.032			- 2.032	- 13.449
23	270 40 2	8.520	001174	999999	+ 0.010	- 8.520			- 12.584	- 0.125
24	342 42 5	0.800	951453	307795	+ 0.761	- 0.246			- 21.350	- 16.247
19	275 13 2	13.200	087600	996156	+ 1.156	- 13.149			- 34.745	- 40.165
10	359 8 40	1.660	999889	014932	+ 1.660	- 0.025			- 47.919	- 79.545
7	358 55 50	0.941	999826	018664	+ 0.941	- 0.017			- 47.961	- 45.131
I <sub>2</sub>	71 29 10	42.931	318086	948062	+ 13.656	+ 40.701			- 7.277	- 99.374
I	161 23 27	6.509	947717	319111	- 6.206	+ 2.090			+ 35.574	- 220.399
14	251 23 20	1.332	319143	947707	- 0.425	- 1.262			+ 36.342	- 15.445
8	161 13 0	11.650	945661	325156	- 11.017	+ 3.788			+ 38.868	- 428.208
21	251 29 10	22.495	318086	948062	- 7.156 <sup>5</sup>	- 21.328			+ 21.328	- 152.601
										24.803 46.579
点檢点坐標計算									Σ	
									倍面積	1110.689
									面積	555.344 <sup>7</sup>

