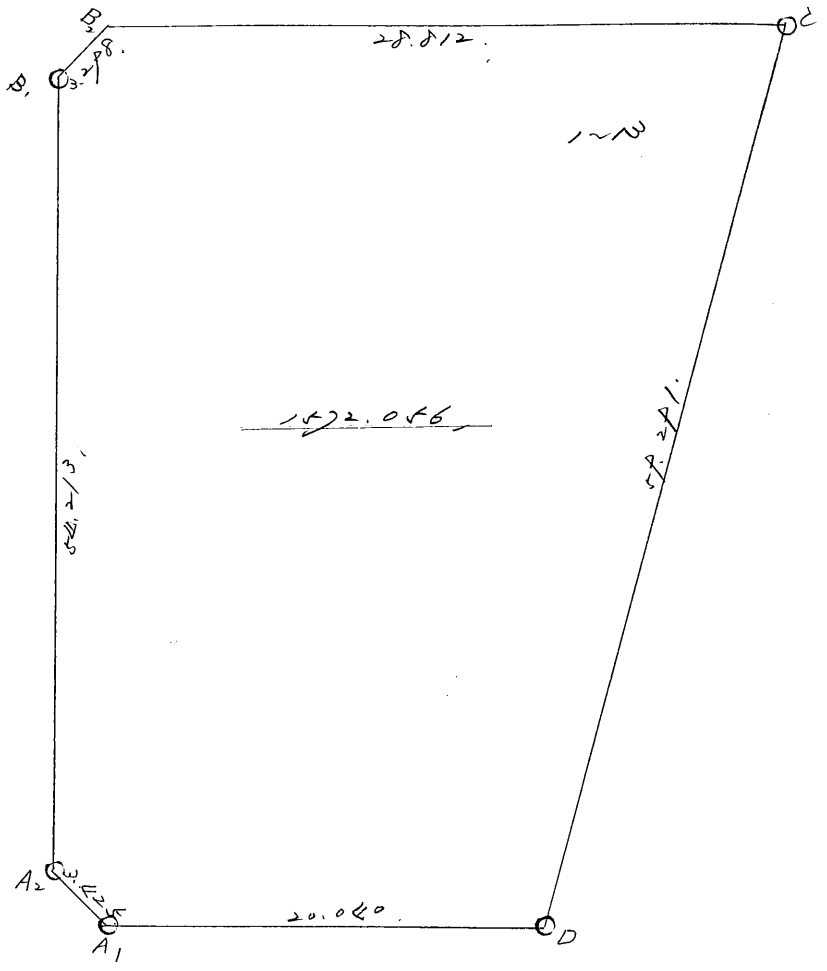
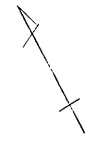


街廓原子一覽表用紙 (No. 1-10)

計算面積 =
 角切面積 =
 換地面積 =

略 図



計算簿

街区番号 (No. 1 ~ 13)

△A	$\frac{\sin A}{(2) S \sin A}$	X	Y	(3) 複緯距	(4) 複経距	(1) × (4)	(2) × (3)
		5202.798	4770.308				
200	1.482	5199.710	4771.790				
300	1.780	5188.078	4758.052				
400	2.199	5167.007	4741.052				
500	2.742	5136.561	4724.171				
600	3.416	5097.261	4741.308				
700	4.229						
800	5.196						
900	6.339						
Σ							
					倍面積		
					面積		1572.056

5202.798 S
 4770.308 S
 5199.710 S
 4771.790 S
 5148.378 S
 4754.352 S
 5147.007 S
 5751.353 S
 5156.561 S
 4724.171 S
 5209.261 S
 4751.339 S
 2 S
 0 S
 -1572.0563 S