

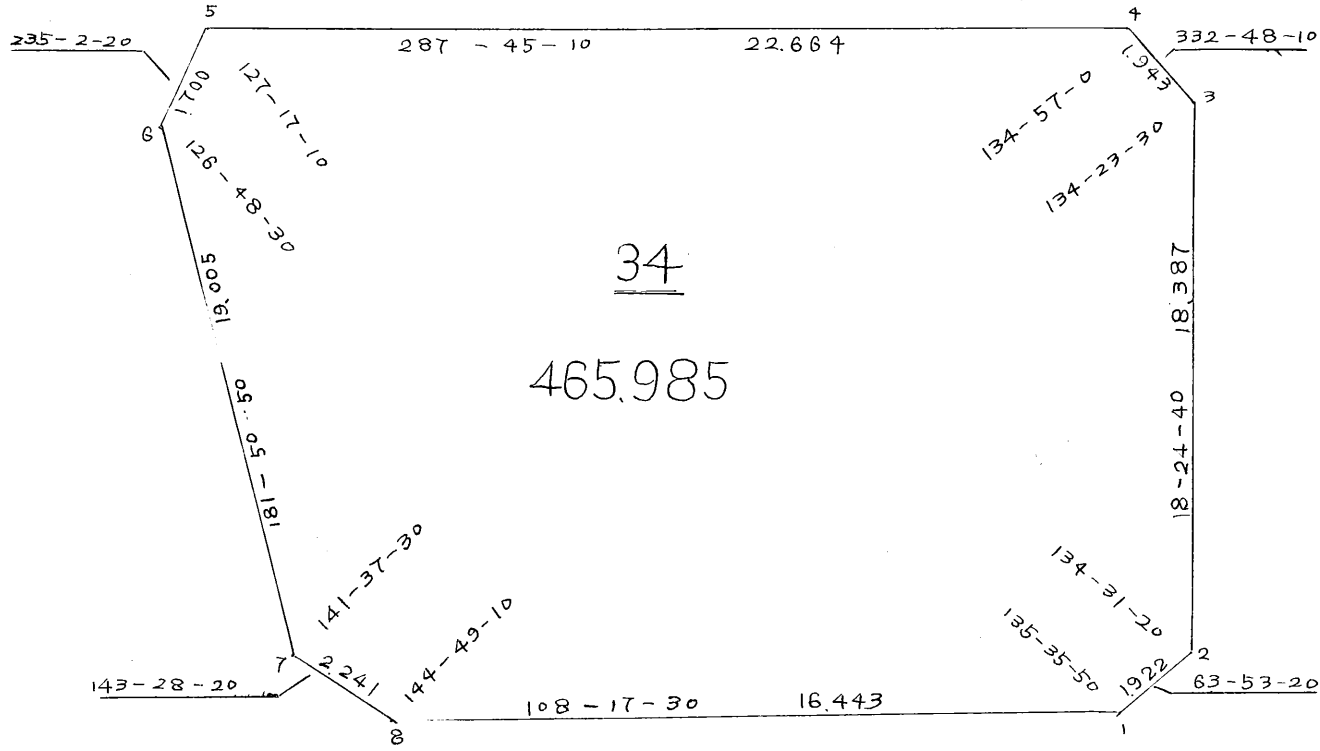


街廓原子一覽表用紙 (No. 34BL)

略

☒

計算面積 =  坪  
 角切面積 =   
 換地面積 = 465.985



# 街廓点坐標及街廓面積計算簿

街廓番号(No. **34 B.L**)

点	方位角(A)	距離(S)	cosA	sinA	x	y	(3) 複緯距	(4) 複經距	(1) × (4)	(2) × (3)
			(1) S cosA	(2) S sinA						
1					387.244	238.705				
2	63-53-20	1.922	+ 0.886	+ 1.726	388.090	240.431	+ 0.846	+ 1.726	+ 1.460	+ 1.460
3	18-24-40	18.387	+ 17.446	+ 5.807	405.536	246.238	+ 19.138	+ 9.249	+ 161.532	+ 111.134
4	332-48-10	1.943	+ 1.728	- 0.488	407.264	245.350	+ 38.312	+ 14.178	+ 24.500	- 34.021
5	257-45-10	22.664	+ 6.911	- 21.515	414.175	223.765	+ 46.951	- 8.295	- 57.327	- 1013.437
6	235-2-20	1.700	- 0.274	- 1.393	413.201	222.372	+ 52.888	- 31.273	+ 30.460	- 73.673
7	181-54-40	19.005	- 18.895	- 0.613	394.206	221.759	+ 32.919	- 33.279	+ 632.135	- 20.179
8	143-28-20	2.241	- 1.801	+ 1.334	392.405	222.093	+ 12.123	- 22.558	+ 58.637	+ 16.172
1	108-17-30	16.443	- 5.161	+ 15.612	387.244	238.705	+ 5.161	- 15.612	+ 80.574	+ 80.574
点檢点坐標計算								Σ	989.298	1161.310
									57.327	209.340
								倍面積	931.971	931.970
								面積	465.986	465.985