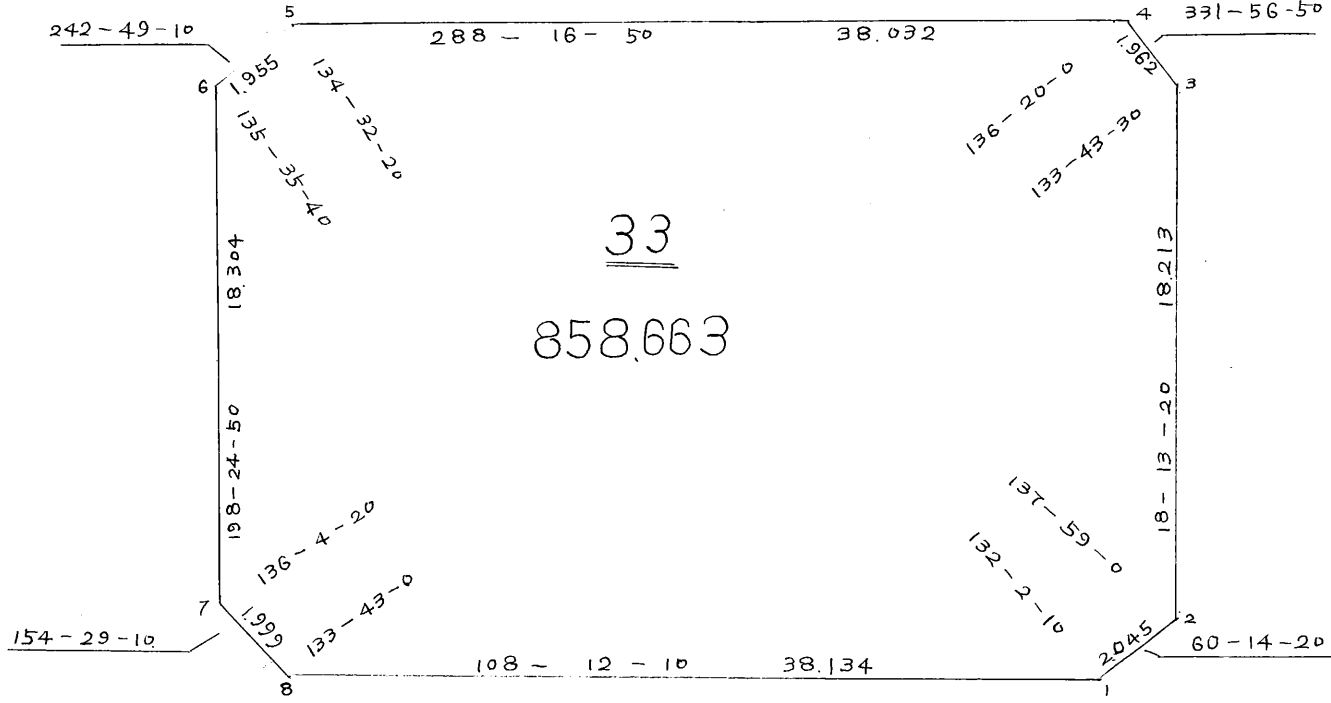


街廓原子一覽表用紙 (N^o 33BL)

略

図

計算面積 = 坪
 角切面積 =
 換地面積 = 858.663



15

街廓点坐標及街廓面積計算簿

街廓番号(No. **33BL**)

点	方位角(A)	距離(S)	cosA	sinA	x	y	(3) 複緯距	(4) 複經距	(1) × (4)	(2) × (3)
			(1) S cosA	(2) S sinA						
1					373.416	280.674				
2	60-14-20	2.044	+ 1.014	+ 1.774	374.431	282.449	+ 1.014	+ 1.774	+ 1.802	+ 1.802
3	10-13-20	18.213	+ 17.300	+ 4.694	391.731	288.144	+ 19.330	+ 9.244	+ 159.938	+ 110.084
4	331-44-40	1.962	+ 1.732	- 0.923	393.463	287.221	+ 38.362	+ 10.017	+ 24.277	- 34.408
5	288-16-40	38.032	+ 11.929	- 36.113	404.392	241.108	+ 42.023	- 23.019	- 274.494	- 1878.706
6	242-48-10	1.944	- 0.893	- 1.739	404.499	249.369	+ 63.049	- 60.871	+ 44.348	- 109.660
7	198-24-40	18.304	- 17.267	- 4.782	387.132	243.487	+ 44.799	- 68.392	+ 187.764	- 259.028
8	144-38-10	1.899	- 1.204	+ 0.861	384.328	244.448	+ 24.628	- 73.313	+ 192.247	+ 22.066
1	108-12-10	38.134	- 11.912	+ 36.226	373.416	280.674	+ 11.912	- 36.226	+ 431.426	+ 431.426
点檢点坐標計算								Σ	1991.920	2282.802
									274.494	464.476
								倍面積	1717.326	1717.326
								面積	848.663	848.663