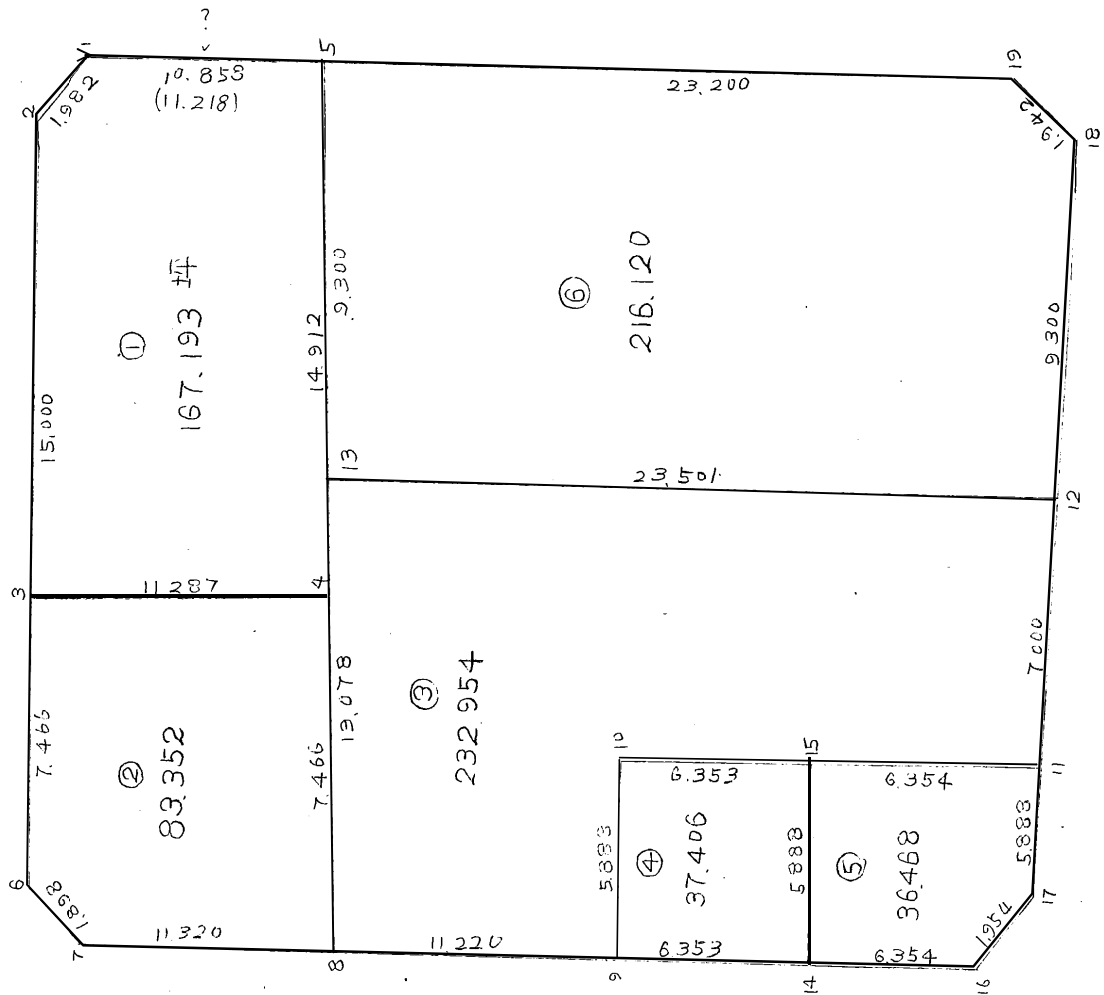


單位：面積 坪
距離 間

4 B. L



街廓諸元計算用紙

街廓番号 (NO. **4B.L**)

中心点番号	c5	c6	c7	c5'			
夹角 $\alpha =$	22 16 0	87 18 30	90 25 0	89 50 30			
(街路半幅) $l_1 =$	1.650	2.200	1.650	1.650			
$\sin \alpha =$	0.379218	0.998897	0.999948	0.999996			
$(l_1 \div \sin \alpha) L_1 =$	1.651	2.202	1.650	1.650			
$\cos \alpha =$	0.923850	0.046961	0.010181	0.002763			
$(L_1 \times \cos \alpha) d_1 =$	-0.065	+0.103	-0.017	+0.004			
(街路半幅) $l_2 =$	2.200	1.650	1.650	1.650			
$\sin \alpha =$							
$(l_2 \div \sin \alpha) L_2 =$	2.202	1.652	1.650	1.650			
$\cos \alpha =$							
$(L_2 \times \cos \alpha) d_2 =$	-0.087	+0.078	-0.017	+0.004			
$\frac{\alpha}{2} =$	46-8-0	43-39-15	45-17-30	44-55-15			
(角切長の $\frac{1}{2}$) $C^{20} =$	1.982	1.898	1.944	1.942			
	0.971	0.949	0.977	0.971			
$\sin \frac{\alpha}{2} =$	0.720944	0.690304	0.710647	0.706129			
(尊除長) $C \div \sin \frac{\alpha}{2} =$	1.375	1.375	1.375	1.375			
$\cot \frac{\alpha}{2} =$	0.961202	1.048118	0.989870	1.002768			
(面積) $C^2 \times \cot \frac{\alpha}{2} =$	0.944	0.944	0.944	0.944			

街廓点坐標及街廓面積計算簿

街廓番号(N^o 4B.L)

点	方位角(A)	距離(S)	CoA	SinA	X	Y	(3) 複緯距	(4) 複經距	(1) × (4)	(2) × (3)	
			(1) S CoA	(2) S SinA							
			P2647	30407P	+68.372	496.498					
(c5)	197 42 10	2.202	-2.098	-0.670	+67.274	493.828					
			34151P	P3987P							
(c5)	289 18 10	1.851	+0.464	-1.442	+67.838	492.276					
			34151P	P3987P							
(c6)	"	22.466	+7.672	-21.115	+75.510	471.761	+7.672	-21.115	-161.994	-161.994	
			P4876	P7005							
(c7)	197 16 40	34.247	-33.648	-10.468	+41.845	460.692	-18.311	-52.699	+1773.484	+191.698	
			306711	P1803							
(c7)	107 41 40	22.188	-6.805	+21.119	+35.050	481.811	-48.771	-42.049	+286.163	-1241.185	
			P2647	30407P							
(c7)	17 42 10	34.418	+32.788	+10.468	+67.838	492.276	-32.788	-10.468	-343.126	-343.126	
点檢点坐標計算											
							Σ		-505.120	+191.698	
									+2049.728	-1746.305	
07	107 41 40	1.850	306711	P1803	+40.784	458.632	倍面積		1544.608	1544.607	
					-0.506	+1.470	面積		777.304	777.304	
					+40.279	460.202					
(c7)	17 16 40	1.650	P4876	P7005							
					+1.476	+0.490					
					+41.845	460.692					
									777.304 坪		

