

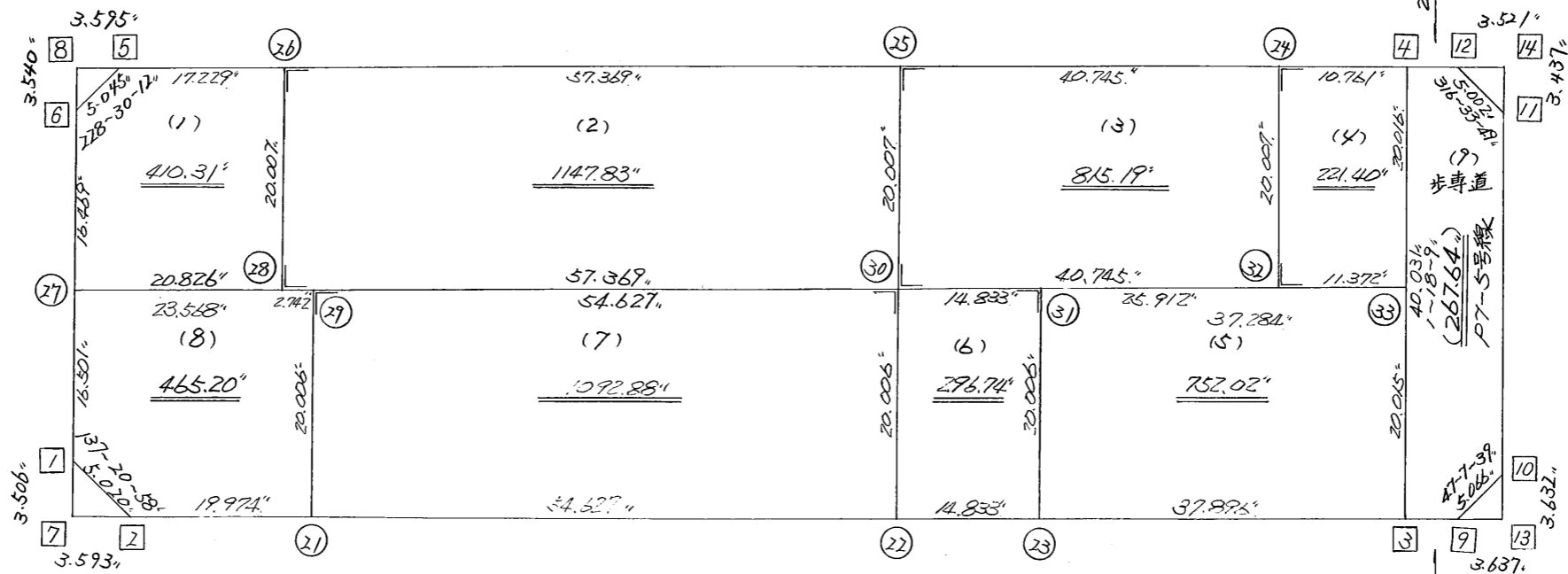
略 図

街区面積 = 5201.58 m<sup>2</sup>  
 画地面積 = 5201.57 m<sup>2</sup>  
 (歩専道 = 267.64)

273-3-9  
126.104'

183-3-11  
32.970'

32.927  
1-16-57'



127.330  
93-3-5



街区点番号 1 ~ 14 筆界点番号 21 ~ 33 画地番号 ( 1 ) ~ ( 9 )

\*\*\* ムセキ ケイサン (ハ"イオウキヨホウ) \*\*\*

チクメイ ... ミヤコタ"チク トチクカクセイリシ"キ"ヨウ

セイリ NO... 112BL

NO.	NO.	ANGLE	AZIMUTH	LENGTH	DX	*	DY	*	X	Y	DMD	2A	カ-フ"ムセキ
112BL- 6	112BL- 1		183 3 11						-131088.527	-69161.457			
112BL- 1	112BL- 2	134 17 47	137 20 58	5.020	-3.692	0	3.401	0	-131092.219	-69158.056	1.645	-6.073340	
112BL- 2	112BL- 3	135 42 7	93 3 5	127.330	-6.778	0	127.149	0	-131098.997	-69030.907	132.195	-896.017710	
112BL- 3	112BL- 4	88 15 4	1 18 9	40.031	40.021	0	0.910	0	-131058.976	-69029.997	260.254	10415.625334	
112BL- 4	112BL- 5	91 45 0	273 3 9	126.104	6.715	0	-125.925	0	-131052.261	-69155.922	135.239	908.129885	
112BL- 5	112BL- 6	135 27 3	228 30 12	5.045	-3.343	0	-3.779	0	-131055.604	-69159.701	5.535	-18.503505	
112BL- 6	112BL- 1	134 32 59	183 3 11	32.970	-32.923	0	-1.756	0	-131088.527	-69161.457	0.000	0.000000	
TOTAL..	ソツカスウ= 6	720 0 0		336.500	0.000	0	0.000	0			ハ"イムセキ=	10403.160664	
											1/2=	5201.58	+0.00
											ムセキ=	5201.58	

\*\*\* メンセキ ケイサン (ハイオウキヨホウ) \*\*\*

チクメイ ... ミヤコタチク トチクカクセイリシキヨウ

セイリ NO... 112BL(9)ホセツ

NO.	NO.	ANGLE	AZIMUTH	LENGTH	DX	*	DY	*	X	Y	DMD	2A	カ-フメンセキ
112BL- 4	112BL- 3		181 18 9						-131098.997	-69030.907			
112BL- 3	112BL- 9	91 35 56	92 54 5	3.378	-0.171	0	3.374	0	-131099.168	-69027.533	2.464	-0.421344	
112BL- 9	112BL-10	134 13 34	47 7 39	5.066	3.447	0	3.713	0	-131095.721	-69023.820	9.551	32.922297	
112BL-10	112BL-11	134 9 18	1 16 57	32.927	32.919	0	0.737	0	-131062.802	-69023.083	14.001	460.898919	
112BL-11	112BL-12	135 16 52	316 33 49	5.002	3.632	0	-3.439	0	-131059.170	-69026.522	11.299	41.037968	
112BL-12	112BL- 4	136 37 54	273 11 43	3.480	0.194	0	-3.475	0	-131058.976	-69029.997	4.385	0.850690	
112BL- 4	112BL- 3	88 6 26	181 18 9	40.031	-40.021	0	-0.910	0	-131098.997	-69030.907	0.000	0.000000	
TOTAL..	ソツカクスク = 6	720 0 0		89.884	0.000	0	0.000	0				535.288530	
											1/2 =	267.64	+0.00
											メンセキ =	267.64	

\*\*\* メンセキ ケイサン (ハイオウキヨホウ) \*\*\*

チクメイ ... ミヤコタチク トチクカクセイリシキヨウ

レイ NO... 112BL(1)✓

NO.	NO.	ANGLE	AZIMUTH	LENGTH	DX	*	DY	*	X	Y	DMD	2A	カ-フメンセキ
112BL- 6	112BL-27✓		183 3 11						-131072.049	-69160.578			
112BL-27	112BL-28✓	89 59 58	93 3 9✓	20.826✓	-1.109	0	20.796	0	-131073.158	-69139.782	19.919	-22.090171	
112BL-28	112BL-26✓	90 0 0	3 3 9✓	20.007✓	19.979	1	1.065	0	-131053.178	-69138.717	41.780	834.764400	
112BL-26	112BL- 5✓	90 0 0	273 3 9✓	17.229✓	0.917	0	-17.205	0	-131052.261	-69155.922	25.640	23.511880	
112BL- 5	112BL- 6✓	135 27 3	228 30 12✓	5.045✓	-3.343	0	-3.779	0	-131055.604	-69159.701	4.656	-15.565008	
112BL- 6	112BL-27✓	134 32 59	183 3 11✓	16.469✓	-16.446	1	-0.877	0	-131072.049	-69160.578	0.000	0.000000	
TOTAL..	ソツカクスウ= 5	540 0 0		79.576	-0.002	2✓	0.000	0✓			ハイメンセキ=	820.621101	
											1/2=	410.31	+0.00
											メンセキ=	410.31✓	

レイ NO... 112BL(2)✓

112BL-26	112BL-28✓		183 3 9						-131073.158	-69139.782			
112BL-28✓	112BL-30✓	90 0 0	93 3 9✓	57.369✓	-3.055	1	57.288	-1	-131076.212	-69082.495	56.222	-171.701988	
112BL-30	112BL-25✓	90 0 0	3 3 9✓	20.007✓	19.979	0	1.065	1	-131056.233	-69081.429	114.575	2289.093925	
112BL-25	112BL-26✓	90 0 0	273 3 9✓	57.369✓	3.055	0	-57.288	0	-131053.178	-69138.717	58.353	178.268415	
112BL-26	112BL-28✓	90 0 0	183 3 9✓	20.007✓	-19.979	-1	-1.065	0	-131073.158	-69139.782	0.000	0.000000	
TOTAL..	ソツカクスウ= 4	360 0 0		154.752	0.000	0✓	0.000	0✓			ハイメンセキ=	2295.660352	
											1/2=	1147.83	+0.00
											メンセキ=	1147.83✓	

\*\*\* メンセキ ケイサン (ハイイウキヨホウ) \*\*\*

チクメイ ... ミヤコタチク トチクカクセイリシキヨウ

レイ NO... 112BL(3)✓

NO.	NO.	ANGLE	AZIMUTH			LENGTH	DX	*	DY	*	X	Y	DMD	2A	カ-フメンセキ
112BL-25	112BL-30✓		183	3	9						-131076.212	-69082.495			
112BL-30	112BL-32✓	90 0 0	93	3	9✓	40.745✓	-2.170	0	40.687	0	-131078.382	-69041.808	39.621	-85.977570	
112BL-32	112BL-24✓	90 0 0	3	3	9✓	20.007✓	19.979	0	1.065	1	-131058.403	-69040.742	81.374	1625.771146	
112BL-24	112BL-25✓	90 0 0	273	3	9✓	40.745✓	2.170	0	-40.687	0	-131056.233	-69081.429	41.753	90.604010	
112BL-25	112BL-30✓	90 0 0	183	3	9✓	20.007✓	-19.979	0	-1.065	-1	-131076.212	-69082.495	0.000	0.000000	
TOTAL..	ソツカクスウ= 4	360 0 0				121.504	0.000	0✓	0.000	0✓			ハイイメンセキ=	1630.397586	
													1/2=	815.19	+0.00
													メンセキ=	815.19✓	

レイ NO... 112BL(4)✓

112BL-24	112BL-32✓		183	3	9						-131078.382	-69041.808			
112BL-32	112BL-33✓	90 0 0	93	3	9✓	11.372✓	-0.606	1	11.356	0	-131078.987	-69030.452	10.290	-6.225450	
112BL-33	112BL-4✓	88 15 0	1	18	9✓	20.016✓	20.011	0	0.455	0	-131058.976	-69029.997	22.101	442.263111	
112BL-4	112BL-24✓	91 45 0	273	3	9✓	10.761✓	0.573	0	-10.746	1	-131058.403	-69040.742	11.811	6.767703	
112BL-24	112BL-32✓	90 0 0	183	3	9✓	20.007✓	-19.979	0	-1.065	-1	-131078.382	-69041.808	0.000	0.000000	
TOTAL..	ソツカクスウ= 4	360 0 0				62.156	-0.001	1✓	0.000	0✓			ハイイメンセキ=	442.805364	
													1/2=	221.40	+0.00
													メンセキ=	221.40✓	

\*\*\* メンセキ ケイサン (ハイイウキヨホウ) \*\*\*

チクメイ ... ミヤコタチク トチクカクセイリシキヨウ

レイ NO... 112BL(5)✓

NO.	NO.	ANGLE	AZIMUTH	LENGTH	DX	*	DY	*	X	Y	DMD	2A	カ-フメンセキ
112BL-31	112BL-23✓		183 3 9						-131096.980	-69068.749			
112BL-23	112BL-3✓	89 59 56	93 3 5✓	37.896✓	-2.017	0	37.842	0	-131098.997	-69030.907	36.776	-74.177192	
112BL-3	112BL-33✓	88 15 4	1 18 9✓	20.015✓	20.010	0	0.455	0	-131078.987	-69030.452	75.073	1502.210730	
112BL-33	112BL-31✓	91 45 0	273 3 9✓	37.284✓	1.985	0	-37.231	0	-131077.002	-69067.683	38.297	76.019545	
112BL-31	112BL-23✓	90 0 0	183 3 9✓	20.006✓	-19.978	0	-1.065	-1	-131096.980	-69068.749	0.000	0.000000	
TOTAL..	ソツカクスウ= 4	360 0 0		115.201	0.000	0✓	0.001	-1✓			ハイメンセキ=	1504.053083	
											1/2=	752.02	+0.00
											メンセキ=	752.02✓	

レイ NO... 112BL(6)✓

112BL-30	112BL-22✓		183 3 9						-131096.190	-69083.560			
112BL-22	112BL-23✓	89 59 56	93 3 5✓	14.833✓	-0.790	0	14.812	-1	-131096.980	-69068.749	13.746	-10.859340	
112BL-23	112BL-31✓	90 0 4	3 3 9✓	20.006✓	19.978	0	1.065	1	-131077.002	-69067.683	29.623	591.808294	
112BL-31	112BL-30✓	90 0 0	273 3 9✓	14.833✓	0.790	0	-14.812	0	-131076.212	-69082.495	15.877	12.542830	
112BL-30	112BL-22✓	90 0 0	183 3 9✓	20.006✓	-19.978	0	-1.065	0	-131096.190	-69083.560	0.000	0.000000	
TOTAL..	ソツカクスウ= 4	360 0 0		69.678	0.000	0✓	0.000	0✓			ハイメンセキ=	593.491784	
											1/2=	296.74	+0.00
											メンセキ=	296.74✓	

\*\*\* メンセキ ケイサン (ハ イオウキヨホウ) \*\*\*

チクメイ ... ミヤコタチク トチクカクセイリシキヨウ

セリ NO... 112BL(7)✓

NO.	NO.	ANGLE	AZIMUTH			LENGTH	DX	*	DY	*	X	Y	DMD	2A	カ-フメンセキ
112BL-29	112BL-21✓		183	3	9						-131093.282	-69138.110			
112BL-21	112BL-22✓	89 59 56	93	3	5✓	54.627✓	-2.908	0	54.550	0	-131096.190	-69083.560	53.484	-155.531472	
112BL-22	112BL-30✓	90 0 4	3	3	9✓	20.006✓	19.978	0	1.065	0	-131076.212	-69082.495	109.099	2179.579822	
112BL-30	112BL-29✓	90 0 0	273	3	9✓	54.627✓	2.909	-1	-54.549	0	-131073.304	-69137.044	55.615	161.728420	
112BL-29	112BL-21✓	90 0 0	183	3	9✓	20.006✓	-19.978	0	-1.065	-1	-131093.282	-69138.110	0.000	0.000000	
TOTAL..	ソツカクスウ= 4	360 0 0				149.266	0.001	-1✓	0.001	-1✓			ハ イメンセキ=	2185.776770	
													1/2=	1092.88	+0.00
													メンセキ=	1092.88✓	

セリ NO... 112BL(8)✓

112BL-27	112BL- 1✓		183	3	11						-131088.527	-69161.457			
112BL- 1	112BL- 2✓	134 17 47	137	20	58✓	5.020✓	-3.692	0	3.401	0	-131092.219	-69158.056	2.522	-9.311224	
112BL- 2	112BL-21✓	135 42 7	93	3	5✓	19.974✓	-1.063	0	19.946	0	-131093.282	-69138.110	25.869	-27.498747	
112BL-21	112BL-29✓	90 0 4	3	3	9✓	20.006✓	19.978	0	1.065	1	-131073.304	-69137.044	46.881	936.588618	
112BL-29	112BL-27✓	90 0 0	273	3	9✓	23.568✓	1.255	0	-23.535	1	-131072.049	-69160.578	24.413	30.638315	
112BL-27	112BL- 1✓	90 0 2	183	3	11✓	16.501✓	-16.478	0	-0.879	0	-131088.527	-69161.457	0.000	0.000000	
TOTAL..	ソツカクスウ= 5	540 0 0				85.069	0.000	0✓	-0.002	2✓			ハ イメンセキ=	930.416962	
													1/2=	465.20	+0.00
													メンセキ=	465.20✓	

\*\*\* ケツコウ トラハース \*\*\*

チクメイ ... ミヤコタチク トチクカクセイリシキヨウ

NO.	NO.	ANGLE	*	AZIMUTH	LENGTH	DX	*	DY	*	X	Y	NO.
	112BL- 2 ✓									-131092.219	-69158.056	112BL- 2
112BL- 2	112BL-21 ✓			93 3 5 ✓	19.974 ✓	-1.063	0	19.946	0	-131093.282	-69138.110	112BL-21
112BL-21	112BL-22 ✓	180 0 0		93 3 5 ✓	54.627 ✓	-2.908	0	54.550	0	-131096.190	-69083.560	112BL- 22
112BL-22	112BL-23 ✓	180 0 0		93 3 5 ✓	14.833 ✓	-0.790	0	14.812	-1	-131096.980	-69068.749	112BL-23
112BL-23	112BL- 3 ✓	180 0 0		93 3 5 ✓	37.896 ✓	-2.017	0	37.842	0	-131098.997	-69030.907	112BL- 3
	TOTAL..	540 0 0			127.330 ✓	-6.778	0 ✓	127.150	-1 ✓			
	112BL- 3 ✓									-131098.997	-69030.907	112BL- 3
112BL- 3	112BL-33 ✓			1 18 9 ✓	20.015 ✓	20.010	0	0.455	0	-131078.987	-69030.452	112BL-33
112BL-33	112BL- 4 ✓	180 0 0		1 18 9 ✓	20.016 ✓	20.011	0	0.455	0	-131058.976	-69029.997	112BL- 4
	TOTAL..	180 0 0			40.031 ✓	40.021	0 ✓	0.910	0 ✓			
	112BL- 4 ✓									-131058.976	-69029.997	112BL- 4
112BL- 4	112BL-24 ✓			273 3 9 ✓	10.761 ✓	0.573	0	-10.746	1	-131058.403	-69040.742	112BL-24
112BL-24	112BL-25 ✓	180 0 0		273 3 9 ✓	40.745 ✓	2.170	0	-40.687	0	-131056.233	-69081.429	112BL-25
112BL-25	112BL-26 ✓	180 0 0		273 3 9 ✓	57.369 ✓	3.055	0	-57.288	0	-131053.178	-69138.717	112BL-26
112BL-26	112BL- 5 ✓	180 0 0		273 3 9 ✓	17.229 ✓	0.917	0	-17.205	0	-131052.261	-69155.922	112BL- 5
	TOTAL..	540 0 0			126.104 ✓	6.715	0 ✓	-125.926	1 ✓			
	112BL- 6 ✓									-131055.604	-69159.701	112BL- 6
112BL- 6	112BL-27 ✓			183 3 11 ✓	16.469 ✓	-16.446	1	-0.877	0	-131072.049	-69160.578	112BL-27
112BL-27	112BL- 1 ✓	180 0 0		183 3 11 ✓	16.501 ✓	-16.478	0	-0.879	0	-131088.527	-69161.457	112BL- 1
	TOTAL..	180 0 0			32.970 ✓	-32.924	1 ✓	-1.756	0 ✓			



\*\*\* ケツコウ トラハース \*\*\*

チウメイ ... ミヤコタチク トチクカクセイリシキヨウ

NO.	NO.	ANGLE	*	AZIMUTH	LENGTH	DX	*	DY	*	X	Y	NO.
	112BL-27 ✓									-131072.049	-69160.578	112BL-27
112BL-27	112BL-28 ✓			93 3 9 ✓	20.826 ✓	-1.109	0	20.796	0	-131073.158	-69139.782	112BL-28
112BL-28	112BL-30 ✓	180 0 0		93 3 9 ✓	57.369 ✓	-3.055	1	57.288	-1	-131076.212	-69082.495	112BL-30
112BL-30	112BL-32 ✓	180 0 0		93 3 9 ✓	40.745 ✓	-2.170	0	40.687	0	-131078.382	-69041.808	112BL-32
112BL-32	112BL-33 ✓	180 0 0		93 3 9 ✓	11.372 ✓	-0.606	1	11.356	0	-131078.987	-69030.452	112BL-33
	TOTAL..	540 0 0			130.312 ✓	-6.940	2 ✓	130.127	-1 ✓			
	112BL-27 ✓									-131072.049	-69160.578	112BL-27
112BL-27	112BL-29 ✓			93 3 9 ✓	23.568 ✓	-1.255	0	23.535	-1	-131073.304	-69137.044	112BL-29
112BL-29	112BL-30 ✓	180 0 0		93 3 9 ✓	54.627 ✓	-2.909	1	54.549	0	-131076.212	-69082.495	112BL-30
112BL-30	112BL-31 ✓	180 0 0		93 3 9 ✓	14.833 ✓	-0.790	0	14.812	0	-131077.002	-69067.683	112BL-31
112BL-31	112BL-33 ✓	180 0 0		93 3 9 ✓	37.284 ✓	-1.985	0	37.231	0	-131078.987	-69030.452	112BL-33
	TOTAL..	540 0 0			130.312 ✓	-6.939	1 ✓	130.127	-1 ✓			
	112BL-27 ✓									-131072.049	-69160.578	112BL-27
112BL-27	112BL-28 ✓			93 3 9 ✓	20.826 ✓	-1.109	0	20.796	0	-131073.158	-69139.782	112BL-28
112BL-28	112BL-29 ✓	180 0 0		93 3 9 ✓	2.742 ✓	-0.146	0	2.738	0	-131073.304	-69137.044	112BL-29
112BL-29	112BL-30 ✓	180 0 0		93 3 9 ✓	54.627 ✓	-2.909	1	54.549	0	-131076.212	-69082.495	112BL-30
112BL-30	112BL-31 ✓	180 0 0		93 3 9 ✓	14.833 ✓	-0.790	0	14.812	0	-131077.002	-69067.683	112BL-31
112BL-31	112BL-32 ✓	180 0 0		93 3 9 ✓	25.912 ✓	-1.380	0	25.875	0	-131078.382	-69041.808	112BL-32
112BL-32	112BL-33 ✓	180 0 0		93 3 9 ✓	11.372 ✓	-0.606	1	11.356	0	-131078.987	-69030.452	112BL-33
	TOTAL..	900 0 0			130.312 ✓	-6.940	2 ✓	130.126	0 ✓			
	112BL-25 ✓									-131056.233	-69081.429	112BL-25

\*\*\* ケツコウ トラハース \*\*\*

チクメイ ... ミヤコタチク トチクカクセイリシキヨウ

NO.	NO.	ANGLE	*	AZIMUTH	LENGTH	DX	*	DY	*	X	Y	NO.
112BL-25	112BL-30			183 3 9	20.007	-19.979	0	-1.065	-1	-131076.212	-69082.495	112BL-30
112BL-30	112BL-22	180 0 0		183 3 9	20.006	-19.978	0	-1.065	0	-131096.190	-69083.560	112BL-22
	TOTAL...	180 0 0			40.013	-39.957	0	-2.130	-1			