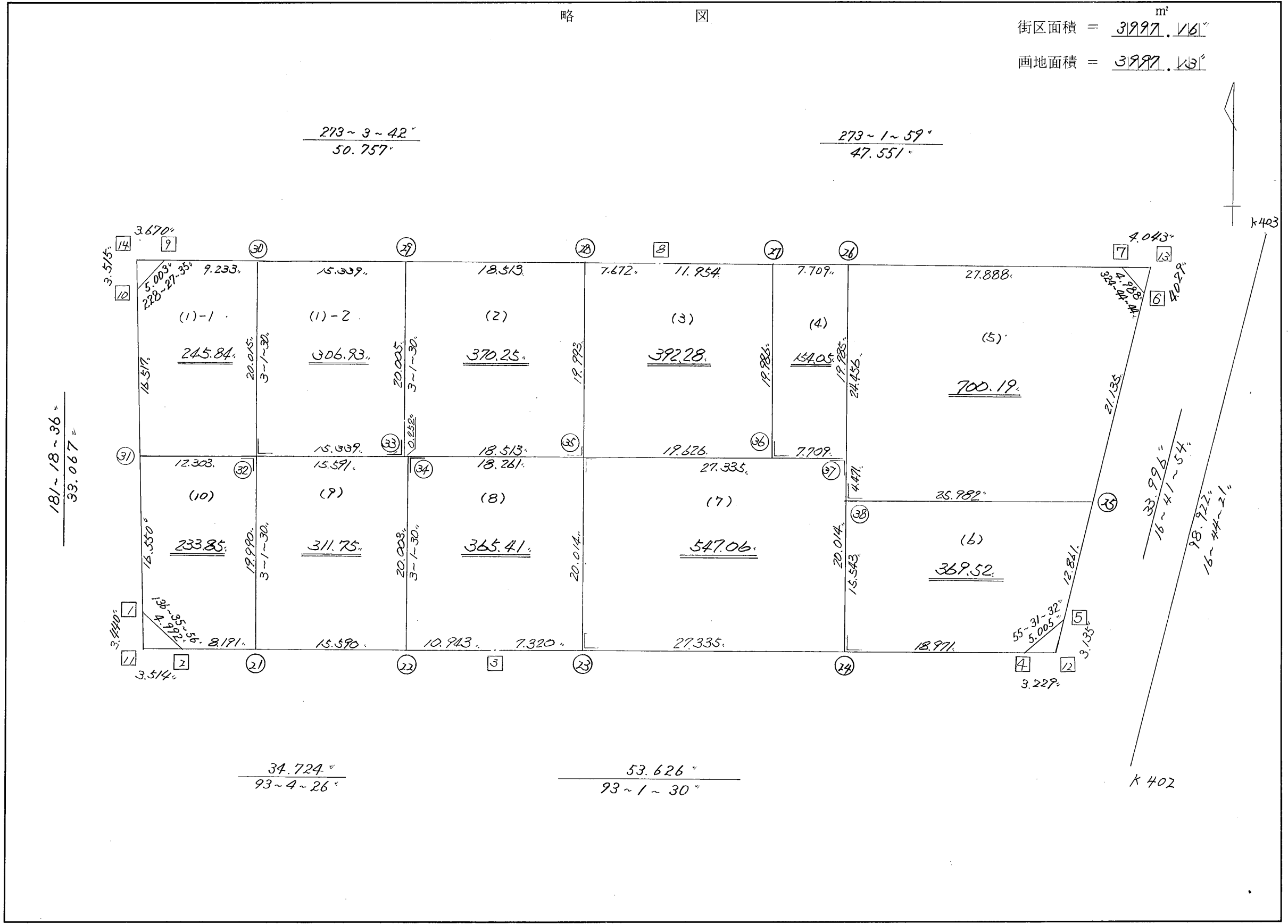


街廓原子一覽表用紙

(113 "BL) 111

略 図

街区面積 = $\frac{3997.16}{m^2}$
 画地面積 = $\frac{3997.13}{m^2}$



街区点番号 1 ~ 14 筆界点番号 21 ~ 38 画地番号 (1) ~ (10)

*** メンベキ ケイサン (ハイオウキヨボウ) ***

チクメイ ... ミヤコタチク トチクカクセイリシキヨウ

セイリ NO... 113BL

NO.	NO.	ANGLE	AZIMUTH	LENGTH	DX	*	DY	*	X	Y	DMD	2A	カーブメンベキ
113BL-10	113BL- 1		181 18 36						-131096.255	-69017.835			
113BL- 1	113BL- 2	135 17 20	136 35 56	4.992	-3.627	0	3.430	0	-131099.882	-69014.405	2.674	-9.698598	
113BL- 2	113BL- 3	136 28 30	93 4 26	34.724	-1.862	0	34.674	0	-131101.744	-68979.731	40.778	-75.928636	
113BL- 3	113BL- 4	179 57 4	93 1 30	53.626	-2.830	0	53.551	0	-131104.574	-68926.180	129.003	-365.078490	
113BL- 4	113BL- 5	142 30 2	55 31 32	5.005	2.833	0	4.126	0	-131101.741	-68922.054	186.680	528.864440	
113BL- 5	113BL- 6	141 10 22	16 41 54	33.996	32.562	0	9.768	0	-131069.179	-68912.286	200.574	6531.090588	
113BL- 6	113BL- 7	128 2 50	324 44 44	4.988	4.073	0	-2.879	0	-131065.106	-68915.165	207.463	844.996799	
113BL- 7	113BL- 8	128 17 15	273 1 59	47.551	2.516	0	-47.484	0	-131062.590	-68962.649	157.100	395.263600	
113BL- 8	113BL- 9	180 1 43	273 3 42	50.757	2.711	0	-50.685	0	-131059.879	-69013.334	58.931	159.761941	
113BL- 9	113BL-10	135 23 53	228 27 35	5.003	-3.318	0	-3.745	0	-131063.197	-69017.079	4.501	-14.934318	
113BL-10	113BL- 1	132 51 1	181 18 36	33.067	-33.058	0	-0.756	0	-131096.255	-69017.835	0.000	0.000000	
TOTAL..	ソツカクスウ= 10	1440	0 0	273.709	0.000	0	0.000	0			ハイメンベキ=	7994.337326	
											1/2=	3997.16	+0.00
											メンベキ=	3997.16	

*** メンセキ ケイサン (ハイオウキヨホウ) ***

チクメイ ... ミヤコタチク トチクカクセイリシキヨウ

NO.	NO.	ANGLE	AZIMUTH	LENGTH	DX	*	DY	*	X	Y	DMD	2A	カ-フメンセキ
113BL-10	113BL-31✓		181 18 36						-131079.710	-69017.457			
113BL-31	113BL-32✓	91 42 54	93 1 30✓	12.303✓	-0.649	0	12.286	0	-131080.359	-69005.171	11.908	-7.728292	
113BL-32	113BL-30✓	90 0 0	3 1 30✓	20.015✓	19.987	0	1.056	0	-131060.372	-69004.115	25.250	504.671750	
113BL-30	113BL-9✓	90 2 12 273	3 42✓	9.233✓	0.493	0	-9.220	1	-131059.879	-69013.334	17.087	8.423891	
113BL-9	113BL-10✓	135 23 53 228	27 35✓	5.003✓	-3.318	0	-3.745	0	-131063.197	-69017.079	4.123	-13.680114	
113BL-10	113BL-31✓	132 51 1 181	18 36✓	16.517✓	-16.513	0	-0.378	0	-131079.710	-69017.457	0.000	0.000000	
TOTAL...	ソツカクスク= 5	540 0 0		63.071	0.000	0✓	-0.001	1✓			ハイメンセキ=	491.687235	
											1/2=	245.84	+0.00
											メンセキ=	245.84✓	

セリ NO... 113BL(1)-/ ✓

113BL-30	113BL-32✓		183 1 30						-131080.359	-69005.171			
113BL-32	113BL-33✓	90 0 0	93 1 30✓	15.339✓	-0.809	0	15.318	0	-131081.168	-68989.853	14.262	-11.537958	
113BL-33	113BL-29✓	90 0 0	3 1 30✓	20.005✓	19.977	0	1.056	-1	-131061.191	-68988.798	30.635	611.995395	
113BL-29	113BL-30✓	90 2 12 273	3 42✓	15.339✓	0.819	0	-15.317	0	-131060.372	-69004.115	16.373	13.409487	
113BL-30	113BL-32✓	89 57 48 183	1 30✓	20.015✓	-19.987	0	-1.056	0	-131080.359	-69005.171	0.000	0.000000	
TOTAL...	ソツカクスク= 4	360 0 0		70.698	0.000	0✓	0.001	-1✓			ハイメンセキ=	613.866924	
											1/2=	306.93	+0.00
											メンセキ=	306.93✓	

セリ NO... 113BL(2)-/ ✓

*** メンセキ ケイサン (ハイオウキヨホウ) ***

チクメイ ... ミヤコタチク トチクカクセイリシキヨウ

セリ NO... 113BL~~(3)~~ (2) ✓

NO.	NO.	ANGLE	AZIMUTH		LENGTH	DX	*	DY	*	X	Y	DMD	2A	カーブメンセキ
113BL-29	113BL-33 ✓		183	1 30						-131081.168	-68989.853			
113BL-33	113BL-35 ✓	90 0 0	93	1 30 ✓	18.513 ✓	-0.977	0	18.487	0	-131082.145	-68971.366	17.432	-17.031064	
113BL-35	113BL-28 ✓	90 0 0	3	1 30 ✓	19.993 ✓	19.965	0	1.055	1	-131062.180	-68970.310	36.975	738.205875	
113BL-28	113BL-29 ✓	90 2 12	273	3 42 ✓	18.513 ✓	0.989	0	-18.487	-1	-131061.191	-68988.798	19.543	19.328027	
113BL-29	113BL-33 ✓	89 57 48	183	1 30 ✓	20.005 ✓	-19.977	0	-1.056	1	-131081.168	-68989.853	0.000	0.000000	
TOTAL..	ソツカクスウ= 4	360 0 0			77.024	0.000	0 ✓	-0.001	1 ✓			ハイメンセキ=	740.502838	
												1/2=	370.25	+0.00
												メンセキ=	370.25 ✓	

セリ NO... 113BL~~(4)~~ (3) ✓

113BL-28	113BL-35 ✓		183	1 30						-131082.145	-68971.366			
113BL-35	113BL-36 ✓	90 0 0	93	1 30 ✓	19.626 ✓	-1.036	1	19.599	0	-131083.180	-68951.767	18.543	-19.192005	
113BL-36	113BL-27 ✓	90 0 0	3	1 30 ✓	19.986 ✓	19.958	0	1.055	0	-131063.222	-68950.712	39.197	782.293726	
113BL-27	113BL- 8 ✓	90 0 29	273	1 59 ✓	11.954 ✓	0.633	-1	-11.937	0	-131062.590	-68962.649	28.315	17.895080	
113BL- 8	113BL-28 ✓	180 1 43	273	3 42 ✓	7.672 ✓	0.410	0	-7.661	0	-131062.180	-68970.310	8.717	3.573970	
113BL-28	113BL-35 ✓	89 57 48	183	1 30 ✓	19.993 ✓	-19.965	0	-1.055	-1	-131082.145	-68971.366	0.000	0.000000	
TOTAL..	ソツカクスウ= 5	540 0 0			79.231	0.000	0 ✓	0.001	-1 ✓			ハイメンセキ=	784.570771	
												1/2=	392.28	+0.00
												メンセキ=	392.28 ✓	

*** メンセキ ケイサン (ハイオウキヨホウ) ***

チクメイ ... ミヤコタチク トチクカクセイリシキヨウ

レイ NO... 113BL~~(5)~~ (4)✓

NO.	NO.	ANGLE	AZIMUTH	LENGTH	DX	*	DY	*	X	Y	DMD	2A	カ-フメンセキ
113BL-27	113BL-36✓		183 1 30						-131083.180	-68951.767			
113BL-36	113BL-37✓	90 0 0	93 1 30✓	7.709✓	-0.407	0	7.698	0	-131083.587	-68944.069	6.643	-2.703701	
113BL-37	113BL-26✓	90 0 0	3 1 30✓	19.985✓	19.957	0	1.055	-1	-131063.630	-68943.015	15.395	307.238015	
113BL-26	113BL-27✓	90 0 29	273 1 59✓	7.709✓	0.408	0	-7.698	1	-131063.222	-68950.712	8.752	3.570816	
113BL-27	113BL-36✓	89 59 31	183 1 30✓	19.986✓	-19.958	0	-1.055	0	-131083.180	-68951.767	0.000	0.000000	
TOTAL..	ソツカクスク= 4	360 0 0		55.389	0.000	0 ✓	0.000	0 ✓			ハイメンセキ=	308.105130	
											1/2=	154.05	+0.00
											メンセキ=	154.05✓	

レイ NO... 113BL~~(6)~~ (5)✓

113BL-26	113BL-38✓		183 1 30						-131088.052	-68944.305			
113BL-38	113BL-25✓	90 0 0	93 1 30✓	25.982✓	-1.371	0	25.946	0	-131089.423	-68918.359	24.656	-33.803376	
113BL-25	113BL- 6✓	103 40 24	16 41 54✓	21.135✓	20.244	0	6.073	0	-131069.179	-68912.286	56.675	1147.328700	
113BL- 6	113BL- 7✓	128 2 50	324 44 44✓	4.988✓	4.073	0	-2.879	0	-131065.106	-68915.165	59.869	243.846437	
113BL- 7	113BL-26✓	128 17 15	273 1 59✓	27.888✓	1.476	0	-27.849	-1	-131063.630	-68943.015	29.140	43.010640	
113BL-26	113BL-38✓	89 59 31	183 1 30✓	24.456✓	-24.422	0	-1.291	1	-131088.052	-68944.305	0.000	0.000000	
TOTAL..	ソツカクスク= 5	540 0 0		104.449	0.000	0 ✓	0.000	0 ✓			ハイメンセキ=	1400.382401	
											1/2=	700.19	+0.00
											メンセキ=	700.19✓	

*** メンセキ かいさん (ハイオウキヨホウ) ***

チクメイ... ミヤコタチク トチクカクセイリシキヨウ

NO.	NO.	ANGLE	AZIMUTH	LENGTH	DX	*	DY	*	X	Y	DMD	2A	カ-クメンセキ
113BL-38	113BL-24✓		183 1 30						-131103.573	-68945.125			
113BL-24	113BL-4✓	90 0 0	93 1 30✓	18.971✓	-1.001	0	18.945	0	-131104.574	-68926.180	18.125	-18.143125	
113BL-4	113BL-5✓	142 30 2	55 31 32✓	5.005✓	2.833	0	4.126	0	-131101.741	-68922.054	41.196	116.708268	
113BL-5	113BL-25✓	141 10 22	16 41 54✓	12.861✓	12.319	-1	3.695	0	-131089.423	-68918.359	49.017	603.791406	
113BL-25	113BL-38✓	76 19 36	273 1 30✓	25.982✓	1.371	0	-25.946	0	-131088.052	-68944.305	26.766	36.696186	
113BL-38	113BL-24✓	90 0 0	183 1 30✓	15.543✓	-15.521	0	-0.820	0	-131103.573	-68945.125	0.000	0.000000	
TOTAL..	ソツカクスク= 5	540 0 0		78.362	0.001	-1✓	0.000	0✓			ハイメンセキ=	739.052735	
											1/2=	369.52	+0.00
											メンセキ=	369.52✓	

セリ NO... 113BL~~(7)~~ (6)✓

113BL-35	113BL-23✓		183 1 30						-131102.130	-68972.422			
113BL-23	113BL-24✓	90 0 0	93 1 30✓	27.335✓	-1.443	0	27.297	0	-131103.573	-68945.125	26.241	-37.865763	
113BL-24	113BL-37✓	90 0 0	3 1 30✓	20.014✓	19.986	0	1.056	0	-131083.587	-68944.069	54.594	1091.115684	
113BL-37	113BL-35✓	90 0 0	273 1 30✓	27.335✓	1.443	-1	-27.297	0	-131082.145	-68971.366	28.353	40.885026	
113BL-35	113BL-23✓	90 0 0	183 1 30✓	20.014✓	-19.986	1	-1.056	0	-131102.130	-68972.422	0.000	0.000000	
TOTAL..	ソツカクスク= 4	360 0 0		94.698	0.000	0✓	0.000	0✓			ハイメンセキ=	1094.134947	
											1/2=	547.06	+0.00
											メンセキ=	547.06✓	

セリ NO... 113BL~~(8)~~ (7)✓

*** メンセキ ケイサン (ハイオウキヨホウ) ***

チクメイ ... ミヤコタマチク トチクカクセイリヨキヨウ

NO.	NO.	ANGLE	AZIMUTH	LENGTH	DX	*	DY	*	X	Y	DMD	2A	カ-フメンセキ
113BL-34	113BL-22✓		183 1 30						-131101.157	-68990.658			
113BL-22	113BL-3✓	90 2 56	93 4 26✓	10.943✓	-0.587	0	10.927	0	-131101.744	-68979.731	9.871	-5.794277	
113BL-3	113BL-23✓	179 57 4	93 1 30✓	7.320✓	-0.386	0	7.310	-1	-131102.130	-68972.422	28.107	-10.849302	
113BL-23	113BL-35✓	90 0 0	3 1 30✓	20.014✓	19.986	-1	1.056	0	-131082.145	-68971.366	36.472	728.892920	
113BL-35	113BL-34✓	90 0 0	273 1 30✓	18.261✓	0.964	-1	-18.236	0	-131081.182	-68989.602	19.292	18.578196	
113BL-34	113BL-22✓	90 0 0	183 1 30✓	20.003✓	-19.975	0	-1.056	0	-131101.157	-68990.658	0.000	0.000000	
TOTAL..	ソツカクスウ= 5	540 0 0		76.541	0.002	-2✓	0.001	-1✓			ハイメンセキ=	730.827537	
											1/2=	365.41	+0.00
											メンセキ=	365.41✓	

レイリ NO... 113BL(8)✓

113BL-32	113BL-21✓		183 1 30						-131100.321	-69006.226			
113BL-21	113BL-22✓	90 2 56	93 4 26✓	15.590✓	-0.836	0	15.568	0	-131101.157	-68990.658	14.513	-12.132868	
113BL-22	113BL-34✓	89 57 4	3 1 30✓	20.003✓	19.975	0	1.056	0	-131081.182	-68989.602	31.137	621.961575	
113BL-34	113BL-32✓	90 0 0	273 1 30✓	15.591✓	0.823	0	-15.569	0	-131080.359	-69005.171	16.624	13.681552	
113BL-32	113BL-21✓	90 0 0	183 1 30✓	19.990✓	-19.962	0	-1.055	0	-131100.321	-69006.226	0.000	0.000000	
TOTAL..	ソツカクスウ= 4	360 0 0		71.174	0.000	0✓	0.000	0✓			ハイメンセキ=	623.510259	
											1/2=	311.75	+0.00
											メンセキ=	311.75✓	

レイリ NO... 113BL(9)✓

*** メンセキ カイサン (ハイオウキヨホウ) ***

チクメイ ... ミヤコタチク トチクカクセイリシキヨウ

セイリ NO... 113BL~~(11)~~ (10)✓

NO.	NO.	ANGLE	AZIMUTH	LENGTH	DX	*	DY	*	X	Y	DMD	2A	カ-フ"メンセキ
113BL-31	113BL- 1✓		181 18 36						-131096.255	-69017.835			
113BL- 1	113BL- 2✓	135 17 20	136 35 56✓	4.992✓	-3.627	0	3.430	0	-131099.882	-69014.405	3.052	-11.069604	
113BL- 2	113BL-21✓	136 28 30	93 4 26✓	8.191✓	-0.439	0	8.179	0	-131100.321	-69006.226	14.661	-6.436179	
113BL-21	113BL-32✓	89 57 4	3 1 30✓	19.990✓	19.962	0	1.055	0	-131080.359	-69005.171	23.895	476.991990	
113BL-32	113BL-31✓	90 0 0	273 1 30✓	12.303✓	0.649	0	-12.286	0	-131079.710	-69017.457	12.664	8.218936	
113BL-31	113BL- 1✓	88 17 6	181 18 36✓	16.550✓	-16.546	1	-0.378	0	-131096.255	-69017.835	0.000	0.000000	
TOTAL..	ソツカクスク= 5	540 0 0		62.026	-0.001	1	0.000	0✓			ハイメンセキ=	467.705143	
											1/2=	233.85	+0.00
											メンセキ=	233.85✓	

*** ケツコウ トラハース ***

チクメイ ... ミヤコタチク トチクカクセイリシキヨウ

NO.	NO.	ANGLE	*	AZIMUTH	LENGTH	DX	*	DY	*	X	Y	NO.
	113BL- 2 ✓									-131099.882	-69014.405	113BL- 2
113BL- 2	113BL-21 ✓		93	4 26 ✓	8.191 ✓	-0.439	0	8.179	0	-131100.321	-69006.226	113BL-21
113BL-21	113BL-22 ✓	180 0 0	93	4 26 ✓	15.590 ✓	-0.836	0	15.568	0	-131101.157	-68990.658	113BL-22
113BL-22	113BL- 3 ✓	180 0 0	93	4 26 ✓	10.943 ✓	-0.587	0	10.927	0	-131101.744	-68979.731	113BL- 3
	TOTAL..	360 0 0			34.724 ✓	-1.862	0 ✓	34.674	0 ✓			
	113BL- 3 ✓									-131101.744	-68979.731	113BL- 3
113BL- 3	113BL-23 ✓		93	1 30 ✓	7.320 ✓	-0.386	0	7.310	-1	-131102.130	-68972.422	113BL-23
113BL-23	113BL-24 ✓	180 0 0	93	1 30 ✓	27.335 ✓	-1.443	0	27.297	0	-131103.573	-68945.125	113BL-24
113BL-24	113BL- 4 ✓	180 0 0	93	1 30 ✓	18.971 ✓	-1.001	0	18.945	0	-131104.574	-68926.180	113BL- 4
	TOTAL..	360 0 0			53.626 ✓	-2.830	0 ✓	53.552	-1 ✓			
	113BL- 5 ✓									-131101.741	-68922.054	113BL- 5
113BL- 5	113BL-25 ✓		16	41 54 ✓	12.861 ✓	12.319	-1	3.695	0	-131089.423	-68918.359	113BL-25
113BL-25	113BL- 6 ✓	180 0 0	16	41 54 ✓	21.135 ✓	20.244	0	6.073	0	-131069.179	-68912.286	113BL- 6
	TOTAL..	180 0 0			33.996 ✓	32.563	-1 ✓	9.768	0 ✓			
	113BL- 7 ✓									-131065.106	-68915.165	113BL- 7
113BL- 7	113BL-26 ✓		273	1 59 ✓	27.888 ✓	1.476	0	-27.849	-1	-131063.630	-68943.015	113BL-26
113BL-26	113BL-27 ✓	180 0 0	273	1 59 ✓	7.709 ✓	0.408	0	-7.698	1	-131063.222	-68950.712	113BL-27
113BL-27	113BL- 8 ✓	180 0 0	273	1 59 ✓	11.954 ✓	0.633	-1	-11.937	0	-131062.590	-68962.649	113BL- 8
	TOTAL..	360 0 0			47.551 ✓	2.517	-1 ✓	-47.484	0 ✓			
	113BL- 8 ✓									-131062.590	-68962.649	113BL- 8

*** ケツコウ トラハ入 ***

チクメイ ... ミヤコタチク トチクカクセイリシキヨウ

NO.	NO.	ANGLE	*	AZIMUTH	LENGTH	DX	*	DY	*	X	Y	NO.
113BL- 8	113BL-28✓			273 3 42✓	7.672✓	0.410	0	-7.661	0	-131062.180	-68970.310	113BL-28
113BL-28	113BL-29✓	180 0 0		273 3 42✓	18.513✓	0.989	0	-18.487	-1	-131061.191	-68988.798	113BL-29
113BL-29	113BL-30✓	180 0 0		273 3 42✓	15.339✓	0.819	0	-15.317	0	-131060.372	-69004.115	113BL-30
113BL-30	113BL- 9✓	180 0 0		273 3 42✓	9.233✓	0.493	0	-9.220	1	-131059.879	-69013.334	113BL- 9
	TOTAL..	540 0 0			50.757✓	2.711	0	-50.685	0			
	113BL-10✓									-131063.197	-69017.079	113BL-10
113BL-10	113BL-31✓			181 18 36✓	16.517✓	-16.513	0	-0.378	0	-131079.710	-69017.457	113BL-31
113BL-31	113BL- 1✓	180 0 0		181 18 36✓	16.550✓	-16.546	1	-0.378	0	-131096.255	-69017.835	113BL- 1
	TOTAL..	180 0 0			33.067✓	-33.059	1	-0.756	0			
	113BL-31✓									-131079.710	-69017.457	113BL-31
113BL-31	113BL-32✓			93 1 30✓	12.303✓	-0.649	0	12.286	0	-131080.359	-69005.171	113BL-32
113BL-32	113BL-33✓	180 0 0		93 1 30✓	15.339✓	-0.809	0	15.318	0	-131081.168	-68989.853	113BL-33
113BL-33	113BL-35✓	180 0 0		93 1 30✓	18.513✓	-0.977	0	18.487	0	-131082.145	-68971.366	113BL-35
113BL-35	113BL-36✓	180 0 0		93 1 30✓	19.626✓	-1.036	1	19.599	0	-131083.180	-68951.767	113BL-36
113BL-36	113BL-37✓	180 0 0		93 1 30✓	7.709✓	-0.407	0	7.698	0	-131083.587	-68944.069	113BL-37
	TOTAL..	720 0 0			73.490✓	-3.878	1	73.388	0			
	113BL-31✓									-131079.710	-69017.457	113BL-31
113BL-31	113BL-32✓			93 1 30✓	12.303✓	-0.649	0	12.286	0	-131080.359	-69005.171	113BL-32
113BL-32	113BL-34✓	180 0 0		93 1 30✓	15.591✓	-0.823	0	15.569	0	-131081.182	-68989.602	113BL-34
113BL-34	113BL-35✓	180 0 0		93 1 30✓	18.261✓	-0.964	1	18.236	0	-131082.145	-68971.366	113BL-35
113BL-35	113BL-37✓	180 0 0		93 1 30✓	27.335✓	-1.443	1	27.297	0	-131083.587	-68944.069	113BL-37

*** ケツコウ トラハス ***

チクメイ ... ミヤコタチク トチクカクセイリヨキヨウ

NO.	NO.	ANGLE	*	AZIMUTH	LENGTH	DX	*	DY	*	X	Y	NO.
	TOTAL..	540 0 0			73.490	-3.879	2	73.388	0			
	113BL-31									-131079.710	-69017.457	113BL-31
113BL-31	113BL-32		93	1 30	12.303	-0.649	0	12.286	0	-131080.359	-69005.171	113BL-32
113BL-32	113BL-33	180 0 0	93	1 30	15.339	-0.809	0	15.318	0	-131081.168	-68989.853	113BL-33
113BL-33	113BL-34	180 0 0	93	1 30	0.252	-0.013	-1	0.252	-1	-131081.182	-68989.602	113BL-34
113BL-34	113BL-35	180 0 0	93	1 30	18.261	-0.964	1	18.236	0	-131082.145	-68971.366	113BL-35
113BL-35	113BL-36	180 0 0	93	1 30	19.626	-1.036	1	19.599	0	-131083.180	-68951.767	113BL-36
113BL-36	113BL-37	180 0 0	93	1 30	7.709	-0.407	0	7.698	0	-131083.587	-68944.069	113BL-37
	TOTAL..	900 0 0			73.490	-3.878	1	73.389	-1			
	113BL-30									-131060.372	-69004.115	113BL-30
113BL-30	113BL-32		183	1 30	20.015	-19.987	0	-1.056	0	-131080.359	-69005.171	113BL-32
113BL-32	113BL-21	180 0 0	183	1 30	19.990	-19.962	0	-1.055	0	-131100.321	-69006.226	113BL-21
	TOTAL..	180 0 0			40.005	-39.949	0	-2.111	0			
	113BL-28									-131062.180	-68970.310	113BL-28
113BL-28	113BL-35		183	1 30	19.993	-19.965	0	-1.055	-1	-131082.145	-68971.366	113BL-35
113BL-35	113BL-23	180 0 0	183	1 30	20.014	-19.986	1	-1.056	0	-131102.130	-68972.422	113BL-23
	TOTAL..	180 0 0			40.007	-39.951	1	-2.111	-1			
	113BL-26									-131063.630	-68943.015	113BL-26
113BL-26	113BL-37		183	1 30	19.985	-19.957	0	-1.055	1	-131083.587	-68944.069	113BL-37
113BL-37	113BL-38	180 0 0	183	1 30	4.471	-4.465	0	-0.236	0	-131088.052	-68944.305	113BL-38

*** ケツコウ トラハ-ス ***

チクメイ ... ミヤコタチク トチクカクセイリシキヨウ

NO.	NO..	ANGLE	*	AZIMUTH	LENGTH	DX	*	DY	*	X	Y	NO.
113BL-38	113BL-24 ✓	180 0 0		183 1 30 ✓	15.543 ✓	-15.521	0	-0.820	0	-131103.573	-68945.125	113BL-24
	TOTAL...	360 0 0			39.999 ✓	-39.943	0 ✓	-2.111	1 ✓			