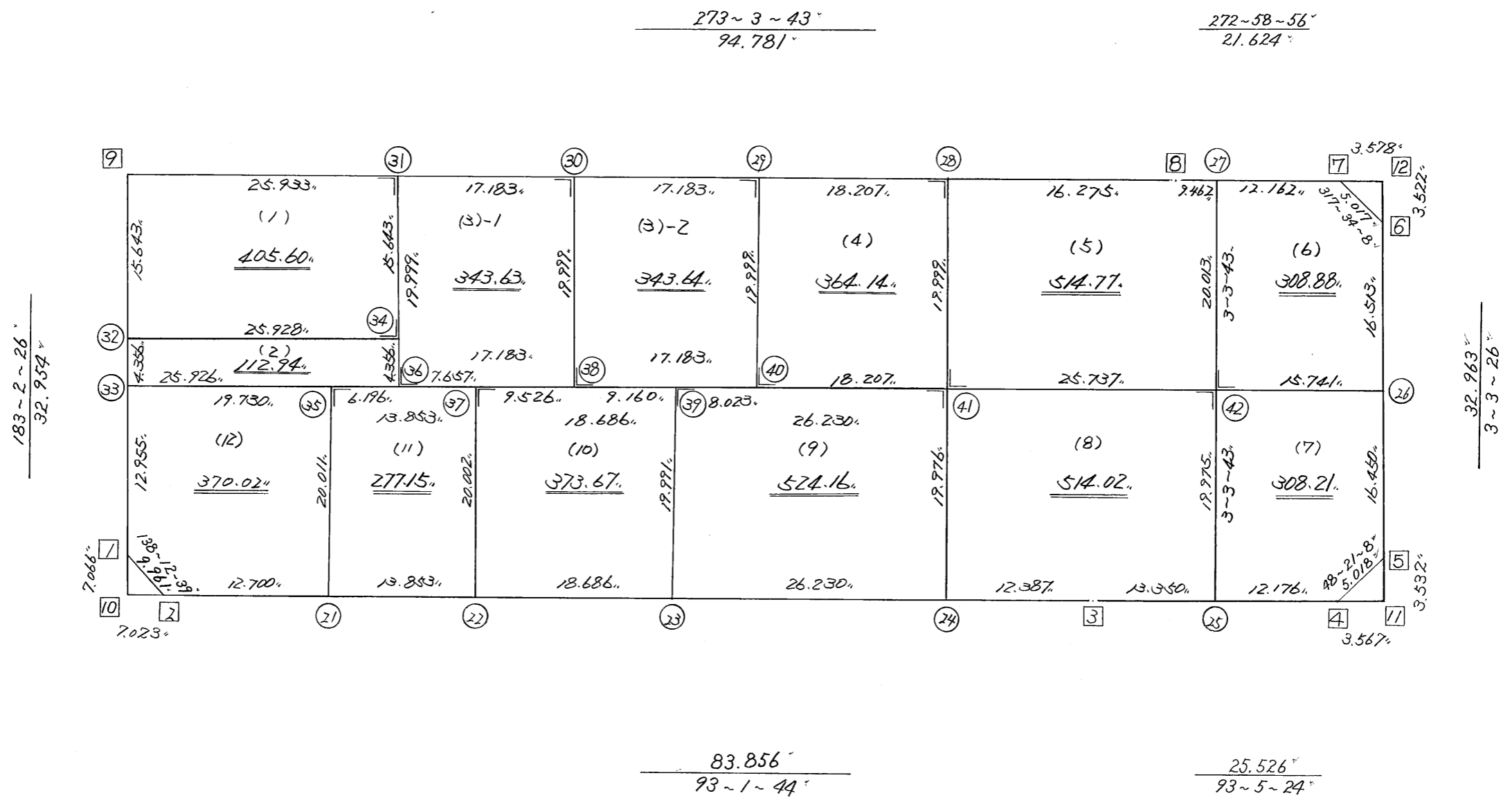


略 図

街区面積 = 4760.85<sup>m</sup>

画地面積 = 4760.83



街区点番号 1 ~ 12 筆界点番号 (21) ~ (42) 画地番号 (1) ~ (12)

\*\*\* メンセキ ケイサン (ハ"イウキヨホウ) \*\*\*

チクメイ ... ミヤコタ"チク トチクカクセイリシ"キ"ヨウ

セイリ NO... 116BL

NO.	NO.	ANGLE	AZIMUTH	LENGTH	DX	*	DY	*	X	Y	DMD	2A	カ-フ"メ"セキ
116BL- 9	116BL- 1		183 2 26						-131128.480	-69209.636			
116BL- 1	116BL- 2	135 10 13	138 12 39	9.961	-7.427	0	6.638	0	-131135.907	-69202.998	4.890	-36.318030	
116BL- 2	116BL- 3	134 49 5	93 1 44	83.856	-4.431	0	83.739	0	-131140.338	-69119.259	95.267	-422.128077	
116BL- 3	116BL- 4	180 3 40	93 5 24	25.526	-1.376	0	25.489	0	-131141.714	-69093.770	204.495	-281.385120	
116BL- 4	116BL- 5	135 15 44	48 21 8	5.018	3.335	0	3.750	0	-131138.379	-69090.020	233.734	779.502890	
116BL- 5	116BL- 6	134 42 18	3 3 26	32.963	32.916	0	1.758	0	-131105.463	-69088.262	239.242	7874.889672	
116BL- 6	116BL- 7	134 30 42	317 34 8	5.017	3.703	0	-3.385	0	-131101.760	-69091.647	237.615	879.888345	
116BL- 7	116BL- 8	135 24 48	272 58 56	21.624	1.125	0	-21.595	0	-131100.635	-69113.242	212.635	239.214375	
116BL- 8	116BL- 9	180 4 47	273 3 43	94.781	5.063	0	-94.646	0	-131095.572	-69207.888	96.394	488.042822	
116BL- 9	116BL- 1	89 58 43	183 2 26	32.954	-32.908	0	-1.748	0	-131128.480	-69209.636	0.000	0.000000	
TOTAL..	ソツカクウ= 9	1260 0 0		311.700	0.000	0	0.000	0			ハ"イ"メ"セキ=	9521.706877	
											1/2=	4760.85	+0.00
											メ"セ"キ=	4760.85	

\*\*\* ムンセキ ケイサン (ハ"イオウキヨホウ) \*\*\*

チクメイ ... ミヤコタ"チク トチクカクセイリシ"キ"ヨウ

											セイリ NO... 116BL(1)✓						
NO.	NO.	ANGLE			AZIMUTH			LENGTH	DX	*	DY	*	X	Y	DMD	2A	カ-フ"ムンセキ
116BL- 9	116BL-32✓				183	2	26						-131111.192	-69208.718			
116BL-32	116BL-34✓	90	1	17	93	3	43✓	25.928✓	-1.385	0	25.891	0	-131112.577	-69182.827	25.061	-34.709485	
116BL-34	116BL-31✓	90	0	0	3	3	43✓	15.643✓	15.621	-1	0.836	-1	-131096.957	-69181.992	51.787	808.912940	
116BL-31	116BL- 9✓	90	0	0	273	3	43✓	25.933✓	1.385	0	-25.896	0	-131095.572	-69207.888	26.726	37.015510	
116BL- 9	116BL-32✓	89	58	43	183	2	26✓	15.643✓	-15.621	1	-0.830	0	-131111.192	-69208.718	0.000	0.000000	
TOTAL..	ソツカクスウ= 4	360	0	0				83.147	0.000	0%	0.001	-1%			ハ"イムンセキ=	811.218965	
															1/2=	405.60	+0.00
															ムンセキ=	405.60✓	

											セイリ NO... 116BL(2)✓						
116BL-32	116BL-33✓				183	2	26						-131115.542	-69208.949			
116BL-33	116BL-36✓	90	1	17	93	3	43✓	25.926✓	-1.385	0	25.889	0	-131116.927	-69183.060	25.658	-35.536330	
116BL-36	116BL-34✓	90	0	0	3	3	43✓	4.356✓	4.350	0	0.233	0	-131112.577	-69182.827	51.780	225.243000	
116BL-34	116BL-32✓	90	0	0	273	3	43✓	25.928✓	1.385	0	-25.891	0	-131111.192	-69208.718	26.122	36.178970	
116BL-32	116BL-33✓	89	58	43	183	2	26✓	4.356✓	-4.350	0	-0.231	0	-131115.542	-69208.949	0.000	0.000000	
TOTAL..	ソツカクスウ= 4	360	0	0				60.566	0.000	0%	0.000	0%			ハ"イムンセキ=	225.885640	
															1/2=	112.94	+0.00
															ムンセキ=	112.94✓	

\*\*\* メンセキ ケイサン (ハイオウキヨホウ) \*\*\*

チクメイ ... ミヤコタチク トチクカクセイリシキヨウ

セリ NO... 116BL<sup>(3-1)✓</sup>  
~~(3)~~

NO.	NO.	ANGLE	AZIMUTH	LENGTH	DX	*	DY	*	X	Y	DMD	2A	カ-フメンセキ
116BL-31	116BL-36✓		183 3 43						-131116.927	-69183.060			
116BL-36	116BL-38✓	90 0 0	93 3 43✓	17.183✓	-0.918	0	17.158	0	-131117.845	-69165.902	16.090	-14.770620	
116BL-38	116BL-30✓	90 0 0	3 3 43✓	19.999✓	19.970	0	1.068	1	-131097.875	-69164.833	34.317	685.310490	
116BL-30	116BL-31✓	90 0 0	273 3 43✓	17.183✓	0.918	0	-17.158	-1	-131096.957	-69181.992	18.227	16.732386	
116BL-31	116BL-36✓	90 0 0	183 3 43✓	19.999✓	-19.970	0	-1.068	0	-131116.927	-69183.060	0.000	0.000000	
TOTAL..	ソツカクスク= 4	360 0 0		74.364	0.000	0✓	0.000	0✓			ハイメンセキ=	687.272256	
											1/2=	343.63	+0.00
											メンセキ=	343.63✓	

セリ NO... 116BL<sup>(3-2)✓</sup>  
~~(4)~~

116BL-30	116BL-38✓		183 3 43						-131117.845	-69165.902			
116BL-38	116BL-40✓	90 0 0	93 3 43✓	17.183✓	-0.918	0	17.158	1	-131118.763	-69148.743	16.090	-14.770620	
116BL-40	116BL-29✓	90 0 0	3 3 43✓	19.999✓	19.970	1	1.068	0	-131098.792	-69147.675	34.317	685.344807	
116BL-29	116BL-30✓	90 0 0	273 3 43✓	17.183✓	0.918	-1	-17.158	0	-131097.875	-69164.833	18.227	16.714159	
116BL-30	116BL-38✓	90 0 0	183 3 43✓	19.999✓	-19.970	0	-1.068	-1	-131117.845	-69165.902	0.000	0.000000	
TOTAL..	ソツカクスク= 4	360 0 0		74.364	0.000	0✓	0.000	0✓			ハイメンセキ=	687.288346	
											1/2=	343.64	+0.00
											メンセキ=	343.64✓	

\*\*\* メンセキ ケイサン (ハイオウキヨホウ) \*\*\*

チクメイ ... ミヤコタチク トチクカクセイリシキヨウ

セリ NO... 116BL<sup>(4)</sup>~~(5)~~

NO.	NO.	ANGLE	AZIMUTH	LENGTH	DX	*	DY	*	X	Y	DMD	2A	カーブメンセキ
116BL-29	116BL-40✓		183 3 43						-131118.763	-69148.743			
116BL-40	116BL-41✓	90 0 0	93 3 43✓	18.207✓	-0.973	0	18.181	0	-131119.736	-69130.562	17.113	-16.650949	
116BL-41	116BL-28✓	90 0 0	3 3 43✓	19.999✓	19.970	1	1.068	1	-131099.765	-69129.493	36.363	726.205473	
116BL-28	116BL-29✓	90 0 0	273 3 43✓	18.207✓	0.973	0	-18.181	-1	-131098.792	-69147.675	19.250	18.730250	
116BL-29	116BL-40✓	90 0 0	183 3 43✓	19.999✓	-19.970	-1	-1.068	0	-131118.763	-69148.743	0.000	0.000000	
TOTAL...	ソツカクスウ= 4	360 0 0		76.412	0.000	0%	0.000	0%			ハイメンセキ=	728.284774	
											1/2=	364.14	+0.00
											メンセキ=	364.14✓	

セリ NO... 116BL<sup>(5)</sup>~~(6)~~

116BL-28	116BL-41✓		183 3 43						-131119.736	-69130.562			
116BL-41	116BL-42✓	90 0 0	93 3 43✓	25.737✓	-1.375	0	25.700	0	-131121.111	-69104.862	24.631	-33.867625	
116BL-42	116BL-27✓	90 0 0	3 3 43✓	20.013✓	19.984	0	1.069	0	-131101.127	-69103.793	51.400	1027.177600	
116BL-27	116BL- 8✓	89 55 13	272 58 56✓	9.462✓	0.492	0	-9.449	0	-131100.635	-69113.242	43.020	21.165840	
116BL- 8	116BL-28✓	180 4 47	273 3 43✓	16.275✓	0.869	1	-16.252	1	-131099.765	-69129.493	17.320	15.068400	
116BL-28	116BL-41✓	90 0 0	183 3 43✓	19.999✓	-19.970	-1	-1.068	-1	-131119.736	-69130.562	0.000	0.000000	
TOTAL...	ソツカクスウ= 5	540 0 0		91.486	0.000	0%	0.000	0%			ハイメンセキ=	1029.544215	
											1/2=	514.77	+0.00
											メンセキ=	514.77✓	

\*\*\* メンセキ ケイサン (ハイオウキヨホウ) \*\*\*

チクメイ ... ミヤコタチク トチクカクセイリシキヨウ

セリ NO... 116BL<sup>(6)</sup>~~(7)~~

NO.	NO.	ANGLE	AZIMUTH	LENGTH	DX	*	DY	*	X	Y	DMD	2A	カーブメンセキ
116BL-27	116BL-42✓		183 3 43						-131121.111	-69104.862			
116BL-42	116BL-26✓	90 0 0	93 3 43✓	15.741✓	-0.841	0	15.719	0	-131121.952	-69089.143	14.650	-12.320650	
116BL-26	116BL-6✓	89 59 43	3 3 26✓	16.513✓	16.489	0	0.881	0	-131105.463	-69088.262	31.250	515.281250	
116BL-6	116BL-7✓	134 30 42	317 34 8✓	5.017✓	3.703	0	-3.385	0	-131101.760	-69091.647	28.746	106.446438	
116BL-7	116BL-27✓	135 24 48	272 58 56✓	12.162✓	0.633	0	-12.146	0	-131101.127	-69103.793	13.215	8.365095	
116BL-27	116BL-42✓	90 4 47	183 3 43✓	20.013✓	-19.984	0	-1.069	0	-131121.111	-69104.862	0.000	0.000000	
TOTAL..	ソツカクスウ= 5	540 0 0		69.446	0.000	0	0.000	0			ハイメンセキ=	617.772133	
											1/2=	308.88	+0.00
											メンセキ=	308.88✓	

セリ NO... 116BL<sup>(7)</sup>~~(8)~~

116BL-42	116BL-25✓		183 3 43						-131141.058	-69105.928			
116BL-25	116BL-4✓	90 1 41	93 5 24✓	12.176✓	-0.656	0	12.158	0	-131141.714	-69093.770	11.092	-7.276352	
116BL-4	116BL-5✓	135 15 44	48 21 8✓	5.018✓	3.335	0	3.750	0	-131138.379	-69090.020	27.000	90.045000	
116BL-5	116BL-26✓	134 42 18	3 3 26✓	16.450✓	16.427	0	0.877	0	-131121.952	-69089.143	31.627	519.536729	
116BL-26	116BL-42✓	90 0 17	273 3 43✓	15.741✓	0.841	0	-15.719	0	-131121.111	-69104.862	16.785	14.116185	
116BL-42	116BL-25✓	90 0 0	183 3 43✓	19.975✓	-19.946	-1	-1.067	1	-131141.058	-69105.928	0.000	0.000000	
TOTAL..	ソツカクスウ= 5	540 0 0		69.360	0.001	-1	-0.001	1			ハイメンセキ=	616.421562	
											1/2=	308.21	+0.00
											メンセキ=	308.21✓	

\*\*\* メンセキ ケイサン (ハイイウキヨホウ) \*\*\*

チクメイ ... ミヤコタチク トチクカクセイリシキヨウ

レイ NO... 116BL<sup>(8)✓</sup>  
~~(9)~~

NO.	NO.	ANGLE	AZIMUTH	LENGTH	DX	*	DY	*	X	Y	DMD	2A	カ-フメンセキ
116BL-41	116BL-24✓		183 3 43						-131139.683	-69131.629			
116BL-24	116BL-3✓	89 58 1	93 1 44✓	12.387✓	-0.655	0	12.370	0	-131140.338	-69119.259	11.303	-7.403465	
116BL-3	116BL-25✓	180 3 40	93 5 24✓	13.350✓	-0.720	0	13.331	0	-131141.058	-69105.928	37.004	-26.642880	
116BL-25	116BL-42✓	89 58 19	3 3 43✓	19.975✓	19.946	1	1.067	-1	-131121.111	-69104.862	51.401	1025.295747	
116BL-42	116BL-41✓	90 0 0	273 3 43✓	25.737✓	1.375	0	-25.700	0	-131119.736	-69130.562	26.767	36.804625	
116BL-41	116BL-24✓	90 0 0	183 3 43✓	19.976✓	-19.947	0	-1.067	0	-131139.683	-69131.629	0.000	0.000000	
TOTAL..	ソツカクスク= 5	540 0 0		91.425	-0.001	1✓	0.001	-1✓			ハイイウキヨホウ=	1028.054027	
											1/2=	514.02	+0.00
											メンセキ=	514.02✓	

レイ NO... 116BL<sup>(9)✓</sup>  
~~(10)~~

116BL-39	116BL-23✓		183 3 43						-131138.297	-69157.822			
116BL-23	116BL-24✓	89 58 1	93 1 44✓	26.230✓	-1.386	0	26.193	0	-131139.683	-69131.629	25.126	-34.824636	
116BL-24	116BL-41✓	90 1 59	3 3 43✓	19.976✓	19.947	0	1.067	0	-131119.736	-69130.562	52.386	1044.943542	
116BL-41	116BL-39✓	90 0 0	273 3 43✓	26.230✓	1.401	1	-26.193	0	-131118.334	-69156.755	27.260	38.218520	
116BL-39	116BL-23✓	90 0 0	183 3 43✓	19.991✓	-19.962	-1	-1.068	1	-131138.297	-69157.822	0.000	0.000000	
TOTAL..	ソツカクスク= 4	360 0 0		92.427	0.000	0✓	-0.001	1✓			ハイイウキヨホウ=	1048.337426	
											1/2=	524.16	+0.00
											メンセキ=	524.16✓	

\*\*\* メンセキ ケイサン (ハイオウキヨホウ) \*\*\*

チクメイ ... ミヤコタチク トチクカクセイリシキヨウ

セリ NO... 116BL <sup>(10)</sup>~~(11)~~

NO.	NO.	ANGLE	AZIMUTH	LENGTH	DX	*	DY	*	X	Y	DMD	2A	カ-フメンセキ
116BL-37	116BL-22✓		183 3 43						-131137.310	-69176.482			
116BL-22	116BL-23✓	89 58 1	93 1 44✓	18.686✓	-0.987	0	18.660	0	-131138.297	-69157.822	17.593	-17.364291	
116BL-23	116BL-39✓	90 1 59	3 3 43✓	19.991✓	19.962	1	1.068	-1	-131118.334	-69156.755	37.320	745.019160	
116BL-39	116BL-37✓	90 0 0	273 3 43✓	18.686✓	0.998	0	-18.659	-1	-131117.336	-69175.415	19.727	19.687546	
116BL-37	116BL-22✓	90 0 0	183 3 43✓	20.002✓	-19.973	-1	-1.068	1	-131137.310	-69176.482	0.000	0.000000	
TOTAL..	ソツカクスウ= 4	360 0 0		77.365	0.000	0	0.001	-1			ハイメンセキ=	747.342415	
											1/2=	373.67	+0.00
											メンセキ=	373.67✓	

セリ NO... 116BL <sup>(11)</sup>~~(12)~~

116BL-35	116BL-21✓		183 3 43						-131136.578	-69190.316			
116BL-21	116BL-22✓	89 58 1	93 1 44✓	13.853✓	-0.732	0	13.834	0	-131137.310	-69176.482	12.766	-9.344712	
116BL-22	116BL-37✓	90 1 59	3 3 43✓	20.002✓	19.973	1	1.068	-1	-131117.336	-69175.415	27.667	552.620658	
116BL-37	116BL-35✓	90 0 0	273 3 43✓	13.853✓	0.740	0	-13.833	0	-131116.596	-69189.248	14.901	11.026740	
116BL-35	116BL-21✓	90 0 0	183 3 43✓	20.011✓	-19.982	0	-1.069	1	-131136.578	-69190.316	0.000	0.000000	
TOTAL..	ソツカクスウ= 4	360 0 0		67.719	-0.001	1	0.000	0			ハイメンセキ=	554.302686	
											1/2=	277.15	+0.00
											メンセキ=	277.15✓	



\*\*\* ムンセキ ケイサン (ハイオウキヨホウ) \*\*\*

チクメイ ... ミヤコタチク トチクカクセイリシキヨウ

セトリ NO... 116BL<sup>(12)</sup>~~(13)~~

NO.	NO.	ANGLE	AZIMUTH	LENGTH	DX	*	DY	*	X	Y	DMD	2A	カ-フムンセキ
116BL-33	116BL- 1✓		183 2 26						-131128.480	-69209.636			
116BL- 1	116BL- 2✓	135 10 13	138 12 39✓	9.961✓	-7.427	0	6.638	0	-131135.907	-69202.998	5.951	-44.198077	
116BL- 2	116BL-21✓	134 49 5	93 1 44✓	12.700✓	-0.671	0	12.682	0	-131136.578	-69190.316	25.271	-16.956841	
116BL-21	116BL-35✓	90 1 59	3 3 43✓	20.011✓	19.982	0	1.069	-1	-131116.596	-69189.248	39.021	779.717622	
116BL-35	116BL-33✓	90 0 0	273 3 43✓	19.730✓	1.054	0	-19.702	1	-131115.542	-69208.949	20.388	21.488952	
116BL-33	116BL- 1✓	89 58 43	183 2 26✓	12.955✓	-12.937	-1	-0.687	0	-131128.480	-69209.636	0.000	0.000000	
TOTAL..	ソツカク入ウ= 5	540 0 0		75.357	0.001	-1✓	0.000	0✓			ハイムンセキ=	740.051656	
											1/2=	370.02	+0.00
											ムンセキ=	370.02✓	

\*\*\* ケツコウ トラハ"-入 \*\*\*

チウメイ ... ミヤコタ"チク トチクカクセイリシ"キ"ヨウ

NO.	NO.	ANGLE	*	AZIMUTH	LENGTH	DX	*	DY	*	X	Y	NO.
	116BL- 2									-131135.907	-69202.998	116BL- 2
116BL- 2	116BL-21		93	1 44	12.700	-0.671	0	12.682	0	-131136.578	-69190.316	116BL-21
116BL-21	116BL-22	180 0 0	93	1 44	13.853	-0.732	0	13.834	0	-131137.310	-69176.482	116BL- 22
116BL-22	116BL-23	180 0 0	93	1 44	18.686	-0.987	0	18.660	0	-131138.297	-69157.822	116BL-23
116BL-23	116BL-24	180 0 0	93	1 44	26.230	-1.386	0	26.193	0	-131139.683	-69131.629	116BL- 24
116BL-24	116BL- 3	180 0 0	93	1 44	12.387	-0.655	0	12.370	0	-131140.338	-69119.259	116BL- 3
	TOTAL..	720 0 0			83.856	-4.431	0	83.739	0			
	116BL- 3									-131140.338	-69119.259	116BL- 3
116BL- 3	116BL-25		93	5 24	13.350	-0.720	0	13.331	0	-131141.058	-69105.928	116BL- 25
116BL-25	116BL- 4	180 0 0	93	5 24	12.176	-0.656	0	12.158	0	-131141.714	-69093.770	116BL- 4
	TOTAL..	180 0 0			25.526	-1.376	0	25.489	0			
	116BL- 5									-131138.379	-69090.020	116BL- 5
116BL- 5	116BL-26		3	3 26	16.450	16.427	0	0.877	0	-131121.952	-69089.143	116BL- 26
116BL-26	116BL- 6	180 0 0	3	3 26	16.513	16.489	0	0.881	0	-131105.463	-69088.262	116BL- 6
	TOTAL..	180 0 0			32.963	32.916	0	1.758	0			
	116BL- 7									-131101.760	-69091.647	116BL- 7
116BL- 7	116BL-27		272	58 56	12.162	0.633	0	-12.146	0	-131101.127	-69103.793	116BL- 27
116BL-27	116BL- 8	180 0 0	272	58 56	9.462	0.492	0	-9.449	0	-131100.635	-69113.242	116BL- 8
	TOTAL..	180 0 0			21.624	1.125	0	-21.595	0			
	116BL- 8									-131100.635	-69113.242	116BL- 8

\*\*\* ケツコウ トラハス \*\*\*

チクメイ ... ミヤコタチク トチクカクセイリシキヨウ

NO.	NO.	ANGLE	*	AZIMUTH	LENGTH	DX	*	DY	*	X	Y	NO.
116BL-8	116BL-28			273 3 43	16.275	0.869	1	-16.252	1	-131099.765	-69129.493	116BL-28
116BL-28	116BL-29	180 0 0		273 3 43	18.207	0.973	0	-18.181	-1	-131098.792	-69147.675	116BL-29
116BL-29	116BL-30	180 0 0		273 3 43	17.183	0.918	-1	-17.158	0	-131097.875	-69164.833	116BL-30
116BL-30	116BL-31	180 0 0		273 3 43	17.183	0.918	0	-17.158	-1	-131096.957	-69181.992	116BL-31
116BL-31	116BL-9	180 0 0		273 3 43	25.933	1.385	0	-25.896	0	-131095.572	-69207.888	116BL-9
	TOTAL..	720 0 0			94.781	5.063	0	-94.645	-1			
	116BL-9									-131095.572	-69207.888	116BL-9
116BL-9	116BL-32			183 2 26	15.643	-15.621	1	-0.830	0	-131111.192	-69208.718	116BL-32
116BL-32	116BL-33	180 0 0		183 2 26	4.356	-4.350	0	-0.231	0	-131115.542	-69208.949	116BL-33
116BL-33	116BL-1	180 0 0		183 2 26	12.955	-12.937	-1	-0.687	0	-131128.480	-69209.636	116BL-1
	TOTAL..	360 0 0			32.954	-32.908	0	-1.748	0			
	116BL-33									-131115.542	-69208.949	116BL-33
116BL-33	116BL-36			93 3 43	25.926	-1.385	0	25.889	0	-131116.927	-69183.060	116BL-36
116BL-36	116BL-38	180 0 0		93 3 43	17.183	-0.918	0	17.158	0	-131117.845	-69165.902	116BL-38
116BL-38	116BL-40	180 0 0		93 3 43	17.183	-0.918	0	17.158	1	-131118.763	-69148.743	116BL-40
116BL-40	116BL-41	180 0 0		93 3 43	18.207	-0.973	0	18.181	0	-131119.736	-69130.562	116BL-41
116BL-41	116BL-42	180 0 0		93 3 43	25.737	-1.375	0	25.700	0	-131121.111	-69104.862	116BL-42
116BL-42	116BL-26	180 0 0		93 3 43	15.741	-0.841	0	15.719	0	-131121.952	-69089.143	116BL-26
	TOTAL..	900 0 0			119.977	-6.410	0	119.805	1			
	116BL-33									-131115.542	-69208.949	116BL-33
116BL-33	116BL-35			93 3 43	19.730	-1.054	0	19.702	-1	-131116.596	-69189.248	116BL-35

\*\*\* ケツコウ トラハス \*\*\*

チクメイ ... ミヤコタチク トチクカクセイリシキヨウ

NO.	NO.	ANGLE	*	AZIMUTH	LENGTH	DX	*	DY	*	X	Y	NO.
116BL-35	116BL-37	180 0 0		93 3 43	13.853	-0.740	0	13.833	0	-131117.336	-69175.415	116BL-37
116BL-37	116BL-39	180 0 0		93 3 43	18.686	-0.998	0	18.659	1	-131118.334	-69156.755	116BL-39
116BL-39	116BL-41	180 0 0		93 3 43	26.230	-1.401	-1	26.193	0	-131119.736	-69130.562	116BL-41
116BL-41	116BL-42	180 0 0		93 3 43	25.737	-1.375	0	25.700	0	-131121.111	-69104.862	116BL-42
116BL-42	116BL-26	180 0 0		93 3 43	15.741	-0.841	0	15.719	0	-131121.952	-69089.143	116BL-26
	TOTAL..	900 0 0			119.977	-6.409	-1	119.806	0			
	116BL-33									-131115.542	-69208.949	116BL-33
116BL-33	116BL-35			93 3 43	19.730	-1.054	0	19.702	-1	-131116.596	-69189.248	116BL-35
116BL-35	116BL-36	180 0 0		93 3 43	6.196	-0.331	0	6.187	1	-131116.927	-69183.060	116BL-36
116BL-36	116BL-37	180 0 0		93 3 43	7.657	-0.409	0	7.646	-1	-131117.336	-69175.415	116BL-37
116BL-37	116BL-38	180 0 0		93 3 43	9.526	-0.509	0	9.512	1	-131117.845	-69165.902	116BL-38
116BL-38	116BL-39	180 0 0		93 3 43	9.160	-0.489	0	9.147	0	-131118.334	-69156.755	116BL-39
116BL-39	116BL-40	180 0 0		93 3 43	8.023	-0.429	0	8.012	0	-131118.763	-69148.743	116BL-40
116BL-40	116BL-41	180 0 0		93 3 43	18.207	-0.973	0	18.181	0	-131119.736	-69130.562	116BL-41
116BL-41	116BL-42	180 0 0		93 3 43	25.737	-1.375	0	25.700	0	-131121.111	-69104.862	116BL-42
116BL-42	116BL-26	180 0 0		93 3 43	15.741	-0.841	0	15.719	0	-131121.952	-69089.143	116BL-26
	TOTAL..	1440 0 0			119.977	-6.410	0	119.806	0			
	116BL-28									-131099.765	-69129.493	116BL-28
116BL-28	116BL-41			183 3 43	19.999	-19.970	-1	-1.068	-1	-131119.736	-69130.562	116BL-41
116BL-41	116BL-24	180 0 0		183 3 43	19.976	-19.947	0	-1.067	0	-131139.683	-69131.629	116BL-24
	TOTAL..	180 0 0			39.975	-39.917	-1	-2.135	-1			

\*\*\* ケツコウ トラハース \*\*\*

チクメイ ... ミヤコタチク トチクカクセイリシキヨウ

NO.	NO.	ANGLE	*	AZIMUTH	LENGTH	DX	*	DY	*	X	Y	N.O.
	116BL-27 ✓✓									-131101.127	-69103.793	116BL-27
116BL-27	116BL-42 ✓✓		183	3 43 ✓	20.013 ✓	-19.984	0	-1.069	0	-131121.111	-69104.862	116BL-42
116BL-42	116BL-25 ✓✓	180 0 0	183	3 43 ✓	19.975 ✓	-19.946	-1	-1.067	1	-131141.058	-69105.928	116BL-25
	TOTAL...	180 0 0			39.988 ✓	-39.930	-1 ✓	-2.136	1 ✓			

チクメイ ... ミヤコタチク トチクカクセイリシキヨウ

NO.	NO.	ANGLE *	AZIMUTH	LENGTH	DX	*	DY	*	X	Y	NO.
	116BL-31								-131096.957	-69181.992	116BL-31
116BL-31	116BL-34		183 3 43	15.643	-15.621	1	-0.836	1	-131112.577	-69182.827	116BL-34
116BL-34	116BL-36	180 0 0	183 3 43	4.356	-4.350	0	-0.233	0	-131116.927	-69183.060	116BL-36
	TOTAL..	180 0 0		19.999	-19.971	1	-1.069	1			