

略 図

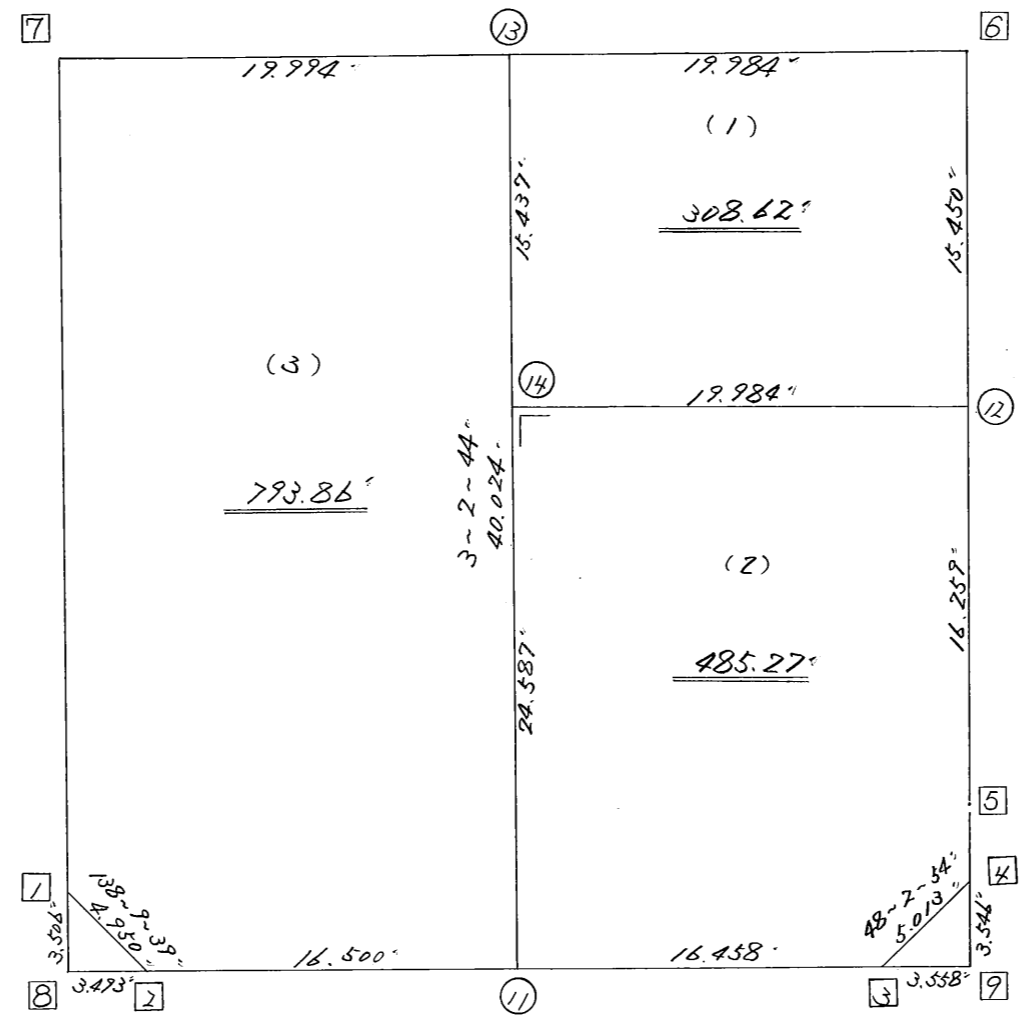
街区面積 =  $\frac{1587.77}{m^2}$   
 画地面積 =  $\frac{1587.75}{m^2}$

$$\frac{273-0-24'}{37.978'}$$

$$\frac{183-2-44'}{36.495'}$$

$$\frac{31.709'}{3-2-40'}$$

$$\frac{4.792'}{2-50-6'}$$



$$\frac{32.958'}{93-4-24'}$$

街区点番号 1 ~ 9 筆界点番号 11 ~ 14 画地番号 ( 1 ) ~ ( 3 )

\*\*\* メンセキ ケイサン (ハイイウキヨホウ) \*\*\*

チクメイ ... ミヤコタチク トチクカクセイリシキヨウ

セリ NO... 122BL ✓

NO.	NO.	ANGLE	AZIMUTH	LENGTH	DX	*	DY	*	X	Y	DMD	2A	カーブメンセキ
122BL- 7	122BL- 1 ✓		183 2 44						-131233.886	-69215.268			
122BL- 1	122BL- 2 ✓	135 6 55	138 9 39 ✓	4.950 ✓	-3.688	0	3.302	0	-131237.574	-69211.966	1.363	-5.026744	
122BL- 2	122BL- 3 ✓	134 54 45	93 4 24 ✓	32.958 ✓	-1.767	0	32.911	0	-131239.341	-69179.055	37.576	-66.396792	
122BL- 3	122BL- 4 ✓	134 58 30	48 2 54 ✓	5.013 ✓	3.351	0	3.728	0	-131235.990	-69175.327	74.215	248.694465	
122BL- 4	122BL- 5 ✓	134 47 12	2 50 6 ✓	4.792 ✓	4.786	0	0.237	0	-131231.204	-69175.090	78.180	374.169480	
122BL- 5	122BL- 6 ✓	180 12 34	3 2 40 ✓	31.709 ✓	31.664	0	1.684	0	-131199.540	-69173.406	80.101	2536.318064	
122BL- 6	122BL- 7 ✓	89 57 44	273 0 24 ✓	39.978 ✓	2.097	0	-39.923	0	-131197.443	-69213.329	41.862	87.784614	
122BL- 7	122BL- 1 ✓	90 2 20	183 2 44 ✓	36.495 ✓	-36.443	0	-1.939	0	-131233.886	-69215.268	0.000	0.000000	
TOTAL..	ソツカク入ウ= 7	900 0 0		155.895	0.000	0 ✓	0.000	0 ✓			ハイメンセキ=	3175.543087	
											1/2=	1587.77	+0.00
											メンセキ=	1587.77 ✓	

\*\*\* メンセキ ケイサン (ハイイウキヨホウ) \*\*\*

チクメイ ... ミヤコタチク トチクカクセイリヨキヨウ

											セリ NO... 122BL(1)✓				
NO.	NO.	ANGLE		AZIMUTH		LENGTH	DX	*	DY	*	X	Y	DMD	2A	カーブメンセキ
122BL- 7	122BL- 1✓			183	2 44						-131233.886	-69215.268			
122BL- 1	122BL- 2✓	135	6 55	138	9 39✓	4.950✓	-3.688	0	3.302	0	-131237.574	-69211.966	1.363	-5.026744	
122BL- 2	122BL-11✓	134	54 45	93	4 24✓	16.500✓	-0.885	0	16.476	1	-131238.459	-69195.489	21.142	-18.710670	
122BL-11	122BL-13✓	89	58 20	3	2 44✓	40.024✓	39.967	0	2.126	0	-131198.492	-69193.363	39.745	1588.488415	
122BL-13	122BL- 7✓	89	57 40	273	0 24✓	19.994✓	1.049	0	-19.966	0	-131197.443	-69213.329	21.905	22.978345	
122BL- 7	122BL- 1✓	90	2 20	183	2 44✓	36.495✓	-36.443	0	-1.939	0	-131233.886	-69215.268	0.000	0.000000	
TOTAL..	ソツカク入ウ= 5	540	0 0			117.963	0.000	0✓	-0.001	1✓			ハイイウキヨホウ=	1587.729346	
													1/2=	793.86	+0.00
													メンセキ=	793.86✓	

											セリ NO... 122BL(2)✓				
122BL-14	122BL-11✓			183	2 44						-131238.459	-69195.489			
122BL-11	122BL- 3✓	90	1 40	93	4 24✓	16.458✓	-0.882	0	16.434	0	-131239.341	-69179.055	15.128	-13.342896	
122BL- 3	122BL- 4✓	134	58 30	48	2 54✓	5.013✓	3.351	0	3.728	0	-131235.990	-69175.327	35.290	118.256790	
122BL- 4	122BL- 5✓	134	47 12	2	50 6✓	4.792✓	4.786	0	0.237	0	-131231.204	-69175.090	39.255	187.874430	
122BL- 5	122BL-12✓	180	12 34	3	2 40✓	16.259✓	16.236	0	0.864	-1	-131214.968	-69174.227	40.355	655.203780	
122BL-12	122BL-14✓	90	0 4	273	2 44✓	19.984✓	1.062	-1	-19.956	0	-131213.907	-69194.183	21.262	22.558982	
122BL-14	122BL-11✓	90	0 0	183	2 44✓	24.587✓	-24.552	0	-1.306	0	-131238.459	-69195.489	0.000	0.000000	
TOTAL..	ソツカク入ウ= 6	720	0 0			87.093	0.001	-1✓	0.001	-1✓			ハイイウキヨホウ=	970.551086	
													1/2=	485.27	+0.00
													メンセキ=	485.27✓	

\*\*\* メンセキ ケイサン (ハイオウキヨホウ) \*\*\*

チクメイ ... ミヤコタチク トチクカクセイリシキヨウ

ペリ NO... 122BL(3) ✓

NO.	NO.	ANGLE	AZIMUTH	LENGTH	DX	*	DY	*	X	Y	DMD	2A	カ-ジメンセキ
122BL-13	122BL-14 ✓		183 2 44						-131213.907	-69194.183			
122BL-14	122BL-12 ✓	90 0 0	93 2 44 ✓	19.984 ✓	-1.062	1	19.956	0	-131214.968	-69174.227	19.136	-20.303296	
122BL-12	122BL- 6 ✓	89 59 56	3 2 40 ✓	15.450 ✓	15.428	0	0.821	0	-131199.540	-69173.406	39.913	615.777764	
122BL- 6	122BL-13 ✓	89 57 44	273 0 24 ✓	19.984 ✓	1.048	0	-19.956	-1	-131198.492	-69193.363	20.777	21.774296	
122BL-13	122BL-14 ✓	90 2 20	183 2 44 ✓	15.437 ✓	-15.415	0	-0.820	0	-131213.907	-69194.183	0.000	0.000000	
TOTAL..	ソツカクスウ = 4	360 0 0		70.855	-0.001	1 ✓	0.001	-1 ✓			ハイメンセキ =	617.248764	
											1/2 =	308.62	+0.00
											メンセキ =	308.62 ✓	

\*\*\* ケツコウ トラハース \*\*\*

チクメイ ... ミヤコタチク トチクカクセイリシキヨウ

NO.	NO.	ANGLE	*	AZIMUTH	LENGTH	DX	*	DY	*	X	Y	NO.
	122BL- 2 ✓									-131237.574	-69211.966	122BL- 2
122BL- 2	122BL-11 ✓			93 4 24 ✓	16.500 ✓	-0.885	0 ✓	16.476	1 ✓	-131238.459	-69195.489	122BL-11
122BL-11	122BL- 3 ✓	180 0 0		93 4 24 ✓	16.458 ✓	-0.882	0 ✓	16.434	0 ✓	-131239.341	-69179.055	122BL- 3
	TOTAL..	180 0 0			32.958 ✓	-1.767	0 ✓	32.910	1 ✓			
	122BL- 5 ✓									-131231.204	-69175.090	122BL- 5
122BL- 5	122BL-12 ✓			3 2 40 ✓	16.259 ✓	16.236	0 ✓	0.864	-1 ✓	-131214.968	-69174.227	122BL-12
122BL-12	122BL- 6 ✓	180 0 0		3 2 40 ✓	15.450 ✓	15.428	0 ✓	0.821	0 ✓	-131199.540	-69173.406	122BL- 6
	TOTAL..	180 0 0			31.709 ✓	31.664	0 ✓	1.685	-1 ✓			
	122BL- 6 ✓									-131199.540	-69173.406	122BL- 6
122BL- 6	122BL-13 ✓			273 0 24 ✓	19.984 ✓	1.048	0 ✓	-19.956	-1 ✓	-131198.492	-69193.363	122BL-13
122BL-13	122BL- 7 ✓	180 0 0		273 0 24 ✓	19.994 ✓	1.049	0 ✓	-19.966	0 ✓	-131197.443	-69213.329	122BL- 7
	TOTAL..	180 0 0			39.978 ✓	2.097	0 ✓	-39.922	-1 ✓			
	122BL-11 ✓									-131238.459	-69195.489	122BL-11
122BL-11	122BL-14 ✓			3 2 44 ✓	24.587 ✓	24.552	0 ✓	1.306	0 ✓	-131213.907	-69194.183	122BL-14
122BL-14	122BL-13 ✓	180 0 0		3 2 44 ✓	15.437 ✓	15.415	0 ✓	0.820	0 ✓	-131198.492	-69193.363	122BL-13
	TOTAL..	180 0 0			40.024 ✓	39.967	0 ✓	2.126	0 ✓			