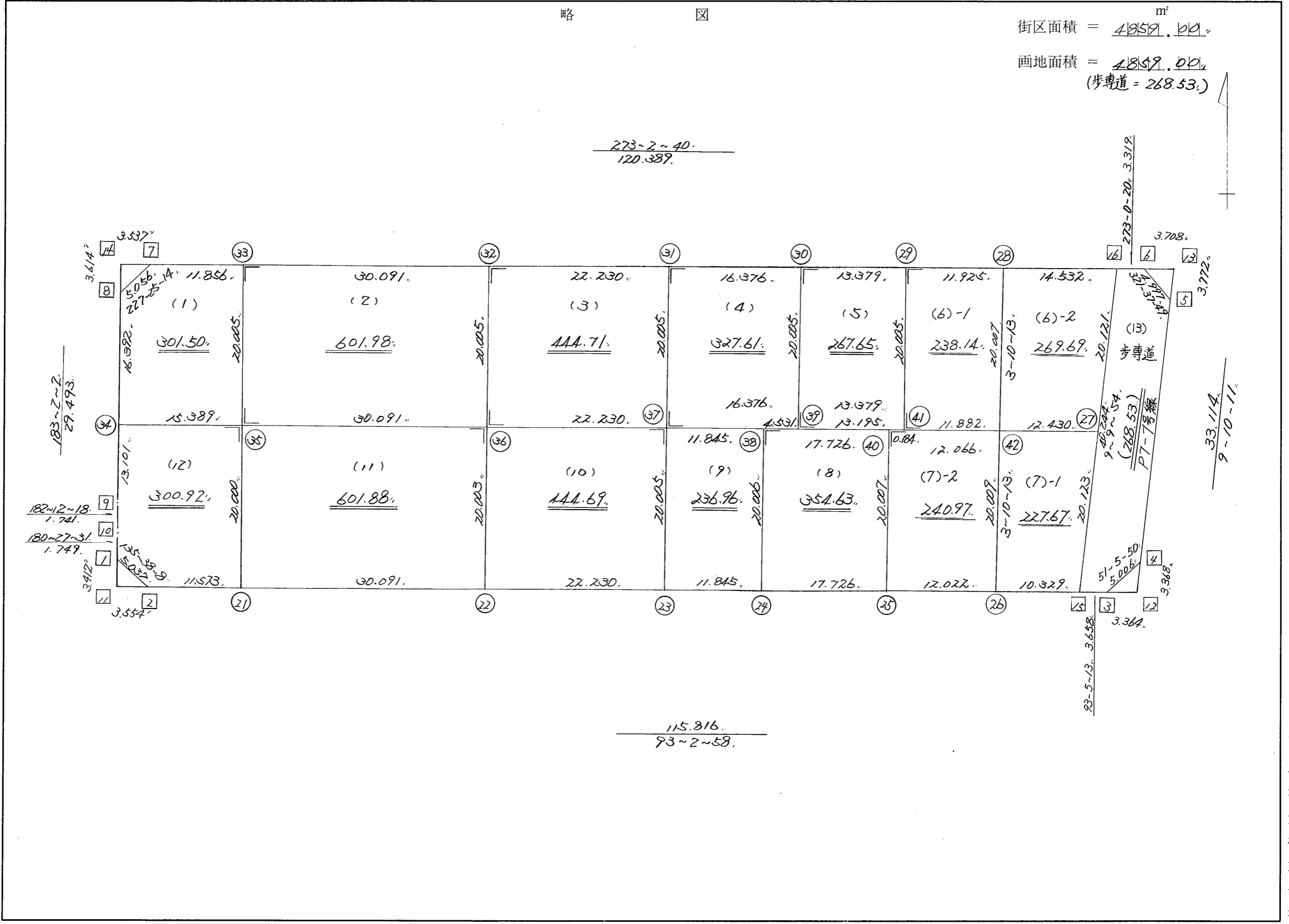


略 図

街区面積 = 4859.00 m<sup>2</sup>  
 画地面積 = 4859.00 m<sup>2</sup>  
 (歩道 = 268.53)



街区点番号 1 ~ 14 筆界点番号 21 ~ 42 画地番号 ( 1 ) ~ ( 13 )

\*\*\* メンセキ ケイサン (ハイイウキヨホウ) \*\*\*

チクメイ ... ミヤコタチク トチクカクセイリヨキヨウ

NO.	NO.	ANGLE	AZIMUTH	LENGTH	DX	*	DY	*	X	Y	DMD	2A	カ-フメンセキ
123BL-10	123BL- 1 ✓		180 27 31						-131282.365	-69171.715			
123BL- 1	123BL- 2 ✓	135 10 37	135 38 8 ✓	5.037 ✓	-3.601	0	3.522	0	-131285.966	-69168.193	3.508	-12.632308	
123BL- 2	123BL-15 ✓	137 24 50	93 2 58 ✓	115.816 ✓	-6.161	0	115.652	0	-131292.127	-69052.541	122.682	-755.843802	
123BL-15	123BL-16 ✓	96 6 56	9 9 54 ✓	40.244 ✓	39.730	0	6.410	0	-131252.397	-69046.131	244.744	9723.679120	
123BL-16	123BL- 7 ✓	83 52 46	273 2 40 ✓	120.389 ✓	6.394	0	-120.219	0	-131246.003	-69166.350	130.935	837.198390	
123BL- 7	123BL- 8 ✓	134 22 34	227 25 14 ✓	5.056 ✓	-3.421	0	-3.723	0	-131249.424	-69170.073	6.993	-23.923053	
123BL- 8	123BL- 9 ✓	135 36 48	183 2 2 ✓	29.493 ✓	-29.452	0	-1.561	0	-131278.876	-69171.634	1.709	-50.333468	
123BL- 9	123BL-10 ✓	179 10 16	182 12 18 ✓	1.741 ✓	-1.740	0	-0.067	0	-131280.616	-69171.701	0.081	-0.140940	
123BL-10	123BL- 1 ✓	178 15 13	180 27 31 ✓	1.749 ✓	-1.749	0	-0.014	0	-131282.365	-69171.715	0.000	0.000000	
TOTAL..	ソツカクスウ= 8	1080	0 0	319.525	0.000	0 ✓	0.000	0 ✓			ハイイウキヨホウ=	9718.003939	
											1/2=	4859.00	+0.00
											メンセキ=	4859.00 ✓	

\*\*\* メンセキ ケイサン (ハイイウキヨホウ) \*\*\*

チクメイ ... ミヤコタチク トチクカクセイリシキヨウ

セリ NO... 123BL(1) ✓

NO.	NO.	ANGLE	AZIMUTH	LENGTH	DX	*	DY	*	X	Y	DMD	2A	カーブメンセキ
123BL- 8	123BL-34 ✓		183 2 2						-131265.793	-69170.941			
123BL-34	123BL-35 ✓	90 0 38	93 2 40 ✓	15.389 ✓	-0.817	0	15.367	0	-131266.610	-69155.574	14.499	-11.845683	
123BL-35	123BL-33 ✓	90 0 0	3 2 40 ✓	20.005 ✓	19.977	0	1.062	1	-131246.633	-69154.511	30.929	617.868633	
123BL-33	123BL- 7 ✓	90 0 0	273 2 40 ✓	11.856 ✓	0.630	0	-11.839	0	-131246.003	-69166.350	20.153	12.696390	
123BL- 7	123BL- 8 ✓	134 22 34	227 25 14 ✓	5.056 ✓	-3.421	0	-3.723	0	-131249.424	-69170.073	4.591	-15.705811	
123BL- 8	123BL-34 ✓	135 36 48	183 2 2 ✓	16.392 ✓	-16.369	0	-0.868	0	-131265.793	-69170.941	0.000	0.000000	
TOTAL..	ソツカク入ウ= 5	540 0 0		68.698	0.000	0 ✓	-0.001	1 ✓			ハイイウキヨホウ=	603.013529	
											1/2=	301.50	+0.00
											メンセキ=	301.50 ✓	

セリ NO... 123BL(2) ✓

123BL-33	123BL-35 ✓		183 2 40						-131266.610	-69155.574			
123BL-35	123BL-36 ✓	90 0 0	93 2 40 ✓	30.091 ✓	-1.598	0	30.049	0	-131268.208	-69125.525	28.986	-46.319628	
123BL-36	123BL-32 ✓	90 0 0	3 2 40 ✓	20.005 ✓	19.977	0	1.062	1	-131248.231	-69124.462	60.098	1200.577746	
123BL-32	123BL-33 ✓	90 0 0	273 2 40 ✓	30.091 ✓	1.598	0	-30.049	0	-131246.633	-69154.511	31.112	49.716976	
123BL-33	123BL-35 ✓	90 0 0	183 2 40 ✓	20.005 ✓	-19.977	0	-1.062	-1	-131266.610	-69155.574	0.000	0.000000	
TOTAL..	ソツカク入ウ= 4	360 0 0		100.192	0.000	0 ✓	0.000	0 ✓			ハイイウキヨホウ=	1203.975094	
											1/2=	601.98	+0.00
											メンセキ=	601.98 ✓	

\*\*\* メンセキ ケイサン (ハイオウキヨホウ) \*\*\*

チクメイ ... ミヤコタチク トチクカクセイリシキヨウ

セリ NO... 123BL(3) ✓

NO.	NO.	ANGLE	AZIMUTH	LENGTH	DX	*	DY	*	X	Y	DMD	2A	カーブメンセキ
123BL-32	123BL-36 ✓		183 2 40						-131268.208	-69125.525			
123BL-36	123BL-37 ✓	90 0 0	93 2 40 ✓	22.230 ✓	-1.181	0	22.199	0	-131269.389	-69103.326	21.136	-24.961616	
123BL-37	123BL-31 ✓	90 0 0	3 2 40 ✓	20.005 ✓	19.977	0	1.062	0	-131249.412	-69102.264	44.397	886.918869	
123BL-31	123BL-32 ✓	90 0 0	273 2 40 ✓	22.230 ✓	1.181	0	-22.199	1	-131248.231	-69124.462	23.261	27.471241	
123BL-32	123BL-36 ✓	90 0 0	183 2 40 ✓	20.005 ✓	-19.977	0	-1.062	-1	-131268.208	-69125.525	0.000	0.000000	
TOTAL..	ソツカクスウ= 4	360 0 0		84.470	0.000	0 ✓	0.000	0 ✓			ハイメンセキ=	889.428494	
											1/2=	444.71	+0.00
											メンセキ=	444.71 ✓	

セリ NO... 123BL(4) ✓

123BL-31	123BL-37 ✓		183 2 40						-131269.389	-69103.326			
123BL-37	123BL-39 ✓	90 0 0	93 2 40 ✓	16.376 ✓	-0.870	0	16.353	0	-131270.259	-69086.973	15.291	-13.303170	
123BL-39	123BL-30 ✓	90 0 0	3 2 40 ✓	20.005 ✓	19.977	0	1.062	1	-131250.282	-69085.910	32.707	653.387739	
123BL-30	123BL-31 ✓	90 0 0	273 2 40 ✓	16.376 ✓	0.870	0	-16.353	-1	-131249.412	-69102.264	17.416	15.151920	
123BL-31	123BL-37 ✓	90 0 0	183 2 40 ✓	20.005 ✓	-19.977	0	-1.062	0	-131269.389	-69103.326	0.000	0.000000	
TOTAL..	ソツカクスウ= 4	360 0 0		72.762	0.000	0 ✓	0.000	0 ✓			ハイメンセキ=	655.236489	
											1/2=	327.61	+0.00
											メンセキ=	327.61 ✓	

\*\*\* メンセキ ケイサン (ハイイウキヨホウ) \*\*\*

チクメイ ... ミヤコタチク トチクカクセイリシキヨウ

ペリ NO... 123BL(5) ✓

NO.	NO.	ANGLE	AZIMUTH	LENGTH	DX	*	DY	*	X	Y	DMD	2A	カ-フメンセキ
123BL-30	123BL-39 ✓		183 2 40						-131270.259	-69086.973			
123BL-39	123BL-41 ✓	90 0 0	93 2 40 ✓	13.379 ✓	-0.711	0	13.360	0	-131270.970	-69073.613	12.297	-8.743167	
123BL-41	123BL-29 ✓	90 0 0	3 2 40 ✓	20.005 ✓	19.977	1	1.062	1	-131250.992	-69072.550	26.720	533.812160	
123BL-29	123BL-30 ✓	90 0 0	273 2 40 ✓	13.379 ✓	0.711	-1	-13.360	0	-131250.282	-69085.910	14.423	10.240330	
123BL-30	123BL-39 ✓	90 0 0	183 2 40 ✓	20.005 ✓	-19.977	0	-1.062	-1	-131270.259	-69086.973	0.000	0.000000	
TOTAL..	ソツカクスウ= 4	360 0 0		66.768	0.000	0 ✓	0.000	0 ✓			ハイイウキヨホウ=	535.309323	
											1/2=	267.65	+0.00
											メンセキ=	267.65 ✓	

ペリ NO... 123BL(6)-1 ✓

123BL-29	123BL-41 ✓		183 2 40						-131270.970	-69073.613			
123BL-41	123BL-42 ✓	90 0 0	93 2 40 ✓	11.882 ✓	-0.631	0	11.865	0	-131271.601	-69061.748	10.802	-6.816062	
123BL-42	123BL-28 ✓	90 7 33	3 10 13 ✓	20.007 ✓	19.976	0	1.106	0	-131251.625	-69060.642	23.773	474.889448	
123BL-28	123BL-29 ✓	89 52 27	273 2 40 ✓	11.925 ✓	0.633	0	-11.908	0	-131250.992	-69072.550	12.971	8.210643	
123BL-29	123BL-41 ✓	90 0 0	183 2 40 ✓	20.005 ✓	-19.977	-1	-1.062	-1	-131270.970	-69073.613	0.000	0.000000	
TOTAL..	ソツカクスウ= 4	360 0 0		63.819	0.001	-1 ✓	0.001	-1 ✓			ハイイウキヨホウ=	476.284029	
											1/2=	238.14	+0.00
											メンセキ=	238.14 ✓	

\*\*\* ムセキ ケイサン (ハイオウキヨホウ) \*\*\*

チクメイ ... ミヤコタチク トチクカクセイリシキヨウ

ペリ NO... 123BL(6)-2 ✓

NO.	NO.	ANGLE	AZIMUTH	LENGTH	DX	*	DY	*	X	Y	DMD	2A	カ-フムセキ
123BL-28	123BL-42 ✓		183 10 13						-131271.601	-69061.748			
123BL-42	123BL-27 ✓	89 52 27	93 2 40 ✓	12.430 ✓	-0.660	0	12.412	0	-131272.261	-69049.336	11.306	-7.461960	
123BL-27	123BL-16 ✓	96 7 14	9 9 54 ✓	20.121 ✓	19.864	0	3.205	0	-131252.397	-69046.131	26.923	534.798472	
123BL-16	123BL-28 ✓	83 52 46	273 2 40 ✓	14.532 ✓	0.772	0	-14.511	0	-131251.625	-69060.642	15.617	12.056324	
123BL-28	123BL-42 ✓	90 7 33	183 10 13 ✓	20.007 ✓	-19.976	0	-1.106	0	-131271.601	-69061.748	0.000	0.000000	
TOTAL..	ソツカクスウ= 4	360	0 0	67.090	0.000	0 ✓	0.000	0 ✓			ハイムセキ=	539.392836	
											1/2=	269.69	+0.00
											ムセキ=	269.69 ✓	

ペリ NO... 123BL(7)-1 ✓

123BL-42	123BL-26 ✓		183 10 13						-131291.579	-69062.855			
123BL-26	123BL-15 ✓	89 52 45	93 2 58 ✓	10.329 ✓	-0.549	1	10.314	0	-131292.127	-69052.541	9.207	-5.045436	
123BL-15	123BL-27 ✓	96 6 56	9 9 54 ✓	20.123 ✓	19.866	0	3.205	0	-131272.261	-69049.336	22.726	451.474716	
123BL-27	123BL-42 ✓	83 52 46	273 2 40 ✓	12.430 ✓	0.660	0	-12.412	0	-131271.601	-69061.748	13.519	8.922540	
123BL-42	123BL-26 ✓	90 7 33	183 10 13 ✓	20.009 ✓	-19.978	0	-1.107	0	-131291.579	-69062.855	0.000	0.000000	
TOTAL..	ソツカクスウ= 4	360	0 0	62.891	-0.001	1 ✓	0.000	0 ✓			ハイムセキ=	455.351820	
											1/2=	227.67	+0.00
											ムセキ=	227.67 ✓	

\*\*\* メンセキ ケイサン (ハイオウキヨホウ) \*\*\*

チクメイ ... ミヤコダチク トチクカクセイリシキヨウ

セリ NO... 123BL(7)-2 ✓

NO.	NO.	ANGLE	AZIMUTH	LENGTH	DX	*	DY	*	X	Y	DMD	2A	カ-フメンセキ
123BL-40	123BL-25 ✓		183 2 40						-131290.939	-69074.860			
123BL-25	123BL-26 ✓	90 0 18	93 2 58 ✓	12.022 ✓	-0.640	0	12.005	0	-131291.579	-69062.855	10.942	-7.002880	
123BL-26	123BL-42 ✓	90 7 15	3 10 13 ✓	20.009 ✓	19.978	0	1.107	0	-131271.601	-69061.748	24.054	480.550812	
123BL-42	123BL-40 ✓	89 52 27	273 2 40 ✓	12.066 ✓	0.641	0	-12.049	0	-131270.960	-69073.797	13.112	8.404792	
123BL-40	123BL-25 ✓	90 0 0	183 2 40 ✓	20.007 ✓	-19.979	0	-1.063	0	-131290.939	-69074.860	0.000	0.000000	
TOTAL..	ソツカクスウ= 4	360 0 0		64.104	0.000	0 ✓	0.000	0 ✓			ハイメンセキ=	481.952724	
											1/2=	240.97	+0.00
											メンセキ=	240.97 ✓	

セリ NO... 123BL(8) ✓

123BL-38	123BL-24 ✓		183 2 40						-131289.996	-69092.560			
123BL-24	123BL-25 ✓	90 0 18	93 2 58 ✓	17.726 ✓	-0.943	0	17.701	-1	-131290.939	-69074.860	16.638	-15.689634	
123BL-25	123BL-40 ✓	89 59 42	3 2 40 ✓	20.007 ✓	19.979	0	1.063	0	-131270.960	-69073.797	35.401	707.276579	
123BL-40	123BL-38 ✓	90 0 0	273 2 40 ✓	17.726 ✓	0.941	1	-17.701	0	-131270.018	-69091.498	18.763	17.674746	
123BL-38	123BL-24 ✓	90 0 0	183 2 40 ✓	20.006 ✓	-19.978	0	-1.063	1	-131289.996	-69092.560	0.000	0.000000	
TOTAL..	ソツカクスウ= 4	360 0 0		75.465	-0.001	1 ✓	0.000	0 ✓			ハイメンセキ=	709.261691	
											1/2=	354.63	+0.00
											メンセキ=	354.63 ✓	

\*\*\* メンセキ ケイサン (ハイオウキヨホウ) \*\*\*

チクメイ ... ミヤコタチク トチクカクセイリシキヨウ

セリ NO... 123BL(9) ✓

NO.	NO.	ANGLE	AZIMUTH	LENGTH	DX	*	DY	*	X	Y	DMD	2A	カーブメンセキ
123BL-37	123BL-23 ✓		183 2 40						-131289.366	-69104.388			
123BL-23	123BL-24 ✓	90 0 18	93 2 58 ✓	11.845 ✓	-0.630	0	11.828	0	-131289.996	-69092.560	10.766	-6.782580	
123BL-24	123BL-38 ✓	89 59 42	3 2 40 ✓	20.006 ✓	19.978	0	1.063	-1	-131270.018	-69091.498	23.656	472.599568	
123BL-38	123BL-37 ✓	90 0 0	273 2 40 ✓	11.845 ✓	0.629	0	-11.828	0	-131269.389	-69103.326	12.890	8.107810	
123BL-37	123BL-23 ✓	90 0 0	183 2 40 ✓	20.005 ✓	-19.977	0	-1.062	0	-131289.366	-69104.388	0.000	0.000000	
TOTAL...	ソツカクスウ= 4	360 0 0		63.701	0.000	0 ✓	0.001	-1 ✓			ハイメンセキ=	473.924798	
											1/2=	236.96	+0.00
											メンセキ=	236.96 ✓	

セリ NO... 123BL(10) ✓

123BL-36	123BL-22 ✓		183 2 40						-131288.183	-69126.586			
123BL-22	123BL-23 ✓	90 0 18	93 2 58 ✓	22.230 ✓	-1.183	0	22.199	-1	-131289.366	-69104.388	21.137	-25.005071	
123BL-23	123BL-37 ✓	89 59 42	3 2 40 ✓	20.005 ✓	19.977	0	1.062	0	-131269.389	-69103.326	44.397	886.918869	
123BL-37	123BL-36 ✓	90 0 0	273 2 40 ✓	22.230 ✓	1.181	0	-22.199	0	-131268.208	-69125.525	23.260	27.470060	
123BL-36	123BL-22 ✓	90 0 0	183 2 40 ✓	20.003 ✓	-19.975	0	-1.062	1	-131288.183	-69126.586	0.000	0.000000	
TOTAL...	ソツカクスウ= 4	360 0 0		84.468	0.000	0 ✓	0.000	0 ✓			ハイメンセキ=	889.383858	
											1/2=	444.69	+0.00
											メンセキ=	444.69 ✓	



\*\*\* メンセキ ケイサン (ハイオウキヨホウ) \*\*\*

チクメイ ... ミヤコタチク トチクカクセイリシキヨウ

ペリ NO... 123BL(11) ✓

NO.	NO.	ANGLE	AZIMUTH	LENGTH	DX	*	DY	*	X	Y	DMD	2A	カ-フメセキ
123BL-35	123BL-21 ✓		183 2 40						-131286.582	-69156.635			
123BL-21	123BL-22 ✓	90 0 18	93 2 58 ✓	30.091 ✓	-1.601	0	30.048	1	-131288.183	-69126.586	28.988	-46.409788	
123BL-22	123BL-36 ✓	89 59 42	3 2 40 ✓	20.003 ✓	19.975	0	1.062	-1	-131268.208	-69125.525	60.098	1200.457550	
123BL-36	123BL-35 ✓	90 0 0	273 2 40 ✓	30.091 ✓	1.598	0	-30.049	0	-131266.610	-69155.574	31.110	49.713780	
123BL-35	123BL-21 ✓	90 0 0	183 2 40 ✓	20.000 ✓	-19.972	0	-1.062	1	-131286.582	-69156.635	0.000	0.000000	
TOTAL..	ソツカクスウ= 4	360 0 0		100.185	0.000	0 ✓	-0.001	1 ✓			ハイメンセキ=	1203.761542	
											1/2=	601.88	+0.00
											メンセキ=	601.88 ✓	

ペリ NO... 123BL(12) ✓

123BL-10	123BL- 1 ✓		180 27 31						-131282.365	-69171.715			
123BL- 1	123BL- 2 ✓	135 10 37	135 38 8 ✓	5.037 ✓	-3.601	0	3.522	0	-131285.966	-69168.193	3.508	-12.632308	
123BL- 2	123BL-21 ✓	137 24 50	93 2 58 ✓	11.573 ✓	-0.616	0	11.557	1	-131286.582	-69156.635	18.588	-11.450208	
123BL-21	123BL-35 ✓	89 59 42	3 2 40 ✓	20.000 ✓	19.972	0	1.062	-1	-131266.610	-69155.574	31.207	623.266204	
123BL-35	123BL-34 ✓	90 0 0	273 2 40 ✓	15.389 ✓	0.817	0	-15.367	0	-131265.793	-69170.941	16.901	13.808117	
123BL-34	123BL- 9 ✓	89 59 22	183 2 2 ✓	13.101 ✓	-13.083	0	-0.693	0	-131278.876	-69171.634	0.841	-11.002803	
123BL- 9	123BL-10 ✓	179 10 16	182 12 18 ✓	1.741 ✓	-1.740	0	-0.067	0	-131280.616	-69171.701	0.081	-0.140940	
123BL-10	123BL- 1 ✓	178 15 13	180 27 31 ✓	1.749 ✓	-1.749	0	-0.014	0	-131282.365	-69171.715	0.000	0.000000	
TOTAL..	ソツカクスウ= 7	900 0 0		68.590	0.000	0 ✓	0.000	0 ✓			ハイメンセキ=	601.848062	
											1/2=	300.92	+0.00
											メンセキ=	300.92 ✓	

\*\*\* メンセキ ケイサン (ハ"イオウキヨホウ) \*\*\*

チクメイ... ミヤコタ"チク トチクカクセイリシ"キ"ヨウ

セイリ NO... 123BL(13)✓

NO.	NO.	ANGLE	AZIMUTH	LENGTH	DX	*	DY	*	X	Y	DMD	2A	カ-フ"メンセキ
123BL-16	123BL-15 ✓		189 9 54						-131292.127	-69052.541			
123BL-15	123BL- 3 ✓	83 55 19	93 5 13 ✓	3.658 ✓	-0.197	0	3.653	0	-131292.324	-69048.888	-2.757	0.543129	
123BL- 3	123BL- 4 ✓	138 0 37	51 5 50 ✓	5.006 ✓	3.144	0	3.896	0	-131289.180	-69044.992	4.792	15.066048	
123BL- 4	123BL- 5 ✓	138 4 21	9 10 11 ✓	33.114 ✓	32.691	0	5.277	0	-131256.489	-69039.715	13.965	456.529815	
123BL- 5	123BL- 6 ✓	132 27 38	321 37 49 ✓	4.997 ✓	3.918	0	-3.102	0	-131252.571	-69042.817	16.140	63.236520	
123BL- 6	123BL-16 ✓	131 22 31	273 0 20 ✓	3.319 ✓	0.174	0	-3.314	0	-131252.397	-69046.131	9.724	1.691976	
123BL-16	123BL-15 ✓	96 9 34	189 9 54 ✓	40.244 ✓	-39.730	0	-6.410	0	-131292.127	-69052.541	0.000	0.000000	
TOTAL..	ソツカクスク= 6	720 0 0		90.338	0.000	0 ✓	0.000	0 ✓					
											ハ"イメンセキ=	537.067488	
											1/2=	268.53	+0.00
											メンセキ=	268.53 ✓	

\*\*\* ケツコウ トラハース \*\*\*

チクメイ ... ミヤコタチク トチクカクセイリシキヨウ

NO.	NO.	ANGLE	*	AZIMUTH	LENGTH	DX	*	DY	*	X	Y	NO.
	123BL- 2 ✓									-131285.966	-69168.193	123BL- 2
123BL- 2	123BL-21 ✓			93 2 58 ✓	11.573 ✓	-0.616	0	11.557	1	-131286.582	-69156.635	123BL-21
123BL-21	123BL-22 ✓	180 0 0		93 2 58 ✓	30.091 ✓	-1.601	0	30.048	1	-131288.183	-69126.586	123BL-22
123BL-22	123BL-23 ✓	180 0 0		93 2 58 ✓	22.230 ✓	-1.183	0	22.199	-1	-131289.366	-69104.388	123BL-23
123BL-23	123BL-24 ✓	180 0 0		93 2 58 ✓	11.845 ✓	-0.630	0	11.828	0	-131289.996	-69092.560	123BL-24
123BL-24	123BL-25 ✓	180 0 0		93 2 58 ✓	17.726 ✓	-0.943	0	17.701	-1	-131290.939	-69074.860	123BL-25
123BL-25	123BL-26 ✓	180 0 0		93 2 58 ✓	12.022 ✓	-0.640	0	12.005	0	-131291.579	-69062.855	123BL-26
123BL-26	123BL-15 ✓	180 0 0		93 2 58 ✓	10.329 ✓	-0.549	1	10.314	0	-131292.127	-69052.541	123BL-15
	TOTAL..	1080 0 0			115.816 ✓	-6.162	1 ✓	115.652	0 ✓			
	123BL-15 ✓									-131292.127	-69052.541	123BL-15
123BL-15	123BL-27 ✓			9 9 54 ✓	20.123 ✓	19.866	0	3.205	0	-131272.261	-69049.336	123BL-27
123BL-27	123BL-16 ✓	180 0 0		9 9 54 ✓	20.121 ✓	19.864	0	3.205	0	-131252.397	-69046.131	123BL-16
	TOTAL..	180 0 0			40.244 ✓	39.730	0 ✓	6.410	0 ✓			
	123BL-16 ✓									-131252.397	-69046.131	123BL-16
123BL-16	123BL-28 ✓			273 2 40 ✓	14.532 ✓	0.772	0	-14.511	0	-131251.625	-69060.642	123BL-28
123BL-28	123BL-29 ✓	180 0 0		273 2 40 ✓	11.925 ✓	0.633	0	-11.908	0	-131250.992	-69072.550	123BL-29
123BL-29	123BL-30 ✓	180 0 0		273 2 40 ✓	13.379 ✓	0.711	-1	-13.360	0	-131250.282	-69085.910	123BL-30
123BL-30	123BL-31 ✓	180 0 0		273 2 40 ✓	16.376 ✓	0.870	0	-16.353	-1	-131249.412	-69102.264	123BL-31
123BL-31	123BL-32 ✓	180 0 0		273 2 40 ✓	22.230 ✓	1.181	0	-22.199	1	-131248.231	-69124.462	123BL-32
123BL-32	123BL-33 ✓	180 0 0		273 2 40 ✓	30.091 ✓	1.598	0	-30.049	0	-131246.633	-69154.511	123BL-33
123BL-33	123BL- 7 ✓	180 0 0		273 2 40 ✓	11.856 ✓	0.630	0	-11.839	0	-131246.003	-69166.350	123BL- 7
	TOTAL..	1080 0 0			120.389 ✓	6.395	-1 ✓	-120.219	0 ✓			

\*\*\* ケツコウ トラハース \*\*\*

チクメイ ... ミヤコタチク トチクカクセイリシキヨウ

NO.	NO.	ANGLE	*	AZIMUTH	LENGTH	DX	*	DY	*	X	Y	NO.
	123BL- 8 ✓									-131249.424	-69170.073	123BL- 8
123BL- 8	123BL-34 ✓		183	2 2 ✓	16.392 ✓	-16.369	0	-0.868	0	-131265.793	-69170.941	123BL-34
123BL-34	123BL- 9 ✓	180 0 0	183	2 2 ✓	13.101 ✓	-13.083	0	-0.693	0	-131278.876	-69171.634	123BL- 9
	TOTAL..	180 0 0			29.493 ✓	-29.452	0 ✓	-1.561	0 ✓			
	123BL-34 ✓									-131265.793	-69170.941	123BL-34
123BL-34	123BL-35 ✓		93	2 40 ✓	15.389 ✓	-0.817	0	15.367	0	-131266.610	-69155.574	123BL-35
123BL-35	123BL-36 ✓	180 0 0	93	2 40 ✓	30.091 ✓	-1.598	0	30.049	0	-131268.208	-69125.525	123BL-36
123BL-36	123BL-37 ✓	180 0 0	93	2 40 ✓	22.230 ✓	-1.181	0	22.199	0	-131269.389	-69103.326	123BL-37
123BL-37	123BL-39 ✓	180 0 0	93	2 40 ✓	16.376 ✓	-0.870	0	16.353	0	-131270.259	-69086.973	123BL-39
123BL-39	123BL-41 ✓	180 0 0	93	2 40 ✓	13.379 ✓	-0.711	0	13.360	0	-131270.970	-69073.613	123BL-41
123BL-41	123BL-42 ✓	180 0 0	93	2 40 ✓	11.882 ✓	-0.631	0	11.865	0	-131271.601	-69061.748	123BL-42
123BL-42	123BL-27 ✓	180 0 0	93	2 40 ✓	12.430 ✓	-0.660	0	12.412	0	-131272.261	-69049.336	123BL-27
	TOTAL..	1080 0 0			121.777 ✓	-6.468	0 ✓	121.605	0 ✓			
	123BL-34 ✓									-131265.793	-69170.941	123BL-34
123BL-34	123BL-35 ✓		93	2 40 ✓	15.389 ✓	-0.817	0	15.367	0	-131266.610	-69155.574	123BL-35
123BL-35	123BL-36 ✓	180 0 0	93	2 40 ✓	30.091 ✓	-1.598	0	30.049	0	-131268.208	-69125.525	123BL-36
123BL-36	123BL-37 ✓	180 0 0	93	2 40 ✓	22.230 ✓	-1.181	0	22.199	0	-131269.389	-69103.326	123BL-37
123BL-37	123BL-38 ✓	180 0 0	93	2 40 ✓	11.845 ✓	-0.629	0	11.828	0	-131270.018	-69091.498	123BL-38
123BL-38	123BL-40 ✓	180 0 0	93	2 40 ✓	17.726 ✓	-0.941	-1	17.701	0	-131270.960	-69073.797	123BL-40
123BL-40	123BL-42 ✓	180 0 0	93	2 40 ✓	12.066 ✓	-0.641	0	12.049	0	-131271.601	-69061.748	123BL-42
123BL-42	123BL-27 ✓	180 0 0	93	2 40 ✓	12.430 ✓	-0.660	0	12.412	0	-131272.261	-69049.336	123BL-27
	TOTAL..	1080 0 0			121.777 ✓	-6.467	-1 ✓	121.605	0 ✓			

\*\*\* ケツコウ トラハース \*\*\*

チクメイ ... ミヤコタチク トチクカクセイリシキヨウ

NO.	NO.	ANGLE	*	AZIMUTH	LENGTH	DX	*	DY	*	X	Y	NO.
	123BL-34✓									-131265.793	-69170.941	123BL-34
123BL-34	123BL-35✓			93 2 40 ✓	15.389 ✓	-0.817	0	15.367	0	-131266.610	-69155.574	123BL-35
123BL-35	123BL-36✓	180 0 0		93 2 40 ✓	30.091 ✓	-1.598	0	30.049	0	-131268.208	-69125.525	123BL-36
123BL-36	123BL-37✓	180 0 0		93 2 40 ✓	22.230 ✓	-1.181	0	22.199	0	-131269.389	-69103.326	123BL-37
123BL-37	123BL-38✓	180 0 0		93 2 40 ✓	11.845 ✓	-0.629	0	11.828	0	-131270.018	-69091.498	123BL-38
123BL-38	123BL-39✓	180 0 0		93 2 40 ✓	4.531 ✓	-0.241	0	4.525	0	-131270.259	-69086.973	123BL-39
123BL-39	123BL-40✓	180 0 0		93 2 40 ✓	13.195 ✓	-0.701	0	13.176	0	-131270.960	-69073.797	123BL-40
123BL-40	123BL-41✓	180 0 0		93 2 40 ✓	0.184 ✓	-0.010	0	0.184	0	-131270.970	-69073.613	123BL-41
123BL-41	123BL-42✓	180 0 0		93 2 40 ✓	11.882 ✓	-0.631	0	11.865	0	-131271.601	-69061.748	123BL-42
123BL-42	123BL-27✓	180 0 0		93 2 40 ✓	12.430 ✓	-0.660	0	12.412	0	-131272.261	-69049.336	123BL-27
	TOTAL..	1440 0 0			121.777 ✓	-6.468	0 ✓	121.605	0 ✓			
	123BL-21✓									-131286.582	-69156.635	123BL-21
123BL-21	123BL-35✓			3 2 40 ✓	20.000 ✓	19.972	0	1.062	-1	-131266.610	-69155.574	123BL-35
123BL-35	123BL-33✓	180 0 0		3 2 40 ✓	20.005 ✓	19.977	0	1.062	1	-131246.633	-69154.511	123BL-33
	TOTAL..	180 0 0			40.005 ✓	39.949	0 ✓	2.124	0 ✓			
	123BL-22✓									-131288.183	-69126.586	123BL-22
123BL-22	123BL-36✓			3 2 40 ✓	20.003 ✓	19.975	0	1.062	-1	-131268.208	-69125.525	123BL-36
123BL-36	123BL-32✓	180 0 0		3 2 40 ✓	20.005 ✓	19.977	0	1.062	1	-131248.231	-69124.462	123BL-32
	TOTAL..	180 0 0			40.008 ✓	39.952	0 ✓	2.124	0 ✓			
	123BL-23✓									-131289.366	-69104.388	123BL-23
123BL-23	123BL-37✓			3 2 40 ✓	20.005 ✓	19.977	0	1.062	0	-131269.389	-69103.326	123BL-37

\*\*\* ケツコウ トラハース \*\*\*

チクメイ ... ミヤコタチク トチクカクセイリシキヨウ

NO.	NO.	ANGLE	*	AZIMUTH	LENGTH	DX	*	DY	*	X	Y	NO.
123BL-37	123BL-31 ✓	180 0 0		3 2 40 ✓	20.005 ✓	19.977	0	1.062	0	-131249.412	-69102.264	123BL-31
	TOTAL..	180 0 0			40.010 ✓	39.954	0 ✓	2.124	0 ✓			
	123BL-26 ✓									-131291.579	-69062.855	123BL-26
123BL-26	123BL-42 ✓			3 10 13 ✓	20.009 ✓	19.978	0	1.107	0	-131271.601	-69061.748	123BL-42
123BL-42	123BL-28 ✓	180 0 0		3 10 13 ✓	20.007 ✓	19.976	0	1.106	0	-131251.625	-69060.642	123BL-28
	TOTAL..	180 0 0			40.016 ✓	39.954	0 ✓	2.213	0 ✓			