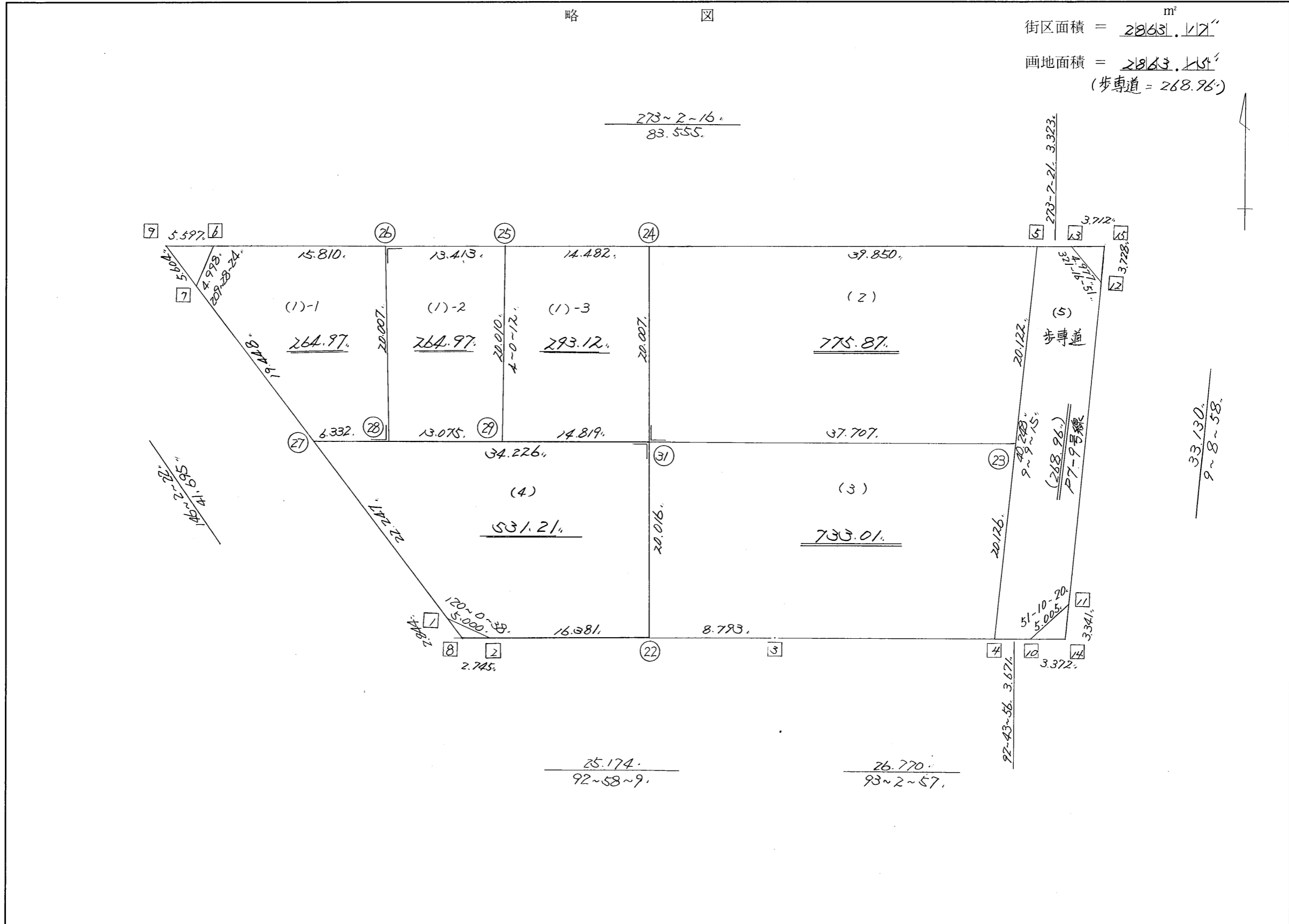


略 図

街区面積 = 2863.127 m²
 画地面積 = 2863.154 m²
 (歩道 = 268.96)



$\frac{33.130}{9 \sim 8 \sim 58}$

街区点番号 $\square 1 \sim \square 15$ 筆界点番号 $\bigcirc 21 \sim \bigcirc 31$ 画地番号 $(\ /) \sim (\ /)$

*** メンセキ ケイサン (ハイオウキヨホウ) ***

チクメイ ... ミヤコタチク トチクカクセイリシキヨウ

セイリ NO... 126BL✓

NO.	NO.	ANGLE	AZIMUTH	LENGTH	DX	*	DY	*	X	Y	DMD	2A	カーブメンセキ
126BL- 7	126BL- 1✓		146 2 22						-131378.261	-69123.480			
126BL- 1	126BL- 2✓	153 58 16	120 0 38✓	5.000✓	-2.501	0	4.330	0	-131380.762	-69119.150	27.622	-69.082622	
126BL- 2	126BL- 3✓	152 57 31	92 58 9✓	25.174✓	-1.304	0	25.140	0	-131382.066	-69094.010	57.092	-74.447968	
126BL- 3	126BL- 4✓	180 4 48	93 2 57✓	26.770✓	-1.424	0	26.732	0	-131383.490	-69067.278	108.964	-155.164736	
126BL- 4	126BL- 5✓	96 6 18	9 9 15✓	40.248✓	39.735	0	6.403	0	-131343.755	-69060.875	142.099	5646.303765	
126BL- 5	126BL- 6✓	83 53 1	273 2 16✓	83.555✓	4.428	0	-83.438	0	-131339.327	-69144.313	65.064	288.103392	
126BL- 6	126BL- 7✓	116 26 8	209 28 24✓	4.998✓	-4.351	0	-2.459	0	-131343.678	-69146.772	-20.833	90.644383	
126BL- 7	126BL- 1✓	116 33 58	146 2 22✓	41.695✓	-34.583	0	23.292	0	-131378.261	-69123.480	0.000	0.000000	
TOTAL..	ツツカクスク= 7	900 0 0		227.440	0.000	0✓	0.000	0✓			ハイメンセキ=	5726.356214	
											1/2=	2863.17	+0.00
											メンセキ=	2863.17✓	

*** メンセキ ケイサン (ハ"イオウキヨホウ) ***

チクメイ ... ミヤコタ"チク トチクカクセイリシ"キ"ヨウ

セイリ NO... 126BL(1)-1✓

NO.	NO.	ANGLE	AZIMUTH	LENGTH	DX	*	DY	*	X	Y	DMD	2A	カ-フ"メンセキ
126BL- 7	126BL-27✓		146 2 22						-131359.809	-69135.908			
126BL-27	126BL-28✓	126 59 54	93 2 16✓	6.332✓	-0.336	1	6.323	0	-131360.144	-69129.585	17.187	-5.757645	
126BL-28	126BL-26✓	90 0 0	3 2 16✓	20.007✓	19.979	0	1.060	0	-131340.165	-69128.525	24.570	490.884030	
126BL-26	126BL- 6✓	90 0 0	273 2 16✓	15.810✓	0.838	0	-15.788	0	-131339.327	-69144.313	9.842	8.247596	
126BL- 6	126BL- 7✓	116 26 8	209 28 24✓	4.998✓	-4.351	0	-2.459	0	-131343.678	-69146.772	-8.405	36.570155	
126BL- 7	126BL-27✓	116 33 58	146 2 22✓	19.448✓	-16.131	0	10.864	0	-131359.809	-69135.908	0.000	0.000000	
TOTAL..	ソツカクスク= 5	540 0 0		66.595	-0.001	1✓	0.000	0✓			ハ"イメンセキ=	529.944136	
											1/2=	264.97	+0.00
											メンセキ=	264.97✓	

セイリ NO... 126BL(1)-2✓

126BL-26	126BL-28✓		183 2 16						-131360.144	-69129.585			
126BL-28	126BL-29✓	90 0 0	93 2 16✓	13.075✓	-0.693	0	13.057	0	-131360.837	-69116.528	11.997	-8.313921	
126BL-29	126BL-25✓	90 57 56	4 0 12✓	20.010✓	19.961	0	1.397	0	-131340.876	-69115.131	26.451	527.988411	
126BL-25	126BL-26✓	89 2 4	273 2 16✓	13.413✓	0.711	0	-13.394	0	-131340.165	-69128.525	14.454	10.276794	
126BL-26	126BL-28✓	90 0 0	183 2 16✓	20.007✓	-19.979	0	-1.060	0	-131360.144	-69129.585	0.000	0.000000	
TOTAL..	ソツカクスク= 4	360 0 0		66.505	0.000	0✓	0.000	0✓			ハ"イメンセキ=	529.951284	
											1/2=	264.97	+0.00
											メンセキ=	264.97✓	

*** メンセキ ケイサン (ハイオウキヨホウ) ***

チクメイ ... ミヤコタチク トチクカクセイリシキヨウ

セリ NO... 126BL(1)-3 ✓

NO.	NO.	ANGLE	AZIMUTH	LENGTH	DX	*	DY	*	X	Y	DMD	2A	カーブメンセキ
126BL-25	126BL-29 ✓		184 0 12						-131360.837	-69116.528			
126BL-29	126BL-31 ✓	89 2 4	93 2 16 ✓	14.819 ✓	-0.785	-1	14.798	0	-131361.623	-69101.730	13.401	-10.533186	
126BL-31	126BL-24 ✓	90 0 0	3 2 16 ✓	20.007 ✓	19.979	1	1.060	1	-131341.643	-69100.669	29.260	584.614800	
126BL-24	126BL-25 ✓	90 0 0	273 2 16 ✓	14.482 ✓	0.767	0	-14.462	0	-131340.876	-69115.131	15.859	12.163853	
126BL-25	126BL-29 ✓	90 57 56	184 0 12 ✓	20.010 ✓	-19.961	0	-1.397	0	-131360.837	-69116.528	0.000	0.000000	
TOTAL..	ソツカクスウ= 4	360 0 0		69.318	0.000	0 ✓	-0.001	1 ✓			ハイメンセキ=	586.245467	
											1/2=	293.12	+0.00
											メンセキ=	293.12 ✓	

セリ NO... 126BL(2) ✓

126BL-24	126BL-31 ✓		183 2 16						-131361.623	-69101.730			
126BL-31	126BL-23 ✓	90 0 0	93 2 16 ✓	37.707 ✓	-1.998	0	37.654	0	-131363.621	-69064.076	36.593	-73.112814	
126BL-23	126BL- 5 ✓	96 6 59	9 9 15 ✓	20.122 ✓	19.866	0	3.201	0	-131343.755	-69060.875	77.448	1538.581968	
126BL- 5	126BL-24 ✓	83 53 1	273 2 16 ✓	39.850 ✓	2.112	0	-39.794	0	-131341.643	-69100.669	40.855	86.285760	
126BL-24	126BL-31 ✓	90 0 0	183 2 16 ✓	20.007 ✓	-19.979	-1	-1.060	-1	-131361.623	-69101.730	0.000	0.000000	
TOTAL..	ソツカクスウ= 4	360 0 0		117.686	0.001	-1 ✓	0.001	-1 ✓			ハイメンセキ=	1551.754914	
											1/2=	775.87	+0.00
											メンセキ=	775.87 ✓	

*** ムセキ ケイサン (ハ"イオウキヨホウ) ***

チクメイ ... ミヤコタ"チク トチクカクセイリシ"キ"ヨウ

セリ NO... 126BL(3) ✓

NO.	NO.	ANGLE	AZIMUTH	LENGTH	DX	*	DY	*	X	Y	DMD	2A	カ-フ"ムセキ
126BL-31	126BL-22 ✓		183 2 16						-131381.611	-69102.791			
126BL-22	126BL- 3 ✓	89 55 53	92 58 9 ✓	8.793 ✓	-0.455	0	8.781	0	-131382.066	-69094.010	7.720	-3.512600	
126BL- 3	126BL- 4 ✓	180 4 48	93 2 57 ✓	26.770 ✓	-1.424	0	26.732	0	-131383.490	-69067.278	43.233	-61.563792	
126BL- 4	126BL-23 ✓	96 6 18	9 9 15 ✓	20.126 ✓	19.870	-1	3.202	0	-131363.621	-69064.076	73.167	1453.755123	
126BL-23	126BL-31 ✓	83 53 1 273	2 16 ✓	37.707 ✓	1.998	0	-37.654	0	-131361.623	-69101.730	38.715	77.352570	
126BL-31	126BL-22 ✓	90 0 0 183	2 16 ✓	20.016 ✓	-19.988	0	-1.061	0	-131381.611	-69102.791	0.000	0.000000	
TOTAL..	ソツカクスク= 5	540 0 0		113.412	0.001	-1 ✓	0.000	0 ✓			ハ"イムセキ=	1466.031301	
											1/2=	733.01	+0.00
											ムセキ=	733.01 ✓	

セリ NO... 126BL(4) ✓

126BL-27	126BL- 1 ✓		146 2 22						-131378.261	-69123.480			
126BL- 1	126BL- 2 ✓	153 58 16 120	0 38 ✓	5.000 ✓	-2.501	0	4.330	0	-131380.762	-69119.150	16.758	-41.911758	
126BL- 2	126BL-22 ✓	152 57 31 92	58 9 ✓	16.381 ✓	-0.849	0	16.359	0	-131381.611	-69102.791	37.447	-31.792503	
126BL-22	126BL-31 ✓	90 4 7 3 2 16 ✓		20.016 ✓	19.988	0	1.061	0	-131361.623	-69101.730	54.867	1096.681596	
126BL-31	126BL-27 ✓	90 0 0 273	2 16 ✓	34.226 ✓	1.814	0	-34.178	0	-131359.809	-69135.908	21.750	39.454500	
126BL-27	126BL- 1 ✓	53 0 6 146	2 22 ✓	22.247 ✓	-18.452	0	12.428	0	-131378.261	-69123.480	0.000	0.000000	
TOTAL..	ソツカクスク= 5	540 0 0		97.870	0.000	0 ✓	0.000	0 ✓			ハ"イムセキ=	1062.431835	
											1/2=	531.21	+0.00
											ムセキ=	531.21 ✓	

*** メンセキ ケイサン (ハイオウキヨホウ) ***

チクメイ ... ミヤコタチク トチクカクセイリシキヨウ

レイ NO... 126BL(5) ✓

NO.	NO.	ANGLE	AZIMUTH	LENGTH	DX	*	DY	*	X	Y	DMD	2A	カーブメンセキ
126BL- 5	126BL- 4 ✓		189 9 15						-131383.490	-69067.278			
126BL- 4	126BL-10 ✓	83 34 41	92 43 56 ✓	3.671 ✓	-0.175	0	3.667	0	-131383.665	-69063.611	-2.736	0.478800	
126BL-10	126BL-11 ✓	138 26 24	51 10 20 ✓	5.005 ✓	3.138	0	3.899	0	-131380.527	-69059.712	4.830	15.156540	
126BL-11	126BL-12 ✓	137 58 38	9 8 58 ✓	33.130 ✓	32.708	0	5.268	0	-131347.819	-69054.444	13.997	457.813876	
126BL-12	126BL-13 ✓	132 7 53	321 16 51 ✓	4.977 ✓	3.883	0	-3.113	0	-131343.936	-69057.557	16.152	62.718216	
126BL-13	126BL- 5 ✓	131 50 30	273 7 21 ✓	3.323 ✓	0.181	0	-3.318	0	-131343.755	-69060.875	9.721	1.759501	
126BL- 5	126BL- 4 ✓	96 1 54	189 9 15 ✓	40.248 ✓	-39.735	0	-6.403	0	-131383.490	-69067.278	0.000	0.000000	
TOTAL..	ソツカクス= 6	720 0 0		90.354	0.000	0 ✓	0.000	0 ✓			ハイメンセキ=	537.926933	
											1/2=	268.96	+0.00
											メンセキ=	268.96 ✓	

*** ケツコウ トラハス ***

チクメイ ... ミヤコタチ トチクカクセイリシキヨウ

NO.	NO.	ANGLE	*	AZIMUTH	LENGTH	DX	*	DY	*	X	Y	NO.
	126BL- 2 ✓									-131380.762	-69119.150	126BL- 2
126BL- 2	126BL-22 ✓			92 58 9 ✓	16.381 ✓	-0.849	0	16.359	0	-131381.611	-69102.791	126BL-22
126BL-22	126BL- 3 ✓	180 0 0		92 58 9 ✓	8.793 ✓	-0.455	0	8.781	0	-131382.066	-69094.010	126BL- 3
	TOTAL..	180 0 0			25.174 ✓	-1.304	0 ✓	25.140	0 ✓			
	126BL- 5 ✓									-131343.755	-69060.875	126BL- 5
126BL- 5	126BL-24 ✓			273 2 16 ✓	39.850 ✓	2.112	0	-39.794	0	-131341.643	-69100.669	126BL-24
126BL-24	126BL-25 ✓	180 0 0		273 2 16 ✓	14.482 ✓	0.767	0	-14.462	0	-131340.876	-69115.131	126BL-25
126BL-25	126BL-26 ✓	180 0 0		273 2 16 ✓	13.413 ✓	0.711	0	-13.394	0	-131340.165	-69128.525	126BL-26
126BL-26	126BL- 6 ✓	180 0 0		273 2 16 ✓	15.810 ✓	0.838	0	-15.788	0	-131339.327	-69144.313	126BL- 6
	TOTAL..	540 0 0			83.555 ✓	4.428	0 ✓	-83.438	0 ✓			
	126BL- 7 ✓									-131343.678	-69146.772	126BL- 7
126BL- 7	126BL-27 ✓			146 2 22 ✓	19.448 ✓	-16.131	0	10.864	0	-131359.809	-69135.908	126BL-27
126BL-27	126BL- 1 ✓	180 0 0		146 2 22 ✓	22.247 ✓	-18.452	0	12.428	0	-131378.261	-69123.480	126BL- 1
	TOTAL..	180 0 0			41.695 ✓	-34.583	0 ✓	23.292	0 ✓			
	126BL-27 ✓									-131359.809	-69135.908	126BL-27
126BL-27	126BL-28 ✓			93 2 16 ✓	6.332 ✓	-0.336	1	6.323	0	-131360.144	-69129.585	126BL-28
126BL-28	126BL-29 ✓	180 0 0		93 2 16 ✓	13.075 ✓	-0.693	0	13.057	0	-131360.837	-69116.528	126BL-29
126BL-29	126BL-31 ✓	180 0 0		93 2 16 ✓	14.819 ✓	-0.785	-1	14.798	0	-131361.623	-69101.730	126BL-31
126BL-31	126BL-23 ✓	180 0 0		93 2 16 ✓	37.707 ✓	-1.998	0	37.654	0	-131363.621	-69064.076	126BL-23
	TOTAL..	540 0 0			71.933 ✓	-3.812	0 ✓	71.832	0 ✓			

*** ケツコウ トラハ入 ***

チクメイ ... ミヤコタチク トチクカクセイリシキヨウ

NO.	NO.	ANGLE	*	AZIMUTH	LENGTH	DX	*	DY	*	X	Y	NO.
	126BL-27✓									-131359.809	-69135.908	126BL-27
126BL-27	126BL-31✓			93 2 16✓	34.226✓	-1.814	0	34.178	0	-131361.623	-69101.730	126BL-31
126BL-31	126BL-23✓	180 0 0		93 2 16✓	37.707✓	-1.998	0	37.654	0	-131363.621	-69064.076	126BL-23
	TOTAL..	180 0 0			71.933✓	-3.812	0✓	71.832	0✓			
	126BL-22✓									-131381.611	-69102.791	126BL-22
126BL-22	126BL-31✓			3 2 16✓	20.016✓	19.988	0	1.061	0	-131361.623	-69101.730	126BL-31
126BL-31	126BL-24✓	180 0 0		3 2 16✓	20.007✓	19.979	1	1.060	1	-131341.643	-69100.669	126BL-24
	TOTAL..	180 0 0			40.023✓	39.967	1✓	2.121	1✓			