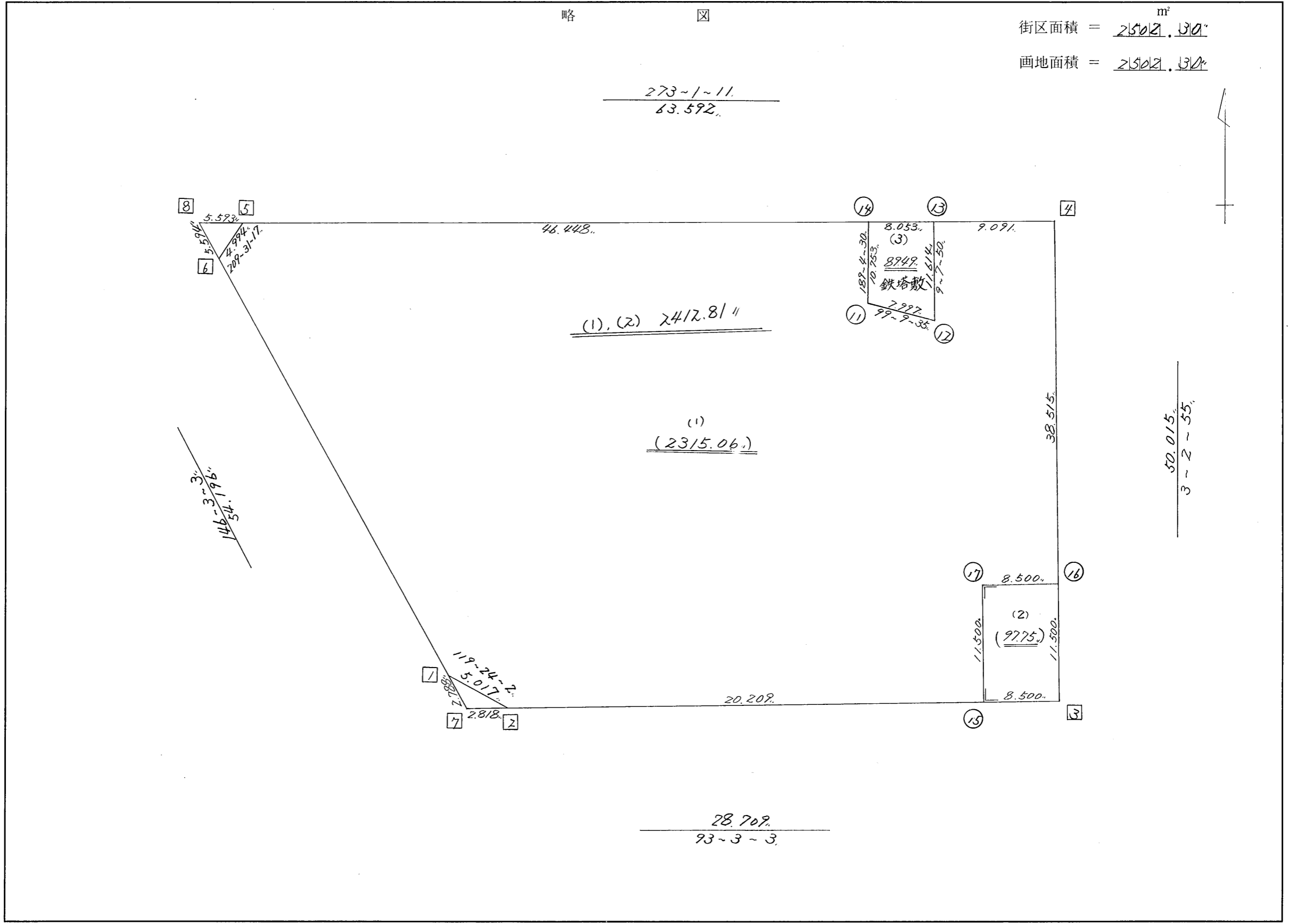


略 図

街区面積 =  $2502.30$  m<sup>2</sup>  
 画地面積 =  $2502.30$



街区点番号 1 ~ 8 筆界点番号 11 ~ 17 画地番号 ( 1 ) ~ ( 3 )

\*\*\* メンセキ ケイサン (ハイオウキヨホウ) \*\*\*

チクメイ ... ミヤコタチク トチクカクセイツシキヨウ

NO.	NO.	ANGLE	AZIMUTH	LENGTH	DX	*	DY	*	X	Y.	DMD	2A	カ-クメンセキ
129BL- 6	129BL- 1 ✓		146 3 3						-131436.421	-69084.319			
129BL- 1	129BL- 2 ✓	153 20 59	119 24 2 ✓	5.017 ✓	-2.463	0	4.371	0	-131438.884	-69079.948	34.637	-85.310931	
129BL- 2	129BL- 3 ✓	153 39 1	93 3 3 ✓	28.709 ✓	-1.528	0	28.668	0	-131440.412	-69051.280	67.676	-103.408928	
129BL- 3	129BL- 4 ✓	89 59 52	3 2 55 ✓	50.015 ✓	49.944	0	2.660	0	-131390.468	-69048.620	99.004	4944.655776	
129BL- 4	129BL- 5 ✓	89 58 16	273 1 11 ✓	63.592 ✓	3.350	0	-63.504	0	-131387.118	-69112.124	38.160	127.836000	
129BL- 5	129BL- 6 ✓	116 30 6	209 31 17 ✓	4.994 ✓	-4.346	0	-2.461	0	-131391.464	-69114.585	-27.805	120.840530	
129BL- 6	129BL- 1 ✓	116 31 46	146 3 3 ✓	54.196 ✓	-44.957	0	30.266	0	-131436.421	-69084.319	0.000	0.000000	
TOTAL...	ソツカクスク= 6	720 0 0		206.523	0.000	0 ✓	0.000	0 ✓			ハイメンセキ=	5004.612447	
											1/2=	2502.30	+0.00
											メンセキ=	2502.30 ✓	

\*\*\* メンセキ ケイサン (ハイイウキヨホウ) \*\*\*

チクメイ ... ミヤコタチク トチクカクセイリシキヨウ

セリ NO... 129BL(1,2) //

NO.	NO.	ANGLE	AZIMUTH	LENGTH	DX	*	DY	*	X	Y	DMD	2A	カ-フイメンセキ
129BL- 6	129BL- 1✓		146 3 3						-131436.421	-69084.319			
129BL- 1	129BL- 2✓	153 20 59	119 24 2✓	5.017✓	-2.463	0	4.371	0	-131438.884	-69079.948	34.637	-85.310931	
129BL- 2	129BL- 3✓	153 39 1	93 3 3✓	28.709✓	-1.528	0	28.668	0	-131440.412	-69051.280	67.676	-103.408928	
129BL- 3	129BL- 4✓	89 59 52	3 2 55✓	50.015✓	49.944	0	2.660	0	-131390.468	-69048.620	99.004	4944.655776	
129BL- 4	129BL-13✓	89 58 16	273 1 11✓	9.091✓	0.479	0	-9.078	0	-131389.989	-69057.698	92.586	44.348694	
129BL-13	129BL-12✓	96 6 39	189 7 50✓	11.614✓	-11.467	0	-1.843	0	-131401.456	-69059.541	81.665	-936.452555	
129BL-12	129BL-11✓	270 1 45	279 9 35✓	7.997✓	1.273	0	-7.895	0	-131400.183	-69067.436	71.927	91.563071	
129BL-11	129BL-14✓	269 54 55	9 4 30✓	10.753✓	10.618	0	1.696	0	-131389.565	-69065.740	65.728	697.899904	
129BL-14	129BL- 5✓	83 56 41	273 1 11✓	46.448✓	2.447	0	-46.384	0	-131387.118	-69112.124	21.040	51.484880	
129BL- 5	129BL- 6✓	116 30 6	209 31 17✓	4.994✓	-4.346	0	-2.461	0	-131391.464	-69114.585	-27.805	120.840530	
129BL- 6	129BL- 1✓	116 31 46	146 3 3✓	54.196✓	-44.957	0	30.266	0	-131436.421	-69084.319	0.000	0.000000	
TOTAL..	ソツカクスウ= 10	1440	0 0	228.834	0.000	0✓	0.000	0✓			ハイメンセキ=	4825.620441	
											1/2=	2412.81	+0.00
											メンセキ=	2412.81✓	

\*\*\* メンセキ ケイサン (ハ"イオウキヨホウ) \*\*\*

チクメイ... ミヤコタ"チク トチクカクセイリヨ"キ"ヨウ

セリ NO... 129BL(3) ✓

NO.	NO.	ANGLE	AZIMUTH	LENGTH	DX	*	DY	*	X	Y	DMD	2A	カ-フ"メンセキ
129BL-14	129BL-11 ✓		189 4 30						-131400.183	-69067.436			
129BL-11	129BL-12 ✓	90 5 5	99 9 35 ✓	7.997 ✓	-1.273	0	7.895	0	-131401.456	-69059.541	6.199	-7.891327	
129BL-12	129BL-13 ✓	89 58 15	9 7 50 ✓	11.614 ✓	11.467	0	1.843	0	-131389.989	-69057.698	15.937	182.749579	
129BL-13	129BL-14 ✓	83 53 21	273 1 11 ✓	8.053 ✓	0.424	0	-8.042	0	-131389.565	-69065.740	9.738	4.128912	
129BL-14	129BL-11 ✓	96 3 19	189 4 30 ✓	10.753 ✓	-10.618	0	-1.696	0	-131400.183	-69067.436	0.000	0.000000	
TOTAL..	ソツカクスウ= 4	360 0 0		38.417	0.000	0 ✓	0.000	0 ✓			ハ"イメンセキ=	178.987164	
											1/2=	89.49	+0.00
											メンセキ=	89.49 ✓	

\*\*\* メンセキ ケイサン (ハ"イオウキヨホウ) \*\*\*

チクメイ ... ミヤコタチク トチクカクセイリヨ"キ"ヨウ

セイリ NO... 129BL(1) ≡

NO.	NO.	ANGLE	AZIMUTH	LENGTH	DX	*	DY	*	X	Y	DMD	2A	カーブ"メンセキ
129BL- 6	129BL- 1✓		146 3 3						-131436.421	-69084.319			
129BL- 1	129BL- 2✓	153 20 59	119 24 2 ✓	5.017✓	-2.463	0	4.371	0	-131438.884	-69079.948	34.637	-85.310931	
129BL- 2	129BL-15✓	153 39 1	93 3 3 ✓	20.209✓	-1.076	0	20.180	0	-131439.960	-69059.768	59.188	-63.686288	
129BL-15	129BL-17✓	90 0 0	3 3 3 ✓	11.500✓	11.484	0	0.612	0	-131428.476	-69059.156	79.980	918.490320	
129BL-17	129BL-16✓	270 0 0	93 3 3 ✓	8.500✓	-0.452	0	8.488	0	-131428.928	-69050.668	89.080	-40.264160	
129BL-16	129BL- 4✓	89 59 52	3 2 55 ✓	38.515✓	38.460	0	2.048	0	-131390.468	-69048.620	99.616	3831.231360	
129BL- 4	129BL-13✓	89 58 16	273 1 11 ✓	9.091✓	0.479	0	-9.078	0	-131389.989	-69057.698	92.586	44.348694	
129BL-13	129BL-12✓	96 6 39	189 7 50 ✓	11.614✓	-11.467	0	-1.843	0	-131401.456	-69059.541	81.665	-936.452555	
129BL-12	129BL-11✓	270 1 45	279 9 35 ✓	7.997✓	1.273	0	-7.895	0	-131400.183	-69067.436	71.927	91.563071	
129BL-11	129BL-14✓	269 54 55	9 4 30 ✓	10.753✓	10.618	0	1.696	0	-131389.565	-69065.740	65.728	697.899904	
129BL-14	129BL- 5✓	83 56 41	273 1 11 ✓	46.448✓	2.447	0	-46.384	0	-131387.118	-69112.124	21.040	51.484880	
129BL- 5	129BL- 6✓	116 30 6	209 31 17 ✓	4.994✓	-4.346	0	-2.461	0	-131391.464	-69114.585	-27.805	120.840530	
129BL- 6	129BL- 1✓	116 31 46	146 3 3 ✓	54.196✓	-44.957	0	30.266	0	-131436.421	-69084.319	0.000	0.000000	
TOTAL..	ソツカクスク= 12	1800 0 0		228.834	0.000	0 ✓	0.000	0 ✓			ハ"イメンセキ=	4630.144825	
											1/2=	2315.07	+0.00
											メンセキ=	2315.07 ✓	
												0.01	
												2315.061	

\*\*\* メンセキ ケイサツ (ハ"イオウキヨホウ) \*\*\*

チクメイ ... ミヤコタ"チク トチクカクセイリシ"キ"ヨウ

ヒリ NO. ... 129BL(2) ✓

NO.	NO.	ANGLE	AZIMUTH	LENGTH	DX	*	DY	*	X	Y	DMD	2A	カ-フ"メンセキ
129BL-17	129BL-15 ✓		183 3 3						-131439.960	-69059.768			
129BL-15	129BL- 3 ✓	90 0 0	93 3 3 ✓	8.500 ✓	-0.452	0	8.488	0	-131440.412	-69051.280	7.876	-3.559952	
129BL- 3	129BL-16 ✓	89 59 52	3 2 55 ✓	11.500 ✓	11.484	0	0.612	0	-131428.928	-69050.668	16.976	194.952384	
129BL-16	129BL-17 ✓	90 0 8 273	3 3 ✓	8.500 ✓	0.452	0	-8.488	0	-131428.476	-69059.156	9.100	4.113200	
129BL-17	129BL-15 ✓	90 0 0	183 3 3 ✓	11.500 ✓	-11.484	0	-0.612	0	-131439.960	-69059.768	0.000	0.000000	
TOTAL..	ソツカクスウ= 4	360 0 0		40.000	0.000	0 ✓	0.000	0 ✓			ハ"イメンセキ=	195.505632	
											1/2=	97.75	+0.00
											メンセキ=	97.75 ✓	

\*\*\* ケツコウ トラハース \*\*\*

チクメイ ... ミヤコタチク トチクカクセイリシキヨウ

NO.	NO.	ANGLE *	AZIMUTH	LENGTH	DX	* DY	* X	Y	NO.
	129BL- 2 ✓						-131438.884	-69079.948	129BL- 2
129BL- 2	129BL-15 ✓		93 3 3 ✓	20.209 ✓	-1.076	0 20.180	0 -131439.960	-69059.768	129BL-15
129BL-15	129BL- 3 ✓	180 0 0	93 3 3 ✓	8.500 ✓	-0.452	0 8.488	0 -131440.412	-69051.280	129BL- 3
	TOTAL..	180 0 0		28.709 ✓	-1.528	0 ✓ 28.668	0 ✓		
	129BL- 3 ✓						-131440.412	-69051.280	129BL- 3
129BL- 3	129BL-16 ✓		3 2 55 ✓	11.500 ✓	11.484	0 0.612	0 -131428.928	-69050.668	129BL-16
129BL-16	129BL- 4 ✓	180 0 0	3 2 55 ✓	38.515 ✓	38.460	0 2.048	0 -131390.468	-69048.620	129BL- 4
	TOTAL..	180 0 0		50.015 ✓	49.944	0 ✓ 2.660	0 ✓		
	129BL- 4 ✓						-131390.468	-69048.620	129BL- 4
129BL- 4	129BL-13 ✓		273 1 11 ✓	9.091 ✓	0.479	0 -9.078	0 -131389.989	-69057.698	129BL-13
129BL-13	129BL-14 ✓	180 0 0	273 1 11 ✓	8.053 ✓	0.424	0 -8.042	0 -131389.565	-69065.740	129BL-14
129BL-14	129BL- 5 ✓	180 0 0	273 1 11 ✓	46.448 ✓	2.447	0 -46.384	0 -131387.118	-69112.124	129BL- 5
	TOTAL..	360 0 0		63.592 ✓	3.350	0 ✓ -63.504	0 ✓		