

略 図

街区面積 = $\frac{21174.17}{17}$ m²
 画地面積 = $\frac{21174.17}{6}$

$\frac{236-1-55}{24.987}$

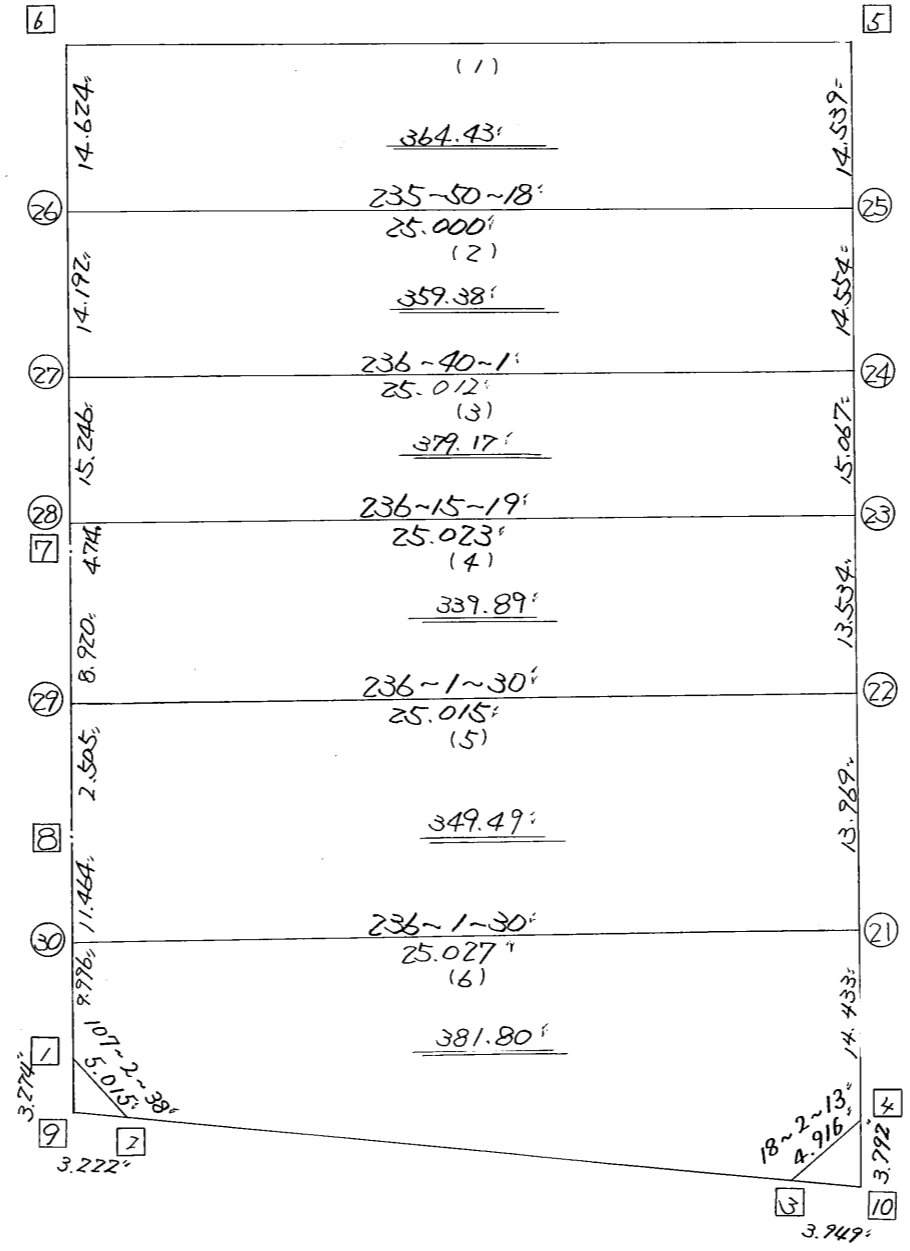
$\frac{146-4-16}{48.776}$

$\frac{145-56-44}{11.425}$

$\frac{146-7-3}{21.460}$

$\frac{86.096}{326-1-30}$

$\frac{18.365}{67-12-58}$



*** メンセキ ケイザン (ハイオウキヨホウ) ***

チクメイ ... ミヤコタチク トチクカクセイリシキヨウ

セリ NO... 131BL

NO.	NO.	ANGLE	AZIMUTH	LENGTH	DX	*	DY	*	X	Y	DMD	2A	カ-フメンセキ
131BL- 8	131BL- 1		146 7 3						-131510.780	-69136.711			
131BL- 1	131BL- 2	140 55 35	107 2 38	5.015	-1.470	0	4.795	0	-131512.250	-69131.916	16.759	-24.635730	
131BL- 2	131BL- 3	140 10 20	67 12 58	18.365	7.112	0	16.932	0	-131505.138	-69114.984	38.486	273.712432	
131BL- 3	131BL- 4	130 49 15	18 2 13	4.916	4.674	0	1.522	0	-131500.464	-69113.462	56.940	266.137560	
131BL- 4	131BL- 5	127 59 17	326 1 30	86.096	71.398	0	-48.113	0	-131429.066	-69161.575	10.349	738.897902	
131BL- 5	131BL- 6	90 0 25	236 1 55	24.987	-13.961	0	-20.723	0	-131443.027	-69182.298	-58.487	816.537007	
131BL- 6	131BL- 7	90 2 21	146 4 16	48.776	-40.471	0	27.225	0	-131483.498	-69155.073	-51.985	2103.884935	
131BL- 7	131BL- 8	179 52 28	145 56 44	11.425	-9.466	0	6.398	0	-131492.964	-69148.675	-18.362	173.814692	
131BL- 8	131BL- 1	180 10 19	146 7 3	21.460	-17.816	0	11.964	0	-131510.780	-69136.711	0.000	0.000000	
TOTAL..	ソツカスウ= 8	1080	0 0	221.040	0.000	0	0.000	0			ハイメンセキ=	4348.348798	
											1/2=	2174.17	+0.00
											メンセキ=	2174.17	

*** メンセキ ケイザン (ハ"イオウキヨホウ) ***

チクメイ ... ミヤコタ"チク トチクカクセイリシ"キ"ヨウ

セリ NO... 131BL(1)✓

NO.	NO.	ANGLE	AZIMUTH	LENGTH	DX	*	DY	*	X	Y	DMD	2A	カ-フ"メンセキ
131BL- 6	131BL-26✓		146 4 16						-131455.161	-69174.136			
131BL-26	131BL-25✓	89 46 2	55 50 18✓	25.000✓	14.038	0	20.686	0	-131441.123	-69153.450	28.848	404.968224	
131BL-25	131BL- 5✓	90 11 12	326 1 30✓	14.539✓	12.057	0	-8.125	0	-131429.066	-69161.575	41.409	499.268313	
131BL- 5	131BL- 6✓	90 0 25	236 1 55✓	24.987✓	-13.961	0	-20.723	0	-131443.027	-69182.298	12.561	-175.364121	
131BL- 6	131BL-26✓	90 2 21	146 4 16✓	14.624✓	-12.134	0	8.163	-1	-131455.161	-69174.136	0.000	0.000000	
TOTAL..	ソツカクスク= 4	360 0 0		79.150	0.000	0 ✓	0.001	-1✓			ハ"イメンセキ=	728.872416	
											1/2=	364.43	+0.00
											メンセキ=	364.43✓	

セリ NO... 131BL(2)✓

131BL-26	131BL-27✓		146 4 16						-131466.936	-69166.214			
131BL-27	131BL-24✓	90 35 45	56 40 1✓	25.012✓	13.744	0	20.897	0	-131453.192	-69145.317	28.819	396.088336	
131BL-24	131BL-25✓	89 21 29	326 1 30✓	14.554✓	12.069	0	-8.133	0	-131441.123	-69153.450	41.583	501.865227	
131BL-25	131BL-26✓	89 48 48	235 50 18✓	25.000✓	-14.038	0	-20.686	0	-131455.161	-69174.136	12.764	-179.181032	
131BL-26	131BL-27✓	90 13 58	146 4 16✓	14.192✓	-11.776	1	7.921	1	-131466.936	-69166.214	0.000	0.000000	
TOTAL..	ソツカクスク= 4	360 0 0		78.758	-0.001	1✓	-0.001	1✓			ハ"イメンセキ=	718.772531	
											1/2=	359.38	+0.00
											メンセキ=	359.38✓	

*** メンセキ カイサン (ハイオウキヨホウ) ***

チクメイ ... ミヤコタチク トチクカクセイリシキヨウ

セリ NO... 131BL(3)✓

NO.	NO.	ANGLE	AZIMUTH	LENGTH	DX	*	DY	*	X	Y	DMD	2A	カ-フメンセキ
131BL-27	131BL-28✓		146 4 16						-131479.587	-69157.704			
131BL-28	131BL-23✓	90 11 3	56 15 19	25.023✓	13.900	0	20.807	0	-131465.687	-69136.897	29.317	407.506300	
131BL-23	131BL-24✓	89 46 11	326 1 30	15.067✓	12.495	0	-8.420	0	-131453.192	-69145.317	41.704	521.091480	
131BL-24	131BL-27✓	90 38 31	236 40 1	25.012✓	-13.744	0	-20.897	0	-131466.936	-69166.214	12.387	-170.246928	
131BL-27	131BL-28✓	89 24 15	146 4 16	15.246✓	-12.650	-1	8.510	0	-131479.587	-69157.704	0.000	0.000000	
TOTAL..	ソツカクスウ= 4	360	0 0	80.348	0.001	-1✓	0.000	0✓			ハイメンセキ=	758.350852	
											1/2=	379.17	+0.00
											メンセキ=	379.17✓	

セリ NO... 131BL(4)✓

131BL- 7	131BL-29✓		145 56 44						-131490.889	-69150.078			
131BL-29	131BL-22✓	90 4 46	56 1 30✓	25.015✓	13.979	0	20.744	0	-131476.910	-69129.334	25.739	359.805481	
131BL-22	131BL-23✓	90 0 0	326 1 30✓	13.534✓	11.223	0	-7.563	0	-131465.687	-69136.897	38.920	436.799160	
131BL-23	131BL-28✓	90 13 49	236 15 19✓	25.023✓	-13.900	0	-20.807	0	-131479.587	-69157.704	10.550	-146.645000	
131BL-28	131BL- 7✓	89 48 57	146 4 16✓	4.714✓	-3.911	0	2.631	0	-131483.498	-69155.073	-7.626	29.825286	
131BL- 7	131BL-29✓	179 52 28	145 56 44✓	8.920✓	-7.390	-1	4.995	0	-131490.889	-69150.078	0.000	0.000000	
TOTAL..	ソツカクスウ= 5	540	0 0	77.206	0.001	-1✓	0.000	0✓			ハイメンセキ=	679.784927	
											1/2=	339.89	+0.00
											メンセキ=	339.89✓	

*** メンセキ ケイサン (ハイオウキヨホウ) ***

チクメイ ... ミヤコタチク トチクカクセイリシキヨ

セリ NO... 131BL(5)✓

NO.	NO.	ANGLE	AZIMUTH	LENGTH	DX	*	DY	*	X	Y	DMD	2A	カーブメンセキ
131BL- 8	131BL-30✓		146 7 3						-131502.482	-69142.284			
131BL-30	131BL-21✓	89 54 27	56 1 30✓	25.027✓	13.986	1	20.754	2	-131488.495	-69121.528	27.147	379.705089	
131BL-21	131BL-22✓	90 0 0	326 1 30✓	13.969✓	11.584	1	-7.806	0	-131476.910	-69129.334	40.097	464.523745	
131BL-22	131BL-29✓	90 0 0	236 1 30✓	25.015✓	-13.979	0	-20.744	0	-131490.889	-69150.078	11.547	-161.415513	
131BL-29	131BL- 8✓	89 55 14	145 56 44✓	2.505✓	-2.075	0	1.403	0	-131492.964	-69148.675	-7.794	16.172550	
131BL- 8	131BL-30✓	180 10 19	146 7 3✓	11.464✓	-9.517	-1	6.391	0	-131502.482	-69142.284	0.000	0.000000	
TOTAL..	ソツカクスウ= 5	540 0 0		77.980	-0.001	1✓	-0.002	2✓			ハイメンセキ=	698.985871	
											1/2=	349.49	+0.00
											メンセキ=	349.49✓	

セリ NO... 131BL(6)✓

131BL-30	131BL- 1✓		146 7 3						-131510.780	-69136.711			
131BL- 1	131BL- 2✓	140 55 35	107 2 38✓	5.015✓	-1.470	0	4.795	0	-131512.250	-69131.916	10.368	-15.240960	
131BL- 2	131BL- 3✓	140 10 20	67 12 58✓	18.365✓	7.112	0	16.932	0	-131505.138	-69114.984	32.095	228.259640	
131BL- 3	131BL- 4✓	130 49 15	18 2 13✓	4.916✓	4.674	0	1.522	0	-131500.464	-69113.462	50.549	236.266026	
131BL- 4	131BL-21✓	127 59 17	326 1 30✓	14.433✓	11.969	0	-8.066	0	-131488.495	-69121.528	44.005	526.695845	
131BL-21	131BL-30✓	90 0 0	236 1 30✓	25.027✓	-13.986	-1	-20.754	-2	-131502.482	-69142.284	15.183	-212.364621	
131BL-30	131BL- 1✓	90 5 33	146 7 3✓	9.996✓	-8.299	1	5.573	0	-131510.780	-69136.711	0.000	0.000000	
TOTAL..	ソツカクスウ= 6	720 0 0		77.752	0.000	0✓	0.002	-2✓			ハイメンセキ=	763.615930	
											1/2=	381.80	+0.00
											メンセキ=	381.80✓	

*** ケツコウ トラハ"-入 ***

チクメイ ... ミヤコタチク トチクカクセイリヨ"キ"ヨウ

NO.	NO.	ANGLE	*	AZIMUTH	LENGTH	DX	*	DY	*	X	Y	NO.
	131BL- 4 ✓									-131500.464	-69113.462	131BL- 4
131BL- 4	131BL-21 ✓		326	1 30 ✓	14.433 ✓	11.969	0	-8.066	0	-131488.495	-69121.528	131BL-21
131BL-21	131BL-22 ✓	180 0 0	326	1 30 ✓	13.969 ✓	11.584	1	-7.806	0	-131476.910	-69129.334	131BL-22
131BL-22	131BL-23 ✓	180 0 0	326	1 30 ✓	13.534 ✓	11.223	0	-7.563	0	-131465.687	-69136.897	131BL-23
131BL-23	131BL-24 ✓	180 0 0	326	1 30 ✓	15.067 ✓	12.495	0	-8.420	0	-131453.192	-69145.317	131BL-24
131BL-24	131BL-25 ✓	180 0 0	326	1 30 ✓	14.554 ✓	12.069	0	-8.133	0	-131441.123	-69153.450	131BL-25
131BL-25	131BL- 5 ✓	180 0 0	326	1 30 ✓	14.539 ✓	12.057	0	-8.125	0	-131429.066	-69161.575	131BL- 5
	TOTAL..	900 0 0			86.096 ✓	71.397	1 ✓	-48.113	0 ✓			
	131BL- 6 ✓									-131443.027	-69182.298	131BL- 6
131BL- 6	131BL-26 ✓		146	4 16 ✓	14.624 ✓	-12.134	0	8.163	-1	-131455.161	-69174.136	131BL-26
131BL-26	131BL-27 ✓	180 0 0	146	4 16 ✓	14.192 ✓	-11.776	1	7.921	1	-131466.936	-69166.214	131BL-27
131BL-27	131BL-28 ✓	180 0 0	146	4 16 ✓	15.246 ✓	-12.650	-1	8.510	0	-131479.587	-69157.704	131BL-28
131BL-28	131BL- 7 ✓	180 0 0	146	4 16 ✓	4.714 ✓	-3.911	0	2.631	0	-131483.498	-69155.073	131BL- 7
	TOTAL..	540 0 0			48.776 ✓	-40.471	0 ✓	27.225	0 ✓			
	131BL- 7 ✓									-131483.498	-69155.073	131BL- 7
131BL- 7	131BL-29 ✓		145	56 44 ✓	8.920 ✓	-7.390	-1	4.995	0	-131490.889	-69150.078	131BL-29
131BL-29	131BL- 8 ✓	180 0 0	145	56 44 ✓	2.505 ✓	-2.075	0	1.403	0	-131492.964	-69148.675	131BL- 8
	TOTAL..	180 0 0			11.425 ✓	-9.465	-1 ✓	6.398	0 ✓			
	131BL- 8 ✓									-131492.964	-69148.675	131BL- 8
131BL- 8	131BL-30 ✓		146	7 3 ✓	11.464 ✓	-9.517	-1	6.391	0	-131502.482	-69142.284	131BL-30
131BL-30	131BL- 1 ✓	180 0 0	146	7 3 ✓	9.996 ✓	-8.299	1	5.573	0	-131510.780	-69136.711	131BL- 1
	TOTAL..	180 0 0			21.460 ✓	-17.816	0 ✓	11.964	0 ✓			