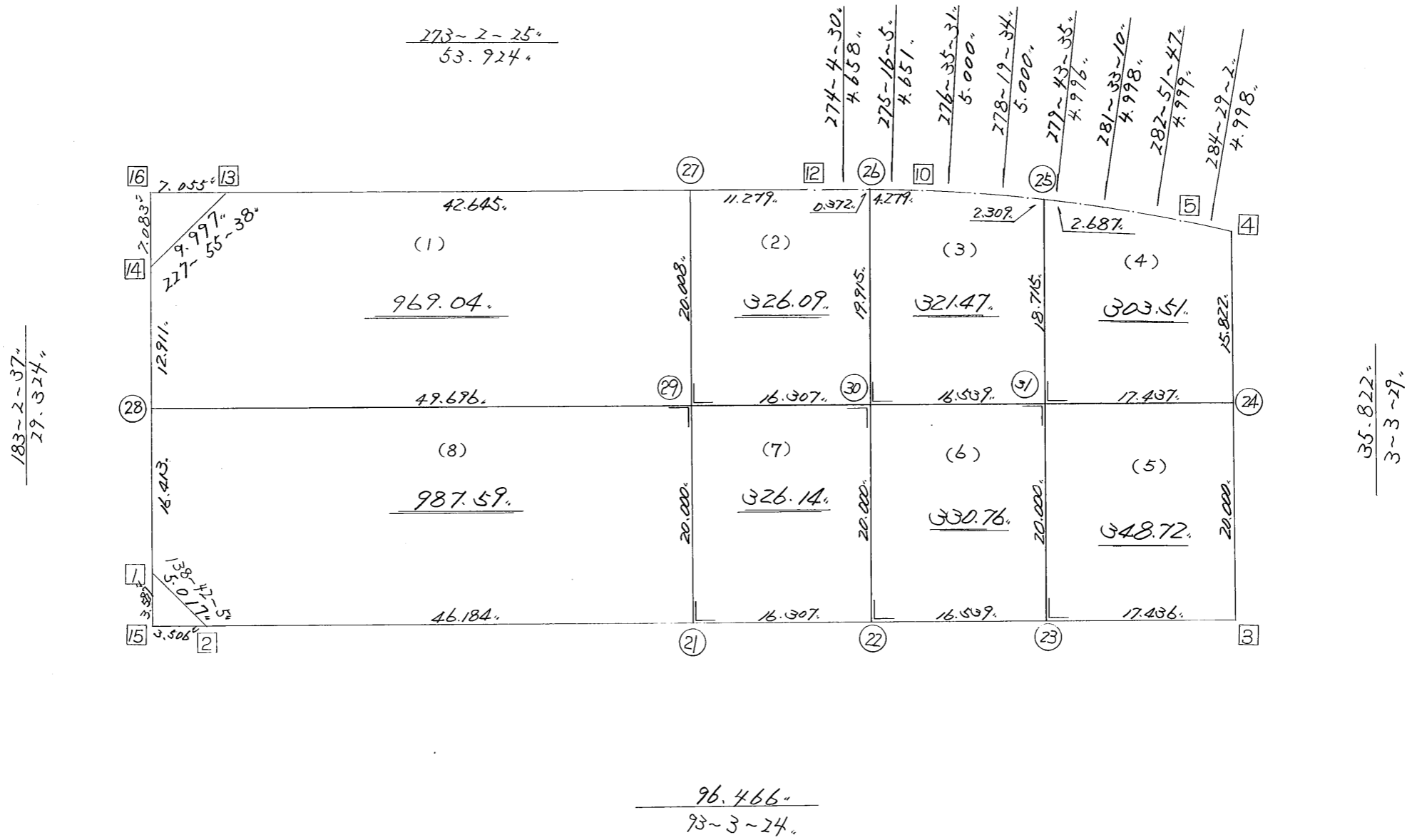


略 図

街区面積 = $\frac{3913.35}{m^2}$
 画地面積 = $\frac{3913.35}{m^2}$



街区点番号 $\square 1 \sim \square 16$ 、筆界点番号 $\bigcirc 21 \sim \bigcirc 31$ 、画地番号 (/) ~ (8)、

*** メンセキ ケイサク (ハ"イオウキヨホウ) ***

チクメイ ... ミヤコタ"チク トチクカクセイリシ"キ"ヨウ

セイリ NO... 133BL✓

NO.	NO.	ANGLE	AZIMUTH	LENGTH	DX	*	DY	*	X	Y	DMD	2A	カ-フ"メンセキ
133BL-14	133BL- 1✓		183 2 37						-131360.920	-69381.238			
133BL- 1	133BL- 2✓	135 39 28	138 42 5✓	5.017✓	-3.769	0	3.311	0	-131364.689	-69377.927	1.754	-6.610826	
133BL- 2	133BL- 3✓	134 21 19	93 3 24✓	96.466✓	-5.144	0	96.329	0	-131369.833	-69281.598	101.394	-521.570736	
133BL- 3	133BL- 4✓	90 0 5	3 3 29✓	35.822✓	35.771	0	1.911	0	-131334.062	-69279.687	199.634	7141.107814	
133BL- 4	133BL- 5✓	101 25 33	284 29 2✓	4.998✓	1.250	0	-4.839	0	-131332.812	-69284.526	196.706	245.882500	
133BL- 5	133BL- 6✓	178 22 45	282 51 47✓	4.999✓	1.113	0	-4.874	0	-131331.699	-69289.400	186.993	208.123209	
133BL- 6	133BL- 7✓	178 41 23	281 33 10✓	4.998✓	1.001	0	-4.897	0	-131330.698	-69294.297	177.222	177.399222	
133BL- 7	133BL- 8✓	178 10 25	279 43 35✓	4.996✓	0.844	0	-4.924	0	-131329.854	-69299.221	167.401	141.286444	
133BL- 8	133BL- 9✓	178 35 59	278 19 34✓	5.000✓	0.724	0	-4.947	0	-131329.130	-69304.168	157.530	114.051720	
133BL- 9	133BL-10✓	178 15 57	276 35 31✓	5.000✓	0.574	0	-4.967	0	-131328.556	-69309.135	147.616	84.731584	
133BL-10	133BL-11✓	178 40 34	275 16 5✓	4.651✓	0.427	0	-4.631	0	-131328.129	-69313.766	138.018	58.933686	
133BL-11	133BL-12✓	178 48 25	274 4 30✓	4.658✓	0.331	0	-4.646	0	-131327.798	-69318.412	128.741	42.613271	
133BL-12	133BL-13✓	178 57 55	273 2 25✓	53.924✓	2.860	0	-53.848	0	-131324.938	-69372.260	70.247	200.906420	
133BL-13	133BL-14✓	134 53 13	227 55 38✓	9.997✓	-6.699	0	-7.421	0	-131331.637	-69379.681	8.978	-60.143622	
133BL-14	133BL- 1✓	135 6 59	183 2 37✓	29.324✓	-29.283	0	-1.557	0	-131360.920	-69381.238	0.000	0.000000	
TOTAL..	ソツカクス= 14	2160	0 0	269.850	0.000	0✓	0.000	0✓			ハ"イメンセキ=	7826.710686	
											1/2=	3913.35	+0.00
											メンセキ=	3913.35✓	

*** ムンセキ カイサン (ハイオウキヨボウ) ***

チクメイ ... ミヤコタチク トチクカクセリシキヨウ

セリ NO... 133BL(1)✓

NO.	NO.	ANGLE	AZIMUTH	LENGTH	DX	*	DY	*	X	Y	DMD	2A	カーブムンセキ
133BL-14	133BL-28✓		183 2 37						-131344.530	-69380.367			
133BL-28	133BL-29✓	90 0 47	93 3 24✓	49.696✓	-2.650	0	49.625	0	-131347.180	-69330.742	48.939	-129.688350	
133BL-29	133BL-27✓	90 0 0	3 3 24✓	20.008✓	19.980	0	1.067	0	-131327.200	-69329.675	99.631	1990.627380	
133BL-27	133BL-13✓	89 59 1	273 2 25✓	42.645✓	2.262	0	-42.585	0	-131324.938	-69372.260	58.113	131.451606	
133BL-13	133BL-14✓	134 53 13	227 55 38✓	9.997✓	-6.699	0	-7.421	0	-131331.637	-69379.681	8.107	-54.308793	
133BL-14	133BL-28✓	135 6 59	183 2 37✓	12.911✓	-12.893	0	-0.686	0	-131344.530	-69380.367	0.000	0.000000	
TOTAL..	ソツカクスク= 5	540 0 0		135.257	0.000	0✓	0.000	0✓			ハイムンセキ=	1938.081843	
											1/2=	969.04	+0.00
											ムンセキ=	969.04✓	

セリ NO... 133BL(2)✓

133BL-27	133BL-29✓		183 3 24						-131347.180	-69330.742			
133BL-29	133BL-30✓	90 0 0	93 3 24✓	16.307✓	-0.870	0	16.284	0	-131348.050	-69314.458	15.217	-13.238790	
133BL-30	133BL-26✓	90 0 0	3 3 24✓	19.915✓	19.887	0	1.062	0	-131328.163	-69313.396	32.563	647.580381	
133BL-26	133BL-11✓	92 12 41	275 16 5✓	0.372✓	0.034	0	-0.370	0	-131328.129	-69313.766	33.255	1.130670	
133BL-11	133BL-12✓	178 48 25	274 4 30✓	4.658✓	0.331	0	-4.646	0	-131327.798	-69318.412	28.239	9.347109	
133BL-12	133BL-27✓	178 57 55	273 2 25✓	11.279✓	0.598	0	-11.263	0	-131327.200	-69329.675	12.330	7.373340	
133BL-27	133BL-29✓	90 0 59	183 3 24✓	20.008✓	-19.980	0	-1.067	0	-131347.180	-69330.742	0.000	0.000000	
TOTAL..	ソツカクスク= 6	720 0 0		72.539	0.000	0✓	0.000	0✓			ハイムンセキ=	652.192710	
											1/2=	326.09	+0.00
											ムンセキ=	326.09✓	

*** ムコセキ カイサン (ハ"イオウキヨボウ) ***

チクメイ ... ミヤコヌ"チク トチクカクセイリシ"キ"ヨウ

セリ NO... 133BL(3)✓

NO.	NO.	ANGLE	AZIMUTH	LENGTH	DX	*	DY	*	X	Y	DMD	2A	カ-フ"ムコセキ
133BL-26	133BL-30✓		183 3 24						-131348.050	-69314.458			
133BL-30	133BL-31✓	90 0 0	93 3 24✓	16.539✓	-0.882	0	16.515	0	-131348.932	-69297.943	15.453	-13.629546	
133BL-31	133BL-25✓	90 0 0	3 3 24✓	18.715✓	18.688	0	0.998	0	-131330.244	-69296.945	32.966	616.068608	
133BL-25	133BL- 8✓	96 40 11	279 43 35✓	2.309✓	0.390	0	-2.276	0	-131329.854	-69299.221	31.688	12.358320	
133BL- 8	133BL- 9✓	178 35 59	278 19 34✓	5.000✓	0.724	0	-4.947	0	-131329.130	-69304.168	24.465	17.712660	
133BL- 9	133BL-10✓	178 15 57	276 35 31✓	5.000✓	0.574	0	-4.967	0	-131328.556	-69309.135	14.551	8.352274	
133BL-10	133BL-26✓	178 40 34	275 16 5✓	4.279✓	0.393	0	-4.261	0	-131328.163	-69313.396	5.323	2.091939	
133BL-26	133BL-30✓	87 47 19	183 3 24✓	19.915✓	-19.887	0	-1.062	0	-131348.050	-69314.458	0.000	0.000000	
TOTAL..	ソツカクスク= 7	900 0 0		71.757	0.000	0✓	0.000	0✓			ハ"イムコセキ=	642.954255	
											1/2=	321.47	+0.00
											ムコセキ=	321.47✓	

セリ NO... 133BL(4)✓

133BL-25	133BL-31✓		183 3 24						-131348.932	-69297.943			
133BL-31	133BL-24✓	90 0 0	93 3 24✓	17.437✓	-0.930	1	17.412	0	-131349.861	-69280.531	16.414	-15.248606	
133BL-24	133BL- 4✓	90 0 5	3 3 29✓	15.822✓	15.799	0	0.844	0	-131334.062	-69279.687	34.670	547.751330	
133BL- 4	133BL- 5✓	101 25 33	284 29 2✓	4.998✓	1.250	0	-4.839	0	-131332.812	-69284.526	30.675	38.343750	
133BL- 5	133BL- 6✓	178 22 45	282 51 47✓	4.999✓	1.113	0	-4.874	0	-131331.699	-69289.400	20.962	23.330706	
133BL- 6	133BL- 7✓	178 41 23	281 33 10✓	4.998✓	1.001	0	-4.897	0	-131330.698	-69294.297	11.191	11.202191	
133BL- 7	133BL-25✓	178 10 25	279 43 35✓	2.687✓	0.454	0	-2.643	0	-131330.244	-69296.945	3.646	1.655284	
133BL-25	133BL-31✓	83 19 49	183 3 24✓	18.715✓	-18.688	0	-0.998	0	-131348.932	-69297.943	0.000	0.000000	
TOTAL..	ソツカクスク= 7	900 0 0		69.656	-0.001	1✓	0.000	0✓			ハ"イムコセキ=	607.034655	
											1/2=	303.51	+0.00
											ムコセキ=	303.51✓	

*** メンセキ ケイサン (ハイオウキヨホウ) ***

チクメイ ... ミヤコタチク トチクカクセイリシキヨウ

セリ NO... 133BL(5)✓

NO.	NO.	ANGLE	AZIMUTH	LENGTH	DX	*	DY	*	X	Y	DMD	2A	カ-フメンセキ
133BL-31	133BL-23✓		183 3 24						-131368.903	-69299.009			
133BL-23	133BL-3✓	90 0 0	93 3 24✓	17.436✓	-0.930	0	17.411	0	-131369.833	-69281.598	16.345	-15.200850	
133BL-3	133BL-24✓	90 0 5	3 3 29✓	20.000✓	19.972	0	1.067	0	-131349.861	-69280.531	34.823	695.484956	
133BL-24	133BL-31✓	89 59 55	273 3 24✓	17.437✓	0.930	-1	-17.412	0	-131348.932	-69297.943	18.478	17.166062	
133BL-31	133BL-23✓	90 0 0	183 3 24✓	20.000✓	-19.972	1	-1.066	0	-131368.903	-69299.009	0.000	0.000000	
TOTAL..	ソツカクスク= 4	360 0 0		74.873	0.000	0✓	0.000	0✓			ハイメンセキ=	697.450168	
											1/2=	348.72	+0.00
											メンセキ=	348.72✓	

セリ NO... 133BL(6)✓

133BL-30	133BL-22✓		183 3 24						-131368.021	-69315.524			
133BL-22	133BL-23✓	90 0 0	93 3 24✓	16.539✓	-0.882	0	16.515	0	-131368.903	-69299.009	15.449	-13.626018	
133BL-23	133BL-31✓	90 0 0	3 3 24✓	20.000✓	19.972	-1	1.066	0	-131348.932	-69297.943	33.030	659.642130	
133BL-31	133BL-30✓	90 0 0	273 3 24✓	16.539✓	0.882	0	-16.515	0	-131348.050	-69314.458	17.581	15.506442	
133BL-30	133BL-22✓	90 0 0	183 3 24✓	20.000✓	-19.972	1	-1.066	0	-131368.021	-69315.524	0.000	0.000000	
TOTAL..	ソツカクスク= 4	360 0 0		73.078	0.000	0✓	0.000	0✓			ハイメンセキ=	661.522554	
											1/2=	330.76	+0.00
											メンセキ=	330.76✓	

*** ムンセキ カイサン (ハイオウキヨホウ) ***

チクメイ ... ミヤコタチク トチクカクセイリシキヨウ

セリ NO... 133BL(7)✓

NO.	NO.	ANGLE	AZIMUTH	LENGTH	DX	*	DY	*	X	Y	DMD	2A	カーブムンセキ
133BL-29	133BL-21✓		183 3 24						-131367.152	-69331.808			
133BL-21	133BL-22✓	90 0 0	93 3 24✓	16.307✓	-0.870	1	16.284	0	-131368.021	-69315.524	15.218	-13.224442	
133BL-22	133BL-30✓	90 0 0	3 3 24✓	20.000✓	19.972	-1	1.066	0	-131348.050	-69314.458	32.568	650.415528	
133BL-30	133BL-29✓	90 0 0	273 3 24✓	16.307✓	0.870	0	-16.284	0	-131347.180	-69330.742	17.350	15.094500	
133BL-29	133BL-21✓	90 0 0	183 3 24✓	20.000✓	-19.972	0	-1.066	0	-131367.152	-69331.808	0.000	0.000000	
TOTAL..	ソツカクスウ= 4	360 0 0		72.614	0.000	0✓	0.000	0✓			ハイムンセキ=	652.285586	
											1/2=	326.14	+0.00
											ムンセキ=	326.14✓	

セリ NO... 133BL(8)✓

133BL-28	133BL- 1✓		183 2 37						-131360.920	-69381.238			
133BL- 1	133BL- 2✓	135 39 28	138 42 5✓	5.017✓	-3.769	0	3.311	0	-131364.689	-69377.927	2.440	-9.196360	
133BL- 2	133BL-21✓	134 21 19	93 3 24✓	46.184✓	-2.463	0	46.118	1	-131367.152	-69331.808	51.870	-127.755810	
133BL-21	133BL-29✓	90 0 0	3 3 24✓	20.000✓	19.972	0	1.066	0	-131347.180	-69330.742	99.055	1978.326460	
133BL-29	133BL-28✓	90 0 0	273 3 24✓	49.696✓	2.650	0	-49.625	0	-131344.530	-69380.367	50.496	133.814400	
133BL-28	133BL- 1✓	89 59 13	183 2 37✓	16.413✓	-16.390	0	-0.871	0	-131360.920	-69381.238	0.000	0.000000	
TOTAL..	ソツカクスウ= 5	540 0 0		137.310	0.000	0✓	-0.001	1✓			ハイムンセキ=	1975.188690	
											1/2=	987.59	+0.00
											ムンセキ=	987.59✓	

*** カツコウ トラハース ***

チクメイ ... ミヤコタチク トチクカクセイリシキヨウ

NO.	NO.	ANGLE	*	AZIMUTH	LENGTH	DX	*	DY	*	X	Y	NO.
	133BL-2✓									-131364.689	-69377.927	133BL-2
133BL-2	133BL-21✓		93	3 24✓	46.184✓	-2.463	0	46.118	1	-131367.152	-69331.808	133BL-21
133BL-21	133BL-22✓	180 0 0	93	3 24✓	16.307✓	-0.870	1	16.284	0	-131368.021	-69315.524	133BL-22
133BL-22	133BL-23✓	180 0 0	93	3 24✓	16.539✓	-0.882	0	16.515	0	-131368.903	-69299.009	133BL-23
133BL-23	133BL-3✓	180 0 0	93	3 24✓	17.436✓	-0.930	0	17.411	0	-131369.833	-69281.598	133BL-3
	TOTAL..	540 0 0			96.466✓	-5.145	1✓	96.328	1✓			
	133BL-3✓									-131369.833	-69281.598	133BL-3
133BL-3	133BL-24✓		3	3 29✓	20.000✓	19.972	0	1.067	0	-131349.861	-69280.531	133BL-24
133BL-24	133BL-4✓	180 0 0	3	3 29✓	15.822✓	15.799	0	0.844	0	-131334.062	-69279.687	133BL-4
	TOTAL..	180 0 0			35.822✓	35.771	0✓	1.911	0✓			
	133BL-7✓									-131330.698	-69294.297	133BL-7
133BL-7	133BL-25✓		279	43 35✓	2.687✓	0.454	0	-2.648	0	-131330.244	-69296.945	133BL-25
133BL-25	133BL-8✓	180 0 0	279	43 35✓	2.309✓	0.390	0	-2.276	0	-131329.854	-69299.221	133BL-8
	TOTAL..	180 0 0			4.996✓	0.844	0✓	-4.924	0✓			
	133BL-10✓									-131328.556	-69309.135	133BL-10
133BL-10	133BL-26✓		275	16 5✓	4.279✓	0.393	0	-4.261	0	-131328.163	-69313.396	133BL-26
133BL-26	133BL-11✓	180 0 0	275	16 5✓	0.372✓	0.034	0	-0.370	0	-131328.129	-69313.766	133BL-11
	TOTAL..	180 0 0			4.651✓	0.427	0✓	-4.631	0✓			
	133BL-12✓									-131327.798	-69318.412	133BL-12
133BL-12	133BL-27✓		273	2 25✓	11.279✓	0.598	0	-11.263	0	-131327.200	-69329.675	133BL-27

*** ケツコウ トラハ"-ス ***

チクメイ ... ミヤコタチク トチクカクセイリシキ"ヨク

NO.	NO.	ANGLE	*	AZIMUTH	LENGTH	DX	*	DY	*	X	Y	NO.
133BL-27	133BL-13✓	180 0 0		273 2 25✓	42.645✓	2.262	0	-42.585	0	-131324.938	-69372.260	133BL-13
	TOTAL..	180 0 0			53.924✓	2.860	0✓	-53.848	0✓			
	133BL-14✓									-131331.637	-69379.681	133BL-14
133BL-14	133BL-28✓			183 2 37✓	12.911✓	-12.893	0	-0.686	0	-131344.530	-69380.367	133BL-28
133BL-28	133BL-1✓	180 0 0		183 2 37✓	16.413✓	-16.390	0	-0.871	0	-131360.920	-69381.238	133BL-1
	TOTAL..	180 0 0			29.324✓	-29.283	0✓	-1.557	0✓			
	133BL-28✓									-131344.530	-69380.367	133BL-28
133BL-28	133BL-29✓			93 3 24✓	49.696✓	-2.650	0	49.625	0	-131347.180	-69330.742	133BL-29
133BL-29	133BL-30✓	180 0 0		93 3 24✓	16.307✓	-0.870	0	16.284	0	-131348.050	-69314.458	133BL-30
133BL-30	133BL-31✓	180 0 0		93 3 24✓	16.539✓	-0.882	0	16.515	0	-131348.932	-69297.943	133BL-31
133BL-31	133BL-24✓	180 0 0		93 3 24✓	17.437✓	-0.930	1	17.412	0	-131349.861	-69280.531	133BL-24
	TOTAL..	540 0 0			99.979✓	-5.332	1✓	99.836	0✓			
	133BL-27✓									-131327.200	-69329.675	133BL-27
133BL-27	133BL-29✓			183 3 24✓	20.008✓	-19.980	0	-1.067	0	-131347.180	-69330.742	133BL-29
133BL-29	133BL-21✓	180 0 0		183 3 24✓	20.000✓	-19.972	0	-1.066	0	-131367.152	-69331.808	133BL-21
	TOTAL..	180 0 0			40.008✓	-39.952	0✓	-2.133	0✓			
	133BL-26✓									-131328.163	-69313.396	133BL-26
133BL-26	133BL-30✓			183 3 24✓	19.915	-19.887	0	-1.062	0	-131348.050	-69314.458	133BL-30
133BL-30	133BL-22✓	180 0 0		183 3 24✓	20.000	-19.972	1	-1.066	0	-131368.021	-69315.524	133BL-22
	TOTAL..	180 0 0			39.915✓	-39.859	1✓	-2.128	0✓			

*** ケツコウ トラハ"-入 ***

チウメイ ... ミヤコヌ"チク トチクカクセイリシ"キ"ヨウ

NO.	NO.	ANGLE	*	AZIMUTH	LENGTH	DX	*	DY	*	X	Y	NO.
	133BL-25✓									-131330.244	-69296.945	133BL-25
133BL-25	133BL-31✓		183	3 24✓	18.715✓	-18.688	0	-0.998	0	-131348.932	-69297.943	133BL-31
133BL-31	133BL-23✓	180 0 0	183	3 24✓	20.000✓	-19.972	1	-1.066	0	-131368.903	-69299.009	133BL-23
	TOTAL..	180 0 0			38.715✓	-38.660	1✓	-2.064	0✓			