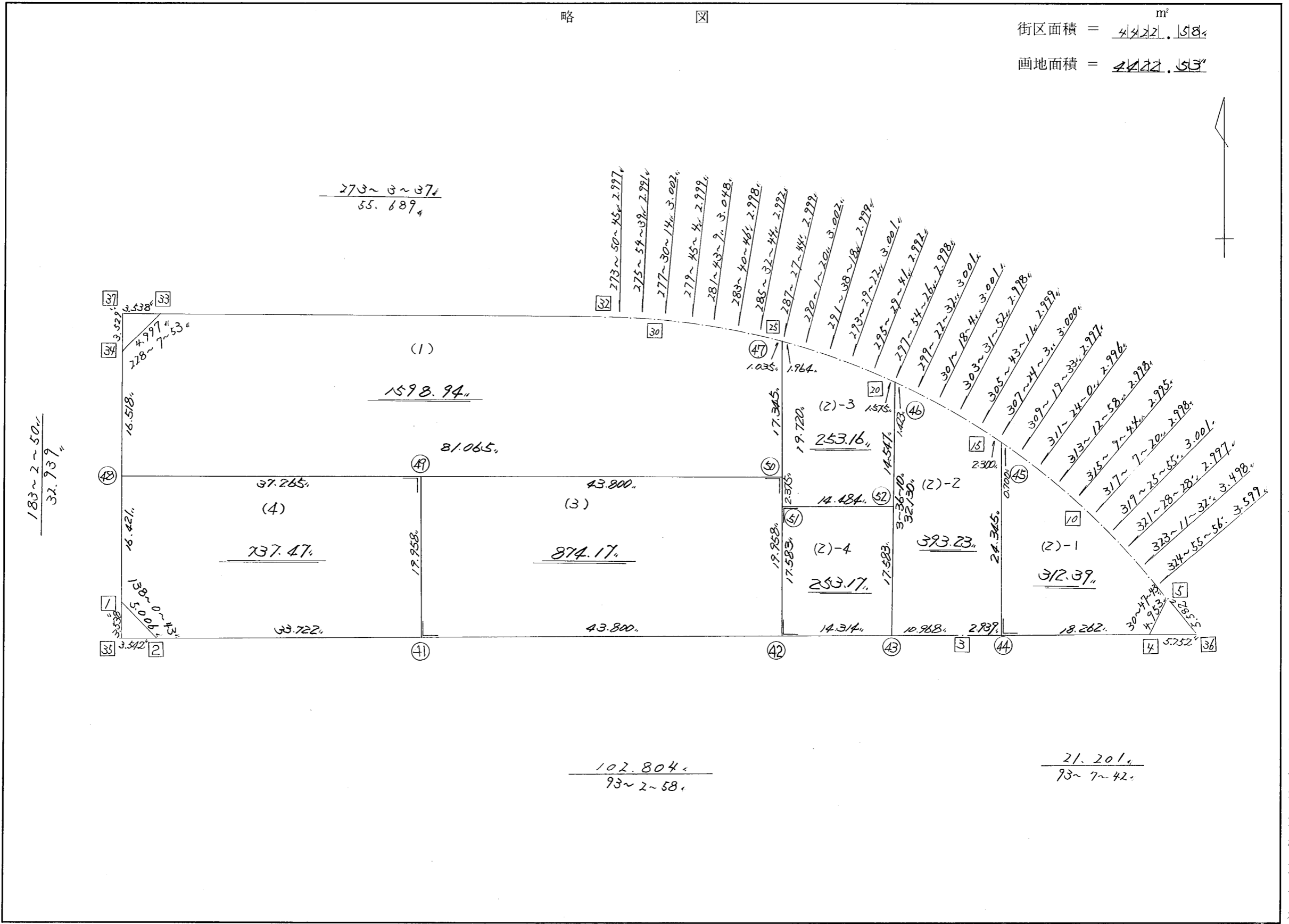


略 図

街区面積 = $\frac{4422.53}{1.58}$ m²
 画地面積 = $\frac{4422.53}{1.53}$



$\frac{183 \sim 2 \sim 50}{32.939}$

$\frac{273 \sim 3 \sim 37}{55.689}$

$\frac{102.804}{93 \sim 2 \sim 58}$

$\frac{21.201}{93 \sim 7 \sim 42}$

街区点番号 1 ~ 37, 筆界点番号 41 ~ 52, 画地番号 (1) ~ (4)

*** メンセキ ケイサン (ハイオウキヨホウ) ***

チクメイ ... ミヤコタチク トチクカクセイリシキヨウ

セリ NO... 134BL

NO.	NO.	ANGLE	AZIMUTH	LENGTH	DX	*	DY	*	X	Y	DMD	2A	カ-フメシキ
134BL-34	134BL-1✓		183 2 50						-131409.349	-69337.781			
134BL-1	134BL-2✓	134 57 53	138 0 43✓	5.006✓	-3.721	0	3.349	0	-131413.070	-69334.432	1.598	-5.946158	
134BL-2	134BL-3✓	135 2 15	93 2 58✓	102.804✓	-5.469	0	102.658	0	-131418.539	-69231.774	107.605	-588.491745	
134BL-3	134BL-4✓	180 4 44	93 7 42✓	21.201✓	-1.157	0	21.169	0	-131419.696	-69210.605	231.432	-267.766824	
134BL-4	134BL-5✓	117 40 1	30 47 43✓	4.953✓	4.255	0	2.536	0	-131415.441	-69208.069	255.137	1085.607935	
134BL-5	134BL-6✓	114 8 13	324 55 56✓	3.599✓	2.946	0	-2.068	0	-131412.495	-69210.137	255.605	753.012330	
134BL-6	134BL-7✓	178 15 36	323 11 32✓	3.498✓	2.801	0	-2.096	0	-131409.694	-69212.233	251.441	704.286241	
134BL-7	134BL-8✓	178 16 56	321 28 28✓	2.997✓	2.345	0	-1.867	0	-131407.349	-69214.100	247.478	580.335910	
134BL-8	134BL-9✓	177 57 27	319 25 55✓	3.001✓	2.280	0	-1.952	0	-131405.069	-69216.052	243.659	555.542520	
134BL-9	134BL-10✓	177 41 25	317 7 20✓	2.998✓	2.197	0	-2.040	0	-131402.872	-69218.092	239.667	526.548399	
134BL-10	134BL-11✓	178 2 24	315 9 44✓	2.995✓	2.124	0	-2.112	0	-131400.748	-69220.204	235.515	500.233860	
134BL-11	134BL-12✓	178 3 14	313 12 58✓	2.998✓	2.053	0	-2.185	0	-131398.695	-69222.389	231.218	474.690554	
134BL-12	134BL-13✓	178 11 2	311 24 0✓	2.996✓	1.981	0	-2.247	0	-131396.714	-69224.636	226.786	449.263066	
134BL-13	134BL-14✓	177 55 33	309 19 33✓	2.997✓	1.899	0	-2.318	0	-131394.815	-69226.954	222.221	421.997679	
134BL-14	134BL-15✓	178 4 30	307 24 3✓	3.000✓	1.822	0	-2.383	0	-131392.993	-69229.337	217.520	396.321440	
134BL-15	134BL-16✓	178 19 8	305 43 11✓	2.999✓	1.751	0	-2.435	0	-131391.242	-69231.772	212.702	372.441202	
134BL-16	134BL-17✓	177 48 41	303 31 52✓	2.998✓	1.656	0	-2.499	0	-131389.586	-69234.271	207.768	344.063808	
134BL-17	134BL-18✓	177 46 12	301 18 4✓	3.001✓	1.559	0	-2.564	0	-131388.027	-69236.835	202.705	316.017095	
134BL-18	134BL-19✓	178 4 28	299 22 32✓	3.001✓	1.472	0	-2.615	0	-131386.555	-69239.450	197.526	290.758272	
134BL-19	134BL-20✓	178 31 54	297 54 26✓	2.998✓	1.403	0	-2.649	0	-131385.152	-69242.099	192.262	269.743586	
134BL-20	134BL-21✓	177 35 15	295 29 41✓	2.992✓	1.288	0	-2.701	0	-131383.864	-69244.800	186.912	240.742656	
134BL-21	134BL-22✓	177 59 41	293 29 22✓	3.001✓	1.196	0	-2.752	0	-131382.668	-69247.552	181.459	217.024964	
134BL-22	134BL-23✓	178 8 56	291 38 18✓	2.999✓	1.106	0	-2.788	0	-131381.562	-69250.340	175.919	194.566414	
134BL-23	134BL-24✓	178 23 2	290 1 20✓	3.002✓	1.028	0	-2.821	0	-131380.534	-69253.161	170.310	175.078680	

*** メンセキ ケイサン (ハイオウキヨホウ) ***

チクメイ ... ミヤコタチク トチクカクセイリシキヨウ

セリ NO... 134BL[✓]

NO.	NO.	ANGLE	AZIMUTH	LENGTH	DX	*	DY	*	X	Y	DMD	2A	カーブメンセキ
134BL-24	134BL-25 [✓]	177 26 24	287 27 44 [✓]	2.999 [✓]	0.900	0	-2.861	0	-131379.634	-69256.022	164.628	148.165200	
134BL-25	134BL-26 [✓]	178 5 0	285 32 44 [✓]	2.992 [✓]	0.802	0	-2.883	0	-131378.832	-69258.905	158.884	127.424968	
134BL-26	134BL-27 [✓]	178 8 2	283 40 46 [✓]	2.998 [✓]	0.709	0	-2.913	0	-131378.123	-69261.818	153.088	108.539392	
134BL-27	134BL-28 [✓]	178 2 23	281 43 9 [✓]	3.048 [✓]	0.619	0	-2.984	0	-131377.504	-69264.802	147.191	91.111229	
134BL-28	134BL-29 [✓]	178 1 55	279 45 4 [✓]	2.999 [✓]	0.508	0	-2.956	0	-131376.996	-69267.758	141.251	71.755508	
134BL-29	134BL-30 [✓]	177 45 10	277 30 14 [✓]	3.002 [✓]	0.392	0	-2.976	0	-131376.604	-69270.734	135.319	53.045048	
134BL-30	134BL-31 [✓]	178 24 25	275 54 39 [✓]	2.991 [✓]	0.308	0	-2.975	0	-131376.296	-69273.709	129.368	39.845344	
134BL-31	134BL-32 [✓]	177 56 6	273 50 45 [✓]	2.997 [✓]	0.201	0	-2.990	0	-131376.095	-69276.699	123.403	24.804003	
134BL-32	134BL-33 [✓]	179 12 52	273 3 37 [✓]	55.689 [✓]	2.973	0	-55.610	0	-131373.122	-69332.309	64.803	192.659319	
134BL-33	134BL-34 [✓]	135 4 16	228 7 53 [✓]	4.997 [✓]	-3.335	0	-3.721	0	-131376.457	-69336.030	5.472	-18.249120	
134BL-34	134BL-1 [✓]	134 54 57	183 2 50 [✓]	32.939 [✓]	-32.892	0	-1.751	0	-131409.349	-69337.781	0.000	0.000000	
TOTAL..	ツツカクウ= 34	5760	0 0	309.685	0.000 [✓]	0	0.000 [✓]	0			ハイメンセキ=	8845.172775	
											1/2=	4422.58	+0.00
											メンセキ=	4422.58 [✓]	

*** ムツセキ ケイサン (ハイオウキヨホウ) ***

チクメイ ... ミヤコタチク トチクカクセイリシキヨウ

セリ NO... 134BL(1)✓

NO.	NO.	ANGLE	AZIMUTH	LENGTH	DX	*	DY	*	X	Y	DMD	2A	カ-フムツセキ
134BL-34	134BL-48✓		183 2 50						-131392.951	-69336.908			
134BL-48	134BL-50✓	90 0 8	93 2 58✓	81.065✓	-4.312	-1	80.950	0	-131397.264	-69255.958	80.072	-345.350536	
134BL-50	134BL-47✓	90 0 0	3 2 58✓	17.345✓	17.320	0	0.923	0	-131379.944	-69255.035	161.945	2804.887400	
134BL-47	134BL-25✓	104 24 46	287 27 44✓	1.035✓	0.311	-1	-0.987	0	-131379.634	-69256.022	161.881	50.183110	
134BL-25	134BL-26✓	178 5 0	285 32 44✓	2.992✓	0.802	0	-2.883	0	-131378.832	-69258.905	158.011	126.724822	
134BL-26	134BL-27✓	178 8 2	283 40 46✓	2.998✓	0.709	0	-2.913	0	-131378.123	-69261.818	152.215	107.920435	
134BL-27	134BL-28✓	178 2 23	281 43 9✓	3.048✓	0.619	0	-2.984	0	-131377.504	-69264.802	146.318	90.570842	
134BL-28	134BL-29✓	178 1 55	279 45 4✓	2.999✓	0.508	0	-2.956	0	-131376.996	-69267.758	140.378	71.312024	
134BL-29	134BL-30✓	177 45 10	277 30 14✓	3.002✓	0.392	0	-2.976	0	-131376.604	-69270.734	134.446	52.702832	
134BL-30	134BL-31✓	178 24 25	275 54 39✓	2.991✓	0.308	0	-2.975	0	-131376.296	-69273.709	128.495	39.576460	
134BL-31	134BL-32✓	177 56 6	273 50 45✓	2.997✓	0.201	0	-2.990	0	-131376.095	-69276.699	122.530	24.628530	
134BL-32	134BL-33✓	179 12 52	273 3 37✓	55.689✓	2.973	0	-55.610	0	-131373.122	-69332.309	63.930	190.063890	
134BL-33	134BL-34✓	135 4 16	228 7 53✓	4.997✓	-3.335	0	-3.721	0	-131376.457	-69336.030	4.599	-15.337665	
134BL-34	134BL-48✓	134 54 57	183 2 50✓	16.518✓	-16.495	1	-0.878	0	-131392.951	-69336.908	0.000	0.000000	
TOTAL..	ソツカク入=	13	1980 0 0	197.676	0.001	-1✓	0.000	0✓			ハイムツセキ=	3197.882144	
											1/2=	1598.94✓	+0.00
											ムツセキ=	1598.94	

*** メンセキ ケイサン (ハ"イオウキヨホウ) ***

チクメイ ... ミヤコタ"チク トチクカクセイリシ"キ"ヨウ

レイ NO... 134BL⁽²⁾⁻¹✓

NO.	NO.	ANGLE	AZIMUTH	LENGTH	DX	*	DY	*	X	Y	DMD	2A	カ-フ"メンセキ
134BL-45	134BL-44✓		183 7 42						-131418.699	-69228.839			
134BL-44	134BL-4✓	90 0 0	93 7 42✓	18.262✓	-0.997	0	18.235	-1	-131419.696	-69210.605	16.905	-16.854285	
134BL-4	134BL-5✓	117 40 1	30 47 43✓	4.953✓	4.255	0	2.536	0	-131415.441	-69208.069	37.675	160.307125	
134BL-5	134BL-6✓	114 8 13	324 55 56✓	3.599✓	2.946	0	-2.068	0	-131412.495	-69210.137	38.143	112.369278	
134BL-6	134BL-7✓	178 15 36	323 11 32✓	3.498✓	2.801	0	-2.096	0	-131409.694	-69212.233	33.979	95.175179	
134BL-7	134BL-8✓	178 16 56	321 28 28✓	2.997✓	2.345	0	-1.867	0	-131407.349	-69214.100	30.016	70.387520	
134BL-8	134BL-9✓	177 57 27	319 25 55✓	3.001✓	2.280	0	-1.952	0	-131405.069	-69216.052	26.197	59.729160	
134BL-9	134BL-10✓	177 41 25	317 7 20✓	2.998✓	2.197	0	-2.040	0	-131402.872	-69218.092	22.205	48.784385	
134BL-10	134BL-11✓	178 2 24	315 9 44✓	2.995✓	2.124	0	-2.112	0	-131400.748	-69220.204	18.053	38.344572	
134BL-11	134BL-12✓	178 3 14	313 12 58✓	2.998✓	2.053	0	-2.185	0	-131398.695	-69222.389	13.756	28.241068	
134BL-12	134BL-13✓	178 11 2	311 24 0✓	2.996✓	1.981	0	-2.247	0	-131396.714	-69224.636	9.324	18.470844	
134BL-13	134BL-14✓	177 55 33	309 19 33✓	2.997✓	1.899	0	-2.318	0	-131394.815	-69226.954	4.759	9.037341	
134BL-14	134BL-45✓	178 4 30	307 24 3✓	0.700✓	0.425	0	-0.556	0	-131394.390	-69227.510	1.885	0.801125	
134BL-45	134BL-44✓	55 43 39	183 7 42✓	24.345✓	-24.309	0	-1.329	0	-131418.699	-69228.839	0.000	0.000000	
TOTAL..	ソツカク入ウ= 13	1980 0 0		76.339	0.000	0✓	0.001	-1✓			ハ"イメンセキ=	624.793312	
											1/2=	312.39	+0.00
											メンセキ=	312.39✓	

レイ NO... 134BL⁽²⁾⁻⁴✓

134BL-51	134BL-42✓		183 2 58						-131417.194	-69257.020			
134BL-42	134BL-43✓	90 0 0	93 2 58✓	14.314✓	-0.761	-1	14.294	0	-131417.956	-69242.726	13.358	-10.178796	
134BL-43	134BL-52✓	90 33 12	3 36 10✓	17.583✓	17.548	1	1.105	0	-131400.407	-69241.621	28.757	504.656593	
134BL-52	134BL-51✓	89 26 48	273 2 58✓	14.484✓	0.771	0	-14.463	0	-131399.636	-69256.084	15.399	11.872629	
134BL-51	134BL-42✓	90 0 0	183 2 58✓	17.583✓	-17.558	0	-0.935	-1	-131417.194	-69257.020	0.000	0.000000	
TOTAL..	ソツカク入ウ= 4	360 0 0		63.964	0.000	0✓	0.001	-1✓			ハ"イメンセキ=	506.350426	
											1/2=	253.17	+0.00
											メンセキ=	253.17✓	

*** メンセキ ケイサン (ハイオウキヨホウ) ***

チクメイ ... ミヤコタチク トチクカクセイリシキヨウ

セイリ NO... 134BL⁽²⁻²⁾₍₃₎✓

NO.	NO.	ANGLE	AZIMUTH	LENGTH	DX	*	DY	*	X	Y	DMD	2A	カ-フメンセキ
134BL-46	134BL-43✓		183 36 10						-131417.956	-69242.726			
134BL-43	134BL-3✓	89 26 48	93 2 58✓	10.968✓	-0.583	0	10.952	0	-131418.539	-69231.774	8.933	-5.207939	
134BL-3	134BL-44✓	180 4 44	93 7 42✓	2.939✓	-0.160	0	2.935	0	-131418.699	-69228.839	22.820	-3.651200	
134BL-44	134BL-45✓	90 0 0	3 7 42✓	24.345✓	24.309	0	1.329	0	-131394.390	-69227.510	27.084	658.384956	
134BL-45	134BL-15✓	124 16 21	307 24 3✓	2.300✓	1.397	0	-1.827	0	-131392.993	-69229.337	26.586	37.140642	
134BL-15	134BL-16✓	178 19 8	305 43 11✓	2.999✓	1.751	0	-2.435	0	-131391.242	-69231.772	22.324	39.089324	
134BL-16	134BL-17✓	177 48 41	303 31 52✓	2.998✓	1.656	0	-2.499	0	-131389.586	-69234.271	17.390	28.797840	
134BL-17	134BL-18✓	177 46 12	301 18 4✓	3.001✓	1.559	0	-2.564	0	-131388.027	-69236.835	12.327	19.217793	
134BL-18	134BL-19✓	178 4 28	299 22 32✓	3.001✓	1.472	0	-2.615	0	-131386.555	-69239.450	7.148	10.521856	
134BL-19	134BL-46✓	178 31 54	297 54 26✓	1.423✓	0.666	0	-1.258	1	-131385.889	-69240.707	3.276	2.181816	
134BL-46	134BL-43✓	65 41 44	183 36 10✓	32.130✓	-32.067	0	-2.019	0	-131417.956	-69242.726	0.000	0.000000	
TOTAL..	ソツカクスク= 10	1440	0 0	86.104	0.000	0✓	-0.001	1✓			ハイメンセキ=	786.475088	
											1/2=	393.23	+0.00
											メンセキ=	393.23✓	

*** メンセキ ケイサン (ハイオウキヨホウ) ***

チクメイ ... ミヤコタチク トチクカクセイリシキヨウ

レイリ NO... 134BL⁽²⁻³⁾₍₂₂₎

NO.	NO.	ANGLE	AZIMUTH	LENGTH	DX	*	DY	*	X	Y	DMD	2A	カーブメンセキ
134BL-47	134BL-51 ✓		183 2 58						-131399.636	-69256.084			
134BL-51	134BL-52 ✓	90 0 0	93 2 58 ✓	14.484 ✓	-0.771	0	14.463	0	-131400.407	-69241.621	13.414	-10.342194	
134BL-52	134BL-46 ✓	90 33 12	3 36 10 ✓	14.547 ✓	14.518	0	0.914	0	-131385.889	-69240.707	28.791	417.987738	
134BL-46	134BL-20 ✓	114 18 16	297 54 26 ✓	1.575 ✓	0.737	0	-1.392	0	-131385.152	-69242.099	28.313	20.866681	
134BL-20	134BL-21 ✓	177 35 15	295 29 41 ✓	2.992 ✓	1.288	0	-2.701	0	-131383.864	-69244.800	24.220	31.195360	
134BL-21	134BL-22 ✓	177 59 41	293 29 22 ✓	3.001 ✓	1.196	0	-2.752	0	-131382.668	-69247.552	18.767	22.445332	
134BL-22	134BL-23 ✓	178 8 56	291 38 18 ✓	2.999 ✓	1.106	0	-2.788	0	-131381.562	-69250.340	13.227	14.629062	
134BL-23	134BL-24 ✓	178 23 2	290 1 20 ✓	3.002 ✓	1.028	0	-2.821	0	-131380.534	-69253.161	7.618	7.831304	
134BL-24	134BL-47 ✓	177 26 24	287 27 44 ✓	1.964 ✓	0.589	1	-1.873	-1	-131379.944	-69255.035	2.923	1.724570	
134BL-47	134BL-51 ✓	75 35 14	183 2 58 ✓	19.720 ✓	-19.692	0	-1.049	0	-131399.636	-69256.084	0.000	0.000000	
TOTAL..	ソツカクスク= 9	1260	0 0	64.284	-0.001	1 ✓	0.001	-1 ✓			ハイメンセキ=	506.337853	
											1/2=	253.16	+0.00
											メンセキ=	253.16 ✓	

*** メンセキ カイサン (ハイオウキヨホウ) ***

チクメイ ... ミヤコタチク トチクカクセイツシキヨウ

セリ NO... 134BL (6) ³✓

NO.	NO.	ANGLE	AZIMUTH	LENGTH	DX	*	DY	*	X	Y	DMD	2A	カ-フメンセキ
134BL-49	134BL-41✓		183 2 58						-131414.864	-69300.758			
134BL-41	134BL-42✓	90 0 0	93 2 58✓	43.800✓	-2.330	0	43.738	0	-131417.194	-69257.020	42.676	-99.435080	
134BL-42	134BL-50✓	90 0 0	3 2 58✓	19.958✓	19.930	0	1.062	0	-131397.264	-69255.958	87.476	1743.396680	
134BL-50	134BL-49✓	90 0 0	273 2 58✓	43.800✓	2.330	0	-43.738	0	-131394.934	-69299.696	44.800	104.384000	
134BL-49	134BL-41✓	90 0 0	183 2 58✓	19.958✓	-19.930	0	-1.062	0	-131414.864	-69300.758	0.000	0.000000	
TOTAL..	ソツカクスク= 4	360 0 0		127.516	0.000	0✓	0.000	0✓			ハイメンセキ=	1748.345600	
											1/2=	874.17	+0.00
											メンセキ=	874.17✓	

セリ NO... 134BL (7) ⁴✓

134BL-48	134BL- 1✓		183 2 50						-131409.349	-69337.781			
134BL- 1	134BL- 2✓	134 57 53	138 0 43✓	5.006✓	-3.721	0	3.349	0	-131413.070	-69334.432	2.476	-9.213196	
134BL- 2	134BL-41✓	135 2 15	93 2 58✓	33.722✓	-1.794	0	33.674	0	-131414.864	-69300.758	39.499	-70.861206	
134BL-41	134BL-49✓	90 0 0	3 2 58✓	19.958✓	19.930	0	1.062	0	-131394.934	-69299.696	74.235	1479.503550	
134BL-49	134BL-48✓	90 0 0	273 2 58✓	37.265✓	1.982	1	-37.212	0	-131392.951	-69336.908	38.085	75.522555	
134BL-48	134BL- 1✓	89 59 52	183 2 50✓	16.421✓	-16.398	0	-0.873	0	-131409.349	-69337.781	0.000	0.000000	
TOTAL..	ソツカクスク= 5	540 0 0		112.372	-0.001	1✓	0.000	0✓			ハイメンセキ=	1474.951703	
											1/2=	737.47	+0.00
											メンセキ=	737.47✓	

*** ケツコウ トラハ"-ス ***

チクメイ ... ミヤコタチク トチクカクセイリシキ"ヨウ

NO.	NO.	ANGLE	*	AZIMUTH	LENGTH	DX	*	DY	*	X	Y	NO.
	134BL- 2✓									-131413.070	-69334.432	134BL- 2
134BL- 2	134BL-41✓		93	2 58✓	33.722✓	-1.794	0	33.674	0	-131414.864	-69300.758	134BL-41
134BL-41	134BL-42✓	180 0 0	93	2 58✓	43.800✓	-2.330	0	43.738	0	-131417.194	-69257.020	134BL-42
134BL-42	134BL-43✓	180 0 0	93	2 58✓	14.314✓	-0.761	-1	14.294	0	-131417.956	-69242.726	134BL-43
134BL-43	134BL- 3✓	180 0 0	93	2 58✓	10.968✓	-0.583	0	10.952	0	-131418.539	-69231.774	134BL- 3
	TOTAL..	540 0 0			102.804✓	-5.468	-1✓	102.658	0✓			
	134BL- 3✓									-131418.539	-69231.774	134BL- 3
134BL- 3	134BL-44✓		93	7 42✓	2.939✓	-0.160	0	2.935	0	-131418.699	-69228.839	134BL-44
134BL-44	134BL- 4✓	180 0 0	93	7 42✓	18.262✓	-0.997	0	18.235	-1	-131419.696	-69210.605	134BL- 4
	TOTAL..	180 0 0			21.201✓	-1.157	0✓	21.170	-1✓			
	134BL-14✓									-131394.815	-69226.954	134BL-14
134BL-14	134BL-45✓		307	24 3✓	0.700✓	0.425	0	-0.556	0	-131394.390	-69227.510	134BL-45
134BL-45	134BL-15✓	180 0 0	307	24 3✓	2.300✓	1.397	0	-1.827	0	-131392.993	-69229.337	134BL-15
	TOTAL..	180 0 0			3.000✓	1.822	0✓	-2.383	0✓			
	134BL-19✓									-131386.555	-69239.450	134BL-19
134BL-19	134BL-46✓		297	54 26✓	1.423✓	0.666	0	-1.258	1	-131385.889	-69240.707	134BL-46
134BL-46	134BL-20✓	180 0 0	297	54 26✓	1.575✓	0.737	0	-1.392	0	-131385.152	-69242.099	134BL-20
	TOTAL..	180 0 0			2.998✓	1.403	0✓	-2.650	1✓			
	134BL-24✓									-131380.534	-69253.161	134BL-24
134BL-24	134BL-47✓		287	27 44✓	1.964✓	0.589	1	-1.873	-1	-131379.944	-69255.035	134BL-47

*** ケツコウ トラハ"-入 ***

チクメイ ... ミヤコタチク トチクカクセイリシ"キ"ヨウ

NO.	NO.	ANGLE	*	AZIMUTH	LENGTH	DX	*	DY	*	X	Y	NO.
134BL-47	134BL-25✓	180 0 0		287 27 44 ✓	1.035✓	0.311	-1	-0.987	0	-131379.634	-69256.022	134BL-25
	TOTAL..	180 0 0			2.999✓	0.900	0✓	-2.860	-1✓			
	134BL-34									-131376.457	-69336.030	134BL-34
134BL-34	134BL-48			183 2 50✓	16.518✓	-16.495	1	-0.878	0	-131392.951	-69336.908	134BL-48
134BL-48	134BL-1	180 0 0		183 2 50✓	16.421✓	-16.398	0	-0.873	0	-131409.349	-69337.781	134BL-1
	TOTAL..	180 0 0			32.939✓	-32.893	1✓	-1.751	0✓			
	134BL-48									-131392.951	-69336.908	134BL-48
134BL-48	134BL-49			93 2 58✓	37.265✓	-1.982	-1	37.212	0	-131394.934	-69299.696	134BL-49
134BL-49	134BL-50	180 0 0		93 2 58✓	43.800✓	-2.330	0	43.738	0	-131397.264	-69255.958	134BL-50
	TOTAL..	180 0 0			81.065✓	-4.312	-1✓	80.950	0✓			
	134BL-47									-131379.944	-69255.035	134BL-47
134BL-47	134BL-50			183 2 58✓	17.345✓	-17.320	0	-0.923	0	-131397.264	-69255.958	134BL-50
134BL-50	134BL-42	180 0 0		183 2 58✓	19.958✓	-19.930	0	-1.062	0	-131417.194	-69257.020	134BL-42
	TOTAL..	180 0 0			37.303✓	-37.250	0✓	-1.985	0✓			
	134BL-47✓									-131379.944	-69255.035	134BL-47
134BL-47	134BL-51✓			183 2 58✓	19.720✓	-19.692	0	-1.049	0	-131399.636	-69256.084	134BL-51
134BL-51	134BL-42✓	180 0 0		183 2 58✓	17.583✓	-17.558	0	-0.935	-1	-131417.194	-69257.020	134BL-42
	TOTAL..	180 0 0			37.303✓	-37.250	0✓	-1.984	-1✓			
	134BL-47✓									-131379.944	-69255.035	134BL-47

*** ケツコウ トラハ"-入 ***

チクメイ ... ミヤコタチク トチクカクセイリシキヨウ

NO.	NO.	ANGLE	*	AZIMUTH	LENGTH	DX	*	DY	*	X	Y	NO.
134BL-47	134BL-50 ✓			183 2 58 ✓	17.345 ✓	-17.320	0	-0.923	0	-131397.264	-69255.958	134BL-50
134BL-50	134BL-51 ✓	180 0 0		183 2 58 ✓	2.375 ✓	-2.372	0	-0.126	0	-131399.636	-69256.084	134BL-51
134BL-51	134BL-42 ✓	180 0 0		183 2 58 ✓	17.583 ✓	-17.558	0	-0.935	-1	-131417.194	-69257.020	134BL-42
	TOTAL..	360 0 0			37.303 ✓	-37.250	0 ✓	-1.984	-1 ✓			
	134BL-46 ✓									-131385.889	-69240.707	134BL-46
134BL-46	134BL-52 ✓			183 36 10 ✓	14.547 ✓	-14.518	0	-0.914	0	-131400.407	-69241.621	134BL-52
134BL-52	134BL-43 ✓	180 0 0		183 36 10 ✓	17.583 ✓	-17.548	-1	-1.105	0	-131417.956	-69242.726	134BL-43
	TOTAL..	180 0 0			32.130 ✓	-32.066	-1 ✓	-2.019	0 ✓			