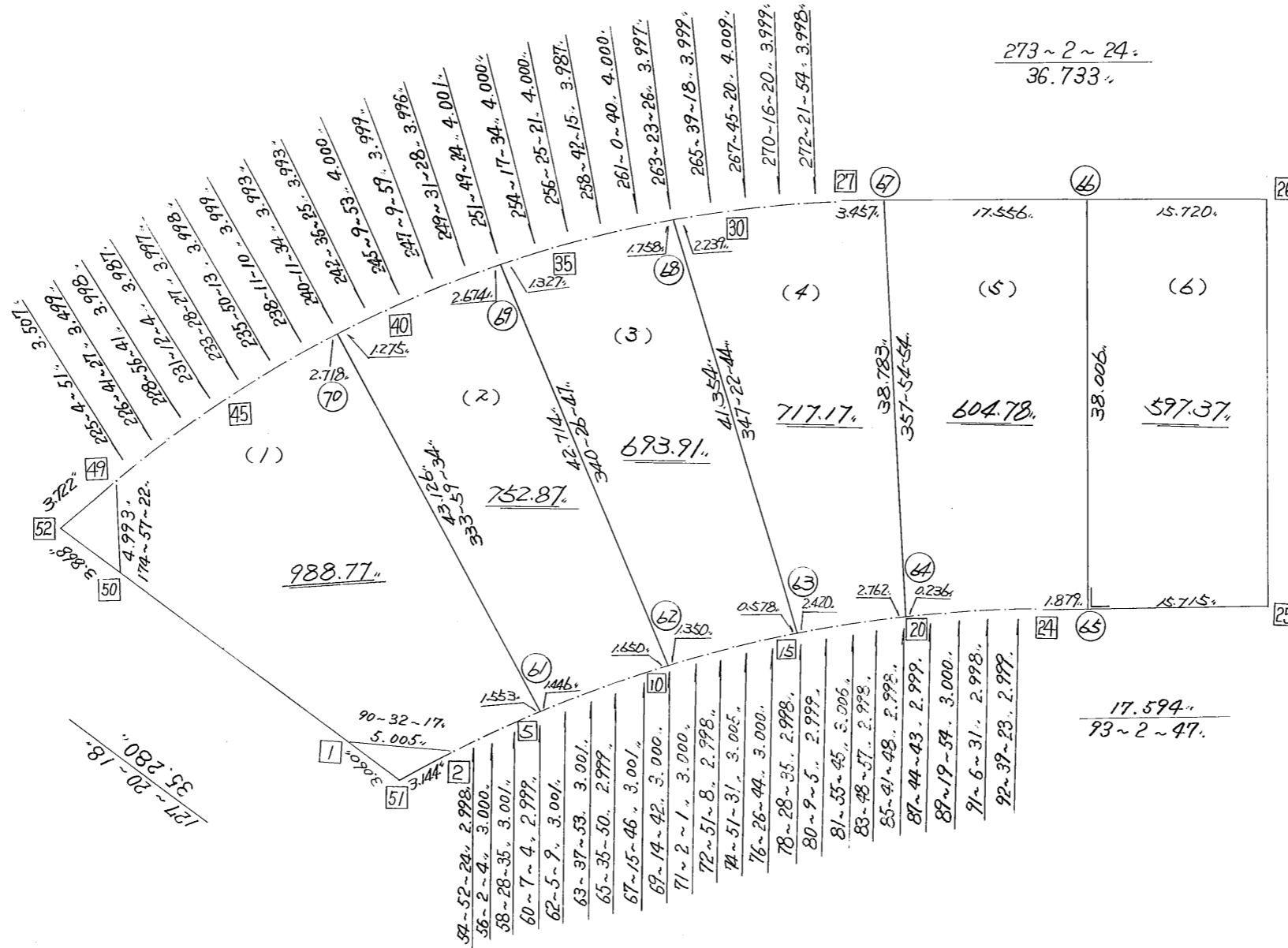


略 図

街区面積 = 4354.87 ^{m²}
 画地面積 = 4354.87



街区点番号 1 ~ 52 〃 筆界点番号 61 ~ 70 〃 画地番号 (1) ~ (6) 〃

*** メンセキ ケイサン (ハ"イオウキヨホウ) ***

チクメイ ... ミヤコタ"チク トチクカクセイリヨ"キ"ヨウ

ペリ NO... 138BL ✓

NO.	NO.	ANGLE	AZIMUTH	LENGTH	DX	*	DY	*	X	Y	DMD	2A	カ-フ"メ"セキ
138BL-50	138BL-1✓		127 20 18✓						-131374.045	-69569.837			
138BL-1	138BL-2✓	143 11 59	90 32 17✓	5.005✓	-0.047	0	5.005	0	-131374.092	-69564.832	33.055	-1.553585	
138BL-2	138BL-3✓	144 20 7	54 52 24✓	2.998✓	1.725	0	2.452	0	-131372.367	-69562.380	40.512	69.883200	
138BL-3	138BL-4✓	181 9 40	56 2 4✓	3.000✓	1.676	0	2.488	0	-131370.691	-69559.892	45.452	76.177552	
138BL-4	138BL-5✓	182 26 31	58 28 35✓	3.001✓	1.569	0	2.558	0	-131369.122	-69557.334	50.498	79.231362	
138BL-5	138BL-6✓	181 38 29	60 7 4✓	2.999✓	1.494	0	2.600	0	-131367.628	-69554.734	55.656	83.150064	
138BL-6	138BL-7✓	181 58 5	62 5 9✓	3.001✓	1.405	0	2.652	0	-131366.223	-69552.082	60.908	85.575740	
138BL-7	138BL-8✓	181 32 44	63 37 53✓	3.001✓	1.333	0	2.689	0	-131364.890	-69549.393	66.249	88.309917	
138BL-8	138BL-9✓	181 57 57	65 35 50✓	2.999✓	1.239	0	2.731	0	-131363.651	-69546.662	71.669	88.797891	
138BL-9	138BL-10✓	181 39 56	67 15 46✓	3.001✓	1.160	0	2.768	0	-131362.491	-69543.894	77.168	89.514880	
138BL-10	138BL-11✓	181 58 56	69 14 42✓	3.000✓	1.063	0	2.805	0	-131361.428	-69541.089	82.741	87.953683	
138BL-11	138BL-12✓	181 47 19	71 2 1✓	3.000✓	0.975	0	2.837	0	-131360.453	-69538.252	88.383	86.173425	
138BL-12	138BL-13✓	181 49 7	72 51 8✓	2.998✓	0.884	0	2.865	0	-131359.569	-69535.387	94.085	83.171140	
138BL-13	138BL-14✓	182 0 23	74 51 31✓	3.005✓	0.785	0	2.901	0	-131358.784	-69532.486	99.851	78.383035	
138BL-14	138BL-15✓	181 35 13	76 26 44✓	3.000✓	0.703	0	2.916	0	-131358.081	-69529.570	105.668	74.284604	
138BL-15	138BL-16✓	182 1 51	78 28 35✓	2.998✓	0.599	0	2.938	0	-131357.482	-69526.632	111.522	66.801678	
138BL-16	138BL-17✓	181 40 30	80 9 5✓	2.999✓	0.513	0	2.955	0	-131356.969	-69523.677	117.415	60.233895	
138BL-17	138BL-18✓	181 46 40	81 55 45✓	3.006✓	0.422	0	2.976	0	-131356.547	-69520.701	123.346	52.052012	
138BL-18	138BL-19✓	181 53 12	83 48 57✓	2.998✓	0.323	0	2.981	0	-131356.224	-69517.720	129.303	41.764869	
138BL-19	138BL-20✓	181 52 51	85 41 48✓	2.998✓	0.225	0	2.990	0	-131355.999	-69514.730	135.274	30.436650	
138BL-20	138BL-21✓	182 2 55	87 44 43✓	2.999✓	0.118	0	2.997	0	-131355.881	-69511.733	141.261	16.668798	
138BL-21	138BL-22✓	181 35 11	89 19 54✓	3.000✓	0.035	0	3.000	0	-131355.846	-69508.733	147.258	5.154030	
138BL-22	138BL-23✓	181 46 37	91 6 31✓	2.998✓	-0.058	0	2.997	0	-131355.904	-69505.736	153.255	-8.888790	
138BL-23	138BL-24✓	181 32 52	92 39 23✓	2.999✓	-0.139	0	2.996	0	-131356.043	-69502.740	159.248	-22.135472	

*** メンセキ ケイサン (ハイオウキヨホウ) ***

チクメイ ... ミヤコタチク トチクカクセイリヨキキヨウ

セリ NO... 138BL

NO.	NO.	ANGLE	AZIMUTH	LENGTH	DX	*	DY	*	X	Y	DMD	2A	カ-フメンセキ
138BL-24	138BL-25	180 23 24	93 2 47	17.594	-0.935	0	17.569	0	-131356.978	-69485.171	179.813	-168.125155	
138BL-25	138BL-26	90 0 23	3 3 10	38.007	37.953	0	2.024	0	-131319.025	-69483.147	199.406	7568.055918	
138BL-26	138BL-27	89 59 14	273 2 24	36.733	1.948	0	-36.681	0	-131317.077	-69519.828	164.749	320.931052	
138BL-27	138BL-28	179 19 30	272 21 54	3.998	0.165	0	-3.995	0	-131316.912	-69523.823	124.073	20.472045	
138BL-28	138BL-29	177 54 26	270 16 20	3.999	0.019	0	-3.999	0	-131316.893	-69527.822	116.079	2.205501	
138BL-29	138BL-30	177 29 0	267 45 20	4.009	-0.157	0	-4.006	0	-131317.050	-69531.828	108.074	-16.967618	
138BL-30	138BL-31	177 53 58	265 39 18	3.999	-0.303	0	-3.988	0	-131317.353	-69535.816	100.080	-30.324240	
138BL-31	138BL-32	177 44 8	263 23 26	3.997	-0.460	0	-3.970	0	-131317.813	-69539.786	92.122	-42.376120	
138BL-32	138BL-33	177 37 14	261 0 40	4.000	-0.625	0	-3.951	0	-131318.433	-69543.737	84.201	-52.625625	
138BL-33	138BL-34	177 41 35	258 42 15	3.987	-0.781	0	-3.910	0	-131319.219	-69547.647	76.340	-59.621540	
138BL-34	138BL-35	177 43 6	256 25 21	4.000	-0.939	0	-3.888	0	-131320.158	-69551.535	68.542	-64.360938	
138BL-35	138BL-36	177 52 13	254 17 34	4.000	-1.083	0	-3.851	0	-131321.241	-69555.386	60.803	-65.849649	
138BL-36	138BL-37	177 31 50	251 49 24	4.001	-1.248	0	-3.801	0	-131322.489	-69559.187	53.151	-66.332448	
138BL-37	138BL-38	177 42 4	249 31 28	3.996	-1.398	0	-3.744	0	-131323.887	-69562.931	45.606	-63.757188	
138BL-38	138BL-39	177 38 31	247 9 59	3.999	-1.552	0	-3.686	0	-131325.439	-69566.617	38.176	-59.249152	
138BL-39	138BL-40	177 59 54	245 9 53	4.000	-1.680	0	-3.630	0	-131327.119	-69570.247	30.860	-51.844800	
138BL-40	138BL-41	177 26 32	242 36 25	3.993	-1.837	0	-3.545	0	-131328.956	-69573.792	23.685	-43.509345	
138BL-41	138BL-42	177 35 9	240 11 34	3.993	-1.985	0	-3.465	0	-131330.941	-69577.257	16.675	-33.099875	
138BL-42	138BL-43	177 59 36	238 11 10	3.999	-2.108	0	-3.398	0	-131333.049	-69580.655	9.812	-20.683696	
138BL-43	138BL-44	177 39 3	235 50 13	3.998	-2.245	0	-3.308	0	-131335.294	-69583.963	3.106	-6.972970	
138BL-44	138BL-45	177 38 14	233 28 27	3.997	-2.379	0	-3.212	0	-131337.673	-69587.175	-3.414	8.121906	
138BL-45	138BL-46	177 43 37	231 12 4	3.987	-2.498	0	-3.107	0	-131340.171	-69590.282	-9.733	24.313034	
138BL-46	138BL-47	177 44 37	228 56 41	3.998	-2.626	0	-3.015	0	-131342.797	-69593.297	-15.855	41.635230	
138BL-47	138BL-48	177 44 46	226 41 27	3.499	-2.400	0	-2.546	0	-131345.197	-69595.843	-21.416	51.398400	

*** メンセキ ケイサン (ハイオウキヨホウ) ***

チクメイ ... ミヤコタチク トチクカクセイリシキヨウ

ペリ NO... 138BL

NO.	NO.	ANGLE	AZIMUTH	LENGTH	DX	*	DY	*	X	Y	DMD	2A	カ-フメンセキ
138BL-48	138BL-49	178 23 24	225 4 51	3.507	-2.476	0	-2.483	0	-131347.673	-69598.326	-26.445	65.477820	
138BL-49	138BL-50	129 52 31	174 57 22	4.993	-4.974	0	0.439	0	-131352.647	-69597.887	-28.489	141.704286	
138BL-50	138BL-1	132 22 56	127 20 18	35.280	-21.398	0	28.050	0	-131374.045	-69569.837	0.000	0.000000	
TOTAL..	ソツカクスク = 50	8640	0 0	290.566	0.000	0	0.000	0				8709.755411	
											1/2 =	4354.87	+0.00
											メンセキ =	4354.87	

*** メンセキ ケイサン (ハイオウキヨホウ) ***

チクメイ ... ミヤコタチク トチクカクセイリシキヨウ

セイリ NO... 138BL(1) ✓

NO.	NO.	ANGLE	AZIMUTH	LENGTH	DX	*	DY	*	X	Y	DMD	2A	カ-フメンセキ
138BL-50	138BL-1 ✓		127 20 18						-131374.045	-69569.837			
138BL-1	138BL-2 ✓	143 11 59	90 32 17 ✓	5.005 ✓	-0.047	0	5.005	0	-131374.092	-69564.832	33.055	-1.553585	
138BL-2	138BL-3 ✓	144 20 7	54 52 24 ✓	2.998 ✓	1.725	0	2.452	0	-131372.367	-69562.380	40.512	69.883200	
138BL-3	138BL-4 ✓	181 9 40	56 2 4 ✓	3.000 ✓	1.676	0	2.488	0	-131370.691	-69559.892	45.452	76.177552	
138BL-4	138BL-5 ✓	182 26 31	58 28 35 ✓	3.001 ✓	1.569	0	2.558	0	-131369.122	-69557.334	50.498	79.231362	
138BL-5	138BL-61 ✓	181 38 29	60 7 4 ✓	1.553 ✓	0.774	-1	1.347	-1	-131368.349	-69555.988	54.402	42.052746	
138BL-61	138BL-70 ✓	93 52 30	333 59 34 ✓	43.126 ✓	38.759	0	-18.910	0	-131329.590	-69574.898	36.838	1427.804042	
138BL-70	138BL-42 ✓	86 12 0	240 11 34 ✓	2.718 ✓	-1.351	0	-2.358	-1	-131330.941	-69577.257	15.569	-21.033719	
138BL-42	138BL-43 ✓	177 59 36	238 11 10 ✓	3.999 ✓	-2.108	0	-3.398	0	-131333.049	-69580.655	9.812	-20.683696	
138BL-43	138BL-44 ✓	177 39 3	235 50 13 ✓	3.998 ✓	-2.245	0	-3.308	0	-131335.294	-69583.963	3.106	-6.972970	
138BL-44	138BL-45 ✓	177 38 14	233 28 27 ✓	3.997 ✓	-2.379	0	-3.212	0	-131337.673	-69587.175	-3.414	8.121906	
138BL-45	138BL-46 ✓	177 43 37	231 12 4 ✓	3.987 ✓	-2.498	0	-3.107	0	-131340.171	-69590.282	-9.733	24.313034	
138BL-46	138BL-47 ✓	177 44 37	228 56 41 ✓	3.998 ✓	-2.626	0	-3.015	0	-131342.797	-69593.297	-15.855	41.635230	
138BL-47	138BL-48 ✓	177 44 46	226 41 27 ✓	3.499 ✓	-2.400	0	-2.546	0	-131345.197	-69595.843	-21.416	51.398400	
138BL-48	138BL-49 ✓	178 23 24	225 4 51 ✓	3.507 ✓	-2.476	0	-2.483	0	-131347.673	-69598.326	-26.445	65.477820	
138BL-49	138BL-50 ✓	129 52 31	174 57 22 ✓	4.993 ✓	-4.974	0	0.439	0	-131352.647	-69597.887	-28.489	141.704286	
138BL-50	138BL-1 ✓	132 22 56	127 20 18 ✓	35.280 ✓	-21.398	0	28.050	0	-131374.045	-69569.837	0.000	0.000000	
TOTAL..	ソツカクスク= 16	2520	0 0	128.659	0.001	-1 ✓	0.002	-2 ✓			ハイメンセキ=	1977.555608	
											1/2=	988.77	+0.00
											メンセキ=	988.77 ✓	

*** メンセキ ケイザン (ハ"イオウキヨホウ) ***

チクメイ ... ミヤコタ"チク トチクカクセイリシ"キ"ヨウ

セイリ NO... 138BL ⁽²⁾/₍₃₎

NO.	NO.	ANGLE	AZIMUTH	LENGTH	DX	*	DY	*	X	Y	DMD	2A	カーブ"メンセキ
138BL-70	138BL-61✓		153 59 34						-131368.349	-69555.988			
138BL-61	138BL-6✓	86 7 30	60 7 4✓	1.446✓	0.720	1	1.254	0	-131367.628	-69554.734	20.164	14.538244	
138BL-6	138BL-7✓	181 58 5	62 5 9✓	3.001✓	1.405	0	2.652	0	-131366.223	-69552.082	24.070	33.818350	
138BL-7	138BL-8✓	181 32 44	63 37 53✓	3.001✓	1.333	0	2.689	0	-131364.890	-69549.393	29.411	39.204863	
138BL-8	138BL-9✓	181 57 57	65 35 50✓	2.999✓	1.239	0	2.731	0	-131363.651	-69546.662	34.831	43.155609	
138BL-9	138BL-10✓	181 39 56	67 15 46✓	3.001✓	1.160	0	2.768	0	-131362.491	-69543.894	40.330	46.782800	
138BL-10	138BL-62✓	181 58 56	69 14 42✓	1.650✓	0.585	0	1.543	0	-131361.906	-69542.351	44.641	26.114985	
138BL-62	138BL-69✓	91 12 5 340	26 47✓	42.714✓	40.251	0	-14.296	0	-131321.655	-69556.647	31.888	1283.523888	
138BL-69	138BL-37✓	91 22 37 251	49 24✓	2.674✓	-0.834	0	-2.541	1	-131322.489	-69559.187	15.052	-12.553368	
138BL-37	138BL-38✓	177 42 4 249	31 28✓	3.996✓	-1.398	0	-3.744	0	-131323.887	-69562.931	8.768	-12.257664	
138BL-38	138BL-39✓	177 38 31 247	9 59✓	3.999✓	-1.552	0	-3.686	0	-131325.439	-69566.617	1.338	-2.076576	
138BL-39	138BL-40✓	177 59 54 245	9 53✓	4.000✓	-1.680	0	-3.630	0	-131327.119	-69570.247	-5.978	10.043040	
138BL-40	138BL-41✓	177 26 32 242	36 25✓	3.993✓	-1.837	0	-3.545	0	-131328.956	-69573.792	-13.153	24.162061	
138BL-41	138BL-70✓	177 35 9 240	11 34✓	1.275✓	-0.634	0	-1.106	0	-131329.590	-69574.898	-17.804	11.287736	
138BL-70	138BL-61✓	93 48 0 153	59 34✓	43.126✓	-38.759	0	18.910	0	-131368.349	-69555.988	0.000	0.000000	
TOTAL..	ツツカスウ= 14	2160	0 0		120.875	-0.001	1✓	-0.001	1✓		ハ"イオウキ=	1505.743968	
											1/2=	752.87	+0.00
											メンセキ=	752.87✓	

*** メンセキ ケイサン (ハイオウキヨホウ) ***

チクメイ ... ミヤコタチク トチクカクセイリシキヨウ

セイリ NO... 138BL ⁽³⁾/₍₄₎ ✓

NO.	NO.	ANGLE	AZIMUTH	LENGTH	DX	*	DY	*	X	Y	DMD	2A	カーブメンセキ
138BL-69	138BL-62 ✓		160 26 47						-131361.906	-69542.351			
138BL-62	138BL-11 ✓	88 47 55	69 14 42 ✓	1.350 ✓	0.478	0	1.262	0	-131361.428	-69541.089	15.558	7.436724	
138BL-11	138BL-12 ✓	181 47 19	71 2 1 ✓	3.000 ✓	0.975	0	2.837	0	-131360.453	-69538.252	19.657	19.165575	
138BL-12	138BL-13 ✓	181 49 7	72 51 8 ✓	2.998 ✓	0.884	0	2.865	0	-131359.569	-69535.387	25.359	22.417356	
138BL-13	138BL-14 ✓	182 0 23	74 51 31 ✓	3.005 ✓	0.785	0	2.901	0	-131358.784	-69532.486	31.125	24.433125	
138BL-14	138BL-15 ✓	181 35 13	76 26 44 ✓	3.000 ✓	0.703	0	2.916	0	-131358.081	-69529.570	36.942	25.970226	
138BL-15	138BL-63 ✓	182 1 51	78 28 35 ✓	0.578 ✓	0.115	0	0.566	0	-131357.966	-69529.004	40.424	4.648760	
138BL-63	138BL-68 ✓	88 54 9	347 22 44 ✓	41.354 ✓	40.355	0	-9.036	0	-131317.611	-69538.040	31.954	1289.503670	
138BL-68	138BL-32 ✓	96 0 42	263 23 26 ✓	1.758 ✓	-0.202	0	-1.746	0	-131317.813	-69539.786	21.172	-4.276744	
138BL-32	138BL-33 ✓	177 37 14	261 0 40 ✓	4.000 ✓	-0.625	0	-3.951	0	-131318.438	-69543.737	15.475	-9.671875	
138BL-33	138BL-34 ✓	177 41 35	258 42 15 ✓	3.987 ✓	-0.781	0	-3.910	0	-131319.219	-69547.647	7.614	-5.946534	
138BL-34	138BL-35 ✓	177 43 6	256 25 21 ✓	4.000 ✓	-0.939	0	-3.888	0	-131320.158	-69551.535	-0.184	0.172776	
138BL-35	138BL-36 ✓	177 52 13	254 17 34 ✓	4.000 ✓	-1.083	0	-3.851	0	-131321.241	-69555.386	-7.923	8.580609	
138BL-36	138BL-69 ✓	177 31 50	251 49 24 ✓	1.327 ✓	-0.414	0	-1.261	0	-131321.655	-69556.647	-13.035	5.396490	
138BL-69	138BL-62 ✓	88 37 23	160 26 47 ✓	42.714 ✓	-40.251	0	14.296	0	-131361.906	-69542.351	0.000	0.000000	
TOTAL..	ソツカクスウ= 14	2160	0 0	117.071	0.000	0 ✓	0.000	0 ✓			ハイメンセキ=	1387.830158	
											1/2=	693.91	+0.00
											メンセキ=	693.91 ✓	

*** ムンセキ ケイサン (ハイイオウキヨホウ) ***

チクメイ ... ミヤコタチク トチクカクセイリヨキヨウ

セイリ NO... 138BL ~~(5)~~ (4) ✓

NO.	NO.	ANGLE	AZIMUTH	LENGTH	DX	*	DY	*	X	Y	DMD	2A	カーブムンセキ
138BL-68	138BL-63,,		167 22 44						-131357.966	-69529.004			
138BL-63	138BL-16,,	91 5 51	78 28 35✓	2.420✓	0.483	1	2.371	1	-131357.482	-69526.632	11.408	5.521472	
138BL-16	138BL-17,,	181 40 30	80 9 5✓	2.999✓	0.513	0	2.955	0	-131356.969	-69523.677	16.735	8.585055	
138BL-17	138BL-18,,	181 46 40	81 55 45✓	3.006✓	0.422	0	2.976	0	-131356.547	-69520.701	22.666	9.565052	
138BL-18	138BL-19,,	181 53 12	83 48 57✓	2.998✓	0.323	0	2.981	0	-131356.224	-69517.720	28.623	9.245229	
138BL-19	138BL-64,,	181 52 51	85 41 48✓	2.762✓	0.207	0	2.754	1	-131356.017	-69514.965	34.359	7.112313	
138BL-64	138BL-67,,	92 13 6	357 54 54✓	38.783✓	38.757	0	-1.411	0	-131317.260	-69516.376	35.703	1383.741171	
138BL-67	138BL-27,,	95 7 30	273 2 24✓	3.457✓	0.183	0	-3.452	0	-131317.077	-69519.828	30.840	5.643720	
138BL-27	138BL-28,,	179 19 30	272 21 54✓	3.998✓	0.165	0	-3.995	0	-131316.912	-69523.823	23.393	3.859845	
138BL-28	138BL-29,,	177 54 26	270 16 20✓	3.999✓	0.019	0	-3.999	0	-131316.893	-69527.822	15.399	0.292581	
138BL-29	138BL-30,,	177 29 0	267 45 20✓	4.009✓	-0.157	0	-4.006	0	-131317.050	-69531.828	7.394	-1.160858	
138BL-30	138BL-31,,	177 53 58	265 39 18✓	3.999✓	-0.303	0	-3.988	0	-131317.353	-69535.816	-0.600	0.181800	
138BL-31	138BL-68,,	177 44 8	263 23 26✓	2.239✓	-0.258	0	-2.224	0	-131317.611	-69538.040	-6.812	1.757496	
138BL-68	138BL-63,,	83 59 18	167 22 44✓	41.354✓	-40.355	0	9.036	0	-131357.966	-69529.004	0.000	0.000000	
TOTAL..	ソツカクスウ= 13	1980	0 0	116.023	-0.001	1✓	-0.002	2✓			ハイイムンセキ=	1434.344876	
											1/2=	717.17	+0.00
											ムンセキ=	717.17✓	

*** メンセキ ケイサン (ハイイウキヨホウ) ***

チクメイ ... ミヤコタチク トチクカクセイリシキヨウ

セリ NO... 138BL ~~(6)~~ ✓

NO.	NO.	ANGLE	AZIMUTH	LENGTH	DX	*	DY	*	X	Y	DMD	2A	カ-フメンセキ
138BL-67	138BL-64 ✓		177 54 54						-131356.017	-69514.965			
138BL-64	138BL-20 ✓	87 46 54	85 41 48 ✓	0.236 ✓	0.018	0	0.235	0	-131355.999	-69514.730	1.646	0.029628	
138BL-20	138BL-21 ✓	182 2 55	87 44 43 ✓	2.999 ✓	0.118	0	2.997	0	-131355.881	-69511.733	4.878	0.575604	
138BL-21	138BL-22 ✓	181 35 11	89 19 54 ✓	3.000 ✓	0.035	0	3.000	0	-131355.846	-69508.733	10.875	0.380625	
138BL-22	138BL-23 ✓	181 46 37	91 6 31 ✓	2.998 ✓	-0.058	0	2.997	0	-131355.904	-69505.736	16.872	-0.978576	
138BL-23	138BL-24 ✓	181 32 52	92 39 23 ✓	2.999 ✓	-0.139	0	2.996	0	-131356.043	-69502.740	22.865	-3.178235	
138BL-24	138BL-65 ✓	180 23 24	93 2 47 ✓	1.879 ✓	-0.100	0	1.876	0	-131356.143	-69500.864	27.737	-2.773700	
138BL-65	138BL-66 ✓	90 0 0	3 2 47 ✓	38.006 ✓	37.952	0	2.020	-1	-131318.191	-69498.845	31.632	1200.497664	
138BL-66	138BL-67 ✓	89 59 37	273 2 24 ✓	17.556 ✓	0.931	0	-17.531	0	-131317.260	-69516.376	16.120	15.007720	
138BL-67	138BL-64 ✓	84 52 30	177 54 54 ✓	38.783 ✓	-38.757	0	1.411	0	-131356.017	-69514.965	0.000	0.000000	
TOTAL..	ソツカクスタウ= 9	1260	0 0	108.456	0.000	0 ✓	0.001	-1 ✓			ハイイウキセキ=	1209.560730	
											1/2=	604.78	+0.00
											メンセキ=	604.78 ✓	

セリ NO... 138BL ~~(7)~~ ✓

138BL-66	138BL-65 ✓		183 2 47						-131356.143	-69500.864			
138BL-65	138BL-25 ✓	90 0 0	93 2 47 ✓	15.715 ✓	-0.835	0	15.693	0	-131356.978	-69485.171	13.674	-11.417790	
138BL-25	138BL-26 ✓	90 0 23	3 3 10 ✓	38.007 ✓	37.953	0	2.024	0	-131319.025	-69483.147	31.391	1191.382623	
138BL-26	138BL-66 ✓	89 59 14	273 2 24 ✓	15.720 ✓	0.834	0	-15.698	0	-131318.191	-69498.845	17.717	14.775978	
138BL-66	138BL-65 ✓	90 0 23	183 2 47 ✓	38.006 ✓	-37.952	0	-2.020	1	-131356.143	-69500.864	0.000	0.000000	
TOTAL..	ソツカクスタウ= 4	360	0 0	107.448	0.000	0 ✓	-0.001	1 ✓			ハイイウキセキ=	1194.740811	
											1/2=	597.37	+0.00
											メンセキ=	597.37 ✓	

*** ケツコウ トライランス ***

チクメイ ... ミヤコダチク トチクカクセイリシキヨウ

NO.	NO.	ANGLE	*	AZIMUTH	LENGTH	DX	*	DY	*	X	Y	NO.
	138BL-5 ✓									-131369.122	-69557.334	138BL-5
138BL-5	138BL-61 ✓			60 7 4 ✓	1.553 ✓	0.774	-1	1.347	-1	-131368.349	-69555.988	138BL-61
138BL-61	138BL-6 ✓	180 0 0		60 7 4 ✓	1.446 ✓	0.720	1	1.254	0	-131367.628	-69554.734	138BL-6
	TOTAL..	180 0 0			2.999 ✓	1.494	0 ✓	2.601	-1 ✓			
	138BL-10 ✓									-131362.491	-69543.894	138BL-10
138BL-10	138BL-62 ✓			69 14 42 ✓	1.650 ✓	0.585	0	1.543	0	-131361.906	-69542.351	138BL-62
138BL-62	138BL-11 ✓	180 0 0		69 14 42 ✓	1.350 ✓	0.478	0	1.262	0	-131361.428	-69541.089	138BL-11
	TOTAL..	180 0 0			3.000 ✓	1.063	0 ✓	2.805	0 ✓			
	138BL-15 ✓									-131358.081	-69529.570	138BL-15
138BL-15	138BL-63 ✓			78 28 35 ✓	0.578 ✓	0.115	0	0.566	0	-131357.966	-69529.004	138BL-63
138BL-63	138BL-16 ✓	180 0 0		78 28 35 ✓	2.420 ✓	0.483	1	2.371	1	-131357.482	-69526.632	138BL-16
	TOTAL..	180 0 0			2.998 ✓	0.598	1 ✓	2.937	1 ✓			
	138BL-19 ✓									-131356.224	-69517.720	138BL-19
138BL-19	138BL-64 ✓			85 41 48 ✓	2.762 ✓	0.207	0	2.754	1	-131356.017	-69514.965	138BL-64
138BL-64	138BL-20 ✓	180 0 0		85 41 48 ✓	0.236 ✓	0.018	0	0.235	0	-131355.999	-69514.730	138BL-20
	TOTAL..	180 0 0			2.998 ✓	0.225	0 ✓	2.989	1 ✓			
	138BL-24 ✓									-131356.043	-69502.740	138BL-24
138BL-24	138BL-65 ✓			93 2 47 ✓	1.879 ✓	-0.100	0	1.876	0	-131356.143	-69500.864	138BL-65
138BL-65	138BL-25 ✓	180 0 0		93 2 47 ✓	15.715 ✓	-0.835	0	15.693	0	-131356.978	-69485.171	138BL-25
	TOTAL..	180 0 0			17.594 ✓	-0.935	0 ✓	17.569	0 ✓			

*** ケツコウ トラハス ***

チクメイ ... ミヤコダチク トチクカクセイリシキヨウ

NO.	NO.	ANGLE	*	AZIMUTH	LENGTH	DX	*	DY	*	X	Y	NO.
	138BL-26									-131319.025	-69483.147	138BL-26
138BL-26	138BL-66 ✓			273 2 24 ✓	15.720 ✓	0.834	0	-15.698	0	-131318.191	-69498.845	138BL-66
138BL-66	138BL-67 ✓	180 0 0		273 2 24 ✓	17.556 ✓	0.931	0	-17.531	0	-131317.260	-69516.376	138BL-67
138BL-67	138BL-27 ✓	180 0 0		273 2 24 ✓	3.457 ✓	0.183	0	-3.452	0	-131317.077	-69519.828	138BL-27
	TOTAL..	360 0 0			36.733 ✓	1.948	0 ✓	-36.681	0 ✓			
	138BL-31									-131317.353	-69535.816	138BL-31
138BL-31	138BL-68 ✓			263 23 26 ✓	2.239 ✓	-0.258	0	-2.224	0	-131317.611	-69538.040	138BL-68
138BL-68	138BL-32 ✓	180 0 0		263 23 26 ✓	1.758 ✓	-0.202	0	-1.746	0	-131317.813	-69539.786	138BL-32
	TOTAL..	180 0 0			3.997 ✓	-0.460	0 ✓	-3.970	0 ✓			
	138BL-36									-131321.241	-69555.386	138BL-36
138BL-36	138BL-69 ✓			251 49 24 ✓	1.327 ✓	-0.414	0	-1.261	0	-131321.655	-69556.647	138BL-69
138BL-69	138BL-37 ✓	180 0 0		251 49 24 ✓	2.674 ✓	-0.834	0	-2.541	1	-131322.489	-69559.187	138BL-37
	TOTAL..	180 0 0			4.001 ✓	-1.248	0 ✓	-3.802	1 ✓			
	138BL-41									-131328.956	-69573.792	138BL-41
138BL-41	138BL-70 ✓			240 11 34 ✓	1.275 ✓	-0.634	0	-1.106	0	-131329.590	-69574.898	138BL-70
138BL-70	138BL-42 ✓	180 0 0		240 11 34 ✓	2.718 ✓	-1.351	0	-2.358	-1	-131330.941	-69577.257	138BL-42
	TOTAL..	180 0 0			3.993 ✓	-1.985	0 ✓	-3.464	-1 ✓			