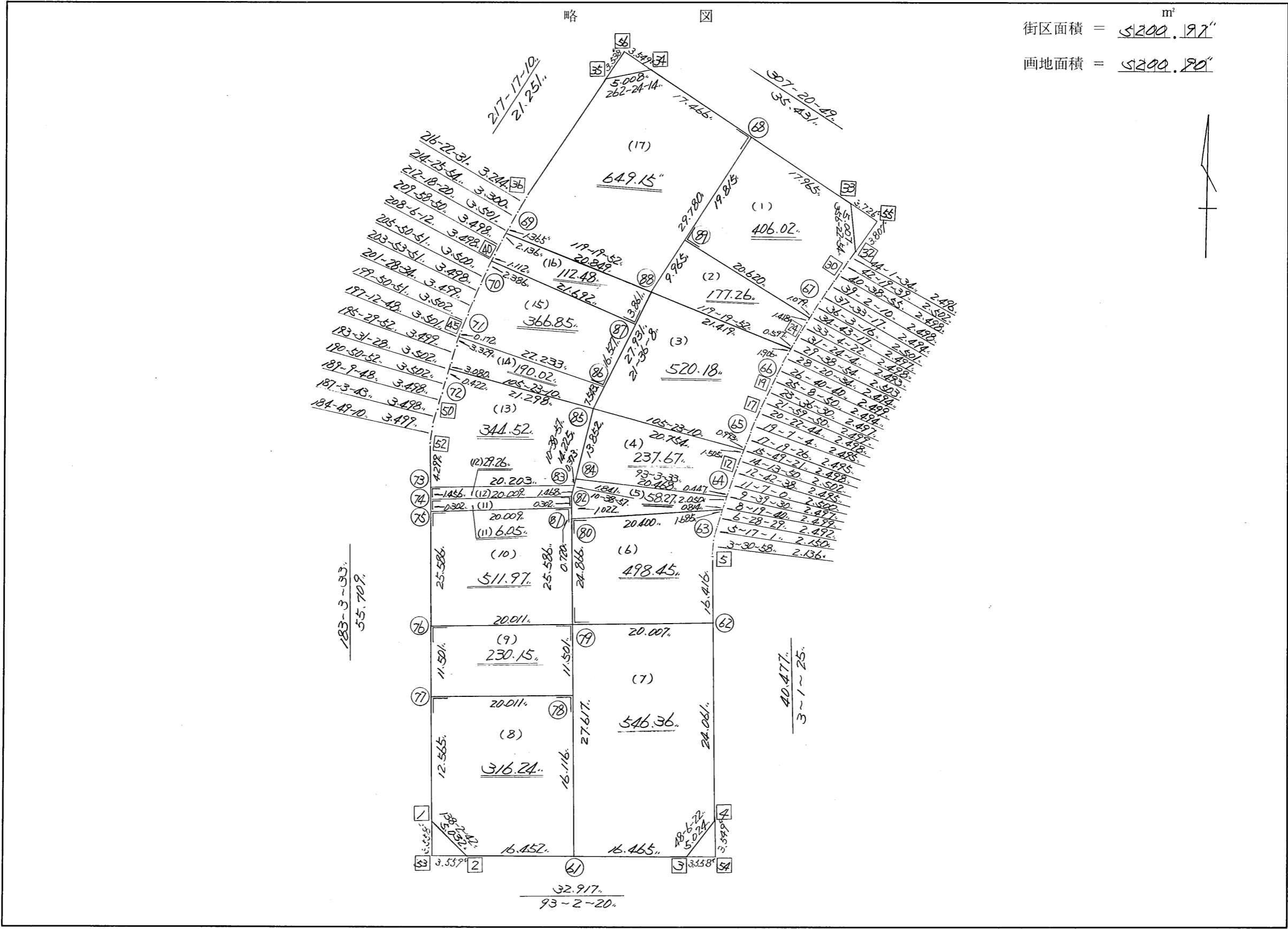


街区面積 = 5200.17^m
 画地面積 = 5200.90"



*** メンセキ ケイサン (ハイオウキヨホウ) ***

チクメイ ... ミヤコタチク トチクカクセイリシキヨウ

セリ NO... 139BL

NO.	NO.	ANGLE	AZIMUTH	LENGTH	DX	*	DY	*	X	Y	DMD	2A	カ-7"メンセキ
139BL-52	139BL- 1		183 3 33						-131483.199	-69643.123			
139BL- 1	139BL- 2	134 59 9	138 2 42	5.032	-3.742	0	3.364	0	-131486.941	-69639.759	0.391	-1.463122	
139BL- 2	139BL- 3	134 59 38	93 2 20	32.917	-1.745	0	32.871	0	-131488.686	-69606.888	36.626	-63.912370	
139BL- 3	139BL- 4	135 4 2	48 6 22	5.024	3.355	0	3.740	0	-131485.331	-69603.148	73.237	245.710135	
139BL- 4	139BL- 5	134 55 3	3 1 25	40.477	40.421	0	2.135	0	-131444.910	-69601.013	79.112	3197.786152	
139BL- 5	139BL- 6	180 29 33	3 30 58	2.136	2.132	0	0.131	0	-131442.778	-69600.882	81.378	173.497896	
139BL- 6	139BL- 7	181 46 3	5 17 1	2.150	2.141	0	0.198	0	-131440.637	-69600.684	81.707	174.934687	
139BL- 7	139BL- 8	181 11 28	6 28 29	2.492	2.476	0	0.281	0	-131438.161	-69600.403	82.186	203.492536	
139BL- 8	139BL- 9	181 51 11	8 19 40	2.499	2.473	0	0.362	0	-131435.688	-69600.041	82.829	204.836117	
139BL- 9	139BL-10	181 19 50	9 39 30	2.497	2.462	0	0.419	0	-131433.226	-69599.622	83.610	205.847820	
139BL-10	139BL-11	181 27 30	11 7 0	2.500	2.453	0	0.482	0	-131430.773	-69599.140	84.511	207.305483	
139BL-11	139BL-12	181 35 38	12 42 38	2.495	2.434	0	0.549	0	-131428.339	-69598.591	85.542	208.209228	
139BL-12	139BL-13	181 31 12	14 13 50	2.502	2.425	0	0.615	0	-131425.914	-69597.976	86.706	210.262050	
139BL-13	139BL-14	181 35 31	15 49 21	2.498	2.403	0	0.681	0	-131423.511	-69597.295	88.002	211.468806	
139BL-14	139BL-15	181 30 5	17 19 26	2.495	2.382	0	0.743	0	-131421.129	-69596.552	89.426	213.012732	
139BL-15	139BL-16	181 47 38	19 7 4	2.495	2.357	0	0.817	0	-131418.772	-69595.735	90.986	214.454002	
139BL-16	139BL-17	181 15 40	20 22 44	2.498	2.342	0	0.870	0	-131416.430	-69594.865	92.673	217.040166	
139BL-17	139BL-18	181 37 6	21 59 50	2.499	2.317	0	0.936	0	-131414.113	-69593.929	94.479	218.907843	
139BL-18	139BL-19	181 36 40	23 36 30	2.497	2.288	0	1.000	0	-131411.825	-69592.929	96.415	220.597520	
139BL-19	139BL-20	181 32 20	25 8 50	2.494	2.258	0	1.060	0	-131409.567	-69591.869	98.475	222.356550	
139BL-20	139BL-21	181 31 50	26 40 40	2.499	2.233	0	1.122	0	-131407.334	-69590.747	100.657	224.767081	
139BL-21	139BL-22	181 39 54	28 20 34	2.494	2.195	0	1.184	0	-131405.139	-69589.563	102.963	226.003785	
139BL-22	139BL-23	181 18 20	29 38 54	2.503	2.175	0	1.238	0	-131402.964	-69588.325	105.385	229.212375	
139BL-23	139BL-24	181 45 10	31 24 4	2.493	2.128	0	1.299	0	-131400.836	-69587.026	107.922	229.658016	

*** メンセキ ケイサン (ハ"イオウキヨホウ) ***

チクメイ ... ミヤコタチク トチクカクセイリシキ"ヨウ

ペリ NO... 139BL

NO.	NO.	ANGLE	AZIMUTH	LENGTH	DX	*	DY	*	X	Y	DMD	2A	カ-フ"メンセキ
139BL-24	139BL-25	181 40 18	33 4 22	2.498	2.093	0	1.363	0	-131398.743	-69585.663	110.584	231.452312	
139BL-25	139BL-26	181 38 55	34 43 17	2.497	2.052	0	1.422	0	-131396.691	-69584.241	113.369	232.633188	
139BL-26	139BL-27	181 19 59	36 3 16	2.501	2.022	0	1.472	0	-131394.669	-69582.769	116.263	235.083786	
139BL-27	139BL-28	181 30 1	37 33 17	2.494	1.977	0	1.520	0	-131392.692	-69581.249	119.255	235.767135	
139BL-28	139BL-29	181 28 53	39 2 10	2.498	1.940	0	1.573	0	-131390.752	-69579.676	122.348	237.355120	
139BL-29	139BL-30	181 36 45	40 38 55	2.498	1.895	0	1.627	0	-131388.857	-69578.049	125.548	237.913460	
139BL-30	139BL-31	181 40 44	42 19 39	2.502	1.850	0	1.685	0	-131387.007	-69576.364	128.860	238.391000	
139BL-31	139BL-32	181 41 55	44 1 34	2.496	1.795	0	1.735	0	-131385.212	-69574.629	132.280	237.442600	
139BL-32	139BL-33	132 21 20	356 22 54	5.007	4.997	0	-0.316	0	-131380.215	-69574.945	133.699	668.093903	
139BL-33	139BL-34	130 57 55	307 20 49	35.431	21.494	0	-28.167	0	-131358.721	-69603.112	105.216	2261.512704	
139BL-34	139BL-35	135 3 25	262 24 14	5.008	-0.662	0	-4.964	0	-131359.383	-69608.076	72.085	-47.720270	
139BL-35	139BL-36	134 52 56	217 17 10	21.251	-16.908	0	-12.874	0	-131376.291	-69620.950	54.247	-917.208276	
139BL-36	139BL-37	179 5 21	216 22 31	3.244	-2.612	0	-1.924	0	-131378.903	-69622.874	39.449	-103.040788	
139BL-37	139BL-38	178 3 23	214 25 54	3.300	-2.722	0	-1.866	0	-131381.625	-69624.740	35.659	-97.063798	
139BL-38	139BL-39	177 52 26	212 18 20	3.501	-2.959	0	-1.871	0	-131384.584	-69626.611	31.922	-94.457198	
139BL-39	139BL-40	177 40 30	209 58 50	3.498	-3.030	0	-1.748	0	-131387.614	-69628.359	28.303	-85.758090	
139BL-40	139BL-41	178 7 22	208 6 12	3.498	-3.086	0	-1.648	0	-131390.700	-69630.007	24.907	-76.863002	
139BL-41	139BL-42	177 44 39	205 50 51	3.500	-3.150	0	-1.526	0	-131393.850	-69631.533	21.733	-68.458950	
139BL-42	139BL-43	178 3 0	203 53 51	3.498	-3.198	0	-1.417	0	-131397.048	-69632.950	18.790	-60.090420	
139BL-43	139BL-44	177 34 43	201 28 34	3.499	-3.256	0	-1.281	0	-131400.304	-69634.231	16.092	-52.395552	
139BL-44	139BL-45	178 22 17	199 50 51	3.502	-3.294	0	-1.189	0	-131403.598	-69635.420	13.622	-44.870868	
139BL-45	139BL-46	177 21 57	197 12 48	3.501	-3.344	0	-1.036	0	-131406.942	-69636.456	11.397	-38.111568	
139BL-46	139BL-47	178 17 4	195 29 52	3.499	-3.372	0	-0.935	0	-131410.314	-69637.391	9.426	-31.784472	
139BL-47	139BL-48	178 1 36	193 31 28	3.502	-3.405	0	-0.819	0	-131413.719	-69638.210	7.672	-26.123160	

*** メンセキ ケイサン (ハイオウキヨホウ) ***

チクメイ ... ミヤコタチク トチクカクセイリシキヨウ

セイリ NO... 139BL

NO.	NO.	ANGLE	AZIMUTH	LENGTH	DX	*	DY	*	X	Y	DMD	2A	カ-フメンセキ
139BL-48	139BL-49	177 19 24	190 50 52	3.502	-3.439	0	-0.659	0	-131417.158	-69638.869	6.194	-21.301166	
139BL-49	139BL-50	178 18 56	189 9 48	3.498	-3.453	0	-0.557	0	-131420.611	-69639.426	4.978	-17.189034	
139BL-50	139BL-51	177 53 55	187 3 43	3.498	-3.471	0	-0.430	0	-131424.082	-69639.856	3.991	-13.852761	
139BL-51	139BL-52	177 45 27	184 49 10	3.499	-3.487	0	-0.294	0	-131427.569	-69640.150	3.267	-11.392029	
139BL-52	139BL- 1	178 14 23	183 3 33	55.709	-55.630	0	-2.973	0	-131483.199	-69643.123	0.000	0.000000	
TOTAL..	ソツカクスウ= 52	9000	0 0	328.115	0.000	0	0.000	0			ハイメンセキ=	10401.949294	
											1/2=	5200.97	+0.00
											メンセキ=	5200.97	

*** メンセキ ケイザン (ハイイウキヨホウ) ***

チクメイ ... ミヤコタチク トチクカクセイリヨキヨウ

セリ NO... 139BL(1)'

NO.	NO.	ANGLE	AZIMUTH	LENGTH	DX	*	DY	*	X	Y	DMD	2A	カ-フ'メンセキ
139BL-68	139BL-89		217 20 49						-131385.069	-69601.248			
139BL-89	139BL-67	90 0 0	127 20 49	20.620	-12.509	0	16.392	0	-131397.578	-69584.856	4.371	-54.676839	
139BL-67	139BL-26	87 22 28	34 43 17	1.079	0.887	0	0.615	0	-131396.691	-69584.241	21.378	18.962286	
139BL-26	139BL-27	181 19 59	36 3 16	2.501	2.022	0	1.472	0	-131394.669	-69582.769	23.465	47.446230	
139BL-27	139BL-28	181 30 1	37 33 17	2.494	1.977	0	1.520	0	-131392.692	-69581.249	26.457	52.305489	
139BL-28	139BL-29	181 28 53	39 2 10	2.498	1.940	0	1.573	0	-131390.752	-69579.676	29.550	57.327000	
139BL-29	139BL-30	181 36 45	40 38 55	2.498	1.895	0	1.627	0	-131388.857	-69578.049	32.750	62.061250	
139BL-30	139BL-31	181 40 44	42 19 39	2.502	1.850	0	1.685	0	-131387.007	-69576.364	36.062	66.714700	
139BL-31	139BL-32	181 41 55	44 1 34	2.496	1.795	0	1.735	0	-131385.212	-69574.629	39.482	70.870190	
139BL-32	139BL-33	132 21 20	356 22 54	5.007	4.997	0	-0.316	0	-131380.215	-69574.945	40.901	204.382297	
139BL-33	139BL-68	130 57 55	307 20 49	17.965	10.898	0	-14.282	0	-131369.317	-69589.227	26.303	286.650094	
139BL-68	139BL-89	90 0 0	217 20 49	19.815	-15.752	0	-12.021	0	-131385.069	-69601.248	0.000	0.000000	
TOTAL..	ソツカク入ウ= 11	1620 0 0		79.475	0.000	0	0.000	0			ハイイウキヨホウ=	812.042697	
											1/2=	406.02	+0.00
											メンセキ=	406.02	

*** メンセキ 計算 (ハイオウキヨホウ) ***

チクメイ ... ミヤコタチク トチクカクセイリシキヨウ

セリ NO... 139BL(2)

NO.	NO.	ANGLE	AZIMUTH	LENGTH	DX	*	DY	*	X	Y	DMD	2A	カーブメンセキ
139BL-89	139BL-88		217 20 49						-131392.991	-69607.293			
139BL-88	139BL-66	81 59 3	119 19 52	21.419	-10.492	0	18.673	0	-131403.483	-69588.620	12.628	-132.492976	
139BL-66	139BL-23	90 19 2	29 38 54	0.597	0.519	0	0.295	0	-131402.964	-69588.325	31.596	16.398324	
139BL-23	139BL-24	181 45 10	31 24 4	2.493	2.128	0	1.299	0	-131400.835	-69587.026	33.190	70.628320	
139BL-24	139BL-25	181 40 18	33 4 22	2.498	2.093	0	1.363	0	-131398.743	-69585.663	35.852	75.038236	
139BL-25	139BL-67	181 38 55	34 43 17	1.418	1.165	0	0.808	-1	-131397.578	-69584.856	38.022	44.295630	
139BL-67	139BL-89	92 37 32	307 20 49	20.620	12.509	0	-16.392	0	-131385.069	-69601.248	22.437	280.664433	
139BL-89	139BL-88	90 0 0	217 20 49	9.965	-7.922	0	-6.045	0	-131392.991	-69607.293	0.000	0.000000	
TOTAL...	ソツカクスク= 7	900 0 0		59.010	0.000	0	0.001	-1			ハイメンセキ=	354.531967	
											1/2=	177.26	+0.00
											メンセキ=	177.26	

*** メンセキ ケイサン (ハイオウキヨホウ) ***

チクメイ ... ミヤコタチク トチクカクセイリシキヨウ

セイリ NO... 139BL(3)

NO.	NO.	ANGLE	AZIMUTH	LENGTH	DX	*	DY	*	X	Y	DMD	2A	カ-フメンセキ
139BL-88	139BL-85		201 36 8						-131418.960	-69617.576			
139BL-85	139BL-65	83 47 2	105 23 10	20.754	-5.507	1	20.010	0	-131424.466	-69597.566	9.727	-53.556862	
139BL-65	139BL-14	90 26 11	15 49 21	0.993	0.955	0	0.271	0	-131423.511	-69597.295	30.008	28.657640	
139BL-14	139BL-15	181 30 5	17 19 26	2.495	2.382	0	0.743	0	-131421.129	-69596.552	31.022	73.894404	
139BL-15	139BL-16	181 47 38	19 7 4	2.495	2.357	0	0.817	0	-131418.772	-69595.735	32.582	76.795774	
139BL-16	139BL-17	181 15 40	20 22 44	2.498	2.342	0	0.870	0	-131416.430	-69594.865	34.269	80.257998	
139BL-17	139BL-18	181 37 6	21 59 50	2.499	2.317	0	0.936	0	-131414.113	-69593.929	36.075	83.585775	
139BL-18	139BL-19	181 36 40	23 36 30	2.497	2.288	0	1.000	0	-131411.825	-69592.929	38.011	86.969168	
139BL-19	139BL-20	181 32 20	25 8 50	2.494	2.258	0	1.060	0	-131409.567	-69591.869	40.071	90.480318	
139BL-20	139BL-21	181 31 50	26 40 40	2.499	2.233	0	1.122	0	-131407.334	-69590.747	42.253	94.350949	
139BL-21	139BL-22	181 39 54	28 20 34	2.494	2.195	0	1.184	0	-131405.139	-69589.563	44.559	97.807005	
139BL-22	139BL-66	181 18 20	29 38 54	1.906	1.656	0	0.943	0	-131403.483	-69588.620	46.686	77.312016	
139BL-66	139BL-88	89 40 58	299 19 52	21.419	10.492	0	-18.673	0	-131392.991	-69607.293	28.956	303.806352	
139BL-88	139BL-85	82 16 16	201 36 8	27.931	-25.969	0	-10.283	0	-131418.960	-69617.576	0.000	0.000000	
TOTAL..	ソツカクスウ= 13	1980	0 0	92.974	-0.001	1	0.000	0			ハイメンセキ=	1040.360537	
											1/2=	520.18	+0.00
											メンセキ=	520.18	

*** メンセキ ケイサン (ハイイウキヨホウ) ***

チクメイ ... ミヤコタチク トチクカクセイリシキヨウ

											セリ NO... 139BL(4)						
NO.	NO.	ANGLE			AZIMUTH			LENGTH	DX	*	DY	*	X	Y	DMD	2A	カーブメンセキ
139BL-85	139BL-84				190	38	57						-131432.574	-69620.136			
139BL-84	139BL-64	82	24	36	93	3	33	20.468	-1.092	-1	20.439	0	-131433.667	-69599.697	17.879	-19.541747	
139BL-64	139BL-10	96	35	57	9	39	30	0.447	0.441	0	0.075	0	-131433.226	-69599.622	38.393	16.931313	
139BL-10	139BL-11	181	27	30	11	7	0	2.500	2.453	0	0.482	0	-131430.773	-69599.140	38.950	95.544350	
139BL-11	139BL-12	181	35	38	12	42	38	2.495	2.434	0	0.549	0	-131428.339	-69598.591	39.981	97.313754	
139BL-12	139BL-13	181	31	12	14	13	50	2.502	2.425	0	0.615	0	-131425.914	-69597.976	41.145	99.776625	
139BL-13	139BL-65	181	35	31	15	49	21	1.505	1.448	0	0.410	0	-131424.466	-69597.566	42.170	61.062160	
139BL-65	139BL-85	89	33	49	285	23	10	20.754	5.507	-1	-20.010	0	-131418.960	-69617.576	22.570	124.270420	
139BL-85	139BL-84	85	15	47	190	38	57	13.852	-13.613	-1	-2.560	0	-131432.574	-69620.136	0.000	0.000000	
TOTAL..	ソツカクスウ=	8	1080	0	0			64.523	0.003	-3	0.000	0			ハイイウキヨホウ=	475.356875	
															1/2=	237.67	+0.00
															メンセキ=	237.67	

											セリ NO... 139BL(5)						
139BL-82	139BL-80				183	3	33						-131435.404	-69620.530			
139BL-80	139BL-63	90	0	0	93	3	33	20.400	-1.089	0	20.371	0	-131436.493	-69600.159	20.317	-22.125213	
139BL-63	139BL-9	95	16	7	8	19	40	0.814	0.805	0	0.118	0	-131435.688	-69600.041	40.806	32.848830	
139BL-9	139BL-64	181	19	50	9	39	30	2.050	2.021	0	0.344	0	-131433.667	-69599.697	41.268	83.402628	
139BL-64	139BL-84	83	24	3	273	3	33	20.468	1.092	1	-20.439	0	-131432.574	-69620.136	21.173	23.142089	
139BL-84	139BL-82	97	35	24	190	38	57	1.841	-1.809	0	-0.340	0	-131434.383	-69620.476	0.394	-0.712746	
139BL-82	139BL-80	172	24	36	183	3	33	1.022	-1.021	0	-0.055	1	-131435.404	-69620.530	0.000	0.000000	
TOTAL..	ソツカクスウ=	6	720	0	0			46.595	-0.001	1	-0.001	1			ハイイウキヨホウ=	116.555588	
															1/2=	58.27	+0.00
															メンセキ=	58.27	

*** メンセキ ケイサン (ハイイウキヨホウ) ***

チクメイ ... ミヤコタチク トチクカクセイリシキヨウ

セリ NO... 139BL(6)

NO.	NO.	ANGLE	AZIMUTH	LENGTH	DX	*	DY	*	X	Y	DMD	2A	カ-フメンセキ
139BL-80	139BL-79		183 3 33						-131460.235	-69621.857			
139BL-79	139BL-62	90 0 0	93 3 33	20.007	-1.068	0	19.978	0	-131461.303	-69601.879	18.651	-19.919268	
139BL-62	139BL-5	89 57 52	3 1 25	16.416	16.393	0	0.866	0	-131444.910	-69601.013	39.495	647.441535	
139BL-5	139BL-6	180 29 33	3 30 58	2.136	2.132	0	0.131	0	-131442.778	-69600.882	40.492	86.328944	
139BL-6	139BL-7	181 46 3	5 17 1	2.150	2.141	0	0.198	0	-131440.637	-69600.684	40.821	87.397761	
139BL-7	139BL-8	181 11 28	6 28 29	2.492	2.476	0	0.281	0	-131438.161	-69600.403	41.300	102.258800	
139BL-8	139BL-63	181 51 11	8 19 40	1.685	1.667	1	0.244	0	-131436.493	-69600.159	41.825	69.764100	
139BL-63	139BL-80	84 43 53	273 3 33	20.400	1.089	0	-20.371	0	-131435.404	-69620.530	21.698	23.629122	
139BL-80	139BL-79	90 0 0	183 3 33	24.866	-24.831	0	-1.327	0	-131460.235	-69621.857	0.000	0.000000	
TOTAL..	ソツカクスウ= 8	1080 0 0		90.152	-0.001	1	0.000	0			ハイイウキヨホウ=	996.900994	
											1/2=	498.45	+0.00
											メンセキ=	498.45	

セリ NO... 139BL(7)

139BL-79	139BL-61		183 3 33						-131487.813	-69623.330			
139BL-61	139BL-3	89 58 47	93 2 20	16.465	-0.873	0	16.442	0	-131488.686	-69606.888	14.969	-13.067937	
139BL-3	139BL-4	135 4 2	48 6 22	5.024	3.355	0	3.740	0	-131485.331	-69603.148	35.151	117.931605	
139BL-4	139BL-62	134 55 3	3 1 25	24.061	24.028	0	1.269	0	-131461.303	-69601.879	40.160	964.964480	
139BL-62	139BL-79	90 2 8	273 3 33	20.007	1.068	0	-19.978	0	-131460.235	-69621.857	21.451	22.909668	
139BL-79	139BL-61	90 0 0	183 3 33	27.617	-27.578	0	-1.474	1	-131487.813	-69623.330	0.000	0.000000	
TOTAL..	ソツカクスウ= 5	540 0 0		93.174	0.000	0	-0.001	1			ハイイウキヨホウ=	1092.737816	
											1/2=	546.36	+0.00
											メンセキ=	546.36	

*** メンセキ ケイサン (ハイオウキヨホウ) ***

チクメイ ... ミヤコタチク トチクカクセイリシキヨウ

レイ NO... 139BL(8)

NO.	NO.	ANGLE	AZIMUTH	LENGTH	DX	*	DY	*	X	Y	DMD	2A	カ-フメンセキ
139BL-77	139BL-1		183 3 33						-131483.199	-69643.123			
139BL-1	139BL-2	134 59 9	138 2 42	5.032	-3.742	0	3.364	0	-131486.941	-69639.759	2.694	-10.080948	
139BL-2	139BL-61	134 59 3.8	93 2 20	16.452	-0.872	0	16.429	0	-131487.813	-69623.330	22.487	-19.608664	
139BL-61	139BL-78	90 1 13	3 3 33	16.116	16.093	0	0.860	0	-131471.720	-69622.470	39.776	640.115168	
139BL-78	139BL-77	90 0 0	273 3 33	20.011	1.068	0	-19.982	-1	-131470.652	-69642.453	20.653	22.057404	
139BL-77	139BL-1	90 0 0	183 3 33	12.565	-12.547	0	-0.671	1	-131483.199	-69643.123	0.000	0.000000	
TOTAL..	ソツカクスウ= 5	540 0 0		70.176	0.000	0	0.000	0			ハイメンセキ=	632.482960	
											1/2=	316.24	+0.00
											メンセキ=	316.24	

レイ NO... 139BL(9)

139BL-76	139BL-77		183 3 33						-131470.652	-69642.453			
139BL-77	139BL-78	90 0 0	93 3 33	20.011	-1.068	0	19.982	1	-131471.720	-69622.470	19.369	-20.686092	
139BL-78	139BL-79	90 0 0	3 3 33	11.501	11.485	0	0.614	-1	-131460.235	-69621.857	39.965	458.998025	
139BL-79	139BL-76	90 0 0	273 3 33	20.011	1.068	0	-19.982	0	-131459.167	-69641.839	20.596	21.996528	
139BL-76	139BL-77	90 0 0	183 3 33	11.501	-11.485	0	-0.614	0	-131470.652	-69642.453	0.000	0.000000	
TOTAL..	ソツカクスウ= 4	360 0 0		63.024	0.000	0	0.000	0			ハイメンセキ=	460.308461	
											1/2=	230.15	+0.00
											メンセキ=	230.15	

*** ムンセキ ケイサン (ハイイウキヨホウ) ***

チクメイ ... ミヤコタチク トチクカクセイリシキヨウ

セリ NO... 139BL(10)

NO.	NO.	ANGLE	AZIMUTH	LENGTH	DX	*	DY	*	X	Y	DMD	2A	カーブムンセキ
139BL-75	139BL-76		183 3 33						-131459.167	-69641.839			
139BL-76	139BL-79	90 0 0	93 3 33	20.011	-1.068	0	19.982	0	-131460.235	-69621.857	18.616	-19.881888	
139BL-79	139BL-81	90 0 0	3 3 33	25.586	25.550	0	1.365	0	-131434.685	-69620.492	39.963	1021.054650	
139BL-81	139BL-75	90 0 0	273 3 33	20.009	1.068	-1	-19.980	-1	-131433.618	-69640.473	21.347	22.777249	
139BL-75	139BL-76	90 0 0	183 3 33	25.586	-25.550	1	-1.365	-1	-131459.167	-69641.839	0.000	0.000000	
TOTAL..	ソツカク入ウ= 4	360 0 0		91.192	0.000	0	0.002	-2			ハイイムンセキ=	1023.950011	
											1/2=	511.97	+0.00
											ムンセキ=	511.97	

セリ NO... 139BL(11)

139BL-74	139BL-75		183 3 33						-131433.618	-69640.473			
139BL-75	139BL-81	90 0 0	93 3 33	20.009	-1.068	1	19.980	1	-131434.685	-69620.492	19.965	-21.302655	
139BL-81	139BL-82	90 0 0	3 3 33	0.302	0.302	0	0.016	0	-131434.383	-69620.476	39.962	12.068524	
139BL-82	139BL-74	90 0 0	273 3 33	20.009	1.068	-1	-19.980	-1	-131433.316	-69640.457	19.997	21.336799	
139BL-74	139BL-75	90 0 0	183 3 33	0.302	-0.302	0	-0.016	0	-131433.618	-69640.473	0.000	0.000000	
TOTAL..	ソツカク入ウ= 4	360 0 0		40.622	0.000	0	0.000	0			ハイイムンセキ=	12.102668	
											1/2=	6.05	+0.00
											ムンセキ=	6.05	

*** メンセキ ケイサン (ハイオウキヨホウ) ***

チクメイ ... ミヤコタチク トチクカクセイリシキヨウ

セリ NO... 139BL(12)

NO.	NO.	ANGLE	AZIMUTH	LENGTH	DX	*	DY	*	X	Y	DMD	2A	カ-フメンセキ
139BL-73	139BL-74		183 3 33						-131433.316	-69640.457			
139BL-74	139BL-82	90 0 0	93 3 33	20.009	-1.068	1	19.980	1	-131434.383	-69620.476	19.903	-21.236501	
139BL-82	139BL-83	97 35 24	10 38 57	1.468	1.443	0	0.271	0	-131432.940	-69620.205	40.155	57.943665	
139BL-83	139BL-73	82 24 36	273 3 33	20.203	1.078	0	-20.174	0	-131431.862	-69640.379	20.252	21.831656	
139BL-73	139BL-74	90 0 0	183 3 33	1.456	-1.454	0	-0.078	0	-131433.316	-69640.457	0.000	0.000000	
TOTAL..	ソツカクスウ= 4	360 0 0		43.136	-0.001	1	-0.001	1			ハイメンセキ=	58.538820	
											1/2=	29.26	+0.00
											メンセキ=	29.26	

セリ NO... 139BL(13)

139BL-52	139BL-73		183 3 33						-131431.862	-69640.379			
139BL-73	139BL-83	90 0 0	93 3 33	20.203	-1.078	0	20.174	0	-131432.940	-69620.205	19.945	-21.500710	
139BL-83	139BL-85	97 35 24	10 38 57	14.225	13.980	0	2.629	0	-131418.960	-69617.576	42.748	597.617040	
139BL-85	139BL-72	94 44 13	285 23 10	21.298	5.651	0	-20.535	0	-131413.309	-69638.111	24.842	140.382142	
139BL-72	139BL-48	88 8 18	193 31 28	0.422	-0.410	0	-0.099	0	-131413.719	-69638.210	4.208	-1.725280	
139BL-48	139BL-49	177 19 24	190 50 52	3.502	-3.439	0	-0.659	0	-131417.158	-69638.869	3.450	-11.864550	
139BL-49	139BL-50	178 18 56	189 9 48	3.498	-3.453	0	-0.557	0	-131420.611	-69639.426	2.234	-7.714002	
139BL-50	139BL-51	177 53 55	187 3 43	3.498	-3.471	0	-0.430	0	-131424.082	-69639.856	1.247	-4.328337	
139BL-51	139BL-52	177 45 27	184 49 10	3.499	-3.487	0	-0.294	0	-131427.569	-69640.150	0.523	-1.823701	
139BL-52	139BL-73	178 14 23	183 3 33	4.299	-4.293	0	-0.229	0	-131431.862	-69640.379	0.000	0.000000	
TOTAL..	ソツカクスウ= 9	1260 0 0		74.444	0.000	0	0.000	0			ハイメンセキ=	689.042602	
											1/2=	344.52	+0.00
											メンセキ=	344.52	

*** メンセキ ケイサン (ハイオウキヨホウ) ***

チクメイ ... ミヤコタチク トチクカクセイリシキヨウ

セリ NO... 139BL(14)

NO.	NO.	ANGLE	AZIMUTH	LENGTH	DX	*	DY	*	X	Y	DMD	2A	カーブメンセキ
139BL-47	139BL-72		193 31 28						-131413.309	-69638.111			
139BL-72	139BL-85	91 51 42	105 23 10	21.298	-5.651	0	20.535	0	-131418.960	-69617.576	19.815	-111.974565	
139BL-85	139BL-86	96 12 58	21 36 8	7.543	7.013	0	2.777	0	-131411.947	-69614.799	43.127	302.449651	
139BL-86	139BL-71	90 0 0	291 36 8	22.233	8.185	0	-20.671	-1	-131403.762	-69635.471	25.232	206.523920	
139BL-71	139BL-46	85 36 40	197 12 48	3.329	-3.180	0	-0.985	0	-131406.942	-69636.456	3.575	-11.368500	
139BL-46	139BL-47	178 17 4	195 29 52	3.499	-3.372	0	-0.935	0	-131410.314	-69637.391	1.655	-5.580660	
139BL-47	139BL-72	178 1 36	193 31 28	3.080	-2.995	0	-0.720	0	-131413.309	-69638.111	0.000	0.000000	
TOTAL..	ソツカクスウ= 6	720 0 0		60.982	0.000	0	0.001	-1			ハイメンセキ=	380.049846	
											1/2=	190.02	+0.00
											メンセキ=	190.02	

セリ NO... 139BL(15)

139BL-45	139BL-71		197 12 48						-131403.762	-69635.471			
139BL-71	139BL-86	94 23 20	111 36 8	22.233	-8.185	0	20.671	1	-131411.947	-69614.799	20.621	-168.782885	
139BL-86	139BL-87	90 0 0	21 36 8	16.527	15.366	0	6.085	-1	-131396.581	-69608.715	47.377	727.994982	
139BL-87	139BL-70	90 0 0	291 36 8	21.692	7.986	0	-20.168	0	-131388.595	-69628.883	33.293	265.877898	
139BL-70	139BL-41	96 30 4	208 6 12	2.386	-2.105	0	-1.124	0	-131390.700	-69630.007	12.001	-25.262105	
139BL-41	139BL-42	177 44 39	205 50 51	3.500	-3.150	0	-1.526	0	-131393.850	-69631.533	9.351	-29.455650	
139BL-42	139BL-43	178 3 0	203 53 51	3.498	-3.198	0	-1.417	0	-131397.048	-69632.950	6.408	-20.492784	
139BL-43	139BL-44	177 34 43	201 28 34	3.499	-3.256	0	-1.281	0	-131400.304	-69634.231	3.710	-12.079760	
139BL-44	139BL-45	178 22 17	199 50 51	3.502	-3.294	0	-1.189	0	-131403.598	-69635.420	1.240	-4.084560	
139BL-45	139BL-71	177 21 57	197 12 48	0.172	-0.164	0	-0.051	0	-131403.762	-69635.471	0.000	0.000000	
TOTAL..	ソツカクスウ= 9	1260 0 0		77.009	0.000	0	0.000	0			ハイメンセキ=	733.715136	
											1/2=	366.85	+0.00
											メンセキ=	366.85	

*** メンセキ ケイサン (ハイオウキヨホウ) ***

チクメイ ... ミヤコタチク トチクカクセイリシキヨウ

セリ NO... 139BL(16)✓

NO.	NO.	ANGLE	AZIMUTH	LENGTH	DX	*	DY	*	X	Y	DMD	2A	カーブメンセキ
139BL-40	139BL-70✓		208 6 12						-131388.595	-69628.883			
139BL-70	139BL-87✓	83 29 56	111 36 8✓	21.692✓	-7.986	0	20.168	0	-131396.581	-69608.715	19.644	-156.876984	
139BL-87	139BL-88✓	90 0 0	21 36 8✓	3.861✓	3.590	0	1.421	1	-131392.991	-69607.293	41.234	148.030060	
139BL-88	139BL-69✓	97 43 44	299 19 52✓	20.849✓	10.213	0	-18.176	0	-131382.778	-69625.469	24.480	250.014240	
139BL-69	139BL-39✓	92 58 28	212 18 20✓	2.136✓	-1.805	-1	-1.142	0	-131384.584	-69626.611	5.162	-9.322572	
139BL-39	139BL-40✓	177 40 30	209 58 50✓	3.498✓	-3.030	0	-1.748	0	-131387.614	-69628.359	2.272	-6.884160	
139BL-40	139BL-70✓	178 7 22	208 6 12✓	1.112✓	-0.981	0	-0.524	0	-131388.595	-69628.883	0.000	0.000000	
TOTAL...	ソツカクスク= 6	720	0 0	53.148	0.001	-1✓	-0.001	1✓			ハイメンセキ=	224.960584	
											1/2=	112.48	+0.00
											メンセキ=	112.48✓	

セリ NO... 139BL(17)✓

139BL-38	139BL-69✓		212 18 20						-131382.778	-69625.469			
139BL-69	139BL-88✓	87 1 32	119 19 52✓	20.849✓	-10.213	0	18.176	0	-131392.991	-69607.293	17.447	-178.186211	
139BL-88	139BL-68✓	98 0 57	37 20 49✓	29.780✓	23.674	0	18.066	0	-131369.317	-69589.227	53.689	1271.033386	
139BL-68	139BL-34✓	90 0 0	307 20 49✓	17.466✓	10.596	0	-13.885	0	-131358.721	-69603.112	57.870	613.190520	
139BL-34	139BL-35✓	135 3 25	262 24 14✓	5.008✓	-0.662	0	-4.964	0	-131359.383	-69608.076	39.021	-25.831902	
139BL-35	139BL-36✓	134 52 56	217 17 10✓	21.251✓	-16.908	0	-12.874	0	-131376.291	-69620.950	21.183	-358.162164	
139BL-36	139BL-37✓	179 5 21	216 22 31✓	3.244✓	-2.612	0	-1.924	0	-131378.903	-69622.874	6.385	-16.677620	
139BL-37	139BL-38✓	178 3 23	214 25 54✓	3.300✓	-2.722	0	-1.866	0	-131381.625	-69624.740	2.595	-7.063590	
139BL-38	139BL-69✓	177 52 26	212 18 20✓	1.365✓	-1.154	1	-0.730	1	-131382.778	-69625.469	0.000	0.000000	
TOTAL...	ソツカクスク= 8	1080	0 0	102.263	-0.001	1✓	-0.001	1✓			ハイメンセキ=	1298.302419	
											1/2=	649.15	+0.00
											メンセキ=	649.15✓	

*** ケツコウ トラハ入 ***

チクメイ ... ミヤコタチク トチクカクセイリシキヨウ

NO.	NO.	ANGLE	*	AZIMUTH	LENGTH	DX	*	DY	*	X	Y	NO.
	139BL- 2 ✓									-131486.941	-69639.759	139BL- 2
139BL- 2	139BL-61 ✓			93 2 20 ✓	16.452 ✓	-0.872	0	16.429	0	-131487.813	-69623.330	139BL-61
139BL-61	139BL- 3 ✓	180 0 0		93 2 20 ✓	16.465 ✓	-0.873	0	16.442	0	-131488.686	-69606.888	139BL- 3
	TOTAL..	180 0 0			32.917 ✓	-1.745	0 ✓	32.871	0 ✓			
	139BL- 4 ✓									-131485.331	-69603.148	139BL- 4
139BL- 4	139BL-62 ✓			3 1 25 ✓	24.061 ✓	24.028	0	1.269	0	-131461.303	-69601.879	139BL-62
139BL-62	139BL- 5 ✓	180 0 0		3 1 25 ✓	16.416 ✓	16.393	0	0.866	0	-131444.910	-69601.013	139BL- 5
	TOTAL..	180 0 0			40.477 ✓	40.421	0 ✓	2.135	0 ✓			
	139BL- 8 ✓									-131438.161	-69600.403	139BL- 8
139BL- 8	139BL-63 ✓			8 19 40 ✓	1.685 ✓	1.667	1	0.244	0	-131436.493	-69600.159	139BL-63
139BL-63	139BL- 9 ✓	180 0 0		8 19 40 ✓	0.814 ✓	0.805	0	0.118	0	-131435.688	-69600.041	139BL- 9
	TOTAL..	180 0 0			2.499 ✓	2.472	1 ✓	0.362	0 ✓			
	139BL- 9 ✓									-131435.688	-69600.041	139BL- 9
139BL- 9	139BL-64 ✓			9 39 30 ✓	2.050 ✓	2.021	0	0.344	0	-131433.667	-69599.697	139BL-64
139BL-64	139BL-10 ✓	180 0 0		9 39 30 ✓	0.447 ✓	0.441	0	0.075	0	-131433.226	-69599.622	139BL-10
	TOTAL..	180 0 0			2.497 ✓	2.462	0 ✓	0.419	0 ✓			
	139BL-13 ✓									-131425.914	-69597.976	139BL-13
139BL-13	139BL-65 ✓			15 49 21 ✓	1.505 ✓	1.448	0	0.410	0	-131424.466	-69597.566	139BL-65
139BL-65	139BL-14 ✓	180 0 0		15 49 21 ✓	0.993 ✓	0.955	0	0.271	0	-131423.511	-69597.295	139BL-14
	TOTAL..	180 0 0			2.498 ✓	2.403	0 ✓	0.681	0 ✓			

チクメイ ... ミヤコタチク トチクカクセイリシキヨウ

NO.	NO.	ANGLE *	AZIMUTH	LENGTH	DX	*	DY	*	X	Y	NO.
	139BL-22 ✓								-131405.139	-69589.563	139BL-22
139BL-22	139BL-66 ✓		29 38 54 ✓	1.906 ✓	1.656	0	0.943	0	-131403.483	-69588.620	139BL-66
139BL-66	139BL-23 ✓	180 0 0	29 38 54 ✓	0.597 ✓	0.519	0	0.295	0	-131402.964	-69588.325	139BL-23
	TOTAL...	180 0 0		2.503 ✓	2.175	0 ✓	1.238	0 ✓			
	139BL-25 ✓								-131398.743	-69585.663	139BL-25
139BL-25	139BL-67 ✓		34 43 17 ✓	1.418 ✓	1.165	0	0.808	-1	-131397.578	-69584.856	139BL-67
139BL-67	139BL-26 ✓	180 0 0	34 43 17 ✓	1.079 ✓	0.887	0	0.615	0	-131396.691	-69584.241	139BL-26
	TOTAL...	180 0 0		2.497 ✓	2.052	0 ✓	1.423	-1 ✓			
	139BL-33 ✓								-131380.215	-69574.945	139BL-33
139BL-33	139BL-68 ✓		307 20 49 ✓	17.965 ✓	10.898	0	-14.282	0	-131369.317	-69589.227	139BL-68
139BL-68	139BL-34 ✓	180 0 0	307 20 49 ✓	17.466 ✓	10.596	0	-13.885	0	-131358.721	-69603.112	139BL-34
	TOTAL...	180 0 0		35.431 ✓	21.494	0 ✓	-28.167	0 ✓			
	139BL-38 ✓								-131381.625	-69624.740	139BL-38
139BL-38	139BL-69 ✓		212 18 20 ✓	1.365 ✓	-1.154	1	-0.730	1	-131382.778	-69625.469	139BL-69
139BL-69	139BL-39 ✓	180 0 0	212 18 20 ✓	2.136 ✓	-1.805	-1	-1.142	0	-131384.584	-69626.611	139BL-39
	TOTAL...	180 0 0		3.501 ✓	-2.959	0 ✓	-1.872	1 ✓			
	139BL-40 ✓								-131387.614	-69628.359	139BL-40
139BL-40	139BL-70 ✓		208 6 12 ✓	1.112 ✓	-0.981	0	-0.524	0	-131388.595	-69628.883	139BL-70
139BL-70	139BL-41 ✓	180 0 0	208 6 12 ✓	2.386 ✓	-2.105	0	-1.124	0	-131390.700	-69630.007	139BL-41
	TOTAL...	180 0 0		3.498 ✓	-3.086	0 ✓	-1.648	0 ✓			

*** ケツコウ トラハ"-ス ***

チクメイ ... ミヤコタ"チク トチクカクセイリシ"キ"ヨウ.

NO.	NO.	ANGLE	*	AZIMUTH	LENGTH	DX	*	DY	*	X	Y	NO.
	139BL-45 ✓									-131403.598	-69635.420	139BL-45
139BL-45	139BL-71 ✓			197 12 48 ✓	0.172 ✓	-0.164	0	-0.051	0	-131403.762	-69635.471	139BL-71
139BL-71	139BL-46 ✓	180 0 0		197 12 48 ✓	3.329 ✓	-3.180	0	-0.985	0	-131406.942	-69636.456	139BL-46
	TOTAL..	180 0 0			3.501 ✓	-3.344	0 ✓	-1.036	0 ✓			
	139BL-47 ✓									-131410.314	-69637.391	139BL-47
139BL-47	139BL-72 ✓			193 31 28 ✓	3.080 ✓	-2.995	0	-0.720	0	-131413.309	-69638.111	139BL-72
139BL-72	139BL-48 ✓	180 0 0		193 31 28 ✓	0.422 ✓	-0.410	0	-0.099	0	-131413.719	-69638.210	139BL-48
	TOTAL..	180 0 0			3.502 ✓	-3.405	0 ✓	-0.819	0 ✓			
	139BL-52 ✓									-131427.569	-69640.150	139BL-52
139BL-52	139BL-73 ✓			183 3 33 ✓	4.299 ✓	-4.293	0	-0.229	0	-131431.862	-69640.379	139BL-73
139BL-73	139BL-74 ✓	180 0 0		183 3 33 ✓	1.456 ✓	-1.454	0	-0.078	0	-131433.316	-69640.457	139BL-74
139BL-74	139BL-75 ✓	180 0 0		183 3 33 ✓	0.302 ✓	-0.302	0	-0.016	0	-131433.618	-69640.473	139BL-75
139BL-75	139BL-76 ✓	180 0 0		183 3 33 ✓	25.586 ✓	-25.550	1	-1.365	-1	-131459.167	-69641.839	139BL-76
139BL-76	139BL-77 ✓	180 0 0		183 3 33 ✓	11.501 ✓	-11.485	0	-0.614	0	-131470.652	-69642.453	139BL-77
139BL-77	139BL- 1 ✓	180 0 0		183 3 33 ✓	12.565 ✓	-12.547	0	-0.671	1	-131483.199	-69643.123	139BL- 1
	TOTAL..	900 0 0			55.709 ✓	-55.631	1 ✓	-2.973	0 ✓			
	139BL-68 ✓									-131369.317	-69589.227	139BL-68
139BL-68	139BL-89 ✓			217 20 49 ✓	19.815 ✓	-15.752	0	-12.021	0	-131385.069	-69601.248	139BL-89
139BL-89	139BL-88 ✓	180 0 0		217 20 49 ✓	9.965 ✓	-7.922	0	-6.045	0	-131392.991	-69607.293	139BL-88
	TOTAL..	180 0 0			29.780 ✓	-23.674	0 ✓	-18.066	0 ✓			

*** ケツコウ トラハス ***

チクメイ ... ミヤコタチク トチクカクセイリシキヨウ

NO.	NO.	ANGLE	*	AZIMUTH	LENGTH	DX	*	DY	*	X	Y	NO.
	139BL-88 ✓									-131392.991	-69607.293	139BL-88
139BL-88	139BL-87 ✓			201 36 8 ✓	3.861 ✓	-3.590	0	-1.421	-1	-131396.581	-69608.715	139BL-87
139BL-87	139BL-86 ✓	180 0 0		201 36 8 ✓	16.527 ✓	-15.366	0	-6.085	1	-131411.947	-69614.799	139BL-86
139BL-86	139BL-85 ✓	180 0 0		201 36 8 ✓	7.543 ✓	-7.013	0	-2.777	0	-131418.960	-69617.576	139BL-85
	TOTAL..	360 0 0			27.931 ✓	-25.969	0	-10.283	0			
	139BL-85 ✓									-131418.960	-69617.576	139BL-85
139BL-85	139BL-84 ✓			190 38 57 ✓	13.852 ✓	-13.613	-1	-2.560	0	-131432.574	-69620.136	139BL-84
139BL-84	139BL-82 ✓	180 0 0		190 38 57 ✓	1.841 ✓	-1.809	0	-0.340	0	-131434.383	-69620.476	139BL-82
	TOTAL..	180 0 0			15.693 ✓	-15.422	-1	-2.900	0			
	139BL-85 ✓									-131418.960	-69617.576	139BL-85
139BL-85	139BL-83 ✓			190 38 57 ✓	14.225 ✓	-13.980	0	-2.629	0	-131432.940	-69620.205	139BL-83
139BL-83	139BL-82 ✓	180 0 0		190 38 57 ✓	1.468 ✓	-1.443	0	-0.271	0	-131434.383	-69620.476	139BL-82
	TOTAL..	180 0 0			15.693 ✓	-15.423	0	-2.900	0			
	139BL-85 ✓									-131418.960	-69617.576	139BL-85
139BL-85	139BL-84 ✓			190 38 57 ✓	13.852 ✓	-13.613	-1	-2.560	0	-131432.574	-69620.136	139BL-84
139BL-84	139BL-83 ✓	180 0 0		190 38 57 ✓	0.373 ✓	-0.367	1	-0.069	0	-131432.940	-69620.205	139BL-83
139BL-83	139BL-82 ✓	180 0 0		190 38 57 ✓	1.468 ✓	-1.443	0	-0.271	0	-131434.383	-69620.476	139BL-82
	TOTAL..	360 0 0			15.693 ✓	-15.423	0	-2.900	0			
	139BL-82 ✓									-131434.383	-69620.476	139BL-82
139BL-82	139BL-80 ✓			183 3 33 ✓	1.022 ✓	-1.021	0	-0.055	1	-131435.404	-69620.530	139BL-80

*** ケツコウ トラハス ***

チクメイ ... ミヤコダチク トチクカクセイリシキヨウ

NO.	NO.	ANGLE	*	AZIMUTH	LENGTH	DX	*	DY	*	X	Y	NO.
139BL-80	139BL-79	180 0 0		183 3 33	24.866	-24.831	0	-1.327	0	-131460.235	-69621.857	139BL-79
139BL-79	139BL-61	180 0 0		183 3 33	27.617	-27.578	0	-1.474	1	-131487.813	-69623.330	139BL-61
	TOTAL..	360 0 0			53.505	-53.430	0	-2.856	2			
	139BL-82									-131434.383	-69620.476	139BL-82
139BL-82	139BL-81			183 3 33	0.302	-0.302	0	-0.016	0	-131434.685	-69620.492	139BL-81
139BL-81	139BL-79	180 0 0		183 3 33	25.586	-25.550	0	-1.365	0	-131460.235	-69621.857	139BL-79
139BL-79	139BL-78	180 0 0		183 3 33	11.501	-11.485	0	-0.614	1	-131471.720	-69622.470	139BL-78
139BL-78	139BL-61	180 0 0		183 3 33	16.116	-16.093	0	-0.860	0	-131487.813	-69623.330	139BL-61
	TOTAL..	540 0 0			53.505	-53.430	0	-2.855	1			
	139BL-82									-131434.383	-69620.476	139BL-82
139BL-82	139BL-81			183 3 33	0.302	-0.302	0	-0.016	0	-131434.685	-69620.492	139BL-81
139BL-81	139BL-80	180 0 0		183 3 33	0.720	-0.719	0	-0.038	0	-131435.404	-69620.530	139BL-80
139BL-80	139BL-79	180 0 0		183 3 33	24.866	-24.831	0	-1.327	0	-131460.235	-69621.857	139BL-79
139BL-79	139BL-78	180 0 0		183 3 33	11.501	-11.485	0	-0.614	1	-131471.720	-69622.470	139BL-78
139BL-78	139BL-61	180 0 0		183 3 33	16.116	-16.093	0	-0.860	0	-131487.813	-69623.330	139BL-61
	TOTAL..	720 0 0			53.505	-53.430	0	-2.855	1			
	139BL-69									-131382.778	-69625.469	139BL-69
139BL-69	139BL-88			119 19 52	20.849	-10.213	0	18.176	0	-131392.991	-69607.293	139BL-88
139BL-88	139BL-66	180 0 0		119 19 52	21.419	-10.492	0	18.673	0	-131403.483	-69588.620	139BL-66
	TOTAL..	180 0 0			42.268	-20.705	0	36.849	0			

*** ケツコウ トラハス ***

チクメイ ... ミヤコタチク トチクカクセイリシキヨウ

NO.	NO.	ANGLE	*	AZIMUTH	LENGTH	DX	*	DY	*	X	Y	NO.
	139BL-72									-131413.309	-69638.111	139BL-72
139BL-72	139BL-85			105 23 10	21.298	-5.651	0	20.535	0	-131418.960	-69617.576	139BL-85
139BL-85	139BL-65	180 0 0		105 23 10	20.754	-5.507	1	20.010	0	-131424.466	-69597.566	139BL-65
	TOTAL...	180 0 0			42.052	-11.158	1	40.545	0			
	139BL-76									-131459.167	-69641.839	139BL-76
139BL-76	139BL-79			93 3 33	20.011	-1.068	0	19.982	0	-131460.235	-69621.857	139BL-79
139BL-79	139BL-62	180 0 0		93 3 33	20.007	-1.068	0	19.978	0	-131461.303	-69601.879	139BL-62
	TOTAL...	180 0 0			40.018	-2.136	0	39.960	0			