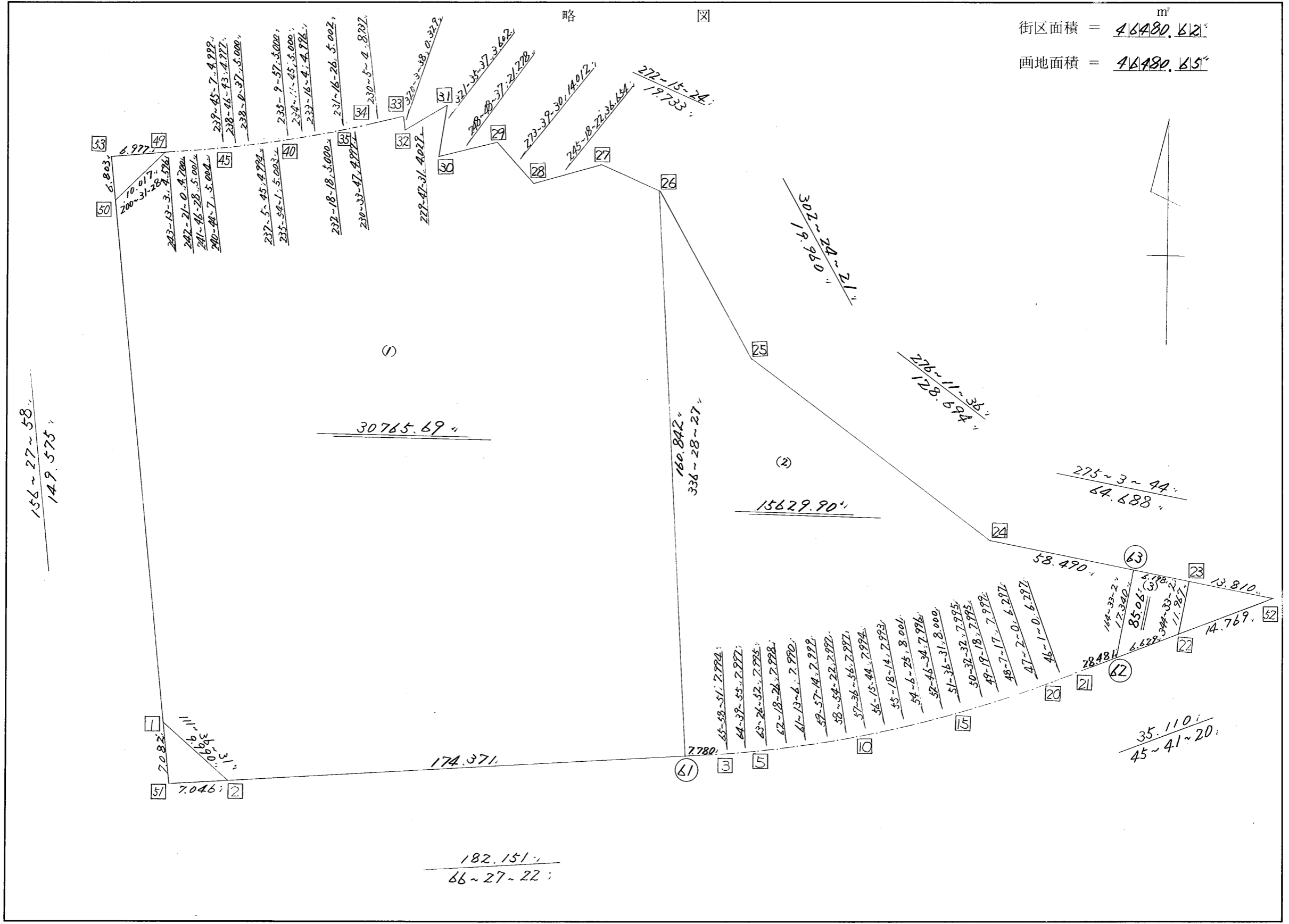


街廓原子一覽表用紙

(13° BL)



街区面積 = 46480.62^m
 画地面積 = 46480.65^m

156 ~ 27 ~ 58
 149.575

30765.69

15629.90

160.842
 336 ~ 28 ~ 27

275 ~ 3 ~ 44
 64.688

35.110
 45 ~ 41 ~ 20

182.151
 66 ~ 27 ~ 22

街区点番号 1 ~ 53
 筆界点番号 61 ~ 63
 画地番号 (1) ~ (3)

不二測量株式会社

*** メンセキ ケイサン (ハイオウキヨホウ) ***

チクメイ ... ミヤコタチク トチクカクセイリシキヨウ

セイリ NO... 13BL ✓

NO.	NO.	ANGLE	AZIMUTH	LENGTH	DX	*	DY	*	X	Y	DMD	2A	カ-フ"メンセキ
13BL-50	13BL- 1 ✓		156 27 58						-130786.830	-69258.041			
13BL- 1	13BL- 2 ✓	135 8 33	111 36 31 ✓	9.990 ✓	-3.679	0	9.288	0	-130790.509	-69248.753	69.012	-253.895148	
13BL- 2	13BL- 3 ✓	134 50 51	66 27 22 ✓	182.151 ✓	72.760	1	166.988	0	-130717.748	-69081.765	245.288	17847.400168	
13BL- 3	13BL- 4 ✓	179 31 29	65 58 51 ✓	7.994 ✓	3.254	0	7.302	0	-130714.494	-69074.463	419.578	1365.306812	
13BL- 4	13BL- 5 ✓	178 41 4	64 39 55 ✓	7.997 ✓	3.422	0	7.228	0	-130711.072	-69067.235	434.108	1485.517576	
13BL- 5	13BL- 6 ✓	178 46 57	63 26 52 ✓	7.995 ✓	3.574	0	7.152	0	-130707.498	-69060.083	448.488	1602.896112	
13BL- 6	13BL- 7 ✓	178 51 34	62 18 26 ✓	7.998 ✓	3.717	0	7.082	0	-130703.781	-69053.001	462.722	1719.937674	
13BL- 7	13BL- 8 ✓	178 54 40	61 13 6 ✓	7.990 ✓	3.847	0	7.003	0	-130699.934	-69045.998	476.807	1834.276529	
13BL- 8	13BL- 9 ✓	178 44 8	59 57 14 ✓	7.999 ✓	4.005	0	6.924	0	-130695.929	-69039.074	490.734	1965.389670	
13BL- 9	13BL-10 ✓	178 57 8	58 54 22 ✓	7.997 ✓	4.130	0	6.848	0	-130691.799	-69032.226	504.506	2083.609780	
13BL-10	13BL-11 ✓	178 42 34	57 36 56 ✓	7.997 ✓	4.283	0	6.753	0	-130687.516	-69025.473	518.107	2219.052281	
13BL-11	13BL-12 ✓	178 38 48	56 15 44 ✓	7.994 ✓	4.440	0	6.648	0	-130683.076	-69018.825	531.508	2359.895520	
13BL-12	13BL-13 ✓	179 2 30	55 18 14 ✓	7.993 ✓	4.550	0	6.572	0	-130678.526	-69012.253	544.728	2478.512400	
13BL-13	13BL-14 ✓	178 48 11	54 6 25 ✓	8.001 ✓	4.691	0	6.482	0	-130673.835	-69005.771	557.782	2616.555362	
13BL-14	13BL-15 ✓	178 40 9	52 46 34 ✓	7.996 ✓	4.837	0	6.367	0	-130668.998	-68999.404	570.631	2760.142147	
13BL-15	13BL-16 ✓	178 49 57	51 36 31 ✓	8.000 ✓	4.968	0	6.270	0	-130664.030	-68993.134	583.268	2897.675424	
13BL-16	13BL-17 ✓	178 56 1	50 32 32 ✓	7.995 ✓	5.081	0	6.173	0	-130658.949	-68986.961	595.711	3026.807591	
13BL-17	13BL-18 ✓	178 46 46	49 19 18 ✓	7.995 ✓	5.211	0	6.063	0	-130653.738	-68980.898	607.947	3168.011817	
13BL-18	13BL-19 ✓	178 47 59	48 7 17 ✓	7.999 ✓	5.340	0	5.956	0	-130648.398	-68974.942	619.966	3310.618440	
13BL-19	13BL-20 ✓	178 54 43	47 2 0 ✓	6.297 ✓	4.292	0	4.608	0	-130644.106	-68970.334	630.530	2706.234760	
13BL-20	13BL-21 ✓	178 59 0	46 1 0 ✓	6.297 ✓	4.373	0	4.531	0	-130639.733	-68965.803	639.669	2797.272537	
13BL-21	13BL-22 ✓	179 40 20	45 41 20 ✓	35.110 ✓	24.526	0	25.123	0	-130615.207	-68940.680	669.323	16415.815898	
13BL-22	13BL-23 ✓	118 51 42	344 33 2 ✓	11.967 ✓	11.535	0	-3.188	0	-130603.672	-68943.868	691.258	7973.661030	
13BL-23	13BL-24 ✓	110 30 42	275 3 44 ✓	64.688 ✓	5.708	0	-64.436	0	-130597.964	-69008.304	623.634	3559.702872	

*** メンセキ ケイザン (ハイオウキヨホウ) ***

チクメイ ミヤコタチク トチクカクセイリシキヨウ

セリ NO... 13BL

NO.	NO.	ANGLE	AZIMUTH	LENGTH	DX	*	DY	*	X	Y	DMD	2A	カーブメンセキ
13BL-24	13BL-25 ✓	181 7 52	276 11 36 ✓	128.694 ✓	13.884	0	-127.943	0	-130584.080	-69136.247	431.255	5987.544420	
13BL-25	13BL-26 ✓	206 12 45	302 24 21 ✓	19.960 ✓	10.697	0	-16.852	0	-130573.383	-69153.099	286.460	3064.262620	
13BL-26	13BL-27 ✓	149 51 3	272 15 24 ✓	19.733 ✓	0.777	0	-19.718	0	-130572.606	-69172.817	249.890	194.164530	
13BL-27	13BL-28 ✓	153 2 58	245 18 22 ✓	36.654 ✓	-15.313	0	-33.302	0	-130587.919	-69206.119	196.870	-3014.670310	
13BL-28	13BL-29 ✓	208 21 8	273 39 30 ✓	14.012 ✓	0.894	0	-13.983	0	-130587.025	-69220.102	149.585	133.728990	
13BL-29	13BL-30 ✓	155 9 7	248 48 37 ✓	21.278 ✓	-7.691	0	-19.839	0	-130594.716	-69239.941	115.763	-890.333233	
13BL-30	13BL-31 ✓	252 47 0	321 35 37 ✓	3.602 ✓	2.823	0	-2.238	0	-130591.893	-69242.179	93.686	264.475578	
13BL-31	13BL-32 ✓	88 11 54	229 47 31 ✓	4.029 ✓	-2.601	0	-3.077	0	-130594.494	-69245.256	88.371	-229.852971	
13BL-32	13BL-33 ✓	270 16 7	320 3 38 ✓	0.329 ✓	0.252	0	-0.211	0	-130594.242	-69245.467	85.083	21.440916	
13BL-33	13BL-34 ✓	90 1 26	230 5 4 ✓	8.737 ✓	-5.606	0	-6.701	0	-130599.848	-69252.168	78.171	-438.226626	
13BL-34	13BL-35 ✓	180 28 43	230 33 47 ✓	4.997 ✓	-3.174	0	-3.859	0	-130603.022	-69256.027	67.611	-214.597314	
13BL-35	13BL-36 ✓	180 42 39	231 16 26 ✓	5.002 ✓	-3.129	0	-3.902	0	-130606.151	-69259.929	59.850	-187.270650	
13BL-36	13BL-37 ✓	181 1 52	232 18 18 ✓	5.000 ✓	-3.057	0	-3.956	0	-130609.208	-69263.885	51.992	-158.939544	
13BL-37	13BL-38 ✓	180 57 46	233 16 4 ✓	4.996 ✓	-2.988	0	-4.004	0	-130612.196	-69267.889	44.032	-131.567616	
13BL-38	13BL-39 ✓	180 55 41	234 11 45 ✓	5.000 ✓	-2.925	0	-4.055	0	-130615.121	-69271.944	35.973	-105.221025	
13BL-39	13BL-40 ✓	180 58 12	235 9 57 ✓	5.000 ✓	-2.856	0	-4.104	0	-130617.977	-69276.048	27.814	-79.436784	
13BL-40	13BL-41 ✓	180 44 4	235 54 1 ✓	5.003 ✓	-2.805	0	-4.143	0	-130620.782	-69280.191	19.567	-54.885435	
13BL-41	13BL-42 ✓	181 11 44	237 5 45 ✓	4.994 ✓	-2.713	0	-4.193	0	-130623.495	-69284.384	11.231	-30.469703	
13BL-42	13BL-43 ✓	180 54 52	238 0 37 ✓	5.000 ✓	-2.649	0	-4.241	0	-130626.144	-69288.625	2.797	-7.409253	
13BL-43	13BL-44 ✓	180 46 6	238 46 43 ✓	4.997 ✓	-2.590	0	-4.273	0	-130628.734	-69292.898	-5.717	14.807030	
13BL-44	13BL-45 ✓	180 58 24	239 45 7 ✓	4.999 ✓	-2.518	0	-4.318	0	-130631.252	-69297.216	-14.308	36.027544	
13BL-45	13BL-46 ✓	180 59 0	240 44 7 ✓	5.004 ✓	-2.446	0	-4.365	0	-130633.698	-69301.581	-22.991	56.235986	
13BL-46	13BL-47 ✓	181 2 21	241 46 28 ✓	5.001 ✓	-2.365	0	-4.406	0	-130636.063	-69305.987	-31.762	75.117130	
13BL-47	13BL-48 ✓	180 34 32	242 21 0 ✓	4.700 ✓	-2.181	0	-4.163	0	-130638.244	-69310.150	-40.331	87.961911	

*** メンセキ ケイサン (ハ"イオウキヨホウ) ***

チクメイ ... ミヤコタ"チク トチクカクセイリシ"キ"ヨウ

レイリ NO... 13BL ✓

NO.	NO.	ANGLE	AZIMUTH	LENGTH	DX	*	DY	*	X	Y	DMD	2A	カ-フ"メンセキ
13BL-48	13BL-49 ✓	180 52 3	243 13 3 ✓	4.596 ✓	-2.071	0	-4.103	0	-130640.315	-69314.253	-48.597	100.644387	
13BL-49	13BL-50 ✓	137 18 25	200 31 28 ✓	10.017 ✓	-9.381	0	-3.512	0	-130649.696	-69317.765	-56.212	527.324772	
13BL-50	13BL- 1 ✓	135 56 30	156 27 58 ✓	149.575 ✓	-137.134	0	59.724	0	-130786.830	-69258.041	0.000	0.000000	
TOTAL..	ソツカク入ウ= 50	8640	0 0	935.349	-0.001	1 ✓	0.000	0 ✓			ハ"イオウキ=	92961.252602	
											1/2=	46480.62	+0.00
											メンセキ=	46480.62 ✓	

*** メンセキ ケイサン (ハ"イオウキヨホウ) ***

チクメイ ... ミヤコタ"チク トチクカクセイリシ"キ"ヨウ

セリ NO... 13BL(1) ✓

NO.	NO.	ANGLE	AZIMUTH	LENGTH	DX	*	DY	*	X	Y	DMD	2A	カーブ"メンセキ
13BL-50	13BL- 1 ✓		156 27 58						-130786.830	-69258.041			
13BL- 1	13BL- 2 ✓	135 8 33	111 36 31 ✓	9.990 ✓	-3.679	0	9.288	0	-130790.509	-69248.753	69.012	-253.895148	
13BL- 2	13BL-61 ✓	134 50 51	66 27 22 ✓	174.371 ✓	69.653	0	159.855	1	-130720.856	-69088.897	238.156	16588.279868	
13BL-61	13BL-26 ✓	90 1 5	336 28 27 ✓	160.842 ✓	147.473	0	-64.202	0	-130573.383	-69153.099	333.810	49227.962130	
13BL-26	13BL-27 ✓	115 46 57	272 15 24 ✓	19.733 ✓	0.777	0	-19.718	0	-130572.606	-69172.817	249.890	194.164530	
13BL-27	13BL-28 ✓	153 2 58	245 18 22 ✓	36.654 ✓	-15.313	0	-33.302	0	-130587.919	-69206.119	196.870	-3014.670310	
13BL-28	13BL-29 ✓	208 21 8	273 39 30 ✓	14.012 ✓	0.894	0	-13.983	0	-130587.025	-69220.102	149.585	133.728990	
13BL-29	13BL-30 ✓	155 9 7	248 48 37 ✓	21.278 ✓	-7.691	0	-19.839	0	-130594.716	-69239.941	115.763	-890.333233	
13BL-30	13BL-31 ✓	252 47 0	321 35 37 ✓	3.602 ✓	2.823	0	-2.238	0	-130591.893	-69242.179	93.686	264.475578	
13BL-31	13BL-32 ✓	88 11 54	229 47 31 ✓	4.029 ✓	-2.601	0	-3.077	0	-130594.494	-69245.256	88.371	-229.852971	
13BL-32	13BL-33 ✓	270 16 7	320 3 38 ✓	0.329 ✓	0.252	0	-0.211	0	-130594.242	-69245.467	85.083	21.440916	
13BL-33	13BL-34 ✓	90 1 26	230 5 4 ✓	8.737 ✓	-5.606	0	-6.701	0	-130599.848	-69252.168	78.171	-438.226626	
13BL-34	13BL-35 ✓	180 28 43	230 33 47 ✓	4.997 ✓	-3.174	0	-3.859	0	-130603.022	-69256.027	67.611	-214.597314	
13BL-35	13BL-36 ✓	180 42 39	231 16 26 ✓	5.002 ✓	-3.129	0	-3.902	0	-130606.151	-69259.929	59.850	-187.270650	
13BL-36	13BL-37 ✓	181 1 52	232 18 18 ✓	5.000 ✓	-3.057	0	-3.956	0	-130609.208	-69263.885	51.992	-158.939544	
13BL-37	13BL-38 ✓	180 57 46	233 16 4 ✓	4.996 ✓	-2.988	0	-4.004	0	-130612.196	-69267.889	44.032	-131.567616	
13BL-38	13BL-39 ✓	180 55 41	234 11 45 ✓	5.000 ✓	-2.925	0	-4.055	0	-130615.121	-69271.944	35.973	-105.221025	
13BL-39	13BL-40 ✓	180 58 12	235 9 57 ✓	5.000 ✓	-2.856	0	-4.104	0	-130617.977	-69276.048	27.814	-79.436784	
13BL-40	13BL-41 ✓	180 44 4	235 54 1 ✓	5.003 ✓	-2.805	0	-4.143	0	-130620.782	-69280.191	19.567	-54.885435	
13BL-41	13BL-42 ✓	181 11 44	237 5 45 ✓	4.994 ✓	-2.713	0	-4.193	0	-130623.495	-69284.384	11.231	-30.469703	
13BL-42	13BL-43 ✓	180 54 52	238 0 37 ✓	5.000 ✓	-2.649	0	-4.241	0	-130626.144	-69288.625	2.797	-7.409253	
13BL-43	13BL-44 ✓	180 46 6	238 46 43 ✓	4.997 ✓	-2.590	0	-4.273	0	-130628.734	-69292.898	-5.717	14.807030	
13BL-44	13BL-45 ✓	180 58 24	239 45 7 ✓	4.999 ✓	-2.518	0	-4.318	0	-130631.252	-69297.216	-14.308	36.027544	
13BL-45	13BL-46 ✓	180 59 0	240 44 7 ✓	5.004 ✓	-2.446	0	-4.365	0	-130633.698	-69301.581	-22.991	56.235986	

*** メンセキ ケイサン (ハ"イオウキヨホウ) ***

チクメイ ... ミヤコタ"チク トチクカクセイリシ"キ"ヨウ

セイリ NO... 13BL(1) ✓

NO.	NO.	ANGLE	AZIMUTH	LENGTH	DX	*	DY	*	X	Y	DMD	2A	カ-フ"メンセキ
13BL-46	13BL-47 ✓	181 2 21	241 46 28 ✓	5.001 ✓	-2.365	0	-4.406	0	-130636.063	-69305.987	-31.762	75.117130	
13BL-47	13BL-48 ✓	180 34 32	242 21 0 ✓	4.700 ✓	-2.181	0	-4.163	0	-130638.244	-69310.150	-40.331	87.961911	
13BL-48	13BL-49 ✓	180 52 3	243 13 3 ✓	4.596 ✓	-2.071	0	-4.103	0	-130640.315	-69314.253	-48.597	100.644387	
13BL-49	13BL-50 ✓	137 18 25	200 31 28 ✓	10.017 ✓	-9.381	0	-3.512	0	-130649.696	-69317.765	-56.212	527.324772	
13BL-50	13BL-1 ✓	135 56 30	156 27 58 ✓	149.575 ✓	-137.134	0	59.724	0	-130786.830	-69258.041	0.000	0.000000	
TOTAL..	ソツカク入ウ= 28	4680	0 0	687.458	0.000	0 ✓	-0.001	1 ✓				61531.395160	
												1/2=	30765.69 +0.00
												メンセキ=	30765.69 ✓

*** メンセキ ケイサン (ハ"イオウキヨホウ) ***

チクメイ ... ミヤコタ"チク トチクカクセイリシ"キ"ヨウ

セリ NO... 13BL(2)✓

NO.	NO.	ANGLE	AZIMUTH	LENGTH	DX	*	DY	*	X	Y	DMD	2A	カーブ"メンセキ
13BL-26	13BL-61✓		156 28 27						-130720.856	-69088.897			
13BL-61	13BL-3✓	89 58 55	66 27 22✓	7.780✓	3.108	0	7.132	0	-130717.748	-69081.765	71.334	221.706072	
13BL-3	13BL-4✓	179 31 29	65 58 51✓	7.994✓	3.254	0	7.302	0	-130714.494	-69074.463	85.768	279.089072	
13BL-4	13BL-5✓	178 41 4	64 39 55✓	7.997✓	3.422	0	7.228	0	-130711.072	-69067.235	100.298	343.219756	
13BL-5	13BL-6✓	178 46 57	63 26 52✓	7.995✓	3.574	0	7.152	0	-130707.498	-69060.083	114.678	409.859172	
13BL-6	13BL-7✓	178 51 34	62 18 26✓	7.998✓	3.717	0	7.082	0	-130703.781	-69053.001	128.912	479.165904	
13BL-7	13BL-8✓	178 54 40	61 13 6✓	7.990✓	3.847	0	7.003	0	-130699.934	-69045.998	142.997	550.109459	
13BL-8	13BL-9✓	178 44 8	59 57 14✓	7.999✓	4.005	0	6.924	0	-130695.929	-69039.074	156.924	628.480620	
13BL-9	13BL-10✓	178 57 8	58 54 22✓	7.997✓	4.130	0	6.848	0	-130691.799	-69032.226	170.696	704.974480	
13BL-10	13BL-11✓	178 42 34	57 36 56✓	7.997✓	4.283	0	6.753	0	-130687.516	-69025.473	184.297	789.344051	
13BL-11	13BL-12✓	178 38 48	56 15 44✓	7.994✓	4.440	0	6.648	0	-130683.076	-69018.825	197.698	877.779120	
13BL-12	13BL-13✓	179 2 30	55 18 14✓	7.993✓	4.550	0	6.572	0	-130678.526	-69012.253	210.918	959.676900	
13BL-13	13BL-14✓	178 48 11	54 6 25✓	8.001✓	4.691	0	6.482	0	-130673.835	-69005.771	223.972	1050.652652	
13BL-14	13BL-15✓	178 40 9	52 46 34✓	7.996✓	4.837	0	6.367	0	-130668.998	-68999.404	236.821	1145.503177	
13BL-15	13BL-16✓	178 49 57	51 36 31✓	8.000✓	4.968	0	6.270	0	-130664.030	-68993.134	249.458	1239.307344	
13BL-16	13BL-17✓	178 56 1	50 32 32✓	7.995✓	5.081	0	6.173	0	-130658.949	-68986.961	261.901	1330.718981	
13BL-17	13BL-18✓	178 46 46	49 19 18✓	7.995✓	5.211	0	6.063	0	-130653.738	-68980.898	274.137	1428.527907	
13BL-18	13BL-19✓	178 47 59	48 7 17✓	7.999✓	5.340	0	5.956	0	-130648.398	-68974.942	286.156	1528.073040	
13BL-19	13BL-20✓	178 54 43	47 2 0✓	6.297✓	4.292	0	4.608	0	-130644.106	-68970.334	296.720	1273.522240	
13BL-20	13BL-21✓	178 59 0	46 1 0✓	6.297✓	4.373	0	4.531	0	-130639.733	-68965.803	305.859	1337.521407	
13BL-21	13BL-62✓	179 40 20	45 41 20✓	28.481✓	19.896	-1	20.380	0	-130619.838	-68945.423	330.770	6580.669150	
13BL-62	13BL-63✓	118 51 42	344 33 2✓	17.340✓	16.713	0	-4.619	0	-130603.125	-68950.042	346.531	5791.572603	
13BL-63	13BL-24✓	110 30 42	275 3 44✓	58.490✓	5.161	0	-58.262	0	-130597.964	-69008.304	283.650	1463.917650	
13BL-24	13BL-25✓	181 7 52	276 11 36✓	128.694✓	13.884	0	-127.943	0	-130584.080	-69136.247	97.445	1352.926380	

*** メンセキ ケイサン (ハ"イオウキヨホウ) ***

チクメイ ... ミヤコタ"チク トチクカクセイリシ"キ"ヨウ

レイリ NO... 13BL(2) ✓

NO.	NO.	ANGLE	AZIMUTH	LENGTH	DX	*	DY	*	X	Y	DMD	2A	カ-フ"メンセキ
13BL-25	13BL-26 ✓	206 12 45	302 24 21 ✓	19.960 ✓	10.697	0	-16.852	0	-130573.383	-69153.099	-47.350	-506.502950	
13BL-26	13BL-61 ✓	34 4 6	156 28 27 ✓	160.842 ✓	-147.473	0	64.202	0	-130720.856	-69088.897	0.000	0.000000	
TOTAL..	ツツカクスク= 25	4140	0 0	562.121	0.001	-1 ✓	0.000	0 ✓			ハ"イメンセキ=	31259.814187	
											1/2=	15629.90	+0.00
											メンセキ=	15629.90 ✓	

*** メンセキ ケイザン (ハ"イオウキヨホウ) ***

チクメイ ... ミヤコタ"チク トチクカクセイリシ"キ"ヨウ

セリ NO... 13BL(3)✓

NO.	NO.	ANGLE	AZIMUT-H	LENGTH	DX	*	DY	*	X	Y	DMD	2A	カ-フ"メンセキ
13BL-63	13BL-62✓		164 33 2						-130619.838	-68945.423			
13BL-62	13BL-22✓	61 8 18	45 41 20✓	6.629✓	4.631	0	4.743	0	-130615.207	-68940.680	9.362	43.355422	
13BL-22	13BL-23✓	118 51 42	344 33 2✓	11.967✓	11.535	0	-3.188	0	-130603.672	-68943.868	10.917	125.927595	
13BL-23	13BL-63✓	110 30 42	275 3 44✓	6.198✓	0.547	0	-6.174	0	-130603.125	-68950.042	1.555	0.850585	
13BL-63	13BL-62✓	69 29 18	164 33 2✓	17.340✓	-16.713	0	4.619	0	-130619.838	-68945.423	0.000	0.000000	
TOTAL..	ソツカクスク= 4	360 0 0		42.134	0.000	0✓	0.000	0✓			ハ"イメンセキ=	170.133602	
											1/2=	85.06	+0.00
											メンセキ=	85.06 ✓	

*** ケツコウ トラハース ***

チクメイ ... ミヤコタチク トチクカクセイリシキヨウ

NO.	NO.	ANGLE	*	AZIMUTH	LENGTH	DX	*	DY	*	X	Y	NO.
	13BL- 2 ✓									-130790.509	-69248.753	13BL- 2
13BL- 2	13BL-61 ✓			66 27 22 ✓	174.371 ✓	69.653	0	159.855	1	-130720.856	-69088.897	13BL-61
13BL-61	13BL- 3 ✓	180 0 0		66 27 22 ✓	7.780 ✓	3.108	0	7.132	0	-130717.748	-69081.765	13BL- 3
	TOTAL..	180 0 0			182.151 ✓	72.761	0 ✓	166.987	1 ✓			
	13BL-21 ✓									-130639.733	-68965.803	13BL-21
13BL-21	13BL-62 ✓			45 41 20 ✓	28.481 ✓	19.896	-1	20.380	0	-130619.838	-68945.423	13BL-62
13BL-62	13BL-22 ✓	180 0 0		45 41 20 ✓	6.629 ✓	4.631	0	4.743	0	-130615.207	-68940.680	13BL-22
	TOTAL..	180 0 0			35.110 ✓	24.527	-1 ✓	25.123	0 ✓			
	13BL-23 ✓									-130603.672	-68943.868	13BL-23
13BL-23	13BL-63 ✓			275 3 44 ✓	6.198 ✓	0.547	0	-6.174	0	-130603.125	-68950.042	13BL-63
13BL-63	13BL-24 ✓	180 0 0		275 3 44 ✓	58.490 ✓	5.161	0	-58.262	0	-130597.964	-69008.304	13BL-24
	TOTAL..	180 0 0			64.688 ✓	5.708	0 ✓	-64.436	0 ✓			