

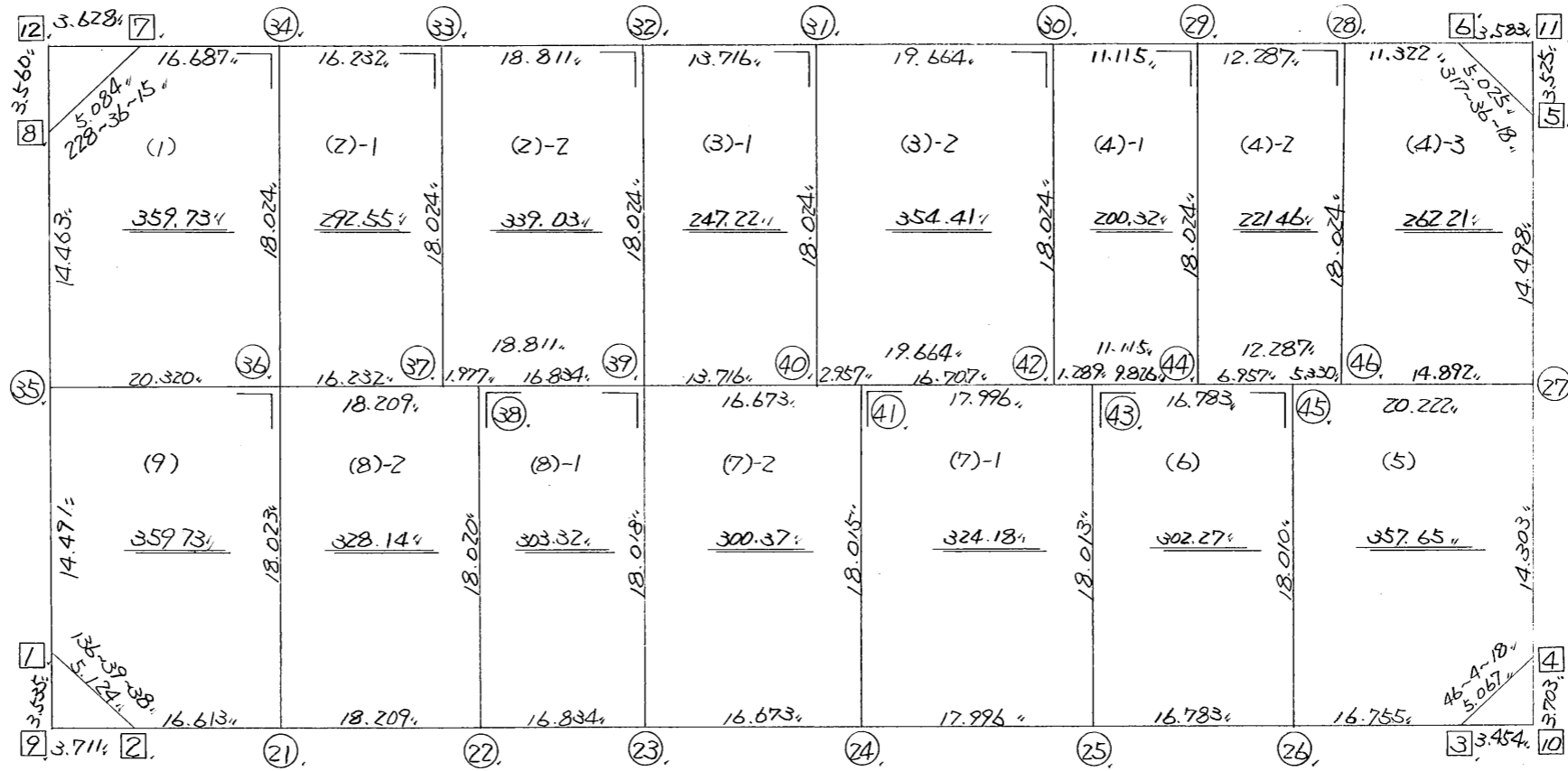
略 図

街区面積 = 4552.63 m²
 画地面積 = 4552.59

$\frac{273-3-14}{119.834}$

$\frac{183-4-7}{28.934}$

$\frac{28.801}{3-5-49}$



$\frac{119.863}{93-2-43}$

*** メンセキ ケイサン (ハイオウキヨホウ) ***

チクメイ ... ミヤコタチク トチクカクセイリシキヨウ

NO.	NO.	ANGLE	AZIMUTH	LENGTH	DX	*	DY	*	X	Y	DMD	2A	カーブメンセキ
148BL- 8	148BL- 1		183 4 7						-131589.597	-69338.401			
148BL- 1	148BL- 2	133 35 31	136 39 38	5.124	-3.727	0	3.517	0	-131593.324	-69334.884	1.967	-7.331009	
148BL- 2	148BL- 3	136 23 5	93 2 43	119.863	-6.368	0	119.694	0	-131599.692	-69215.190	125.178	-797.133504	
148BL- 3	148BL- 4	133 1 35	46 4 18	5.067	3.515	0	3.649	0	-131596.177	-69211.541	248.521	873.551315	
148BL- 4	148BL- 5	137 1 31	3 5 49	28.801	28.759	0	1.556	0	-131567.418	-69209.985	253.726	7296.906034	
148BL- 5	148BL- 6	134 30 29	317 36 18	5.025	3.711	0	-3.388	0	-131563.707	-69213.373	251.894	934.778634	
148BL- 6	148BL- 7	135 26 56	273 3 14	119.834	6.384	0	-119.664	0	-131557.323	-69333.037	128.842	822.527328	
148BL- 7	148BL- 8	135 33 1	228 36 15	5.084	-3.362	0	-3.814	0	-131560.685	-69336.851	5.364	-18.033768	
148BL- 8	148BL- 1	134 27 52	183 4 7	28.954	-28.912	0	-1.550	0	-131589.597	-69338.401	0.000	0.000000	
TOTAL..	ソツカクスウ= 8	1080	0 0	317.752	0.000	0	0.000	0			ハイメンセキ=	9105.265030	
											1/2=	4552.63	+0.00
											メンセキ=	4552.63	

*** メンセキ ケイサン (ハイオウキヨホウ) ***

チクメイ ... ミヤコタチク トチクカクセイリシキヨウ

NO.	NO.	ANGLE	AZIMUTH	LENGTH	DX	*	DY	*	X	Y	DMD	2A	カ-フメンセキ
148BL- 8	148BL-35		183 4 7						-131575.127	-69337.625			
148BL-35	148BL-36	89 59 7	93 3 14	20.320	-1.083	0	20.291	0	-131576.210	-69317.334	19.517	-21.136911	
148BL-36	148BL-34	90 0 0	3 3 14	18.024	17.998	0	0.960	0	-131558.212	-69316.374	40.768	733.742464	
148BL-34	148BL- 7	90 0 0	273 3 14	16.687	0.889	0	-16.663	0	-131557.323	-69333.037	25.065	22.282785	
148BL- 7	148BL- 8	135 33 1	228 3 6 15	5.084	-3.362	0	-3.814	0	-131560.685	-69336.851	4.588	-15.424856	
148BL- 8	148BL-35	134 27 52	183 4 7	14.463	-14.442	0	-0.774	0	-131575.127	-69337.625	0.000	0.000000	
TOTAL...	ソツカク入ウ= 5	540 0 0		74.578	0.000	0	0.000	0			ハイメンセキ=	719.463482	
											1/2=	359.73	+0.00
											メンセキ=	359.73	

セリ NO... 148BL(2)-1

148BL-34	148BL-36		183 3 14						-131576.210	-69317.334			
148BL-36	148BL-37	90 0 0	93 3 14	16.232	-0.865	0	16.209	0	-131577.075	-69301.125	15.249	-13.190385	
148BL-37	148BL-33	90 0 0	3 3 14	18.024	17.998	0	0.960	0	-131559.077	-69300.165	32.418	583.459164	
148BL-33	148BL-34	90 0 0	273 3 14	16.232	0.865	0	-16.209	0	-131558.212	-69316.374	17.169	14.851185	
148BL-34	148BL-36	90 0 0	183 3 14	18.024	-17.998	0	-0.960	0	-131576.210	-69317.334	0.000	0.000000	
TOTAL...	ソツカク入ウ= 4	360 0 0		68.512	0.000	0	0.000	0			ハイメンセキ=	585.119964	
											1/2=	292.55	+0.00
											メンセキ=	292.55	

*** メンセキ ケイサン (ハイイウキヨホウ) ***

チクメイ ... ミヤコタチク トチクカクセイリシキヨウ

											セリ NO... 148BL(2)-2						
NO.	NO.	ANGLE			AZIMUTH			LENGTH	DX	*	DY	*	X	Y	DMD	2A	カ-フメンセキ
148BL-33	148BL-37				183	3	14						-131577.075	-69301.125			
148BL-37	148BL-39	90	0	0	93	3	14	18.811	-1.002	0	18.784	0	-131578.077	-69282.341	17.824	-17.859648	
148BL-39	148BL-32	90	0	0	3	3	14	18.024	17.998	0	0.960	0	-131560.079	-69281.381	37.568	676.148864	
148BL-32	148BL-33	90	0	0	273	3	14	18.811	1.002	0	-18.784	0	-131559.077	-69300.165	19.744	19.783488	
148BL-33	148BL-37	90	0	0	183	3	14	18.024	-17.998	0	-0.960	0	-131577.075	-69301.125	0.000	0.000000	
TOTAL..	ソツカクスク= 4	360	0	0				73.670	0.000	0	0.000	0			ハイイウキヨホウ=	678.072704	
															1/2=	339.03	+0.00
															メンセキ=	339.03	

											セリ NO... 148BL(3)-1						
148BL-32	148BL-39				183	3	14						-131578.077	-69282.341			
148BL-39	148BL-40	90	0	0	93	3	14	13.716	-0.731	0	13.697	0	-131578.808	-69268.644	12.737	-9.310747	
148BL-40	148BL-31	90	0	0	3	3	14	18.024	17.998	0	0.960	0	-131560.810	-69267.684	27.394	493.037212	
148BL-31	148BL-32	90	0	0	273	3	14	13.716	0.731	0	-13.697	0	-131560.079	-69281.381	14.657	10.714267	
148BL-32	148BL-39	90	0	0	183	3	14	18.024	-17.998	0	-0.960	0	-131578.077	-69282.341	0.000	0.000000	
TOTAL..	ソツカクスク= 4	360	0	0				63.480	0.000	0	0.000	0			ハイイウキヨホウ=	494.440732	
															1/2=	247.22	+0.00
															メンセキ=	247.22	

*** メンセキ ケイサン (ハイオウキヨホウ) ***

チクメイ ... ミヤコタチク トチクカクセイリシキヨウ

											セリ NO... 148BL(3)-2		カーブメンセキ				
NO.	NO.	ANGLE			AZIMUTH			LENGTH	DX	*	DY	*	X	Y	DMD	2A	
148BL-31	148BL-40				183	3	14						-131578.808	-69268.644			
148BL-40	148BL-42	90	0	0	93	3	14	19.664	-1.048	1	19.636	0	-131579.855	-69249.008	18.676	-19.553772	
148BL-42	148BL-30	90	0	0	3	3	14	18.024	17.998	0	0.960	0	-131561.857	-69248.048	39.272	706.817456	
148BL-30	148BL-31	90	0	0	273	3	14	19.664	1.048	-1	-19.636	0	-131560.810	-69267.684	20.596	21.564012	
148BL-31	148BL-40	90	0	0	183	3	14	18.024	-17.998	0	-0.960	0	-131578.808	-69268.644	0.000	0.000000	
TOTAL..	ソツカクスウ= 4	360	0	0				75.376	0.000	0	0.000	0			ハイメンセキ=	708.827696	
															1/2=	354.41	+0.00
															メンセキ=	354.41	

											セリ NO... 148BL(4)-1						
148BL-30	148BL-42				183	3	14						-131579.855	-69249.008			
148BL-42	148BL-44	90	0	0	93	3	14	11.115	-0.592	0	11.099	0	-131580.447	-69237.909	10.139	-6.002288	
148BL-44	148BL-29	90	0	0	3	3	14	18.024	17.998	0	0.960	0	-131562.449	-69236.949	22.198	399.519604	
148BL-29	148BL-30	90	0	0	273	3	14	11.115	0.592	0	-11.099	0	-131561.857	-69248.048	12.059	7.138928	
148BL-30	148BL-42	90	0	0	183	3	14	18.024	-17.998	0	-0.960	0	-131579.855	-69249.008	0.000	0.000000	
TOTAL..	ソツカクスウ= 4	360	0	0				58.278	0.000	0	0.000	0			ハイメンセキ=	400.656244	
															1/2=	200.32	+0.00
															メンセキ=	200.32	

*** メンセキ ケイサン (ハイイウキヨホウ) ***

チクメイ ... ミヤコタチク トチクカクセイリヨキヨウ

NO.	NO.	ANGLE	AZIMUTH	LENGTH	DX	*	DY	*	X	Y	DMD	2A	カ-フメンセキ
148BL-29	148BL-44		183 3 14						-131580.447	-69237.909			
148BL-44	148BL-46	90 0 0	93 3 14	12.287	-0.655	0	12.270	0	-131581.102	-69225.639	11.310	-7.408050	
148BL-46	148BL-28	90 0 0	3 3 14	18.024	17.998	0	0.960	0	-131563.104	-69224.679	24.540	441.670920	
148BL-28	148BL-29	90 0 0	273 3 14	12.287	0.655	0	-12.270	0	-131562.449	-69236.949	13.230	8.665650	
148BL-29	148BL-44	90 0 0	183 3 14	18.024	-17.998	0	-0.960	0	-131580.447	-69237.909	0.000	0.000000	
TOTAL..	ソツカクスク= 4	360 0 0		60.622	0.000	0	0.000	0			ハイイウキヨホウ=	442.928520	
											1/2=	221.46	+0.00
											メンセキ=	221.46	

チクメイ NO... 148BL(4)-3

148BL-28	148BL-46		183 3 14						-131581.102	-69225.639			
148BL-46	148BL-27	90 0 0	93 3 14	14.892	-0.793	0	14.871	0	-131581.895	-69210.768	13.911	-11.031423	
148BL-27	148BL- 5	90 2 35	3 5 49	14.498	14.477	0	0.783	0	-131567.418	-69209.985	29.565	428.012505	
148BL- 5	148BL- 6	134 30 29	317 36 18	5.025	3.711	0	-3.388	0	-131563.707	-69213.373	26.960	100.048560	
148BL- 6	148BL-28	135 26 56	273 3 14	11.322	0.603	0	-11.306	0	-131563.104	-69224.679	12.266	7.396398	
148BL-28	148BL-46	90 0 0	183 3 14	18.024	-17.998	0	-0.960	0	-131581.102	-69225.639	0.000	0.000000	
TOTAL..	ソツカクスク= 5	540 0 0		63.761	0.000	0	0.000	0			ハイイウキヨホウ=	524.426040	
											1/2=	262.21	+0.00
											メンセキ=	262.21	

*** メンセキ ケイサン (ハイオウキヨホウ) ***

チクメイ ... ミヤコタチク トチクカクセイリシキヨウ

セリ NO... 148BL(5)

NO.	NO.	ANGLE	AZIMUTH	LENGTH	DX	*	DY	*	X	Y	DMD	2A	カーブメンセキ
148BL-45	148BL-26		183 3 14						-131598.802	-69231.922			
148BL-26	148BL-3	89 59 29	93 2 43	16.755	-0.890	0	16.731	1	-131599.692	-69215.190	15.772	-14.037080	
148BL-3	148BL-4	133 1 35	46 4 18	5.067	3.515	0	3.649	0	-131596.177	-69211.541	36.153	127.077795	
148BL-4	148BL-27	137 1 31	3 5 49	14.303	14.282	0	0.773	0	-131581.895	-69210.768	40.575	579.492150	
148BL-27	148BL-45	89 57 25	273 3 14	20.222	1.077	0	-20.193	-1	-131580.818	-69230.962	21.154	22.782858	
148BL-45	148BL-26	90 0 0	183 3 14	18.010	-17.984	0	-0.959	-1	-131598.802	-69231.922	0.000	0.000000	
TOTAL..	ソツカクスウ= 5	540 0 0		74.357	0.000	0	0.001	-1			ハイメンセキ=	715.315723	
											1/2=	357.65	+0.00
											メンセキ=	357.65	

セリ NO... 148BL(6)

148BL-43	148BL-25		183 3 14						-131597.911	-69248.681			
148BL-25	148BL-26	89 59 29	93 2 43	16.783	-0.892	1	16.759	0	-131598.802	-69231.922	15.799	-14.076909	
148BL-26	148BL-45	90 0 31	3 3 14	18.010	17.984	0	0.959	1	-131580.818	-69230.962	33.518	602.787712	
148BL-45	148BL-43	90 0 0	273 3 14	16.783	0.894	0	-16.759	0	-131579.924	-69247.721	17.719	15.840786	
148BL-43	148BL-25	90 0 0	183 3 14	18.013	-17.987	0	-0.960	0	-131597.911	-69248.681	0.000	0.000000	
TOTAL..	ソツカクスウ= 4	360 0 0		69.589	-0.001	1	-0.001	1			ハイメンセキ=	604.551589	
											1/2=	302.27	+0.00
											メンセキ=	302.27	

*** メンセキ ケイサン (ハイオウキヨホウ) ***

チクメイ ミヤコタツチク トチクカクセイリヨキヨウ

セリ NO... 148BL(7)-1

NO.	NO.	ANGLE	AZIMUTH	LENGTH	DX	*	DY	*	X	Y	DMD	2A	カ-フメンセキ
148BL-41	148BL-24		183 3 14						-131596.954	-69266.652			
148BL-24	148BL-25	89 59 29	93 2 43	17.996	-0.956	-1	17.971	0	-131597.911	-69248.681	17.011	-16.279527	
148BL-25	148BL-43	90 0 31	3 3 14	18.013	17.987	0	0.960	0	-131579.924	-69247.721	35.942	646.488754	
148BL-43	148BL-41	90 0 0	273 3 14	17.996	0.959	0	-17.970	-1	-131578.965	-69265.692	18.931	18.154829	
148BL-41	148BL-24	90 0 0	183 3 14	18.015	-17.989	0	-0.960	0	-131596.954	-69266.652	0.000	0.000000	
TOTAL...	ソツカクスウ= 4	360 0 0		72.020	0.001	-1	0.001	-1			ハイメンセキ=	648.364056	
											1/2=	324.18	+0.00
											メンセキ=	324.18	

セリ NO... 148BL(7)-2

148BL-39	148BL-23		183 3 14						-131596.069	-69283.301			
148BL-23	148BL-24	89 59 29	93 2 43	16.673	-0.886	1	16.649	0	-131596.954	-69266.652	15.689	-13.884765	
148BL-24	148BL-41	90 0 31	3 3 14	18.015	17.989	0	0.960	0	-131578.965	-69265.692	33.298	598.997722	
148BL-41	148BL-39	90 0 0	273 3 14	16.673	0.888	0	-16.649	0	-131578.077	-69282.341	17.609	15.636792	
148BL-39	148BL-23	90 0 0	183 3 14	18.018	-17.992	0	-0.960	0	-131596.069	-69283.301	0.000	0.000000	
TOTAL...	ソツカクスウ= 4	360 0 0		69.379	-0.001	1	0.000	0			ハイメンセキ=	600.749749	
											1/2=	300.37	+0.00
											メンセキ=	300.37	

*** メンセキ ケイサン (ハイオウキヨホウ) ***

チクメイ ... ミヤコタチク トチクカクセイリシキヨウ

セリ NO... 148BL(8)-1

NO.	NO.	ANGLE	AZIMUTH	LENGTH	DX	*	DY	*	X	Y	DMD	2A	カーブメンセキ
148BL-38	148BL-22		183 3 14						-131595.174	-69300.111			
148BL-22	148BL-23	89 59 29	93 2 43	16.834	-0.894	-1	16.810	0	-131596.069	-69283.301	15.850	-14.185750	
148BL-23	148BL-39	90 0 31	3 3 14	18.018	17.992	0	0.960	0	-131578.077	-69282.341	33.620	604.891040	
148BL-39	148BL-38	90 0 0	273 3 14	16.834	0.897	0	-16.810	0	-131577.180	-69299.151	17.770	15.939690	
148BL-38	148BL-22	90 0 0	183 3 14	18.020	-17.994	0	-0.960	0	-131595.174	-69300.111	0.000	0.000000	
TOTAL..	ソツカクスウ= 4	360 0 0		69.706	0.001	-1	0.000	0			ハイメンセキ=	606.644980	
											1/2=	303.32	+0.00
											メンセキ=	303.32	

セリ NO... 148BL(8)-2

148BL-36	148BL-21		183 3 14						-131594.207	-69318.294			
148BL-21	148BL-22	89 59 29	93 2 43	18.209	-0.967	0	18.183	0	-131595.174	-69300.111	17.223	-16.654641	
148BL-22	148BL-38	90 0 31	3 3 14	18.020	17.994	0	0.960	0	-131577.180	-69299.151	36.366	654.369804	
148BL-38	148BL-36	90 0 0	273 3 14	18.209	0.970	0	-18.183	0	-131576.210	-69317.334	19.143	18.568710	
148BL-36	148BL-21	90 0 0	183 3 14	18.023	-17.997	0	-0.960	0	-131594.207	-69318.294	0.000	0.000000	
TOTAL..	ソツカクスウ= 4	360 0 0		72.461	0.000	0	0.000	0			ハイメンセキ=	656.283873	
											1/2=	328.14	+0.00
											メンセキ=	328.14	

*** メンセキ ケイサン (ハイオウキヨホウ) ***

チクメイ ... ミヤコタチク トチクカクセイリシキヨウ

セリ NO... 148BL(9)

NO.	NO.	ANGLE	AZIMUTH	LENGTH	DX	*	DY	*	X	Y	DMD	2A	カ-フメンセキ
148BL-35	148BL- 1		183 4 7						-131589.597	-69338.401			
148BL- 1	148BL- 2	133 35 31	136 39 38	5.124	-3.727	0	3.517	0	-131593.324	-69334.884	2.741	-10.215707	
148BL- 2	148BL-21	136 23 5	93 2 43	16.613	-0.883	0	16.590	0	-131594.207	-69318.294	22.848	-20.174784	
148BL-21	148BL-36	90 0 31	3 3 14	18.023	17.997	0	0.960	0	-131576.210	-69317.334	40.398	727.042806	
148BL-36	148BL-35	90 0 0	273 3 14	20.320	1.083	0	-20.291	0	-131575.127	-69337.625	21.067	22.815561	
148BL-35	148BL- 1	90 0 53	183 4 7	14.491	-14.470	0	-0.776	0	-131589.597	-69338.401	0.000	0.000000	
TOTAL..	ソツカクスウ= 5	540 0 0		74.571	0.000	0	0.000	0			ハイメンセキ=	719.467876	
											1/2=	359.73	+0.00
											メンセキ=	359.73	

*** ケツコウ トラハース ***

チクメイ ... ミヤコタチク トチクカクセイリシキヨウ

NO.	NO.	ANGLE	*	AZIMUTH	LENGTH	DX	*	DY	*	X	Y	NO.
	148BL- 2									-131593.324	-69334.884	148BL- 2
148BL- 2	148BL-21		93	2 43	16.613	-0.883	0	16.590	0	-131594.207	-69318.294	148BL-21
148BL-21	148BL-22	180 0 0	93	2 43	18.209	-0.967	0	18.183	0	-131595.174	-69300.111	148BL-22
148BL-22	148BL-23	180 0 0	93	2 43	16.834	-0.894	-1	16.810	0	-131596.069	-69283.301	148BL-23
148BL-23	148BL-24	180 0 0	93	2 43	16.673	-0.886	1	16.649	0	-131596.954	-69266.652	148BL-24
148BL-24	148BL-25	180 0 0	93	2 43	17.996	-0.956	-1	17.971	0	-131597.911	-69248.681	148BL-25
148BL-25	148BL-26	180 0 0	93	2 43	16.783	-0.892	1	16.759	0	-131598.802	-69231.922	148BL-26
148BL-26	148BL- 3	180 0 0	93	2 43	16.755	-0.890	0	16.731	1	-131599.692	-69215.190	148BL- 3
	TOTAL..	1080 0 0			119.863	-6.368	0	119.693	1			
	148BL- 4									-131596.177	-69211.541	148BL- 4
148BL- 4	148BL-27		3	5 49	14.303	14.282	0	0.773	0	-131581.895	-69210.768	148BL-27
148BL-27	148BL- 5	180 0 0	3	5 49	14.498	14.477	0	0.783	0	-131567.418	-69209.985	148BL- 5
	TOTAL..	180 0 0			28.801	28.759	0	1.556	0			
	148BL- 6									-131563.707	-69213.373	148BL- 6
148BL- 6	148BL-28		273	3 14	11.322	0.603	0	-11.306	0	-131563.104	-69224.679	148BL-28
148BL-28	148BL-29	180 0 0	273	3 14	12.287	0.655	0	-12.270	0	-131562.449	-69236.949	148BL-29
148BL-29	148BL-30	180 0 0	273	3 14	11.115	0.592	0	-11.099	0	-131561.857	-69248.048	148BL-30
148BL-30	148BL-31	180 0 0	273	3 14	19.664	1.048	-1	-19.636	0	-131560.810	-69267.684	148BL-31
148BL-31	148BL-32	180 0 0	273	3 14	13.716	0.731	0	-13.697	0	-131560.079	-69281.381	148BL-32
148BL-32	148BL-33	180 0 0	273	3 14	18.811	1.002	0	-18.784	0	-131559.077	-69300.165	148BL-33
148BL-33	148BL-34	180 0 0	273	3 14	16.232	0.865	0	-16.209	0	-131558.212	-69316.374	148BL-34
148BL-34	148BL- 7	180 0 0	273	3 14	16.687	0.889	0	-16.663	0	-131557.323	-69333.037	148BL- 7

*** ケツコウ トラハ"-入 ***

チクメイ ... ミヤコタチク トチクカクセイリシキヨウ

NO.	NO.	ANGLE	*	AZIMUTH	LENGTH	DX	*	DY	*	X	Y	NO.
	TOTAL..	1260 0 0			119.834	6.385	-1	-119.664	0			
	148BL- 8									-131560.685	-69336.851	148BL- 8
148BL- 8	148BL-35		183 4 7	7	14.463	-14.442	0	-0.774	0	-131575.127	-69337.625	148BL- 35
148BL-35	148BL- 1	180 0 0	183 4 7	7	14.491	-14.470	0	-0.776	0	-131589.597	-69338.401	148BL- 1
	TOTAL..	180 0 0			28.954	-28.912	0	-1.550	0			
	148BL-35									-131575.127	-69337.625	148BL-35
148BL-35	148BL-36		93 3 14	14	20.320	-1.083	0	20.291	0	-131576.210	-69317.334	148BL- 36
148BL-36	148BL-37	180 0 0	93 3 14	14	16.232	-0.865	0	16.209	0	-131577.075	-69301.125	148BL- 37
148BL-37	148BL-38	180 0 0	93 3 14	14	1.977	-0.105	0	1.974	0	-131577.180	-69299.151	148BL- 38
148BL-38	148BL-39	180 0 0	93 3 14	14	16.834	-0.897	0	16.810	0	-131578.077	-69282.341	148BL- 39
148BL-39	148BL-40	180 0 0	93 3 14	14	13.716	-0.731	0	13.697	0	-131578.808	-69268.644	148BL- 40
148BL-40	148BL-41	180 0 0	93 3 14	14	2.957	-0.158	1	2.953	-1	-131578.965	-69265.692	148BL- 41
148BL-41	148BL-42	180 0 0	93 3 14	14	16.707	-0.890	0	16.683	1	-131579.855	-69249.008	148BL- 42
148BL-42	148BL-43	180 0 0	93 3 14	14	1.289	-0.069	0	1.287	0	-131579.924	-69247.721	148BL- 43
148BL-43	148BL-44	180 0 0	93 3 14	14	9.826	-0.523	0	9.812	0	-131580.447	-69237.909	148BL- 44
148BL-44	148BL-45	180 0 0	93 3 14	14	6.957	-0.371	0	6.947	0	-131580.818	-69230.962	148BL- 45
148BL-45	148BL-46	180 0 0	93 3 14	14	5.330	-0.284	0	5.322	1	-131581.102	-69225.639	148BL- 46
148BL-46	148BL-27	180 0 0	93 3 14	14	14.892	-0.793	0	14.871	0	-131581.895	-69210.768	148BL- 27
	TOTAL..	1980 0 0			127.037	-6.769	1	126.856	1			
	148BL-35									-131575.127	-69337.625	148BL-35
148BL-35	148BL-36		93 3 14	14	20.320	-1.083	0	20.291	0	-131576.210	-69317.334	148BL- 36

*** ケツコウ トラハ入 ***

チクメイ ... ミヤコタチク トチクカクセイリシキヨウ

NO.	NO.	ANGLE	*	AZIMUTH	LENGTH	DX	*	DY	*	X	Y	NO.
148BL-36	148BL-37	180 0 0		93 3 14	16.232	-0.865	0	16.209	0	-131577.075	-69301.125	148BL-37
148BL-37	148BL-39	180 0 0		93 3 14	18.811	-1.002	0	18.784	0	-131578.077	-69282.341	148BL-39
148BL-39	148BL-40	180 0 0		93 3 14	13.716	-0.731	0	13.697	0	-131578.808	-69268.644	148BL-40
148BL-40	148BL-42	180 0 0		93 3 14	19.664	-1.048	1	19.636	0	-131579.855	-69249.008	148BL-42
148BL-42	148BL-44	180 0 0		93 3 14	11.115	-0.592	0	11.099	0	-131580.447	-69237.909	148BL-44
148BL-44	148BL-46	180 0 0		93 3 14	12.287	-0.655	0	12.270	0	-131581.102	-69225.639	148BL-46
148BL-46	148BL-27	180 0 0		93 3 14	14.892	-0.793	0	14.871	0	-131581.895	-69210.768	148BL-27
	TOTAL..	1260 0 0			127.037	-6.769	1	126.857	0			
	148BL-35									-131575.127	-69337.625	148BL-35
148BL-35	148BL-36			93 3 14	20.320	-1.083	0	20.291	0	-131576.210	-69317.334	148BL-36
148BL-36	148BL-38	180 0 0		93 3 14	18.209	-0.970	0	18.183	0	-131577.180	-69299.151	148BL-38
148BL-38	148BL-39	180 0 0		93 3 14	16.834	-0.897	0	16.810	0	-131578.077	-69282.341	148BL-39
148BL-39	148BL-41	180 0 0		93 3 14	16.673	-0.888	0	16.649	0	-131578.965	-69265.692	148BL-41
148BL-41	148BL-43	180 0 0		93 3 14	17.996	-0.959	0	17.970	1	-131579.924	-69247.721	148BL-43
148BL-43	148BL-45	180 0 0		93 3 14	16.783	-0.894	0	16.759	0	-131580.818	-69230.962	148BL-45
148BL-45	148BL-27	180 0 0		93 3 14	20.222	-1.077	0	20.193	1	-131581.895	-69210.768	148BL-27
	TOTAL..	1080 0 0			127.037	-6.768	0	126.855	2			
	148BL-21									-131594.207	-69318.294	148BL-21
148BL-21	148BL-36			3 3 14	18.023	17.997	0	0.960	0	-131576.210	-69317.334	148BL-36
148BL-36	148BL-34	180 0 0		3 3 14	18.024	17.998	0	0.960	0	-131558.212	-69316.374	148BL-34
	TOTAL..	180 0 0			36.047	35.995	0	1.920	0			

*** ケツコウ トラハ入 ***

チクメイ ... ミヤコタチク トチクカクセイリシキヨウ

NO.	NO.	ANGLE	*	AZIMUTH	LENGTH	DX	*	DY	*	X	Y	NO.
	148BL-23									-131596.069	-69283.301	148BL-23
148BL-23	148BL-39			3 3 14	18.018	17.992	0	0.960	0	-131578.077	-69282.341	148BL-39
148BL-39	148BL-32	180 0 0		3 3 14	18.024	17.998	0	0.960	0	-131560.079	-69281.381	148BL-32
	TOTAL	180 0 0			36.042	35.990	0	1.920	0			