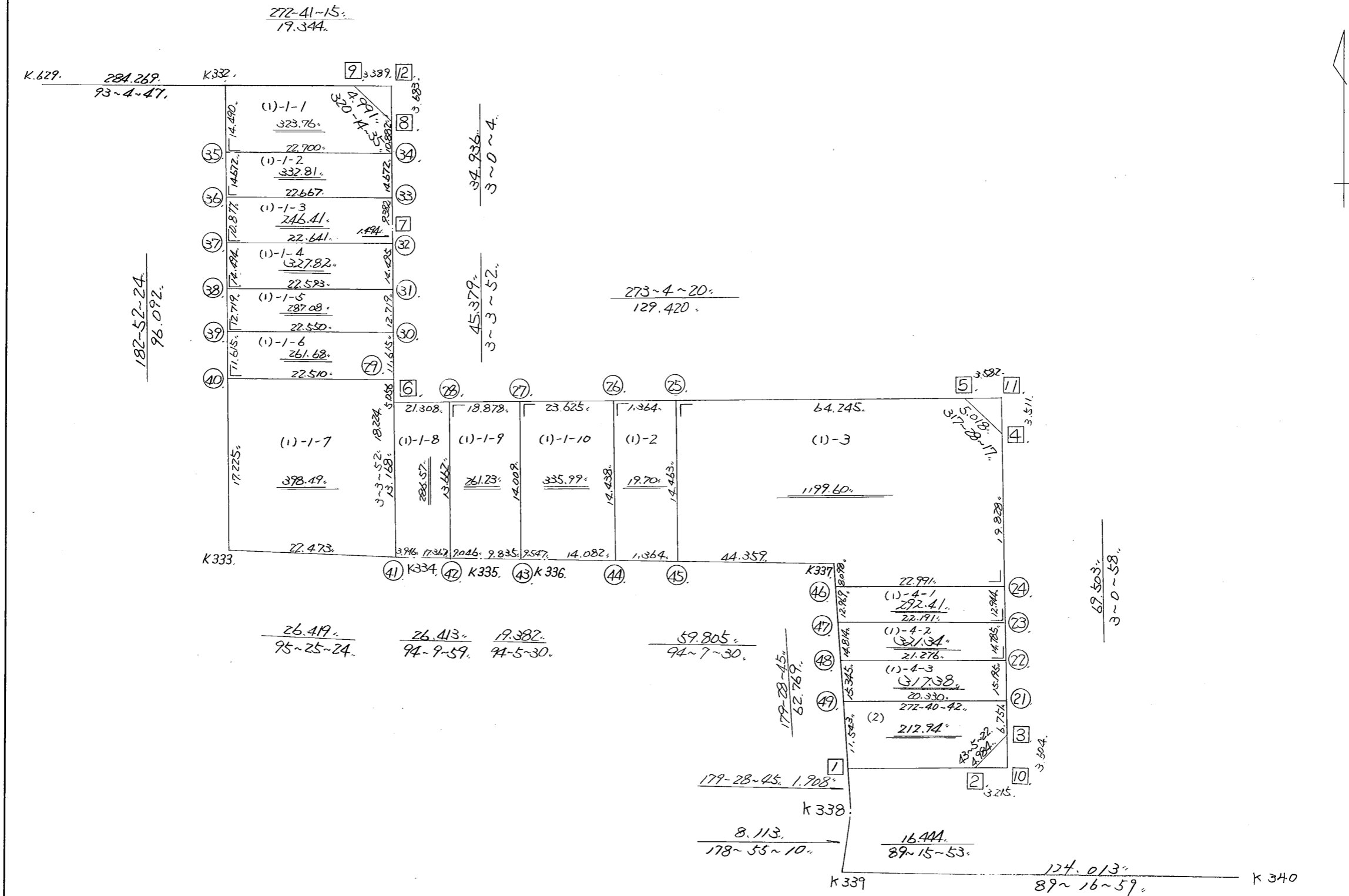


略 ☒

街区面積 = 54225.341₂ m²
 画地面積 = 54225.211₄



街区点番号 1 ~ 12 筆界点番号 21 ~ 49 画地番号 (1) ~ (2)

*** メンセキ ケイサン (ハイイウキヨホウ) ***

チクメイ ... ミヤコタチク トチクカクセイリシキヨウ

セイリ NO... 152BL //

NO.	NO.	ANGLE	AZIMUTH	LENGTH	DX	*	DY	*	X	Y	DMD	2A	カ-フ"メンセキ
K.337	152BL- 1 //		179 28 45						-131724.582	-69237.988			
152BL- 1	152BL- 2 //	89 47 8	89 15 53 //	16.444 //	0.211	0	16.443	0	-131724.371	-69221.545	17.014	3.589954	
152BL- 2	152BL- 3 //	133 49 29	43 5 22 //	4.984 //	3.640	0	3.405	0	-131720.731	-69218.140	36.862	134.177680	
152BL- 3	152BL- 4 //	139 55 36	3 0 58 //	69.503 //	69.407	0	3.657	0	-131651.324	-69214.483	43.924	3048.633068	
152BL- 4	152BL- 5 //	134 27 19	317 28 17 //	5.018 //	3.698	0	-3.392	0	-131647.626	-69217.875	44.189	163.410922	
152BL+ 5	152BL- 6 //	135 36 3	273 4 20 //	129.420 //	6.936	0	-129.234	0	-131640.690	-69347.109	-88.437	-613.399032	
152BL+ 6	152BL- 7 //	269 59 32	3 3 52 //	45.379 //	45.314	0	2.426	0	-131595.376	-69344.683	-215.245	-9753.611930	
152BL- 7	152BL- 8 //	179 56 12	3 0 4 //	34.936 //	34.888	0	1.829	0	-131560.488	-69342.854	-210.990	-7361.019120	
152BL- 8	152BL- 9 //	137 14 31	320 14 35 //	4.991 //	3.837	0	-3.192	0	-131556.651	-69346.046	-212.353	-814.798461	
152BL- 9	K.332 //	132 26 40	272 41 15 //	19.344 //	0.907	0	-19.323	0	-131555.744	-69365.369	-234.868	-213.025276	
K.332	K.333 //	90 11 9	182 52 24 //	96.092 //	-95.971	0	-4.817	0	-131651.715	-69370.186	-259.008	24857.256768	
K.333	K.334 //	92 33 0	95 25 24 //	26.419 //	-2.497	0	26.301	0	-131654.212	-69343.885	-237.524	593.097428	
K.334	K.335 //	178 44 35	94 9 59 //	26.413 //	-1.919	0	26.343	0	-131656.131	-69317.542	-184.880	354.784720	
K.335	K.336 //	179 55 31	94 5 30 //	19.382 //	-1.383	0	19.333	0	-131657.514	-69298.209	-139.204	192.519132	
K.336	K.337 //	180 2 0	94 7 30 //	59.805 //	-4.302	0	59.650	0	-131661.816	-69238.559	-60.221	259.070742	
K.337	152BL- 1 //	265 21 15	179 28 45 //	62.769 //	-62.766	0	0.571	0	-131724.582	-69237.988	0.000	0.000000	
TOTAL..	ソツカクスク= 15	2340	0 0		620.899	0.000	0 //	0 //			ハイイウキキ=	10850.686595	
											1/2=	5425.34	+0.00
											メンセキ=	5425.34 //	

*** メンセキ ケイサン (ハイオウキヨホウ) ***

チクメイ ... ミヤコタチク トチクカクセイリシキヨウ

セリ NO... 152BL(1)-1-1/

NO.	NO.	ANGLE	AZIMUTH			LENGTH	DX	*	DY	*	X	Y	DMD	2A	カ-フメキ
K.332	152BL-35✓		182 52 24								-131570.216	-69366.095			
152BL-35	152BL-34✓	90 0 0	92 52 24✓		22.700✓	-1.138	0	22.671	0	-131571.354	-69343.424	21.945	-24.973410		
152BL-34	152BL-8✓	90 7 40	3 0 4✓		10.882✓	10.867	-1	0.570	0	-131560.488	-69342.854	45.186	490.991076		
152BL-8	152BL-9✓	137 14 31	320 14 35✓		4.991✓	3.837	0	-3.192	0	-131556.651	-69346.046	42.564	163.318068		
152BL-9	K.332✓	132 26 40	272 41 15✓		19.344✓	0.907	0	-19.323	0	-131555.744	-69365.369	20.049	18.184443		
K.332	152BL-35✓	90 11 9	182 52 24✓		14.490✓	-14.472	0	-0.726	0	-131570.216	-69366.095	0.000	0.000000		
TOTAL..	ツツカクスウ= 5	540 0 0			72.407	0.001	-1✓	0.000	0✓			ハイメキ=	647.520177		
												1/2=	323.76	+0.00	
												メキ=	323.76✓		

セリ NO... 152BL(1)-2-2/

152BL-35	152BL-36✓		182 52 24								-131584.870	-69366.831			
152BL-36	152BL-33✓	90 0 0	92 52 24✓		22.667✓	-1.136	0	22.639	0	-131586.006	-69344.192	21.903	-24.881808		
152BL-33	152BL-34✓	90 7 40	3 0 4✓		14.672✓	14.652	0	0.768	0	-131571.354	-69343.424	45.310	663.882120		
152BL-34	152BL-35✓	89 52 20	272 52 24✓		22.700✓	1.138	0	-22.671	0	-131570.216	-69366.095	23.407	26.637166		
152BL-35	152BL-36✓	90 0 0	182 52 24✓		14.672✓	-14.654	0	-0.735	-1	-131584.870	-69366.831	0.000	0.000000		
TOTAL..	ツツカクスウ= 4	360 0 0			74.711	0.000	0✓	0.001	-1✓			ハイメキ=	665.637478		
												1/2=	332.81	+0.00	
												メキ=	332.81✓		

*** メンセキ ケイサン (ハ^ニイオウキヨホウ) ***

チクメイ ... ミヤコタ^ニチク トチクカクセイリシ^ニキ^ニヨウ

セリ NO... 152BL(1)-1-3^ニ

NO.	NO.	ANGLE	AZIMUTH	LENGTH	DX	*	DY	*	X	Y	DMD	2A	カ-フ ^ニ メンセキ
152BL-36	152BL-37		182 52 24						-131595.733	-69367.376			
152BL-37	152BL-32 ^ニ ✓	90 0 0	92 52 24 ^ニ ✓	22.641 ^ニ ✓	-1.135	0	22.613	0	-131596.868	-69344.763	22.068	-25.047180	
152BL-32	152BL-7 ^ニ ✓	90 11 28	3 3 52 ^ニ ✓	1.494 ^ニ ✓	1.492	0	0.080	0	-131595.376	-69344.683	44.761	66.783412	
152BL-7	152BL-33 ^ニ ✓	179 56 12	3 0 4 ^ニ ✓	9.382 ^ニ ✓	9.369	1	0.491	0	-131586.006	-69344.192	45.332	424.760840	
152BL-33	152BL-36 ^ニ ✓	89 52 20	272 52 24 ^ニ ✓	22.667 ^ニ ✓	1.136	0	-22.639	0	-131584.870	-69366.831	23.184	26.337024	
152BL-36	152BL-37 ^ニ ✓	90 0 0	182 52 24 ^ニ ✓	10.877 ^ニ ✓	-10.863	0	-0.545	0	-131595.733	-69367.376	0.000	0.000000	
TOTAL..	ソツカクスク= 5	540 0 0		67.061	-0.001	1 ^ニ ✓	0.000	0 ^ニ ✓			ハ ^ニ イメンセキ=	492.834096	
											1/2=	246.41	+0.00
											メンセキ=	246.41 ^ニ ✓	

セリ NO... 152BL(1)-1-4^ニ

152BL-37	152BL-38		182 52 24						-131610.209	-69368.103			
152BL-38	152BL-31 ^ニ ✓	90 0 0	92 52 24 ^ニ ✓	22.593 ^ニ ✓	-1.133	0	22.565	0	-131611.342	-69345.538	21.838	-24.742454	
152BL-31	152BL-32 ^ニ ✓	90 11 28	3 3 52 ^ニ ✓	14.495 ^ニ ✓	14.474	0	0.775	0	-131596.868	-69344.763	45.178	653.906372	
152BL-32	152BL-37 ^ニ ✓	89 48 32	272 52 24 ^ニ ✓	22.641 ^ニ ✓	1.135	0	-22.613	0	-131595.733	-69367.376	23.340	26.490900	
152BL-37	152BL-38 ^ニ ✓	90 0 0	182 52 24 ^ニ ✓	14.494 ^ニ ✓	-14.476	0	-0.727	0	-131610.209	-69368.103	0.000	0.000000	
TOTAL..	ソツカクスク= 4	360 0 0		74.223	0.000	0 ^ニ ✓	0.000	0 ^ニ ✓			ハ ^ニ イメンセキ=	655.654818	
											1/2=	327.82	+0.00
											メンセキ=	327.82 ^ニ ✓	

*** メンセキ ケイサン (ハ"イオウキヨホウ) ***

チクメイ ... ミヤコタ"チク トチクカクセイリシ"キ"ヨウ

レイ NO... 152BL(1)-~~5~~-~~5~~'

NO.	NO.	ANGLE	AZIMUTH	LENGTH	DX	*	DY	*	X	Y	DMD	2A	カ-フ"メンセキ
152BL-38	152BL-39✓		182 52 24						-131622.912	-69368.740			
152BL-39	152BL-30✓	90 0 0	92 52 24✓	22.550✓	-1.130	0	22.522	0	-131624.042	-69346.218	21.885	-24.730050	
152BL-30	152BL-31✓	90 11 28	3 3 52✓	12.719✓	12.701	-1	0.680	0	-131611.342	-69345.538	45.087	572.604900	
152BL-31	152BL-38✓	89 48 32	272 52 24✓	22.593✓	1.133	0	-22.565	0	-131610.209	-69368.103	23.202	26.287866	
152BL-38	152BL-39✓	90 0 0	182 52 24✓	12.719✓	-12.703	0	-0.638	1	-131622.912	-69368.740	0.000	0.000000	
TOTAL..	ツツカクスウ= 4	360 0 0		70.581	0.001	-1✓	-0.001	1✓			ハ"イメンセキ=	574.162716	
											1/2=	287.08	+0.00
											メンセキ=	287.08 ✓	

レイ NO... 152BL(1)-~~6~~-~~6~~'

152BL-39	152BL-40✓		182 52 24						-131634.512	-69369.322			
152BL-40	152BL-29✓	90 0 0	92 52 24✓	22.510✓	-1.128	0	22.482	1	-131635.640	-69346.839	21.901	-24.704328	
152BL-29	152BL-30✓	90 11 28	3 3 52✓	11.615✓	11.598	0	0.621	0	-131624.042	-69346.218	45.005	521.967990	
152BL-30	152BL-39✓	89 48 32	272 52 24✓	22.550✓	1.130	0	-22.522	0	-131622.912	-69368.740	23.104	26.107520	
152BL-39	152BL-40✓	90 0 0	182 52 24✓	11.615✓	-11.600	0	-0.582	0	-131634.512	-69369.322	0.000	0.000000	
TOTAL..	ツツカクスウ= 4	360 0 0		68.290	0.000	0✓	-0.001	1✓			ハ"イメンセキ=	523.371182	
											1/2=	261.68	+0.00
											メンセキ=	261.68 ✓	

*** ムセキ ケイサン (ハイオウキヨホウ) ***

チクメイ ... ミヤコタチク トチクカクセイリシキヨウ

レイ NO... 152BL(1)-~~7~~-7

NO.	NO.	ANGLE	AZIMUTH	LENGTH	DX	*	DY	*	X	Y	DMD	2A	カ-フムセキ
152BL-40	K.333✓		182 52 24						-131651.715	-69370.186			
K.333	152BL-41✓	92 33 0	95 25 24✓	22.473✓	-2.124	0	22.372	1	-131653.839	-69347.813	21.509	-45.685116	
152BL-41	152BL-29✓	87 38 28	3 3 52✓	18.224✓	18.198	1	0.974	0	-131635.640	-69346.839	44.856	816.334344	
152BL-29	152BL-40✓	89 48 32	272 52 24✓	22.510✓	1.128	0	-22.482	-1	-131634.512	-69369.322	23.347	26.335416	
152BL-40	K.333✓	90 0 0	182 52 24✓	17.225✓	-17.203	0	-0.863	-1	-131651.715	-69370.186	0.000	0.000000	
TOTAL..	ツツカクスウ= 4	360 0 0		80.432	-0.001	1✓	0.001	-1✓			ハイムセキ=	796.984644	
											1/2=	398.49	+0.00
											ムセキ=	398.49✓	

レイ NO... 152BL(1)-~~8~~-8

152BL- 6	152BL-41✓		183 3 52						-131653.839	-69347.813			
152BL-41	K.334✓	92 21 32	95 25 24✓	3.946✓	-0.373	0	3.928	0	-131654.212	-69343.885	3.224	-1.202552	
K.334	152BL-42✓	178 44 35	94 9 59✓	17.367✓	-1.262	0	17.321	0	-131655.474	-69326.564	24.473	-30.884926	
152BL-42	152BL-28✓	88 54 21	3 4 20✓	13.662✓	13.642	0	0.732	0	-131641.832	-69325.832	42.526	580.139692	
152BL-28	152BL- 6✓	90 0 0	273 4 20✓	21.308✓	1.142	0	-21.277	0	-131640.690	-69347.109	21.981	25.102302	
152BL- 6	152BL-41✓	89 59 32	183 3 52✓	13.168✓	-13.149	0	-0.704	0	-131653.839	-69347.813	0.000	0.000000	
TOTAL..	ツツカクスウ= 5	540 0 0		69.451	0.000	0✓	0.000	0✓			ハイムセキ=	573.154516	
											1/2=	286.57	+0.00
											ムセキ=	286.57✓	

*** メンセキ ケイサン (ハイオウキヨホウ) ***

チクメイ ... ミヤコタチク トチクカクセイリシキヨウ

セイリ NO... 152BL(1)-~~9~~-9

NO.	NO.	ANGLE	AZIMUTH	LENGTH	DX	*	DY	*	X	Y	DMD	2A	カーブメンセキ
152BL-28	152BL-42✓		183 4 20						-131655.474	-69326.564			
152BL-42	K.335✓	91 5 39	94 9 59✓	9.046✓	-0.657	0	9.022	0	-131656.131	-69317.542	8.290	-5.446530	
	K.335	152BL-43✓	179 55 31 94 5 30✓	9.835✓	-0.702	0	9.810	0	-131656.833	-69307.732	27.122	-19.039644	
152BL-43	152BL-27✓	88 58 50	3 4 20✓	14.009✓	13.989	0	0.751	0	-131642.844	-69306.981	37.683	527.147487	
152BL-27	152BL-28✓	90 0 0	273 4 20✓	18.878✓	1.012	0	-18.851	0	-131641.832	-69325.832	19.583	19.817996	
152BL-28	152BL-42✓	90 0 0	183 4 20✓	13.662✓	-13.642	0	-0.732	0	-131655.474	-69326.564	0.000	0.000000	
TOTAL..	ツツカクスウ= 5	540 0 0		65.430	0.000	0	0.000	0			ハイメンセキ=	522.479309	
											1/2=	261.23	+0.00
											メンセキ=	261.23✓	

セイリ NO... 152BL(1)-~~10~~-10

152BL-27	152BL-43✓		183 4 20						-131656.833	-69307.732			
152BL-43	K.336✓	91 1 10	94 5 30✓	9.547✓	-0.681	0	9.523	0	-131657.514	-69298.209	8.772	-5.973732	
	K.336	152BL-44✓	180 2 0 94 7 30✓	14.082✓	-1.013	0	14.046	0	-131658.527	-69284.163	32.341	-32.761433	
152BL-44	152BL-26✓	88 56 50	3 4 20✓	14.438✓	14.417	0	0.774	-1	-131644.110	-69283.390	47.160	679.905720	
152BL-26	152BL-27✓	90 0 0	273 4 20✓	23.625✓	1.266	0	-23.591	0	-131642.844	-69306.981	24.342	30.816972	
152BL-27	152BL-43✓	90 0 0	183 4 20✓	14.009✓	-13.989	0	-0.751	0	-131656.833	-69307.732	0.000	0.000000	
TOTAL..	ツツカクスウ= 5	540 0 0		75.701	0.000	0	0.001	-1			ハイメンセキ=	671.987527	
											1/2=	335.99	+0.00
											メンセキ=	335.99✓	

*** 欠セキ ケイサン (ハイイウキヨホウ) ***

チクメイ ... ミヤコタチク トチクカクセイリシキヨウ

セリ NO... 152BL(1)-2

NO.	NO.	ANGLE	AZIMUTH	LENGTH	DX	*	DY	*	X	Y	DMD	2A	カ-ク'欠セキ
152BL-26	152BL-44		183 4 20						-131658.527	-69284.163			
152BL-44	152BL-45	91 3 10	94 7 30	1.364	-0.098	0	1.360	0	-131658.625	-69282.803	0.587	-0.057526	
152BL-45	152BL-25	88 56 50	3 4 20	14.463	14.442	0	0.775	0	-131644.183	-69282.028	2.722	39.311124	
152BL-25	152BL-26	90 0 0	273 4 20	1.364	0.073	0	-1.362	0	-131644.110	-69283.390	2.135	0.155855	
152BL-26	152BL-44	90 0 0	183 4 20	14.438	-14.417	0	-0.774	1	-131658.527	-69284.163	0.000	0.000000	
TOTAL..	ソツカクスウ= 4	360 0 0		31.629	0.000	0	-0.001	1			ハイイウキヨホウ=	39.409453	
											1/2=	19.70	+0.00
											欠セキ=	19.70	

セリ NO... 152BL(1)-3

152BL-25	152BL-45		183 4 20						-131658.625	-69282.803			
152BL-45	K.337	91 3 10	94 7 30	44.359	-3.191	0	44.244	0	-131661.816	-69238.559	43.469	-138.709579	
	K.337	265 21 15	179 28 45	8.098	-8.098	0	0.074	0	-131669.914	-69238.485	87.787	-710.899126	
152BL-46	152BL-24	93 32 13	93 0 58	22.991	-1.210	0	22.959	0	-131671.124	-69215.526	110.820	-134.092200	
152BL-24	152BL- 4	90 0 0	3 0 58	19.828	19.801	-1	1.043	0	-131651.324	-69214.483	134.822	2669.475600	
152BL- 4	152BL- 5	134 27 19	317 28 17	5.018	3.698	0	-3.392	0	-131647.626	-69217.875	132.473	489.885154	
152BL- 5	152BL-25	135 36 3	273 4 20	64.245	3.443	0	-64.153	0	-131644.183	-69282.028	64.928	223.547104	
152BL-25	152BL-45	90 0 0	183 4 20	14.463	-14.442	0	-0.775	0	-131658.625	-69282.803	0.000	0.000000	
TOTAL..	ソツカクスウ= 7	900 0 0		179.002	0.001	-1	0.000	0			ハイイウキヨホウ=	2399.206953	
											1/2=	1199.60	+0.00
											欠セキ=	1199.60	

*** メンセキ ケイサン (ハイオウキヨホウ) ***

チクメイ ... ミヤコタマチク トチクカクセイリシキヨウ

セリ NO... 152BL(1)-4- /

NO.	NO.	ANGLE	AZIMUTH	LENGTH	DX	*	DY	*	X	Y.	DMD	2A	カ-クメンセキ
152BL-46	152BL-47		179 28 45						-131682.882	-69238.367			
152BL-47	152BL-23	93 32 13	93 0 58	22.191	-1.168	0	22.160	0	-131684.050	-69216.207	22.278	-26.020704	
152BL-23	152BL-24	90 0 0	3 0 58	12.944	12.926	0	0.681	0	-131671.124	-69215.526	45.119	583.208194	
152BL-24	152BL-46	90 0 0	273 0 58	22.991	1.210	0	-22.959	0	-131669.914	-69238.485	22.841	27.637610	
152BL-46	152BL-47	86 27 47	179 28 45	12.969	-12.968	0	0.118	0	-131682.882	-69238.367	0.000	0.000000	
TOTAL...	ソツカクスク= 4	360 0 0		71.095	0.000	0	0.000	0			ハイメンセキ=	584.825100	
											1/2=	292.41	+0.00
											メンセキ=	292.41	

セリ NO... 152BL(1)-4- 2

152BL-47	152BL-48		179 28 45						-131697.695	-69238.232			
152BL-48	152BL-22	93 32 13	93 0 58	21.276	-1.119	-1	21.247	0	-131698.815	-69216.985	21.382	-23.947840	
152BL-22	152BL-23	90 0 0	3 0 58	14.785	14.765	0	0.778	0	-131684.050	-69216.207	43.407	640.904355	
152BL-23	152BL-47	90 0 0	273 0 58	22.191	1.168	0	-22.160	0	-131682.882	-69238.367	22.025	25.725200	
152BL-47	152BL-48	86 27 47	179 28 45	14.814	-14.813	0	0.135	0	-131697.695	-69238.232	0.000	0.000000	
TOTAL...	ソツカクスク= 4	360 0 0		73.066	0.001	-1	0.000	0			ハイメンセキ=	642.681715	
											1/2=	321.34	+0.00
											メンセキ=	321.34	

*** ムツセキ ケイサン (ハイオウキヨホウ) ***

チクメイ ... ミヤコタチク トチクカクイリシキヨウ

セリ NO... 152BL(1)-4-3

NO.	NO.	ANGLE	AZIMUTH	LENGTH	DX	*	DY	*	X	Y	DMD	2A	カ-フムツセキ
152BL-48	152BL-49		179 28 45						-131713.039	-69238.093			
152BL-49	152BL-21	93 11 57	92 40 42	20.330	-0.950	0	20.308	0	-131713.989	-69217.785	20.447	-19.424650	
152BL-21	152BL-22	90 20 16	3 0 58	15.195	15.174	0	0.800	0	-131698.815	-69216.985	41.555	630.555570	
152BL-22	152BL-48	90 0 0	273 0 58	21.276	1.119	1	-21.247	0	-131697.695	-69238.232	21.108	23.640960	
152BL-48	152BL-49	86 27 47	179 28 45	15.345	-15.344	0	0.139	0	-131713.039	-69238.093	0.000	0.000000	
TOTAL..	ソツカクスウ= 4	360 0 0		72.146	-0.001	1	0.000	0			ハイムツセキ=	634.771880	
											1/2=	317.38	+0.00
											ムツセキ=	317.38	

セリ NO... 152BL(2)

152BL-49	152BL- 1		179 28 45						-131724.582	-69237.988			
152BL- 1	152BL- 2	89 47 8	89 15 53	16.444	0.211	0	16.443	0	-131724.371	-69221.545	16.548	3.491628	
152BL- 2	152BL- 3	133 49 29	43 5 22	4.984	3.640	0	3.405	0	-131720.731	-69218.140	36.396	132.481440	
152BL- 3	152BL-21	139 55 36	3 0 58	6.751	6.742	0	0.355	0	-131713.989	-69217.785	40.156	270.731752	
152BL-21	152BL-49	89 39 44	272 40 42	20.330	0.950	0	-20.308	0	-131713.039	-69238.093	20.203	19.192850	
152BL-49	152BL- 1	86 48 3	179 28 45	11.543	-11.543	0	0.105	0	-131724.582	-69237.988	0.000	0.000000	
TOTAL..	ソツカクスウ= 5	540 0 0		60.052	0.000	0	0.000	0			ハイムツセキ=	425.897670	
											1/2=	212.94	+0.00
											ムツセキ=	212.94	

*** ケツコウ トラハ入 ***

チクメイ ... ミヤコタチク トチクカクセイリシキヨウ

NO.	NO.	ANGLE	*	AZIMUTH	LENGTH	DX	*	DY	*	X	Y	NO.
	152BL- 3									-131720.731	-69218.140	152BL- 3
152BL- 3	152BL-21 ✓			3 0 58 ✓	6.751 ✓	6.742	0	0.355	0	-131713.989	-69217.785	152BL-21
152BL-21	152BL-22 ✓	180 0 0		3 0 58 ✓	15.195 ✓	15.174	0	0.800	0	-131698.815	-69216.985	152BL-22
152BL-22	152BL-23 ✓	180 0 0		3 0 58 ✓	14.785 ✓	14.765	0	0.778	0	-131684.050	-69216.207	152BL-23
152BL-23	152BL-24 ✓	180 0 0		3 0 58 ✓	12.944 ✓	12.926	0	0.681	0	-131671.124	-69215.526	152BL-24
152BL-24	152BL- 4 ✓	180 0 0		3 0 58 ✓	19.828 ✓	19.801	-1	1.043	0	-131651.324	-69214.483	152BL- 4
	TOTAL..	720 0 0			69.503 ✓	69.408	-1 ✓	3.657	0 ✓			
	152BL- 5									-131647.626	-69217.875	152BL- 5
152BL- 5	152BL-25 ✓			273 4 20 ✓	64.245 ✓	3.443	0	-64.153	0	-131644.183	-69282.028	152BL-25
152BL-25	152BL-26 ✓	180 0 0		273 4 20 ✓	1.364 ✓	0.073	0	-1.362	0	-131644.110	-69283.390	152BL-26
152BL-26	152BL-27 ✓	180 0 0		273 4 20 ✓	23.625 ✓	1.266	0	-23.591	0	-131642.844	-69306.981	152BL-27
152BL-27	152BL-28 ✓	180 0 0		273 4 20 ✓	18.878 ✓	1.012	0	-18.851	0	-131641.832	-69325.832	152BL-28
152BL-28	152BL- 6 ✓	180 0 0		273 4 20 ✓	21.308 ✓	1.142	0	-21.277	0	-131640.690	-69347.109	152BL- 6
	TOTAL..	720 0 0			129.420 ✓	6.936	0 ✓	-129.234	0 ✓			
	152BL- 6									-131640.690	-69347.109	152BL- 6
152BL- 6	152BL-29 ✓			3 3 52 ✓	5.056 ✓	5.049	1	0.270	0	-131635.640	-69346.839	152BL-29
152BL-29	152BL-30 ✓	180 0 0		3 3 52 ✓	11.615 ✓	11.598	0	0.621	0	-131624.042	-69346.218	152BL-30
152BL-30	152BL-31 ✓	180 0 0		3 3 52 ✓	12.719 ✓	12.701	-1	0.680	0	-131611.342	-69345.538	152BL-31
152BL-31	152BL-32 ✓	180 0 0		3 3 52 ✓	14.495 ✓	14.474	0	0.775	0	-131596.868	-69344.763	152BL-32
152BL-32	152BL- 7 ✓	180 0 0		3 3 52 ✓	1.494 ✓	1.492	0	0.080	0	-131595.376	-69344.683	152BL- 7
	TOTAL..	720 0 0			45.379 ✓	45.314	0 ✓	2.426	0 ✓			

*** ケツコウ トラハ入 ***

チクメイ ... ミヤコタチク トチクカクセイリシキヨウ

NO.	NO.	ANGLE	*	AZIMUTH	LENGTH	DX	*	DY	*	X	Y	NO.
	152BL- 7									-131595.376	-69344.683	152BL- 7
152BL- 7	152BL-33			3 0 4	9.382	9.369	1	0.491	0	-131586.006	-69344.192	152BL-33
152BL-33	152BL-34	180 0 0		3 0 4	14.672	14.652	0	0.768	0	-131571.354	-69343.424	152BL-34
152BL-34	152BL- 8	180 0 0		3 0 4	10.882	10.867	-1	0.570	0	-131560.488	-69342.854	152BL- 8
	TOTAL...	360 0 0			34.936	34.888	0	1.829	0			
	K.332									-131555.744	-69365.369	K.332
K.332	152BL-35			182 52 24	14.490	-14.472	0	-0.726	0	-131570.216	-69366.095	152BL-35
152BL-35	152BL-36	180 0 0		182 52 24	14.672	-14.654	0	-0.735	-1	-131584.870	-69366.831	152BL-36
152BL-36	152BL-37	180 0 0		182 52 24	10.877	-10.863	0	-0.545	0	-131595.733	-69367.376	152BL-37
152BL-37	152BL-38	180 0 0		182 52 24	14.494	-14.476	0	-0.727	0	-131610.209	-69368.103	152BL-38
152BL-38	152BL-39	180 0 0		182 52 24	12.719	-12.703	0	-0.638	1	-131622.912	-69368.740	152BL-39
152BL-39	152BL-40	180 0 0		182 52 24	11.615	-11.600	0	-0.582	0	-131634.512	-69369.322	152BL-40
152BL-40	K.333	180 0 0		182 52 24	17.225	-17.203	0	-0.863	-1	-131651.715	-69370.186	K.333
	TOTAL...	1080 0 0			96.092	-95.971	0	-4.816	-1			
	K.333									-131651.715	-69370.186	K.333
K.333	152BL-41			95 25 24	22.473	-2.124	0	22.372	1	-131653.839	-69347.813	152BL-41
152BL-41	K.334	180 0 0		95 25 24	3.946	-0.373	0	3.928	0	-131654.212	-69343.885	K.334
	TOTAL...	180 0 0			26.419	-2.497	0	26.300	1			
	K.334									-131654.212	-69343.885	K.334
K.334	152BL-42			94 9 59	17.367	-1.262	0	17.321	0	-131655.474	-69326.564	152BL-42
152BL-42	K.335	180 0 0		94 9 59	9.046	-0.657	0	9.022	0	-131656.131	-69317.542	K.335

*** ケツコウ トラハース ***

チクメイ ... ミヤコタチク トチクカクセイリシキヨウ

NO.	NO.	ANGLE *	AZIMUTH	LENGTH	DX	DY	X	Y	NO.
	TOTAL...	180 0 0		26.413	-1.919	26.343			
	K.335						-131656.131	-69317.542	K.335
K.335	152BL-43		94 5 30	9.835	-0.702	9.810	-131656.833	-69307.732	152BL-43
152BL-43	K.336	180 0 0	94 5 30	9.547	-0.681	9.523	-131657.514	-69298.209	K.336
	TOTAL...	180 0 0		19.382	-1.383	19.333			
	K.336						-131657.514	-69298.209	K.336
K.336	152BL-44		94 7 30	14.082	-1.013	14.046	-131658.527	-69284.163	152BL-44
152BL-44	152BL-45	180 0 0	94 7 30	1.364	-0.098	1.360	-131658.625	-69282.803	152BL-45
152BL-45	K.337	180 0 0	94 7 30	44.359	-3.191	44.244	-131661.816	-69238.559	K.337
	TOTAL...	360 0 0		59.805	-4.302	59.650			
	K.337						-131661.816	-69238.559	K.337
K.337	152BL-46		179 28 45	8.098	-8.098	0.074	-131669.914	-69238.485	152BL-46
152BL-46	152BL-47	180 0 0	179 28 45	12.969	-12.968	0.118	-131682.882	-69238.367	152BL-47
152BL-47	152BL-48	180 0 0	179 28 45	14.814	-14.813	0.135	-131697.695	-69238.232	152BL-48
152BL-48	152BL-49	180 0 0	179 28 45	15.345	-15.344	0.139	-131713.039	-69238.093	152BL-49
152BL-49	152BL- 1	180 0 0	179 28 45	11.543	-11.543	0.105	-131724.582	-69237.988	152BL- 1
	TOTAL...	720 0 0		62.769	-62.766	0.571			