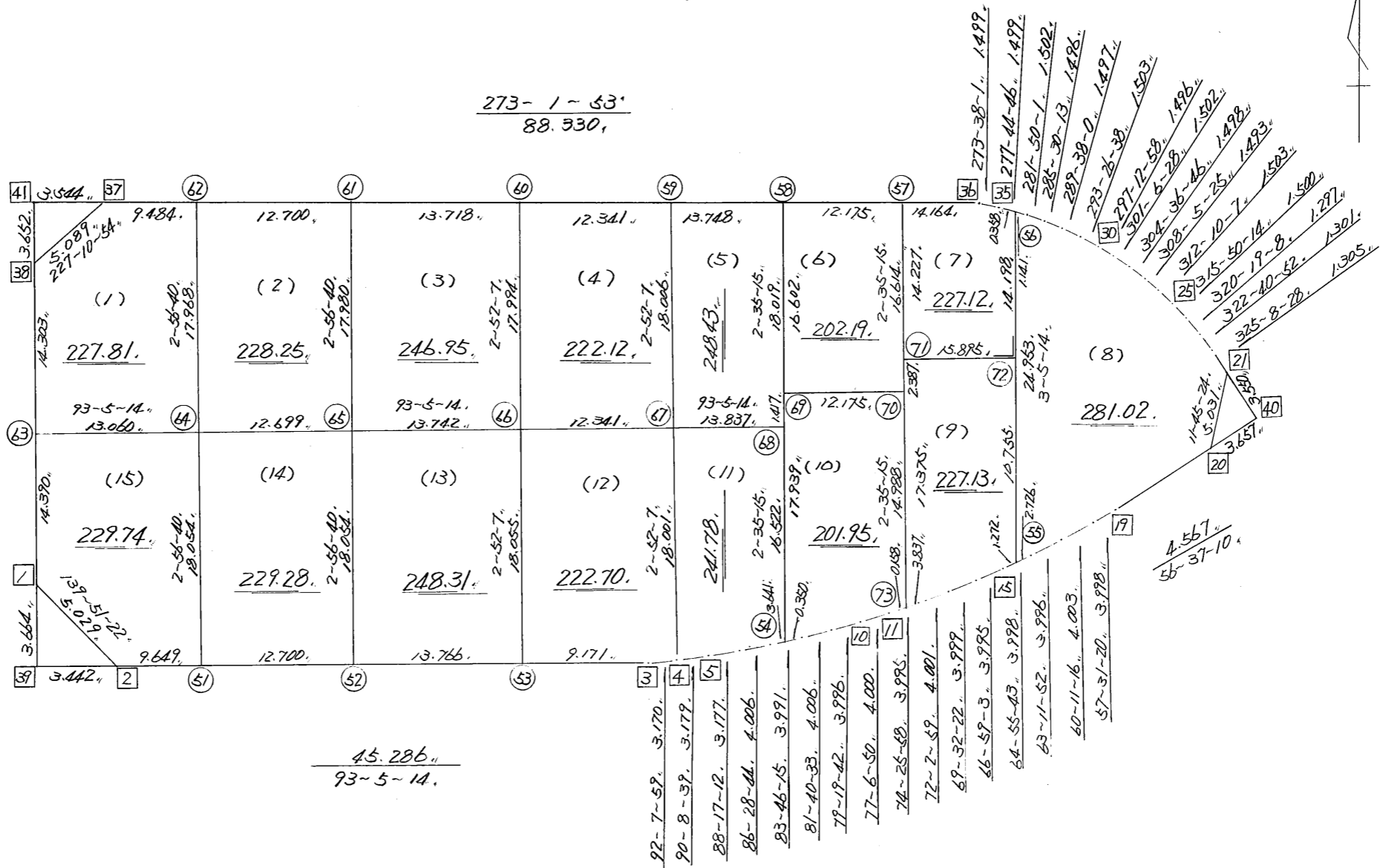


略 図

街区面積 = $\frac{3484.82}{1}$ m²
 画地面積 = $\frac{3484.28}{1}$

$\frac{183-2 \sim 41}{28.693}$



街区点番号 $\frac{1}{41}$ 筆界点番号 (51) ~ (73) 画地番号 (1) ~ (15)

*** メンセキ ケイサン (ハイオウキヨホウ) ***

チクメイ ... ミヤコタチク トチクカクセイリシキキヨウ

セリ NO... 153BL

| NO. | NO. | ANGLE | AZIMUTH | LENGTH | DX | * | DY | * | X | Y | DMD | 2A | カーブメンセキ |
|----------|----------|-----------|-----------|--------|--------|---|--------|---|-------------|------------|---------|-------------|---------|
| 153BL-38 | 153BL- 1 | | 183 2 41 | | | | | | -131680.519 | -69208.020 | | | |
| 153BL- 1 | 153BL- 2 | 136 48 41 | 139 51 22 | 5.029 | -3.844 | 0 | 3.242 | 0 | -131684.363 | -69204.778 | 1.718 | -6.603992 | |
| 153BL- 2 | 153BL- 3 | 133 13 52 | 93 5 14 | 45.286 | -2.439 | 0 | 45.220 | 0 | -131686.802 | -69159.558 | 50.180 | -122.389020 | |
| 153BL- 3 | 153BL- 4 | 179 2 45 | 92 7 59 | 3.170 | -0.118 | 0 | 3.168 | 0 | -131686.920 | -69156.390 | 98.568 | -11.631024 | |
| 153BL- 4 | 153BL- 5 | 178 0 40 | 90 8 39 | 3.179 | -0.008 | 0 | 3.179 | 0 | -131686.928 | -69153.211 | 104.915 | -0.839320 | |
| 153BL- 5 | 153BL- 6 | 178 8 33 | 88 17 12 | 3.177 | 0.095 | 0 | 3.176 | 0 | -131686.833 | -69150.035 | 111.270 | 10.570650 | |
| 153BL- 6 | 153BL- 7 | 178 11 32 | 86 28 44 | 4.006 | 0.246 | 0 | 3.998 | 0 | -131686.587 | -69146.037 | 118.444 | 29.137224 | |
| 153BL- 7 | 153BL- 8 | 177 17 31 | 83 46 15 | 3.991 | 0.433 | 0 | 3.967 | 0 | -131686.154 | -69142.070 | 126.409 | 54.735097 | |
| 153BL- 8 | 153BL- 9 | 177 54 18 | 81 40 33 | 4.006 | 0.580 | 0 | 3.964 | 0 | -131685.574 | -69138.106 | 134.340 | 77.917200 | |
| 153BL- 9 | 153BL-10 | 177 39 9 | 79 19 42 | 3.996 | 0.740 | 0 | 3.927 | 0 | -131684.834 | -69134.179 | 142.231 | 105.250940 | |
| 153BL-10 | 153BL-11 | 177 47 8 | 77 6 50 | 4.000 | 0.892 | 0 | 3.899 | 0 | -131683.942 | -69130.280 | 150.057 | 133.850844 | |
| 153BL-11 | 153BL-12 | 177 19 8 | 74 25 58 | 3.995 | 1.072 | 0 | 3.848 | 0 | -131682.870 | -69126.432 | 157.804 | 169.165888 | |
| 153BL-12 | 153BL-13 | 177 37 1 | 72 2 59 | 4.001 | 1.233 | 0 | 3.806 | 0 | -131681.637 | -69122.626 | 165.458 | 204.009714 | |
| 153BL-13 | 153BL-14 | 177 29 23 | 69 32 22 | 3.999 | 1.398 | 0 | 3.747 | 0 | -131680.239 | -69118.879 | 173.011 | 241.869378 | |
| 153BL-14 | 153BL-15 | 177 26 41 | 66 59 3 | 3.995 | 1.562 | 0 | 3.677 | 0 | -131678.677 | -69115.202 | 180.435 | 281.839470 | |
| 153BL-15 | 153BL-16 | 177 56 40 | 64 55 43 | 3.998 | 1.694 | 0 | 3.621 | 0 | -131676.983 | -69111.581 | 187.733 | 318.019702 | |
| 153BL-16 | 153BL-17 | 178 16 9 | 63 11 52 | 3.996 | 1.802 | 0 | 3.567 | 0 | -131675.181 | -69108.014 | 194.921 | 351.247642 | |
| 153BL-17 | 153BL-18 | 176 59 24 | 60 11 16 | 4.003 | 1.990 | 0 | 3.473 | 0 | -131673.191 | -69104.541 | 201.961 | 401.902390 | |
| 153BL-18 | 153BL-19 | 177 20 4 | 57 31 20 | 3.998 | 2.147 | 0 | 3.373 | 0 | -131671.044 | -69101.168 | 208.807 | 448.308629 | |
| 153BL-19 | 153BL-20 | 179 5 50 | 56 37 10 | 4.567 | 2.513 | 0 | 3.814 | 0 | -131668.531 | -69097.354 | 215.994 | 542.792922 | |
| 153BL-20 | 153BL-21 | 135 8 14 | 11 45 24 | 5.031 | 4.925 | 0 | 1.025 | 0 | -131663.606 | -69096.329 | 220.833 | 1087.602525 | |
| 153BL-21 | 153BL-22 | 133 23 4 | 325 8 28 | 1.305 | 1.071 | 0 | -0.746 | 0 | -131662.535 | -69097.075 | 221.112 | 236.810952 | |
| 153BL-22 | 153BL-23 | 177 32 24 | 322 40 52 | 1.301 | 1.035 | 0 | -0.789 | 0 | -131661.500 | -69097.864 | 219.577 | 227.262195 | |
| 153BL-23 | 153BL-24 | 177 38 16 | 320 19 8 | 1.297 | 0.998 | 0 | -0.828 | 0 | -131660.502 | -69098.692 | 217.960 | 217.524080 | |

*** メンセキ ケイサン (ハイオウキヨホウ) ***

チクメイ ... ミヤコタチク トチクカクセイリシキヨウ

セリ NO... 153BL

| NO. | NO. | ANGLE | AZIMUTH | LENGTH | DX | * | DY | * | X | Y | DMD | 2A | カ-フメンセキ |
|----------|------------|---------------------|---------|---------|-------|---------|-------|---------|---|------------------------|---------|-------------|---------|
| 153BL-24 | 153BL-25 | 175 31 6 315 50 14 | ✓ | 1.500 | ✓ | 1.076 | 0 | -1.045 | 0 | -131659.426 -69099.737 | 216.087 | 232.509612 | |
| 153BL-25 | 153BL-26 | 176 19 53 312 10 7 | ✓ | 1.503 | ✓ | 1.009 | 0 | -1.114 | 0 | -131658.417 -69100.851 | 213.928 | 215.853352 | |
| 153BL-26 | 153BL-27 | 175 55 18 308 5 25 | ✓ | 1.493 | ✓ | 0.921 | 0 | -1.175 | 0 | -131657.496 -69102.026 | 211.639 | 194.919519 | |
| 153BL-27 | 153BL-28 | 176 31 21 304 36 46 | ✓ | 1.498 | ✓ | 0.851 | 0 | -1.233 | 0 | -131656.645 -69103.259 | 209.231 | 178.055581 | |
| 153BL-28 | 153BL-29 | 176 29 42 301 6 28 | ✓ | 1.502 | ✓ | 0.776 | 0 | -1.286 | 0 | -131655.869 -69104.545 | 206.712 | 160.408512 | |
| 153BL-29 | 153BL-30 | 176 6 30 297 12 58 | ✓ | 1.496 | ✓ | 0.684 | 0 | -1.330 | 0 | -131655.185 -69105.875 | 204.096 | 139.601664 | |
| 153BL-30 | 153BL-31 | 176 13 40 293 26 38 | ✓ | 1.503 | ✓ | 0.598 | 0 | -1.379 | 0 | -131654.587 -69107.254 | 201.387 | 120.429426 | |
| 153BL-31 | 153BL-32 | 176 11 22 289 38 0 | ✓ | 1.497 | ✓ | 0.503 | 0 | -1.410 | 0 | -131654.084 -69108.664 | 198.598 | 99.894794 | |
| 153BL-32 | 153BL-33 | 175 52 13 285 30 13 | ✓ | 1.496 | ✓ | 0.400 | 0 | -1.442 | 0 | -131653.684 -69110.106 | 195.746 | 78.298400 | |
| 153BL-33 | 153BL-34 | 176 19 48 281 50 1 | ✓ | 1.502 | ✓ | 0.308 | 0 | -1.470 | 0 | -131653.376 -69111.576 | 192.834 | 59.392872 | |
| 153BL-34 | 153BL-35 | 175 54 45 277 44 46 | ✓ | 1.499 | ✓ | 0.202 | 0 | -1.485 | 0 | -131653.174 -69113.061 | 189.879 | 38.355558 | |
| 153BL-35 | 153BL-36 | 175 53 15 273 38 1 | ✓ | 1.499 | ✓ | 0.095 | 0 | -1.496 | 0 | -131653.079 -69114.557 | 186.898 | 17.755310 | |
| 153BL-36 | 153BL-37 | 179 23 52 273 1 53 | ✓ | 88.330 | ✓ | 4.671 | 0 | -88.206 | 0 | -131648.408 -69202.763 | 97.196 | 454.002516 | |
| 153BL-37 | 153BL-38 | 134 9 1 227 10 54 | ✓ | 5.089 | ✓ | -3.459 | 0 | -3.733 | 0 | -131651.867 -69206.496 | 5.257 | -18.183963 | |
| 153BL-38 | 153BL- 1 | 135 51 47 183 2 41 | ✓ | 28.693 | ✓ | -28.652 | 0 | -1.524 | 0 | -131680.519 -69208.020 | 0.000 | 0.000000 | |
| TOTAL.. | ソツカクスウ= 38 | 6480 | 0 0 | 265.426 | 0.000 | 0 | 0.000 | 0 | | | ハイメンセキ= | 6969.647239 | |
| | | | | | | | | | | | 1/2= | 3484.82 | +0.00 |
| | | | | | | | | | | | メンセキ= | 3484.82 | ✓ |

*** メンセキ ケイサン (ハイオウキヨホウ) ***

チクメイ ... ミヤコタチク トチクカクセイリシキヨウ

| | | | | | | | | | | | | セリ NO... 153BL(1)✓ | | |
|----------|-----------|-----------|------------|---------|---------|-----|--------|----|-------------|------------|---------|--------------------|---------|--|
| NO. | NO. | ANGLE | AZIMUTH | LENGTH | DX | * | DY | * | X | Y | DMD | 2A | カーブメンセキ | |
| 153BL-38 | 153BL-63✓ | | 183 2 41 | | | | | | -131666.150 | -69207.256 | | | | |
| 153BL-63 | 153BL-64✓ | 90 2 33 | 93 5 14✓ | 13.060✓ | -0.703 | 0 | 13.041 | 0 | -131666.853 | -69194.215 | 12.281 | -8.633543 | | |
| 153BL-64 | 153BL-62✓ | 89 51 26 | 2 56 40✓ | 17.968✓ | 17.944 | 0 | 0.923 | 0 | -131648.909 | -69193.292 | 26.245 | 470.940280 | | |
| 153BL-62 | 153BL-37✓ | 90 5 13 | 273 1 53✓ | 9.484✓ | 0.502 | -1 | -9.471 | 0 | -131648.408 | -69202.763 | 17.697 | 8.866197 | | |
| 153BL-37 | 153BL-38✓ | 134 9 1 | 227 10 54✓ | 5.089✓ | -3.459 | 0 | -3.733 | 0 | -131651.867 | -69206.496 | 4.493 | -15.541287 | | |
| 153BL-38 | 153BL-63✓ | 135 51 47 | 183 2 41✓ | 14.303✓ | -14.283 | 0 | -0.760 | 0 | -131666.150 | -69207.256 | 0.000 | 0.000000 | | |
| TOTAL.. | ソツカクスウ= 5 | 540 0 0 | | 59.904 | 0.001 | -1✓ | 0.000 | 0✓ | | | ハイメンセキ= | 455.631647 | | |
| | | | | | | | | | | | 1/2= | 227.81 | +0.00 | |
| | | | | | | | | | | | メンセキ= | 227.81✓ | | |

| | | | | | | | | | | | | セリ NO... 153BL(2)✓ | | |
|----------|-----------|----------|------------|---------|---------|----|---------|----|-------------|------------|---------|--------------------|-------|--|
| 153BL-62 | 153BL-64✓ | | 182 56 40 | | | | | | -131666.853 | -69194.215 | | | | |
| 153BL-64 | 153BL-65✓ | 90 8 34 | 93 5 14✓ | 12.699✓ | -0.684 | 0 | 12.681 | 0 | -131667.537 | -69181.534 | 11.758 | -8.042472 | | |
| 153BL-65 | 153BL-61✓ | 89 51 26 | 2 56 40✓ | 17.980✓ | 17.956 | 0 | 0.924 | 0 | -131649.581 | -69180.610 | 25.363 | 455.418028 | | |
| 153BL-61 | 153BL-62✓ | 90 5 13 | 273 1 53✓ | 12.700✓ | 0.672 | 0 | -12.682 | 0 | -131648.909 | -69193.292 | 13.605 | 9.142560 | | |
| 153BL-62 | 153BL-64✓ | 89 54 47 | 182 56 40✓ | 17.968✓ | -17.944 | 0 | -0.923 | 0 | -131666.853 | -69194.215 | 0.000 | 0.000000 | | |
| TOTAL.. | ソツカクスウ= 4 | 360 0 0 | | 61.347 | 0.000 | 0✓ | 0.000 | 0✓ | | | ハイメンセキ= | 456.518116 | | |
| | | | | | | | | | | | 1/2= | 228.25 | +0.00 | |
| | | | | | | | | | | | メンセキ= | 228.25✓ | | |

*** ムンセキ ケイサン (ハイオウキヨホウ) ***

チクメイ ... ミヤコタマチク トチクカクセイリシキヨウ

セリ NO... 153BL(3)

| NO. | NO. | ANGLE | AZIMUTH | LENGTH | DX | * | DY | * | X | Y | DMD | 2A | カ-フムンセキ |
|----------|-----------|----------|-----------|--------|---------|---|---------|---|-------------|------------|---------|------------|---------|
| 153BL-61 | 153BL-65 | | 182 56 40 | | | | | | -131667.537 | -69181.534 | | | |
| 153BL-65 | 153BL-66 | 90 8 34 | 93 5 14 | 13.742 | -0.740 | 0 | 13.722 | 0 | -131668.277 | -69167.812 | 12.798 | -9.470520 | |
| 153BL-66 | 153BL-60 | 89 46 53 | 2 52 7 | 17.994 | 17.971 | 0 | 0.901 | 0 | -131650.306 | -69166.911 | 27.421 | 492.782791 | |
| 153BL-60 | 153BL-61 | 90 9 46 | 273 1 53 | 13.718 | 0.725 | 0 | -13.699 | 0 | -131649.581 | -69180.610 | 14.623 | 10.601675 | |
| 153BL-61 | 153BL-65 | 89 54 47 | 182 56 40 | 17.980 | -17.956 | 0 | -0.924 | 0 | -131667.537 | -69181.534 | 0.000 | 0.000000 | |
| TOTAL.. | ソツカクスウ= 4 | 360 0 0 | | 63.434 | 0.000 | 0 | 0.000 | 0 | | | ハイムンセキ= | 493.913946 | |
| | | | | | | | | | | | 1/2= | 246.95 | +0.00 |
| | | | | | | | | | | | ムンセキ= | 246.95 | |

セリ NO... 153BL(4)

| | | | | | | | | | | | | | |
|----------|-----------|----------|----------|--------|---------|---|---------|---|-------------|------------|---------|------------|-------|
| 153BL-60 | 153BL-66 | | 182 52 7 | | | | | | -131668.277 | -69167.812 | | | |
| 153BL-66 | 153BL-67 | 90 13 7 | 93 5 14 | 12.341 | -0.665 | 0 | 12.323 | 0 | -131668.942 | -69155.489 | 11.422 | -7.595630 | |
| 153BL-67 | 153BL-59 | 89 46 53 | 2 52 7 | 18.006 | 17.983 | 0 | 0.901 | 0 | -131650.959 | -69154.588 | 24.646 | 443.209018 | |
| 153BL-59 | 153BL-60 | 90 9 46 | 273 1 53 | 12.341 | 0.653 | 0 | -12.324 | 1 | -131650.306 | -69166.911 | 13.224 | 8.635272 | |
| 153BL-60 | 153BL-66 | 89 50 14 | 182 52 7 | 17.994 | -17.971 | 0 | -0.901 | 0 | -131668.277 | -69167.812 | 0.000 | 0.000000 | |
| TOTAL.. | ソツカクスウ= 4 | 360 0 0 | | 60.682 | 0.000 | 0 | -0.001 | 1 | | | ハイムンセキ= | 444.248660 | |
| | | | | | | | | | | | 1/2= | 222.12 | +0.00 |
| | | | | | | | | | | | ムンセキ= | 222.12 | |

*** メンセキ ケイサン (ハイオウキヨホウ) ***

チクメイ ... ミヤコタチク トチクカクセイリシキヨウ

レイ NO ... 153BL(5)

| NO. | NO. | ANGLE | AZIMUTH | LENGTH | DX | * | DY | * | X | Y | DMD | 2A | カーブメンセキ |
|----------|-----------|----------|----------|--------|---------|---|---------|---|-------------|------------|---------|------------|---------|
| 153BL-59 | 153BL-67 | | 182 52 7 | | | | | | -131668.942 | -69155.489 | | | |
| 153BL-67 | 153BL-68 | 90 13 7 | 93 5 14 | 13.837 | -0.745 | 0 | 13.817 | 0 | -131669.687 | -69141.672 | 12.916 | -9.622420 | |
| 153BL-68 | 153BL-58 | 89 30 1 | 2 35 15 | 18.019 | 18.001 | 0 | 0.813 | 0 | -131651.686 | -69140.859 | 27.546 | 495.855546 | |
| 153BL-58 | 153BL-59 | 90 26 38 | 273 1 53 | 13.748 | 0.727 | 0 | -13.729 | 0 | -131650.959 | -69154.588 | 14.630 | 10.636010 | |
| 153BL-59 | 153BL-67 | 89 50 14 | 182 52 7 | 18.006 | -17.983 | 0 | -0.901 | 0 | -131668.942 | -69155.489 | 0.000 | 0.000000 | |
| TOTAL.. | ソツカクスク= 4 | 360 0 0 | | 63.610 | 0.000 | 0 | 0.000 | 0 | | | ハイメンセキ= | 496.869136 | |
| | | | | | | | | | | | 1/2= | 248.43 | +0.00 |
| | | | | | | | | | | | メンセキ= | 248.43 | |

レイ NO ... 153BL(6)

| | | | | | | | | | | | | | |
|----------|-----------|----------|-----------|--------|---------|---|---------|---|-------------|------------|---------|------------|-------|
| 153BL-58 | 153BL-69 | | 182 35 15 | | | | | | -131668.271 | -69141.608 | | | |
| 153BL-69 | 153BL-70 | 90 29 59 | 93 5 14 | 12.175 | -0.656 | 0 | 12.157 | 0 | -131668.927 | -69129.451 | 11.408 | -7.483648 | |
| 153BL-70 | 153BL-57 | 89 30 1 | 2 35 15 | 16.614 | 16.597 | 0 | 0.750 | 0 | -131652.330 | -69128.701 | 24.315 | 403.556055 | |
| 153BL-57 | 153BL-58 | 90 26 38 | 273 1 53 | 12.175 | 0.644 | 0 | -12.158 | 0 | -131651.686 | -69140.859 | 12.907 | 8.312108 | |
| 153BL-58 | 153BL-69 | 89 33 22 | 182 35 15 | 16.602 | -16.585 | 0 | -0.749 | 0 | -131668.271 | -69141.608 | 0.000 | 0.000000 | |
| TOTAL.. | ソツカクスク= 4 | 360 0 0 | | 57.566 | 0.000 | 0 | 0.000 | 0 | | | ハイメンセキ= | 404.384515 | |
| | | | | | | | | | | | 1/2= | 202.19 | +0.00 |
| | | | | | | | | | | | メンセキ= | 202.19 | |

*** メンセキ カイサン (ハイオウキヨホウ) ***

チクメイ ... ミヤコタチク トチクカクセイリシキヨウ

セリ NO... 153BL(7)

| NO. | NO. | ANGLE | AZIMUTH | LENGTH | DX | * | DY | * | X | Y | DMD | 2A | カ-フメンセキ |
|----------|-----------|-----------|-----------|--------|---------|----|---------|---|-------------|------------|--------|--------------------|---------|
| 153BL-57 | 153BL-71 | | 182 35 15 | | | | | | -131666.543 | -69129.343 | | | |
| 153BL-71 | 153BL-72 | 90 29 59 | 93 5 14 | 15.895 | -0.856 | 0 | 15.872 | 0 | -131667.399 | -69113.471 | 15.230 | -13.036880 | |
| 153BL-72 | 153BL-56 | 90 0 0 | 3 5 14 | 14.198 | 14.177 | 0 | 0.765 | 0 | -131653.222 | -69112.706 | 31.867 | 451.778459 | |
| 153BL-56 | 153BL-35 | 94 39 32 | 277 44 46 | 0.358 | 0.048 | 0 | -0.355 | 0 | -131653.174 | -69113.061 | 32.277 | 1.549296 | |
| 153BL-35 | 153BL-36 | 175 53 15 | 273 38 1 | 1.499 | 0.095 | 0 | -1.496 | 0 | -131653.079 | -69114.557 | 30.426 | 2.890470 | |
| 153BL-36 | 153BL-57 | 179 23 52 | 273 1 53 | 14.164 | 0.749 | 0 | -14.144 | 0 | -131652.330 | -69128.701 | 14.786 | 11.074714 | |
| 153BL-57 | 153BL-71 | 89 33 22 | 182 35 15 | 14.227 | -14.212 | -1 | -0.642 | 0 | -131666.543 | -69129.343 | 0.000 | 0.000000 | |
| TOTAL.. | ソツカク入ウ= 6 | 720 0 0 | | 60.341 | 0.001 | -1 | 0.000 | 0 | | | | ハイメンセキ= 454.256059 | |
| | | | | | | | | | | | | 1/2= 227.12 | +0.00 |
| | | | | | | | | | | | | メンセキ= 227.12 | |

*** メンセキ ケイサン (ハイオウキヨホウ) ***

チクメイ ... ミヤコタチク トチクカクセイリシキヨウ

セリ NO... 153BL(8)✓

| NO. | NO. | ANGLE | AZIMUTH | LENGTH | DX | * | DY | * | X | Y | DMD | 2A | カーブメンセキ |
|----------|------------|-----------|------------|---------|---------|----|--------|----|-------------|------------|---------|------------|---------|
| 153BL-56 | 153BL-55✓ | | 183 5 14 | | | | | | -131678.138 | -69114.050 | | | |
| 153BL-55 | 153BL-16✓ | 61 50 29 | 64 55 43✓ | 2.726✓ | 1.155 | 0 | 2.469 | 0 | -131676.983 | -69111.581 | 1.125 | 1.299375 | |
| 153BL-16 | 153BL-17✓ | 178 16 9 | 63 11 52✓ | 3.996✓ | 1.802 | 0 | 3.567 | 0 | -131675.181 | -69108.014 | 7.161 | 12.904122 | |
| 153BL-17 | 153BL-18✓ | 176 59 24 | 60 11 16✓ | 4.003✓ | 1.990 | 0 | 3.473 | 0 | -131673.191 | -69104.541 | 14.201 | 28.259990 | |
| 153BL-18 | 153BL-19✓ | 177 20 4 | 57 31 20✓ | 3.998✓ | 2.147 | 0 | 3.373 | 0 | -131671.044 | -69101.168 | 21.047 | 45.187909 | |
| 153BL-19 | 153BL-20✓ | 179 5 50 | 56 37 10✓ | 4.567✓ | 2.513 | 0 | 3.814 | 0 | -131668.531 | -69097.354 | 28.234 | 70.952042 | |
| 153BL-20 | 153BL-21✓ | 135 8 14 | 11 45 24✓ | 5.031✓ | 4.925 | 0 | 1.025 | 0 | -131663.606 | -69096.329 | 33.073 | 162.884525 | |
| 153BL-21 | 153BL-22✓ | 133 23 4 | 325 8 28✓ | 1.305✓ | 1.071 | 0 | -0.746 | 0 | -131662.535 | -69097.075 | 33.352 | 35.719992 | |
| 153BL-22 | 153BL-23✓ | 177 32 24 | 322 40 52✓ | 1.301✓ | 1.035 | 0 | -0.789 | 0 | -131661.500 | -69097.864 | 31.817 | 32.930595 | |
| 153BL-23 | 153BL-24✓ | 177 38 16 | 320 19 8✓ | 1.297✓ | 0.998 | 0 | -0.828 | 0 | -131660.502 | -69098.692 | 30.200 | 30.139600 | |
| 153BL-24 | 153BL-25✓ | 175 31 6 | 315 50 14✓ | 1.500✓ | 1.076 | 0 | -1.045 | 0 | -131659.426 | -69099.737 | 28.327 | 30.479852 | |
| 153BL-25 | 153BL-26✓ | 176 19 53 | 312 10 7✓ | 1.503✓ | 1.009 | 0 | -1.114 | 0 | -131658.417 | -69100.851 | 26.168 | 26.403512 | |
| 153BL-26 | 153BL-27✓ | 175 55 18 | 308 5 25✓ | 1.493✓ | 0.921 | 0 | -1.175 | 0 | -131657.496 | -69102.026 | 23.879 | 21.992559 | |
| 153BL-27 | 153BL-28✓ | 176 31 21 | 304 36 46✓ | 1.498✓ | 0.851 | 0 | -1.233 | 0 | -131656.645 | -69103.259 | 21.471 | 18.271821 | |
| 153BL-28 | 153BL-29✓ | 176 29 42 | 301 6 28✓ | 1.502✓ | 0.776 | 0 | -1.286 | 0 | -131655.869 | -69104.545 | 18.952 | 14.706752 | |
| 153BL-29 | 153BL-30✓ | 176 6 30 | 297 12 58✓ | 1.496✓ | 0.684 | 0 | -1.330 | 0 | -131655.185 | -69105.875 | 16.336 | 11.173824 | |
| 153BL-30 | 153BL-31✓ | 176 13 40 | 293 26 38✓ | 1.503✓ | 0.598 | 0 | -1.379 | 0 | -131654.587 | -69107.254 | 13.627 | 8.148946 | |
| 153BL-31 | 153BL-32✓ | 176 11 22 | 289 38 0✓ | 1.497✓ | 0.503 | 0 | -1.410 | 0 | -131654.084 | -69108.664 | 10.838 | 5.451514 | |
| 153BL-32 | 153BL-33✓ | 175 52 13 | 285 30 13✓ | 1.496✓ | 0.400 | 0 | -1.442 | 0 | -131653.684 | -69110.106 | 7.986 | 3.194400 | |
| 153BL-33 | 153BL-34✓ | 176 19 48 | 281 50 1✓ | 1.502✓ | 0.308 | 0 | -1.470 | 0 | -131653.376 | -69111.576 | 5.074 | 1.562792 | |
| 153BL-34 | 153BL-56✓ | 175 54 45 | 277 44 46✓ | 1.141✓ | 0.154 | 0 | -1.131 | 1 | -131653.222 | -69112.706 | 2.474 | 0.380996 | |
| 153BL-56 | 153BL-55✓ | 85 20 28 | 183 5 14✓ | 24.953✓ | -24.917 | 1 | -1.344 | 0 | -131678.138 | -69114.050 | 0.000 | 0.000000 | |
| TOTAL.. | ソツカクスウ= 21 | 3420 | 0 0 | 69.308 | -0.001 | 1✓ | -0.001 | 1✓ | | | ハイメンセキ= | 562.045118 | |
| | | | | | | | | | | | 1/2= | 281.02 | +0.00 |
| | | | | | | | | | | | メンセキ= | 281.02✓ | |

*** ムンセキ ケイサン (ハイイウキヨホウ) ***

チクメイ ... ミヤコタチク トチクカクセイリシキヨウ

| | | | | | | | | | | | セリ NO... 153BL(9)✓ | | |
|----------|-----------|-----------|------------|---------|---------|----|---------|-----|-------------|------------|--------------------|------------|---------|
| NO. | NO. | ANGLE | AZIMUTH | LENGTH | DX | * | DY | * | X | Y | DMD | 2A | カーブムンセキ |
| 153BL-71 | 153BL-73✓ | | 182 35 15 | | | | | | -131683.900 | -69130.128 | | | |
| 153BL-73 | 153BL-12✓ | 71 50 43 | 74 25 58✓ | 3.837✓ | 1.030 | 0 | 3.696 | 0 | -131682.870 | -69126.432 | 2.911 | 2.998330 | |
| 153BL-12 | 153BL-13✓ | 177 37 1 | 72 2 59✓ | 4.001✓ | 1.233 | 0 | 3.806 | 0 | -131681.637 | -69122.626 | 10.413 | 12.839229 | |
| 153BL-13 | 153BL-14✓ | 177 29 23 | 69 32 22✓ | 3.999✓ | 1.398 | 0 | 3.747 | 0 | -131680.239 | -69118.879 | 17.966 | 25.116468 | |
| 153BL-14 | 153BL-15✓ | 177 26 41 | 66 59 3✓ | 3.995✓ | 1.562 | 0 | 3.677 | 0 | -131678.677 | -69115.202 | 25.390 | 39.659180 | |
| 153BL-15 | 153BL-55✓ | 177 56 40 | 64 55 43✓ | 1.272✓ | 0.539 | 0 | 1.152 | 0 | -131678.138 | -69114.050 | 30.219 | 16.288041 | |
| 153BL-55 | 153BL-72✓ | 118 9 31 | 3 5 14✓ | 10.755✓ | 10.739 | 0 | 0.579 | 0 | -131667.399 | -69113.471 | 31.950 | 343.111050 | |
| 153BL-72 | 153BL-71✓ | 90 0 0 | 273 5 14✓ | 15.895✓ | 0.856 | 0 | -15.872 | 0 | -131666.543 | -69129.343 | 16.657 | 14.258392 | |
| 153BL-71 | 153BL-73✓ | 89 30 1 | 182 35 15✓ | 17.375✓ | -17.357 | 0 | -0.784 | -1 | -131683.900 | -69130.128 | 0.000 | 0.000000 | |
| TOTAL.. | ソツカクスウ= 8 | 1080 | 0 0 | 61.129 | 0.000 | 0✓ | 0.001 | -1✓ | | | ハイイウキヨホウ= | 454.270690 | |
| | | | | | | | | | | | 1/2= | 227.13 | +0.00 |
| | | | | | | | | | | | ムンセキ= | 227.13✓ | |

| | | | | | | | | | | | セリ NO... 153BL(10)✓ | | |
|----------|-----------|-----------|------------|---------|---------|----|---------|----|-------------|------------|---------------------|------------|-------|
| 153BL-69 | 153BL-54✓ | | 182 35 15 | | | | | | -131686.192 | -69142.418 | | | |
| 153BL-54 | 153BL- 8✓ | 81 11 0 | 83 46 15✓ | 0.350✓ | 0.038 | 0 | 0.348 | 0 | -131686.154 | -69142.070 | -0.462 | -0.017556 | |
| 153BL- 8 | 153BL- 9✓ | 177 54 18 | 81 40 33✓ | 4.006✓ | 0.580 | 0 | 3.964 | 0 | -131685.574 | -69138.106 | 3.850 | 2.233000 | |
| 153BL- 9 | 153BL-10✓ | 177 39 9 | 79 19 42✓ | 3.996✓ | 0.740 | 0 | 3.927 | 0 | -131684.834 | -69134.179 | 11.741 | 8.688340 | |
| 153BL-10 | 153BL-11✓ | 177 47 8 | 77 6 50✓ | 4.000✓ | 0.892 | 0 | 3.899 | 0 | -131683.942 | -69130.280 | 19.567 | 17.453764 | |
| 153BL-11 | 153BL-73✓ | 177 19 8 | 74 25 58✓ | 0.158✓ | 0.042 | 0 | 0.152 | 0 | -131683.900 | -69130.128 | 23.618 | 0.991956 | |
| 153BL-73 | 153BL-70✓ | 108 9 17 | 2 35 15✓ | 14.988✓ | 14.973 | 0 | 0.677 | 0 | -131668.927 | -69129.451 | 24.447 | 366.044931 | |
| 153BL-70 | 153BL-69✓ | 90 29 59 | 273 5 14✓ | 12.175✓ | 0.656 | 0 | -12.157 | 0 | -131668.271 | -69141.608 | 12.967 | 8.506352 | |
| 153BL-69 | 153BL-54✓ | 89 30 1 | 182 35 15✓ | 17.939✓ | -17.921 | 0 | -0.810 | 0 | -131686.192 | -69142.418 | 0.000 | 0.000000 | |
| TOTAL.. | ソツカクスウ= 8 | 1080 | 0 0 | 57.612 | 0.000 | 0✓ | 0.000 | 0✓ | | | ハイイウキヨホウ= | 403.900787 | |
| | | | | | | | | | | | 1/2= | 201.95 | +0.00 |
| | | | | | | | | | | | ムンセキ= | 201.95✓ | |

*** メンセキ ケイサン (ハイオウキヨホウ) ***

チクメイ ... ミヤコタチク トチクカクセイリシキヨウ

| | | | | | | | | | | | セリ NO... 153BL(11)✓ | | | | | | |
|----------|-----------|-----------|-----------|--|----------|---------|---|---------|----|-------------|---------------------|--------|-------------|------------|------------|-------|---------|
| NO. | NO. | ANGLE | | | AZIMUTH | | | LENGTH | DX | * | DY | * | X | Y | DMD | 2A | カーブメンセキ |
| 153BL-67 | 153BL- 4✓ | | | | 182 52 7 | | | | | | | | -131686.920 | -69156.390 | | | |
| 153BL- 4 | 153BL- 5✓ | 87 16 32 | 90 8 39✓ | | 3.179✓ | -0.008 | 0 | 3.179 | 0 | -131686.928 | -69153.211 | 2.278 | -0.018224 | | | | |
| 153BL- 5 | 153BL- 6✓ | 178 8 33 | 88 17 12✓ | | 3.177✓ | 0.095 | 0 | 3.176 | 0 | -131686.833 | -69150.035 | 8.633 | 0.820135 | | | | |
| 153BL- 6 | 153BL- 7✓ | 178 11 32 | 86 28 44✓ | | 4.006✓ | 0.246 | 0 | 3.998 | 0 | -131686.587 | -69146.037 | 15.807 | 3.888522 | | | | |
| 153BL- 7 | 153BL-54✓ | 177 17 31 | 83 46 15✓ | | 3.641✓ | 0.395 | 0 | 3.620 | -1 | -131686.192 | -69142.418 | 23.424 | 9.252480 | | | | |
| 153BL-54 | 153BL-68✓ | 98 49 0 | 2 35 15✓ | | 16.522✓ | 16.505 | 0 | 0.746 | 0 | -131669.687 | -69141.672 | 27.789 | 458.657445 | | | | |
| 153BL-68 | 153BL-67✓ | 90 29 59 | 273 5 14✓ | | 13.837✓ | 0.745 | 0 | -13.817 | 0 | -131668.942 | -69155.489 | 14.718 | 10.964910 | | | | |
| 153BL-67 | 153BL- 4✓ | 89 46 53 | 182 52 7✓ | | 18.001✓ | -17.978 | 0 | -0.901 | 0 | -131686.920 | -69156.390 | 0.000 | 0.000000 | | | | |
| TOTAL.. | ソツカクスウ= 7 | 900 0 0 | | | 62.363 | 0.000 | 0 | 0.001 | -1 | | | | | ハイメンセキ= | 483.565268 | | |
| | | | | | | | | | | | | | | 1/2= | 241.78 | +0.00 | |
| | | | | | | | | | | | | | | メンセキ= | 241.78✓ | | |

| | | | | | | | | | | | セリ NO... 153BL(12)✓ | | | | | | |
|-----------|-----------|----------|-----------|--|----------|---------|---|---------|----|-------------|---------------------|--------|-------------|------------|------------|-------|--|
| 153BL-66 | 153BL-53✓ | | | | 182 52 7 | | | | | | | | -131686.309 | -69168.715 | | | |
| 153BL-53 | 153BL- 3✓ | 90 13 7 | 93 5 14✓ | | 9.171✓ | -0.494 | 1 | 9.158 | -1 | -131686.802 | -69159.558 | 8.254 | -4.069222 | | | | |
| 153BL- 3 | 153BL- 4✓ | 179 2 45 | 92 7 59✓ | | 3.170✓ | -0.118 | 0 | 3.168 | 0 | -131686.920 | -69156.390 | 20.579 | -2.428322 | | | | |
| 153BL- 4 | 153BL-67✓ | 90 44 8 | 2 52 7✓ | | 18.001✓ | 17.978 | 0 | 0.901 | 0 | -131668.942 | -69155.489 | 24.648 | 443.121744 | | | | |
| 153BL-67 | 153BL-66✓ | 90 13 7 | 273 5 14✓ | | 12.341✓ | 0.665 | 0 | -12.323 | 0 | -131668.277 | -69167.812 | 13.226 | 8.795290 | | | | |
| 153BL- 66 | 153BL-53✓ | 89 46 53 | 182 52 7✓ | | 18.055✓ | -18.032 | 0 | -0.904 | 1 | -131686.309 | -69168.715 | 0.000 | 0.000000 | | | | |
| TOTAL.. | ソツカクスウ= 5 | 540 0 0 | | | 60.738 | -0.001 | 1 | 0.000 | 0 | | | | | ハイメンセキ= | 445.419490 | | |
| | | | | | | | | | | | | | | 1/2= | 222.70 | +0.00 | |
| | | | | | | | | | | | | | | メンセキ= | 222.70✓ | | |

*** メンセキ ケイサン (ハイオウキヨホウ) ***

チクメイ ... ミヤコタチク トチクカクセイリシキヨウ

セリ NO... 153BL(13)✓

| NO. | NO. | ANGLE | AZIMUTH | LENGTH | DX | * | DY | * | X | Y | DMD | 2A | カ-フメキ |
|----------|-----------|----------|------------|---------|---------|-----|---------|-----|-------------|------------|--------|------------|-------|
| 153BL-65 | 153BL-52✓ | | 182 56 40 | | | | | | -131685.567 | -69182.461 | | | |
| 153BL-52 | 153BL-53✓ | 90 8 34 | 93 5 14✓ | 13.766✓ | -0.741 | -1 | 13.746 | 0 | -131686.309 | -69168.715 | 12.819 | -9.511698 | |
| 153BL-53 | 153BL-66✓ | 89 46 53 | 2 52 7✓ | 18.055✓ | 18.032 | 0 | 0.904 | -1 | -131668.277 | -69167.812 | 27.468 | 495.302976 | |
| 153BL-66 | 153BL-65✓ | 90 13 7 | 273 5 14✓ | 13.742✓ | 0.740 | 0 | -13.722 | 0 | -131667.537 | -69181.534 | 14.649 | 10.840260 | |
| 153BL-65 | 153BL-52✓ | 89 51 26 | 182 56 40✓ | 18.054✓ | -18.030 | 0 | -0.927 | 0 | -131685.567 | -69182.461 | 0.000 | 0.000000 | |
| TOTAL.. | ソツカクスウ= 4 | 360 0 0 | | 63.617 | 0.001 | -1✓ | 0.001 | -1✓ | | | ハイメキ= | 496.631538 | |
| | | | | | | | | | | | 1/2= | 248.31 | +0.00 |
| | | | | | | | | | | | メキ= | 248.31✓ | |

セリ NO... 153BL(14)✓

| | | | | | | | | | | | | | |
|----------|-----------|----------|------------|---------|---------|----|---------|-----|-------------|------------|--------|------------|-------|
| 153BL-64 | 153BL-51✓ | | 182 56 40 | | | | | | -131684.883 | -69195.143 | | | |
| 153BL-51 | 153BL-52✓ | 90 8 34 | 93 5 14✓ | 12.700✓ | -0.684 | 0 | 12.682 | 0 | -131685.567 | -69182.461 | 11.754 | -8.039736 | |
| 153BL-52 | 153BL-65✓ | 89 51 26 | 2 56 40✓ | 18.054✓ | 18.030 | 0 | 0.927 | 0 | -131667.537 | -69181.534 | 25.363 | 457.294890 | |
| 153BL-65 | 153BL-64✓ | 90 8 34 | 273 5 14✓ | 12.699✓ | 0.684 | 0 | -12.681 | 0 | -131666.853 | -69194.215 | 13.609 | 9.308556 | |
| 153BL-64 | 153BL-51✓ | 89 51 26 | 182 56 40✓ | 18.054✓ | -18.030 | 0 | -0.927 | -1 | -131684.883 | -69195.143 | 0.000 | 0.000000 | |
| TOTAL.. | ソツカクスウ= 4 | 360 0 0 | | 61.507 | 0.000 | 0✓ | 0.001 | -1✓ | | | ハイメキ= | 458.563710 | |
| | | | | | | | | | | | 1/2= | 229.28 | +0.00 |
| | | | | | | | | | | | メキ= | 229.28✓ | |

*** ムセキ ケイサン (ハ"イウキヨホウ) ***

チクメイ ... ミヤコタ"チク トチクカクセイリシ"キ"ヨウ

セイリ NO... 153BL(15)✓

| NO. | NO. | ANGLE | AZIMUTH | LENGTH | DX | * | DY | * | X | Y | DMD | 2A | カ-フ"ムセキ |
|----------|-----------|-----------|------------|---------|---------|----|---------|----|-------------|------------|---------|------------|---------|
| 153BL-63 | 153BL- 1✓ | | 183 2 41 | | | | | | -131680.519 | -69208.020 | | | |
| 153BL- 1 | 153BL- 2✓ | 136 48 41 | 139 51 22✓ | 5.029✓ | -3.844 | 0 | 3.242 | 0 | -131684.363 | -69204.778 | 2.478 | -9.525432 | |
| 153BL- 2 | 153BL-51✓ | 133 13 52 | 93 5 14✓ | 9.649✓ | -0.520 | 0 | 9.635 | 0 | -131684.883 | -69195.143 | 15.355 | -7.984600 | |
| 153BL-51 | 153BL-64✓ | 89 51 26 | 2 56 40✓ | 18.054✓ | 18.030 | 0 | 0.927 | 1 | -131666.853 | -69194.215 | 25.918 | 467.301540 | |
| 153BL-64 | 153BL-63✓ | 90 8 34 | 273 5 14✓ | 13.060✓ | 0.703 | 0 | -13.041 | 0 | -131666.150 | -69207.256 | 13.805 | 9.704915 | |
| 153BL-63 | 153BL- 1✓ | 89 57 27 | 183 2 41✓ | 14.390✓ | -14.370 | 1 | -0.764 | 0 | -131680.519 | -69208.020 | 0.000 | 0.000000 | |
| TOTAL... | ソツカク入= 5 | 540 0 0 | | 60.182 | -0.001 | 1✓ | -0.001 | 1✓ | | | ハ"イムセキ= | 459.496423 | |
| | | | | | | | | | | | 1/2= | 229.74 | +0.00 |
| | | | | | | | | | | | ムセキ= | 229.74✓ | |

チクメイ ... ミヤコタチク トチクカクセイリシキヨウ

| NO. | NO. | ANGLE * | AZIMUTH | LENGTH | DX | * | DY | * | X | Y | NO. |
|----------|----------|---------|-----------|--------|--------|---|--------|----|-------------|------------|----------|
| | 153BL- 2 | | | | | | | | -131684.363 | -69204.778 | 153BL- 2 |
| 153BL- 2 | 153BL-51 | | 93 5 14 | 9.649 | -0.520 | 0 | 9.635 | 0 | -131684.883 | -69195.143 | 153BL-51 |
| 153BL-51 | 153BL-52 | 180 0 0 | 93 5 14 | 12.700 | -0.684 | 0 | 12.682 | 0 | -131685.567 | -69182.461 | 153BL-52 |
| 153BL-52 | 153BL-53 | 180 0 0 | 93 5 14 | 13.766 | -0.741 | 0 | 13.746 | -1 | -131686.308 | -69168.716 | 153BL-53 |
| 153BL-53 | 153BL- 3 | 180 0 0 | 93 5 14 | 9.171 | -0.494 | 0 | 9.158 | 0 | -131686.802 | -69159.558 | 153BL- 3 |
| | TOTAL.. | 540 0 0 | | 45.286 | -2.439 | 0 | 45.221 | -1 | | | |
| | 153BL- 7 | | | | | | | | -131686.587 | -69146.037 | 153BL- 7 |
| 153BL- 7 | 153BL-54 | | 83 46 15 | 3.641 | 0.395 | 0 | 3.620 | -1 | -131686.192 | -69142.418 | 153BL-54 |
| 153BL-54 | 153BL- 8 | 180 0 0 | 83 46 15 | 0.350 | 0.038 | 0 | 0.348 | 0 | -131686.154 | -69142.070 | 153BL- 8 |
| | TOTAL.. | 180 0 0 | | 3.991 | 0.433 | 0 | 3.968 | -1 | | | |
| | 153BL-11 | | | | | | | | -131683.942 | -69130.280 | 153BL-11 |
| 153BL-11 | 153BL-73 | | 74 25 58 | 0.158 | 0.042 | 0 | 0.152 | 0 | -131683.900 | -69130.128 | 153BL-73 |
| 153BL-73 | 153BL-12 | 180 0 0 | 74 25 58 | 3.837 | 1.030 | 0 | 3.696 | 0 | -131682.870 | -69126.432 | 153BL-12 |
| | TOTAL.. | 180 0 0 | | 3.995 | 1.072 | 0 | 3.848 | 0 | | | |
| | 153BL-15 | | | | | | | | -131678.677 | -69115.202 | 153BL-15 |
| 153BL-15 | 153BL-55 | | 64 55 43 | 1.272 | 0.539 | 0 | 1.152 | 0 | -131678.138 | -69114.050 | 153BL-55 |
| 153BL-55 | 153BL-16 | 180 0 0 | 64 55 43 | 2.726 | 1.155 | 0 | 2.469 | 0 | -131676.983 | -69111.581 | 153BL-16 |
| | TOTAL.. | 180 0 0 | | 3.998 | 1.694 | 0 | 3.621 | 0 | | | |
| | 153BL-34 | | | | | | | | -131653.376 | -69111.576 | 153BL-34 |
| 153BL-34 | 153BL-56 | | 277 44 46 | 1.141 | 0.154 | 0 | -1.131 | 1 | -131653.222 | -69112.706 | 153BL-56 |

チクメイ ... ミヤコタチク トチクカケイリシキヨウ

| NO. | NO. | ANGLE * | AZIMUTH | LENGTH | DX | * DY | * X | Y | NO. |
|----------|-----------|----------|------------|----------|---------|--------------|---------------|------------|----------|
| 153BL-56 | 153BL-35✓ | 180 0 0 | 277 44 46✓ | 0.358 ✓ | 0.048 | 0 -0.355 | 0 -131653.174 | -69113.061 | 153BL-35 |
| | TOTAL.. | 180 0 0 | | 1.499 ✓ | 0.202 | 0 ✓ -1.486 | 1 ✓ | | |
| | 153BL-36✓ | | | | | | -131653.079 | -69114.557 | 153BL-36 |
| 153BL-36 | 153BL-57✓ | | 273 1 53✓ | 14.164 ✓ | 0.749 | 0 -14.144 | 0 -131652.330 | -69128.701 | 153BL-57 |
| 153BL-57 | 153BL-58✓ | 180 0 0 | 273 1 53✓ | 12.175 ✓ | 0.644 | 0 -12.158 | 0 -131651.686 | -69140.859 | 153BL-58 |
| 153BL-58 | 153BL-59✓ | 180 0 0 | 273 1 53✓ | 13.748 ✓ | 0.727 | 0 -13.729 | 0 -131650.959 | -69154.588 | 153BL-59 |
| 153BL-59 | 153BL-60✓ | 180 0 0 | 273 1 53✓ | 12.341 ✓ | 0.653 | -1 -12.324 | 1 -131650.307 | -69166.911 | 153BL-60 |
| 153BL-60 | 153BL-61✓ | 180 0 0 | 273 1 53✓ | 13.718 ✓ | 0.725 | 0 -13.699 | 0 -131649.582 | -69180.610 | 153BL-61 |
| 153BL-61 | 153BL-62✓ | 180 0 0 | 273 1 53✓ | 12.700 ✓ | 0.672 | 0 -12.682 | 0 -131648.910 | -69193.292 | 153BL-62 |
| 153BL-62 | 153BL-37✓ | 180 0 0 | 273 1 53✓ | 9.484 ✓ | 0.502 | 0 -9.471 | 0 -131648.408 | -69202.763 | 153BL-37 |
| | TOTAL.. | 1080 0 0 | | 88.330 ✓ | 4.672 | -1 ✓ -88.207 | 1 ✓ | | |
| | 153BL-38✓ | | | | | | -131651.867 | -69206.496 | 153BL-38 |
| 153BL-38 | 153BL-63✓ | | 183 2 41✓ | 14.303 ✓ | -14.283 | 0 -0.760 | 0 -131666.150 | -69207.256 | 153BL-63 |
| 153BL-63 | 153BL- 1✓ | 180 0 0 | 183 2 41✓ | 14.390 ✓ | -14.370 | 1 -0.764 | 0 -131680.519 | -69208.020 | 153BL- 1 |
| | TOTAL.. | 180 0 0 | | 28.693 ✓ | -28.653 | 1 ✓ -1.524 | 0 ✓ | | |
| | 153BL-63✓ | | | | | | -131666.150 | -69207.256 | 153BL-63 |
| 153BL-63 | 153BL-64✓ | | 93 5 14✓ | 13.060 ✓ | -0.703 | -1 13.041 | 0 -131666.854 | -69194.215 | 153BL-64 |
| 153BL-64 | 153BL-65✓ | 180 0 0 | 93 5 14✓ | 12.699 ✓ | -0.684 | 0 12.681 | 0 -131667.538 | -69181.534 | 153BL-65 |
| 153BL-65 | 153BL-66✓ | 180 0 0 | 93 5 14✓ | 13.742 ✓ | -0.740 | 1 13.722 | 0 -131668.277 | -69167.812 | 153BL-66 |
| 153BL-66 | 153BL-67✓ | 180 0 0 | 93 5 14✓ | 12.341 ✓ | -0.665 | 0 12.323 | 0 -131668.942 | -69155.489 | 153BL-67 |
| 153BL-67 | 153BL-68✓ | 180 0 0 | 93 5 14✓ | 13.837 ✓ | -0.745 | 0 13.817 | 0 -131669.687 | -69141.672 | 153BL-68 |

チクメイ ... ミヤコタチク トチクカクセイリシキヨウ

| NO. | NO. | ANGLE * | AZIMUTH | LENGTH | DX | * | DY | * | X | Y | NO. |
|----------|-----------|---------|----------|---------|--------|------|--------|-----|-------------|------------|----------|
| | TOTAL.. | 720 0 0 | | 65.679% | -3.537 | 0 ✓ | 65.584 | 0 ✓ | | | |
| | 153BL-51% | | | | | | | | -131684.883 | -69195.143 | 153BL-51 |
| 153BL-51 | 153BL-64% | | 2 56 40% | 18.054% | 18.030 | -1 | 0.927 | 1 | -131666.854 | -69194.215 | 153BL-64 |
| 153BL-64 | 153BL-62% | 180 0 0 | 2 56 40% | 17.968% | 17.944 | 0 | 0.923 | 0 | -131648.910 | -69193.292 | 153BL-62 |
| | TOTAL.. | 180 0 0 | | 36.022% | 35.974 | -1 ✓ | 1.850 | 1 ✓ | | | |
| | 153BL-52% | | | | | | | | -131685.567 | -69182.461 | 153BL-52 |
| 153BL-52 | 153BL-65% | | 2 56 40% | 18.054% | 18.030 | -1 | 0.927 | 0 | -131667.538 | -69181.534 | 153BL-65 |
| 153BL-65 | 153BL-61% | 180 0 0 | 2 56 40% | 17.980% | 17.956 | 0 | 0.924 | 0 | -131649.582 | -69180.610 | 153BL-61 |
| | TOTAL.. | 180 0 0 | | 36.034% | 35.986 | -1 ✓ | 1.851 | 0 ✓ | | | |
| | 153BL-53% | | | | | | | | -131686.308 | -69168.716 | 153BL-53 |
| 153BL-53 | 153BL-66% | | 2 52 7% | 18.055% | 18.032 | -1 | 0.904 | 0 | -131668.277 | -69167.812 | 153BL-66 |
| 153BL-66 | 153BL-60% | 180 0 0 | 2 52 7% | 17.994% | 17.971 | -1 | 0.901 | 0 | -131650.307 | -69166.911 | 153BL-60 |
| | TOTAL.. | 180 0 0 | | 36.049% | 36.003 | -2 ✓ | 1.805 | 0 ✓ | | | |
| | 153BL-4% | | | | | | | | -131686.920 | -69156.390 | 153BL-4 |
| 153BL-4 | 153BL-67% | | 2 52 7% | 18.001% | 17.978 | 0 | 0.901 | 0 | -131668.942 | -69155.489 | 153BL-67 |
| 153BL-67 | 153BL-59% | 180 0 0 | 2 52 7% | 18.006% | 17.983 | 0 | 0.901 | 0 | -131650.959 | -69154.588 | 153BL-59 |
| | TOTAL.. | 180 0 0 | | 36.007% | 35.961 | 0 ✓ | 1.802 | 0 ✓ | | | |
| | 153BL-54% | | | | | | | | -131686.192 | -69142.418 | 153BL-54 |
| 153BL-54 | 153BL-68% | | 2 35 15% | 16.522% | 16.505 | 0 ✓ | 0.746 | 0 ✓ | -131669.687 | -69141.672 | 153BL-68 |

チクメイ ... ミヤコタチク トチクカケイリシキヨウ

| NO. | NO. | ANGLE * | AZIMUTH | LENGTH | DX | * | DY | * | X | Y | NO. |
|----------|----------|---------|---------|--------|--------|---|-------|---|-------------|------------|----------|
| 153BL-68 | 153BL-58 | 180 0 0 | 2 35 15 | 18.019 | 18.001 | 0 | 0.813 | 0 | -131651.686 | -69140.859 | 153BL-58 |
| | TOTAL.. | 180 0 0 | | 34.541 | 34.506 | 0 | 1.559 | 0 | | | |
| | 153BL-54 | | | | | | | | -131686.192 | -69142.418 | 153BL-54 |
| 153BL-54 | 153BL-69 | | 2 35 15 | 17.939 | 17.921 | 0 | 0.810 | 0 | -131668.271 | -69141.608 | 153BL-69 |
| 153BL-69 | 153BL-58 | 180 0 0 | 2 35 15 | 16.602 | 16.585 | 0 | 0.749 | 0 | -131651.686 | -69140.859 | 153BL-58 |
| | TOTAL.. | 180 0 0 | | 34.541 | 34.506 | 0 | 1.559 | 0 | | | |
| | 153BL-54 | | | | | | | | -131686.192 | -69142.418 | 153BL-54 |
| 153BL-54 | 153BL-68 | | 2 35 15 | 16.522 | 16.505 | 0 | 0.746 | 0 | -131669.687 | -69141.672 | 153BL-68 |
| 153BL-68 | 153BL-69 | 180 0 0 | 2 35 15 | 1.417 | 1.416 | 0 | 0.064 | 0 | -131668.271 | -69141.608 | 153BL-69 |
| 153BL-69 | 153BL-58 | 180 0 0 | 2 35 15 | 16.602 | 16.585 | 0 | 0.749 | 0 | -131651.686 | -69140.859 | 153BL-58 |
| | TOTAL.. | 360 0 0 | | 34.541 | 34.506 | 0 | 1.559 | 0 | | | |
| | 153BL-73 | | | | | | | | -131683.900 | -69130.128 | 153BL-73 |
| 153BL-73 | 153BL-70 | | 2 35 15 | 14.988 | 14.973 | 0 | 0.677 | 0 | -131668.927 | -69129.451 | 153BL-70 |
| 153BL-70 | 153BL-57 | 180 0 0 | 2 35 15 | 16.614 | 16.597 | 0 | 0.750 | 0 | -131652.330 | -69128.701 | 153BL-57 |
| | TOTAL.. | 180 0 0 | | 31.602 | 31.570 | 0 | 1.427 | 0 | | | |
| | 153BL-73 | | | | | | | | -131683.900 | -69130.128 | 153BL-73 |
| 153BL-73 | 153BL-71 | | 2 35 15 | 17.375 | 17.357 | 1 | 0.784 | 1 | -131666.542 | -69129.343 | 153BL-71 |
| 153BL-71 | 153BL-57 | 180 0 0 | 2 35 15 | 14.227 | 14.212 | 0 | 0.642 | 0 | -131652.330 | -69128.701 | 153BL-57 |
| | TOTAL.. | 180 0 0 | | 31.602 | 31.569 | 1 | 1.426 | 1 | | | |

チクメイ ... ミヤコタチク トチクカクセイリシキヨウ

| NO. | NO. | ANGLE * | AZIMUTH | LENGTH | DX | DY | X | Y | NO. |
|----------|----------|---------|---------|--------|--------|----|-------------|------------|----------|
| | 153BL-73 | | | | | | -131683.900 | -69130.128 | 153BL-73 |
| 153BL-73 | 153BL-70 | | 2 35 15 | 14.988 | 14.973 | 0 | -131668.927 | -69129.451 | 153BL-70 |
| 153BL-70 | 153BL-71 | 180 0 0 | 2 35 15 | 2.387 | 2.385 | 0 | -131666.542 | -69129.343 | 153BL-71 |
| 153BL-71 | 153BL-57 | 180 0 0 | 2 35 15 | 14.227 | 14.212 | 0 | -131652.330 | -69128.701 | 153BL-57 |
| | TOTAL.. | 360 0 0 | | 31.602 | 31.570 | 0 | 1.427 | 0 | |
| | 153BL-55 | | | | | | -131678.138 | -69114.050 | 153BL-55 |
| 153BL-55 | 153BL-72 | | 3 5 14 | 10.755 | 10.739 | 0 | -131667.399 | -69113.471 | 153BL-72 |
| 153BL-72 | 153BL-56 | 180 0 0 | 3 5 14 | 14.198 | 14.177 | 0 | -131653.222 | -69112.706 | 153BL-56 |
| | TOTAL.. | 180 0 0 | | 24.953 | 24.916 | 0 | 1.344 | 0 | |