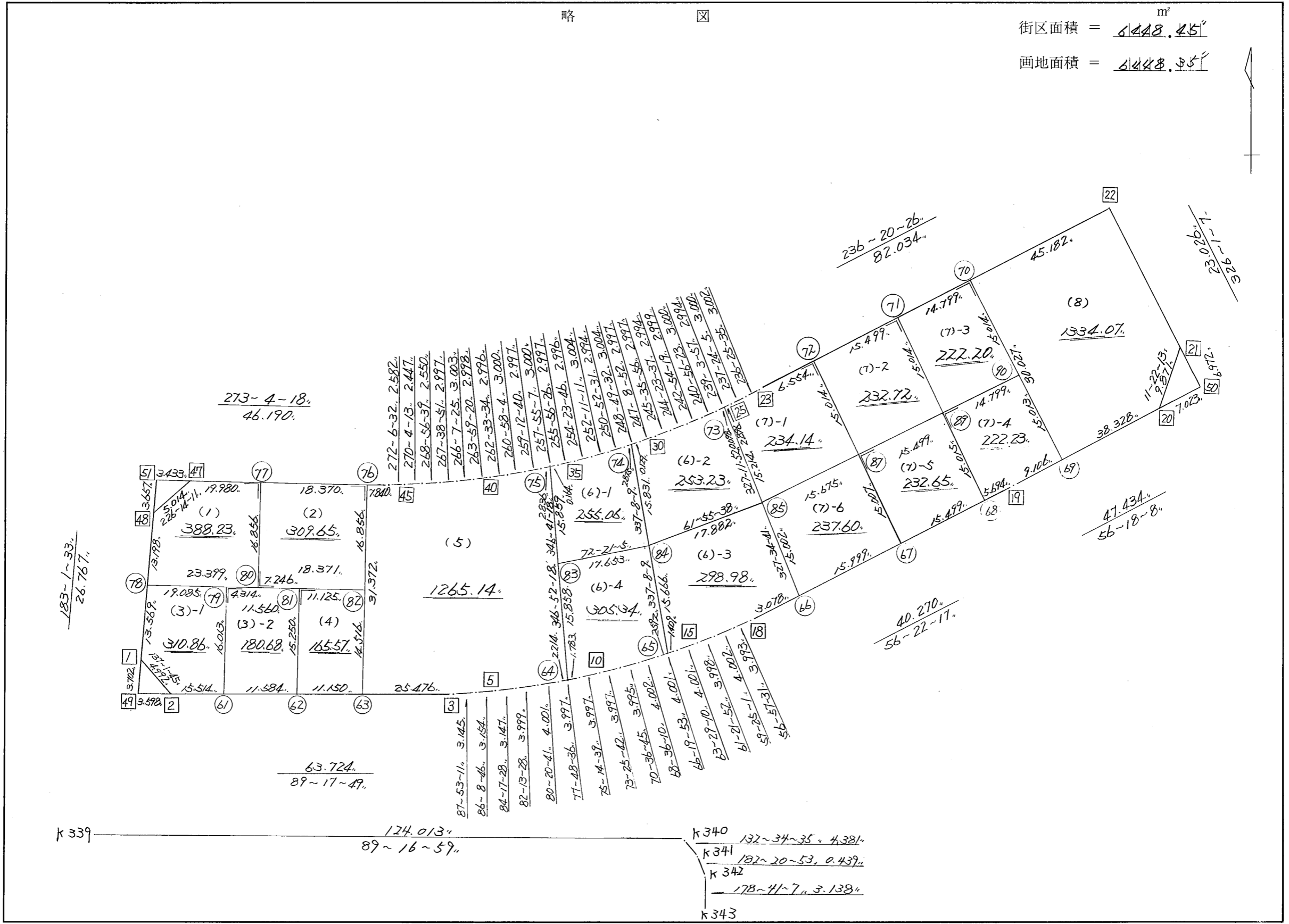


略 図

街区面積 = 6448.45 m^2
 画地面積 = 6448.95 m^2



183-1-33.
26.767.

273-4-18.
46.190.

63.724.
89-17-49.

124.013.
89-16-59.

K340 132-34-35, 4.381.
 K341 182-20-53, 0.439.
 K342 178-41-7, 3.138.
 K343

街区点番号 1 ~ 51, 筆界点番号 (61) ~ (90), 画地番号 (1) ~ (8).

*** メソセキ ケイサン (ハ"イオウキヨホウ) ***

チクメイ ... ミヤコタ"チク トチクカクセイリシ"キ"ヨウ

セリ NO... 154BL //

NO.	NO.	ANGLE	AZIMUTH	LENGTH	DX	*	DY	*	X	Y	DMD	2A	カ-フ"メソセキ
154BL-48	154BL- 1 //		183 1 33 //						-131720.546	-69210.143			
154BL- 1	154BL- 2 //	134 0 12	137 1 45 //	4.992 //	-3.653	0	3.403	0	-131724.199	-69206.740	1.990	-7.269470	
154BL- 2	154BL- 3 //	132 16 4	89 17 49 //	63.724 //	0.782	0	63.719	0	-131723.417	-69143.021	69.112	54.045584	
154BL- 3	154BL- 4 //	178 35 22	87 53 11 //	3.145 //	0.116	0	3.143	0	-131723.301	-69139.878	135.974	15.772984	
154BL- 4	154BL- 5 //	178 15 35	86 8 46 //	3.154 //	0.212	0	3.147	0	-131723.089	-69136.731	142.264	30.159968	
154BL- 5	154BL- 6 //	178 8 42	84 17 28 //	3.147 //	0.313	0	3.131	0	-131722.776	-69133.600	148.542	46.493646	
154BL- 6	154BL- 7 //	177 56 0	82 13 28 //	3.999 //	0.541	0	3.962	0	-131722.235	-69129.638	155.635	84.198535	
154BL- 7	154BL- 8 //	178 7 13	80 20 41 //	4.001 //	0.671	0	3.944	0	-131721.564	-69125.694	163.541	109.736011	
154BL- 8	154BL- 9 //	177 27 55	77 48 36 //	3.997 //	0.844	0	3.907	0	-131720.720	-69121.787	171.392	144.654848	
154BL- 9	154BL-10 //	177 26 3	75 14 39 //	3.997 //	1.018	0	3.865	0	-131719.702	-69117.922	179.164	182.388952	
154BL-10	154BL-11 //	178 11 3	73 25 42 //	3.997 //	1.140	0	3.831	0	-131718.562	-69114.091	186.860	213.020400	
154BL-11	154BL-12 //	177 11 3	70 36 45 //	3.995 //	1.326	0	3.768	0	-131717.236	-69110.323	194.459	257.852634	
154BL-12	154BL-13 //	177 59 25	68 36 10 //	4.002 //	1.460	0	3.726	0	-131715.776	-69106.597	201.953	294.851380	
154BL-13	154BL-14 //	177 43 43	66 19 53 //	4.001 //	1.606	0	3.664	0	-131714.170	-69102.933	209.343	336.204858	
154BL-14	154BL-15 //	177 9 17	63 29 10 //	4.001 //	1.786	0	3.580	0	-131712.384	-69099.353	216.587	386.824382	
154BL-15	154BL-16 //	177 52 42	61 21 52 //	3.998 //	1.916	0	3.509	0	-131710.468	-69095.844	223.676	428.563216	
154BL-16	154BL-17 //	178 3 9	59 25 1 //	4.002 //	2.036	0	3.445	0	-131708.432	-69092.399	230.630	469.562680	
154BL-17	154BL-18 //	177 32 30	56 57 31 //	3.993 //	2.177	0	3.347	0	-131706.255	-69089.052	237.422	516.867694	
154BL-18	154BL-19 //	179 24 46	56 22 17 //	40.270 //	22.302	0	33.531	0	-131683.953	-69055.521	274.300	6117.438600	
154BL-19	154BL-20 //	179 55 51	56 18 8 //	47.434 //	26.317	0	39.464	0	-131657.636	-69016.057	347.295	9139.762515	
154BL-20	154BL-21 //	135 4 5	11 22 13 //	9.871 //	9.677	0	1.946	0	-131647.959	-69014.111	388.705	3761.498285	
154BL-21	154BL-22 //	134 38 54	326 1 7 //	23.026 //	19.094	0	-12.870	0	-131628.865	-69026.981	377.781	7213.350414	
154BL-22	154BL-23 //	90 19 19	236 20 26 //	82.034 //	-45.468	0	-68.281	0	-131674.333	-69095.262	296.630	-13487.172840	
154BL-23	154BL-24 //	180 5 9	236 25 35 //	3.002 //	-1.660	0	-2.501	0	-131675.993	-69097.763	225.848	-374.907680	

*** メンセキ ケイサン (ハイオウキヨホウ) ***

チクメイ ... ミヤコタチク トチクカクセイリシキヨウ

セイリ NO... 154BL

NO.	NO.	ANGLE	AZIMUTH	LENGTH	DX	*	DY	*	X	Y	DMD	2A	カ-フ"メンセキ
154BL-24	154BL-25 ✓	180 58 30	237 24 5	3.000	-1.616	0	-2.527	0	-131677.609	-69100.290	220.820	-356.845120	
154BL-25	154BL-26 ✓	181 39 52	239 3 57	2.994	-1.539	0	-2.568	0	-131679.148	-69102.858	215.725	-332.000775	
154BL-26	154BL-27 ✓	181 52 26	240 56 23	3.000	-1.457	0	-2.622	0	-131680.605	-69105.480	210.535	-306.749495	
154BL-27	154BL-28 ✓	181 57 56	242 54 19	2.999	-1.366	0	-2.670	0	-131681.971	-69108.150	205.243	-280.361938	
154BL-28	154BL-29 ✓	181 29 18	244 23 37	2.994	-1.294	0	-2.700	0	-131683.265	-69110.850	199.873	-258.635662	
154BL-29	154BL-30 ✓	181 12 19	245 35 56	2.997	-1.238	0	-2.729	0	-131684.503	-69113.579	194.444	-240.721672	
154BL-30	154BL-31 ✓	181 32 56	247 8 52	2.997	-1.164	0	-2.762	0	-131685.667	-69116.341	188.953	-219.941292	
154BL-31	154BL-32 ✓	181 40 40	248 49 32	3.004	-1.085	0	-2.801	0	-131686.752	-69119.142	183.390	-198.978150	
154BL-32	154BL-33 ✓	182 2 59	250 52 31	2.994	-0.981	0	-2.829	0	-131687.733	-69121.971	177.760	-174.382560	
154BL-33	154BL-34 ✓	181 18 40	252 11 11	3.004	-0.919	0	-2.860	0	-131688.652	-69124.831	172.071	-158.133249	
154BL-34	154BL-35 ✓	182 12 35	254 23 46	2.996	-0.806	0	-2.886	0	-131689.458	-69127.717	166.325	-134.057950	
154BL-35	154BL-36 ✓	181 32 40	255 56 26	2.997	-0.728	0	-2.907	0	-131690.186	-69130.624	160.532	-116.867296	
154BL-36	154BL-37 ✓	181 58 41	257 55 7	3.000	-0.628	0	-2.934	0	-131690.814	-69133.558	154.691	-97.145948	
154BL-37	154BL-38 ✓	181 17 33	259 12 40	2.997	-0.561	0	-2.944	0	-131691.375	-69136.502	148.813	-83.484093	
154BL-38	154BL-39 ✓	181 45 24	260 58 4	3.000	-0.471	0	-2.963	0	-131691.846	-69139.465	142.906	-67.308726	
154BL-39	154BL-40 ✓	181 35 30	262 33 34	2.996	-0.388	0	-2.971	0	-131692.234	-69142.436	136.972	-53.145136	
154BL-40	154BL-41 ✓	181 25 46	263 59 20	2.998	-0.314	0	-2.982	0	-131692.548	-69145.418	131.019	-41.139966	
154BL-41	154BL-42 ✓	182 8 5	266 7 25	3.003	-0.203	0	-2.996	0	-131692.751	-69148.414	125.041	-25.383323	
154BL-42	154BL-43 ✓	181 31 26	267 38 51	2.997	-0.123	0	-2.994	0	-131692.874	-69151.408	119.051	-14.643273	
154BL-43	154BL-44 ✓	181 17 48	268 56 39	2.550	-0.047	0	-2.550	0	-131692.921	-69153.958	113.507	-5.334829	
154BL-44	154BL-45 ✓	181 7 34	270 4 13	2.447	0.003	0	-2.447	0	-131692.918	-69156.405	108.510	0.325530	
154BL-45	154BL-46 ✓	182 2 19	272 6 32	2.582	0.095	0	-2.580	0	-131692.823	-69158.985	103.483	9.830885	
154BL-46	154BL-47 ✓	180 57 46	273 4 18	46.190	2.475	0	-46.124	0	-131690.348	-69205.109	54.779	135.578025	
154BL-47	154BL-48 ✓	133 9 53	226 14 11	5.014	-3.468	0	-3.621	0	-131693.816	-69208.730	5.034	-17.457912	

*** メンセキ ケイサン (ハイオウキヨホウ) ***

チクメイ ... ミヤコタチク トチクカクセイリシキヨウ

セイリ NO... 154BL

NO.	NO.	ANGLE	AZIMUTH	LENGTH	DX	*	DY	*	X	Y	DMD	2A	カーブメンセキ
154BL-48	154BL- 1	136 47 22	183 1 33	26.767	-26.730	0	-1.413	0	-131720.546	-69210.143	0.000	0.000000	
TOTAL..	ソツカクスウ= 48	8280 0 0		474.299	0.000	0	0.000	0			ハイメンセキ=	12896.913671	
											1/2=	6448.45	+0.00
											メンセキ=	6448.45	

*** モンセキ ケイザン (ハ"イオウキヨホウ) ***

チクメイ ... ミヤコタ"チク トチクカクセイリシ"キ"ヨウ

セリ NO... 154BL(1)✓

NO.	NO.	ANGLE	AZIMUTH	LENGTH	DX	*	DY	*	X	Y	DMD	2A	カーブ"モンセキ
154BL-48	154BL-78✓		183 1 33						-131706.996	-69209.427			
154BL-78	154BL-80✓	90 2 45	93 4 18✓	23.399✓	-1.254	0	23.365	0	-131708.250	-69186.062	22.668	-28.425672	
154BL-80	154BL-77✓	90 0 0	3 4 18✓	16.856✓	16.832	-1	0.903	1	-131691.419	-69185.158	46.937	789.996647	
154BL-77	154BL-47✓	90 0 0	273 4 18✓	19.980✓	1.071	0	-19.951	0	-131690.348	-69205.109	27.890	29.870190	
154BL-47	154BL-48✓	133 9 53	226 14 11✓	5.014✓	-3.468	0	-3.621	0	-131693.816	-69208.730	4.318	-14.974824	
154BL-48	154BL-78✓	136 47 22	183 1 33✓	13.198✓	-13.180	0	-0.697	0	-131706.996	-69209.427	0.000	0.000000	
TOTAL..	ソツカクスク= 5	540 0 0		78.447	0.001	-1✓	-0.001	1✓			ハイモンセキ=	776.466341	
											1/2=	388.23	+0.00
											モンセキ=	388.23✓	

セリ NO... 154BL(2)✓

154BL-77	154BL-80✓		183 4 18						-131708.250	-69186.062			
154BL-80	154BL-82✓	90 0 0	93 4 18✓	18.371✓	-0.984	-1	18.345	0	-131709.235	-69167.717	17.441	-17.179385	
154BL-82	154BL-76✓	90 0 0	3 4 18✓	16.856✓	16.832	0	0.903	0	-131692.403	-69166.814	36.689	617.549248	
154BL-76	154BL-77✓	90 0 0	273 4 18✓	18.370✓	0.984	0	-18.344	0	-131691.419	-69185.158	19.248	18.940032	
154BL-77	154BL-80✓	90 0 0	183 4 18✓	16.856✓	-16.832	1	-0.903	-1	-131708.250	-69186.062	0.000	0.000000	
TOTAL..	ソツカクスク= 4	360 0 0		70.453	0.000	0✓	0.001	-1✓			ハイモンセキ=	619.309895	
											1/2=	309.65	+0.00
											モンセキ=	309.65✓	

*** メンセキ ケイサン (ハ"イオウキヨホウ) ***

チクメイ ... ミヤコタ"チク トチクカクセイリシ"キ"ヨウ

セリ NO... 154BL(3)-1/

NO.	NO.	ANGLE	AZIMUTH	LENGTH	DX	*	DY	*	X	Y	DMD	2A	カーブ"メンセキ
154BL-78	154BL- 1/		183 1 33						-131720.546	-69210.143			
154BL- 1	154BL- 2/	134 0 12	137 1 45/	4.992/	-3.653	0	3.403	0	-131724.199	-69206.740	2.687	-9.815611	
154BL- 2	154BL-61/	132 16 4	89 17 49/	15.514/	0.190	0	15.513	0	-131724.009	-69191.227	21.603	4.104570	
154BL-61	154BL-79/	93 46 29	3 4 18/	16.013/	15.990	0	0.858	0	-131708.019	-69190.369	37.974	607.204260	
154BL-79	154BL-78/	90 0 0	273 4 18/	19.085/	1.023	0	-19.058	0	-131706.996	-69209.427	19.774	20.228802	
154BL-78	154BL- 1/	89 57 15	183 1 33/	13.569/	-13.550	0	-0.716	0	-131720.546	-69210.143	0.000	0.000000	
TOTAL..	ソツカク入ウ= 5	540 0 0		69.173	0.000	0/	0.000	0/			ハ"イメンセキ=	621.722021	
											1/2=	310.86	+0.00
											メンセキ=	310.86/	

セリ NO... 154BL(3)-2/

154BL-79	154BL-61/		183 4 18						-131724.009	-69191.227			
154BL-61	154BL-62/	86 13 31	89 17 49/	11.584/	0.142	0	11.583	0	-131723.867	-69179.644	10.725	1.522950	
154BL-62	154BL-81/	93 46 29	3 4 18/	15.250/	15.228	0	0.817	1	-131708.639	-69178.826	23.126	352.162728	
154BL-81	154BL-79/	90 0 0	273 4 18/	11.560/	0.619	1	-11.543	0	-131708.019	-69190.369	12.401	7.688620	
154BL-79	154BL-61/	90 0 0	183 4 18/	16.013/	-15.990	0	-0.858	0	-131724.009	-69191.227	0.000	0.000000	
TOTAL..	ソツカク入ウ= 4	360 0 0		54.407	-0.001	1/	-0.001	1/			ハ"イメンセキ=	361.374298	
											1/2=	180.68	+0.00
											メンセキ=	180.68/	

*** メンセキ ケイサン (ハ"イオウキヨホウ) ***

チクメイ ... ミヤコタ"チク トチクカクセイリヨ"キ"ヨウ

セリ NO... 154BL⁽⁴⁾~~(5)~~ ✓

NO.	NO.	ANGLE	AZIMUTH	LENGTH	DX	*	DY	*	X	Y	DMD	2A	カ-フ"メンセキ
154BL-81	154BL-62 ✓		183 4 18						-131723.867	-69179.644			
154BL-62	154BL-63 ✓	86 13 31	89 17 49 ✓	11.150 ✓	0.137	0	11.149	0	-131723.730	-69168.495	10.331	1.415347	
154BL-63	154BL-82 ✓	93 46 29	3 4 18 ✓	14.516 ✓	14.495	0	0.778	0	-131709.235	-69167.717	22.258	322.629710	
154BL-82	154BL-81 ✓	90 0 0	273 4 18 ✓	11.125 ✓	0.596	0	-11.109	0	-131708.639	-69178.826	11.927	7.108492	
154BL-81	154BL-62 ✓	90 0 0	183 4 18 ✓	15.250 ✓	-15.228	0	-0.817	-1	-131723.867	-69179.644	0.000	0.000000	
TOTAL..	ソツカクスウ= 4	360 0 0		52.041	0.000	0 ✓	0.001	-1 ✓			ハ"イメンセキ=	331.153549	
											1/2=	165.57	+0.00
											メンセキ=	165.57 ✓	

*** メンセキ ケイサン (ハイイウキヨホウ) ***

チクメイ ... ミヤコタチク トチクカクセイリシキヨウ

セイリ NO... 154BL ~~(6)~~ ⁽⁵⁾ ✓

NO.	NO.	ANGLE	AZIMUTH	LENGTH	DX	*	DY	*	X	Y	DMD	2A	カーブメンセキ
154BL-76	154BL-63 ✓		183 4 18						-131723.730	-69168.495			
154BL-63	154BL-3 ✓	86 13 31	89 17 49 ✓	25.476 ✓	0.313	0	25.474	0	-131723.417	-69143.021	23.793	7.447209	
154BL-3	154BL-4 ✓	178 35 22	87 53 11 ✓	3.145 ✓	0.116	0	3.143	0	-131723.301	-69139.878	52.410	6.079560	
154BL-4	154BL-5 ✓	178 15 35	86 8 46 ✓	3.154 ✓	0.212	0	3.147	0	-131723.089	-69136.731	58.700	12.444400	
154BL-5	154BL-6 ✓	178 8 42	84 17 28 ✓	3.147 ✓	0.313	0	3.131	0	-131722.776	-69133.600	64.978	20.338114	
154BL-6	154BL-7 ✓	177 56 0	82 13 28 ✓	3.999 ✓	0.541	0	3.962	0	-131722.235	-69129.638	72.071	38.990411	
154BL-7	154BL-8 ✓	178 7 13	80 20 41 ✓	4.001 ✓	0.671	0	3.944	0	-131721.564	-69125.694	79.977	53.664567	
154BL-8	154BL-64 ✓	177 27 55	77 48 36 ✓	2.214 ✓	0.467	0	2.164	0	-131721.097	-69123.530	86.085	40.201695	
154BL-64	154BL-83 ✓	89 3 42	346 52 18 ✓	15.858 ✓	15.444	0	-3.602	0	-131705.653	-69127.132	84.647	1307.288268	
154BL-83	154BL-75 ✓	179 49 0	346 41 18 ✓	15.859 ✓	15.433	0	-3.652	0	-131690.220	-69130.784	77.393	1194.406169	
154BL-75	154BL-37 ✓	91 13 49	257 55 7 ✓	2.836 ✓	-0.594	0	-2.773	-1	-131690.814	-69133.558	70.967	-42.154398	
154BL-37	154BL-38 ✓	181 17 33	259 12 40 ✓	2.997 ✓	-0.561	0	-2.944	0	-131691.375	-69136.502	65.249	-36.604689	
154BL-38	154BL-39 ✓	181 45 24	260 58 4 ✓	3.000 ✓	-0.471	0	-2.963	0	-131691.846	-69139.465	59.342	-27.950082	
154BL-39	154BL-40 ✓	181 35 30	262 33 34 ✓	2.996 ✓	-0.388	0	-2.971	0	-131692.234	-69142.436	53.408	-20.722304	
154BL-40	154BL-41 ✓	181 25 46	263 59 20 ✓	2.998 ✓	-0.314	0	-2.982	0	-131692.548	-69145.418	47.455	-14.900870	
154BL-41	154BL-42 ✓	182 8 5	266 7 25 ✓	3.003 ✓	-0.203	0	-2.996	0	-131692.751	-69148.414	41.477	-8.419831	
154BL-42	154BL-43 ✓	181 31 26	267 38 51 ✓	2.997 ✓	-0.123	0	-2.994	0	-131692.874	-69151.408	35.487	-4.364901	
154BL-43	154BL-44 ✓	181 17 48	268 56 39 ✓	2.550 ✓	-0.047	0	-2.550	0	-131692.921	-69153.958	29.943	-1.407321	
154BL-44	154BL-45 ✓	181 7 34	270 4 13 ✓	2.447 ✓	0.003	0	-2.447	0	-131692.918	-69156.405	24.946	0.074838	
154BL-45	154BL-46 ✓	182 2 19	272 6 32 ✓	2.582 ✓	0.095	0	-2.580	0	-131692.823	-69158.985	19.919	1.892305	
154BL-46	154BL-76 ✓	180 57 46	273 4 18 ✓	7.840 ✓	0.420	0	-7.829	0	-131692.403	-69166.814	9.510	3.994200	
154BL-76	154BL-63 ✓	90 0 0	183 4 18 ✓	31.372 ✓	-31.327	0	-1.681	0	-131723.730	-69168.495	0.000	0.000000	
TOTAL..	ソツカクスウ=	21 3420	0 0	144.471	0.000	0 ✓	0.001	-1 ✓			ハイイウキヨホウ=	2530.297340	
											1/2=	1265.14	+0.00
											メンセキ=	1265.14 ✓	

*** メンセキ ケイサン (ハイオウキヨホウ) ***

チクメイ ... ミヤコタチク トチクカクセイリシキヨウ

レイリ NO... 154BL(6)-1 ✓

NO.	NO.	ANGLE	AZIMUTH	LENGTH	DX	*	DY	*	X	Y	DMD	2A	カーブメンセキ
154BL-75	154BL-83 ✓		166 41 18						-131705.653	-69127.132			
154BL-83	154BL-84 ✓	85 39 47	72 21 5 ✓	17.653 ✓	5.352	0	16.822	0	-131700.301	-69110.310	20.474	109.576848	
154BL-84	154BL-74 ✓	84 47 4	337 8 9 ✓	15.831 ✓	14.587	0	-6.151	0	-131685.714	-69116.461	31.145	454.312115	
154BL-74	154BL-32 ✓	91 41 23	248 49 32 ✓	2.875 ✓	-1.038	0	-2.681	0	-131686.752	-69119.142	22.313	-23.160894	
154BL-32	154BL-33 ✓	182 2 59	250 52 31 ✓	2.994 ✓	-0.981	0	-2.829	0	-131687.733	-69121.971	16.803	-16.483743	
154BL-33	154BL-34 ✓	181 18 40	252 11 11 ✓	3.004 ✓	-0.919	0	-2.860	0	-131688.652	-69124.831	11.114	-10.213766	
154BL-34	154BL-35 ✓	182 12 35	254 23 46 ✓	2.996 ✓	-0.806	0	-2.886	0	-131689.458	-69127.717	5.368	-4.326608	
154BL-35	154BL-36 ✓	181 32 40	255 56 26 ✓	2.997 ✓	-0.728	0	-2.907	0	-131690.186	-69130.624	-0.425	0.309400	
154BL-36	154BL-75 ✓	181 58 41	257 55 7 ✓	0.164 ✓	-0.034	0	-0.160	0	-131690.220	-69130.784	-3.492	0.118728	
154BL-75	154BL-83 ✓	88 46 11	166 41 18 ✓	15.859 ✓	-15.433	0	3.652	0	-131705.653	-69127.132	0.000	0.000000	
TOTAL..	ツツカクスウ= 9	1260	0 0	64.373	0.000	0 ✓	0.000	0 ✓			ハイメンセキ=	510.132080	
											1/2=	255.06	+0.00
											メンセキ=	255.06 ✓	

*** メンセキ ケイサン (ハイオウキヨホウ) ***

チクメイ ... ミヤコタチク トチクカクセリシキヨウ

セリ NO... 154BL(6)-2 ✓

NO.	NO.	ANGLE	AZIMUTH	LENGTH	DX	*	DY	*	X	Y	DMD	2A	カ-フメンセキ
154BL-74	154BL-84 ✓		157 8 9						-131700.301	-69110.310			
154BL-84	154BL-85 ✓	84 47 29	61 55 38 ✓	17.882 ✓	8.415	0	15.778	0	-131691.886	-69094.532	21.929	184.532535	
154BL-85	154BL-73 ✓	85 16 14	327 11 52 ✓	15.214 ✓	12.788	0	-8.242	0	-131679.098	-69102.774	29.465	376.798420	
154BL-73	154BL-26 ✓	91 52 5	239 3 57 ✓	0.098 ✓	-0.050	0	-0.084	0	-131679.148	-69102.858	21.139	-1.056950	
154BL-26	154BL-27 ✓	181 52 26	240 56 23 ✓	3.000 ✓	-1.457	0	-2.622	0	-131680.605	-69105.480	18.433	-26.856881	
154BL-27	154BL-28 ✓	181 57 56	242 54 19 ✓	2.999 ✓	-1.366	0	-2.670	0	-131681.971	-69108.150	13.141	-17.950606	
154BL-28	154BL-29 ✓	181 29 18	244 23 37 ✓	2.994 ✓	-1.294	0	-2.700	0	-131683.265	-69110.850	7.771	-10.055674	
154BL-29	154BL-30 ✓	181 12 19	245 35 56 ✓	2.997 ✓	-1.238	0	-2.729	0	-131684.503	-69113.579	2.342	-2.899396	
154BL-30	154BL-31 ✓	181 32 56	247 8 52 ✓	2.997 ✓	-1.164	0	-2.762	0	-131685.667	-69116.341	-3.149	3.665436	
154BL-31	154BL-74 ✓	181 40 40	248 49 32 ✓	0.129 ✓	-0.047	0	-0.120	0	-131685.714	-69116.461	-6.031	0.283457	
154BL-74	154BL-84 ✓	88 18 37	157 8 9 ✓	15.831 ✓	-14.587	0	6.151	0	-131700.301	-69110.310	0.000	0.000000	
TOTAL..	ソツカクスウ= 10	1440	0 0	64.141	0.000	0 ✓	0.000	0 ✓			ハイメンセキ=	506.460341	
											1/2=	253.23	+0.00
											メンセキ=	253.23 ✓	

*** メンセキ ケイサン (ハイオウキヨホウ) ***

チクメイ ... ミヤコタチク トチクカクセイリシキヨウ

ペリ NO... 154BL(6)-3

NO.	NO.	ANGLE	AZIMUTH	LENGTH	DX	*	DY	*	X	Y	DMD	2A	カ-フメンセキ
154BL-84	154BL-65		157 8 9						-131714.736	-69104.223			
154BL-65	154BL-14	89 11 44	66 19 53	1.409	0.566	0	1.290	0	-131714.170	-69102.933	7.377	4.175382	
154BL-14	154BL-15	177 9 17	63 29 10	4.001	1.786	0	3.580	0	-131712.384	-69099.353	12.247	21.873142	
154BL-15	154BL-16	177 52 42	61 21 52	3.998	1.916	0	3.509	0	-131710.468	-69095.844	19.336	37.047776	
154BL-16	154BL-17	178 3 9	59 25 1	4.002	2.036	0	3.445	0	-131708.432	-69092.399	26.290	53.526440	
154BL-17	154BL-18	177 32 30	56 57 31	3.993	2.177	0	3.347	0	-131706.255	-69089.052	33.082	72.019514	
154BL-18	154BL-66	179 24 46	56 22 17	3.078	1.705	0	2.563	0	-131704.550	-69086.489	38.992	66.481360	
154BL-66	154BL-85	91 12 24	327 34 41	15.002	12.664	0	-8.043	0	-131691.886	-69094.532	33.512	424.395968	
154BL-85	154BL-84	94 20 57	241 55 38	17.882	-8.415	0	-15.778	0	-131700.301	-69110.310	9.691	-81.549765	
154BL-84	154BL-65	95 12 31	157 8 9	15.666	-14.435	0	6.087	0	-131714.736	-69104.223	0.000	0.000000	
TOTAL..	ソツカクスク= 9	1260	0 0	69.031	0.000	0	0.000	0			ハイメンセキ=	597.969817	
											1/2=	298.98	+0.00
											メンセキ=	298.98	

*** メンセキ ケイサン (ハイオウキヨホウ) ***

チクメイ ... ミヤコタチク トチクカクセイリシキヨウ

レイ NO... 154BL(6)-4 ✓

NO.	NO.	ANGLE	AZIMUTH	LENGTH	DX	*	DY	*	X	Y	DMD	2A	カーブメンセキ
154BL-83	154BL-64 ✓		166 52 18						-131721.097	-69123.530			
154BL-64	154BL-9 ✓	90 56 18	77 48 36 ✓	1.783 ✓	0.376	1	1.743	0	-131720.720	-69121.787	5.345	2.015065	
154BL-9	154BL-10 ✓	177 26 3	75 14 39 ✓	3.997 ✓	1.018	0	3.865	0	-131719.702	-69117.922	10.953	11.150154	
154BL-10	154BL-11 ✓	178 11 3	73 25 42 ✓	3.997 ✓	1.140	0	3.831	0	-131718.562	-69114.091	18.649	21.259860	
154BL-11	154BL-12 ✓	177 11 3	70 36 45 ✓	3.995 ✓	1.326	0	3.768	0	-131717.236	-69110.323	26.248	34.804848	
154BL-12	154BL-13 ✓	177 59 25	68 36 10 ✓	4.002 ✓	1.460	0	3.726	0	-131715.776	-69106.597	33.742	49.263320	
154BL-13	154BL-65 ✓	177 43 43	66 19 53 ✓	2.592 ✓	1.041	-1	2.374	0	-131714.736	-69104.223	39.842	41.435680	
154BL-65	154BL-84 ✓	90 48 16 337 8 9		15.666 ✓	14.435	0	-6.087	0	-131700.301	-69110.310	36.129	521.522115	
154BL-84	154BL-83 ✓	95 12 56 252 21 5		17.653 ✓	-5.352	0	-16.822	0	-131705.653	-69127.132	13.220	-70.753440	
154BL-83	154BL-64 ✓	94 31 13 166 52 18		15.858 ✓	-15.444	0	3.602	0	-131721.097	-69123.530	0.000	0.000000	
TOTAL..	ソツカクスウ= 9	1260	0 0	69.543	0.000	0	0.000	0			ハイメンセキ=	610.697602	
											1/2=	305.34	+0.00
											メンセキ=	305.34 ✓	

レイ NO... 154BL(7)-1 ✓

154BL-73	154BL-85 ✓		147 11 52						-131691.886	-69094.532			
154BL-85	154BL-87 ✓	89 8 34	56 20 26 ✓	15.675 ✓	8.688	0	13.047	0	-131683.198	-69081.485	21.289	184.958832	
154BL-87	154BL-72 ✓	90 0 0 326 20 26		15.014 ✓	12.497	0	-8.322	0	-131670.701	-69089.807	26.014	325.096958	
154BL-72	154BL-23 ✓	90 0 0 236 20 26		6.554 ✓	-3.633	1	-5.455	0	-131674.333	-69095.262	12.237	-44.444784	
154BL-23	154BL-24 ✓	180 5 9 236 25 35		3.002 ✓	-1.660	0	-2.501	0	-131675.993	-69097.763	4.281	-7.106460	
154BL-24	154BL-25 ✓	180 58 30 237 24 5		3.000 ✓	-1.616	0	-2.527	0	-131677.609	-69100.290	-0.747	1.207152	
154BL-25	154BL-73 ✓	181 39 52 239 3 57		2.896 ✓	-1.489	0	-2.484	0	-131679.098	-69102.774	-5.758	8.573662	
154BL-73	154BL-85 ✓	88 7 55 147 11 52		15.214 ✓	-12.788	0	8.242	0	-131691.886	-69094.532	0.000	0.000000	
TOTAL..	ソツカクスウ= 7	900	0 0	61.355	-0.001	1	0.000	0			ハイメンセキ=	468.285360	
											1/2=	234.14	+0.00
											メンセキ=	234.14 ✓	

*** メンセキ ケイサン (ハイオウキヨホウ) ***

チクメイ ... ミヤコタチク トチクカクセイリシキヨウ

ペリ NO... 154BL(7)-2 ✓

NO.	NO.	ANGLE	AZIMUTH	LENGTH	DX	*	DY	*	X	Y	DMD	2A	カ-フメンセキ
154BL-72	154BL-87 ✓		146 20 26						-131683.198	-69081.485			
154BL-87	154BL-89 ✓	90 0 0	56 20 26 ✓	15.499 ✓	8.590	0	12.901	0	-131674.608	-69068.584	21.223	182.305570	
154BL-89	154BL-71 ✓	90 0 0	326 20 26 ✓	15.014 ✓	12.497	1	-8.322	0	-131662.110	-69076.906	25.802	322.473396	
154BL-71	154BL-72 ✓	90 0 0	236 20 26 ✓	15.499 ✓	-8.590	-1	-12.901	0	-131670.701	-69089.807	4.579	-39.338189	
154BL-72	154BL-87 ✓	90 0 0	146 20 26 ✓	15.014 ✓	-12.497	0	8.322	0	-131683.198	-69081.485	0.000	0.000000	
TOTAL..	ソツカクスウ= 4	360 0 0		61.026	0.000	0 ✓	0.000	0 ✓			ハイメンセキ=	465.440777	
											1/2=	232.72	+0.00
											メンセキ=	232.72 ✓	

ペリ NO... 154BL(7)-3 ✓

154BL-71	154BL-89 ✓		146 20 26						-131674.608	-69068.584			
154BL-89	154BL-90 ✓	90 0 0	56 20 26 ✓	14.799 ✓	8.202	1	12.318	0	-131666.405	-69056.266	20.640	169.309920	
154BL-90	154BL-70 ✓	90 0 0	326 20 26 ✓	15.014 ✓	12.497	0	-8.322	0	-131653.908	-69064.588	24.636	307.876092	
154BL-70	154BL-71 ✓	90 0 0	236 20 26 ✓	14.799 ✓	-8.202	0	-12.318	0	-131662.110	-69076.906	3.996	-32.775192	
154BL-71	154BL-89 ✓	90 0 0	146 20 26 ✓	15.014 ✓	-12.497	-1	8.322	0	-131674.608	-69068.584	0.000	0.000000	
TOTAL..	ソツカクスウ= 4	360 0 0		59.626	0.000	0 ✓	0.000	0 ✓			ハイメンセキ=	444.410820	
											1/2=	222.20	+0.00
											メンセキ=	222.20 ✓	

*** メンセキ ケイサン (ハイオウキヨホウ) ***

チクメイ ... ミヤコタチク トチクカクセイリシキヨウ

セリ NO... 154BL(7)-4 ✓

NO.	NO.	ANGLE	AZIMUTH	LENGTH	DX	*	DY	*	X	Y	DMD	2A	カ-フメンセキ
154BL-89	154BL-68 ✓		146 20 26						-131687.106	-69060.262			
154BL-68	154BL-19 ✓	90 1 51	56 22 17 ✓	5.694 ✓	3.153	0	4.741	0	-131683.953	-69055.521	13.063	41.187639	
154BL-19	154BL-69 ✓	179 55 51	56 18 8 ✓	9.106 ✓	5.052	0	7.576	0	-131678.901	-69047.945	25.380	128.219760	
154BL-69	154BL-90 ✓	90 2 18	326 20 26 ✓	15.013 ✓	12.496	0	-8.321	0	-131666.405	-69056.266	24.635	307.838960	
154BL-90	154BL-89 ✓	90 0 0	236 20 26 ✓	14.799 ✓	-8.202	-1	-12.318	0	-131674.608	-69068.584	3.996	-32.779188	
154BL-89	154BL-68 ✓	90 0 0	146 20 26 ✓	15.015 ✓	-12.498	0	8.322	0	-131687.106	-69060.262	0.000	0.000000	
TOTAL..	ソツカクスク= 5	540 0 0		59.627	0.001	-1 ✓	0.000	0 ✓			ハイメンセキ=	444.467171	
											1/2=	222.23	+0.00
											メンセキ=	222.23 ✓	

セリ NO... 154BL(7)-5 ✓

154BL-87	154BL-67 ✓		146 20 26						-131695.689	-69073.167			
154BL-67	154BL-68 ✓	90 1 51	56 22 17 ✓	15.499 ✓	8.583	0	12.905	0	-131687.106	-69060.262	21.223	182.157009	
154BL-68	154BL-89 ✓	89 58 9	326 20 26 ✓	15.015 ✓	12.498	0	-8.322	0	-131674.608	-69068.584	25.806	322.523388	
154BL-89	154BL-87 ✓	90 0 0	236 20 26 ✓	15.499 ✓	-8.590	0	-12.901	0	-131683.198	-69081.485	4.583	-39.367970	
154BL-87	154BL-67 ✓	90 0 0	146 20 26 ✓	15.007 ✓	-12.491	0	8.318	0	-131695.689	-69073.167	0.000	0.000000	
TOTAL..	ソツカクスク= 4	360 0 0		61.020	0.000	0 ✓	0.000	0 ✓			ハイメンセキ=	465.312427	
											1/2=	232.65	+0.00
											メンセキ=	232.65 ✓	

*** ムンセキ ケイサン (ハ"イオウキヨホウ) ***

チクメイ ... ミヤコタ"チク トチクカクセイリシ"キ"ヨウ

セリ NO... 154BL(7)-6 ✓

NO.	NO.	ANGLE	AZIMUTH	LENGTH	DX	*	DY	*	X	Y	DMD	2A	カ-フ"ムンセキ
154BL-85	154BL-66 ✓		147 34 41						-131704.550	-69086.489			
154BL-66	154BL-67 ✓	88 47 36	56 22 17 ✓	15.999 ✓	8.860	1	13.321	1	-131695.689	-69073.167	21.365	189.315265	
154BL-67	154BL-87 ✓	89 58 9	326 20 26 ✓	15.007 ✓	12.491	0	-8.318	0	-131683.198	-69081.485	26.369	329.375179	
154BL-87	154BL-85 ✓	90 0 0	236 20 26 ✓	15.675 ✓	-8.688	0	-13.047	0	-131691.886	-69094.532	5.004	-43.474752	
154BL-85	154BL-66 ✓	91 14 15	147 34 41 ✓	15.002 ✓	-12.664	0	8.043	0	-131704.550	-69086.489	0.000	0.000000	
TOTAL..	ソツカクスウ= 4	360 0 0		61.683	-0.001	1 ✓	-0.001	1 ✓			ハ"イムンセキ=	475.215692	
											1/2=	237.60	+0.00
											ムンセキ=	237.60 ✓	

セリ NO... 154BL(8) ✓

154BL-70	154BL-69 ✓		146 20 26						-131678.901	-69047.945			
154BL-69	154BL-20 ✓	89 57 42	56 18 8 ✓	38.328 ✓	21.265	0	31.888	0	-131657.636	-69016.057	48.531	1032.011715	
154BL-20	154BL-21 ✓	135 4 5	11 22 13 ✓	9.871 ✓	9.677	0	1.946	0	-131647.959	-69014.111	82.365	797.046105	
154BL-21	154BL-22 ✓	134 38 54	326 1 7 ✓	23.026 ✓	19.094	0	-12.870	0	-131628.865	-69026.981	71.441	1364.094454	
154BL-22	154BL-70 ✓	90 19 19	236 20 26 ✓	45.182 ✓	-25.042	-1	-37.607	0	-131653.908	-69064.588	20.964	-525.001452	
154BL-70	154BL-69 ✓	90 0 0	146 20 26 ✓	30.027 ✓	-24.993	0	16.643	0	-131678.901	-69047.945	0.000	0.000000	
TOTAL..	ソツカクスウ= 5	540 0 0		146.434	0.001	-1 ✓	0.000	0 ✓			ハ"イムンセキ=	2668.150822	
											1/2=	1334.07	+0.00
											ムンセキ=	1334.07 ✓	

*** ケツコウ トラハース ***

チクメイ ... ミヤコタチク トチクカクセイリヨキヨウ

NO.	NO.	ANGLE	*	AZIMUTH	LENGTH	DX	*	DY	*	X	Y	NO.
	154BL- 2 ✓									-131724.199	-69206.740	154BL- 2
154BL- 2	154BL-61 ✓			89 17 49 ✓	15.514 ✓	0.190	0	15.513	0	-131724.009	-69191.227	154BL-61
154BL-61	154BL-62 ✓	180 0 0		89 17 49 ✓	11.584 ✓	0.142	0	11.583	0	-131723.867	-69179.644	154BL-62
154BL-62	154BL-63 ✓	180 0 0		89 17 49 ✓	11.150 ✓	0.137	0	11.149	0	-131723.730	-69168.495	154BL-63
154BL-63	154BL- 3 ✓	180 0 0		89 17 49 ✓	25.476 ✓	0.313	0	25.474	0	-131723.417	-69143.021	154BL- 3
	TOTAL..	540 0 0			63.724 ✓	0.782	0 ✓	63.719	0 ✓			
	154BL- 8 ✓									-131721.564	-69125.694	154BL- 8
154BL- 8	154BL-64 ✓			77 48 36 ✓	2.214 ✓	0.467	0	2.164	0	-131721.097	-69123.530	154BL-64
154BL-64	154BL- 9 ✓	180 0 0		77 48 36 ✓	1.783 ✓	0.376	1	1.743	0	-131720.720	-69121.787	154BL- 9
	TOTAL..	180 0 0			3.997 ✓	0.843	1 ✓	3.907	0 ✓			
	154BL-13 ✓									-131715.776	-69106.597	154BL-13
154BL-13	154BL-65 ✓			66 19 53 ✓	2.592 ✓	1.041	-1	2.374	0	-131714.736	-69104.223	154BL-65
154BL-65	154BL-14 ✓	180 0 0		66 19 53 ✓	1.409 ✓	0.566	0	1.290	0	-131714.170	-69102.933	154BL-14
	TOTAL..	180 0 0			4.001 ✓	1.607	-1 ✓	3.664	0 ✓			
	154BL-18 ✓									-131706.255	-69089.052	154BL-18
154BL-18	154BL-66 ✓			56 22 17 ✓	3.078 ✓	1.705	0	2.563	0	-131704.550	-69086.489	154BL-66
154BL-66	154BL-67 ✓	180 0 0		56 22 17 ✓	15.999 ✓	8.860	1	13.321	1	-131695.689	-69073.167	154BL-67
154BL-67	154BL-68 ✓	180 0 0		56 22 17 ✓	15.499 ✓	8.583	0	12.905	0	-131687.106	-69060.262	154BL-68
154BL-68	154BL-19 ✓	180 0 0		56 22 17 ✓	5.694 ✓	3.153	0	4.741	0	-131683.953	-69055.521	154BL-19
	TOTAL..	540 0 0			40.270 ✓	22.301	1 ✓	33.530	1 ✓			

*** ケツコウ トラハ"-入 ***

チクメイ ... ミヤコタチク トチクカクセイリシキ"ヨウ

NO.	NO.	ANGLE	*	AZIMUTH	LENGTH	DX	*	DY	*	X	Y	NO.
	154BL-19 ✓									-131683.953	-69055.521	154BL-19
154BL-19	154BL-69 ✓			56 18 8 ✓	9.106 ✓	5.052	0	7.576	0	-131678.901	-69047.945	154BL-69
154BL-69	154BL-20 ✓	180 0 0		56 18 8 ✓	38.328 ✓	21.265	0	31.888	0	-131657.636	-69016.057	154BL-20
	TOTAL..	180 0 0			47.434 ✓	26.317	0 ✓	39.464	0 ✓			
	154BL-22 ✓									-131628.865	-69026.981	154BL-22
154BL-22	154BL-70 ✓			236 20 26 ✓	45.182 ✓	-25.042	-1	-37.607	0	-131653.908	-69064.588	154BL-70
154BL-70	154BL-71 ✓	180 0 0		236 20 26 ✓	14.799 ✓	-8.202	0	-12.318	0	-131662.110	-69076.906	154BL-71
154BL-71	154BL-72 ✓	180 0 0		236 20 26 ✓	15.499 ✓	-8.590	-1	-12.901	0	-131670.701	-69089.807	154BL-72
154BL-72	154BL-23 ✓	180 0 0		236 20 26 ✓	6.554 ✓	-3.633	1	-5.455	0	-131674.333	-69095.262	154BL-23
	TOTAL..	540 0 0			82.034 ✓	-45.467	-1 ✓	-68.281	0 ✓			
	154BL-25 ✓									-131677.609	-69100.290	154BL-25
154BL-25	154BL-73 ✓			239 3 57 ✓	2.896 ✓	-1.489	0	-2.484	0	-131679.098	-69102.774	154BL-73
154BL-73	154BL-26 ✓	180 0 0		239 3 57 ✓	0.098 ✓	-0.050	0	-0.084	0	-131679.148	-69102.858	154BL-26
	TOTAL..	180 0 0			2.994 ✓	-1.539	0 ✓	-2.568	0 ✓			
	154BL-31 ✓									-131685.667	-69116.341	154BL-31
154BL-31	154BL-74 ✓			248 49 32 ✓	0.129 ✓	-0.047	0	-0.120	0	-131685.714	-69116.461	154BL-74
154BL-74	154BL-32 ✓	180 0 0		248 49 32 ✓	2.875 ✓	-1.038	0	-2.681	0	-131686.752	-69119.142	154BL-32
	TOTAL..	180 0 0			3.004 ✓	-1.085	0 ✓	-2.801	0 ✓			
	154BL-36 ✓									-131690.186	-69130.624	154BL-36
154BL-36	154BL-75 ✓			257 55 7 ✓	0.164 ✓	-0.034	0	-0.160	0	-131690.220	-69130.784	154BL-75

*** ケツコウ トラハス ***

チクメイ ... ミヤコタチク トチクカクセイリヨキヨウ

NO.	NO.	ANGLE	*	AZIMUTH	LENGTH	DX	*	DY	*	X	Y	NO.
154BL-75	154BL-37 ✓	180 0 0		257 55 7 ✓	2.836 ✓	-0.594	0	-2.773	-1	-131690.814	-69133.558	154BL-37
	TOTAL..	180 0 0			3.000 ✓	-0.628	0 ✓	-2.933	-1 ✓			
	154BL-46 ✓									-131692.823	-69158.985	154BL-46
154BL-46	154BL-76 ✓			273 4 18 ✓	7.840 ✓	0.420	0	-7.829	0	-131692.403	-69166.814	154BL-76
154BL-76	154BL-77 ✓	180 0 0		273 4 18 ✓	18.370 ✓	0.984	0	-18.344	0	-131691.419	-69185.158	154BL-77
154BL-77	154BL-47 ✓	180 0 0		273 4 18 ✓	19.980 ✓	1.071	0	-19.951	0	-131690.348	-69205.109	154BL-47
	TOTAL..	360 0 0			46.190 ✓	2.475	0 ✓	-46.124	0 ✓			
	154BL-48 ✓									-131693.816	-69208.730	154BL-48
154BL-48	154BL-78 ✓			183 1 33 ✓	13.198 ✓	-13.180	0	-0.697	0	-131706.996	-69209.427	154BL-78
154BL-78	154BL- 1 ✓	180 0 0		183 1 33 ✓	13.569 ✓	-13.550	0	-0.716	0	-131720.546	-69210.143	154BL- 1
	TOTAL..	180 0 0			26.767 ✓	-26.730	0 ✓	-1.413	0 ✓			
	154BL-78 ✓									-131706.996	-69209.427	154BL-78
154BL-78	154BL-80 ✓			93 4 18 ✓	23.399 ✓	-1.254	0	23.365	0	-131708.250	-69186.062	154BL-80
154BL-80	154BL-82 ✓	180 0 0		93 4 18 ✓	18.371 ✓	-0.984	-1	18.345	0	-131709.235	-69167.717	154BL-82
	TOTAL..	180 0 0			41.770 ✓	-2.238	-1 ✓	41.710	0 ✓			
	154BL-78 ✓									-131706.996	-69209.427	154BL-78
154BL-78	154BL-79 ✓			93 4 18 ✓	19.085 ✓	-1.023	0	19.058	0	-131708.019	-69190.369	154BL-79
154BL-79	154BL-81 ✓	180 0 0		93 4 18 ✓	11.560 ✓	-0.619	-1	11.543	0	-131708.639	-69178.826	154BL-81
154BL-81	154BL-82 ✓	180 0 0		93 4 18 ✓	11.125 ✓	-0.596	0	11.109	0	-131709.235	-69167.717	154BL-82
	TOTAL..	360 0 0			41.770 ✓	-2.238	-1 ✓	41.710	0 ✓			

*** ケツコウ トラハース ***

チクメイ ... ミヤコタチク トチクカクセイリシキヨウ

NO.	NO.	ANGLE	*	AZIMUTH	LENGTH	DX	*	DY	*	X	Y	NO.
	154BL-78 //									-131706.996	-69209.427	154BL-78
154BL-78	154BL-79 ✓			93 4 18 ✓	19.085 ✓	-1.023	0	19.058	0	-131708.019	-69190.369	154BL-79
154BL-79	154BL-80 ✓	180 0 0		93 4 18 ✓	4.314 ✓	-0.231	0	4.308	-1	-131708.250	-69186.062	154BL-80
154BL-80	154BL-81 ✓	180 0 0		93 4 18 ✓	7.246 ✓	-0.388	-1	7.236	0	-131708.639	-69178.826	154BL-81
154BL-81	154BL-82 ✓	180 0 0		93 4 18 ✓	11.125 ✓	-0.596	0	11.109	0	-131709.235	-69167.717	154BL-82
	TOTAL...	540 0 0			41.770 ✓	-2.238	-1 ✓	41.711	-1 ✓			
	154BL-63 //									-131723.730	-69168.495	154BL-63
154BL-63	154BL-82 ✓			3 4 18 ✓	14.516 ✓	14.495	0	0.778	0	-131709.235	-69167.717	154BL-82
154BL-82	154BL-76 ✓	180 0 0		3 4 18 ✓	16.856 ✓	16.832	0	0.903	0	-131692.403	-69166.814	154BL-76
	TOTAL...	180 0 0			31.372 ✓	31.327	0 ✓	1.681	0 ✓			
	154BL-65 //									-131714.736	-69104.223	154BL-65
154BL-65	154BL-84 ✓			337 8 9 ✓	15.666 ✓	14.435	0	-6.087	0	-131700.301	-69110.310	154BL-84
154BL-84	154BL-74 ✓	180 0 0		337 8 9 ✓	15.831 ✓	14.587	0	-6.151	0	-131685.714	-69116.461	154BL-74
	TOTAL...	180 0 0			31.497 ✓	29.022	0 ✓	-12.238	0 ✓			
	154BL-67 //									-131695.689	-69073.167	154BL-67
154BL-67	154BL-87 ✓			326 20 26 ✓	15.007 ✓	12.491	0	-8.318	0	-131683.198	-69081.485	154BL-87
154BL-87	154BL-72 ✓	180 0 0		326 20 26 ✓	15.014 ✓	12.497	0	-8.322	0	-131670.701	-69089.807	154BL-72
	TOTAL...	180 0 0			30.021 ✓	24.988	0 ✓	-16.640	0 ✓			
	154BL-68 //									-131687.106	-69060.262	154BL-68
154BL-68	154BL-89 ✓			326 20 26 ✓	15.015 ✓	12.498	0	-8.322	0	-131674.608	-69068.584	154BL-89

*** ケツコウ トラハス ***

チクメイ ... ミヤコタチク トチクカクセイリシキヨウ

NO.	NO.	ANGLE	*	AZIMUTH	LENGTH	DX	*	DY	*	X	Y	NO.
154BL-89	154BL-71 ✓	180 0 0		326 20 26 ✓	15.014 ✓	12.497	1	-8.322	0	-131662.110	-69076.906	154BL-71
	TOTAL..	180 0 0			30.029 ✓	24.995	1 ✓	-16.644	0 ✓			
	154BL-69 ✓									-131678.901	-69047.945	154BL-69
154BL-69	154BL-90 ✓			326 20 26 ✓	15.013 ✓	12.496	0	-8.321	0	-131666.405	-69056.266	154BL-90
154BL-90	154BL-70 ✓	180 0 0		326 20 26 ✓	15.014 ✓	12.497	0	-8.322	0	-131653.908	-69064.588	154BL-70
	TOTAL..	180 0 0			30.027 ✓	24.993	0 ✓	-16.643	0 ✓			

*** ケツコウ トラハス ***

チクメイ ... ミヤコタチク トチクカクセイリシキヨウ

INO.	NO.	ANGLE	* AZIMUTH	LENGTH	DX	* DY	* X	Y	NO.
	154BL-85,,						-131691.886	-69094.532	154BL-85
154BL-85	154BL-87,,		56 20 26,,	15.675,,	8.688	0 13.047	0 -131683.198	-69081.485	154BL-87
154BL-87	154BL-89,,	180 0 0	56 20 26,,	15.499,,	8.590	1 12.901	0 -131674.607	-69068.584	154BL-89
154BL-89	154BL-90,,	180 0 0	56 20 26,,	14.799,,	8.202	0 12.318	0 -131666.405	-69056.266	154BL-90
	TOTAL..	360 0 0		45.973	25.480	1 38.266	0		