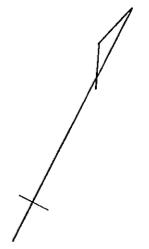
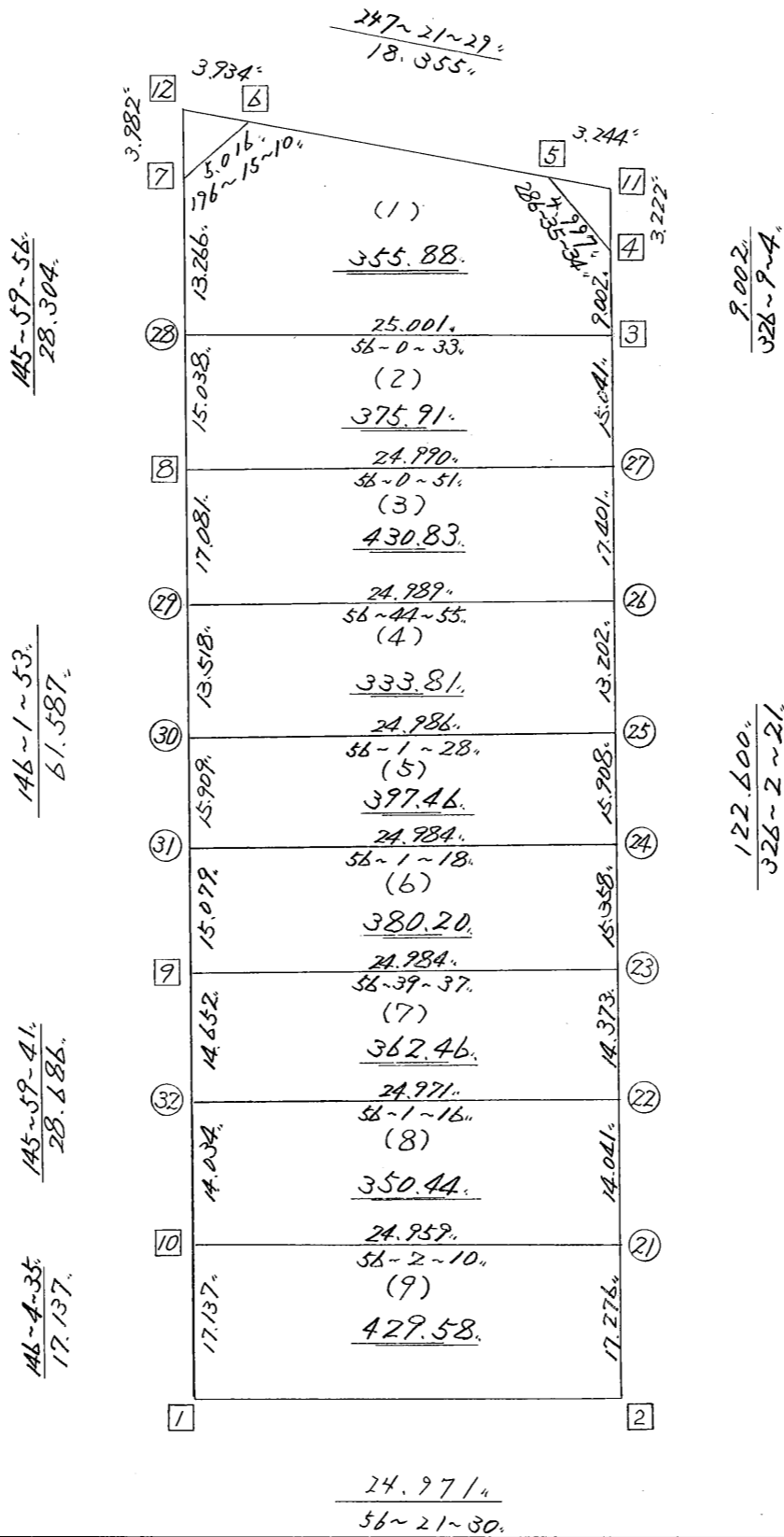


略 ☒

街区面積 = $\frac{3414.61}{m^2}$
 画地面積 = $\frac{3414.61}{m^2}$



街区点番号 1 ~ 12 筆界点番号 (21) ~ (32) 画地番号 (1) ~ (9)

*** メンセキ ケイサン (ハイイウキヨホウ) ***

チクメイ ... ミヤコタチク トチクカクセイリヨキヨウ

セイリ NO... 155BL ✓

NO.	NO.	ANGLE	AZIMUTH	LENGTH	DX	*	DY	*	X	Y	DMD	2A	カーブメンセキ
155BL-10	155BL- 1 ✓		146 4 35 //						-131637.729	-69051.119			
155BL- 1	155BL- 2 ✓	90 16 55	56 21 30 //	24.971 //	13.834	0	20.789	0	-131623.895	-69030.330	30.353	419.903402	
155BL- 2	155BL- 3 ✓	89 40 51	326 2 21 //	122.600 //	101.687	0	-68.488	0	-131522.208	-69098.818	-17.346	-1763.862702	
155BL- 3	155BL- 4 ✓	180 6 43	326 9 4 //	9.002 //	7.476	0	-5.014	0	-131514.732	-69103.832	-90.848	-679.179648	
155BL- 4	155BL- 5 ✓	140 26 30	286 35 34 //	4.997 //	1.427	0	-4.789	0	-131513.305	-69108.621	-100.651	-143.628977	
155BL- 5	155BL- 6 ✓	140 45 55	247 21 29 //	18.355 //	-7.066	0	-16.940	0	-131520.371	-69125.561	-122.380	864.737080	
155BL- 6	155BL- 7 ✓	128 53 41	196 15 10 //	5.016 //	-4.816	0	-1.404	0	-131525.187	-69126.965	-140.724	677.726784	
155BL- 7	155BL- 8 ✓	129 44 46	145 59 56 //	28.304 //	-23.465	0	15.828	0	-131548.652	-69111.137	-126.300	2963.629500	
155BL- 8	155BL- 9 ✓	180 1 57	146 1 53 //	61.587 //	-51.077	0	34.411	0	-131599.729	-69076.726	-76.061	3884.967697	
155BL- 9	155BL-10 ✓	179 57 48	145 59 41 //	28.686 //	-23.780	0	16.043	0	-131623.509	-69060.683	-25.607	608.934460	
155BL-10	155BL- 1 ✓	180 4 54	146 4 35 //	17.137 //	-14.220	0	9.564	0	-131637.729	-69051.119	0.000	0.000000	
TOTAL..	ソツカク入ウ= 10	1440	0 0		320.655	0.000	0 ✓	0.000	0 ✓				
											ハイイウキヨホウ=	6833.227596	
											1/2=	3416.61	+0.00
											メンセキ=	3416.61 ✓	

*** ムセキ ケイサン (ハ"イオウキヨホウ) ***

チクメイ ... ミヤコタ"チク トチクカクセイリシ"キ"ヨウ

セリ NO... 155BL(1)✓

NO.	NO.	ANGLE	AZIMUTH	LENGTH	DX	*	DY	*	X	Y	DMD	2A	カ-フ"ムセキ
155BL- 7	155BL-28 ✓		145 59 56						-131536.185	-69119.547			
155BL-28	155BL- 3 ✓	90 0 37	56 0 33 ✓	25.001 ✓	13.977	0	20.729	0	-131522.208	-69098.818	28.147	393.410619	
155BL- 3	155BL- 4 ✓	90 8 31	326 9 4 ✓	9.002 ✓	7.476	0	-5.014	0	-131514.732	-69103.832	43.862	327.912312	
155BL- 4	155BL- 5 ✓	140 26 30	286 35 34 ✓	4.997 ✓	1.427	0	-4.789	0	-131513.305	-69108.621	34.059	48.602193	
155BL- 5	155BL- 6 ✓	140 45 55	247 21 29 ✓	18.355 ✓	-7.066	0	-16.940	0	-131520.371	-69125.561	12.330	-87.123780	
155BL- 6	155BL- 7 ✓	128 53 41	196 15 10 ✓	5.016 ✓	-4.816	0	-1.404	0	-131525.187	-69126.965	-6.014	28.963424	
155BL- 7	155BL-28 ✓	129 44 46	145 59 56 ✓	13.266 ✓	-10.998	0	7.418	0	-131536.185	-69119.547	0.000	0.000000	
TOTAL...	ソツカク入ウ= 6	720 0 0		75.637	0.000	0 ✓	0.000	0 ✓			ハ"イムセキ=	711.764768	
											1/2=	355.88	+0.00
											ムセキ=	355.88 ✓	

セリ NO... 155BL(2)✓

155BL-28	155BL- 8 ✓		145 59 56						-131548.652	-69111.137			
155BL- 8	155BL-27 ✓	90 0 55	56 0 51 ✓	24.990 ✓	13.969	0	20.721	0	-131534.683	-69090.416	29.131	406.930939	
155BL-27	155BL- 3 ✓	90 1 30	326 2 21 ✓	15.041 ✓	12.475	0	-8.402	0	-131522.208	-69098.818	41.450	517.088750	
155BL- 3	155BL-28 ✓	89 58 12	236 0 33 ✓	25.001 ✓	-13.977	0	-20.729	0	-131536.185	-69119.547	12.319	-172.182663	
155BL-28	155BL- 8 ✓	89 59 23	145 59 56 ✓	15.038 ✓	-12.467	0	8.409	1	-131548.652	-69111.137	0.000	0.000000	
TOTAL...	ソツカク入ウ= 4	360 0 0		80.070	0.000	0 ✓	-0.001	1 ✓			ハ"イムセキ=	751.837026	
											1/2=	375.91	+0.00
											ムセキ=	375.91 ✓	

*** メンセキ ケイザン (ハ"イオウキヨホウ) ***

チクメイ ... ミヤコタ"チク トチクカクセイリシ"キ"ヨウ

セリ NO... 155BL(3)✓

NO.	NO.	ANGLE	AZIMUTH	LENGTH	DX	*	DY	*	X	Y	DMD	2A	カ-フ"メンセキ
155BL- 8	155BL-29 ✓		146 1 53						-131562.818	-69101.593			
155BL-29	155BL-26 ✓	90 43 2	56 44 55 ✓	24.989 ✓	13.702	0	20.898	0	-131549.116	-69080.695	30.442	417.116284	
155BL-26	155BL-27 ✓	89 17 26	326 2 21 ✓	17.401 ✓	14.433	0	-9.721	0	-131534.683	-69090.416	41.619	600.687027	
155BL-27	155BL- 8 ✓	89 58 30	236 0 51 ✓	24.990 ✓	-13.969	0	-20.721	0	-131548.652	-69111.137	11.177	-156.131513	
155BL- 8	155BL-29 ✓	90 1 2	146 1 53 ✓	17.081 ✓	-14.166	0	9.544	0	-131562.818	-69101.593	0.000	0.000000	
TOTAL..	ツツカクスク= 4	360 0 0		84.461	0.000	0 ✓	0.000	0 ✓			ハ"イメンセキ=	861.671798	
											1/2=	430.83	+0.00
											メンセキ=	430.83 ✓	

セリ NO... 155BL(4)✓

155BL-29	155BL-30 ✓		146 1 53						-131574.029	-69094.040			
155BL-30	155BL-25 ✓	89 59 35	56 1 28 ✓	24.986 ✓	13.963	0	20.720	0	-131560.066	-69073.320	28.273	394.775899	
155BL-25	155BL-26 ✓	90 0 53	326 2 21 ✓	13.202 ✓	10.950	0	-7.375	0	-131549.116	-69080.695	41.618	455.717100	
155BL-26	155BL-29 ✓	90 42 34	236 44 55 ✓	24.989 ✓	-13.702	0	-20.898	0	-131562.818	-69101.593	13.345	-182.853190	
155BL-29	155BL-30 ✓	89 16 58	146 1 53 ✓	13.518 ✓	-11.211	0	7.553	0	-131574.029	-69094.040	0.000	0.000000	
TOTAL..	ツツカクスク= 4	360 0 0		76.695	0.000	0 ✓	0.000	0 ✓			ハ"イメンセキ=	667.639809	
											1/2=	333.81	+0.00
											メンセキ=	333.81 ✓	

*** ムセキ ケイサン (ハイオウキヨホウ) ***

チクメイ ... ミヤコタチク トチクカクセイリシキヨウ

セリ NO... 155BL(5)✓

NO.	NO.	ANGLE	AZIMUTH	LENGTH	DX	*	DY	*	X	Y	DMD	2A	カーブムセキ
155BL-30	155BL-31 ✓		146 1 53						-131587.223	-69085.151			
155BL-31	155BL-24 ✓	89 59 25	56 1 18 ✓	24.984 ✓	13.963	0	20.718	0	-131573.260	-69064.433	29.607	413.402541	
155BL-24	155BL-25 ✓	90 1 3	326 2 21 ✓	15.908 ✓	13.194	0	-8.887	0	-131560.066	-69073.320	41.438	546.732972	
155BL-25	155BL-30 ✓	89 59 7	236 1 28 ✓	24.986 ✓	-13.963	0	-20.720	0	-131574.029	-69094.040	11.831	-165.196253	
155BL-30	155BL-31 ✓	90 0 25	146 1 53 ✓	15.909 ✓	-13.194	0	8.889	0	-131587.223	-69085.151	0.000	0.000000	
TOTAL..	ソツカクスク= 4	360 0 0		81.787	0.000	0 ✓	0.000	0 ✓			ハイムセキ=	794.939260	
											1/2=	397.46	+0.00
											ムセキ=	397.46 ✓	

セリ NO... 155BL(6)✓

155BL-31	155BL- 9 ✓		146 1 53						-131599.729	-69076.726			
155BL- 9	155BL-23 ✓	90 37 44	56 39 37 ✓	24.984 ✓	13.731	0	20.872	0	-131585.998	-69055.854	29.297	402.277107	
155BL-23	155BL-24 ✓	89 22 44	326 2 21 ✓	15.358 ✓	12.738	0	-8.579	0	-131573.260	-69064.433	41.590	529.773420	
155BL-24	155BL-31 ✓	89 58 57	236 1 18 ✓	24.984 ✓	-13.963	0	-20.718	0	-131587.223	-69085.151	12.293	-171.647159	
155BL-31	155BL- 9 ✓	90 0 35	146 1 53 ✓	15.079 ✓	-12.506	0	8.425	0	-131599.729	-69076.726	0.000	0.000000	
TOTAL..	ソツカクスク= 4	360 0 0		80.405	0.000	0 ✓	0.000	0 ✓			ハイムセキ=	760.403368	
											1/2=	380.20	+0.00
											ムセキ=	380.20 ✓	

*** メンセキ ケイサン (ハイオウキヨホウ) ***

チクメイ ... ミヤコタマチク トチクカクセイリシキヨウ

セリ NO... 155BL(7)✓

NO.	NO.	ANGLE	AZIMUTH	LENGTH	DX	*	DY	*	X	Y	DMD	2A	カ-フメンセキ
155BL- 9	155BL-32 ✓		145 59 41						-131611.875	-69068.532			
155BL-32	155BL-22 ✓	90 1 35	56 1 16 ✓	24.971 ✓	13.956	0	20.707	0	-131597.919	-69047.825	28.901	403.342356	
155BL-22	155BL-23 ✓	90 1 5	326 2 21 ✓	14.373 ✓	11.921	0	-8.029	0	-131585.998	-69055.854	41.579	495.663259	
155BL-23	155BL- 9 ✓	90 37 16	236 39 37 ✓	24.984 ✓	-13.731	0	-20.872	0	-131599.729	-69076.726	12.678	-174.081618	
155BL- 9	155BL-32 ✓	89 20 4	145 59 41 ✓	14.652 ✓	-12.146	0	8.194	0	-131611.875	-69068.532	0.000	0.000000	
TOTAL..	ソツカクスウ= 4	360 0 0		78.980	0.000	0 ✓	0.000	0 ✓			ハイメンセキ=	724.923997	
											1/2=	362.46	+0.00
											メンセキ=	362.46 ✓	

セリ NO... 155BL(8)✓

155BL-32	155BL-10 ✓		145 59 41						-131623.509	-69060.683			
155BL-10	155BL-21 ✓	90 2 29	56 2 10 ✓	24.959 ✓	13.944	0	20.701	0	-131609.565	-69039.982	28.550	398.101200	
155BL-21	155BL-22 ✓	90 0 11	326 2 21 ✓	14.041 ✓	11.646	0	-7.844	1	-131597.919	-69047.825	41.408	482.237568	
155BL-22	155BL-32 ✓	89 58 55	236 1 16 ✓	24.971 ✓	-13.956	0	-20.707	0	-131611.875	-69068.532	12.858	-179.446248	
155BL-32	155BL-10 ✓	89 58 25	145 59 41 ✓	14.034 ✓	-11.634	0	7.849	0	-131623.509	-69060.683	0.000	0.000000	
TOTAL..	ソツカクスウ= 4	360 0 0		78.005	0.000	0 ✓	-0.001	1 ✓			ハイメンセキ=	700.892520	
											1/2=	350.44	+0.00
											メンセキ=	350.44 ✓	

*** メンセキ ケイサン (ハイオウキヨホウ) ***

チクメイ ... ミヤコタチク トチクカクセイリシキヨウ

セイリ NO... 155BL(9) ✓

NO.	NO.	ANGLE	AZIMUTH	LENGTH	DX	*	DY	*	X	Y	DMD	2A	カーブメンセキ
155BL-10	155BL- 1 ✓		146 4 35						-131637.729	-69051.119			
155BL- 1	155BL- 2 ✓	90 16 55	56 21 30 ✓	24.971 ✓	13.834	0	20.789	0	-131623.895	-69030.330	30.353	419.903402	
155BL- 2	155BL-21 ✓	89 40 51	326 2 21 ✓	17.276 ✓	14.329	1	-9.651	-1	-131609.565	-69039.982	41.490	594.551700	
155BL-21	155BL-10 ✓	89 59 49	236 2 10 ✓	24.959 ✓	-13.944	0	-20.701	0	-131623.509	-69060.683	11.137	-155.294328	
155BL-10	155BL- 1 ✓	90 2 25	146 4 35 ✓	17.137 ✓	-14.220	0	9.564	0	-131637.729	-69051.119	0.000	0.000000	
TOTAL..	ソツカクスウ= 4	360 0 0		84.343	-0.001	1 ✓	0.001	-1 ✓			ハイメンセキ=	859.160774	
											1/2=	429.58	+0.00
											メンセキ=	429.58 ✓	

*** ケツコウ トラハ入 ***

チクメイ ... ミヤコタチク トチクカクセイリヨキヨウ

NO.	NO.	ANGLE	*	AZIMUTH	LENGTH	DX	*	DY	*	X	Y	NO.
	155BL- 2 ✓									-131623.895	-69030.330	155BL- 2
155BL- 2	155BL-21 ✓		326	2 21 ✓	17.276 ✓	14.329	1	-9.651	-1	-131609.565	-69039.982	155BL-21
155BL-21	155BL-22 ✓	180 0 0	326	2 21 ✓	14.041 ✓	11.646	0	-7.844	1	-131597.919	-69047.825	155BL-22
155BL-22	155BL-23 ✓	180 0 0	326	2 21 ✓	14.373 ✓	11.921	0	-8.029	0	-131585.998	-69055.854	155BL-23
155BL-23	155BL-24 ✓	180 0 0	326	2 21 ✓	15.358 ✓	12.738	0	-8.579	0	-131573.260	-69064.433	155BL-24
155BL-24	155BL-25 ✓	180 0 0	326	2 21 ✓	15.908 ✓	13.194	0	-8.887	0	-131560.066	-69073.320	155BL-25
155BL-25	155BL-26 ✓	180 0 0	326	2 21 ✓	13.202 ✓	10.950	0	-7.375	0	-131549.116	-69080.695	155BL-26
155BL-26	155BL-27 ✓	180 0 0	326	2 21 ✓	17.401 ✓	14.433	0	-9.721	0	-131534.683	-69090.416	155BL-27
155BL-27	155BL- 3 ✓	180 0 0	326	2 21 ✓	15.041 ✓	12.475	0	-8.402	0	-131522.208	-69098.818	155BL- 3
	TOTAL..	1260 0 0			122.600 ✓	101.686	1 ✓	-68.488	0 ✓			
	155BL- 7 ✓									-131525.187	-69126.965	155BL- 7
155BL- 7	155BL-28 ✓		145	59 56 ✓	13.266 ✓	-10.998	0	7.418	0	-131536.185	-69119.547	155BL-28
155BL-28	155BL- 8 ✓	180 0 0	145	59 56 ✓	15.038 ✓	-12.467	0	8.409	1	-131548.652	-69111.137	155BL- 8
	TOTAL..	180 0 0			28.304 ✓	-23.465	0 ✓	15.827	1 ✓			
	155BL- 8 ✓									-131548.652	-69111.137	155BL- 8
155BL- 8	155BL-29 ✓		146	1 53 ✓	17.081 ✓	-14.166	0	9.544	0	-131562.818	-69101.593	155BL-29
155BL-29	155BL-30 ✓	180 0 0	146	1 53 ✓	13.518 ✓	-11.211	0	7.553	0	-131574.029	-69094.040	155BL-30
155BL-30	155BL-31 ✓	180 0 0	146	1 53 ✓	15.909 ✓	-13.194	0	8.889	0	-131587.223	-69085.151	155BL-31
155BL-31	155BL- 9 ✓	180 0 0	146	1 53 ✓	15.079 ✓	-12.506	0	8.425	0	-131599.729	-69076.726	155BL- 9
	TOTAL..	540 0 0			61.587 ✓	-51.077	0 ✓	34.411	0 ✓			
	155BL- 9 ✓									-131599.729	-69076.726	155BL- 9

*** ケツコウ トラハース ***

チクメイ ... ミヤコタチク トチクカクセイリシキヨウ

NO.	NO.	ANGLE	*	AZIMUTH	LENGTH	DX	*	DY	*	X	Y	NO.
155BL-9	155BL-32			145 59 41	14.652	-12.146	0	8.194	0	-131611.875	-69068.532	155BL-32
155BL-32	155BL-10	180 0 0		145 59 41	14.034	-11.634	0	7.849	0	-131623.509	-69060.683	155BL-10
	TOTAL	180 0 0			28.686	-23.780	0	16.043	0			