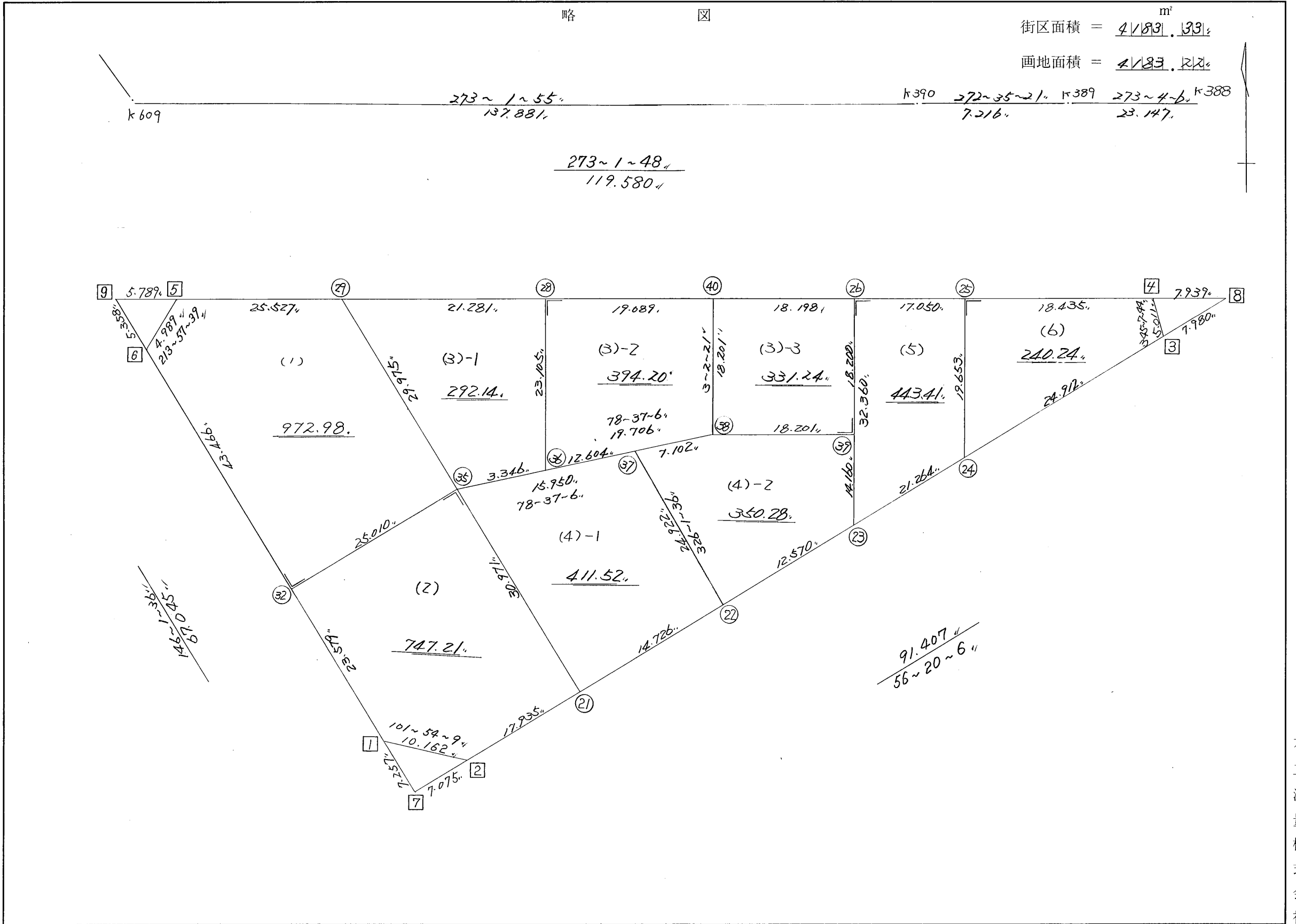


略 図

街区面積 =  $4183.33$  m<sup>2</sup>

画地面積 =  $4183.22$

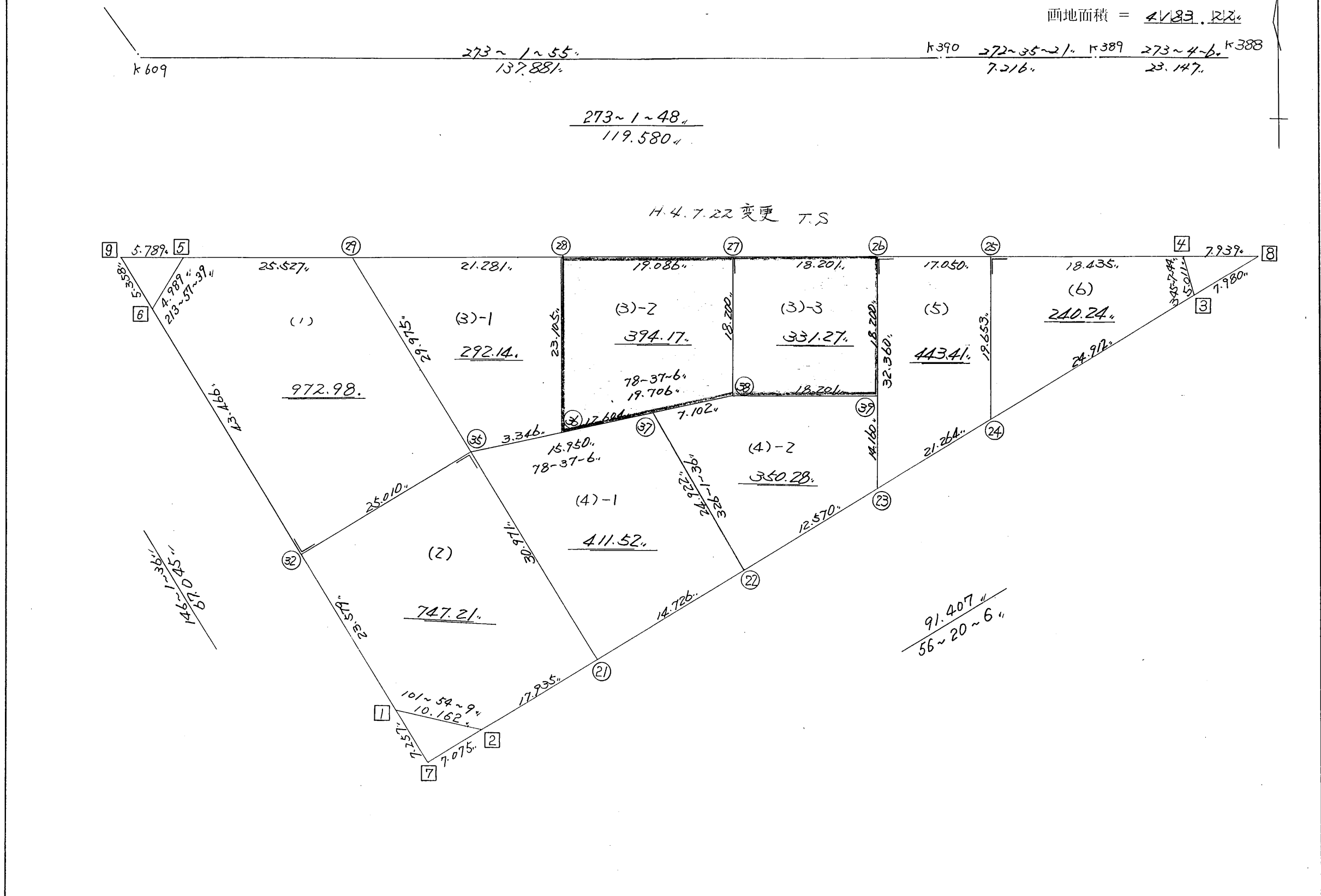


街区点番号 1 ~ 9 , 筆界点番号 (21) ~ (40) , 画地番号 ( / ) ~ ( 6 ) ,

略 図

街区面積 =  $4183.133$  m<sup>2</sup>

画地面積 =  $4183.212$



街区点番号 1 ~ 9 , 筆界点番号 21 ~ 39 , 画地番号 ( / ) ~ ( 6 ) ,

\*\*\* メンセキ ケイザン (ハ"イオウキヨホウ) \*\*\*

チクメイ ... ミヤコタ"チク トチクカクセイリシ"キ"ヨウ

セリ NO... 159BL

NO.	NO.	ANGLE	AZIMUTH	LENGTH	DX	*	DY	*	X	Y	DMD	2A	カ-フ"メンセキ
159BL- 6	159BL- 1		146 1 36						-131631.096	-68989.297			
159BL- 1	159BL- 2	135 52 33	101 54 9	10.162	-2.096	0	9.944	0	-131633.192	-68979.353	47.409	-99.369264	
159BL- 2	159BL- 3	134 25 57	56 20 6	91.407	50.670	0	76.077	0	-131582.522	-68903.276	133.430	6760.898100	
159BL- 3	159BL- 4	108 47 38	345 7 44	5.011	4.843	0	-1.286	0	-131577.679	-68904.562	208.221	1008.414303	
159BL- 4	159BL- 5	107 54 4	273 1 48	119.580	6.321	0	-119.413	0	-131571.358	-69023.975	87.522	553.226562	
159BL- 5	159BL- 6	120 55 51	213 57 39	4.989	-4.138	0	-2.787	0	-131575.496	-69026.762	-34.678	143.497564	
159BL- 6	159BL- 1	112 3 57	146 1 36	67.045	-55.600	0	37.465	0	-131631.096	-68989.297	0.000	0.000000	
TOTAL..	ツツカクスク= 6	720 0 0		298.194	0.000	0	0.000	0			ハ"イメンセキ=	8366.667265	
											1/2=	4183.33	+0.00
											メンセキ=	4183.33	

\*\*\* メンセキ ケイサク (ハイオウキヨホウ) \*\*\*

チクメイ ... ミヤコタチク トチクカクセイリシキヨウ

セリ NO... 159BL(1)✓

NO.	NO.	ANGLE	AZIMUTH	LENGTH	DX	*	DY	*	X	Y	DMD	2A	カーブメンセキ
159BL- 6	159BL-32 ✓		146 1 36						-131611.542	-69002.473			
159BL-32	159BL-35 ✓	90 0 0	56 1 36 ✓	25.010 ✓	13.976	0	20.741	-1	-131597.566	-68981.733	45.029	629.325304	
159BL-35	159BL-29 ✓	90 0 0	326 1 36 ✓	29.975 ✓	24.858	0	-16.750	0	-131572.708	-68998.483	49.019	1218.514302	
159BL-29	159BL- 5 ✓	127 0 12	273 1 48 ✓	25.527 ✓	1.349	1	-25.491	-1	-131571.358	-69023.975	6.777	9.148950	
159BL- 5	159BL- 6 ✓	120 55 51	213 57 39 ✓	4.989 ✓	-4.138	0	-2.787	0	-131575.496	-69026.762	-21.502	88.975276	
159BL- 6	159BL-32 ✓	112 3 57	146 1 36 ✓	43.466 ✓	-36.046	0	24.289	0	-131611.542	-69002.473	0.000	0.000000	
TOTAL..	ソツカクスク= 5	540 0 0		128.967	-0.001	1 ✓	0.002	-2 ✓			ハイメンセキ=	1945.963832	
											1/2=	972.98	+0.00
											メンセキ=	972.98 ✓	

セリ NO... 159BL(2)✓

159BL-32	159BL- 1 ✓		146 1 36						-131631.096	-68989.297			
159BL- 1	159BL- 2 ✓	135 52 33	101 54 9 ✓	10.162 ✓	-2.096	0	9.944	0	-131633.192	-68979.353	23.120	-48.459520	
159BL- 2	159BL-21 ✓	134 25 57	56 20 6 ✓	17.935 ✓	9.942	0	14.927	0	-131623.250	-68964.426	47.991	477.126522	
159BL-21	159BL-35 ✓	89 41 30	326 1 36 ✓	30.971 ✓	25.684	0	-17.307	0	-131597.566	-68981.733	45.611	1171.472924	
159BL-35	159BL-32 ✓	90 0 0	236 1 36 ✓	25.010 ✓	-13.976	0	-20.741	1	-131611.542	-69002.473	7.564	-105.714464	
159BL-32	159BL- 1 ✓	90 0 0	146 1 36 ✓	23.579 ✓	-19.554	0	13.176	0	-131631.096	-68989.297	0.000	0.000000	
TOTAL..	ソツカクスク= 5	540 0 0		107.657	0.000	0 ✓	-0.001	1 ✓			ハイメンセキ=	1494.425462	
											1/2=	747.21	+0.00
											メンセキ=	747.21 ✓	

\*\*\* メンセキ ケイサン (ハ"イオウキヨホウ) \*\*\*

チクメイ ... ミヤコタ"チク トチクカクセイリシ"キ"ヨウ

セリ NO... 159BL(3)-1

NO.	NO.	ANGLE	AZIMUTH	LENGTH	DX	*	DY	*	X	Y	DMD	2A	カ-フ"メンセキ
159BL-29	159BL-35		146 1 36						-131597.566	-68981.733			
159BL-35	159BL-36	112 35 30	78 37 6	3.346	0.660	0	3.280	0	-131596.906	-68978.453	20.030	13.219800	
159BL-36	159BL-28	104 24 42	3 1 48	23.105	23.073	0	1.221	0	-131573.833	-68977.232	24.531	566.003763	
159BL-28	159BL-29	90 0 0	273 1 48	21.281	1.125	0	-21.251	0	-131572.708	-68998.483	4.501	5.063625	
159BL-29	159BL-35	52 59 48	146 1 36	29.975	-24.858	0	16.750	0	-131597.566	-68981.733	0.000	0.000000	
TOTAL..	ソツカクスウ= 4	360 0 0		77.707	0.000	0	0.000	0			ハ"イメンセキ=	584.287188	
											1/2=	292.14	+0.00
											メンセキ=	292.14	

セリ NO... 159BL(3)-2

159BL-28	159BL-36		183 1 48						-131596.906	-68978.453			
159BL-36	159BL-38	75 35 18	78 37 6	19.706	3.889	0	19.318	0	-131593.017	-68959.135	18.097	70.379233	
159BL-38	159BL-40	104 25 15	3 2 21	18.201	18.175	0	0.965	0	-131574.842	-68958.170	38.380	697.556500	
159BL-40	159BL-28	89 59 27	273 1 48	19.089	1.009	0	-19.062	0	-131573.833	-68977.232	20.283	20.465547	
159BL-28	159BL-36	90 0 0	183 1 48	23.105	-23.073	0	-1.221	0	-131596.906	-68978.453	0.000	0.000000	
TOTAL..	ソツカクスウ= 4	360 0 0		80.101	0.000	0	0.000	0			ハ"イメンセキ=	788.401280	
											1/2=	394.20	+0.00
											メンセキ=	394.20	

\*\*\* メンセキ ケイザン (ハ"イオウキヨホウ) \*\*\*

チクメイ ... ミヤコタ"チク トチクカクセイリシ"キ"ヨウ

セリ NO... 159BL(3)-3

NO.	INO.	ANGLE	AZIMUTH	LENGTH	DX	*	DY	*	X	Y	DMD	2A	カ-ク"メンセキ
159BL-40	159BL-38		183 2 21						-131593.017	-68959.135			
159BL-38	159BL-39	89 59 27	93 1: 48	18.201	-0.962	0	18.176	0	-131593.979	-68940.959	17.211	-16.556982	
159BL-39	159BL-26	90 0 0	3 1: 48	18.200	18.175	0	0.962	0	-131575.804	-68939.997	36.349	660.643075	
159BL-26	159BL-40	90 0 0	273 1: 48	18.198	0.962	0	-18.173	0	-131574.842	-68958.170	19.138	18.410756	
159BL-40	159BL-38	90 0 33	183 2 21	18.201	-18.175	0	-0.965	0	-131593.017	-68959.135	0.000	0.000000	
TOTAL..	ソツカクスウ= 4	360 0 0		72.800	0.000	0	0.000	0			ハ"イメンセキ=	662.496849	
											1/2=	331.24	+0.00
											メンセキ=	331.24	

セリ NO... 159BL(4)-1

159BL-35	159BL-21		146 1 36						-131623.250	-68964.426			
159BL-21	159BL-22	90 18 30	56 20 6	14.726	8.163	0	12.256	0	-131615.087	-68952.170	29.563	241.322769	
159BL-22	159BL-37	89 41 30	326 1: 36	24.922	20.668	0	-13.927	0	-131594.419	-68966.097	27.892	576.471856	
159BL-37	159BL-35	112 35 30	258 37: 6	15.950	-3.148	1	-15.636	0	-131597.566	-68981.733	-1.671	5.258637	
159BL-35	159BL-21	67 24 30	146 1 36	30.971	-25.684	0	17.307	0	-131623.250	-68964.426	0.000	0.000000	
TOTAL..	ソツカクスウ= 4	360 0 0		86.569	-0.001	1	0.000	0			ハ"イメンセキ=	823.053262	
											1/2=	411.52	+0.00
											メンセキ=	411.52	

\*\*\* メンセキ ケイサン (ハ"イオウキヨホウ) \*\*\*

チクメイ ... ミヤコタ"チク トチクカクセイリシ"キ"ヨウ

セリ NO... 159BL <sup>(4)-2</sup>~~(9)~~

NO.	NO.	ANGLE	AZIMUTH	LENGTH	DX	*	DY	*	X	Y	DMD	2A	カ-フ"メンセキ
159BL-37	159BL-22✓		146 1 36✓						-131615.087	-68952.170			
159BL-22	159BL-23✓	90 18 30	56 20 6✓	12.570✓	6.968	0	10.462	0	-131608.119	-68941.708	24.389	169.942552	
159BL-23	159BL-39✓	126 41 42	3 1 48✓	14.160✓	14.140	0	0.748	1	-131593.979	-68940.959	35.600	503.384000	
159BL-39	159BL-38✓	90 0 0	273 1 48✓	18.201✓	0.962	0	-18.176	0	-131593.017	-68959.135	18.173	17.482426	
159BL-38	159BL-37✓	165 35 18	258 37 6✓	7.102✓	-1.402	0	-6.962	0	-131594.419	-68966.097	-6.965	9.764930	
159BL-37	159BL-22✓	67 24 30	146 1 36	24.922✓	-20.668	0	13.927	0	-131615.087	-68952.170	0.000	0.000000	
TOTAL..	ソツカクスク= 5	540 0 0		76.955	0.000	0✓	-0.001	1✓			ハ"イメンセキ=	700.573908	
											1/2=	350.28	+0.00
											メンセキ=	350.28✓	

セリ NO... 159BL <sup>(5)</sup>~~(10)~~

159BL-26	159BL-23✓		183 1 48✓						-131608.119	-68941.708			
159BL-23	159BL-24✓	53 18 18	56 20 6✓	21.264✓	11.787	1	17.698	0	-131596.331	-68924.010	15.987	188.454756	
159BL-24	159BL-25✓	126 41 42	3 1 48✓	19.653✓	19.626	0	1.039	0	-131576.705	-68922.971	34.724	681.493224	
159BL-25	159BL-26✓	90 0 0	273 1 48✓	17.050✓	0.901	0	-17.026	0	-131575.804	-68939.997	18.737	16.882037	
159BL-26	159BL-23✓	90 0 0	183 1 48✓	32.360✓	-32.315	0	-1.711	0	-131608.119	-68941.708	0.000	0.000000	
TOTAL..	ソツカクスク= 4	360 0 0		90.327	-0.001	1✓	0.000	0✓			ハ"イメンセキ=	886.830017	
											1/2=	443.41	+0.00
											メンセキ=	443.41✓	

\*\*\* メンセキ ケイサシ (ハイオウキヨボウ) \*\*\*

チクメイ ... ミヤコタマチク トチクカクセイリシキヨウ

レイ NO... 159BL(6)✓

NO.	INO.	ANGLE	AZIMUTH	LENGTH	DX	*	DY	*	X	Y	DMD	2A	カ-クメンセキ
159BL-25	159BL-24✓		183 1 48						-131596.331	-68924.010			
159BL-24	159BL-3✓	53 18 18	56 20 6✓	24.912✓	13.810	-1	20.734	0	-131582.522	-68903.276	19.695	271.968255	
159BL-3	159BL-4✓	108 47 38	345 7 44✓	5.011✓	4.843	0	-1.286	0	-131577.679	-68904.562	39.143	189.569549	
159BL-4	159BL-25✓	107 54 4	273 1 48✓	18.435✓	0.974	0	-18.409	0	-131576.705	-68922.971	19.448	18.942352	
159BL-25	159BL-24✓	90 0 0	183 1 48✓	19.653✓	-19.626	0	-1.039	0	-131596.331	-68924.010	0.000	0.000000	
TOTAL..	ソツカクスク= 4	360 0 0		68.011	0.001	-1 ✓	0.000	0 ✓				ハイメンセキ= 480.480156	
												1/2= 240.24	+0.00
												メンセキ= 240.24✓	



チクメイ ... ミヤコタチク トチクカクセイリシキヨウ

NO.	NO.	ANGLE *	AZIMUTH	LENGTH	DX	*	DY	*	X	Y	NO.
	159BL- 2 ✓								-131633.192	-68979.353	159BL- 2
159BL- 2	159BL-21 ✓		56 20 6 ✓	17.935 ✓	9.942	0	14.927	0	-131623.250	-68964.426	159BL-21
159BL-21	159BL-22 ✓	180 0 0	56 20 6 ✓	14.726 ✓	8.163	0	12.256	0	-131615.087	-68952.170	159BL-22
159BL-22	159BL-23 ✓	180 0 0	56 20 6 ✓	12.570 ✓	6.968	0	10.462	0	-131608.119	-68941.708	159BL-23
159BL-23	159BL-24 ✓	180 0 0	56 20 6 ✓	21.264 ✓	11.787	1	17.698	0	-131596.331	-68924.010	159BL-24
159BL-24	159BL- 3 ✓	180 0 0	56 20 6 ✓	24.912 ✓	13.810	-1	20.734	0	-131582.522	-68903.276	159BL- 3
	TOTAL..	720 0 0		91.407 ✓	50.670	0 ✓	76.077	0 ✓			
	159BL- 4 ✓								-131577.679	-68904.562	159BL- 4
159BL- 4	159BL-25 ✓		273 1 48 ✓	18.435 ✓	0.974	0	-18.409	0	-131576.705	-68922.971	159BL-25
159BL-25	159BL-26 ✓	180 0 0	273 1 48 ✓	17.050 ✓	0.901	0	-17.026	0	-131575.804	-68939.997	159BL-26
159BL-26	159BL-40 ✓	180 0 0	273 1 48 ✓	18.198 ✓	0.962	0	-18.173	0	-131574.842	-68958.170	159BL-40
159BL-40	159BL-28 ✓	180 0 0	273 1 48 ✓	19.089 ✓	1.009	0	-19.062	0	-131573.833	-68977.232	159BL-28
159BL-28	159BL-29 ✓	180 0 0	273 1 48 ✓	21.281 ✓	1.125	0	-21.251	0	-131572.708	-68998.483	159BL-29
159BL-29	159BL- 5 ✓	180 0 0	273 1 48 ✓	25.527 ✓	1.349	1	-25.491	-1	-131571.358	-69023.975	159BL- 5
	TOTAL..	900 0 0		119.580 ✓	6.320	1 ✓	-119.412	-1 ✓			
	159BL- 6 ✓								-131575.496	-69026.762	159BL- 6
159BL- 6	159BL-32 ✓		146 1 36 ✓	43.466 ✓	-36.046	0	24.289	0	-131611.542	-69002.473	159BL-32
159BL-32	159BL- 1 ✓	180 0 0	146 1 36 ✓	23.579 ✓	-19.554	0	13.176	0	-131631.096	-68989.297	159BL- 1
	TOTAL..	180 0 0		67.045 ✓	-55.600	0 ✓	37.465	0 ✓			
	159BL-35 ✓								-131597.566	-68981.733	159BL-35
159BL-35	159BL-36 ✓		78 37 6 ✓	3.346 ✓	0.660	0	3.280	0	-131596.906	-68978.453	159BL-36

\*\*\* ケツコウ トラハ入 \*\*\*

チクメイ... ミヤコタチク トチクカクセイリシキヨウ

NO.	NO..	ANGLE *	AZIMUTH	LENGTH	DX	DY	X	Y	NO.
159BL-36	159BL-38 ✓	180 0 0	78 37 6 ✓	19.706 ✓	3.889	19.318	-131593.017	-68959.135	159BL-38
	TOTAL...	180 0 0		23.052 ✓	4.549	22.598			
	159BL-35 ✓						-131597.566	-68981.733	159BL-35
159BL-35	159BL-37 ✓		78 37 6 ✓	15.950 ✓	3.148	15.636	-131594.419	-68966.097	159BL-37
159BL-37	159BL-38 ✓	180 0 0	78 37 6 ✓	7.102 ✓	1.402	6.962	-131593.017	-68959.135	159BL-38
	TOTAL...	180 0 0		23.052 ✓	4.550	22.598			
	159BL-35 ✓						-131597.566	-68981.733	159BL-35
159BL-35	159BL-36 ✓		78 37 6 ✓	3.346 ✓	0.660	3.280	-131596.906	-68978.453	159BL-36
159BL-36	159BL-37 ✓	180 0 0	78 37 6 ✓	12.604 ✓	2.487	12.356	-131594.419	-68966.097	159BL-37
159BL-37	159BL-38 ✓	180 0 0	78 37 6 ✓	7.102 ✓	1.402	6.962	-131593.017	-68959.135	159BL-38
	TOTAL...	360 0 0		23.052 ✓	4.549	22.598			
	159BL-21 ✓						-131623.250	-68964.426	159BL-21
159BL-21	159BL-35 ✓		326 1 36 ✓	30.971 ✓	25.684	-17.307	-131597.566	-68981.733	159BL-35
159BL-35	159BL-29 ✓	180 0 0	326 1 36 ✓	29.975 ✓	24.858	-16.750	-131572.708	-68998.483	159BL-29
	TOTAL...	180 0 0		60.946 ✓	50.542	-34.057			
	159BL-23 ✓						-131608.119	-68941.708	159BL-23
159BL-23	159BL-39 ✓		3 1 48 ✓	14.160 ✓	14.140	0.748	-131593.979	-68940.959	159BL-39
159BL-39	159BL-26 ✓	180 0 0	3 1 48 ✓	18.200 ✓	18.175	0.962	-131575.804	-68939.997	159BL-26
	TOTAL...	180 0 0		32.360 ✓	32.315	1.710			

\*\*\* メンセキ ケイザン (ハ"イオウキヨホウ) \*\*\*

チクメイ ... ミヤコタ"チク トチクカクセイリシ"キ"ヨウ

ペリ NO... 159BL <sup>(3)-1</sup> ~~(5)~~

NO.	NO.	ANGLE	AZIMUTH	LENGTH	DX	*	DY	*	X	Y	DMD	2A	カ-フ"メンセキ
159BL-29	159BL-35✓		146 1 36✓						-131597.566	-68981.733			
159BL-35	159BL-36✓	112 35 30	78 37 6✓	3.346✓	0.660	0	3.280	0	-131596.906	-68978.453	20.030	13.219800	
159BL-36	159BL-28✓	104 24 42	3 1 48✓	23.105✓	23.073	0	1.221	0	-131573.833	-68977.232	24.531	566.003763	
159BL-28	159BL-29✓	90 0 0	273 1 48✓	21.281✓	1.125	0	-21.251	0	-131572.708	-68998.483	4.501	5.063625	
159BL-29	159BL-35✓	52 59 48	146 1 36✓	29.975✓	-24.858	0	16.750	0	-131597.566	-68981.733	0.000	0.000000	
TOTAL..	ソツカクスタウ= 4	360 0 0		77.707	0.000	0✓	0.000	0✓			ハイメンセキ=	584.287188	
											1/2=	292.14	+0.00
											メンセキ=	292.14✓	

ペリ NO... 159BL <sup>(3)-2</sup> ~~(6)~~

159BL-28	159BL-36✓		183 1 48✓						-131596.906	-68978.453			
159BL-36	159BL-38✓	75 35 18	78 37 6✓	19.706✓	3.889	0	19.318	0	-131593.017	-68959.135	18.097	70.379233	
159BL-38	159BL-27✓	104 24 42	3 1 48✓	18.200✓	18.175	0	0.962	0	-131574.842	-68958.173	38.377	697.501975	
159BL-27	159BL-28✓	90 0 0	273 1 48✓	19.086✓	1.009	0	-19.059	0	-131573.833	-68977.232	20.280	20.462520	
159BL-28	159BL-36✓	90 0 0	183 1 48✓	23.105✓	-23.073	0	-1.221	0	-131596.906	-68978.453	0.000	0.000000	
TOTAL..	ソツカクスタウ= 4	360 0 0		80.097	0.000	0✓	0.000	0✓			ハイメンセキ=	788.343728	
											1/2=	394.17	+0.00
											メンセキ=	394.17✓	

\*\*\* メンセキ ケイザン (ハ"イオウキヨホウ) \*\*\*

チクメイ ... ミヤコタ"チク トチカクセイリシ"キ"ヨウ

レイ NO... 159BL ~~(7)~~ <sup>(3)</sup>-3

NO.	NO.	ANGLE	AZIMUTH	LENGTH	DX	*	DY	*	X	Y	DMD	2A	カ-ク"メンセキ
159BL-27	159BL-38✓		183 1 48✓						-131593.017	-68959.135			
159BL-38	159BL-39✓	90 0 0	93 1 48✓	18.201✓	-0.962	0	18.176	0	-131593.979	-68940.959	17.214	-16.559868	
159BL-39	159BL-26✓	90 0 0	3 1 48✓	18.200✓	18.175	0	0.962	0	-131575.804	-68939.997	36.352	660.697600	
159BL-26	159BL-27✓	90 0 0	273 1 48✓	18.201✓	0.962	0	-18.176	0	-131574.842	-68958.173	19.138	18.410756	
159BL-27	159BL-38✓	90 0 0	183 1 48✓	18.200✓	-18.175	0	-0.962	0	-131593.017	-68959.135	0.000	0.000000	
TOTAL..	ソツカクスウ= 4	360 0 0		72.802	0.000	0✓	0.000	0✓			ハ"イメンセキ=	662.548488	
											1/2=	331.27	+0.00
											メンセキ=	331.27✓	

レイ NO... 159BL ~~(8)~~ <sup>(4)</sup>-1

159BL-35	159BL-21✓		146 1 36✓						-131623.250	-68964.426			
159BL-21	159BL-22✓	90 18 30	56 20 6✓	14.726✓	8.163	0	12.256	0	-131615.087	-68952.170	29.563	241.322769	
159BL-22	159BL-37✓	89 41 30	326 1 36✓	24.922✓	20.668	0	-13.927	0	-131594.419	-68966.097	27.892	576.471856	
159BL-37	159BL-35✓	112 35 30	258 37 6✓	15.950✓	-3.148	1	-15.636	0	-131597.566	-68981.733	-1.671	5.258637	
159BL-35	159BL-21✓	67 24 30	146 1 36✓	30.971✓	-25.684	0	17.307	0	-131623.250	-68964.426	0.000	0.000000	
TOTAL..	ソツカクスウ= 4	360 0 0		86.569	-0.001	1✓	0.000	0✓			ハ"イメンセキ=	823.053262	
											1/2=	411.52	+0.00
											メンセキ=	411.52✓	

H.4.7.22 変更 T.S