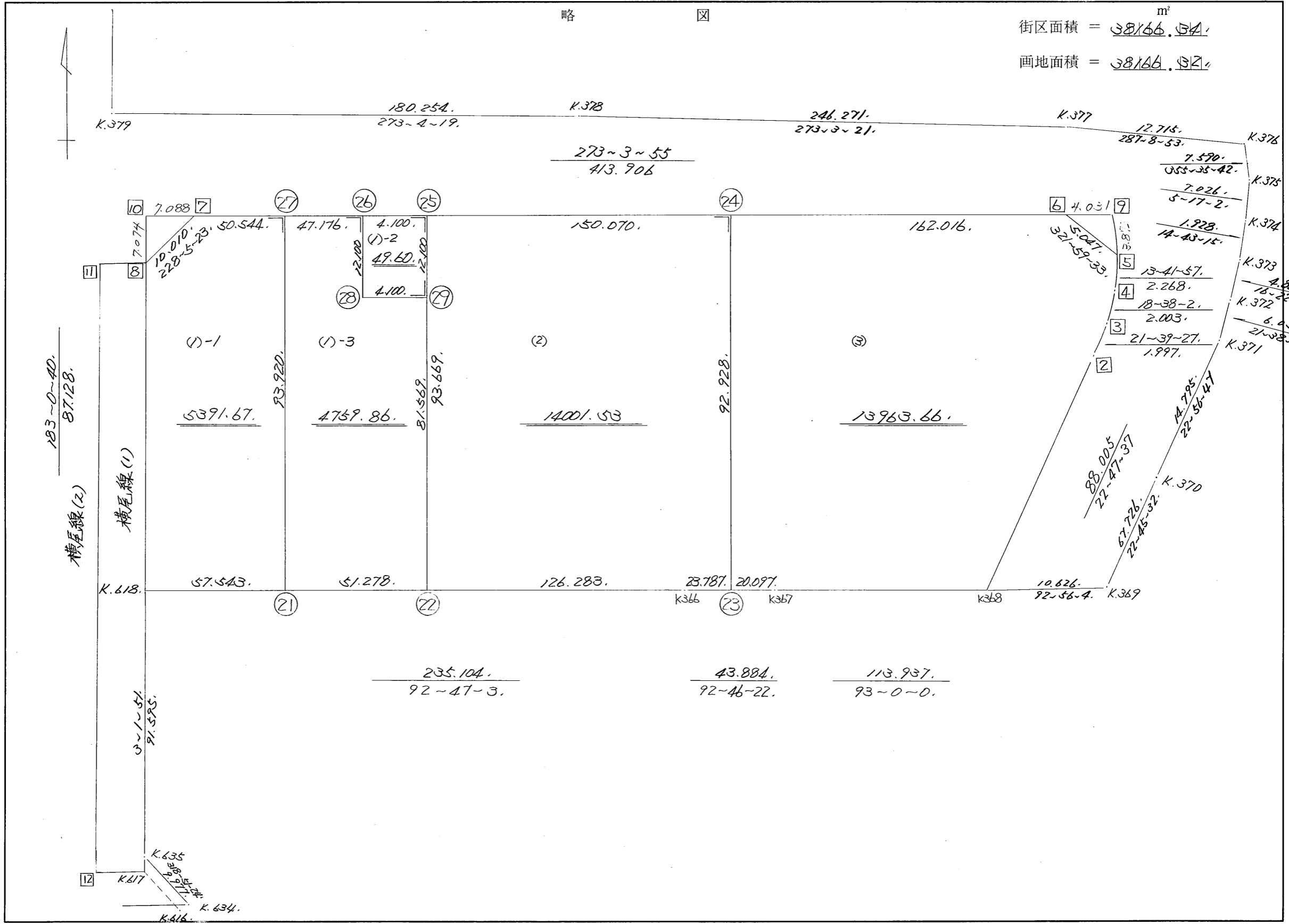


街廓原子一覽表用紙

(164' BL)

略 図

街区面積 = 38166.54 m²
画地面積 = 38166.32

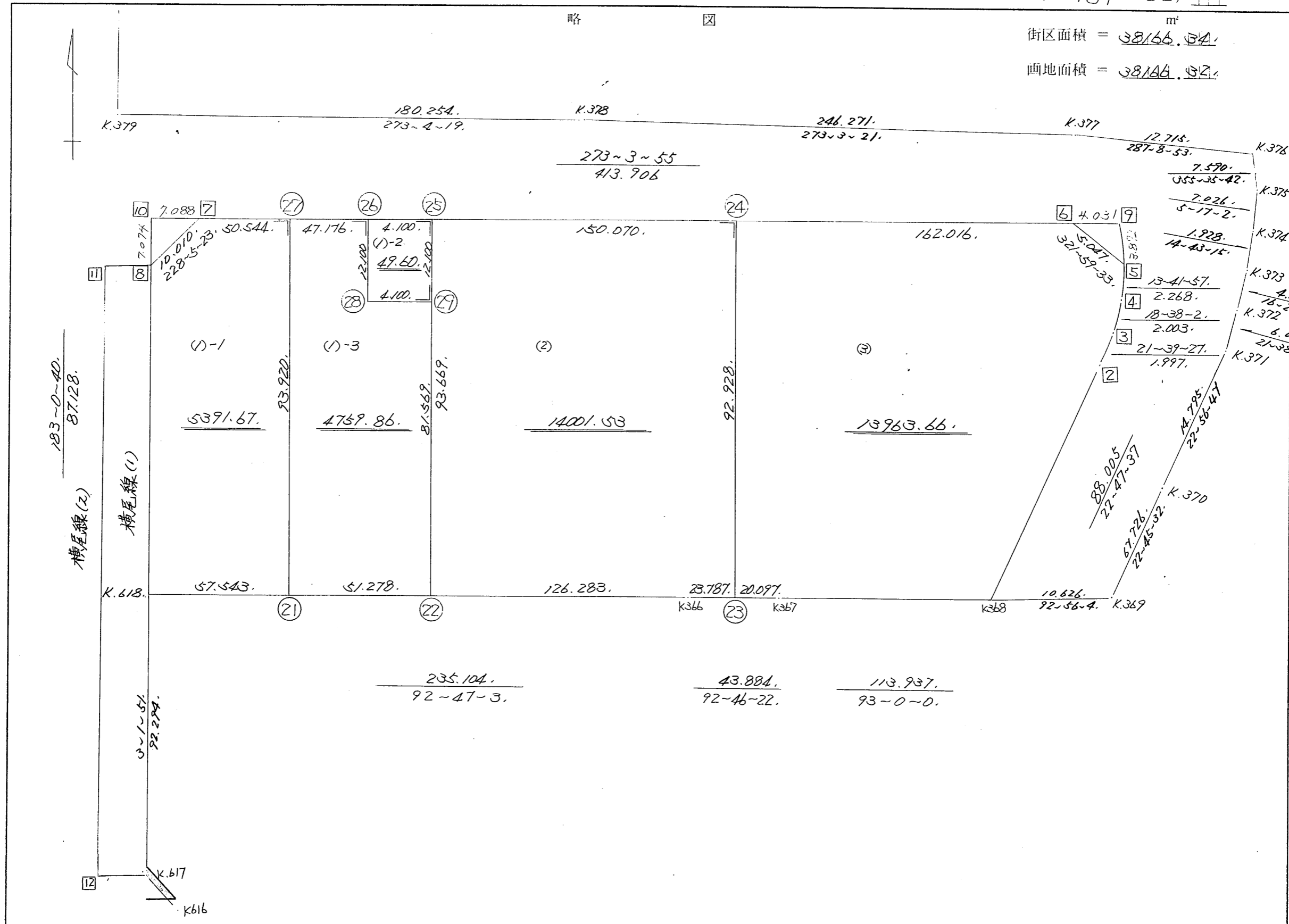


街区点番号 1 ~ 10 筆界点番号 (21) ~ (29) 画地番号 (1) ~ (3)

略 図

街区面積 = 38166.54 m²

画地面積 = 38166.52



不二測量株式会社

街区点番号 1 ~ 10 筆界点番号 (21) ~ (29) 画地番号 (1) ~ (3)

*** メンセキ ケイサン (ハ"イオウキヨホウ) ***

チクメイ ... ミヤコタ"チク トチクカクセイリシ"キ"ヨウ

セリ NO... 164BL

| NO. | NO. | ANGLE | AZIMUTH | LENGTH | DX | * | DY | * | X | Y | DMD | 2A1 | カ-フ"メンセキ |
|----------|------------|-----------|-------------|-----------|---------|-----|----------|-----|-------------|------------|----------|--------------|----------|
| 164BL- 8 | K.618 ✓ | | 183 0 40 | | | | | | -132102.830 | -68776.021 | | | |
| K.618 | K.366 ✓ | 89 46 23 | 92 47 3 ✓ | 235.104 ✓ | -11.420 | 0 | 234.826 | 0 | -132114.250 | -68541.195 | 230.249 | -2629.443580 | |
| K.366 | K.367 ✓ | 179 59 19 | 92 46 22 ✓ | 43.884 ✓ | -2.123 | 0 | 43.833 | 0 | -132116.373 | -68497.362 | 508.908 | -1080.411684 | |
| K.367 | K.368 ✓ | 180 13 38 | 93 0 0 ✓ | 113.937 ✓ | -5.963 | 0 | 113.781 | 0 | -132122.336 | -68383.581 | 666.522 | -3974.470686 | |
| K.368 | 164BL- 2 ✓ | 109 47 37 | 22 47 37 ✓ | 88.005 ✓ | 81.132 | 0 | 34.094 | 0 | -132041.204 | -68349.487 | 814.397 | 66073.657404 | |
| 164BL- 2 | 164BL- 3 ✓ | 178 51 50 | 21 39 27 ✓ | 1.997 ✓ | 1.856 | 0 | 0.737 | 0 | -132039.348 | -68348.750 | 849.228 | 1576.167168 | |
| 164BL- 3 | 164BL- 4 ✓ | 176 58 35 | 18 38 2 ✓ | 2.003 ✓ | 1.898 | 0 | 0.640 | 0 | -132037.450 | -68348.110 | 850.605 | 1614.448290 | |
| 164BL- 4 | 164BL- 5 ✓ | 175 3 55 | 13 41 57 ✓ | 2.268 ✓ | 2.203 | 0 | 0.537 | 0 | -132035.247 | -68347.573 | 851.782 | 1876.475746 | |
| 164BL- 5 | 164BL- 6 ✓ | 128 17 36 | 321 59 33 ✓ | 5.047 ✓ | 3.977 | 0 | -3.108 | 0 | -132031.270 | -68350.681 | 849.211 | 3377.312147 | |
| 164BL- 6 | 164BL- 7 ✓ | 131 4 22 | 273 3 55 ✓ | 413.906 ✓ | 22.133 | 1 | -413.314 | 0 | -132009.136 | -68763.995 | 432.789 | 9579.351726 | |
| 164BL- 7 | 164BL- 8 ✓ | 135 1 28 | 228 5 23 ✓ | 10.010 ✓ | -6.686 | 0 | -7.449 | 0 | -132015.822 | -68771.444 | 12.026 | -80.405836 | |
| 164BL- 8 | K.618 ✓ | 134 55 17 | 183 0 40 ✓ | 87.128 ✓ | -87.008 | 0 | -4.577 | 0 | -132102.830 | -68776.021 | 0.000 | 0.000000 | |
| TOTAL.. | ソツカクスク= 11 | 1620 | 0 0 | 1003.289 | -0.001 | 1 ✓ | 0.000 | 0 ✓ | | | ハ"イメンセキ= | 76332.680695 | |
| | | | | | | | | | | | 1/2= | 38166.34 | +0.00 |
| | | | | | | | | | | | メンセキ= | 38166.34 ✓ | |

*** メンセキ ケイサン (ハ"イオウキヨホウ) ***

チクメイ ... ミヤコタ"チク トチクカクセイリシ"キ"ヨウ

セリ NO... 164BL(1)-1 ✓

| NO. | NO. | ANGLE | AZIMUTH | LENGTH | DX | * | DY | * | X | Y | DMD | 2A | カーブ"メンセキ |
|----------|------------|-----------|------------|----------|--------|-----|---------|-----|-------------|------------|----------|--------------|----------|
| 164BL- 8 | K.618 ✓ | | 183 0 40 | | | | | | -132102.830 | -68776.021 | | | |
| K.618 | 164BL-21 ✓ | 89 46 23 | 92 47 3 ✓ | 57.543 ✓ | -2.795 | 0 | 57.475 | 0 | -132105.625 | -68718.546 | 52.898 | -147.849910 | |
| 164BL-21 | 164BL-27 ✓ | 90 16 5.2 | 3 3 55 ✓ | 93.920 ✓ | 93.786 | 0 | 5.022 | 1 | -132011.839 | -68713.523 | 115.396 | 10822.529256 | |
| 164BL-27 | 164BL- 7 ✓ | 90 0 0 | 273 3 55 ✓ | 50.544 ✓ | 2.703 | 0 | -50.472 | 0 | -132009.136 | -68763.995 | 69.947 | 189.066741 | |
| 164BL- 7 | 164BL- 8 ✓ | 135 1 28 | 228 5 23 ✓ | 10.010 ✓ | -6.686 | 0 | -7.449 | 0 | -132015.822 | -68771.444 | 12.026 | -80.405836 | |
| 164BL- 8 | K.618 ✓ | 134 55 17 | 183 0 40 ✓ | 87.128 ✓ | 87.008 | 0 | -4.577 | 0 | -132102.830 | -68776.021 | 0.000 | 0.000000 | |
| TOTAL.. | ソツカク入ウ= 5 | 540 0 0 | | 299.145 | 0.000 | 0 ✓ | -0.001 | 1 ✓ | | | ハ"イメンセキ= | 10783.340251 | |
| | | | | | | | | | | | 1/2= | 5391.67 | +0.00 |
| | | | | | | | | | | | メンセキ= | 5391.67 ✓ | |

セリ NO... 164BL(1)-2 ✓

| | | | | | | | | | | | | | |
|----------|------------|---------|------------|----------|---------|-----|--------|-----|-------------|------------|----------|-----------|-------|
| 164BL-26 | 164BL-28 ✓ | | 183 3 55 | | | | | | -132026.445 | -68667.061 | | | |
| 164BL-28 | 164BL-29 ✓ | 90 0 0 | 93 3 55 ✓ | 4.100 ✓ | -0.219 | 0 | 4.094 | 0 | -132026.664 | -68662.967 | 3.447 | -0.754893 | |
| 164BL-29 | 164BL-25 ✓ | 90 0 0 | 3 3 55 ✓ | 12.100 ✓ | 12.083 | 0 | 0.647 | 0 | -132014.581 | -68662.320 | 8.188 | 98.935604 | |
| 164BL-25 | 164BL-26 ✓ | 90 0 0 | 273 3 55 ✓ | 4.100 ✓ | 0.219 | 0 | -4.094 | 0 | -132014.362 | -68666.414 | 4.741 | 1.038279 | |
| 164BL-26 | 164BL-28 ✓ | 90 0 0 | 183 3 55 ✓ | 12.100 ✓ | -12.083 | 0 | -0.647 | 0 | -132026.445 | -68667.061 | 0.000 | 0.000000 | |
| TOTAL.. | ソツカク入ウ= 4 | 360 0 0 | | 32.400 | 0.000 | 0 ✓ | 0.000 | 0 ✓ | | | ハ"イメンセキ= | 99.218990 | |
| | | | | | | | | | | | 1/2= | 49.60 | +0.00 |
| | | | | | | | | | | | メンセキ= | 49.60 ✓ | |

*** メンセキ ケイサン (ハイイウキヨホウ) ***

チクメイ ... ミヤコタチク トチクカクセイリシキヨウ

セリ NO... 164BL(1)-3 ✓

| NO. | NO. | ANGLE | AZIMUTH | LENGTH | DX | * | DY | * | X | Y | DMD | 2A | カーブメンセキ |
|----------|------------|----------|------------|----------|---------|-----|---------|------|-------------|------------|-----------|-------------|---------|
| 164BL-27 | 164BL-21 ✓ | | 183 3 55 | | | | | | -132105.625 | -68718.546 | | | |
| 164BL-21 | 164BL-22 ✓ | 89 43 8 | 92 47 3 ✓ | 51.278 ✓ | -2.491 | 0 | 51.217 | 0 | -132108.116 | -68667.329 | 46.194 | -115.069254 | |
| 164BL-22 | 164BL-29 ✓ | 90 16 52 | 3 3 55 ✓ | 81.569 ✓ | 81.452 | 0 | 4.362 | 0 | -132026.664 | -68662.967 | 101.773 | 8289.614396 | |
| 164BL-29 | 164BL-28 ✓ | 90 0 0 | 273 3 55 ✓ | 4.100 ✓ | 0.219 | 0 | -4.094 | 0 | -132026.445 | -68667.061 | 102.041 | 22.346979 | |
| 164BL-28 | 164BL-26 ✓ | 270 0 0 | 3 3 55 ✓ | 12.100 ✓ | 12.083 | 0 | 0.647 | 0 | -132014.362 | -68666.414 | 98.594 | 1191.311302 | |
| 164BL-26 | 164BL-27 ✓ | 90 0 0 | 273 3 55 ✓ | 47.176 ✓ | 2.523 | 0 | -47.109 | 0 | -132011.839 | -68713.523 | 52.132 | 131.529036 | |
| 164BL-27 | 164BL-21 ✓ | 90 0 0 | 183 3 55 ✓ | 93.920 ✓ | -93.786 | 0 | -5.022 | -1 | -132105.625 | -68718.546 | 0.000 | 0.000000 | |
| TOTAL.. | ソツカク入= 6 | 720 0 0 | | 290.143 | 0.000 | 0 ✓ | 0.001 | -1 ✓ | | | ハイイウキヨホウ= | 9519.732459 | |
| | | | | | | | | | | | 1/2= | 4759.86 | +0.00 |
| | | | | | | | | | | | メンセキ= | 4759.86 ✓ | |

セリ NO... 164BL(2) ✓

| | | | | | | | | | | | | | |
|----------|------------|-----------|------------|-----------|---------|-----|----------|-----|-------------|------------|-----------|--------------|-------|
| 164BL-25 | 164BL-22 ✓ | | 183 3 55 | | | | | | -132108.116 | -68667.329 | | | |
| 164BL-22 | K.366 ✓ | 89 43 8 | 92 47 3 ✓ | 126.283 ✓ | -6.134 | 0 | 126.134 | 0 | -132114.250 | -68541.195 | 121.125 | -742.980750 | |
| | K.366 | 179 59 19 | 92 46 22 ✓ | 23.787 ✓ | -1.151 | 0 | 23.759 | 1 | -132115.401 | -68517.435 | 271.019 | -311.942869 | |
| 164BL-23 | 164BL-24 ✓ | 90 17 33 | 3 3 55 ✓ | 92.928 ✓ | 92.795 | 0 | 4.969 | 1 | -132022.606 | -68512.465 | 299.749 | 27815.208455 | |
| 164BL-24 | 164BL-25 ✓ | 90 0 0 | 273 3 55 ✓ | 150.070 ✓ | 8.025 | 0 | -149.855 | 0 | -132014.581 | -68662.320 | 154.864 | 1242.783600 | |
| 164BL-25 | 164BL-22 ✓ | 90 0 0 | 183 3 55 ✓ | 93.669 ✓ | -93.535 | 0 | -5.009 | 0 | -132108.116 | -68667.329 | 0.000 | 0.000000 | |
| TOTAL.. | ソツカク入= 5 | 540 0 0 | | 486.737 | 0.000 | 0 ✓ | -0.002 | 2 ✓ | | | ハイイウキヨホウ= | 28003.068436 | |
| | | | | | | | | | | | 1/2= | 14001.53 | +0.00 |
| | | | | | | | | | | | メンセキ= | 14001.53 ✓ | |

*** メンセキ ケイサン (ハ"イオウキヨホウ) ***

チクメイ ... ミヤコタ"チク トチクカクセイリシ"キ"ヨウ

セリ NO... (164BL(3))

| NO. | NO. | ANGLE | AZIMUTH | LENGTH | DX | * | DY | * | X | Y | DMD | 2A | カーブ"メンセキ |
|----------|-----------|-----------|-----------|---------|---------|---|----------|----|-------------|------------|----------|--------------|----------|
| 164BL-24 | 164BL-23 | | 183 3 55 | | | | | | -132115.401 | -68517.435 | | | |
| 164BL-23 | K.367 | 89 42 27 | 92 46 22 | 20.097 | -0.972 | 0 | 20.073 | 0 | -132116.373 | -68497.362 | 15.103 | -14.680116 | |
| | K.367 | 180 13 38 | 93 0 0 | 113.937 | -5.963 | 0 | 113.781 | 0 | -132122.336 | -68383.581 | 148.957 | -888.230591 | |
| | K.368 | 109 47 37 | 22 47 37 | 88.005 | 81.132 | 0 | 34.094 | 0 | -132041.204 | -68349.487 | 296.832 | 24082.573824 | |
| 164BL- 2 | 164BL- 3 | 178 51 50 | 21 39 27 | 1.997 | 1.856 | 0 | 0.737 | 0 | -132039.348 | -68348.750 | 331.663 | 615.566528 | |
| 164BL- 3 | 164BL- 4 | 176 58 35 | 18 38 2 | 2.003 | 1.898 | 0 | 0.640 | 0 | -132037.450 | -68348.110 | 333.040 | 632.109920 | |
| 164BL- 4 | 164BL- 5 | 175 3 55 | 13 41 57 | 2.268 | 2.203 | 0 | 0.537 | 0 | -132035.247 | -68347.573 | 334.217 | 736.280051 | |
| 164BL- 5 | 164BL- 6 | 128 17 36 | 321 59 33 | 5.047 | 3.977 | 0 | -3.108 | 0 | -132031.270 | -68350.681 | 331.646 | 1318.956142 | |
| 164BL- 6 | 164BL-24 | 131 4 22 | 273 3 55 | 162.016 | 8.664 | 0 | -161.784 | 0 | -132022.606 | -68512.465 | 166.754 | 1444.756656 | |
| 164BL-24 | 164BL-23 | 90 0 0 | 183 3 55 | 92.928 | -92.795 | 0 | -4.969 | -1 | -132115.401 | -68517.435 | 0.000 | 0.000000 | |
| TOTAL.. | ソツカクスク= 9 | 1260 | 0 0 | 488.298 | 0.000 | 0 | 0.001 | -1 | | | ハ"イメンセキ= | 27927.332414 | |
| | | | | | | | | | | | 1/2= | 13963.66 | +0.00 |
| | | | | | | | | | | | メンセキ= | 13963.66 | |

チクメイ ... ミヤコタチク トチクカクセイリシキヨウ

| NO. | NO. | ANGLE * | AZIMUTH | LENGTH | DX | * DY | * X | Y | NO. |
|----------|------------|---------|------------|-----------|---------|--------------|---------------|------------|----------|
| | K.618 ✓ | | | | | | -132102.830 | -68776.021 | K.618 |
| K.618 | 164BL-21 ✓ | | 92 47 3 ✓ | 57.543 ✓ | -2.795 | 0 57.475 | 0 -132105.625 | -68718.546 | 164BL-21 |
| 164BL-21 | 164BL-22 ✓ | 180 0 0 | 92 47 3 ✓ | 51.278 ✓ | -2.491 | 0 51.217 | 0 -132108.116 | -68667.329 | 164BL-22 |
| 164BL-22 | K.366 ✓ | 180 0 0 | 92 47 3 ✓ | 126.283 ✓ | -6.134 | 0 126.134 | 0 -132114.250 | -68541.195 | K.366 |
| | TOTAL.. | 360 0 0 | | 235.104 ✓ | -11.420 | 0 ✓ 234.826 | 0 ✓ | | |
| | K.366 ✓ | | | | | | -132114.250 | -68541.195 | K.366 |
| K.366 | 164BL-23 ✓ | | 92 46 22 ✓ | 23.787 ✓ | -1.151 | 0 23.759 | 1 -132115.401 | -68517.435 | 164BL-23 |
| 164BL-23 | K.367 ✓ | 180 0 0 | 92 46 22 ✓ | 20.097 ✓ | -0.972 | 0 20.073 | 0 -132116.373 | -68497.362 | K.367 |
| | TOTAL.. | 180 0 0 | | 43.884 ✓ | -2.123 | 0 ✓ 43.832 | 1 ✓ | | |
| | 164BL- 6 ✓ | | | | | | -132031.270 | -68350.681 | 164BL- 6 |
| 164BL- 6 | 164BL-24 ✓ | | 273 3 55 ✓ | 162.016 ✓ | 8.664 | 0 -161.784 | 0 -132022.606 | -68512.465 | 164BL-24 |
| 164BL-24 | 164BL-25 ✓ | 180 0 0 | 273 3 55 ✓ | 150.070 ✓ | 8.025 | 0 -149.855 | 0 -132014.581 | -68662.320 | 164BL-25 |
| 164BL-25 | 164BL-26 ✓ | 180 0 0 | 273 3 55 ✓ | 4.100 ✓ | 0.219 | 0 -4.094 | 0 -132014.362 | -68666.414 | 164BL-26 |
| 164BL-26 | 164BL-27 ✓ | 180 0 0 | 273 3 55 ✓ | 47.176 ✓ | 2.523 | 0 -47.109 | 0 -132011.839 | -68713.523 | 164BL-27 |
| 164BL-27 | 164BL- 7 ✓ | 180 0 0 | 273 3 55 ✓ | 50.544 ✓ | 2.703 | 0 -50.472 | 0 -132009.136 | -68763.995 | 164BL- 7 |
| | TOTAL.. | 720 0 0 | | 413.906 ✓ | 22.134 | 0 ✓ -413.314 | 0 ✓ | | |
| | 164BL-25 ✓ | | | | | | -132014.581 | -68662.320 | 164BL-25 |
| 164BL-25 | 164BL-29 ✓ | | 183 3 55 ✓ | 12.100 ✓ | -12.083 | 0 -0.647 | 0 -132026.664 | -68662.967 | 164BL-29 |
| 164BL-29 | 164BL-22 ✓ | 180 0 0 | 183 3 55 ✓ | 81.569 ✓ | -81.452 | 0 -4.362 | 0 -132108.116 | -68667.329 | 164BL-22 |
| | TOTAL.. | 180 0 0 | | 93.669 ✓ | -93.535 | 0 ✓ -5.009 | 0 ✓ | | |