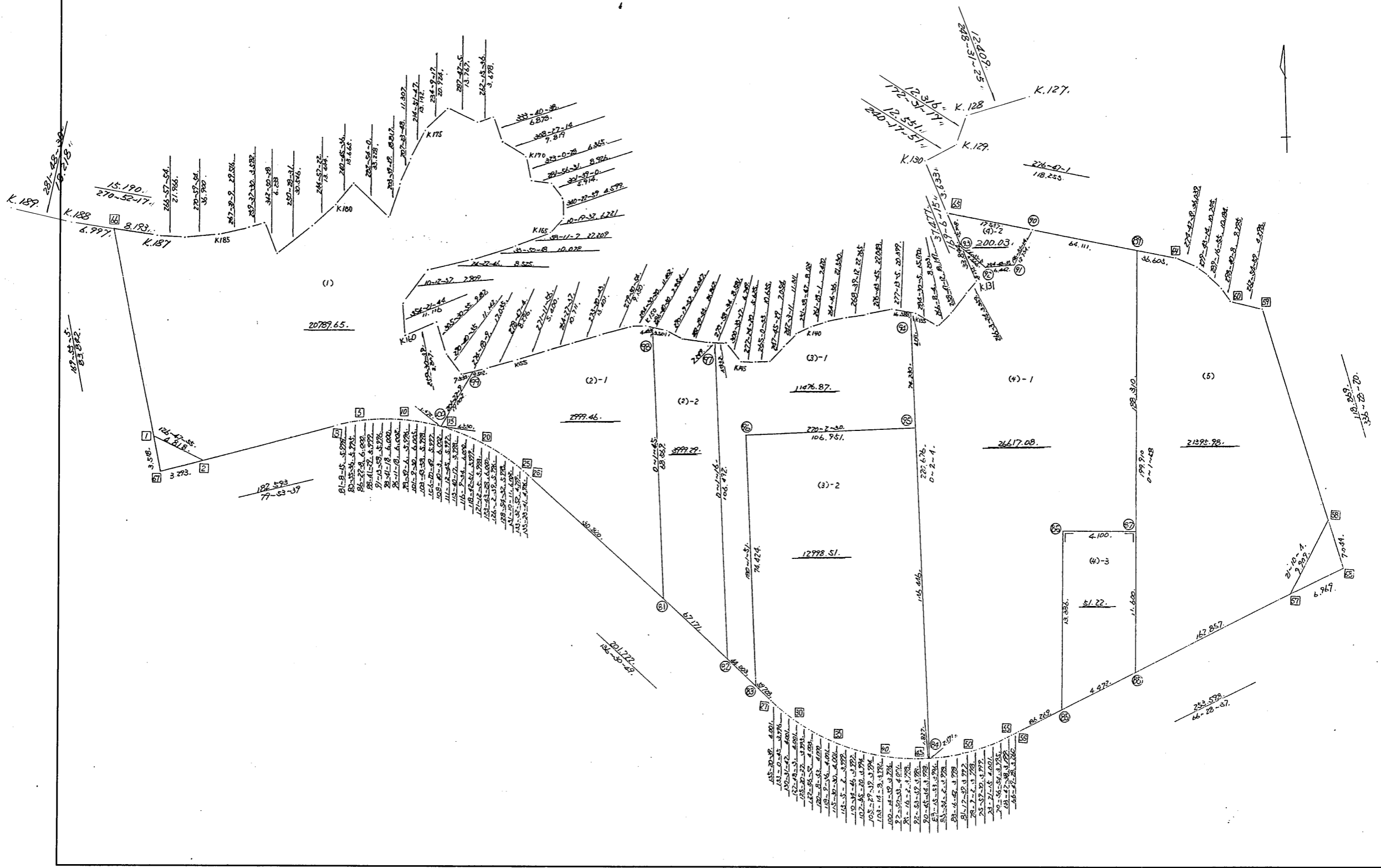


街廓原子一覽表用紙

(18° BL)

略

街区面積 = 100528.10 m²
 画地面積 = 100528.09'



街区点番号 1 ~ 66"
 K.131 ~ K.187"
 筆界点番号 81 ~ 100"
 画地番号 (1) ~ (5)"

不二測量株式会社

*** メンセキ ケイサン (ハイオウキヨホウ) ***

チクメイ ... ミヤコタチク トチクカクセイリシキヨウ

セイリ NO... 18BL ✓

NO.	NO.	ANGLE	AZIMUTH	LENGTH	DX	*	DY	*	X	Y	DMD	2A	カーブメンセキ
18BL-66	18BL- 1 ✓		169 55 5						-130766.518	-70602.258			
18BL- 1	18BL- 2 ✓	136 52 50	126 47 55 ✓	4.818 ✓	-2.886	0	3.858	0	-130769.404	-70598.400	18.535	-53.492010	
18BL- 2	18BL- 3 ✓	133 5 44	79 53 39 ✓	182.593 ✓	32.039	0	179.760	0	-130737.365	-70418.640	202.153	6476.779967	
18BL- 3	18BL- 4 ✓	181 14 36	81 8 15 ✓	5.998 ✓	0.924	0	5.926	0	-130736.441	-70412.714	387.839	358.363236	
18BL- 4	18BL- 5 ✓	182 27 21	83 35 36 ✓	5.995 ✓	0.669	0	5.958	0	-130735.772	-70406.756	399.723	267.414687	
18BL- 5	18BL- 6 ✓	182 46 32	86 22 8 ✓	6.000 ✓	0.380	0	5.988	0	-130735.392	-70400.768	411.669	156.434220	
18BL- 6	18BL- 7 ✓	182 19 21	88 41 29 ✓	5.999 ✓	0.137	0	5.997	0	-130735.255	-70394.771	423.654	58.040598	
18BL- 7	18BL- 8 ✓	182 32 29	91 13 58 ✓	5.996 ✓	-0.129	0	5.995	0	-130735.384	-70388.776	435.646	-56.198334	
18BL- 8	18BL- 9 ✓	182 27 20	93 41 18 ✓	6.000 ✓	-0.386	0	5.988	0	-130735.770	-70382.788	447.629	-172.784794	
18BL- 9	18BL-10 ✓	182 30 0	96 11 18 ✓	6.002 ✓	-0.647	0	5.967	0	-130736.417	-70376.821	459.584	-297.350848	
18BL-10	18BL-11 ✓	182 27 48	98 39 6 ✓	5.996 ✓	-0.902	0	5.928	0	-130737.319	-70370.893	471.479	-425.274058	
18BL-11	18BL-12 ✓	182 30 24	101 9 30 ✓	6.005 ✓	-1.162	0	5.891	0	-130738.481	-70365.002	483.298	-561.592276	
18BL-12	18BL-13 ✓	182 34 28	103 43 58 ✓	5.998 ✓	-1.424	0	5.827	0	-130739.905	-70359.175	495.016	-704.902784	
18BL-13	18BL-14 ✓	182 36 51	106 20 49 ✓	5.997 ✓	-1.688	0	5.755	0	-130741.593	-70353.420	506.598	-855.137424	
18BL-14	18BL-15 ✓	182 19 14	108 40 3 ✓	6.002 ✓	-1.921	0	5.686	0	-130743.514	-70347.734	518.039	-995.152919	
18BL-15	18BL-16 ✓	182 32 42	111 12 45 ✓	5.997 ✓	-2.170	0	5.591	0	-130745.684	-70342.143	529.316	-1148.615720	
18BL-16	18BL-17 ✓	182 27 32	113 40 17 ✓	5.998 ✓	-2.408	0	5.493	0	-130748.092	-70336.650	540.400	-1301.283200	
18BL-17	18BL-18 ✓	182 29 17	116 9 34 ✓	6.000 ✓	-2.645	0	5.385	0	-130750.737	-70331.265	551.278	-1458.130310	
18BL-18	18BL-19 ✓	182 33 17	118 42 51 ✓	5.999 ✓	-2.882	0	5.261	0	-130753.619	-70326.004	561.924	-1619.464968	
18BL-19	18BL-20 ✓	182 29 14	121 12 5 ✓	5.998 ✓	-3.107	0	5.130	0	-130756.726	-70320.874	572.315	-1778.182705	
18BL-20	18BL-21 ✓	182 31 23	123 43 28 ✓	6.000 ✓	-3.331	0	4.990	0	-130760.057	-70315.884	582.435	-1940.090985	
18BL-21	18BL-22 ✓	182 19 11	126 2 39 ✓	5.996 ✓	-3.528	0	4.848	0	-130763.585	-70311.036	592.273	-2089.539144	
18BL-22	18BL-23 ✓	182 51 53	128 54 32 ✓	5.998 ✓	-3.767	0	4.667	0	-130767.352	-70306.369	601.788	-2266.935396	
18BL-23	18BL-24 ✓	182 15 39	131 10 11 ✓	6.002 ✓	-3.951	0	4.518	0	-130771.303	-70301.851	610.973	-2413.954323	

*** メンセキ ケイサン (ハ"イオウキヨホウ) ***

チクメイ ... ミヤコタ"チク トチクカクセイリシ"キ"ヨウ

セイリ NO... 18BL ✓

NO.	NO.	ANGLE	AZIMUTH	LENGTH	DX	*	DY	*	X	Y	DMD	2A	カーブ"メンセキ
18BL-24	18BL-25 ✓	182 22 41	133 32 52 ✓	4.799 ✓	-3.306	0	3.478	0	-130774.609	-70298.373	618.969	-2046.311514	
18BL-25	18BL-26 ✓	181 50 49	135 23 41 ✓	4.926 ✓	-3.507	0	3.459	0	-130778.116	-70294.914	625.906	-2195.052342	
18BL-26	18BL-27 ✓	181 7 8	136 30 49 ✓	201.722 ✓	-146.357	0	138.821	1	-130924.473	-70156.092	768.187	-112429.544759	
18BL-27	18BL-28 ✓	178 49 50	135 20 39 ✓	4.001 ✓	-2.846	0	2.812	0	-130927.319	-70153.280	909.821	-2589.350566	
18BL-28	18BL-29 ✓	177 40 6	133 0 45 ✓	3.996 ✓	-2.726	0	2.922	0	-130930.045	-70150.358	915.555	-2495.802930	
18BL-29	18BL-30 ✓	177 31 2	130 31 47 ✓	4.001 ✓	-2.600	0	3.041	0	-130932.645	-70147.317	921.518	-2395.946800	
18BL-30	18BL-31 ✓	177 16 16	127 48 3 ✓	4.001 ✓	-2.452	0	3.161	0	-130935.097	-70144.156	927.720	-2274.769440	
18BL-31	18BL-32 ✓	177 32 24	125 20 27 ✓	3.995 ✓	-2.311	0	3.259	0	-130937.408	-70140.897	934.140	-2158.797540	
18BL-32	18BL-33 ✓	177 36 25	122 56 52 ✓	4.003 ✓	-2.177	0	3.359	0	-130939.585	-70137.538	940.758	-2048.030166	
18BL-33	18BL-34 ✓	177 12 1	120 8 53 ✓	4.000 ✓	-2.009	0	3.459	0	-130941.594	-70134.079	947.576	-1903.680184	
18BL-34	18BL-35 ✓	178 0 43	118 9 36 ✓	4.001 ✓	-1.888	0	3.527	0	-130943.482	-70130.552	954.562	-1802.213056	
18BL-35	18BL-36 ✓	177 20 54	115 30 30 ✓	4.001 ✓	-1.723	0	3.611	0	-130945.205	-70126.941	961.700	-1657.009100	
18BL-36	18BL-37 ✓	177 34 32	113 5 2 ✓	3.999 ✓	-1.568	0	3.679	0	-130946.773	-70123.262	968.990	-1519.376320	
18BL-37	18BL-38 ✓	177 29 44	110 34 46 ✓	3.997 ✓	-1.405	0	3.742	0	-130948.178	-70119.520	976.411	-1371.857455	
18BL-38	18BL-39 ✓	177 20 34	107 55 20 ✓	3.994 ✓	-1.229	0	3.800	0	-130949.407	-70115.720	983.953	-1209.278237	
18BL-39	18BL-40 ✓	177 34 19	105 29 39 ✓	3.994 ✓	-1.067	0	3.849	0	-130950.474	-70111.871	991.602	-1058.039334	
18BL-40	18BL-41 ✓	177 44 29	103 14 8 ✓	3.992 ✓	-0.914	0	3.886	0	-130951.388	-70107.985	999.337	-913.394018	
18BL-41	18BL-42 ✓	177 0 51	100 14 59 ✓	3.996 ✓	-0.711	0	3.932	0	-130952.099	-70104.053	1007.155	-716.087205	
18BL-42	18BL-43 ✓	177 35 34	97 50 33 ✓	4.001 ✓	-0.546	0	3.964	0	-130952.645	-70100.089	1015.051	-554.217846	
18BL-43	18BL-44 ✓	177 25 29	95 16 2 ✓	3.998 ✓	-0.367	0	3.981	0	-130953.012	-70096.108	1022.996	-375.439532	
18BL-44	18BL-45 ✓	177 37 57	92 53 59 ✓	3.993 ✓	-0.202	0	3.988	0	-130953.214	-70092.120	1030.965	-208.254930	
18BL-45	18BL-46 ✓	177 51 35	90 45 34 ✓	3.998 ✓	-0.053	0	3.998	0	-130953.267	-70088.122	1038.951	-55.064403	
18BL-46	18BL-47 ✓	177 30 19	88 15 53 ✓	3.996 ✓	0.121	0	3.994	0	-130953.146	-70084.128	1046.943	126.680103	
18BL-47	18BL-48 ✓	177 18 9	85 34 2 ✓	3.998 ✓	0.309	0	3.986	0	-130952.837	-70080.142	1054.923	325.971207	

*** メンセキ ケイサン (ハ"イオウキヨホウ) ***

チクメイ ... ミヤコタ"チク トチクカクセイリシ"キ"ヨウ

レイリ NO... 18BL ✓

NO.	NO.	ANGLE	AZIMUTH	LENGTH	DX	*	DY	*	X	Y	DMD	2A	カーブ"メンセキ
18BL-48	18BL-49 ✓	177 42 40	83 16 42 ✓	3.998 ✓	0.468	0	3.971	0	-130952.369	-70076.171	1062.880	497.427840	
18BL-49	18BL-50 ✓	178 0 57	81 17 39 ✓	3.997 ✓	0.605	0	3.951	0	-130951.764	-70072.220	1070.802	647.835210	
18BL-50	18BL-51 ✓	176 51 23	78 9 2 ✓	3.998 ✓	0.821	0	3.913	0	-130950.943	-70068.307	1078.666	885.584786	
18BL-51	18BL-52 ✓	177 50 28	75 59 30 ✓	3.999 ✓	0.968	0	3.880	0	-130949.975	-70064.427	1086.459	1051.692312	
18BL-52	18BL-53 ✓	177 21 45	73 21 15 ✓	4.001 ✓	1.146	0	3.833	0	-130948.829	-70060.594	1094.172	1253.921112	
18BL-53	18BL-54 ✓	177 35 39	70 56 54 ✓	3.995 ✓	1.304	0	3.776	0	-130947.525	-70056.818	1101.781	1436.722424	
18BL-54	18BL-55 ✓	177 50 44	68 47 38 ✓	3.199 ✓	1.157	0	2.982	0	-130946.368	-70053.836	1108.539	1282.579623	
18BL-55	18BL-56 ✓	178 1 50	66 49 28 ✓	3.260 ✓	1.283	0	2.997	0	-130945.085	-70050.839	1114.518	1429.926594	
18BL-56	18BL-57 ✓	179 39 9	66 28 37 ✓	253.598 ✓	101.216	-1	232.524	0	-130843.870	-69818.315	1350.039	136644.197385	
18BL-57	18BL-58 ✓	134 41 27	21 10 4 ✓	9.909 ✓	9.240	0	3.578	0	-130834.630	-69814.737	1586.141	14655.942840	
18BL-58	18BL-59 ✓	135 18 16	336 28 20 ✓	118.869 ✓	108.987	0	-47.452	0	-130725.643	-69862.189	1542.267	168087.053529	
18BL-59	18BL-60 ✓	106 26 39	262 54 59 ✓	4.298 ✓	-0.530	0	-4.265	0	-130726.173	-69866.454	1490.550	-789.991500	
18BL-60	18BL-61 ✓	215 45 9	298 40 8 ✓	9.795 ✓	4.699	0	-8.594	0	-130721.474	-69875.048	1477.691	6943.670009	
18BL-61	18BL-62 ✓	170 36 47	289 16 55 ✓	10.184 ✓	3.363	0	-9.613	0	-130718.111	-69884.661	1459.484	4908.244692	
18BL-62	18BL-63 ✓	170 26 19	279 43 14 ✓	10.755 ✓	1.816	0	-10.601	0	-130716.295	-69895.262	1439.270	2613.714320	
18BL-63	18BL-64 ✓	175 4 25	274 47 39 ✓	36.039 ✓	3.012	0	-35.913	0	-130713.283	-69931.175	1392.756	4194.981072	
18BL-64	18BL-65 ✓	181 59 22	276 47 1 ✓	118.253 ✓	13.968	0	-117.425	0	-130699.315	-70048.600	1239.418	17312.190624	
18BL-65	K.131 ✓	72 19 14	169 6 15 ✓	33.844 ✓	-33.234	0	6.397	0	-130732.549	-70042.203	1128.390	-37500.913260	
K.131	K.132 ✓	276 57 9	266 3 24 ✓	3.359 ✓	-0.231	0	-3.351	0	-130732.780	-70045.554	1131.436	-261.361716	
K.132	K.133 ✓	172 45 48	258 49 12 ✓	18.149 ✓	-3.519	0	-17.805	0	-130736.299	-70063.359	1110.280	-3907.075320	
K.133	K.134 ✓	187 18 52	266 8 4 ✓	8.203 ✓	-0.553	0	-8.184	0	-130736.852	-70071.543	1084.291	-599.612923	
K.134	K.135 ✓	198 22 1	284 30 5 ✓	15.120 ✓	3.786	0	-14.638	0	-130733.066	-70086.181	1061.469	4018.721634	
K.135	K.136 ✓	172 43 0	277 13 5 ✓	20.399 ✓	2.563	0	-20.237	0	-130730.503	-70106.418	1026.594	2631.160422	
K.136	K.137 ✓	169 30 40	266 43 45 ✓	22.048 ✓	-1.258	0	-22.012	0	-130731.761	-70128.430	984.345	-1238.306010	

*** メンセキ ケイサン (ハイイウキヨホウ) ***

チクメイ ... ミヤコタチク トチクカクセイリシキヨウ

レイリ NO... 18BL ✓

NO.	NO.	ANGLE	AZIMUTH	LENGTH	DX	*	DY	*	X	Y	DMD	2A	カーブメンセキ
K.137	K.138 ✓	181 55 27	268 39 12 ✓	22.765 ✓	-0.535	0	-22.759	0	-130732.296	-70151.189	939.574	-502.672090	
K.138	K.139 ✓	175 37 44	264 16 56 ✓	21.550 ✓	-2.147	0	-21.443	0	-130734.443	-70172.632	895.372	-1922.363684	
K.139	K.140 ✓	177 11 5	261 28 1 ✓	7.420 ✓	-1.101	0	-7.338	0	-130735.544	-70179.970	866.591	-954.116691	
K.140	K.141 ✓	170 10 46	251 38 47 ✓	8.022 ✓	-2.526	0	-7.614	0	-130738.070	-70187.584	851.639	-2151.240114	
K.141	K.142 ✓	170 24 24	242 3 11 ✓	11.311 ✓	-5.301	0	-9.992	0	-130743.371	-70197.576	834.033	-4421.208933	
K.142	K.143 ✓	185 42 18	247 45 29 ✓	7.054 ✓	-2.670	0	-6.529	0	-130746.041	-70204.105	817.512	-2182.757040	
K.143	K.144 ✓	197 15 4	265 0 33 ✓	10.655 ✓	-0.927	0	-10.615	0	-130746.968	-70214.720	800.368	-741.941136	
K.144	K.145 ✓	192 23 47	277 24 20 ✓	5.625 ✓	0.725	0	-5.578	0	-130746.243	-70220.298	784.175	568.526875	
K.145	K.146 ✓	203 8 57	300 33 17 ✓	6.749 ✓	3.431	0	-5.812	0	-130742.812	-70226.110	772.785	2651.425335	
K.146	K.147 ✓	153 25 17	273 58 34 ✓	8.581 ✓	0.595	0	-8.560	0	-130742.217	-70234.670	758.413	451.255735	
K.147	K.148 ✓	188 31 19	282 29 53 ✓	26.862 ✓	5.813	0	-26.225	0	-130736.404	-70260.895	723.628	4206.449564	
K.148	K.149 ✓	187 50 4	290 19 57 ✓	10.047 ✓	3.491	0	-9.421	0	-130732.913	-70270.316	687.982	2401.745162	
K.149	K.150 ✓	176 20 53	286 40 50 ✓	7.954 ✓	2.283	0	-7.619	0	-130730.630	-70277.935	670.942	1531.760586	
K.150	K.151 ✓	177 49 30	284 30 20 ✓	11.402 ✓	2.856	0	-11.039	0	-130727.774	-70288.974	652.284	1862.923104	
K.151	K.152 ✓	175 20 34	279 50 54 ✓	9.150 ✓	1.565	0	-9.015	0	-130726.209	-70297.989	632.230	989.439950	
K.152	K.153 ✓	173 29 49	273 20 43 ✓	13.401 ✓	0.782	0	-13.378	0	-130725.427	-70311.367	609.837	476.892534	
K.153	K.154 ✓	171 6 54	264 27 37 ✓	10.711 ✓	-1.034	0	-10.661	0	-130726.461	-70322.028	585.798	-605.715132	
K.154	K.155 ✓	186 44 19	271 11 56 ✓	5.400 ✓	0.113	0	-5.399	0	-130726.348	-70327.427	569.738	64.380394	
K.155	K.156 ✓	187 35 8	278 47 4 ✓	8.296 ✓	1.267	0	-8.199	0	-130725.081	-70335.626	556.140	704.629380	
K.156	K.157 ✓	175 31 5	274 18 9 ✓	17.035 ✓	1.278	0	-16.987	0	-130723.803	-70352.613	530.954	678.559212	
K.157	K.158 ✓	196 22 26	290 40 35 ✓	11.142 ✓	3.934	0	-10.424	0	-130719.869	-70363.037	503.543	1980.938162	
K.158	K.159 ✓	194 50 20	305 30 55 ✓	9.187 ✓	5.337	0	-7.478	0	-130714.532	-70370.515	485.641	2591.866017	
K.159	K.160 ✓	133 59 44	259 30 39 ✓	2.807 ✓	-0.511	0	-2.760	0	-130715.043	-70373.275	475.403	-242.930933	
K.160	K.161 ✓	274 51 5	354 21 44 ✓	11.116 ✓	11.062	0	-1.092	0	-130703.981	-70374.367	471.551	5216.297162	

*** メンセキ ケイサン (ハ"イオウキヨホウ) ***

チクメイ ... ミヤコタ"チク トチクカクセイリシ"キ"ヨウ

セイリ NO... 18BL ✓

NO.	NO.	ANGLE	AZIMUTH	LENGTH	DX	*	DY	*	X	Y	DMD	2A	カーブ"メンセキ
K.161	K.162 ✓	195 50 53	10 12 37 ✓	7.909 ✓	7.784	0	1.402	0	-130696.197	-70372.965	471.861	3672.966024	
K.162	K.163 ✓	194 10 9	24 22 46 ✓	8.525 ✓	7.765	0	3.519	0	-130688.432	-70369.446	476.782	3702.212230	
K.163	K.164 ✓	189 27 32	33 50 18 ✓	10.078 ✓	8.371	0	5.612	0	-130680.061	-70363.834	485.913	4067.577723	
K.164	K.165 ✓	184 20 49	38 11 7 ✓	27.209 ✓	21.387	0	16.821	0	-130658.674	-70347.013	508.346	10871.995902	
K.165	K.166 ✓	152 8 25	10 19 32 ✓	6.221 ✓	6.120	0	1.115	0	-130652.554	-70345.898	526.282	3220.845840	
K.166	K.167 ✓	150 3 27	340 22 59 ✓	4.599 ✓	4.332	0	-1.544	0	-130648.222	-70347.442	525.853	2277.995196	
K.167	K.168 ✓	141 16 1	301 39 0 ✓	5.914 ✓	3.103	0	-5.034	0	-130645.119	-70352.476	519.275	1611.310325	
K.168	K.169 ✓	160 17 31	281 56 31 ✓	8.926 ✓	1.847	0	-8.733	0	-130643.272	-70361.209	505.508	933.673276	
K.169	K.170 ✓	221 3 57	323 0 28 ✓	6.365 ✓	5.084	0	-3.830	0	-130638.188	-70365.039	492.945	2506.132380	
K.170	K.171 ✓	165 26 46	308 27 14 ✓	9.819 ✓	6.106	0	-7.689	0	-130632.082	-70372.728	481.426	2939.587156	
K.171	K.172 ✓	205 13 24	333 40 38 ✓	6.878 ✓	6.165	0	-3.050	0	-130625.917	-70375.778	470.687	2901.785355	
K.172	K.173 ✓	108 34 58	262 15 36 ✓	3.698 ✓	-0.498	0	-3.664	0	-130626.415	-70379.442	463.973	-231.058554	
K.173	K.174 ✓	205 31 29	287 47 5 ✓	13.767 ✓	4.205	0	-13.109	0	-130622.210	-70392.551	447.200	1880.476000	
K.174	K.175 ✓	126 22 12	234 9 17 ✓	20.924 ✓	-12.253	0	-16.961	0	-130634.463	-70409.512	417.130	-5111.093890	
K.175	K.176 ✓	160 42 30	214 51 47 ✓	13.142 ✓	-10.783	0	-7.512	0	-130645.246	-70417.024	392.657	-4234.020431	
K.176	K.177 ✓	172 32 1	207 23 48 ✓	11.307 ✓	-10.039	0	-5.203	0	-130655.285	-70422.227	379.942	-3814.237738	
K.177	K.178 ✓	176 15 41	203 39 29 ✓	18.817 ✓	-17.236	0	-7.551	0	-130672.521	-70429.778	367.188	-6328.852368	
K.178	K.179 ✓	259 14 31	282 54 0 ✓	33.228 ✓	7.418	0	-32.389	0	-130665.103	-70462.167	327.248	2427.525664	
K.179	K.180 ✓	137 51 36	240 45 36 ✓	13.665 ✓	-6.675	0	-11.924	0	-130671.778	-70474.091	282.935	-1888.591125	
K.180	K.181 ✓	184 11 46	244 57 22 ✓	13.444 ✓	-5.691	0	-12.180	0	-130677.469	-70486.271	258.831	-1473.007221	
K.181	K.182 ✓	185 31 9	250 28 31 ✓	30.546 ✓	-10.209	0	-28.790	0	-130687.678	-70515.061	217.861	-2224.142949	
K.182	K.183 ✓	272 21 57	342 50 28 ✓	6.233 ✓	5.956	0	-1.839	0	-130681.722	-70516.900	187.232	1115.153792	
K.183	K.184 ✓	96 47 2	259 37 30 ✓	3.582 ✓	-0.645	0	-3.523	0	-130682.367	-70520.423	181.870	-117.306150	
K.184	K.185 ✓	188 1 39	267 39 9 ✓	29.516 ✓	-1.209	0	-29.491	0	-130683.576	-70549.914	148.856	-179.966904	

*** メンセキ ケイサン (ハ"イオウキヨホウ) ***

チクメイ ... ミヤコタ"チク トチクカクセイリシ"キ"ヨウ

セイリ NO... 18BL ✓

NO.	NO.	ANGLE	AZIMUTH	LENGTH	DX	*	DY	*	X	Y	DMD	2A	カ-フ"メンセキ
K.185	K.186 ✓	183 20 45	270 59 54 ✓	36.900 ✓	0.643	0	-36.894	0	-130682.933	-70586.808	82.471	53.028853	
K.186	K.187 ✓	175 58 0	266 57 54 ✓	21.966 ✓	-1.163	0	-21.935	0	-130684.096	-70608.743	23.642	-27.495646	
K.187	18BL-66 ✓	183 54 23	270 52 17 ✓	8.193 ✓	0.125	0	-8.192	0	-130683.971	-70616.935	-6.485	-0.810625	
18BL-66	18BL- 1 ✓	79 2 48	169 55 5 ✓	83.842 ✓	-82.547	0	14.677	0	-130766.518	-70602.258	0.000	0.000000	
TOTAL..	ソツカクスク=123	21780	0 0	2061.513	0.001	-1 ✓	-0.001	1 ✓			ハ"イメンセキ=	201056.215376	
											1/2=	100528.10	+0.00
											メンセキ=	100528.10 ✓	

*** メンセキ ケイサン (ハイオウキヨホウ) ***

チクメイ ... ミヤコタチク トチクカクセイリシキヨウ

セイリ NO... 18BL(1)✓

NO.	NO.	ANGLE	AZIMUTH	LENGTH	DX	*	DY	*	X	Y	DMD	2A	カ-フ"メンセキ
18BL-66	18BL- 1✓		169 55 5						-130766.518	-70602.258			
18BL- 1	18BL- 2✓	136 52 50	126 47 55✓	4.818✓	-2.886	0	3.858	0	-130769.404	-70598.400	18.535	-53.492010	
18BL- 2	18BL- 3✓	133 5 44	79 53 39✓	182.593✓	32.039	0	179.760	0	-130737.365	-70418.640	202.153	6476.779967	
18BL- 3	18BL- 4✓	181 14 36	81 8 15✓	5.998✓	0.924	0	5.926	0	-130736.441	-70412.714	387.839	358.363236	
18BL- 4	18BL- 5✓	182 27 21	83 35 36✓	5.995✓	0.669	0	5.958	0	-130735.772	-70406.756	399.723	267.414687	
18BL- 5	18BL- 6✓	182 46 32	86 22 8✓	6.000✓	0.380	0	5.988	0	-130735.392	-70400.768	411.669	156.434220	
18BL- 6	18BL- 7✓	182 19 21	88 41 29✓	5.999✓	0.137	0	5.997	0	-130735.255	-70394.771	423.654	58.040598	
18BL- 7	18BL- 8✓	182 32 29	91 13 58✓	5.996✓	-0.129	0	5.995	0	-130735.384	-70388.776	435.646	-56.198334	
18BL- 8	18BL- 9✓	182 27 20	93 41 18✓	6.000✓	-0.386	0	5.988	0	-130735.770	-70382.788	447.629	-172.784794	
18BL- 9	18BL-10✓	182 30 0	96 11 18✓	6.002✓	-0.647	0	5.967	0	-130736.417	-70376.821	459.584	-297.350848	
18BL-10	18BL-11✓	182 27 48	98 39 6✓	5.996✓	-0.902	0	5.928	0	-130737.319	-70370.893	471.479	-425.274058	
18BL-11	18BL-12✓	182 30 24	101 9 30✓	6.005✓	-1.162	0	5.891	0	-130738.481	-70365.002	483.298	-561.592276	
18BL-12	18BL-13✓	182 34 28	103 43 58✓	5.998✓	-1.424	0	5.827	0	-130739.905	-70359.175	495.016	-704.902784	
18BL-13	18BL-14✓	182 36 51	106 20 49✓	5.997✓	-1.688	0	5.755	0	-130741.593	-70353.420	506.598	-855.137424	
18BL-14	18BL-100✓	182 19 14	108 40 3✓	1.472✓	-0.471	0	1.395	0	-130742.064	-70352.025	513.748	-241.975308	
18BL-100	18BL-99✓	92 42 6	21 22 9✓	19.002✓	17.696	0	6.924	0	-130724.368	-70345.101	522.067	9238.497632	
18BL-99	K.157✓	72 56 0	274 18 9✓	7.533✓	0.565	0	-7.512	0	-130723.803	-70352.613	521.479	294.635635	
K.157	K.158✓	196 22 26	290 40 35✓	11.142✓	3.934	0	-10.424	0	-130719.869	-70363.037	503.543	1980.938162	
K.158	K.159✓	194 50 20	305 30 55✓	9.187✓	5.337	0	-7.478	0	-130714.532	-70370.515	485.641	2591.866017	
K.159	K.160✓	133 59 44	259 30 39✓	2.807✓	-0.511	0	-2.760	0	-130715.043	-70373.275	475.403	-242.930933	
K.160	K.161✓	274 51 5	354 21 44✓	11.116✓	11.062	0	-1.092	0	-130703.981	-70374.367	471.551	5216.297162	
K.161	K.162✓	195 50 53	10 12 37✓	7.909✓	7.784	0	1.402	0	-130696.197	-70372.965	471.861	3672.966024	
K.162	K.163✓	194 10 9	24 22 46✓	8.525✓	7.765	0	3.519	0	-130688.432	-70369.446	476.782	3702.212230	
K.163	K.164✓	189 27 32	33 50 18✓	10.078✓	8.371	0	5.612	0	-130680.061	-70363.834	485.913	4067.577723	

*** メンセキ ケイサン (ハ"イオウキヨホウ) ***

チクメイ ... ミヤコタ"チク トチクカクセイリシ"キ"ヨウ

セリリ NO... 18BL(1)✓

NO.	NO.	ANGLE	AZIMUTH	LENGTH	DX	*	DY	*	X	Y	DMD	2A	カーブ"メンセキ
K.164	K.165✓	184 20 49	38 11 7 ✓	27.209 ✓	21.387	0	16.821	0	-130658.674	-70347.013	508.346	10871.995902	
K.165	K.166✓	152 8 25	10 19 32 ✓	6.221 ✓	6.120	0	1.115	0	-130652.554	-70345.898	526.282	3220.845840	
K.166	K.167✓	150 3 27	340 22 59 ✓	4.599 ✓	4.332	0	-1.544	0	-130648.222	-70347.442	525.853	2277.995196	
K.167	K.168✓	141 16 1	301 39 0 ✓	5.914 ✓	3.103	0	-5.034	0	-130645.119	-70352.476	519.275	1611.310325	
K.168	K.169✓	160 17 31	281 56 31 ✓	8.926 ✓	1.847	0	-8.733	0	-130643.272	-70361.209	505.508	933.673276	
K.169	K.170✓	221 3 57	323 0 28 ✓	6.365 ✓	5.084	0	-3.830	0	-130638.188	-70365.039	492.945	2506.132380	
K.170	K.171✓	165 26 46	308 27 14 ✓	9.819 ✓	6.106	0	-7.689	0	-130632.082	-70372.728	481.426	2939.587156	
K.171	K.172✓	205 13 24	333 40 38 ✓	6.878 ✓	6.165	0	-3.050	0	-130625.917	-70375.778	470.687	2901.785355	
K.172	K.173✓	108 34 58	262 15 36 ✓	3.698 ✓	-0.498	0	-3.664	0	-130626.415	-70379.442	463.973	-231.058554	
K.173	K.174✓	205 31 29	287 47 5 ✓	13.767 ✓	4.205	0	-13.109	0	-130622.210	-70392.551	447.200	1880.476000	
K.174	K.175✓	126 22 12	234 9 17 ✓	20.924 ✓	-12.253	0	-16.961	0	-130634.463	-70409.512	417.130	-5111.093890	
K.175	K.176✓	160 42 30	214 51 47 ✓	13.142 ✓	-10.783	0	-7.512	0	-130645.246	-70417.024	392.657	-4234.020431	
K.176	K.177✓	172 32 1	207 23 48 ✓	11.307 ✓	-10.039	0	-5.203	0	-130655.285	-70422.227	379.942	-3814.237738	
K.177	K.178✓	176 15 41	203 39 29 ✓	18.817 ✓	-17.236	0	-7.551	0	-130672.521	-70429.778	367.188	-6328.852368	
K.178	K.179✓	259 14 31	282 54 0 ✓	33.228 ✓	7.418	0	-32.389	0	-130665.103	-70462.167	327.248	2427.525664	
K.179	K.180✓	137 51 36	240 45 36 ✓	13.665 ✓	-6.675	0	-11.924	0	-130671.778	-70474.091	282.935	-1888.591125	
K.180	K.181✓	184 11 46	244 57 22 ✓	13.444 ✓	-5.691	0	-12.180	0	-130677.469	-70486.271	258.831	-1473.007221	
K.181	K.182✓	185 31 9	250 28 31 ✓	30.546 ✓	-10.209	0	-28.790	0	-130687.678	-70515.061	217.861	-2224.142949	
K.182	K.183✓	272 21 57	342 50 28 ✓	6.233 ✓	5.956	0	-1.839	0	-130681.722	-70516.900	187.232	1115.153792	
K.183	K.184✓	96 47 2	259 37 30 ✓	3.582 ✓	-0.645	0	-3.523	0	-130682.367	-70520.423	181.870	-117.306150	
K.184	K.185✓	188 1 39	267 39 9 ✓	29.516 ✓	-1.209	0	-29.491	0	-130683.576	-70549.914	148.856	-179.966904	
K.185	K.186✓	183 20 45	270 59 54 ✓	36.900 ✓	0.643	0	-36.894	0	-130682.933	-70536.808	82.471	53.028853	
K.186	K.187✓	175 58 0	266 57 54 ✓	21.966 ✓	-1.163	0	-21.935	0	-130684.096	-70608.743	23.642	-27.495646	
K.187	18BL-66 ✓	183 54 23	270 52 17 ✓	8.193 ✓	0.125	0	-8.192	0	-130683.971	-70616.935	-6.485	-0.810625	

*** メンセキ ケイザン (ハ"イオウキヨホウ) ***

チクメイ ... ミヤコタ"チク トチクカクセイリシ"キ"ヨウ

セイリ NO... 18BLK(1) ✓

NO.	NO.	ANGLE	AZIMUTH	LENGTH	DX	*	DY	*	X	Y	DMD	2A	カーブ"メンセキ
18BL-66	18BL- 1 ✓	79 2 48	169 55 5 ✓	83.842 ✓	-82.547	0	14.677	0	-130766.518	-70602.258	0.000	0.000000	
TOTAL..	ソツカク入ウ= 48	8280 0 0		780.869	0.000	0 ✓	0.000	0 ✓					
											ハ"イメンセキ=	41579.310662	
											1/2=	20789.65	+0.00
											メンセキ=	20789.65 ✓	

*** メンセキ ケイサン (ハイオウキヨホウ) ***

子クメイ ... ミヤコタチク トチクカクセイリシキヨウ

セイリ NO... 18BL(2)-1

NO.	NO.	ANGLE	AZIMUTH	LENGTH	DX	*	DY	*	X	Y	DMD	2A	カ-フメンセキ	
18BL-99	18BL-100		201 22 9						-130742.064	-70352.025				
18BL-100	18BL-15	87 17 54	108 40 3	4.530	-1.450	0	4.292	-1	-130743.514	-70347.734	-2.633	3.817850		
18BL-15	18BL-16	182 32 42	111 12 45	5.997	-2.170	0	5.591	0	-130745.684	-70342.143	7.249	-15.730330		
18BL-16	18BL-17	182 27 32	113 40 17	5.998	-2.408	0	5.493	0	-130748.092	-70336.650	18.333	-44.145864		
18BL-17	18BL-18	182 29 17	116 9 34	6.000	-2.645	0	5.385	0	-130750.737	-70331.265	29.211	-77.263095		
18BL-18	18BL-19	182 33 17	118 42 51	5.999	-2.882	0	5.261	0	-130753.619	-70326.004	39.857	-114.867874		
18BL-19	18BL-20	182 29 14	121 12 5	5.998	-3.107	0	5.130	0	-130756.726	-70320.874	50.248	-156.120536		
18BL-20	18BL-21	182 31 23	123 43 28	6.000	-3.331	0	4.990	0	-130760.057	-70315.884	60.368	-201.085808		
18BL-21	18BL-22	182 19 11	126 2 39	5.996	-3.528	0	4.848	0	-130763.585	-70311.036	70.206	-247.686768		
18BL-22	18BL-23	182 51 53	128 54 32	5.998	-3.767	0	4.667	0	-130767.352	-70306.369	79.721	-300.309007		
18BL-23	18BL-24	182 15 39	131 10 11	6.002	-3.951	0	4.518	0	-130771.303	-70301.851	88.906	-351.267606		
18BL-24	18BL-25	182 22 41	133 32 52	4.799	-3.306	0	3.478	0	-130774.609	-70298.373	96.902	-320.358012		
18BL-25	18BL-26	181 50 49	135 23 41	4.926	-3.507	0	3.459	0	-130778.116	-70294.914	103.839	-364.163373		
18BL-26	18BL-81	181 7 8	136 30 49	30.820	-22.361	0	21.210	0	-130800.477	-70273.704	128.508	-2873.567388		
18BL-81	18BL-98	43 30 56	0 1 45	68.569	68.569	0	0.035	0	-130731.908	-70273.669	149.753	10268.413457		
18BL-98	K.150	106 39 5	286 40 50	4.453	1.278	0	-4.266	0	-130730.630	-70277.935	145.522	185.977116		
K.150	K.151	177 49 30	284 30 20	11.402	2.856	0	-11.039	0	-130727.774	-70288.974	130.217	371.899752		
K.151	K.152	175 20 34	279 50 54	9.150	1.565	0	-9.015	0	-130726.209	-70297.989	110.163	172.405095		
K.152	K.153	173 29 49	273 20 43	13.401	0.782	0	-13.378	0	-130725.427	-70311.367	87.770	68.636140		
K.153	K.154	171 6 54	264 27 37	10.711	-1.034	0	-10.661	0	-130726.461	-70322.028	63.731	-65.897854		
K.154	K.155	186 44 19	271 11 56	5.400	0.113	0	-5.399	0	-130726.348	-70327.427	47.671	5.386823		
K.155	K.156	187 35 8	278 47 4	8.296	1.267	0	-8.199	0	-130725.081	-70335.626	34.073	43.170491		
K.156	18BL-99	175 31 5	274 18 9	9.502	0.713	0	-9.475	0	-130724.368	-70345.101	16.399	11.692487		
18BL-99	18BL-100	107 4 0	201 22 9	19.002	-17.696	0	-6.924	0	-130742.064	-70352.025	0.000	0.000000		
TOTAL..	ソツカクスウ=	23	3780	0	0		258.949	0.000	0	0.001	-1		ハイメンセキ= 5998.935696	
													1/2= 2999.46	+0.00
													メンセキ= 2999.46	

*** メンセキ ケイサン (ハイオウキヨホウ) ***

チクメイ... ミヤコタチク トチクカクセイリシキヨウ

セリ NO... 18BL(3)-1

NO.	NO.	ANGLE	AZIMUTH	LENGTH	DX	*	DY	*	X	Y	DMD	2A	カ-フメンセキ
18BL-97	18BL-82		180 1 16						-130849.212	-70227.478			
18BL-82	18BL-83	136 29 33	136 30 49	44.003	-31.926	0	30.282	0	-130881.138	-70197.196	30.243	-965.538018	
18BL-83	18BL-96	43 31 2	0 1 51	74.424	74.424	0	0.040	0	-130806.714	-70197.156	60.565	4507.489560	
18BL-96	18BL-95	270 0 39	90 2 30	106.951	-0.078	0	106.951	0	-130806.792	-70090.205	167.556	-13.069368	
18BL-95	18BL-94	89 59 34	0 2 4	74.230	74.230	0	0.045	0	-130732.562	-70090.160	274.552	20379.994960	
18BL-94	K.136	97 11 1	277 13 5	16.388	2.059	0	-16.258	0	-130730.503	-70106.418	258.339	531.920001	
K.136	K.137	169 30 40	266 43 45	22.048	-1.258	0	-22.012	0	-130731.761	-70128.430	220.069	-276.846802	
K.137	K.138	181 55 27	268 39 12	22.765	-0.535	0	-22.759	0	-130732.296	-70151.189	175.298	-93.784430	
K.138	K.139	175 37 44	264 16 56	21.550	-2.147	0	-21.443	0	-130734.443	-70172.632	131.096	-281.463112	
K.139	K.140	177 11 5	261 28 1	7.420	-1.101	0	-7.338	0	-130735.544	-70179.970	102.315	-112.648815	
K.140	K.141	170 10 46	251 38 47	8.022	-2.526	0	-7.614	0	-130738.070	-70187.584	87.363	-220.678938	
K.141	K.142	170 24 24	242 3 11	11.311	-5.301	0	-9.992	0	-130743.371	-70197.576	69.757	-369.781857	
K.142	K.143	185 42 18	247 45 29	7.054	-2.670	0	-6.529	0	-130746.041	-70204.105	53.236	-142.140120	
K.143	K.144	197 15 4	265 0 33	10.655	-0.927	0	-10.615	0	-130746.968	-70214.720	36.092	-33.457284	
K.144	K.145	192 23 47	277 24 20	5.625	0.725	0	-5.578	0	-130746.243	-70220.298	19.899	14.426775	
K.145	K.146	203 8 57	300 33 17	6.749	3.431	0	-5.812	0	-130742.812	-70226.110	8.509	29.194379	
K.146	18BL-97	153 25 17	273 58 34	1.332	0.092	0	-1.329	0	-130742.720	-70227.439	1.368	0.125856	
18BL-97	18BL-82	86 2 42	180 1 16	106.492	-106.492	0	-0.039	0	-130849.212	-70227.478	0.000	0.000000	
TOTAL..	ソツカクスウ=	17	2700 0 0	547.019	0.000	0	0.000	0			ハイメンセキ=	22953.742787	
											1/2=	11476.87	+0.00
											メンセキ=	11476.87	

*** メンセキ ケイサン (ハイオウキヨホウ) ***

チクメイ ... ミヤコタチク トチクカクセイリシキヨウ

セイリ NO... 18BL(3)-2

NO.	NO.	ANGLE	AZIMUTH	LENGTH	DX	*	DY	*	X	Y	DMD	2A	カーブメンセキ
18BL-96	18BL-83		180 1 51						-130881.138	-70197.196			
18BL-83	18BL-27	136 28 58	136 30 49	59.728	-43.335	0	41.104	0	-130924.473	-70156.092	41.064	-1779.508440	
18BL-27	18BL-28	178 49 50	135 20 39	4.001	-2.846	0	2.812	0	-130927.319	-70153.280	84.980	-241.853080	
18BL-28	18BL-29	177 40 6	133 0 45	3.996	-2.726	0	2.922	0	-130930.045	-70150.358	90.714	-247.286364	
18BL-29	18BL-30	177 31 2	130 31 47	4.001	-2.600	0	3.041	0	-130932.645	-70147.317	96.677	-251.360200	
18BL-30	18BL-31	177 16 16	127 48 3	4.001	-2.452	0	3.161	0	-130935.097	-70144.156	102.879	-252.259308	
18BL-31	18BL-32	177 32 24	125 20 27	3.995	-2.311	0	3.259	0	-130937.408	-70140.897	109.299	-252.589989	
18BL-32	18BL-33	177 36 25	122 56 52	4.003	-2.177	0	3.359	0	-130939.585	-70137.538	115.917	-252.351309	
18BL-33	18BL-34	177 12 1	120 8 53	4.000	-2.009	0	3.459	0	-130941.594	-70134.079	122.735	-246.574615	
18BL-34	18BL-35	178 0 43	118 9 36	4.001	-1.888	0	3.527	0	-130943.482	-70130.552	129.721	-244.913248	
18BL-35	18BL-36	177 20 54	115 30 30	4.001	-1.723	0	3.611	0	-130945.205	-70126.941	136.859	-235.808057	
18BL-36	18BL-37	177 34 32	113 5 2	3.999	-1.568	0	3.679	0	-130946.773	-70123.262	144.149	-226.025632	
18BL-37	18BL-38	177 29 44	110 34 46	3.997	-1.405	0	3.742	0	-130948.178	-70119.520	151.570	-212.955850	
18BL-38	18BL-39	177 20 34	107 55 20	3.994	-1.229	0	3.800	0	-130949.407	-70115.720	159.112	-195.548648	
18BL-39	18BL-40	177 34 19	105 29 39	3.994	-1.067	0	3.849	0	-130950.474	-70111.871	166.761	-177.933987	
18BL-40	18BL-41	177 44 29	103 14 8	3.992	-0.914	0	3.886	0	-130951.388	-70107.985	174.496	-159.489344	
18BL-41	18BL-42	177 0 51	100 14 59	3.996	-0.711	0	3.932	0	-130952.099	-70104.053	182.314	-129.625254	
18BL-42	18BL-43	177 35 34	97 50 33	4.001	-0.546	0	3.964	0	-130952.645	-70100.089	190.210	-103.854660	
18BL-43	18BL-44	177 25 29	95 16 2	3.998	-0.367	0	3.981	0	-130953.012	-70096.108	198.155	-72.722885	
18BL-44	18BL-45	177 37 57	92 53 59	3.993	-0.202	0	3.988	0	-130953.214	-70092.120	206.124	-41.637048	
18BL-45	18BL-84	177 51 35	90 45 34	1.827	-0.024	0	1.827	0	-130953.238	-70090.293	211.939	-5.086536	
18BL-84	18BL-95	89 16 30	0 2 4	146.446	146.446	0	0.088	0	-130806.792	-70090.205	213.854	31318.062884	
18BL-95	18BL-96	90 0 26	270 2 30	106.951	0.078	0	-106.951	0	-130806.714	-70197.156	106.991	8.345298	
18BL-96	18BL-83	89 59 21	180 1 51	74.424	-74.424	0	-0.040	0	-130881.138	-70197.196	0.000	0.000000	
TOTAL...	ソツカクス=	23	3780 0 0	461.339	0.000	0	0.000	0			ハイメンセキ=	25997.023728	
											1/2=	12998.51	+0.00
											メンセキ=	12998.51	

*** メンセキ ケイサン (ハイオウキヨボウ) ***

チクメイ ... ミヤコタチク トチクカクセイリシキヨウ

セリ NO... 18BL(2)-2

NO.	NO.	ANGLE	AZIMUTH	LENGTH	DX	*	DY	*	X	Y	DMD	2A	カーブメンセキ
18BL-98	18BL-81		180 1 45						-130800.477	-70273.704			
18BL-81	18BL-82	136 29 4	136 30 49	67.171	-48.735	0	46.226	0	-130849.212	-70227.478	46.191	-2251.118385	
18BL-82	18BL-97	43 30 27	0 1 16	106.492	106.492	0	0.039	0	-130742.720	-70227.439	92.456	9845.824352	
18BL-97	K.147	93 57 18	273 58 34	7.249	0.503	0	-7.232	1	-130742.217	-70234.670	85.264	42.887792	
K.147	K.148	188 31 19	282 29 53	26.862	5.813	0	-26.225	0	-130736.404	-70260.895	51.808	301.159904	
K.148	K.149	187 50 4	290 19 57	10.047	3.491	0	-9.421	0	-130732.913	-70270.316	16.162	56.421542	
K.149	18BL-98	176 20 53	286 40 50	3.501	1.005	0	-3.354	1	-130731.908	-70273.669	3.388	3.404940	
18BL-98	18BL-81	73 20 55	180 1 45	68.569	-68.569	0	-0.035	0	-130800.477	-70273.704	0.000	0.000000	
TOTAL..	ソツカクスウ= 7	900 0 0		289.891	0.000	0	-0.002	2			ハイメンセキ=	7998.580145	
											1/2=	3999.29	+0.00
											メンセキ=	3999.29	

*** メンセキ ケイサン (ハ"イオウキヨホウ) ***

チクメイ ... ミヤコタ"チク トチクカクセイリシ"キ"ヨウ

セイリ NO... (18BL(4)-1・(4)-2) ✓

NO.	NO.	ANGLE	AZIMUTH	LENGTH	DX	*	DY	*	X	Y	DMD	2A	カーブ"メンセキ		
18BL-94	18BL-84 ✓		180 2 4						-130953.238	-70090.293					
18BL-84	18BL-46 ✓	90 43 30	90 45 34 ✓	2.171 ✓	-0.029	0	2.171	0	-130953.267	-70088.122	2.038	-0.059102			
18BL-46	18BL-47 ✓	177 30 19	88 15 53 ✓	3.996 ✓	0.121	0	3.994	0	-130953.146	-70084.128	8.203	0.992563			
18BL-47	18BL-48 ✓	177 18 9	85 34 2 ✓	3.998 ✓	0.309	0	3.986	0	-130952.837	-70080.142	16.183	5.000547			
18BL-48	18BL-49 ✓	177 42 40	83 16 42 ✓	3.998 ✓	0.468	0	3.971	0	-130952.369	-70076.171	24.140	11.297520			
18BL-49	18BL-50 ✓	178 0 57	81 17 39 ✓	3.997 ✓	0.605	0	3.951	0	-130951.764	-70072.220	32.062	19.397510			
18BL-50	18BL-51 ✓	176 51 23	78 9 2 ✓	3.998 ✓	0.821	0	3.913	0	-130950.943	-70068.307	39.926	32.779246			
18BL-51	18BL-52 ✓	177 50 28	75 59 30 ✓	3.999 ✓	0.968	0	3.880	0	-130949.975	-70064.427	47.719	46.191992			
18BL-52	18BL-53 ✓	177 21 45	73 21 15 ✓	4.001 ✓	1.146	0	3.833	0	-130948.829	-70060.594	55.432	63.525072			
18BL-53	18BL-54 ✓	177 35 39	70 56 54 ✓	3.995 ✓	1.304	0	3.776	0	-130947.525	-70056.818	63.041	82.205464			
18BL-54	18BL-55 ✓	177 50 44	68 47 38 ✓	3.199 ✓	1.157	0	2.982	0	-130946.368	-70053.836	69.799	80.757443			
18BL-55	18BL-56 ✓	178 1 50	66 49 28 ✓	3.260 ✓	1.283	0	2.997	0	-130945.085	-70050.839	75.778	97.223174			
18BL-56	18BL-85 ✓	179 39 9	66 28 37 ✓	86.269 ✓	34.432	0	79.100	0	-130910.653	-69971.739	157.875	5435.952000			
18BL-85	18BL-86 ✓	113 33 21	0 1 58 ✓	13.386 ✓	13.386	0	0.008	0	-130897.267	-69971.731	236.983	3172.254438			
18BL-86	18BL-87 ✓	270 0 0	90 1 58 ✓	4.100 ✓	-0.002	0	4.100	0	-130897.269	-69967.631	241.091	-0.482182			
18BL-87	18BL-89 ✓	90 0 0	0 1 58 ✓	188.310 ✓	188.310	0	0.108	-1	-130708.959	-69967.524	245.298	46192.066380			
18BL-89	18BL-65 ✓	96 45 3	276 47 1 ✓	81.648 ✓	9.644	0	-81.076	0	-130699.315	-70048.600	164.329	1584.788876			
18BL-65	K.131 ✓	72 19 14	169 6 15 ✓	33.844 ✓	-33.234	0	6.397	0	-130732.549	-70042.203	89.650	-2979.428100			
K.131	K.132 ✓	276 57 9	266 3 24 ✓	3.359 ✓	-0.231	0	-3.351	0	-130732.780	-70045.554	92.696	-21.412776			
K.132	K.133 ✓	172 45 48	258 49 12 ✓	18.149 ✓	-3.519	0	-17.805	0	-130736.299	-70063.359	71.540	-251.749260			
K.133	K.134 ✓	187 18 52	266 8 4 ✓	8.203 ✓	-0.553	0	-8.184	0	-130736.852	-70071.543	45.551	-25.189703			
K.134	K.135 ✓	198 22 1	284 30 5 ✓	15.120 ✓	3.786	0	-14.638	0	-130733.066	-70086.181	22.729	86.051994			
K.135	18BL-94 ✓	172 43 0	277 13 5 ✓	4.011 ✓	0.504	0	-3.979	0	-130732.562	-70090.160	4.112	2.072448			
18BL-94	18BL-84 ✓	82 48 59	180 2 4 ✓	220.676 ✓	-220.676	0	-0.133	0	-130953.238	-70090.293	0.000	0.000000			
TOTAL..	ソツカク"スウ=	23	3780	0	0		717.687	0.000	0 ✓	0.001	-1 ✓		ハ"イメンセキ=	53634.235544	
													1/2=	26817.11	+0.00
													メンセキ=	26817.11 ✓	

*** メンセキ ケイサン (ハ"イウキヨホウ) ***

チクメイ ... ミヤコタチク トチクカクセイリシ"キ"ヨウ

セリリ NO... 18BL(4)-1 ✓

NO.	NO.	ANGLE	AZIMUTH	LENGTH	DX	*	DY	*	X	Y	DMD	2A	カ-フ"メンセキ
18BL-94	18BL-84 ✓		180 2 4						-130953.238	-70090.293			
18BL-84	18BL-46 ✓	90 43 30	90 45 34 ✓	2.171 ✓	-0.029	0	2.171	0	-130953.267	-70088.122	2.038	-0.059102	
18BL-46	18BL-47 ✓	177 30 19	88 15 53 ✓	3.996 ✓	0.121	0	3.994	0	-130953.146	-70084.128	8.203	0.992563	
18BL-47	18BL-48 ✓	177 18 9	85 34 2 ✓	3.998 ✓	0.309	0	3.986	0	-130952.837	-70080.142	16.183	5.000547	
18BL-48	18BL-49 ✓	177 42 40	83 16 42 ✓	3.998 ✓	0.468	0	3.971	0	-130952.369	-70076.171	24.140	11.297520	
18BL-49	18BL-50 ✓	178 0 57	81 17 39 ✓	3.997 ✓	0.605	0	3.951	0	-130951.764	-70072.220	32.062	19.397510	
18BL-50	18BL-51 ✓	176 51 23	78 9 2 ✓	3.998 ✓	0.821	0	3.913	0	-130950.943	-70068.307	39.926	32.779246	
18BL-51	18BL-52 ✓	177 50 28	75 59 30 ✓	3.999 ✓	0.968	0	3.880	0	-130949.975	-70064.427	47.719	46.191992	
18BL-52	18BL-53 ✓	177 21 45	73 21 15 ✓	4.001 ✓	1.146	0	3.833	0	-130948.829	-70060.594	55.432	63.525072	
18BL-53	18BL-54 ✓	177 35 39	70 56 54 ✓	3.995 ✓	1.304	0	3.776	0	-130947.525	-70056.818	63.041	82.205464	
18BL-54	18BL-55 ✓	177 50 44	68 47 38 ✓	3.199 ✓	1.157	0	2.982	0	-130946.368	-70053.836	69.799	80.757443	
18BL-55	18BL-56 ✓	178 1 50	66 49 28 ✓	3.260 ✓	1.283	0	2.997	0	-130945.085	-70050.839	75.778	97.223174	
18BL-56	18BL-85 ✓	179 39 9	66 28 37 ✓	86.269 ✓	34.432	0	79.100	0	-130910.653	-69971.739	157.875	5435.952000	
18BL-85	18BL-86 ✓	113 33 21	0 1 58 ✓	13.386 ✓	13.386	0	0.008	0	-130897.267	-69971.731	236.983	3172.254438	
18BL-86	18BL-87 ✓	270 0 0	90 1 58 ✓	4.100 ✓	-0.002	0	4.100	0	-130897.269	-69967.631	241.091	-0.482182	
18BL-87	18BL-89 ✓	90 0 0	0 1 58 ✓	188.310 ✓	188.310	0	0.108	-1	-130708.959	-69967.524	245.298	46192.066380	
18BL-89	18BL-90 ✓	96 45 3	276 47 1 ✓	64.111 ✓	7.573	0	-63.662	0	-130701.386	-70031.186	181.743	1376.339739	
18BL-90	18BL-91 ✓	100 4 13	196 51 14 ✓	12.734 ✓	-12.187	0	-3.692	0	-130713.573	-70034.878	114.389	-1394.058743	
18BL-91	18BL-92 ✓	237 57 21	254 48 35 ✓	6.442 ✓	-1.688	0	-6.217	0	-130715.261	-70041.095	104.480	-176.362240	
18BL-92	18BL-93 ✓	201 44 33	276 33 8 ✓	4.566 ✓	0.521	0	-4.536	0	-130714.740	-70045.631	93.727	48.831767	
18BL-93	K.131 ✓	72 33 7	169 6 15 ✓	18.136 ✓	-17.809	0	3.428	0	-130732.549	-70042.203	92.619	-1649.451771	
K.131	K.132 ✓	276 57 9	266 3 24 ✓	3.359 ✓	-0.231	0	-3.351	0	-130732.780	-70045.554	92.696	-21.412776	
K.132	K.133 ✓	172 45 48	258 49 12 ✓	18.149 ✓	-3.519	0	-17.805	0	-130736.299	-70063.359	71.540	-251.749260	
K.133	K.134 ✓	187 18 52	266 8 4 ✓	8.203 ✓	-0.553	0	-8.184	0	-130736.852	-70071.543	45.551	-25.189703	

*** メンセキ ケイサン (ハ"イオウキヨホウ) ***

チクメイ ... ミヤコタ"チク トチクカクセイリシ"キ"ヨウ

セリ NO... 18BL(4)-1 ✓

NO.	INO.	ANGLE	AZIMUTH	LENGTH	DX	*	DY	*	X	Y	DMD	2A	カ-フ"メンセキ
K.134	K.135 ✓	198 22 1	284 30 5 ✓	15.120 ✓	3.786	0	-14.638	0	-130733.066	-70086.181	22.729	86.051994	
K.135	18BL-94 ✓	172 43 0	277 13 5 ✓	4.011 ✓	0.504	0	-3.979	0	-130732.562	-70090.160	4.112	2.072448	
18BL-94	18BL-84 ✓	82 48 59	180 2 4 ✓	220.676 ✓	-220.676	0	-0.133	0	-130953.238	-70090.293	0.000	0.000000	
TOTAL..	ソツカク入= 26	4320 0 0		708.184	0.000	0 ✓	0.001	-1 ✓					
											ハ"イメンセキ=	53234.173520	
											1/2=	26617.08	+0.00
											メンセキ=	26617.08 ✓	

*** メンセキ ケイサン (ハ"イオウキヨホウ) ***

チクメイ ... ミヤコタ"チク トチクカクセイリシ"キ"ヨク

セリ NO... 18BL(4)-2 ✓

NO.	NO.	ANGLE	AZIMUTH	LENGTH	DX	*	DY	*	X	Y	DMD	2A	カーブ"メンセキ
18BL-65	18BL-93 ✓		169 6 15						-130714.740	-70045.631			
18BL-93	18BL-92 ✓	107 26 53	96 33 8 ✓	4.566 ✓	-0.521	0	4.536	0	-130715.261	-70041.095	7.505	-3.910105	
18BL-92	18BL-91 ✓	158 15 27	74 48 35 ✓	6.442 ✓	1.688	0	6.217	0	-130713.573	-70034.878	18.258	30.819504	
18BL-91	18BL-90 ✓	122 2 39	16 51 14 ✓	12.734 ✓	12.187	0	3.692	0	-130701.386	-70031.186	28.167	343.271229	
18BL-90	18BL-65 ✓	79 55 47	276 47 1 ✓	17.537 ✓	2.071	0	-17.414	0	-130699.315	-70048.600	14.445	29.915595	
18BL-65	18BL-93 ✓	72 19 14	169 6 15 ✓	15.708 ✓	-15.425	0	2.969	0	-130714.740	-70045.631	0.000	0.000000	
TOTAL..	ソツカク入ウ= 5	540 0 0		56.987	0.000	0 ✓	0.000	0 ✓			ハ"イメンセキ=	400.096223	
											1/2=	200.04	+0.00
											メンセキ=	200.04 ✓	
												- 0.01 ✓	
												200.03 ✓	

セリ NO... 18BL(4)-3 ✓

18BL-86	18BL-85 ✓		180 1 58						-130910.653	-69971.739			
18BL-85	18BL-88 ✓	66 26 39	66 28 37 ✓	4.472 ✓	1.785	-1	4.100	1	-130908.869	-69967.638	4.093	7.301912	
18BL-88	18BL-87 ✓	113 33 21	0 1 58 ✓	11.600 ✓	11.600	0	0.007	0	-130897.269	-69967.631	8.201	95.131600	
18BL-87	18BL-86 ✓	90 0 0	270 1 58 ✓	4.100 ✓	0.002	0	-4.100	0	-130897.267	-69971.731	4.108	0.008216	
18BL-86	18BL-85 ✓	90 0 0	180 1 58 ✓	13.386 ✓	-13.386	0	-0.008	0	-130910.653	-69971.739	0.000	0.000000	
TOTAL..	ソツカク入ウ= 4	360 0 0		33.558	0.001	-1 ✓	-0.001	1 ✓			ハ"イメンセキ=	102.441728	
											1/2=	51.22	+0.00
											メンセキ=	51.22 ✓	

*** メンセキ さいさん (ハイオウキヨホウ) ***

チクメイ ... ミヤコタチク トチクカクセイリシキヨウ

NO.	NO.	ANGLE	AZIMUTH	LENGTH	DX	*	DY	*	X	Y	DMD	2A	カ-フ"メンセキ
18BL-89	18BL-88✓		180 1 58						-130908.869	-69967.638			
18BL-88	18BL-57✓	66 26 39	66 28 37//	162.857✓	64.999	0	149.324	-1	-130843.870	-69818.315	149.209	9698.435791	
18BL-57	18BL-58✓	134 41 27	21 10 4✓	9.909✓	9.240	0	3.578	0	-130834.630	-69814.737	302.110	2791.496400	
18BL-58	18BL-59✓	135 18 16	336 28 20✓	118.869✓	108.987	0	-47.452	0	-130725.643	-69862.189	258.236	28144.366932	
18BL-59	18BL-60✓	106 26 39	262 54 59✓	4.298✓	-0.530	0	-4.265	0	-130726.173	-69866.454	206.519	-109.455070	
18BL-60	18BL-61✓	215 45 9	298 40 8✓	9.795✓	4.699	0	-8.594	0	-130721.474	-69875.048	193.660	910.008340	
18BL-61	18BL-62✓	170 36 47	289 16 55✓	10.184✓	3.363	0	-9.613	0	-130718.111	-69884.661	175.453	590.048439	
18BL-62	18BL-63✓	170 26 19	279 43 14✓	10.755✓	1.816	0	-10.601	0	-130716.295	-69895.262	155.239	281.914024	
18BL-63	18BL-64✓	175 4 25	274 47 39✓	36.039✓	3.012	0	-35.913	0	-130713.283	-69931.175	108.725	327.479700	
18BL-64	18BL-89✓	181 59 22	276 47 1✓	36.605✓	4.324	0	-36.349	0	-130708.959	-69967.524	36.463	157.666012	
18BL-89	18BL-88✓	83 14 57	180 1 58✓	199.910✓	-199.910	0	-0.114	0	-130908.869	-69967.638	0.000	0.000000	
TOTAL..	ソツカクヌウ= 10	1440	0 0	599.221	0.000	0	0.001	-1			ハイメンセキ=	42791.960568	
											1/2=	21395.98	+0.00
											メンセキ=	21395.98✓	

チクメイ ... ミヤコタチク トチクカクセイリシキヨウ

NO.	NO.	ANGLE *	AZIMUTH	LENGTH	DX	*	DY	*	X	Y	NO.
	18BL-14 ✓								-130741.593	-70353.420	18BL-14
18BL-14	18BL-100 ✓		108 40 3 ✓	1.472 ✓	-0.471	0	1.395	0	-130742.064	-70352.025	18BL-100
18BL-100	18BL-15 ✓	180 0 0	108 40 3 ✓	4.530 ✓	-1.450	0	4.292	-1	-130743.514	-70347.734	18BL-15
	TOTAL..	180 0 0		6.002 ✓	-1.921	0 ✓	5.687	-1 ✓			
	18BL-26 ✓								-130778.116	-70294.914	18BL-26
18BL-26	18BL-81 ✓		136 30 49 ✓	30.820 ✓	-22.361	0	21.210	0	-130800.477	-70273.704	18BL-81
18BL-81	18BL-82 ✓	180 0 0	136 30 49 ✓	67.171 ✓	-48.735	0	46.226	0	-130849.212	-70227.478	18BL-82
18BL-82	18BL-83 ✓	180 0 0	136 30 49 ✓	44.003 ✓	-31.926	0	30.282	0	-130881.138	-70197.196	18BL-83
18BL-83	18BL-27 ✓	180 0 0	136 30 49 ✓	59.728 ✓	-43.335	0	41.104	0	-130924.473	-70156.092	18BL-27
	TOTAL..	540 0 0		201.722 ✓	-146.357	0 ✓	138.822	0 ✓			
	18BL-45 ✓								-130953.214	-70092.120	18BL-45
18BL-45	18BL-84 ✓		90 45 34 ✓	1.827 ✓	-0.024	0	1.827	0	-130953.238	-70090.293	18BL-84
18BL-84	18BL-46 ✓	180 0 0	90 45 34 ✓	2.171 ✓	-0.029	0	2.171	0	-130953.267	-70088.122	18BL-46
	TOTAL..	180 0 0		3.998 ✓	-0.053	0 ✓	3.998	0 ✓			
	18BL-56 ✓								-130945.085	-70050.839	18BL-56
18BL-56	18BL-85 ✓		66 28 37 ✓	86.269 ✓	34.432	0	79.100	0	-130910.653	-69971.739	18BL-85
18BL-85	18BL-88 ✓	180 0 0	66 28 37 ✓	4.472 ✓	1.785	-1	4.100	1	-130908.869	-69967.638	18BL-88
18BL-88	18BL-57 ✓	180 0 0	66 28 37 ✓	162.857 ✓	64.999	0	149.324	-1	-130843.870	-69818.315	18BL-57
	TOTAL..	360 0 0		253.598 ✓	101.216	-1 ✓	232.524	0 ✓			
	18BL-64 ✓								-130713.283	-69931.175	18BL-64

チクメイ ... ミヤコタチク トチクカクセイリシキヨウ

NO.	NO.	ANGLE *	AZIMUTH	LENGTH	DX	* DY	* X	Y	NO.
18BL-64	18BL-89 ✓		276 47 1 ✓	36.605 ✓	4.324	0 -36.349	0 -130708.959	-69967.524	18BL-89
18BL-89	18BL-90 ✓	180 0 0	276 47 1 ✓	64.111 ✓	7.573	0 -63.662	0 -130701.386	-70031.186	18BL-90
18BL-90	18BL-65 ✓	180 0 0	276 47 1 ✓	17.537 ✓	2.071	0 -17.414	0 -130699.315	-70048.600	18BL-65
	TOTAL..	360 0 0		118.253 ✓	13.968	0 ✓ -117.425	0 ✓		
	K.130 ✓						-130695.748	-70049.287	K.130
K.130	18BL-65 ✓		169 6 15 ✓	3.633 ✓	-3.568	1 0.687	0 -130699.315	-70048.600	18BL-65
18BL-65	18BL-93 ✓	180 0 0	169 6 15 ✓	15.708 ✓	-15.425	0 2.969	0 -130714.740	-70045.631	18BL-93
18BL-93	K.131 ✓	180 0 0	169 6 15 ✓	18.136 ✓	-17.809	0 3.428	0 -130732.549	-70042.203	K.131
	TOTAL...	360 0 0		37.477 ✓	-36.802	1 ✓ 7.084	0 ✓		
	K.135 ✓						-130733.066	-70086.181	K.135
K.135	18BL-94 ✓		277 13 5 ✓	4.011 ✓	0.504	0 -3.979	0 -130732.562	-70090.160	18BL-94
18BL-94	K.136 ✓	180 0 0	277 13 5 ✓	16.388 ✓	2.059	0 -16.258	0 -130730.503	-70106.418	K.136
	TOTAL..	180 0 0		20.399 ✓	2.563	0 ✓ -20.237	0 ✓		
	K.146 ✓						-130742.812	-70226.110	K.146
K.146	18BL-97 ✓		273 58 34 ✓	1.332 ✓	0.092	0 -1.329	0 -130742.720	-70227.439	18BL-97
18BL-97	K.147 ✓	180 0 0	273 58 34 ✓	7.249 ✓	0.503	0 -7.232	1 -130742.217	-70234.670	K.147
	TOTAL..	180 0 0		8.581 ✓	0.595	0 ✓ -8.561	1 ✓		
	K.149 ✓						-130732.913	-70270.316	K.149
K.149	18BL-98 ✓		286 40 50 ✓	3.501 ✓	1.005	0 -3.354	1 -130731.908	-70273.669	18BL-98
18BL-98	K.150 ✓	180 0 0	286 40 50 ✓	4.453 ✓	1.278	0 -4.266	0 -130730.630	-70277.935	K.150

*** ケツコウ トラバース ***

チクメイ ... ミヤコタチク トチクカクセイリシキヨウ

NO.	NO.	ANGLE *	AZIMUTH	LENGTH	DX	* DY	* X	Y	NO.
	TOTAL...	180 0 0		7.954 ✓	2.283	0 ✓	-7.620	1 ✓	
	K.156 ✓						-130725.081	-70335.626	K.156
K.156	18BL-99 ✓		274 18 9 ✓	9.502 ✓	0.713	0	-9.475	0	-130724.368 -70345.101 18BL-99
18BL-99	K.157 ✓	180 0 0	274 18 9 ✓	7.533 ✓	0.565	0	-7.512	0	-130723.803 -70352.613 K.157
	TOTAL...	180 0 0		17.035 ✓	1.278	0 ✓	-16.987	0 ✓	
	18BL-84 ✓						-130953.238	-70090.293	18BL-84
18BL-84	18BL-95 ✓		0 2 4 ✓	146.446 ✓	146.446	0	0.088	0	-130806.792 -70090.205 18BL-95
18BL-95	18BL-94 ✓	180 0 0	0 2 4 ✓	74.230 ✓	74.230	0	0.045	0	-130732.562 -70090.160 18BL-94
	TOTAL...	180 0 0		220.676 ✓	220.676	0 ✓	0.133	0 ✓	
	18BL-88 ✓						-130908.869	-69967.638	18BL-88
18BL-88	18BL-87 ✓		0 1 58 ✓	11.600 ✓	11.600	0	0.007	0	-130897.269 -69967.631 18BL-87
18BL-87	18BL-89 ✓	180 0 0	0 1 58 ✓	188.310 ✓	188.310	0	0.108	-1	-130708.959 -69967.524 18BL-89
	TOTAL...	180 0 0		199.910 ✓	199.910	0 ✓	0.115	-1 ✓	