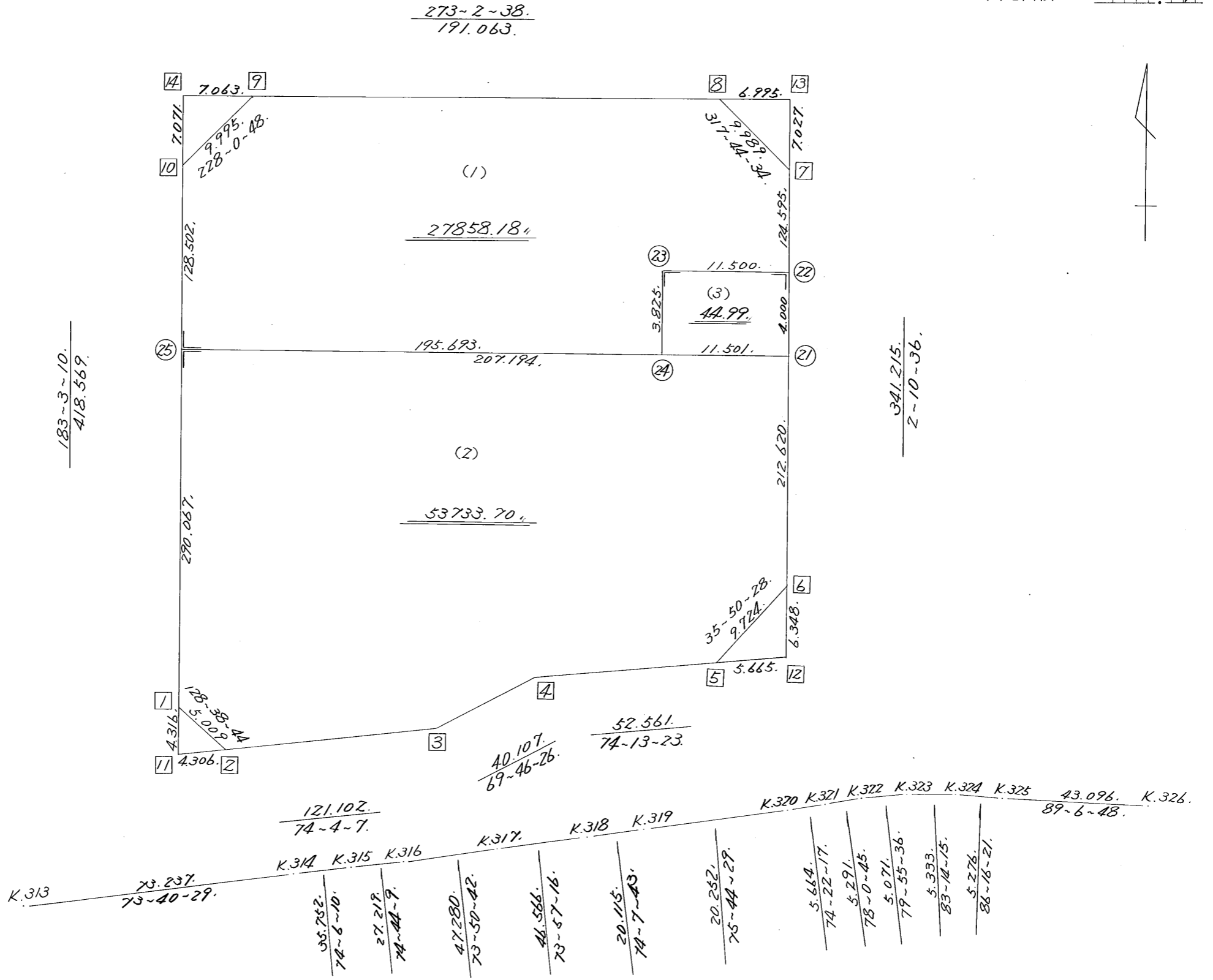


略 図

街区面積 = $\frac{81636.61}{m^2}$
 画地面積 = $\frac{81636.87}{m^2}$



$\frac{183-3-10.}{418.569.}$

$\frac{341.215.}{2-10-36.}$

街区点番号 1 ~ 14, 筆界点番号 21 ~ 25, 画地番号 (1) ~ (3)

*** メンセキ ケイサン (ハイイオウキヨホウ) ***

チクメイ ... ミヤコタチク トチクカクセイリシキヨウ

NO.	NO.	ANGLE	AZIMUTH	LENGTH	DX	*	DY	*	X	Y	DMD	2A	カーブメンセキ
28BL-10	28BL- 1 ✓		183 3 10						-131795.978	-70250.935			
28BL- 1	28BL- 2 ✓	125 35 34	128 38 44 ✓	5.009 ✓	-3.128	0	3.912	0	-131799.106	-70247.023	-18.380	57.492640	
28BL- 2	28BL- 3 ✓	125 25 23	74 4 7 ✓	121.102 ✓	33.241	0	116.451	0	-131765.865	-70130.572	101.983	3390.016903	
28BL- 3	28BL- 4 ✓	175 42 19	69 46 26 ✓	40.107 ✓	13.866	0	37.634	0	-131751.999	-70092.938	256.068	3550.638888	
28BL- 4	28BL- 5 ✓	184 26 57	74 13 23 ✓	52.561 ✓	14.291	0	50.581	0	-131737.708	-70042.357	344.283	4920.148353	
28BL- 5	28BL- 6 ✓	141 37 5	35 50 28 ✓	9.724 ✓	7.883	0	5.694	0	-131729.825	-70036.663	400.558	3157.598714	
28BL- 6	28BL- 7 ✓	146 20 8	2 10 36 ✓	341.215 ✓	340.969	0	12.960	-1	-131388.856	-70023.704	419.211	142937.955459	
28BL- 7	28BL- 8 ✓	135 33 58	317 44 34 ✓	9.989 ✓	7.393	0	-6.717	0	-131381.463	-70030.421	425.453	3145.374029	
28BL- 8	28BL- 9 ✓	135 18 4	273 2 38 ✓	191.063 ✓	10.146	0	-190.793	0	-131371.317	-70221.214	227.943	2312.709678	
28BL- 9	28BL-10 ✓	134 58 10	228 0 48 ✓	9.995 ✓	-6.686	0	-7.429	0	-131378.003	-70228.643	29.721	-198.714606	
28BL-10	28BL- 1 ✓	135 2 22	183 3 10 ✓	418.569 ✓	-417.975	0	-22.291	-1	-131795.978	-70250.935	0.000	0.000000	
TOTAL..	ソツカクスク= 10	1440	0 0	1199.334	0.000	0 ✓	0.002	-2 ✓					
									ハイイオウキヨホウ=	163273.220058			
									1/2=	81636.61			+0.00
									メンセキ=	81636.61 ✓			

*** メンセキ ケイサン (ハイイウキヨホウ) ***

チクメイ ... ミヤコタチク トチクカクセイリシキヨウ

セリ NO... 28BL(1) ✓

NO.	NO.	ANGLE	AZIMUT-H			LENGTH	DX	*	DY	*	X	Y	DMD	2A	カ-フ'メンセキ
28BL-10	28BL-25 ✓		183	3	10					-131506.323	-70235.487				
28BL-25	28BL-24 ✓	90 0 0	93	3	10 ✓	195.693 ✓	-10.422	-1	195.415	0	-131516.746	-70040.072	188.571	-1965.475533	
28BL-24	28BL-23 ✓	89 7 26	2	10	36 ✓	3.825 ✓	3.822	0	0.145	0	-131512.924	-70039.927	384.131	1468.148682	
28BL-23	28BL-22 ✓	270 0 0	92	10	36 ✓	11.500 ✓	-0.437	0	11.492	0	-131513.361	-70028.435	395.768	-172.950616	
28BL-22	28BL- 7 ✓	90 0 0	2	10	36 ✓	124.595 ✓	124.505	0	4.732	-1	-131388.856	-70023.704	411.991	51294.939455	
28BL- 7	28BL- 8 ✓	135 33 58	317	44	34 ✓	9.989 ✓	7.393	0	-6.717	0	-131381.463	-70030.421	410.005	3031.166965	
28BL- 8	28BL- 9 ✓	135 18 4	273	2	38 ✓	191.063 ✓	10.146	0	-190.793	0	-131371.317	-70221.214	212.495	2155.974270	
28BL- 9	28BL-10 ✓	134 58 10	228	0	48 ✓	9.995 ✓	-6.686	0	-7.429	0	-131378.003	-70228.643	14.273	-95.429278	
28BL-10	28BL-25 ✓	135 2 22	183	3	10 ✓	128.502 ✓	-128.320	0	-6.843	-1	-131506.323	-70235.487	0.000	0.000000	
TOTAL..	ソツカクスク=	8	1080	0	0	675.162	0.001	-1 ✓	0.002	-2 ✓			ハイイメンセキ=	55716.373945	
													1/2=	27858.18 +0.00	
													メンセキ=	27858.18 ✓	

セリ NO... 28BL(2)

28BL-25	28BL- 1 ✓		183	3	10					-131795.978	-70250.935			
28BL- 1	28BL- 2 ✓	125 35 34	128	38	44 ✓	5.009 ✓	-3.128	0	3.912	0	-131799.106	-70247.023	-11.536	36.084608
28BL- 2	28BL- 3 ✓	125 25 23	74	4	7 ✓	121.102 ✓	33.241	0	116.451	0	-131765.865	-70130.572	108.827	3617.518307
28BL- 3	28BL- 4 ✓	175 42 19	69	46	26 ✓	40.107 ✓	13.866	0	37.634	0	-131751.999	-70092.938	262.912	3645.537792
28BL- 4	28BL- 5 ✓	184 26 57	74	13	23 ✓	52.561 ✓	14.291	0	50.581	0	-131737.708	-70042.357	351.127	5017.955957
28BL- 5	28BL- 6 ✓	141 37 5	35	50	28 ✓	9.724 ✓	7.883	0	5.694	0	-131729.825	-70036.663	407.402	3211.549966
28BL- 6	28BL-21 ✓	146 20 8	2	10	36 ✓	212.620 ✓	212.467	0	8.075	1	-131517.358	-70028.587	421.172	89485.151324
28BL-21	28BL-25 ✓	90 52 34	273	3	10 ✓	207.194 ✓	11.034	1	-206.900	0	-131506.323	-70235.487	222.348	2453.610180
28BL-25	28BL- 1 ✓	90 0 0	183	3	10 ✓	290.067 ✓	-289.655	0	-15.448	0	-131795.978	-70250.935	0.000	0.000000
TOTAL..	ソツカクスク=	8	1080	0	0	938.384	-0.001	1 ✓	-0.001	1 ✓			ハイイメンセキ=	107467.408134
													1/2=	53733.70 +0.00
													メンセキ=	53733.70 ✓

*** メンセキ ケイサン (ハ"イオウキヨホウ) ***

チクメイ ... ミヤコタ"チク トチクカクセイリシ"キ"ヨウ

セリ NO... 28BL(3) ✓

NO.	NO.	ANGLE	AZIMUTH	LENGTH	DX	*	DY	*	X	Y	DMD	2A	カ-フ"メンセキ
28BL-23	28BL-24 ✓		182 10 36						-131516.746	-70040.072			
28BL-24	28BL-21 ✓	90 52 34	93 3 10 ✓	11.501 ✓	-0.612	0	11.485	0	-131517.358	-70028.587	11.340	-6.940080	
28BL-21	28BL-22 ✓	89 7 26	2 10 36 ✓	4.000 ✓	13.997	0	0.152	0	-131513.361	-70028.435	22.977	91.839069	
28BL-22	28BL-23 ✓	90 0 0	272 10 36 ✓	11.500 ✓	0.437	0	-11.492	0	-131512.924	-70039.927	11.637	5.085369	
28BL-23	28BL-24 ✓	90 0 0	182 10 36 ✓	3.825 ✓	-3.822	0	-0.145	0	-131516.746	-70040.072	0.000	0.000000	
TOTAL..	ソツカク入= 4	360 0 0		30.826	0.000	0 ✓	0.000	0 ✓			ハ"イメンセキ=	89.984358	
											1/2=	44.99	+0.00
											メンセキ=	44.99 ✓	

*** ケツコウ トラハス ***

チクメイ ... ミヤコタチク トチクカクセイリシキヨウ

NO.	NO.	ANGLE *	AZIMUTH	LENGTH	DX	* DY	* X	Y	NO.	
	28BL- 6 ✓							-131729.825	-70036.663	28BL- 6
28BL- 6	28BL-21 ✓		2 10 36 ✓	212.620 ✓	212.467	0	8.075	1 -131517.358	-70028.587	28BL-21
28BL-21	28BL-22 ✓	180 0 0	2 10 36 ✓	4.000 ✓	3.997	0	0.152	0 -131513.361	-70028.435	28BL-22
28BL-22	28BL- 7 ✓	180 0 0	2 10 36 ✓	124.595 ✓	124.505	0	4.732	-1 -131388.856	-70023.704	28BL- 7
	TOTAL..	360 0 0		341.215 ✓	340.969	0 ✓	12.959	0 ✓		
	28BL-10 ✓							-131378.003	-70228.643	28BL-10
28BL-10	28BL-25 ✓		183 3 10 ✓	128.502 ✓	-128.320	0	-6.843	-1 -131506.323	-70235.487	28BL-25
28BL-25	28BL- 1 ✓	180 0 0	183 3 10 ✓	290.067 ✓	-289.655	0	-15.448	0 -131795.978	-70250.935	28BL- 1
	TOTAL..	180 0 0		418.569 ✓	-417.975	0 ✓	-22.291	-1 ✓		

*** コウテン ケイサン (2 チョクセン) ***

チクメイ ... ミヤコタチク トチクカクセイリシキキヨウ

PNO.	NO.	PX	PY	AZIMUTH	(AZIMUTH)	LENGTH	QX	QY	QNO.
P1	28BL-10 ✓	-131378.003	-70228.643	183 3 10 ✓	(183 3 10)	422.885 ✓			
P3	28BL- 3 ✓	-131765.865	-70130.572	254 4 7 ✓	(254 4 7)	125.4088 ✓			
Q							-131800.288	-70251.164	28BL-11 ✓
P2	28BL- 1 ✓	-131795.978	-70250.935	183 3 10 ✓	(183 2 29)	4.316 ✓			
P4	28BL- 2 ✓	-131799.106	-70247.023	254 4 7 ✓	(254 4 9)	4.306 ✓			
P1	28BL- 7 ✓	-131388.856	-70023.704	182 10 36 ✓	(182 10 36)	347.563 ✓			
P3	28BL- 4 ✓	-131751.999	-70092.938	74 13 23 ✓	(74 13 24)	58.226 ✓			
Q							-131736.168	-70036.905	28BL-12 ✓
P2	28BL- 6 ✓	-131729.825	-70036.663	182 10 36 ✓	(182 11 6)	6.348 ✓			
P4	28BL- 5 ✓	-131737.708	-70042.357	74 13 23 ✓	(74 13 37)	5.665 ✓			
P1	28BL- 6 ✓	-131729.825	-70036.663	2 10 36 ✓	(2 10 36)	348.242 ✓			
P3	28BL- 9 ✓	-131371.317	-70221.214	93 2 38 ✓	(93 2 38)	198.0578 ✓			
Q							-131381.834	-70023.436	28BL-13 ✓
P2	28BL- 7 ✓	-131388.856	-70023.704	2 10 36 ✓	(2 11 8)	7.027 ✓			
P4	28BL- 8 ✓	-131381.463	-70030.421	93 2 38 ✓	(93 2 25)	6.995 ✓			
P1	28BL- 1 ✓	-131795.978	-70250.935	3 3 10 ✓	(3 3 10)	425.640 ✓			
P3	28BL- 8 ✓	-131381.463	-70030.421	273 2 38 ✓	(273 2 38)	198.126 ✓			
Q							-131370.942	-70228.267	28BL-14 ✓
P2	28BL-10 ✓	-131378.003	-70228.643	3 3 10 ✓	(3 2 53)	7.071 ✓			
P4	28BL- 9 ✓	-131371.317	-70221.214	273 2 38 ✓	(273 2 37)	7.063 ✓			