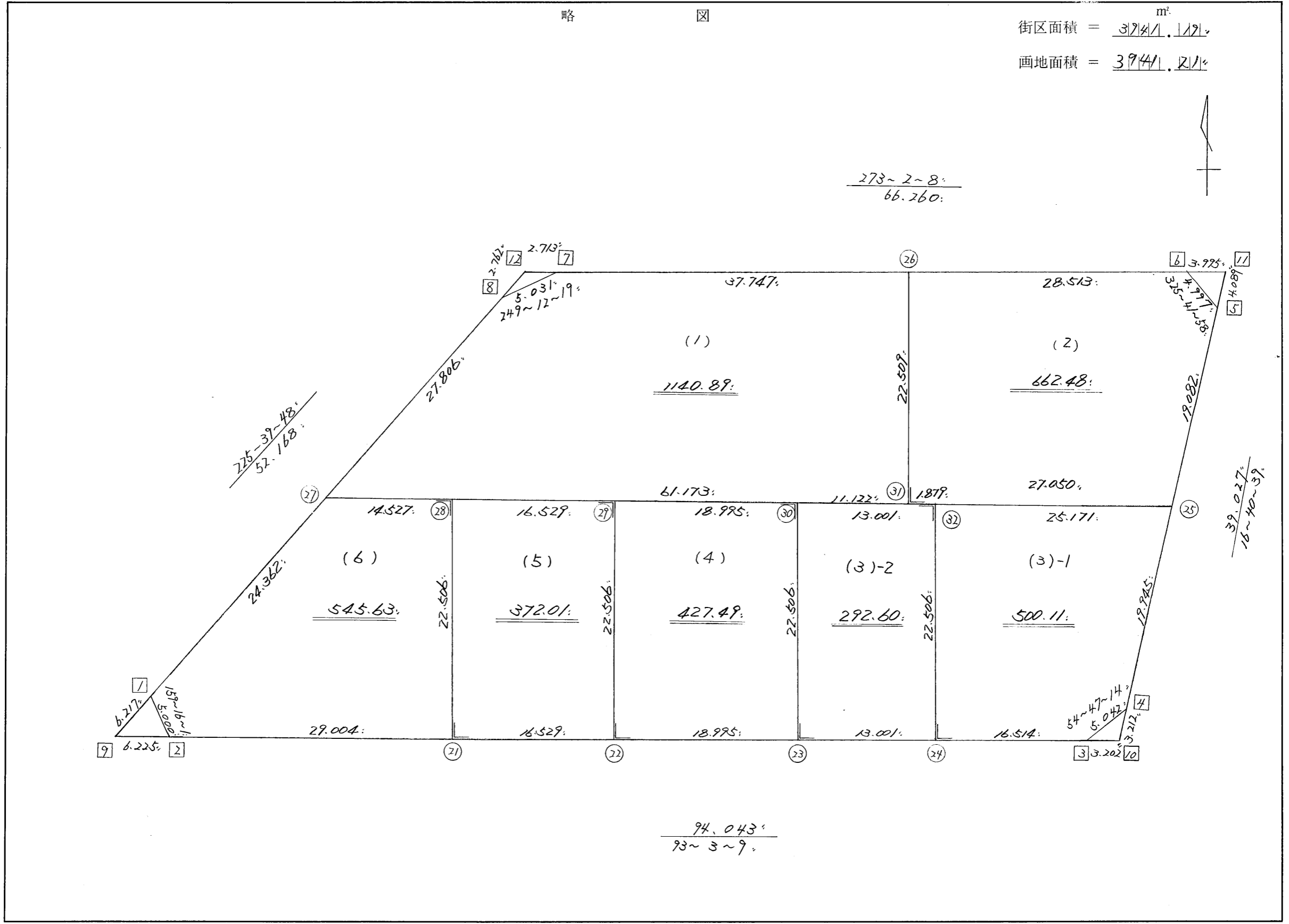


略 図

街区面積 =  $\frac{3741.121}{m^2}$   
 画地面積 =  $\frac{3941.211}{m^2}$



街区点番号 1 ~ 12, 筆界点番号 21 ~ 32, 画地番号 ( 1 ) ~ ( 6 )

\*\*\* ムツセキ ケイサン (ハイイウキヨホウ) \*\*\*

チクメイ ... ミヤコタチク トチクカクセイリシキヨウ

セリ NO... 54BL ✓

NO.	NO.	ANGLE	AZIMUTH	LENGTH	DX	*	DY	*	X	Y	DMD	2A	カ-フムツセキ
54BL- 8	54BL- 1✓		225 39 48						-130706.077	-68953.554			
54BL- 1	54BL- 2✓	113 36 13	159 16 1✓	5.000✓	-4.676	0	1.770	0	-130710.753	-68951.784	-35.543	166.199068	
54BL- 2	54BL- 3✓	113 47 8	93 3 9✓	94.043✓	-5.008	0	93.910	0	-130715.761	-68857.874	60.137	-301.166096	
54BL- 3	54BL- 4✓	141 44 5	54 47 14✓	5.042✓	2.907	0	4.119	0	-130712.854	-68853.755	158.166	459.788562	
54BL- 4	54BL- 5✓	141 53 25	16 40 39✓	39.027✓	37.385	0	11.200	0	-130675.469	-68842.555	173.485	6485.736725	
54BL- 5	54BL- 6✓	129 1 19	325 41 58✓	4.997✓	4.128	0	-2.816	0	-130671.341	-68845.371	181.869	750.755232	
54BL- 6	54BL- 7✓	127 20 10	273 2 8✓	66.260✓	3.509	0	-66.167	0	-130667.832	-68911.538	112.886	396.116974	
54BL- 7	54BL- 8✓	156 10 11	249 12 19✓	5.031✓	-1.786	0	-4.703	0	-130669.618	-68916.241	42.016	-75.040576	
54BL- 8	54BL- 1✓	156 27 29	225 39 48✓	52.168✓	-36.459	0	-37.313	0	-130706.077	-68953.554	0.000	0.000000	
TOTAL..	ツツカクスタ= 8	1080	0 0	271.568✓	0.000	0✓	0.000	0✓			ハイイウキヨホウ=	7882.389889	
											1/2=	3941.19	+0.00
											ムツセキ=	3941.19✓	

\*\*\* メンセキ ケイサク (ハ"イオウキヨホウ) \*\*\*

チクメイ ... ミヤコタ"チク トチクカクセイリヨ"キ"ヨウ

セリヨ NO... 54BL(1)✓

NO.	NO.	ANGLE	AZIMUTH	LENGTH	DX	*	DY	*	X	Y	DMO	2A	カ-フ"メンセキ
54BL- 8	54BL-27✓		225 39 48						-130689.051	-68936.129			
54BL-27	54BL-31✓	47 23 21	93 3 9✓	61.173✓	-3.258	1	61.086	0	-130692.308	-68875.043	41.198	-134.181886	
54BL-31	54BL-26✓	90 0 0	3 3 9✓	22.509✓	22.477	0	1.199	0	-130669.831	-68873.844	103.483	2325.987391	
54BL-26	54BL- 7✓	89 58 59	273 2 8✓	37.747✓	1.999	0	-37.694	0	-130667.832	-68911.538	66.988	133.909012	
54BL- 7	54BL- 8✓	156 10 11	249 12 19✓	5.031✓	-1.786	0	-4.703	0	-130669.618	-68916.241	24.591	-43.919526	
54BL- 8	54BL-27✓	156 27 29	225 39 48✓	27.806✓	-19.433	0	-19.888	0	-130689.051	-68936.129	0.000	0.000000	
TOTAL..	ソツカクスク= 5	540 0 0		154.266	-0.001	1✓	0.000	0✓			ハ"イオウキ=	2281.794991	
											1/2=	1140.89	+0.00
											メンセキ=	1140.89✓	

セリヨ NO... 54BL(2)✓

54BL-26	54BL-31✓		183 3 9						-130692.308	-68875.043			
54BL-31	54BL-25✓	90 0 0	93 3 9✓	27.050✓	-1.440	0	27.012	0	-130693.748	-68848.031	25.813	-37.170720	
54BL-25	54BL- 5✓	103 37 30	16 40 39✓	19.082✓	18.279	0	5.476	0	-130675.469	-68842.555	58.301	1065.683979	
54BL- 5	54BL- 6✓	129 1 19	325 41 58✓	4.997✓	4.128	0	-2.816	0	-130671.341	-68845.371	60.961	251.647008	
54BL- 6	54BL-26✓	127 20 10	273 2 8✓	28.513✓	1.510	0	-28.473	0	-130669.831	-68873.844	29.672	44.804720	
54BL-26	54BL-31✓	90 1 1	183 3 9✓	22.509✓	-22.477	0	-1.199	0	-130692.308	-68875.043	0.000	0.000000	
TOTAL..	ソツカクスク= 5	540 0 0		102.151	0.000	0✓	0.000	0✓			ハ"イオウキ=	1324.964987	
											1/2=	662.48	+0.00
											メンセキ=	662.48✓	

\*\*\* メンセキ ケイサン (ハイイウキヨホウ) \*\*\*

チクメイ ... ミヤコタチク トチクカクセイリシキヨウ

レイ NO... 54BL(3)✓

NO.	NO.	ANGLE	AZIMUTH	LENGTH	DX	*	DY	*	X	Y	DMD	2A	カ-フメセキ
54BL-32	54BL-24✓		183 3 9						-130714.881	-68874.365			
54BL-24	54BL-3✓	90 0 0	93 3 9✓	16.514✓	-0.879	-1	16.491	0	-130715.761	-68857.874	15.292	-13.456960	
54BL-3	54BL-4✓	141 44 5	54 47 14✓	5.042✓	2.907	0	4.119	0	-130712.854	-68853.755	35.902	104.367114	
54BL-4	54BL-25✓	141 53 25	16 40 39✓	19.945✓	19.106	0	5.724	0	-130693.748	-68848.031	45.745	874.003970	
54BL-25	54BL-32✓	76 22 30	273 3 9✓	25.171✓	1.340	1	-25.135	0	-130692.407	-68873.166	26.334	35.313894	
54BL-32	54BL-24✓	90 0 0	183 3 9✓	22.506✓	-22.474	0	-1.198	-1	-130714.881	-68874.365	0.000	0.000000	
TOTAL..	ソツカク入ウ= 5	540 0 0		89.178	0.000	0	0.001	-1			ハイイウキヨホウ=	1000.228018	
											1/2=	500.11	+0.00
											メセキ=	500.11✓	

レイ NO... 54BL(4)✓

54BL-30	54BL-23✓		183 3 9						-130714.189	-68887.348			
54BL-23	54BL-24✓	90 0 0	93 3 9✓	13.001✓	-0.692	0	12.983	0	-130714.881	-68874.365	11.784	-8.154528	
54BL-24	54BL-32✓	90 0 0	3 3 9✓	22.506✓	22.474	0	1.198	1	-130692.407	-68873.166	25.966	583.559884	
54BL-32	54BL-30✓	90 0 0	273 3 9✓	13.001✓	0.692	0	-12.983	0	-130691.715	-68886.149	14.182	9.813944	
54BL-30	54BL-23✓	90 0 0	183 3 9✓	22.506✓	-22.474	0	-1.198	-1	-130714.189	-68887.348	0.000	0.000000	
TOTAL..	ソツカク入ウ= 4	360 0 0		71.014	0.000	0	0.000	0			ハイイウキヨホウ=	585.219300	
											1/2=	292.60	+0.00
											メセキ=	292.60✓	

\*\*\* ムンセキ ケイサン (ハ"イオウキヨホウ) \*\*\*

チクメイ ... ミヤコタ"チク トチクカクセイリヨ"キ"ヨウ

セリヨ NO... 54BL(5)✓

NO.	NO.	ANGLE	AZIMUTH			LENGTH	DX	*	DY	*	X	Y	DMD	2A	カ-フ"ムンセキ
54BL-29	54BL-22✓		183	3	9						-130713.178	-68906.316			
54BL-22	54BL-23✓	90 0 0	93	3	9✓	18.995✓	-1.012	1	18.968	0	-130714.189	-68887.348	17.769	-17.964459	
54BL-23	54BL-30✓	90 0 0	3	3	9✓	22.506✓	22.474	0	1.198	1	-130691.715	-68886.149	37.936	852.573664	
54BL-30	54BL-29✓	90 0 0	273	3	9✓	18.995✓	1.012	-1	-18.968	0	-130690.704	-68905.117	20.167	20.388837	
54BL-29	54BL-22✓	90 0 0	183	3	9✓	22.506✓	-22.474	0	-1.198	-1	-130713.178	-68906.316	0.000	0.000000	
TOTAL..	ソツカクスク= 4	360 0 0				83.002	0.000	0✓	0.000	0✓			ハ"イムンセキ=	854.998042	
													1/2=	427.49	+0.00
													ムンセキ=	427.49✓	

セリヨ NO... 54BL(5)✓

54BL-28	54BL-21✓		183	3	9						-130712.298	-68922.822			
54BL-21	54BL-22✓	90 0 0	93	3	9✓	16.529✓	-0.880	0	16.506	0	-130713.178	-68906.316	15.307	-13.470160	
54BL-22	54BL-29✓	90 0 0	3	3	9✓	22.506✓	22.474	0	1.198	1	-130690.704	-68905.117	33.012	741.911688	
54BL-29	54BL-28✓	90 0 0	273	3	9✓	16.529✓	0.880	0	-16.506	0	-130689.824	-68921.623	17.705	15.580400	
54BL-28	54BL-21✓	90 0 0	183	3	9✓	22.506✓	-22.474	0	-1.198	-1	-130712.298	-68922.822	0.000	0.000000	
TOTAL..	ソツカクスク= 4	360 0 0				78.070	0.000	0✓	0.000	0✓			ハ"イムンセキ=	744.021928	
													1/2=	372.01	+0.00
													ムンセキ=	372.01✓	

\*\*\* ムコセキ ケイサン (ハイイウキヨホウ) \*\*\*

チクメイ ... ミヤコタチク トチクカクセイリシキヨウ

セリ NO... 54BL(8)✓

NO.	NO.	ANGLE	AZIMUTH	LENGTH	DX	*	DY	*	X	Y	DMD	2A	カーブムコセキ
54BL-27	54BL- 1✓		225 39 48						-130706.077	-68953.554			
54BL- 1	54BL- 2✓	113 36 13	159 16 1✓	5.000✓	-4.676	0	1.770	0	-130710.753	-68951.784	-15.655	73.202780	
54BL- 2	54BL-21✓	113 47 8	93 3 9✓	29.004✓	-1.544	-1	28.963	-1	-130712.298	-68922.822	15.077	-23.293965	
54BL-21	54BL-28✓	90 0 0	3 3 9✓	22.506✓	22.474	0	1.198	1	-130689.824	-68921.623	45.238	1016.678812	
54BL-28	54BL-27✓	90 0 0	273 3 9✓	14.527✓	0.774	-1	-14.506	0	-130689.051	-68936.129	31.931	24.682663	
54BL-27	54BL- 1✓	132 36 39	225 39 48✓	24.362✓	-17.026	0	-17.425	0	-130706.077	-68953.554	0.000	0.000000	
TOTAL..	ソツカクスク= 5	540 0 0		95.399	0.002	-2✓	0.000	0✓			ハイイムコセキ=	1091.270290	
											1/2=	545.63	+0.00
											ムコセキ=	545.63✓	

チクメイ ... ミヤコタチク トチクカクセイリシキヨウ

NO.	NO.	ANGLE *	AZIMUTH	LENGTH	DX	* DY	X	Y	NO.		
	54BL- 2 ✓						-130710.753	-68951.784	54BL- 2		
54BL- 2	54BL-21 ✓		93 3 9 ✓	29.004 ✓	-1.544	-1	28.963	-1	-130712.298	-68922.822	54BL-21
54BL-21	54BL-22 ✓	180 0 0	93 3 9 ✓	16.529 ✓	-0.880	0	16.506	0	-130713.178	-68906.316	54BL-22
54BL-22	54BL-23 ✓	180 0 0	93 3 9 ✓	18.995 ✓	-1.012	1	18.968	0	-130714.189	-68887.348	54BL-23
54BL-23	54BL-24 ✓	180 0 0	93 3 9 ✓	13.001 ✓	-0.692	0	12.983	0	-130714.881	-68874.365	54BL-24
54BL-24	54BL- 3 ✓	180 0 0	93 3 9 ✓	16.514 ✓	-0.879	-1	16.491	0	-130715.761	-68857.874	54BL- 3
	TOTAL..	720 0 0		94.043 ✓	-5.007	-1 ✓	93.911	-1 ✓			
	54BL- 4 ✓						-130712.854	-68853.755	54BL- 4		
54BL- 4	54BL-25 ✓		16 40 39 ✓	19.945 ✓	19.106	0	5.724	0	-130693.748	-68848.031	54BL-25
54BL-25	54BL- 5 ✓	180 0 0	16 40 39 ✓	19.082 ✓	18.279	0	5.476	0	-130675.469	-68842.555	54BL- 5
	TOTAL..	180 0 0		39.027 ✓	37.385	0 ✓	11.200	0 ✓			
	54BL- 6 ✓						-130671.341	-68845.371	54BL- 6		
54BL- 6	54BL-26 ✓		273 2 8 ✓	28.513 ✓	1.510	0	-28.473	0	-130669.831	-68873.844	54BL-26
54BL-26	54BL- 7 ✓	180 0 0	273 2 8 ✓	37.747 ✓	1.999	0	-37.694	0	-130667.832	-68911.538	54BL- 7
	TOTAL..	180 0 0		66.260 ✓	3.509	0 ✓	-66.167	0 ✓			
	54BL- 8 ✓						-130669.618	-68916.241	54BL- 8		
54BL- 8	54BL-27 ✓		225 39 48 ✓	27.806 ✓	-19.433	0	-19.888	0	-130689.051	-68936.129	54BL-27
54BL-27	54BL- 1 ✓	180 0 0	225 39 48 ✓	24.362 ✓	-17.026	0	-17.425	0	-130706.077	-68953.554	54BL- 1
	TOTAL..	180 0 0		52.168 ✓	-36.459	0 ✓	-37.313	0 ✓			
	54BL-27 ✓						-130689.051	-68936.129	54BL-27		

チクメイ . . . ミヤコタチク トチクカクセイリシキヨウ

NO.	NO.	ANGLE *	AZIMUTH	LENGTH	DX *	DY *	X	Y	NO.
54BL-27	54BL-31 ✓		93 3 9 ✓	61.173 ✓	-3.258	61.086	-130692.308	-68875.043	54BL-31
54BL-31	54BL-25 ✓	180 0 0	93 3 9 ✓	27.050 ✓	-1.440	27.012	-130693.748	-68848.031	54BL-25
	TOTAL..	180 0 0		88.223 ✓	-4.698	88.098			
	54BL-27 ✓						-130689.051	-68936.129	54BL-27
54BL-27	54BL-28 ✓		93 3 9 ✓	14.527 ✓	-0.774	14.506	-130689.824	-68921.623	54BL-28
54BL-28	54BL-29 ✓	180 0 0	93 3 9 ✓	16.529 ✓	-0.880	16.506	-130690.704	-68905.117	54BL-29
54BL-29	54BL-30 ✓	180 0 0	93 3 9 ✓	18.995 ✓	-1.012	18.968	-130691.715	-68886.149	54BL-30
54BL-30	54BL-32 ✓	180 0 0	93 3 9 ✓	13.001 ✓	-0.692	12.983	-130692.407	-68873.166	54BL-32
54BL-32	54BL-25 ✓	180 0 0	93 3 9 ✓	25.171 ✓	-1.340	25.135	-130693.748	-68848.031	54BL-25
	TOTAL..	720 0 0		88.223 ✓	-4.698	88.098			
	54BL-27 ✓						-130689.051	-68936.129	54BL-27
54BL-27	54BL-28 ✓		93 3 9 ✓	14.527 ✓	-0.774	14.506	-130689.824	-68921.623	54BL-28
54BL-28	54BL-29 ✓	180 0 0	93 3 9 ✓	16.529 ✓	-0.880	16.506	-130690.704	-68905.117	54BL-29
54BL-29	54BL-30 ✓	180 0 0	93 3 9 ✓	18.995 ✓	-1.012	18.968	-130691.715	-68886.149	54BL-30
54BL-30	54BL-31 ✓	180 0 0	93 3 9 ✓	11.122 ✓	-0.592	11.106	-130692.308	-68875.043	54BL-31
54BL-31	54BL-32 ✓	180 0 0	93 3 9 ✓	1.879 ✓	-0.100	1.876	-130692.407	-68873.166	54BL-32
54BL-32	54BL-25 ✓	180 0 0	93 3 9 ✓	25.171 ✓	-1.340	25.135	-130693.748	-68848.031	54BL-25
	TOTAL..	900 0 0		88.223 ✓	-4.698	88.097			