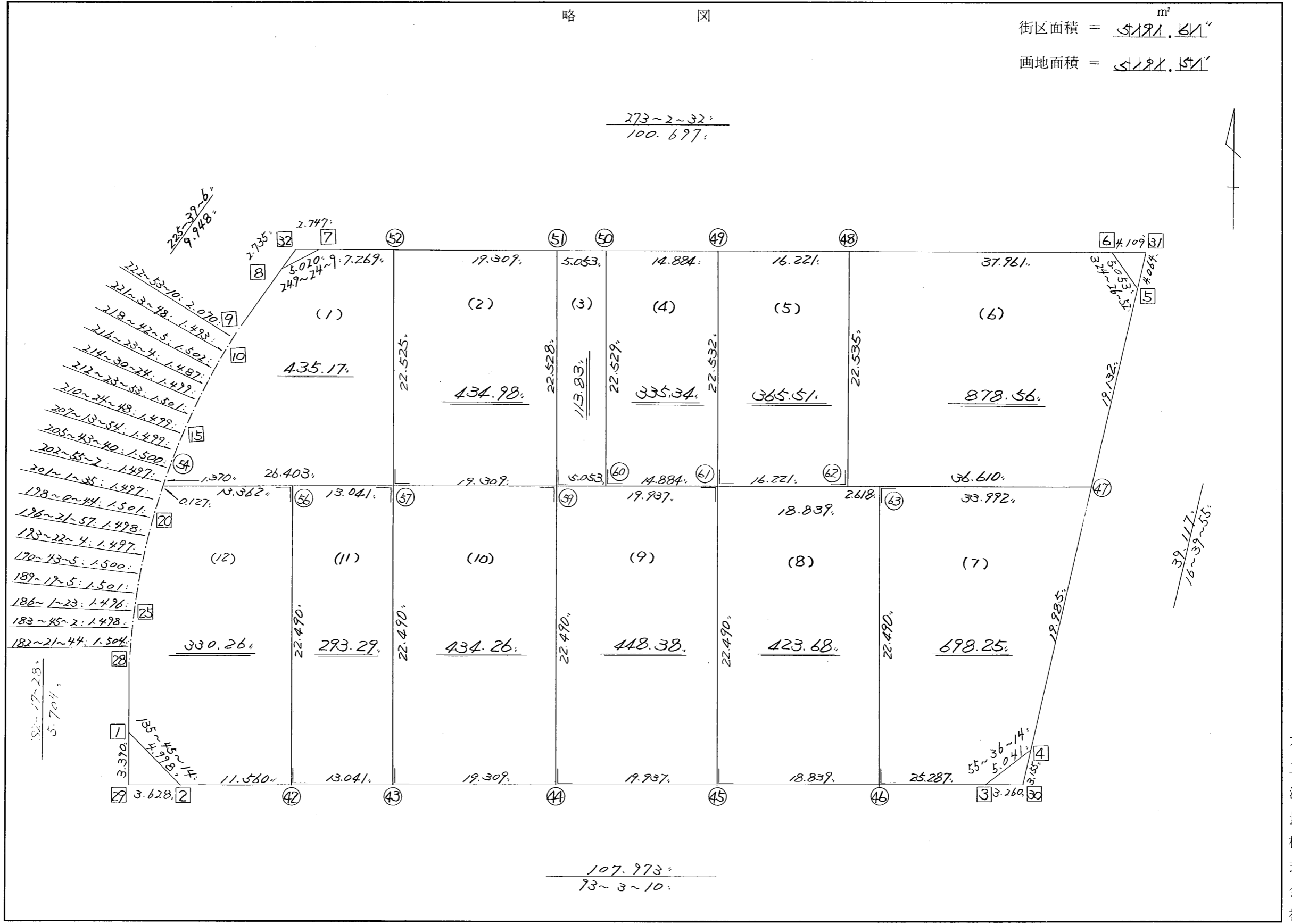


略 図

街区面積 = 5121.61 m²
 画地面積 = 5121.51



不二測量株式会社

街区点番号 1 ~ 32, 筆界点番号 42 ~ 63, 画地番号 (1) ~ (12)

*** ムンセキ ケイサン (ハ"イオウキヨホウ) ***

チクメイ ... ミヤコタ"チク トチクカクセイリシ"キ"ヨウ

セイリ NO... 55BLV

| NO. | NO. | ANGLE | AZIMUTH | LENGTH | DX | * | DY | * | X | Y | DMD | 2A | カ-フ"ムンセキ |
|---------|----------|-----------|------------|----------|--------|---|----------|---|-------------|------------|---------|-------------|----------|
| 55BL-28 | 55BL- 1V | | 182 17 28 | | | | | | -130756.705 | -68984.301 | | | |
| 55BL- 1 | 55BL- 2V | 133 27 46 | 135 45 14V | 4.998V | -3.580 | 0 | 3.487 | 0 | -130760.285 | -68980.814 | 3.259 | -11.667220 | |
| 55BL- 2 | 55BL- 3V | 137 17 56 | 93 3 10V | 107.973V | -5.750 | 0 | 107.820 | 0 | -130766.035 | -68872.994 | 114.566 | -658.754500 | |
| 55BL- 3 | 55BL- 4V | 142 33 4 | 55 36 14V | 5.041V | 2.848 | 0 | 4.160 | 0 | -130763.187 | -68868.834 | 226.546 | 645.203008 | |
| 55BL- 4 | 55BL- 5V | 141 3 41 | 16 39 55V | 39.117V | 37.474 | 0 | 11.218 | 0 | -130725.713 | -68857.616 | 241.924 | 9065.859976 | |
| 55BL- 5 | 55BL- 6V | 127 46 57 | 324 26 52V | 5.053V | 4.111 | 0 | -2.938 | 0 | -130721.602 | -68860.554 | 250.204 | 1028.588644 | |
| 55BL- 6 | 55BL- 7V | 128 35 40 | 273 2 32V | 100.697V | 5.344 | 0 | -100.555 | 0 | -130716.258 | -68961.109 | 146.711 | 784.023584 | |
| 55BL- 7 | 55BL- 8V | 156 21 37 | 249 24 9V | 5.020V | -1.766 | 0 | -4.699 | 0 | -130718.024 | -68965.808 | 41.457 | -73.213062 | |
| 55BL- 8 | 55BL- 9V | 156 14 57 | 225 39 6V | 9.948V | -6.954 | 0 | -7.114 | 0 | -130724.978 | -68972.922 | 29.644 | -206.144376 | |
| 55BL- 9 | 55BL-10V | 177 14 4 | 222 53 10V | 2.070V | -1.517 | 0 | -1.409 | 0 | -130726.495 | -68974.331 | 21.121 | -32.040557 | |
| 55BL-10 | 55BL-11V | 178 10 38 | 221 3 48V | 1.493V | -1.126 | 0 | -0.981 | 0 | -130727.621 | -68975.312 | 18.731 | -21.091106 | |
| 55BL-11 | 55BL-12V | 177 38 17 | 218 42 5V | 1.502V | -1.172 | 0 | -0.939 | 0 | -130728.793 | -68976.251 | 16.811 | -19.702492 | |
| 55BL-12 | 55BL-13V | 177 40 59 | 216 23 4V | 1.487V | -1.197 | 0 | -0.882 | 0 | -130729.990 | -68977.133 | 14.990 | -17.943030 | |
| 55BL-13 | 55BL-14V | 178 7 20 | 214 30 24V | 1.499V | -1.235 | 0 | -0.849 | 0 | -130731.225 | -68977.982 | 13.259 | -16.374865 | |
| 55BL-14 | 55BL-15V | 177 53 29 | 212 23 53V | 1.501V | -1.267 | 0 | -0.804 | 0 | -130732.492 | -68978.786 | 11.606 | -14.704802 | |
| 55BL-15 | 55BL-16V | 178 0 55 | 210 24 48V | 1.499V | -1.293 | 0 | -0.759 | 0 | -130733.785 | -68979.545 | 10.043 | -12.985599 | |
| 55BL-16 | 55BL-17V | 176 49 6 | 207 13 54V | 1.499V | -1.333 | 0 | -0.686 | 0 | -130735.118 | -68980.231 | 8.598 | -11.461134 | |
| 55BL-17 | 55BL-18V | 178 29 46 | 205 43 40V | 1.500V | -1.351 | 0 | -0.651 | 0 | -130736.469 | -68980.882 | 7.261 | -9.809611 | |
| 55BL-18 | 55BL-19V | 177 11 22 | 202 55 2V | 1.497V | -1.379 | 0 | -0.583 | 0 | -130737.848 | -68981.465 | 6.027 | -8.311233 | |
| 55BL-19 | 55BL-20V | 178 6 33 | 201 1 35V | 1.497V | -1.397 | 0 | -0.537 | 0 | -130739.245 | -68982.002 | 4.907 | -6.855079 | |
| 55BL-20 | 55BL-21V | 176 59 9 | 198 0 44V | 1.501V | -1.427 | 0 | -0.464 | 0 | -130740.672 | -68982.466 | 3.906 | -5.573862 | |
| 55BL-21 | 55BL-22V | 178 21 13 | 196 21 57V | 1.498V | -1.437 | 0 | -0.422 | 0 | -130742.109 | -68982.888 | 3.020 | -4.339740 | |
| 55BL-22 | 55BL-23V | 177 0 7 | 193 22 4V | 1.497V | -1.456 | 0 | -0.346 | 0 | -130743.565 | -68983.234 | 2.252 | -3.278912 | |
| 55BL-23 | 55BL-24V | 177 21 1 | 190 43 5V | 1.500V | -1.474 | 0 | -0.279 | 0 | -130745.039 | -68983.513 | 1.627 | -2.398198 | |

*** メンセキ ケイサン (ハ"イオウキヨホウ) ***

チクメイ ... ミヤコタ"チク トチクカクセイリシ"キ"ヨウ

セイリ NO... 55BL

| NO. | NO. | ANGLE | AZIMUTH | LENGTH | DX | * | DY | * | X | Y | DMD | 2A | カ-フ"メンセキ |
|---------|------------|-----------|------------|---------|--------|----|--------|----|-------------|------------|----------|--------------|----------|
| 55BL-24 | 55BL-25✓ | 178 36 0 | 189 19 5✓ | 1.501✓ | -1.481 | 0 | -0.243 | 0 | -130746.520 | -68983.756 | 1.105 | -1.636505 | |
| 55BL-25 | 55BL-26✓ | 176 42 18 | 186 1 23✓ | 1.496✓ | -1.488 | 0 | -0.157 | 0 | -130748.008 | -68983.913 | 0.705 | -1.049040 | |
| 55BL-26 | 55BL-27✓ | 177 43 39 | 183 45 2✓ | 1.498✓ | -1.495 | 0 | -0.098 | 0 | -130749.503 | -68984.011 | 0.450 | -0.672750 | |
| 55BL-27 | 55BL-28✓ | 178 36 42 | 182 21 44✓ | 1.504✓ | -1.503 | 0 | -0.062 | 0 | -130751.006 | -68984.073 | 0.290 | -0.435870 | |
| 55BL-28 | 55BL-1✓ | 179 55 44 | 182 17 28✓ | 5.704✓ | -5.699 | 0 | -0.228 | 0 | -130756.705 | -68984.301 | 0.000 | 0.000000 | |
| TOTAL.. | ソツカク入ウ= 28 | 4680 0 0 | | 312.590 | 0.000 | 0✓ | 0.000 | 0✓ | | | ハ"イオウキキ= | 10383.231669 | |
| | | | | | | | | | | | 1/2= | 5191.61 | +0.00 |
| | | | | | | | | | | | メンセキ= | 5191.61✓ | |

*** メンセキ ケイザン (ハ"イオウキヨホウ) ***

チクメイ ... ミヤコタ"チク トチクカクセイリシ"キ"ヨウ

セリ NO... 55BL(1) ✓

| NO. | NO. | ANGLE | AZIMUTH | LENGTH | DX | * | DY | * | X | Y | DMD | 2A | カ-フ"メンセキ |
|---------|-----------|-----------|-------------|----------|--------|-----|--------|------|-------------|------------|----------|-------------|----------|
| 55BL-18 | 55BL-54 ✓ | | 202 55 2 ✓ | | | | | | -130737.731 | -68981.416 | | | |
| 55BL-54 | 55BL-57 ✓ | 70 8 8 | 93 3 10 ✓ | 26.403 ✓ | -1.406 | 0 | 26.366 | 0 | -130739.137 | -68955.050 | 25.832 | -36.319792 | |
| 55BL-57 | 55BL-52 ✓ | 90 0 0 | 3 3 10 ✓ | 22.525 ✓ | 22.493 | 0 | 1.200 | -1 | -130716.644 | -68953.851 | 53.397 | 1201.058721 | |
| 55BL-52 | 55BL- 7 ✓ | 89 59 22 | 273 2 32 ✓ | 7.269 ✓ | 0.386 | 0 | -7.259 | 1 | -130716.258 | -68961.109 | 47.338 | 18.272468 | |
| 55BL- 7 | 55BL- 8 ✓ | 156 21 37 | 249 24 9 ✓ | 5.020 ✓ | -1.766 | 0 | -4.699 | 0 | -130718.024 | -68965.808 | 35.381 | -62.482846 | |
| 55BL- 8 | 55BL- 9 ✓ | 156 14 57 | 225 39 6 ✓ | 9.948 ✓ | -6.954 | 0 | -7.114 | 0 | -130724.978 | -68972.922 | 23.568 | -163.891872 | |
| 55BL- 9 | 55BL-10 ✓ | 177 14 4 | 222 53 10 ✓ | 2.070 ✓ | -1.517 | 0 | -1.409 | 0 | -130726.495 | -68974.331 | 15.045 | -22.823265 | |
| 55BL-10 | 55BL-11 ✓ | 178 10 38 | 221 3 48 ✓ | 1.493 ✓ | -1.126 | 0 | -0.981 | 0 | -130727.621 | -68975.312 | 12.655 | -14.249530 | |
| 55BL-11 | 55BL-12 ✓ | 177 38 17 | 218 42 5 ✓ | 1.502 ✓ | -1.172 | 0 | -0.939 | 0 | -130728.793 | -68976.251 | 10.735 | -12.581420 | |
| 55BL-12 | 55BL-13 ✓ | 177 40 59 | 216 23 4 ✓ | 1.487 ✓ | -1.197 | 0 | -0.882 | 0 | -130729.990 | -68977.133 | 8.914 | -10.670058 | |
| 55BL-13 | 55BL-14 ✓ | 178 7 20 | 214 30 24 ✓ | 1.499 ✓ | -1.235 | 0 | -0.849 | 0 | -130731.225 | -68977.982 | 7.183 | -8.871005 | |
| 55BL-14 | 55BL-15 ✓ | 177 53 29 | 212 23 53 ✓ | 1.501 ✓ | -1.267 | 0 | -0.804 | 0 | -130732.492 | -68978.786 | 5.530 | -7.006510 | |
| 55BL-15 | 55BL-16 ✓ | 178 0 55 | 210 24 48 ✓ | 1.499 ✓ | -1.293 | 0 | -0.759 | 0 | -130733.785 | -68979.545 | 3.967 | -5.129331 | |
| 55BL-16 | 55BL-17 ✓ | 176 49 6 | 207 13 54 ✓ | 1.499 ✓ | -1.333 | 0 | -0.686 | 0 | -130735.118 | -68980.231 | 2.522 | -3.361826 | |
| 55BL-17 | 55BL-18 ✓ | 178 29 46 | 205 43 40 ✓ | 1.500 ✓ | -1.351 | 0 | -0.651 | 0 | -130736.469 | -68980.882 | 1.185 | -1.600935 | |
| 55BL-18 | 55BL-54 ✓ | 177 11 22 | 202 55 2 ✓ | 1.370 ✓ | -1.262 | 0 | -0.533 | -1 | -130737.731 | -68981.416 | 0.000 | 0.000000 | |
| TOTAL.. | ソツカク入= 15 | 2340 | 0 0 | 86.585 | 0.000 | 0 ✓ | 0.001 | -1 ✓ | | | ハ"イメンセキ= | 870.342799 | |
| | | | | | | | | | | | 1/2= | 435.17 | +0.00 |
| | | | | | | | | | | | メンセキ= | 435.17 ✓ | |

*** メンセキ ケイザン (ハイオウキヨホウ) ***

チクメイ ... ミヤコタチク トチクカクセイリシキヨウ

セリ NO... 55BL(2)✓

| NO. | NO. | ANGLE | AZIMUTH | LENGTH | DX | * | DY | * | X | Y | DMD | 2A | カ-フメンセキ |
|---------|-----------|--------------|----------|---------|---------|----|---------|----|-------------|------------|---------|------------|---------|
| 55BL-52 | 55BL-57✓ | | 183 3 10 | | | | | | -130739.137 | -68955.050 | | | |
| 55BL-57 | 55BL-59✓ | 90 0 0 | 93 3 10✓ | 19.309✓ | -1.028 | 0 | 19.282 | 0 | -130740.165 | -68935.768 | 18.083 | -18.589324 | |
| 55BL-59 | 55BL-51✓ | 90 0 0 | 3 3 10✓ | 22.528✓ | 22.496 | 0 | 1.200 | 0 | -130717.669 | -68934.568 | 38.565 | 867.558240 | |
| 55BL-51 | 55BL-52✓ | 89 59 22 273 | 2 32✓ | 19.309✓ | 1.025 | 0 | -19.282 | -1 | -130716.644 | -68953.851 | 20.482 | 20.994050 | |
| 55BL-52 | 55BL-57✓ | 90 0 38 183 | 3 10✓ | 22.525✓ | -22.493 | 0 | -1.200 | 1 | -130739.137 | -68955.050 | 0.000 | 0.000000 | |
| TOTAL.. | ソツカクスク= 4 | 360 0 0 | | 83.671 | 0.000 | 0✓ | 0.000 | 0✓ | | | ハイメンセキ= | 869.962966 | |
| | | | | | | | | | | | 1/2= | 434.98 | +0.00 |
| | | | | | | | | | | | メンセキ= | 434.98✓ | |

セリ NO... 55BL(3)✓

| | | | | | | | | | | | | | |
|---------|-----------|--------------|----------|---------|---------|----|--------|----|-------------|------------|---------|------------|-------|
| 55BL-51 | 55BL-59✓ | | 183 3 10 | | | | | | -130740.165 | -68935.768 | | | |
| 55BL-59 | 55BL-60✓ | 90 0 0 | 93 3 10✓ | 5.053✓ | -0.269 | 0 | 5.046 | 0 | -130740.434 | -68930.722 | 3.846 | -1.034574 | |
| 55BL-60 | 55BL-50✓ | 90 0 0 | 3 3 10✓ | 22.529✓ | 22.497 | 0 | 1.200 | 0 | -130717.937 | -68929.522 | 10.092 | 227.039724 | |
| 55BL-50 | 55BL-51✓ | 89 59 22 273 | 2 32✓ | 5.053✓ | 0.268 | 0 | -5.046 | 0 | -130717.669 | -68934.568 | 6.246 | 1.673928 | |
| 55BL-51 | 55BL-59✓ | 90 0 38 183 | 3 10✓ | 22.528✓ | -22.496 | 0 | -1.200 | 0 | -130740.165 | -68935.768 | 0.000 | 0.000000 | |
| TOTAL.. | ソツカクスク= 4 | 360 0 0 | | 55.163 | 0.000 | 0✓ | 0.000 | 0✓ | | | ハイメンセキ= | 227.679078 | |
| | | | | | | | | | | | 1/2= | 113.83 | +0.00 |
| | | | | | | | | | | | メンセキ= | 113.83✓ | |

*** メンセキ ケイザン (ハ"イオウキヨホウ) ***

チクメイ ... ミヤコタ"チク トチクカクセイリシ"キ"ヨウ

| NO. | NO. | ANGLE | AZIMUTH | LENGTH | DX | * | DY | * | X | Y | DMD | 2A | カーブ"メンセキ |
|---------|---------|--------------|----------|--------|---------|---|---------|---|-------------|------------|---------|------------|----------|
| 55BL-50 | 55BL-60 | | 183 3 10 | | | | | | -130740.434 | -68930.722 | | | |
| 55BL-60 | 55BL-61 | 90 0 0 | 93 3 10 | 14.884 | -0.793 | 0 | 14.863 | 0 | -130741.227 | -68915.859 | 13.663 | -10.834759 | |
| 55BL-61 | 55BL-49 | 90 0 0 | 3 3 10 | 22.532 | 22.500 | 0 | 1.200 | 0 | -130718.727 | -68914.659 | 29.726 | 668.835000 | |
| 55BL-49 | 55BL-50 | 89 59 22 273 | 2 32 | 14.884 | 0.790 | 0 | -14.863 | 0 | -130717.937 | -68929.522 | 16.063 | 12.689770 | |
| 55BL-50 | 55BL-60 | 90 0 38 183 | 3 10 | 22.529 | -22.497 | 0 | -1.200 | 0 | -130740.434 | -68930.722 | 0.000 | 0.000000 | |
| TOTAL.. | ソツカク"ウ= | 4 | 360 0 0 | 74.829 | 0.000 | 0 | 0.000 | 0 | | | ハイメンセキ= | 670.690011 | |
| | | | | | | | | | | | 1/2= | 335.34 | +0.00 |
| | | | | | | | | | | | メンセキ= | 335.34 | ✓ |

レイ NO... 55BL(5)✓

| | | | | | | | | | | | | | |
|---------|---------|--------------|----------|--------|---------|---|---------|---|-------------|------------|---------|------------|-------|
| 55BL-49 | 55BL-61 | | 183 3 10 | | | | | | -130741.227 | -68915.859 | | | |
| 55BL-61 | 55BL-62 | 90 0 0 | 93 3 10 | 16.221 | -0.864 | 0 | 16.198 | 0 | -130742.091 | -68899.661 | 14.998 | -12.958272 | |
| 55BL-62 | 55BL-48 | 90 0 0 | 3 3 10 | 22.535 | 22.503 | 0 | 1.200 | 0 | -130719.588 | -68898.461 | 32.396 | 729.007188 | |
| 55BL-48 | 55BL-49 | 89 59 22 273 | 2 32 | 16.221 | 0.861 | 0 | -16.198 | 0 | -130718.727 | -68914.659 | 17.398 | 14.979678 | |
| 55BL-49 | 55BL-61 | 90 0 38 183 | 3 10 | 22.532 | -22.500 | 0 | -1.200 | 0 | -130741.227 | -68915.859 | 0.000 | 0.000000 | |
| TOTAL.. | ソツカク"ウ= | 4 | 360 0 0 | 77.509 | 0.000 | 0 | 0.000 | 0 | | | ハイメンセキ= | 731.028594 | |
| | | | | | | | | | | | 1/2= | 365.51 | +0.00 |
| | | | | | | | | | | | メンセキ= | 365.51 | ✓ |

*** メンセキ ケイサン (ハイオウキヨホウ) ***

チクメイ ... ミヤコタチク トチクカクセイリシキヨウ

レイ NO... 55BL(6) ✓

| NO. | NO. | ANGLE | AZIMUTH | LENGTH | DX | * | DY | * | X | Y | DMD | 2A | カーブメンセキ |
|---------|-----------|-----------|-------------|----------|---------|------|---------|-----|-------------|------------|---------|-------------|---------|
| 55BL-48 | 55BL-62 ✓ | | 183 3 10 | | | | | | -130742.091 | -68899.661 | | | |
| 55BL-62 | 55BL-47 ✓ | 90 0 0 | 93 3 10 ✓ | 36.610 ✓ | -1.950 | 0 | 36.558 | 0 | -130744.041 | -68863.103 | 35.358 | -68.948100 | |
| 55BL-47 | 55BL- 5 ✓ | 103 36 45 | 16 39 55 ✓ | 19.132 ✓ | 18.328 | 0 | 5.487 | 0 | -130725.713 | -68857.616 | 77.403 | 1418.642184 | |
| 55BL- 5 | 55BL- 6 ✓ | 127 46 57 | 324 26 52 ✓ | 5.053 ✓ | 4.111 | 0 | -2.938 | 0 | -130721.602 | -68860.554 | 79.952 | 328.682672 | |
| 55BL- 6 | 55BL-48 ✓ | 128 35 40 | 273 2 32 ✓ | 37.961 ✓ | 2.015 | -1 | -37.908 | 1 | -130719.588 | -68898.461 | 39.107 | 78.761498 | |
| 55BL-48 | 55BL-62 ✓ | 90 0 38 | 183 3 10 ✓ | 22.535 ✓ | -22.503 | 0 | -1.200 | 0 | -130742.091 | -68899.661 | 0.000 | 0.000000 | |
| TOTAL.. | ソツカクスウ= 5 | 540 0 0 | | 121.291 | 0.001 | -1 ✓ | -0.001 | 1 ✓ | | | ハイメンセキ= | 1757.138254 | |
| | | | | | | | | | | | 1/2= | 878.56 | +0.00 |
| | | | | | | | | | | | メンセキ= | 878.56 ✓ | |

レイ NO... 55BL(7) ✓

| | | | | | | | | | | | | | |
|---------|-----------|----------|------------|----------|---------|-----|---------|-----|-------------|------------|---------|-------------|-------|
| 55BL-63 | 55BL-46 ✓ | | 183 3 10 | | | | | | -130764.688 | -68898.245 | | | |
| 55BL-46 | 55BL- 3 ✓ | 90 0 0 | 93 3 10 ✓ | 25.287 ✓ | -1.347 | 0 | 25.251 | 0 | -130766.035 | -68872.994 | 24.053 | -32.399391 | |
| 55BL- 3 | 55BL- 4 ✓ | 142 33 4 | 55 36 14 ✓ | 5.041 ✓ | 2.848 | 0 | 4.160 | 0 | -130763.187 | -68868.834 | 53.464 | 152.265472 | |
| 55BL- 4 | 55BL-47 ✓ | 141 3 41 | 16 39 55 ✓ | 19.985 ✓ | 19.146 | 0 | 5.731 | 0 | -130744.041 | -68863.103 | 63.355 | 1212.994830 | |
| 55BL-47 | 55BL-63 ✓ | 76 23 15 | 273 3 10 ✓ | 33.992 ✓ | 1.810 | 1 | -33.944 | 0 | -130742.230 | -68897.047 | 35.142 | 63.642162 | |
| 55BL-63 | 55BL-46 ✓ | 90 0 0 | 183 3 10 ✓ | 22.490 ✓ | -22.458 | 0 | -1.198 | 0 | -130764.688 | -68898.245 | 0.000 | 0.000000 | |
| TOTAL.. | ソツカクスウ= 5 | 540 0 0 | | 106.795 | -0.001 | 1 ✓ | 0.000 | 0 ✓ | | | ハイメンセキ= | 1396.503073 | |
| | | | | | | | | | | | 1/2= | 698.25 | +0.00 |
| | | | | | | | | | | | メンセキ= | 698.25 ✓ | |

*** メンセキ ケイサン (ハイオウキヨホウ) ***

チクメイ ... ミヤコタチク トチクカクセイリシキヨウ

ペリ NO... 55BL(8)✓

| NO. | NO. | ANGLE | AZIMUTH | LENGTH | DX | * | DY | * | X | Y | DMD | 2A | カ-フメンセキ |
|---------|-----------|---------|-----------|---------|---------|----|---------|----|-------------|------------|---------|------------|---------|
| 55BL-61 | 55BL-45✓ | | 183 3 10 | | | | | | -130763.685 | -68917.057 | | | |
| 55BL-45 | 55BL-46✓ | 90 0 0 | 93 3 10✓ | 18.839✓ | -1.003 | 0 | 18.812 | 0 | -130764.688 | -68898.245 | 17.614 | -17.666842 | |
| 55BL-46 | 55BL-63✓ | 90 0 0 | 3 3 10✓ | 22.490✓ | 22.458 | 0 | 1.198 | 0 | -130742.230 | -68897.047 | 37.624 | 844.959792 | |
| 55BL-63 | 55BL-61✓ | 90 0 0 | 273 3 10✓ | 18.839✓ | 1.003 | 0 | -18.812 | 0 | -130741.227 | -68915.859 | 20.010 | 20.070030 | |
| 55BL-61 | 55BL-45✓ | 90 0 0 | 183 3 10✓ | 22.490✓ | -22.458 | 0 | -1.198 | 0 | -130763.685 | -68917.057 | 0.000 | 0.000000 | |
| TOTAL.. | ソツカクスク= 4 | 360 0 0 | | 82.658 | 0.000 | 0✓ | 0.000 | 0✓ | | | ハイメンセキ= | 847.362980 | |
| | | | | | | | | | | | 1/2= | 423.68 | +0.00 |
| | | | | | | | | | | | メンセキ= | 423.68 ✓ | |

ペリ NO... 55BL(9)✓

| | | | | | | | | | | | | | |
|---------|-----------|---------|-----------|---------|---------|----|---------|----|-------------|------------|---------|------------|-------|
| 55BL-59 | 55BL-44✓ | | 183 3 10 | | | | | | -130762.623 | -68936.966 | | | |
| 55BL-44 | 55BL-45✓ | 90 0 0 | 93 3 10✓ | 19.937✓ | -1.062 | 0 | 19.909 | 0 | -130763.685 | -68917.057 | 18.711 | -19.871082 | |
| 55BL-45 | 55BL-61✓ | 90 0 0 | 3 3 10✓ | 22.490✓ | 22.458 | 0 | 1.198 | 0 | -130741.227 | -68915.859 | 39.818 | 894.232644 | |
| 55BL-61 | 55BL-59✓ | 90 0 0 | 273 3 10✓ | 19.937✓ | 1.062 | 0 | -19.909 | 0 | -130740.165 | -68935.768 | 21.107 | 22.415634 | |
| 55BL-59 | 55BL-44✓ | 90 0 0 | 183 3 10✓ | 22.490✓ | -22.458 | 0 | -1.198 | 0 | -130762.623 | -68936.966 | 0.000 | 0.000000 | |
| TOTAL.. | ソツカクスク= 4 | 360 0 0 | | 84.854 | 0.000 | 0✓ | 0.000 | 0✓ | | | ハイメンセキ= | 896.777196 | |
| | | | | | | | | | | | 1/2= | 448.38 | +0.00 |
| | | | | | | | | | | | メンセキ= | 448.38 ✓ | |

*** メンセキ ケイサン (ハ"イオウキヨホウ) ***

チクメイ ... ミヤコタ"チク トチクカクセイリシ"キ"ヨウ

セリ NO... 55BL(10) ✓

| NO. | NO. | ANGLE | AZIMUTH | | | LENGTH | DX | * | DY | * | X | Y | DMD | 2A | カ-フ"メンセキ |
|---------|-----------|---------|---------|---|------|----------|---------|-----|---------|-----|-------------|------------|----------|------------|----------|
| 55BL-57 | 55BL-43 ✓ | | 183 | 3 | 10 | | | | | | -130761.595 | -68956.248 | | | |
| 55BL-43 | 55BL-44 ✓ | 90 0 0 | 93 | 3 | 10 ✓ | 19.309 ✓ | -1.028 | 0 | 19.282 | 0 | -130762.623 | -68936.966 | 18.084 | -18.590352 | |
| 55BL-44 | 55BL-59 ✓ | 90 0 0 | 3 | 3 | 10 ✓ | 22.490 ✓ | 22.458 | 0 | 1.198 | 0 | -130740.165 | -68935.768 | 38.564 | 866.070312 | |
| 55BL-59 | 55BL-57 ✓ | 90 0 0 | 273 | 3 | 10 ✓ | 19.309 ✓ | 1.028 | 0 | -19.282 | 0 | -130739.137 | -68955.050 | 20.480 | 21.053440 | |
| 55BL-57 | 55BL-43 ✓ | 90 0 0 | 183 | 3 | 10 ✓ | 22.490 ✓ | -22.458 | 0 | -1.198 | 0 | -130761.595 | -68956.248 | 0.000 | 0.000000 | |
| TOTAL.. | ソツカクスウ= 4 | 360 0 0 | | | | 83.598 | 0.000 | 0 ✓ | 0.000 | 0 ✓ | | | ハ"イメンセキ= | 868.533400 | |
| | | | | | | | | | | | | | 1/2= | 434.26 | +0.00 |
| | | | | | | | | | | | | | メンセキ= | 434.26 ✓ | |

セリ NO... 55BL(11) ✓

| | | | | | | | | | | | | | | | |
|---------|-----------|---------|-----|---|------|----------|---------|-----|---------|-----|-------------|------------|----------|------------|-------|
| 55BL-56 | 55BL-42 ✓ | | 183 | 3 | 10 | | | | | | -130760.901 | -68969.270 | | | |
| 55BL-42 | 55BL-43 ✓ | 90 0 0 | 93 | 3 | 10 ✓ | 13.041 ✓ | -0.695 | 1 | 13.022 | 0 | -130761.595 | -68956.248 | 11.825 | -8.206550 | |
| 55BL-43 | 55BL-57 ✓ | 90 0 0 | 3 | 3 | 10 ✓ | 22.490 ✓ | 22.458 | 0 | 1.198 | 0 | -130739.137 | -68955.050 | 26.045 | 584.918610 | |
| 55BL-57 | 55BL-56 ✓ | 90 0 0 | 273 | 3 | 10 ✓ | 13.041 ✓ | 0.695 | -1 | -13.022 | -1 | -130738.443 | -68968.073 | 14.220 | 9.868680 | |
| 55BL-56 | 55BL-42 ✓ | 90 0 0 | 183 | 3 | 10 ✓ | 22.490 ✓ | -22.458 | 0 | -1.198 | 1 | -130760.901 | -68969.270 | 0.000 | 0.000000 | |
| TOTAL.. | ソツカクスウ= 4 | 360 0 0 | | | | 71.062 | 0.000 | 0 ✓ | 0.000 | 0 ✓ | | | ハ"イメンセキ= | 586.580740 | |
| | | | | | | | | | | | | | 1/2= | 293.29 | +0.00 |
| | | | | | | | | | | | | | メンセキ= | 293.29 ✓ | |

*** メンセキ ケイサン (ハイイウキヨホウ) ***

チクメイ ... ミヤコタチク トチクカクセイリヨキヨウ

セイリ NO... 55BL(12) ✓

| NO. | INO. | ANGLE | AZIMUTH | LENGTH | DX | * | DY | * | X | Y | DMD | 2A | カーブメンセキ |
|---------|------------|-----------|-------------|----------|--------|-----|---------|------|-------------|------------|----------|------------|---------|
| 55BL-28 | 55BL- 1 ✓ | | 182 17 28 | | | | | | -130756.705 | -68984.301 | | | |
| 55BL- 1 | 55BL- 2 ✓ | 133 27 46 | 135 45 14 ✓ | 4.998 ✓ | -3.580 | 0 | 3.487 | 0 | -130760.285 | -68980.814 | 3.259 | -11.667220 | |
| 55BL- 2 | 55BL-42 ✓ | 137 17 56 | 93 3 10 ✓ | 11.560 ✓ | -0.616 | 0 | 11.544 | 0 | -130760.901 | -68969.270 | 18.290 | -11.266640 | |
| 55BL-42 | 55BL-56 ✓ | 90 0 0 | 3 3 10 ✓ | 22.490 ✓ | 22.458 | 0 | 1.198 | -1 | -130738.443 | -68968.073 | 31.031 | 696.894198 | |
| 55BL-56 | 55BL-54 ✓ | 90 0 0 | 273 3 10 ✓ | 13.362 ✓ | 0.712 | 0 | -13.343 | 0 | -130737.731 | -68981.416 | 18.885 | 13.446120 | |
| 55BL-54 | 55BL-19 ✓ | 109 51 52 | 202 55 2 ✓ | 0.127 ✓ | -0.117 | 0 | -0.049 | 0 | -130737.848 | -68981.465 | 5.493 | -0.642681 | |
| 55BL-19 | 55BL-20 ✓ | 178 6 33 | 201 1 35 ✓ | 1.497 ✓ | -1.397 | 0 | -0.537 | 0 | -130739.245 | -68982.002 | 4.907 | -6.855079 | |
| 55BL-20 | 55BL-21 ✓ | 176 59 9 | 198 0 44 ✓ | 1.501 ✓ | -1.427 | 0 | -0.464 | 0 | -130740.672 | -68982.466 | 3.906 | -5.573862 | |
| 55BL-21 | 55BL-22 ✓ | 178 21 13 | 196 21 57 ✓ | 1.498 ✓ | -1.437 | 0 | -0.422 | 0 | -130742.109 | -68982.888 | 3.020 | -4.339740 | |
| 55BL-22 | 55BL-23 ✓ | 177 0 7 | 193 22 4 ✓ | 1.497 ✓ | -1.456 | 0 | -0.346 | 0 | -130743.565 | -68983.234 | 2.252 | -3.278912 | |
| 55BL-23 | 55BL-24 ✓ | 177 21 1 | 190 43 5 ✓ | 1.500 ✓ | -1.474 | 0 | -0.279 | 0 | -130745.039 | -68983.513 | 1.627 | -2.398198 | |
| 55BL-24 | 55BL-25 ✓ | 178 36 0 | 189 19 5 ✓ | 1.501 ✓ | -1.481 | 0 | -0.243 | 0 | -130746.520 | -68983.756 | 1.105 | -1.636505 | |
| 55BL-25 | 55BL-26 ✓ | 176 42 18 | 186 1 23 ✓ | 1.496 ✓ | -1.488 | 0 | -0.157 | 0 | -130748.008 | -68983.913 | 0.705 | -1.049040 | |
| 55BL-26 | 55BL-27 ✓ | 177 43 39 | 183 45 2 ✓ | 1.498 ✓ | -1.495 | 0 | -0.098 | 0 | -130749.503 | -68984.011 | 0.450 | -0.672750 | |
| 55BL-27 | 55BL-28 ✓ | 178 36 42 | 182 21 44 ✓ | 1.504 ✓ | -1.503 | 0 | -0.062 | 0 | -130751.006 | -68984.073 | 0.290 | -0.435870 | |
| 55BL-28 | 55BL- 1 ✓ | 179 55 44 | 182 17 28 ✓ | 5.704 ✓ | -5.699 | 0 | -0.228 | 0 | -130756.705 | -68984.301 | 0.000 | 0.000000 | |
| TOTAL.. | ソツカクスク= 15 | 2340 | 0 0 | 71.733 | 0.000 | 0 ✓ | 0.001 | -1 ✓ | | | ハイイメンセキ= | 660.523821 | |
| | | | | | | | | | | | 1/2= | 330.26 | +0.00 |
| | | | | | | | | | | | メンセキ= | 330.26 ✓ | |

チクメイ ... ミヤコタチク トチクカクセイリシキヨウ

| NO. | NO. | ANGLE | * | AZIMUTH | LENGTH | DX | * | DY | * | X | Y | NO. |
|---------|-----------|---------|---|------------|-----------|--------|------|----------|-----|-------------|------------|---------|
| | 55BL- 2 ✓ | | | | | | | | | -130760.285 | -68980.814 | 55BL- 2 |
| 55BL- 2 | 55BL-42 ✓ | | | 93 3 10 ✓ | 11.560 ✓ | -0.616 | 0 | 11.544 | 0 | -130760.901 | -68969.270 | 55BL-42 |
| 55BL-42 | 55BL-43 ✓ | 180 0 0 | | 93 3 10 ✓ | 13.041 ✓ | -0.695 | 1 | 13.022 | 0 | -130761.595 | -68956.248 | 55BL-43 |
| 55BL-43 | 55BL-44 ✓ | 180 0 0 | | 93 3 10 ✓ | 19.309 ✓ | -1.028 | 0 | 19.282 | 0 | -130762.623 | -68936.966 | 55BL-44 |
| 55BL-44 | 55BL-45 ✓ | 180 0 0 | | 93 3 10 ✓ | 19.937 ✓ | -1.062 | 0 | 19.909 | 0 | -130763.685 | -68917.057 | 55BL-45 |
| 55BL-45 | 55BL-46 ✓ | 180 0 0 | | 93 3 10 ✓ | 18.839 ✓ | -1.003 | 0 | 18.812 | 0 | -130764.688 | -68898.245 | 55BL-46 |
| 55BL-46 | 55BL- 3 ✓ | 180 0 0 | | 93 3 10 ✓ | 25.287 ✓ | -1.347 | 0 | 25.251 | 0 | -130766.035 | -68872.994 | 55BL- 3 |
| | TOTAL.. | 900 0 0 | | | 107.973 ✓ | -5.751 | 1 ✓ | 107.820 | 0 ✓ | | | |
| | 55BL- 4 ✓ | | | | | | | | | -130763.187 | -68868.834 | 55BL- 4 |
| 55BL- 4 | 55BL-47 ✓ | | | 16 39 55 ✓ | 19.985 ✓ | 19.146 | 0 | 5.731 | 0 | -130744.041 | -68863.103 | 55BL-47 |
| 55BL-47 | 55BL- 5 ✓ | 180 0 0 | | 16 39 55 ✓ | 19.132 ✓ | 18.328 | 0 | 5.487 | 0 | -130725.713 | -68857.616 | 55BL- 5 |
| | TOTAL.. | 180 0 0 | | | 39.117 ✓ | 37.474 | 0 ✓ | 11.218 | 0 ✓ | | | |
| | 55BL- 6 ✓ | | | | | | | | | -130721.602 | -68860.554 | 55BL- 6 |
| 55BL- 6 | 55BL-48 ✓ | | | 273 2 32 ✓ | 37.961 ✓ | 2.015 | -1 | -37.908 | 1 | -130719.588 | -68898.461 | 55BL-48 |
| 55BL-48 | 55BL-49 ✓ | 180 0 0 | | 273 2 32 ✓ | 16.221 ✓ | 0.861 | 0 | -16.198 | 0 | -130718.727 | -68914.659 | 55BL-49 |
| 55BL-49 | 55BL-50 ✓ | 180 0 0 | | 273 2 32 ✓ | 14.884 ✓ | 0.790 | 0 | -14.863 | 0 | -130717.937 | -68929.522 | 55BL-50 |
| 55BL-50 | 55BL-51 ✓ | 180 0 0 | | 273 2 32 ✓ | 5.053 ✓ | 0.268 | 0 | -5.046 | 0 | -130717.669 | -68934.568 | 55BL-51 |
| 55BL-51 | 55BL-52 ✓ | 180 0 0 | | 273 2 32 ✓ | 19.309 ✓ | 1.025 | 0 | -19.282 | -1 | -130716.644 | -68953.851 | 55BL-52 |
| 55BL-52 | 55BL- 7 ✓ | 180 0 0 | | 273 2 32 ✓ | 7.269 ✓ | 0.386 | 0 | -7.259 | 1 | -130716.258 | -68961.109 | 55BL- 7 |
| | TOTAL.. | 900 0 0 | | | 100.697 ✓ | 5.345 | -1 ✓ | -100.556 | 1 ✓ | | | |
| | 55BL-18 ✓ | | | | | | | | | -130736.469 | -68980.382 | 55BL-18 |

*** ケツコウ トラハス ***

チクメイ ... ミヤコタチク トチカクセイリシキヨウ

| NO. | NO. | ANGLE | * | AZIMUTH | LENGTH | DX | * | DY | * | X | Y | NO. |
|---------|-----------|---------|---|------------|-----------|--------|-----|---------|------|-------------|------------|---------|
| 55BL-18 | 55BL-54 ✓ | | | 202 55 2 ✓ | 1.370 ✓ | -1.262 | 0 | -0.533 | -1 | -130737.731 | -68981.416 | 55BL-54 |
| 55BL-54 | 55BL-19 ✓ | 180 0 0 | | 202 55 2 ✓ | 0.127 ✓ | -0.117 | 0 | -0.049 | 0 | -130737.848 | -68981.465 | 55BL-19 |
| | TOTAL.. | 180 0 0 | | | 1.497 ✓ | -1.379 | 0 ✓ | -0.582 | -1 ✓ | | | |
| | 55BL-54 ✓ | | | | | | | | | -130737.731 | -68981.416 | 55BL-54 |
| 55BL-54 | 55BL-57 ✓ | | | 93 3 10 ✓ | 26.403 ✓ | -1.406 | 0 | 26.366 | 0 | -130739.137 | -68955.050 | 55BL-57 |
| 55BL-57 | 55BL-59 ✓ | 180 0 0 | | 93 3 10 ✓ | 19.309 ✓ | -1.028 | 0 | 19.282 | 0 | -130740.165 | -68935.768 | 55BL-59 |
| 55BL-59 | 55BL-60 ✓ | 180 0 0 | | 93 3 10 ✓ | 5.053 ✓ | -0.269 | 0 | 5.046 | 0 | -130740.434 | -68930.722 | 55BL-60 |
| 55BL-60 | 55BL-61 ✓ | 180 0 0 | | 93 3 10 ✓ | 14.884 ✓ | -0.793 | 0 | 14.863 | 0 | -130741.227 | -68915.859 | 55BL-61 |
| 55BL-61 | 55BL-62 ✓ | 180 0 0 | | 93 3 10 ✓ | 16.221 ✓ | -0.864 | 0 | 16.198 | 0 | -130742.091 | -68899.661 | 55BL-62 |
| 55BL-62 | 55BL-47 ✓ | 180 0 0 | | 93 3 10 ✓ | 36.610 ✓ | -1.950 | 0 | 36.558 | 0 | -130744.041 | -68863.103 | 55BL-47 |
| | TOTAL.. | 900 0 0 | | | 118.480 ✓ | -6.310 | 0 ✓ | 118.313 | 0 ✓ | | | |
| | 55BL-54 ✓ | | | | | | | | | -130737.731 | -68981.416 | 55BL-54 |
| 55BL-54 | 55BL-56 ✓ | | | 93 3 10 ✓ | 13.362 ✓ | -0.712 | 0 | 13.343 | 0 | -130738.443 | -68968.073 | 55BL-56 |
| 55BL-56 | 55BL-57 ✓ | 180 0 0 | | 93 3 10 ✓ | 13.041 ✓ | -0.695 | 1 | 13.022 | 1 | -130739.137 | -68955.050 | 55BL-57 |
| 55BL-57 | 55BL-59 ✓ | 180 0 0 | | 93 3 10 ✓ | 19.309 ✓ | -1.028 | 0 | 19.282 | 0 | -130740.165 | -68935.768 | 55BL-59 |
| 55BL-59 | 55BL-61 ✓ | 180 0 0 | | 93 3 10 ✓ | 19.937 ✓ | -1.062 | 0 | 19.909 | 0 | -130741.227 | -68915.859 | 55BL-61 |
| 55BL-61 | 55BL-63 ✓ | 180 0 0 | | 93 3 10 ✓ | 18.839 ✓ | -1.003 | 0 | 18.812 | 0 | -130742.230 | -68897.047 | 55BL-63 |
| 55BL-63 | 55BL-47 ✓ | 180 0 0 | | 93 3 10 ✓ | 33.992 ✓ | -1.810 | -1 | 33.944 | 0 | -130744.041 | -68863.103 | 55BL-47 |
| | TOTAL.. | 900 0 0 | | | 118.480 ✓ | -6.310 | 0 ✓ | 118.312 | 1 ✓ | | | |
| | 55BL-54 ✓ | | | | | | | | | -130737.731 | -68981.416 | 55BL-54 |
| 55BL-54 | 55BL-56 ✓ | | | 93 3 10 ✓ | 13.362 ✓ | -0.712 | 0 | 13.343 | 0 | -130738.443 | -68968.073 | 55BL-56 |

チクメイ ... ミヤコタチク トチクカクセイリシキヨウ

| NO. | NO. | ANGLE * | AZIMUTH | LENGTH | DX * | DY * | X | Y | NO. |
|---------|-----------|----------|-----------|-----------|--------|---------|-------------|------------|---------|
| 55BL-56 | 55BL-57 ✓ | 180 0 0 | 93 3 10 ✓ | 13.041 ✓ | -0.695 | 13.022 | -130739.137 | -68955.050 | 55BL-57 |
| 55BL-57 | 55BL-59 ✓ | 180 0 0 | 93 3 10 ✓ | 19.309 ✓ | -1.028 | 19.282 | -130740.165 | -68935.768 | 55BL-59 |
| 55BL-59 | 55BL-60 ✓ | 180 0 0 | 93 3 10 ✓ | 5.053 ✓ | -0.269 | 5.046 | -130740.434 | -68930.722 | 55BL-60 |
| 55BL-60 | 55BL-61 ✓ | 180 0 0 | 93 3 10 ✓ | 14.884 ✓ | -0.793 | 14.863 | -130741.227 | -68915.859 | 55BL-61 |
| 55BL-61 | 55BL-62 ✓ | 180 0 0 | 93 3 10 ✓ | 16.221 ✓ | -0.864 | 16.198 | -130742.091 | -68899.661 | 55BL-62 |
| 55BL-62 | 55BL-63 ✓ | 180 0 0 | 93 3 10 ✓ | 2.618 ✓ | -0.139 | 2.614 | -130742.230 | -68897.047 | 55BL-63 |
| 55BL-63 | 55BL-47 ✓ | 180 0 0 | 93 3 10 ✓ | 33.992 ✓ | -1.810 | 33.944 | -130744.041 | -68863.103 | 55BL-47 |
| | TOTAL.. | 1260 0 0 | | 118.480 ✓ | -6.310 | 118.312 | | | |
| | 55BL-43 ✓ | | | | | | -130761.595 | -68956.248 | 55BL-43 |
| 55BL-43 | 55BL-57 ✓ | | 3 3 10 ✓ | 22.490 ✓ | 22.458 | 1.198 | -130739.137 | -68955.050 | 55BL-57 |
| 55BL-57 | 55BL-52 ✓ | 180 0 0 | 3 3 10 ✓ | 22.525 ✓ | 22.493 | 1.200 | -130716.644 | -68953.851 | 55BL-52 |
| | TOTAL.. | 180 0 0 | | 45.015 ✓ | 44.951 | 2.398 | | | |
| | 55BL-44 ✓ | | | | | | -130762.623 | -68936.966 | 55BL-44 |
| 55BL-44 | 55BL-59 ✓ | | 3 3 10 ✓ | 22.490 ✓ | 22.458 | 1.198 | -130740.165 | -68935.768 | 55BL-59 |
| 55BL-59 | 55BL-51 ✓ | 180 0 0 | 3 3 10 ✓ | 22.528 ✓ | 22.496 | 1.200 | -130717.669 | -68934.568 | 55BL-51 |
| | TOTAL.. | 180 0 0 | | 45.018 ✓ | 44.954 | 2.398 | | | |
| | 55BL-45 ✓ | | | | | | -130763.685 | -68917.057 | 55BL-45 |
| 55BL-45 | 55BL-61 ✓ | | 3 3 10 ✓ | 22.490 ✓ | 22.458 | 1.198 | -130741.227 | -68915.859 | 55BL-61 |
| 55BL-61 | 55BL-49 ✓ | 180 0 0 | 3 3 10 ✓ | 22.532 ✓ | 22.500 | 1.200 | -130718.727 | -68914.659 | 55BL-49 |
| | TOTAL.. | 180 0 0 | | 45.022 ✓ | 44.958 | 2.398 | | | |