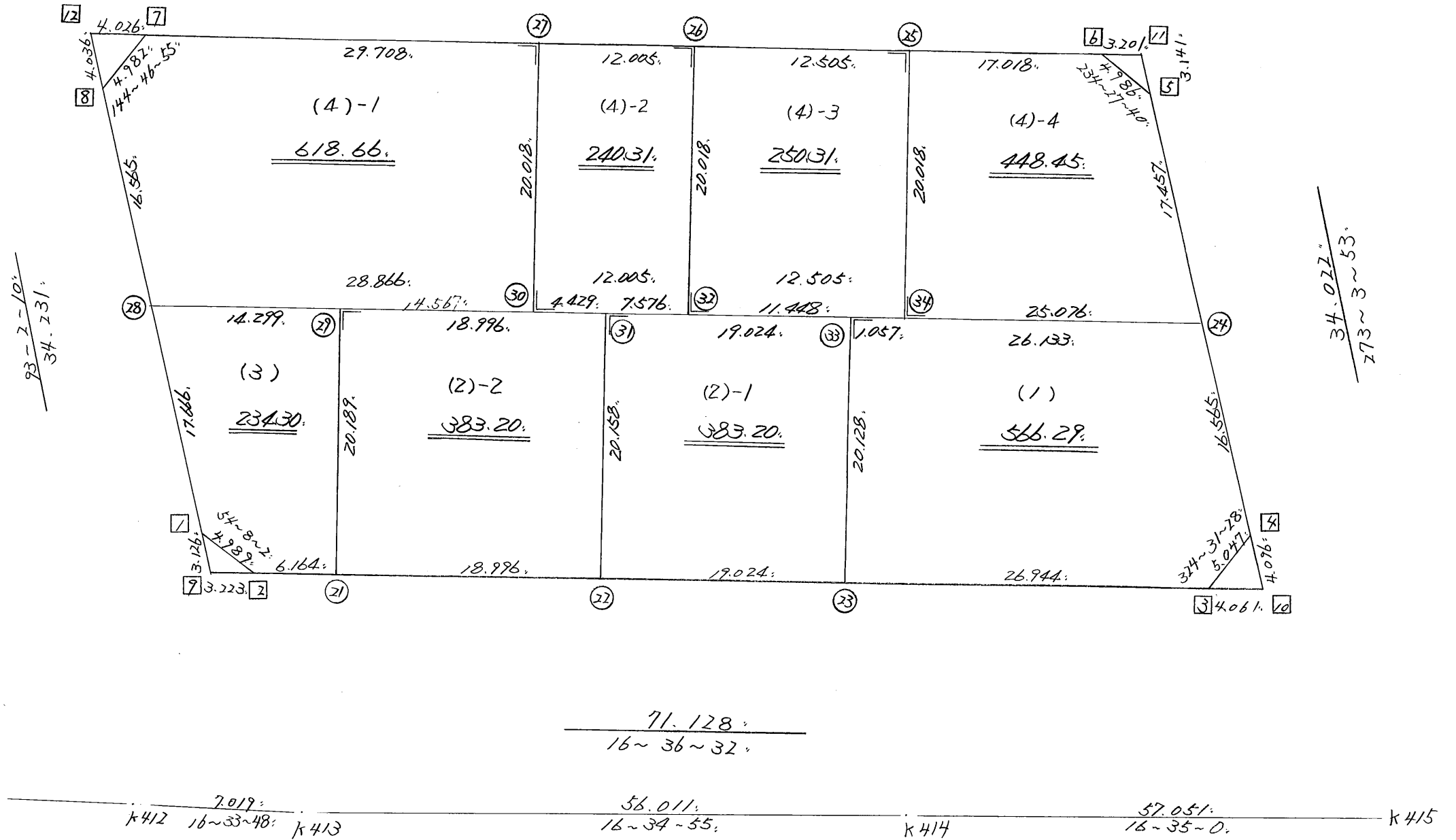


略 図

街区面積 = $\frac{311241.1761}{m^2}$
 画地面積 = $\frac{51244.212}{m^2}$



$\frac{196-42-2}{71.236}$



$\frac{71.128}{16-36-32}$

街区点番号 1 ~ 12, 筆界点番号 21 ~ 34, 画地番号 (1) ~ (4)

*** メンセキ ケイサン (ハイレウキヨホウ) ***

チクメイ ... ミヤコタチク トチクカクセイリシキヨウ

セイリ NO... 56BL

NO.	NO.	ANGLE	AZIMUTH	LENGTH	DX	*	DY	*	X	Y	DMD	2A	カ-フメンセキ
56BL- 8	56BL- 1		93 2 10						-130749.052	-68819.553			
56BL- 1	56BL- 2	141 5 52	54 8 2	4.989	2.923	0	4.043	0	-130746.129	-68815.510	38.226	111.734598	
56BL- 2	56BL- 3	142 28 30	16 36 32	71.128	68.160	0	20.331	0	-130677.969	-68795.179	62.600	4266.816000	
56BL- 3	56BL- 4	127 54 56	324 31 28	5.047	4.110	0	-2.929	0	-130673.859	-68798.108	80.002	328.808220	
56BL- 4	56BL- 5	128 32 25	273 3 53	34.022	1.819	0	-33.973	0	-130672.040	-68832.081	43.100	78.398900	
56BL- 5	56BL- 6	141 23 47	234 27 40	4.986	-2.898	0	-4.057	0	-130674.938	-68836.138	5.070	-14.692860	
56BL- 6	56BL- 7	142 14 22	196 42 2	71.236	-68.231	0	-20.471	0	-130743.169	-68856.609	-19.458	1327.638798	
56BL- 7	56BL- 8	128 4 53	144 46 55	4.982	-4.070	0	2.873	0	-130747.239	-68853.736	-37.056	150.817920	
56BL- 8	56BL- 1	128 15 15	93 2 10	34.231	-1.813	0	34.183	0	-130749.052	-68819.553	0.000	0.000000	
TOTAL..	ツツカクスク= 8	1080 0 0		230.621	0.000	0	0.000	0				6249.521576	
											1/2=	3124.76	+0.00
											メンセキ=	3124.76	

*** ムセキ ケイサン (ハ"イオウキヨホウ) ***

チクメイ ... ミヤコタ"チク トチクカクセイリシ"キ"ヨウ

セリ NO... 56BL(1)✓

NO.	NO.	ANGLE	AZIMUTH	LENGTH	DX	*	DY	*	X	Y	DMD	2A	カーブ"ムセキ
56BL-33	56BL-23✓		106 42 2						-130703.789	-68802.880			
56BL-23	56BL-3✓	89 54 30	16 36 32✓	26.944✓	25.820	0	7.702	-1	-130677.969	-68795.179	26.980	696.623600	
56BL-3	56BL-4✓	127 54 56	324 31 28✓	5.047✓	4.110	0	-2.929	0	-130673.859	-68798.108	31.752	130.500720	
56BL-4	56BL-24✓	128 32 25	273 3 53✓	16.565✓	0.886	0	-16.541	0	-130672.973	-68814.649	12.282	10.881852	
56BL-24	56BL-33✓	103 38 9	196 42 2✓	26.133✓	-25.031	0	-7.510	0	-130698.004	-68822.159	-11.769	294.589839	
56BL-33	56BL-23✓	90 0 0	106 42 2✓	20.128✓	-5.784	-1	19.279	0	-130703.789	-68802.880	0.000	0.000000	
TOTAL..	ソツカク入= 5	540 0 0		94.817	0.001	-1✓	0.001	-1✓			ハ"イムセキ=	1132.596011	
											1/2=	566.29	+0.00
											ムセキ=	566.29✓	

セリ NO... 56BL(2)-/✓

56BL-31	56BL-22✓		106 42 2						-130722.019	-68808.318			
56BL-22	56BL-23✓	89 54 30	16 36 32✓	19.024✓	18.230	0	5.438	0	-130703.789	-68802.880	24.746	451.119580	
56BL-23	56BL-33✓	90 5 30	286 42 2✓	20.128✓	5.784	1	-19.279	0	-130698.004	-68822.159	10.905	63.085425	
56BL-33	56BL-31✓	90 0 0	196 42 2✓	19.024✓	-18.222	0	-5.467	0	-130716.226	-68827.626	-13.841	252.210702	
56BL-31	56BL-22✓	90 0 0	106 42 2✓	20.158✓	-5.793	0	19.308	0	-130722.019	-68808.318	0.000	0.000000	
TOTAL..	ソツカク入= 4	360 0 0		78.334	-0.001	1✓	0.000	0✓			ハ"イムセキ=	766.415707	
											1/2=	383.20	+0.00
											ムセキ=	383.20✓	

*** ムンセキ ケイサン (ハ"イオウキヨホウ) ***

チクメイ ... ミヤコタ"チク トチクカクセイリヨ"キ"ヨウ

セリ NO... 56BL ⁽²⁾⁻² ~~(3)~~

NO.	NO.	ANGLE	AZIMUTH	LENGTH	DX	*	DY	*	X	Y	DMD	2A	カーブ"ムンセキ
56BL-29	56BL-21✓		106 42 2						-130740.222	-68813.748			
56BL-21	56BL-22✓	89 54 30	16 36 32✓	18.996✓	18.203	0	5.430	0	-130722.019	-68808.318	24.767	450.833701	
56BL-22	56BL-31✓	90 5 30	286 42 2✓	20.158✓	5.793	0	-19.308	0	-130716.226	-68827.626	10.889	63.079977	
56BL-31	56BL-29✓	90 0 0	196 42 2✓	18.996✓	-18.195	1	-5.459	0	-130734.420	-68833.085	-13.878	252.496332	
56BL-29	56BL-21✓	90 0 0	106 42 2✓	20.189✓	-5.802	0	19.337	0	-130740.222	-68813.748	0.000	0.000000	
TOTAL..	ソツカクスウ= 4	360 0 0		78.339	-0.001	1✓	0.000	0✓			ハ"イムンセキ=	766.410010	
											1/2=	383.20	+0.00
											ムンセキ=	383.20✓	

セリ NO... 56BL ⁽³⁾ ~~(4)~~

56BL-28	56BL- 1✓		93 2 10						-130749.052	-68819.553			
56BL- 1	56BL- 2✓	141 5 52	54 8 2✓	4.989✓	2.923	0	4.043	0	-130746.129	-68815.510	21.684	63.382332	
56BL- 2	56BL-21✓	142 28 30	16 36 32✓	6.164✓	5.907	0	1.762	0	-130740.222	-68813.748	27.489	162.377523	
56BL-21	56BL-29✓	90 5 30	286 42 2✓	20.189✓	5.802	0	-19.337	0	-130734.420	-68833.085	9.914	57.521028	
56BL-29	56BL-28✓	90 0 0	196 42 2✓	14.299✓	-13.696	0	-4.109	0	-130748.116	-68837.194	-13.532	185.334272	
56BL-28	56BL- 1✓	76 20 8	93 2 10✓	17.666✓	-0.936	0	17.641	0	-130749.052	-68819.553	0.000	0.000000	
TOTAL..	ソツカクスウ= 5	540 0 0		63.307	0.000	0✓	0.000	0✓			ハ"イムンセキ=	468.615155	
											1/2=	234.30	+0.00
											ムンセキ=	234.30✓	

*** ムセキ ケイサン (ハ"イオウキヨホウ) ***

チクメイ ... ミヤコタ"チク トチクカクセイリシ"キ"ヨウ

セリ NO... 56BL ^{(4)-1/1} ~~(5)~~

NO.	NO.	ANGLE	AZIMUTH			LENGTH	DX	*	DY	*	X	Y	DMD	2A	カーブ"ムセキ
56BL- 8	56BL-28✓		93	2	10						-130748.116	-68837.194			
56BL-28	56BL-30✓	103 39 52	16	42	2✓	28.866✓	27.648	1	8.295	0	-130720.467	-68828.899	24.837	686.718213	
56BL-30	56BL-27✓	90 0 0	286	42	2✓	20.018✓	5.753	0	-19.174	1	-130714.714	-68848.072	13.959	80.306127	
56BL-27	56BL- 7✓	90 0 0	196	42	2✓	29.708✓	-28.455	0	-8.537	0	-130743.169	-68856.609	-13.751	391.284705	
56BL- 7	56BL- 8✓	128 4 53	144	46	55✓	4.982✓	-4.070	0	2.873	0	-130747.239	-68853.736	-19.415	79.019050	
56BL- 8	56BL-28✓	128 15 15	93	2	10✓	16.565✓	-0.877	0	16.542	0	-130748.116	-68837.194	0.000	0.000000	
TOTAL..	ソツカクスク= 5	540 0 0				100.139	-0.001	1✓	-0.001	1✓			ハ"イムセキ=	1237.328095	
													1/2=	618.66	+0.00
													ムセキ=	618.66✓	

セリ NO... 56BL ^{(4)-2/1} ~~(5)~~

56BL-27	56BL-30✓		106	42	2						-130720.467	-68828.899			
56BL-30	56BL-32✓	90 0 0	16	42	2✓	12.005✓	11.499	0	3.450	0	-130708.968	-68825.449	22.623	260.141877	
56BL-32	56BL-26✓	90 0 0	286	42	2✓	20.018✓	5.753	0	-19.174	1	-130703.215	-68844.622	6.900	39.695700	
56BL-26	56BL-27✓	90 0 0	196	42	2✓	12.005✓	-11.499	0	-3.450	0	-130714.714	-68848.072	-15.723	180.798777	
56BL-27	56BL-30✓	90 0 0	106	42	2✓	20.018✓	-5.753	0	19.174	-1	-130720.467	-68828.899	0.000	0.000000	
TOTAL..	ソツカクスク= 4	360 0 0				64.046	0.000	0✓	0.000	0✓			ハ"イムセキ=	480.636354	
													1/2=	240.31	+0.00
													ムセキ=	240.31✓	

*** メンセキ ケイサン (ハ"イオウキヨホウ) ***

チクメイ ... ミヤコタ"チク トチクカクヒイリシ"キ"ヨウ

レイリ NO... 56BL ~~(7)~~ ^{(4)-3,}

NO.	NO.	ANGLE	AZIMUTH			LENGTH	DX	*	DY	*	X	Y	DMD	2A	カ-フ"メンセキ
56BL-26	56BL-32✓		106	42	2						-130708.968	-68825.449			
56BL-32	56BL-34✓	90 0 0	16	42	2✓	12.505✓	11.978	-1	3.594	0	-130696.991	-68821.855	22.767	272.680359	
56BL-34	56BL-25✓	90 0 0	286	42	2✓	20.018✓	5.753	0	-19.174	1	-130691.238	-68841.028	7.188	41.352564	
56BL-25	56BL-26✓	90 0 0	196	42	2✓	12.505✓	-11.978	1	-3.594	0	-130703.215	-68844.622	-15.579	186.589683	
56BL-26	56BL-32✓	90 0 0	106	42	2✓	20.018✓	-5.753	0	19.174	-1	-130708.968	-68825.449	0.000	0.000000	
TOTAL..	ソツカクスウ= 4	360 0 0				65.046	0.000	0✓	0.000	0✓			ハ"イメンセキ=	500.622606	
													1/2=	250.31	+0.00
													メンセキ=	250.31✓	

レイリ NO... 56BL ~~(8)~~ ^{(4)-4,}

56BL-25	56BL-34✓		106	42	2						-130696.991	-68821.855			
56BL-34	56BL-24✓	90 0 0	16	42	2✓	25.076✓	24.018	0	7.206	0	-130672.973	-68814.649	26.379	633.570822	
56BL-24	56BL- 5✓	76 21 51	273	3	53✓	17.457✓	0.933	0	-17.432	0	-130672.040	-68832.081	16.153	15.070749	
56BL- 5	56BL- 6✓	141 23 47	234	27	40✓	4.986✓	-2.898	0	-4.057	0	-130674.938	-68836.138	-5.336	15.463728	
56BL- 6	56BL-25✓	142 14 22	196	42	2✓	17.018✓	-16.300	0	-4.890	0	-130691.238	-68841.028	-14.283	232.812900	
56BL-25	56BL-34✓	90 0 0	106	42	2✓	20.018✓	-5.753	0	19.174	-1	-130696.991	-68821.855	0.000	0.000000	
TOTAL..	ソツカクスウ= 5	540 0 0				84.555	0.000	0	0.001	-1			ハ"イメンセキ=	896.918199	
													1/2=	448.45	+0.00
													メンセキ=	448.45✓	

*** ケツコウ トラバ-ス ***

チクメイ ... ミヤコタチク トチクカクセイリシキヨウ

NO.	NO.	ANGLE	*	AZIMUTH	LENGTH	DX	*	DY	*	X	Y	NO.
	56BL- 2✓									-130746.129	-68815.510	56BL- 2
56BL- 2	56BL-21✓			16 36 32✓	6.164✓	5.907	0	1.762	0	-130740.222	-68813.748	56BL-21
56BL-21	56BL-22✓	180 0 0		16 36 32✓	18.996✓	18.203	0	5.430	0	-130722.019	-68808.318	56BL-22
56BL-22	56BL-23✓	180 0 0		16 36 32✓	19.024✓	18.230	0	5.438	0	-130703.789	-68802.880	56BL-23
56BL-23	56BL- 3✓	180 0 0		16 36 32✓	26.944✓	25.820	0	7.702	-1	-130677.969	-68795.179	56BL- 3
	TOTAL..	540 0 0			71.128✓	68.160	0✓	20.332	-1✓			
	56BL- 4 ✓									-130673.859	-68798.108	56BL- 4
56BL- 4	56BL-24✓			273 3 53✓	16.565✓	0.886	0	-16.541	0	-130672.973	-68814.649	56BL-24
56BL-24	56BL- 5✓	180 0 0		273 3 53✓	17.457✓	0.933	0	-17.432	0	-130672.040	-68832.081	56BL- 5
	TOTAL..	180 0 0			34.022✓	1.819	0✓	-33.973	0✓			
	56BL- 6 ✓									-130674.938	-68836.138	56BL- 6
56BL- 6	56BL-25✓			196 42 2✓	17.018✓	-16.300	0	-4.890	0	-130691.238	-68841.028	56BL-25
56BL-25	56BL-26✓	180 0 0		196 42 2✓	12.505✓	-11.978	1	-3.594	0	-130703.215	-68844.622	56BL-26
56BL-26	56BL-27✓	180 0 0		196 42 2✓	12.005✓	-11.499	0	-3.450	0	-130714.714	-68848.072	56BL-27
56BL-27	56BL- 7✓	180 0 0		196 42 2✓	29.708✓	-28.455	0	-8.537	0	-130743.169	-68856.609	56BL- 7
	TOTAL..	540 0 0			71.236✓	-68.232	1✓	-20.471	0✓			
	56BL- 3✓									-130747.239	-68853.736	56BL- 8
56BL- 8	56BL-28✓			93 2 10✓	16.565	-0.877	0	16.542	0	-130748.116	-68837.194	56BL-28
56BL-28	56BL- 1✓	180 0 0		93 2 10✓	17.666	-0.936	0	17.641	0	-130749.052	-68819.553	56BL- 1
	TOTAL..	180 0 0			34.231✓	-1.813	0✓	34.183	0✓			

*** ケツコウ トラハ"-入 ***

チクメイ ... ミヤコタチク トチクカクセイリシ"キ"ヨウ

NO.	NO.	ANGLE	*	AZIMUTH	LENGTH	DX	*	DY	*	X	Y	NO.
	56BL-28✓									-130748.116	-68837.194	56BL-28
56BL-28	56BL-30✓			16 42 2✓	28.866✓	27.648	1	8.295	0	-130720.467	-68828.899	56BL-30
56BL-30	56BL-32✓	180 0 0		16 42 2✓	12.005✓	11.499	0	3.450	0	-130708.968	-68825.449	56BL-32
56BL-32	56BL-34✓	180 0 0		16 42 2✓	12.505✓	11.978	-1	3.594	0	-130696.991	-68821.855	56BL-34
56BL-34	56BL-24 ✓	180 0 0		16 42 2✓	25.076✓	24.018	0	7.206	0	-130672.973	-68814.649	56BL-24
	TOTAL..	540 0 0			78.452✓	75.143	0 ✓	22.545	0 ✓			
	56BL-28✓									-130748.116	-68837.194	56BL-28
56BL-28	56BL-29✓			16 42 2✓	14.299✓	13.696	0	4.109	0	-130734.420	-68833.085	56BL-29
56BL-29	56BL-31✓	180 0 0		16 42 2✓	18.996✓	18.195	-1	5.459	0	-130716.226	-68827.626	56BL-31
56BL-31	56BL-33✓	180 0 0		16 42 2✓	19.024✓	18.222	0	5.467	0	-130698.004	-68822.159	56BL-33
56BL-33	56BL-24 ✓	180 0 0		16 42 2✓	26.133✓	25.031	0	7.510	0	-130672.973	-68814.649	56BL-24
	TOTAL..	540 0 0			78.452✓	75.144	-1 ✓	22.545	0 ✓			
	56BL-28✓									-130748.116	-68837.194	56BL-28
56BL-28	56BL-29✓			16 42 2✓	14.299✓	13.696	0	4.109	0	-130734.420	-68833.085	56BL-29
56BL-29	56BL-30✓	180 0 0		16 42 2✓	14.567✓	13.953	0	4.186	0	-130720.467	-68828.899	56BL-30
56BL-30	56BL-31✓	180 0 0		16 42 2✓	4.429✓	4.242	-1	1.273	0	-130716.226	-68827.626	56BL-31
56BL-31	56BL-32✓	180 0 0		16 42 2✓	7.576✓	7.256	2	2.177	0	-130708.968	-68825.449	56BL-32
56BL-32	56BL-33✓	180 0 0		16 42 2✓	11.448✓	10.965	-1	3.290	0	-130698.004	-68822.159	56BL-33
56BL-33	56BL-34 ✓	180 0 0		16 42 2✓	1.057✓	1.012	1	0.304	0	-130696.991	-68821.855	56BL-34
56BL-34	56BL-24 ✓	180 0 0		16 42 2✓	25.076✓	24.018	0	7.206	0	-130672.973	-68814.649	56BL-24
	TOTAL..	1080 0 0			78.452✓	75.142	1 ✓	22.545	0 ✓			