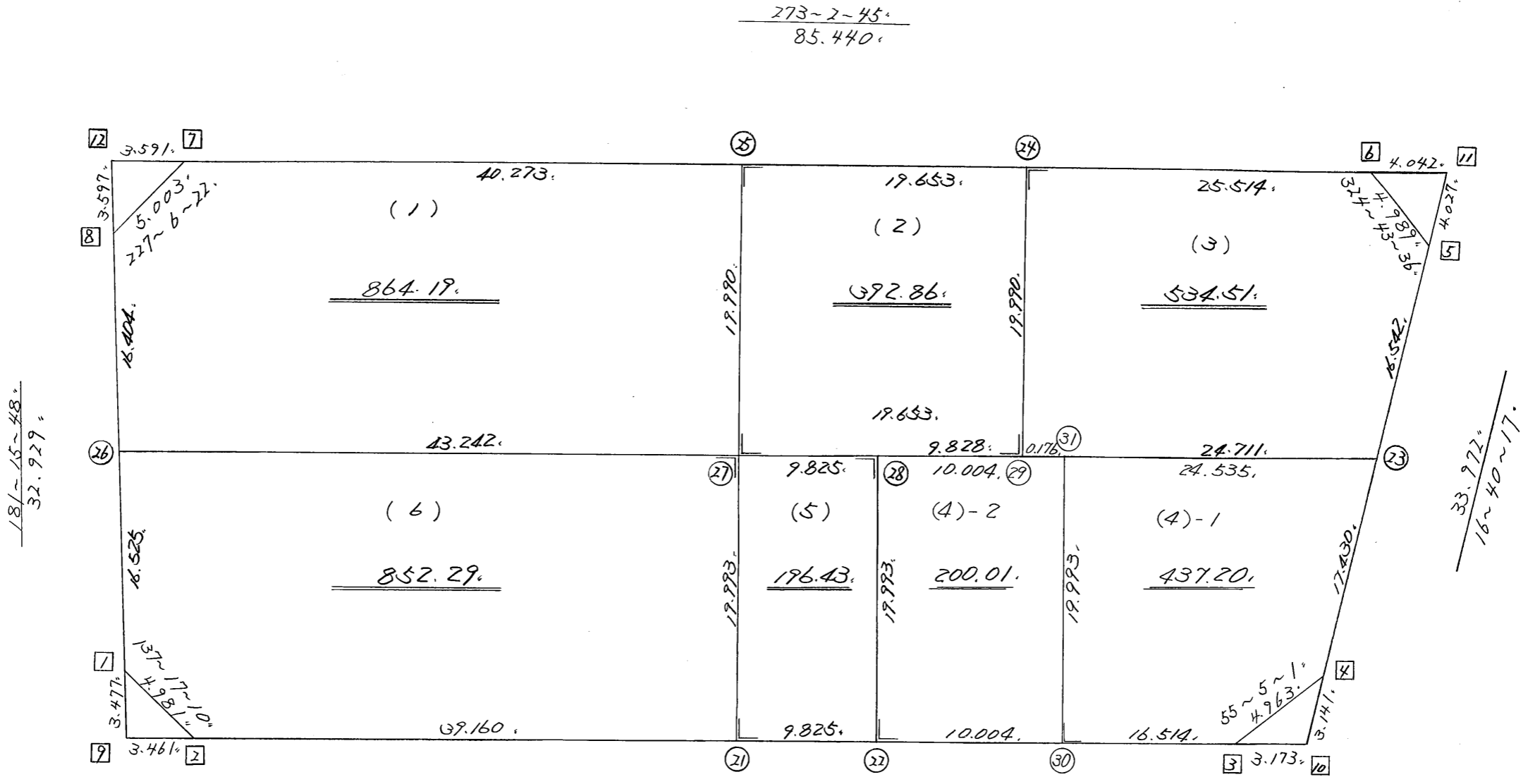


略 図

街区面積 = 31477.49<sup>m</sup><sub>2</sub>  
 画地面積 = 3477.49



街区点番号 1 ~ 12 , 筆界点番号 (21) ~ (31) , 画地番号 (1) ~ (6) .

\*\*\* メンセキ 計算 (ハイオウキヨホウ) \*\*\*

チクメイ ... ミヤコタチク トチクカクセイリシキヨウ

セイリ NO... 58BL✓

NO.	NO.	ANGLE	AZIMUTH	LENGTH	DX	*	DY	*	X	Y	DMD	2A	カーブメンセキ
58BL- 8	58BL- 1✓		181 15 48						-130803.673	-68965.266			
58BL- 1	58BL- 2✓	136 1 22	137 17 10✓	4.981✓	-3.660	0	3.379	0	-130807.333	-68961.887	2.653	-9.709980	
58BL- 2	58BL- 3✓	135 45 35	93 2 45✓	75.503✓	-4.012	0	75.396	0	-130811.345	-68886.491	81.428	-326.689136	
58BL- 3	58BL- 4✓	142 2 16	55 5 1✓	4.963✓	2.841	0	4.070	0	-130808.504	-68882.421	160.894	457.099854	
58BL- 4	58BL- 5✓	141 35 16	16 40 17✓	33.972✓	32.544	0	9.746	0	-130775.960	-68872.675	174.710	5685.762240	
58BL- 5	58BL- 6✓	128 3 19	324 43 36✓	4.989✓	4.073	0	-2.881	0	-130771.887	-68875.556	181.575	739.554975	
58BL- 6	58BL- 7✓	128 19 9	273 2 45✓	85.440✓	4.540	0	-85.319	0	-130767.347	-68960.875	93.375	423.922500	
58BL- 7	58BL- 8✓	134 3 37	227 6 22✓	5.003✓	-3.405	0	-3.665	0	-130770.752	-68964.540	4.391	-14.951355	
58BL- 8	58BL- 1✓	134 9 26	181 15 48✓	32.929✓	-32.921	0	-0.726	0	-130803.673	-68965.266	0.000	0.000000	
TOTAL..	ツツカクスタウ= 8	1080	0 0	247.780	0.000	0✓	0.000	0✓			ハイオウキヨホウ=	6954.989098	
											1/2=	3477.49	+0.00
											メンセキ=	3477.49✓	

\*\*\* ムンセキ ケイサン (ハイオウキヨホウ) \*\*\*

チクメイ ... ミヤコタチク トチクカクセイリシキヨウ

												セリ NO... 58BL(1)✓		カ-フムンセキ
NO.	NO.	ANGLE	AZIMUTH	LENGTH	DX	*	DY	*	X	Y	DMD	2A		
58BL- 8	58BL-26✓		181 15 48						-130787.152	-68964.902				
58BL-26	58BL-27✓	91 46 57	93 2 45✓	43.242✓	-2.298	1	43.181	0	-130789.449	-68921.721	42.819	-98.355243		
58BL-27	58BL-25✓	90 0 0	3 2 45✓	19.990✓	19.962	0	1.062	0	-130769.487	-68920.659	87.062	1737.931644		
58BL-25	58BL- 7✓	90 0 0	273 2 45✓	40.273✓	2.140	0	-40.216	0	-130767.347	-68960.875	47.908	102.523120		
58BL- 7	58BL- 8✓	134 3 37	227 6 22✓	5.003✓	-3.405	0	-3.665	0	-130770.752	-68964.540	4.027	-13.711935		
58BL- 8	58BL-26✓	134 9 26	181 15 48✓	16.404✓	-16.400	0	-0.362	0	-130787.152	-68964.902	0.000	0.000000		
TOTAL..	ソツカクスク= 5	540 0 0		124.912	-0.001	1✓	0.000	0✓			ハイムンセキ=	1728.387586		
											1/2=	864.19	+0.00	
											ムンセキ=	864.19✓		

												セリ NO... 58BL(2)✓		
58BL-25	58BL-27✓		183 2 45						-130789.449	-68921.721				
58BL-27	58BL-29✓	90 0 0	93 2 45✓	19.653✓	-1.044	-1	19.625	-1	-130790.494	-68902.097	18.562	-19.397290		
58BL-29	58BL-24✓	90 0 0	3 2 45✓	19.990✓	19.962	1	1.062	1	-130770.531	-68901.034	39.249	783.527787		
58BL-24	58BL-25✓	90 0 0	273 2 45✓	19.653✓	1.044	0	-19.625	0	-130769.487	-68920.659	20.687	21.597228		
58BL-25	58BL-27✓	90 0 0	183 2 45✓	19.990✓	-19.962	0	-1.062	0	-130789.449	-68921.721	0.000	0.000000		
TOTAL..	ソツカクスク= 4	360 0 0		79.286	0.000	0✓	0.000	0✓			ハイムンセキ=	785.727725		
											1/2=	392.86	+0.00	
											ムンセキ=	392.86✓		

\*\*\* メンセキ ケイサン (ハイオウキヨホウ) \*\*\*

チクメイ ... ミヤコタチク トチクカクセイリシキヨウ

レイ NO... 58BL(3)✓

NO.	NO.	ANGLE	AZIMUTH	LENGTH	DX	*	DY	*	X	Y	DMD	2A	カ-フメンセキ
58BL-24	58BL-29✓		183 2 45						-130790.494	-68902.097			
58BL-29	58BL-23✓	90 0 0	93 2 45✓	24.711✓	-1.313	0	24.676	0	-130791.807	-68877.421	23.613	-31.003869	
58BL-23	58BL- 5✓	103 37 32	16 40 17✓	16.542✓	15.847	0	4.746	0	-130775.960	-68872.675	53.035	840.445645	
58BL- 5	58BL- 6✓	128 3 19	324 43 36✓	4.989✓	4.073	0	-2.881	0	-130771.887	-68875.556	54.900	223.607700	
58BL- 6	58BL-24✓	128 19 9	273 2 45✓	25.514✓	1.356	0	-25.478	0	-130770.531	-68901.034	26.541	35.989596	
58BL-24	58BL-29✓	90 0 0	183 2 45✓	19.990✓	-19.962	-1	-1.062	-1	-130790.494	-68902.097	0.000	0.000000	
TOTAL..	ソツカクスウ= 5	540 0 0		91.746	0.001	-1✓	0.001	-1✓			ハイメンセキ=	1069.039072	
											1/2=	534.51	+0.00
											メンセキ=	534.51✓	

レイ NO... 58BL(4)✓

58BL-28	58BL-22✓		183 2 45						-130809.936	-68912.972			
58BL-22	58BL- 3✓	90 0 0	93 2 45✓	26.518✓	-1.409	0	26.481	0	-130811.345	-68886.491	25.419	-35.815371	
58BL- 3	58BL- 4✓	142 2 16	55 5 1✓	4.963✓	2.841	0	4.070	0	-130808.504	-68882.421	55.970	159.010770	
58BL- 4	58BL-23✓	141 35 16	16 40 17✓	17.430✓	16.697	0	5.000	0	-130791.807	-68877.421	65.040	1085.972880	
58BL-23	58BL-28✓	76 22 28	273 2 45✓	34.539✓	1.835	1	-34.490	1	-130789.971	-68911.910	35.551	65.271636	
58BL-28	58BL-22✓	90 0 0	183 2 45✓	19.993✓	-19.965	0	-1.062	0	-130809.936	-68912.972	0.000	0.000000	
TOTAL..	ソツカクスウ= 5	540 0 0		103.443	-0.001	1✓	-0.001	1✓			ハイメンセキ=	1274.439915	
											1/2=	637.21	+0.00
											メンセキ=	637.21✓	

\*\*\* メンセキ ケイサン (ハ"イオウキヨホウ) \*\*\*

チクメイ ... ミヤコタ"チク トチクカクセイツシ"キ"ヨウ

セリ NO... 58BL(4)-1 ✓

NO.	INO.	ANGLE	AZIMUTH	LENGTH	DX	*	DY	*	X	Y	DMD	2A	カ-フ"メ"セキ
58BL-31	58BL-30 ✓		183 2 45						-130810.468	-68902.982			
58BL-30	58BL-3 ✓	90 0 0	93 2 45 ✓	16.514 ✓	-0.877	0	16.491	0	-130811.345	-68886.491	15.429	-13.531233	
58BL-3	58BL-4 ✓	142 2 16	55 5 1 ✓	4.963 ✓	2.841	0	4.070	0	-130808.504	-68882.421	35.990	102.247590	
58BL-4	58BL-23 ✓	141 35 16	16 40 17 ✓	17.430 ✓	16.697	0	5.000	0	-130791.807	-68877.421	45.060	752.366820	
58BL-23	58BL-31 ✓	76 22 28	273 2 45 ✓	24.535 ✓	1.304	0	-24.500	1	-130790.503	-68901.920	25.561	33.331544	
58BL-31	58BL-30 ✓	90 0 0	183 2 45 ✓	19.993 ✓	-19.965	0	-1.062	0	-130810.468	-68902.982	0.000	0.000000	
TOTAL..	ソツカクスク= 5	540 0 0		83.435	0.000	0 ✓	-0.001	1 ✓				ハ"イ"メ"セキ= 874.414721	
												1/2= 437.20	+0.00
												メ"セキ= 437.20 ✓	

セリ NO... 58BL(4)-2 ✓

58BL-28	58BL-22 ✓		183 2 45						-130809.936	-68912.972			
58BL-22	58BL-30 ✓	90 0 0	93 2 45 ✓	10.004 ✓	-0.532	0	9.990	0	-130810.468	-68902.982	8.928	-4.749696	
58BL-30	58BL-31 ✓	90 0 0	3 2 45 ✓	19.993 ✓	19.965	0	1.062	0	-130790.503	-68901.920	19.980	398.900700	
58BL-31	58BL-28 ✓	90 0 0	273 2 45 ✓	10.004 ✓	0.532	0	-9.990	0	-130789.971	-68911.910	11.052	5.879664	
58BL-28	58BL-22 ✓	90 0 0	183 2 45 ✓	19.993 ✓	-19.965	0	-1.062	0	-130809.936	-68912.972	0.000	0.000000	
TOTAL..	ソツカクスク= 4	360 0 0		59.994	0.000	0 ✓	0.000	0 ✓				ハ"イ"メ"セキ= 400.030668	
												1/2= 200.01	+0.00
												メ"セキ= 200.01 ✓	

\*\*\* ムネキ ケイサン (ハ"イオウキヨホウ) \*\*\*

チクメイ ... ミヤコタ"チク トチクカクセイリシ"キ"ヨウ

レイリ NO... 58BL(5)✓

NO.	NO.	ANGLE	AZIMUTH	LENGTH	DX	*	DY	*	X	Y	DMD	2A	カ-フ"ムネキ
58BL-27	58BL-21✓		183 2 45						-130809.414	-68922.783			
58BL-21	58BL-22✓	90 0 0	93 2 45	9.825✓	-0.522	0	9.811	0	-130809.936	-68912.972	8.749	-4.566978	
58BL-22	58BL-28✓	90 0 0	3 2 45	19.993✓	19.965	0	1.062	0	-130789.971	-68911.910	19.622	391.753230	
58BL-28	58BL-27✓	90 0 0	273 2 45	9.825✓	0.522	0	-9.811	0	-130789.449	-68921.721	10.873	5.675706	
58BL-27	58BL-21✓	90 0 0	183 2 45	19.993✓	-19.965	0	-1.062	0	-130809.414	-68922.783	0.000	0.000000	
TOTAL..	ソツカクスウ= 4	360 0 0		59.636	0.000	0✓	0.000	0✓			ハ"イムネキ=	392.861958	
											1/2=	196.43	+0.00
											ムネキ=	196.43✓	

レイリ NO... 58BL(6)✓

58BL-26	58BL- 1✓		181 15 48						-130803.673	-68965.266			
58BL- 1	58BL- 2✓	136 1 22	137 17 10✓	4.981✓	-3.660	0	3.379	0	-130807.333	-68961.887	3.015	-11.034900	
58BL- 2	58BL-21✓	135 45 35	93 2 45✓	39.160✓	-2.081	0	39.105	-1	-130809.414	-68922.783	45.498	-94.681338	
58BL-21	58BL-27✓	90 0 0	3 2 45✓	19.993✓	19.965	0	1.062	0	-130789.449	-68921.721	85.664	1710.281760	
58BL-27	58BL-26✓	90 0 0	273 2 45✓	43.242✓	2.298	-1	-43.181	0	-130787.152	-68964.902	43.545	100.022865	
58BL-26	58BL- 1✓	88 13 3	181 15 48✓	16.525✓	-16.521	0	-0.364	0	-130803.673	-68965.266	0.000	0.000000	
TOTAL..	ソツカクスウ= 5	540 0 0		123.901	0.001	-1✓	0.001	-1✓			ハ"イムネキ=	1704.588387	
											1/2=	852.29	+0.00
											ムネキ=	852.29✓	

\*\*\* ケツコウ トラハース \*\*\*

チクメイ ... ミヤコタチク トチクカクセイリシキヨウ

NO.	NO.	ANGLE *	AZIMUTH	LENGTH	DX	DY	X	Y	NO.
	58BL- 2 ✓						-130807.333	-68961.887	58BL- 2
58BL- 2	58BL-21 ✓		93 2 45 ✓	39.160 ✓	-2.081	39.105	-130809.414	-68922.783	58BL-21
58BL-21	58BL-22 ✓	180 0 0	93 2 45 ✓	9.825 ✓	-0.522	9.811	-130809.936	-68912.972	58BL-22
58BL-22	58BL-30 ✓	180 0 0	93 2 45 ✓	10.004 ✓	-0.532	9.990	-130810.468	-68902.982	58BL-30
58BL-30	58BL- 3 ✓	180 0 0	93 2 45 ✓	16.514 ✓	-0.877	16.491	-130811.345	-68886.491	58BL- 3
	TOTAL...	540 0 0		75.503 ✓	-4.012	75.397			
	58BL- 4 ✓						-130808.504	-68882.421	58BL- 4
58BL- 4	58BL-23 ✓		16 40 17 ✓	17.430 ✓	16.697	5.000	-130791.807	-68877.421	58BL-23
58BL-23	58BL- 5 ✓	180 0 0	16 40 17 ✓	16.542 ✓	15.847	4.746	-130775.960	-68872.675	58BL- 5
	TOTAL...	180 0 0		33.972 ✓	32.544	9.746			
	58BL- 6 ✓						-130771.887	-68875.556	58BL- 6
58BL- 6	58BL-24 ✓		273 2 45 ✓	25.514 ✓	1.356	-25.478	-130770.531	-68901.034	58BL-24
58BL-24	58BL-25 ✓	180 0 0	273 2 45 ✓	19.653 ✓	1.044	-19.625	-130769.487	-68920.659	58BL-25
58BL-25	58BL- 7 ✓	180 0 0	273 2 45 ✓	40.273 ✓	2.140	-40.216	-130767.347	-68960.875	58BL- 7
	TOTAL...	360 0 0		85.440 ✓	4.540	-85.319			
	58BL- 8 ✓						-130770.752	-68964.540	58BL- 8
58BL- 8	58BL-26 ✓		181 15 48 ✓	16.404 ✓	-16.400	-0.362	-130787.152	-68964.902	58BL-26
58BL-26	58BL- 1 ✓	180 0 0	181 15 48 ✓	16.525 ✓	-16.521	-0.364	-130803.673	-68965.266	58BL- 1
	TOTAL...	180 0 0		32.929 ✓	-32.921	-0.726			
	58BL-26 ✓						-130787.152	-68964.902	58BL-26

\*\*\* ケツコウ トラバース \*\*\*

チクメイ . . . . ミヤコタチク トチクカケイリシキヨウ

NO.	NO.	ANGLE *	AZIMUTH	LENGTH	DX	*	DY	*	X	Y	NO.
58BL-26	58BL-27 ✓		93 2 45 ✓	43.242 ✓	-2.298	1	43.181	0	-130789.449	-68921.721	58BL-27
58BL-27	58BL-29 ✓	180 0 0	93 2 45 ✓	19.653 ✓	-1.044	-1	19.625	-1	-130790.494	-68902.097	58BL-29
58BL-29	58BL-23 ✓	180 0 0	93 2 45 ✓	24.711 ✓	-1.313	0	24.676	0	-130791.807	-68877.421	58BL-23
	TOTAL...	360 0 0		87.606 ✓	-4.655	0 ✓	87.482	-1 ✓			
	58BL-26 ✓								-130787.152	-68964.902	58BL-26
58BL-26	58BL-27 ✓		93 2 45 ✓	43.242 ✓	-2.298	1	43.181	0	-130789.449	-68921.721	58BL-27
58BL-27	58BL-28 ✓	180 0 0	93 2 45 ✓	9.825 ✓	-0.522	0	9.811	0	-130789.971	-68911.910	58BL-28
58BL-28	58BL-31 ✓	180 0 0	93 2 45 ✓	10.004 ✓	-0.532	0	9.990	0	-130790.503	-68901.920	58BL-31
58BL-31	58BL-23 ✓	180 0 0	93 2 45 ✓	24.535 ✓	-1.304	0	24.500	-1	-130791.807	-68877.421	58BL-23
	TOTAL...	540 0 0		87.606 ✓	-4.656	1 ✓	87.482	-1 ✓			
	58BL-26 ✓								-130787.152	-68964.902	58BL-26
58BL-26	58BL-27 ✓		93 2 45 ✓	43.242 ✓	-2.298	1	43.181	0	-130789.449	-68921.721	58BL-27
58BL-27	58BL-28 ✓	180 0 0	93 2 45 ✓	9.825 ✓	-0.522	0	9.811	0	-130789.971	-68911.910	58BL-28
58BL-28	58BL-29 ✓	180 0 0	93 2 45 ✓	9.828 ✓	-0.522	-1	9.814	-1	-130790.494	-68902.097	58BL-29
58BL-29	58BL-31 ✓	180 0 0	93 2 45 ✓	0.176 ✓	-0.009	0	0.176	1	-130790.503	-68901.920	58BL-31
58BL-31	58BL-23 ✓	180 0 0	93 2 45 ✓	24.535 ✓	-1.304	0	24.500	-1	-130791.807	-68877.421	58BL-23
	TOTAL...	720 0 0		87.606 ✓	-4.655	0 ✓	87.482	-1 ✓			
	58BL-21 ✓								-130809.414	-68922.783	58BL-21
58BL-21	58BL-27 ✓		3 2 45 ✓	19.993 ✓	19.965	0	1.062	0	-130789.449	-68921.721	58BL-27
58BL-27	58BL-25 ✓	180 0 0	3 2 45 ✓	19.990 ✓	19.962	0	1.062	0	-130769.487	-68920.659	58BL-25
	TOTAL...	180 0 0		39.983 ✓	39.927	0 ✓	2.124	0 ✓			