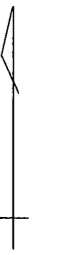


略 図

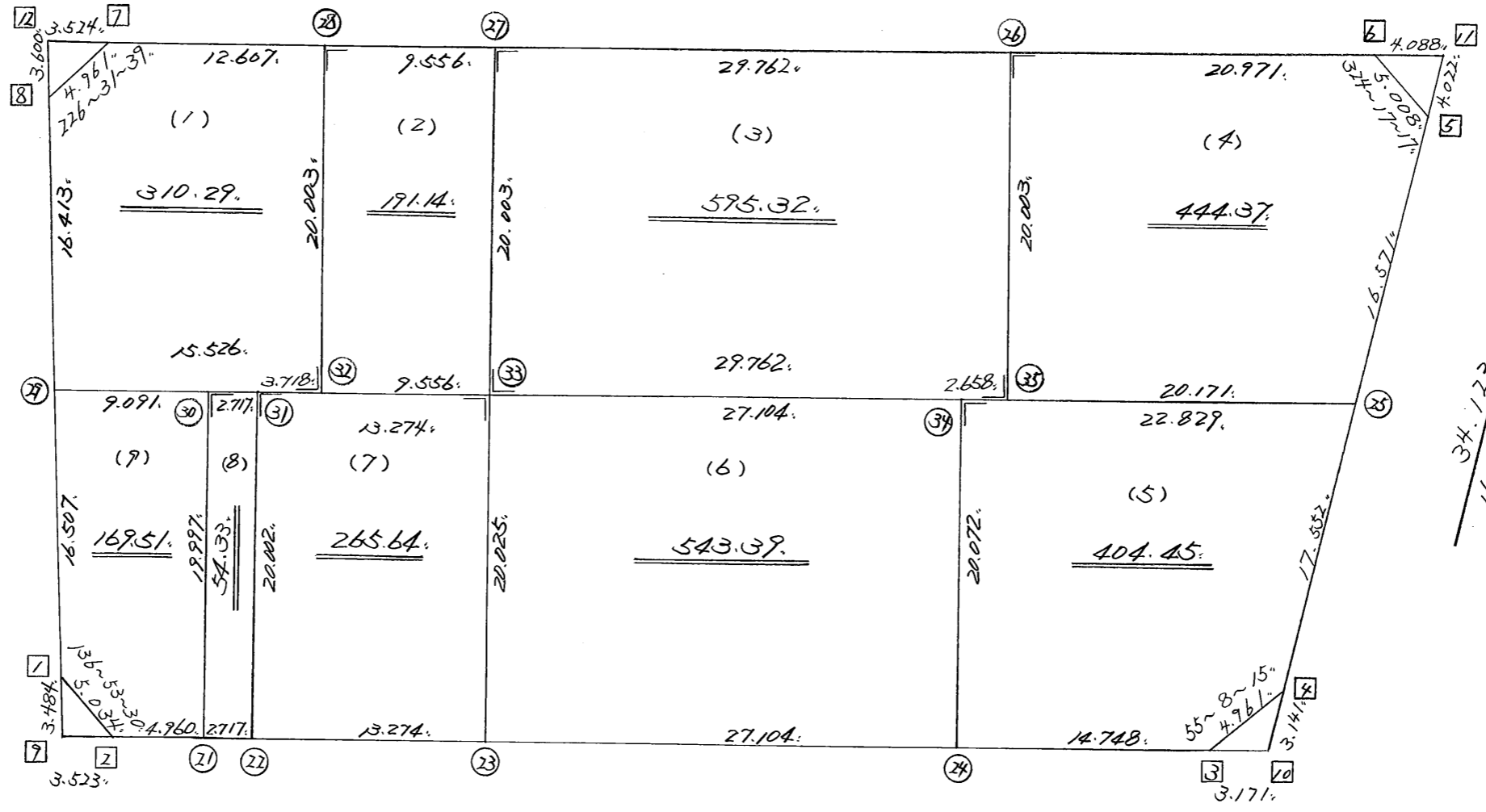
街区面積 = 2778.52 m²
 画地面積 = 2878.44



$\frac{273-1-11}{72.896}$

$\frac{181-16-52}{32.920}$

$\frac{34.123}{16-44-52}$



$\frac{62.803}{93-7-11}$

不二測量株式会社

街区点番号 1 ~ 12, 筆界点番号 (21) ~ (35), 画地番号 (1) ~ (9)

*** メンセキ ケイサン (ハイイウキヨホウ) ***

チクメイ ... ミヤコタチク トチクカクセイリシキヨウ

セイリ NO... 59BL✓

NO.	NO.	ANGLE	AZIMUTH	LENGTH	DX	*	DY	*	X	Y	DMD	2A	カ-フメンセキ
59BL- 8	59BL- 1✓		181 16 52						-130849.683	-68966.282			
59BL- 1	59BL- 2✓	135 36 38	136 53 30✓	5.034✓	-3.675	0	3.440	0	-130853.358	-68962.842	2.704	-9.937200	
59BL- 2	59BL- 3✓	136 13 41	93 7 11✓	62.803✓	-3.418	0	62.710	0	-130856.776	-68900.132	68.854	-235.342972	
59BL- 3	59BL- 4✓	142 1 4	55 8 15✓	4.961✓	2.836	0	4.071	0	-130853.940	-68896.061	135.635	384.660860	
59BL- 4	59BL- 5✓	141 36 37	16 44 52✓	34.123✓	32.676	0	9.833	0	-130821.264	-68886.228	149.539	4886.336364	
59BL- 5	59BL- 6✓	127 32 25	324 17 17✓	5.008✓	4.066	0	-2.923	0	-130817.198	-68889.151	156.449	636.121634	
59BL- 6	59BL- 7✓	128 43 54	273 1 11✓	72.896✓	3.840	0	-72.795	0	-130813.358	-68961.946	80.731	310.007040	
59BL- 7	59BL- 8✓	133 30 28	226 31 39✓	4.961✓	-3.413	0	-3.600	0	-130816.771	-68965.546	4.336	-14.798768	
59BL- 8	59BL- 1✓	134 45 13	181 16 52✓	32.920✓	-32.912	0	-0.736	0	-130849.683	-68966.282	0.000	0.000000	
TOTAL..	ソツカクスク= 8	1080	0 0	222.706	0.000	0✓	0.000	0✓			ハイイウキキ=	5957.046958	
											1/2=	2978.52	+0.00
											メンセキ=	2978.52✓	

*** メンセキ ケイサン (ハ"イオウキヨホウ) ***

チクメイ ... ミヤコタ"チク トチクカクセイリシ"キ"ヨウ

レイリ NO... 59BL(1)✓

NO.	NO.	ANGLE	AZIMUTH	LENGTH	DX	*	DY	*	X	Y	DMD	2A	カ-フ"メンセキ
59BL- 8	59BL-29✓		181 16 52						-130833.180	-68965.913			
59BL-29	59BL-32✓	91 44 19	93 1 11✓	15.526✓	-0.818	0	15.504	0	-130833.998	-68950.409	15.137	-12.382066	
59BL-32	59BL-28✓	90 0 0	3 1 11✓	20.003✓	19.975	1	1.054	-1	-130814.022	-68949.356	31.694	633.119344	
59BL-28	59BL- 7✓	90 0 0	273 1 11✓	12.607✓	0.664	0	-12.589	-1	-130813.358	-68961.946	20.157	13.384248	
59BL- 7	59BL- 8✓	133 30 28	226 31 39✓	4.961✓	-3.413	0	-3.600	0	-130816.771	-68965.546	3.967	-13.539371	
59BL- 8	59BL-29✓	134 45 13	181 16 52✓	16.413✓	-16.409	0	-0.367	0	-130833.180	-68965.913	0.000	0.000000	
TOTAL..	ツツカクスク= 5	540 0 0		69.510	-0.001	1✓	0.002	-2✓			ハ"イメ"セキ=	620.582155	
											1/2=	310.29	+0.00
											メ"セキ=	310.29✓	

レイリ NO... 59BL(2)✓

59BL-28	59BL-32✓		183 1 11						-130833.998	-68950.409			
59BL-32	59BL-33✓	90 0 0	93 1 11✓	9.556✓	-0.503	0	9.543	-1	-130834.501	-68940.867	8.489	-4.269967	
59BL-33	59BL-27✓	90 0 0	3 1 11✓	20.003✓	19.975	0	1.054	0	-130814.526	-68939.813	19.085	381.222875	
59BL-27	59BL-28✓	90 0 0	273 1 11✓	9.556✓	0.503	1	-9.543	0	-130814.022	-68949.356	10.596	5.340384	
59BL-28	59BL-32✓	90 0 0	183 1 11✓	20.003✓	-19.975	-1	-1.054	1	-130833.998	-68950.409	0.000	0.000000	
TOTAL..	ツツカクスク= 4	360 0 0		59.118	0.000	0✓	0.000	0✓			ハ"イメ"セキ=	382.293292	
											1/2=	191.14	+0.00
											メ"セキ=	191.14✓	

*** ムンセキ ケイサン (ハイイウキヨホウ) ***

チクメイ ... ミヤコタチク トチクカクセイリシキヨウ

セリ NO... 59BL(3)✓

NO.	NO.	ANGLE	AZIMUTH	LENGTH	DX	*	DY	*	X	Y	DMD	2A	カ-フムンセキ
59BL-27	59BL-33✓		183 1 11						-130834.501	-68940.867			
59BL-33	59BL-35✓	90 0 0	93 1 11✓	29.762✓	-1.568	0	29.721	0	-130836.069	-68911.146	28.667	-44.949856	
59BL-35	59BL-26✓	90 0 0	3 1 11✓	20.003✓	19.975	0	1.054	0	-130816.094	-68910.092	59.442	1187.353950	
59BL-26	59BL-27✓	90 0 0	273 1 11✓	29.762✓	1.568	0	-29.721	0	-130814.526	-68939.813	30.775	48.255200	
59BL-27	59BL-33✓	90 0 0	183 1 11✓	20.003✓	-19.975	0	-1.054	0	-130834.501	-68940.867	0.000	0.000000	
TOTAL..	ソツカクスウ= 4	360 0 0		99.530	0.000	0✓	0.000	0✓			ハイイウキヨホウ=	1190.659294	
											1/2=	595.32	+0.00
											ムンセキ=	595.32✓	

セリ NO... 59BL(4)✓

59BL-26	59BL-35✓		183 1 11						-130836.069	-68911.146			
59BL-35	59BL-25✓	90 0 0	93 1 11✓	20.171✓	-1.063	0	20.143	0	-130837.132	-68891.003	19.089	-20.291607	
59BL-25	59BL- 5✓	103 43 41	16 44 52✓	16.571✓	15.868	0	4.775	0	-130821.264	-68886.228	44.007	698.303076	
59BL- 5	59BL- 6✓	127 32 25	324 17 17✓	5.008✓	4.066	0	-2.923	0	-130817.198	-68889.151	45.859	186.462694	
59BL- 6	59BL-26✓	128 43 54	273 1 11✓	20.971✓	1.105	-1	-20.942	1	-130816.094	-68910.092	21.995	24.282480	
59BL-26	59BL-35✓	90 0 0	183 1 11✓	20.003✓	-19.975	0	-1.054	0	-130836.069	-68911.146	0.000	0.000000	
TOTAL..	ソツカクスウ= 5	540 0 0		82.724	0.001	-1✓	-0.001	1✓			ハイイウキヨホウ=	888.756643	
											1/2=	444.37	+0.00
											ムンセキ=	444.37✓	

*** ケツコウ トラハ"-入 ***

チクメイ ... ミヤコタチク トチクカクセイリヨキ"ヨウ

NO.	NO.	ANGLE	*	AZIMUTH	LENGTH	DX	*	DY	*	X	Y	NO.
	59BL- 2✓									-130853.358	-68962.842	59BL- 2
59BL- 2	59BL-21✓			93 7 11✓	4.960✓	-0.270	0	4.953	0	-130853.628	-68957.889	59BL-21
59BL-21	59BL-22✓	180 0 0		93 7 11✓	2.717✓	-0.148	0	2.713	0	-130853.776	-68955.176	59BL-22
59BL-22	59BL-23✓	180 0 0		93 7 11✓	13.274✓	-0.722	0	13.254	0	-130854.498	-68941.922	59BL-23
59BL-23	59BL-24✓	180 0 0		93 7 11✓	27.104✓	-1.475	0	27.064	0	-130855.973	-68914.858	59BL-24
59BL-24	59BL- 3✓	180 0 0		93 7 11✓	14.748✓	-0.803	0	14.726	0	-130856.776	-68900.132	59BL- 3
	TOTAL..	720 0 0			62.803✓	-3.418	0✓	62.710	0✓			
	59BL- 4✓									-130853.940	-68896.061	59BL- 4
59BL- 4	59BL-25✓			16 44 52✓	17.552✓	16.807	1	5.058	0	-130837.132	-68891.003	59BL-25
59BL-25	59BL- 5✓	180 0 0		16 44 52✓	16.571✓	15.868	0	4.775	0	-130821.264	-68886.228	59BL- 5
	TOTAL..	180 0 0			34.123✓	32.675	1✓	9.833	0✓			
	59BL- 6✓									-130817.198	-68889.151	59BL- 6
59BL- 6	59BL-26✓			273 1 11✓	20.971✓	1.105	-1	-20.942	1	-130816.094	-68910.092	59BL-26
59BL-26	59BL-27✓	180 0 0		273 1 11✓	29.762✓	1.568	0	-29.721	0	-130814.526	-68939.813	59BL-27
59BL-27	59BL-28✓	180 0 0		273 1 11✓	9.556✓	0.503	1	-9.543	0	-130814.022	-68949.356	59BL-28
59BL-28	59BL- 7✓	180 0 0		273 1 11✓	12.607✓	0.664	0	-12.589	-1	-130813.358	-68961.946	59BL- 7
	TOTAL..	540 0 0			72.896✓	3.840	0✓	-72.795	0✓			
	59BL- 8✓									-130816.771	-68965.546	59BL- 8
59BL- 8	59BL-29✓			181 16 52✓	16.413✓	-16.409	0	-0.367	0	-130833.180	-68965.913	59BL-29
59BL-29	59BL- 1✓	180 0 0		181 16 52✓	16.507✓	-16.503	0	-0.369	0	-130849.683	-68966.282	59BL- 1
	TOTAL..	180 0 0			32.920✓	-32.912	0✓	-0.736	0✓			

*** ケツコウ トライハス ***

チクメイ ... ミヤコタチク トチクカクセイリシキヨウ

NO.	NO.	ANGLE	*	AZIMUTH	LENGTH	DX	*	DY	*	X	Y	NO.
	59BL-29✓									-130833.180	-68965.913	59BL-29
59BL-29	59BL-32✓			93 1 11✓	15.526✓	-0.818	0	15.504	0	-130833.998	-68950.409	59BL-32
59BL-32	59BL-33✓	180 0 0		93 1 11✓	9.556✓	-0.503	0	9.543	-1	-130834.501	-68940.867	59BL-33
59BL-33	59BL-35✓	180 0 0		93 1 11✓	29.762✓	-1.568	0	29.721	0	-130836.069	-68911.146	59BL-35
59BL-35	59BL-25✓	180 0 0		93 1 11✓	20.171✓	-1.063	0	20.143	0	-130837.132	-68891.003	59BL-25
	TOTAL..	540 0 0			75.015✓	-3.952	0 ✓	74.911	-1 ✓			
	59BL-29✓									-130833.180	-68965.913	59BL-29
59BL-29	59BL-30✓			93 1 11✓	9.091✓	-0.479	0	9.078	0	-130833.659	-68956.835	59BL-30
59BL-30	59BL-31✓	180 0 0		93 1 11✓	2.717✓	-0.143	0	2.713	0	-130833.802	-68954.122	59BL-31
59BL-31	59BL-33✓	180 0 0		93 1 11✓	13.274✓	-0.699	0	13.256	-1	-130834.501	-68940.867	59BL-33
59BL-33	59BL-34✓	180 0 0		93 1 11✓	27.104✓	-1.428	0	27.066	1	-130835.929	-68913.800	59BL-34
59BL-34	59BL-25✓	180 0 0		93 1 11✓	22.829✓	-1.203	0	22.797	0	-130837.132	-68891.003	59BL-25
	TOTAL..	720 0 0			75.015✓	-3.952	0 ✓	74.910	0 ✓			
	59BL-29✓									-130833.180	-68965.913	59BL-29
59BL-29	59BL-30✓			93 1 11✓	9.091✓	-0.479	0	9.078	0	-130833.659	-68956.835	59BL-30
59BL-30	59BL-31✓	180 0 0		93 1 11✓	2.717✓	-0.143	0	2.713	0	-130833.802	-68954.122	59BL-31
59BL-31	59BL-32✓	180 0 0		93 1 11✓	3.718✓	-0.196	0	3.713	0	-130833.998	-68950.409	59BL-32
59BL-32	59BL-33✓	180 0 0		93 1 11✓	9.556✓	-0.503	0	9.543	-1	-130834.501	-68940.867	59BL-33
59BL-33	59BL-34✓	180 0 0		93 1 11✓	27.104✓	-1.428	0	27.066	1	-130835.929	-68913.800	59BL-34
59BL-34	59BL-35✓	180 0 0		93 1 11✓	2.658✓	-0.140	0	2.654	0	-130836.069	-68911.146	59BL-35
59BL-35	59BL-25✓	180 0 0		93 1 11✓	20.171✓	-1.063	0	20.143	0	-130837.132	-68891.003	59BL-25
	TOTAL..	1080 0 0			75.015✓	-3.952	0 ✓	74.910	0 ✓			

*** ケツコウ トラハース ***

チクメイ ... ミヤコタチク トチクカクセイリシキヨウ

NO.	NO.	ANGLE	*	AZIMUTH	LENGTH	DX	*	DY	*	X	Y	NO.
	59BL-27✓									-130814.526	-68939.813	59BL-27
59BL-27	59BL-33✓		183	1 11✓	20.003✓	-19.975	0	-1.054	0	-130834.501	-68940.867	59BL-33
59BL-33	59BL-23✓	180 0 0	183	1 11✓	20.025✓	-19.997	0	-1.055	0	-130854.498	-68941.922	59BL-23
	TOTAL..	180 0 0			40.028✓	-39.972	0	-2.109	0			

*** ムンセキ ケイサン (ハ"イオウキヨホウ) ***

チクメイ ... ミヤコタ"チク トチクカクセイリシ"キ"ヨウ

セリ NO... 59BL(5)✓

NO.	NO.	ANGLE	AZIMUTH			LENGTH	DX	*	DY	*	X	Y	DMD	2A	カ-フ"ムンセキ
59BL-34	59BL-24✓		183	1	11						-130855.973	-68914.858			
59BL-24	59BL-3✓	90 6 0	93	7	11✓	14.748✓	-0.803	0	14.726	0	-130856.776	-68900.132	13.668	-10.975404	
59BL-3	59BL-4✓	142 1 4	55	8	15✓	4.961✓	2.836	0	4.071	0	-130853.940	-68896.061	32.465	92.070740	
59BL-4	59BL-25✓	141 36 37	16	44	52✓	17.552✓	16.807	1	5.058	0	-130837.132	-68891.003	41.594	699.111952	
59BL-25	59BL-34✓	76 16 19	273	1	11✓	22.829✓	1.203	0	-22.797	0	-130835.929	-68913.800	23.855	28.697565	
59BL-34	59BL-24✓	90 0 0	183	1	11✓	20.072✓	-20.044	0	-1.057	-1	-130855.973	-68914.858	0.000	0.000000	
TOTAL..	ツツカク入ウ= 5	540 0 0				80.162	-0.001	1✓	0.001	-1✓			ハ"イムンセキ=	808.904853	
													1/2=	404.45 +0.00	
													ムンセキ=	404.45✓	

セリ NO... 59BL(6)✓

59BL-33	59BL-23✓		183	1	11						-130854.498	-68941.922		
59BL-23	59BL-24✓	90 6 0	93	7	11✓	27.104✓	-1.475	0	27.064	0	-130855.973	-68914.858	26.009	-38.363275
59BL-24	59BL-34✓	89 54 0	3	1	11✓	20.072✓	20.044	0	1.057	1	-130835.929	-68913.800	54.131	1085.001764
59BL-34	59BL-33✓	90 0 0	273	1	11✓	27.104✓	1.428	0	-27.066	-1	-130834.501	-68940.867	28.122	40.158216
59BL-33	59BL-23✓	90 0 0	183	1	11✓	20.025✓	-19.997	0	-1.055	0	-130854.498	-68941.922	0.000	0.000000
TOTAL..	ツツカク入ウ= 4	360 0 0				94.305	0.000	0✓	0.000	0✓			ハ"イムンセキ=	1086.796705
													1/2=	543.39 +0.00
													ムンセキ=	543.39✓

*** メンベキ ケイサン (ハイオウキヨホウ) ***

チクメイ ... ミヤコタチク トチクカクセイリヨキヨウ

セリ NO... 59BL(7)✓

NO.	NO.	ANGLE			AZIMUTH			LENGTH	DX	*	DY	*	X	Y	DMD	2A	カ-フメンベキ
59BL-31	59BL-22✓				183	1	11						-130853.776	-68955.176			
59BL-22	59BL-23✓	90	6	0	93	7	11✓	13.274✓	-0.722	0	13.254	0	-130854.498	-68941.922	12.200	-8.808400	
59BL-23	59BL-33✓	89	54	0	3	1	11✓	20.025✓	19.997	0	1.055	0	-130834.501	-68940.867	26.509	530.100473	
59BL-33	59BL-31✓	90	0	0	273	1	11✓	13.274✓	0.699	0	-13.256	1	-130833.802	-68954.122	14.309	10.001991	
59BL-31	59BL-22✓	90	0	0	183	1	11✓	20.002✓	-19.974	0	-1.054	0	-130853.776	-68955.176	0.000	0.000000	
TOTAL..	ソツカクスク= 4	360	0	0				66.575	0.000	0✓	-0.001	1✓			ハイメンベキ=	531.294064	
															1/2=	265.64	+0.00
															メンベキ=	265.64✓	

セリ NO... 59BL(8)✓

59BL-30	59BL-21✓				183	1	11						-130853.628	-68957.889			
59BL-21	59BL-22✓	90	6	0	93	7	11✓	2.717✓	-0.148	0	2.713	0	-130853.776	-68955.176	1.659	-0.245532	
59BL-22	59BL-31✓	89	54	0	3	1	11✓	20.002✓	19.974	0	1.054	0	-130833.802	-68954.122	5.426	108.378924	
59BL-31	59BL-30✓	90	0	0	273	1	11✓	2.717✓	0.143	0	-2.713	0	-130833.659	-68956.835	3.767	0.538681	
59BL-30	59BL-21✓	90	0	0	183	1	11✓	19.997✓	-19.969	0	-1.053	-1	-130853.628	-68957.889	0.000	0.000000	
TOTAL..	ソツカクスク= 4	360	0	0				45.433	0.000	0✓	0.001	-1✓			ハイメンベキ=	108.672073	
															1/2=	54.33	+0.00
															メンベキ=	54.33✓	

*** 測点 位置 (ハイオウキヨウ) ***

チクメイ ... ミヤコタチク トチクカクセイリシキヨウ

レイ NO... 59BL(9) ✓

NO.	NO.	ANGLE	AZIMUTH	LENGTH	DX	*	DY	*	X	Y	DMD	2A	カ-フ"メジキ
59BL-29	59BL- 1 ✓		181 16 52						-130849.683	-68966.282			
59BL- 1	59BL- 2 ✓	135 36 38	136 53 30 ✓	5.034 ✓	-3.675	0	3.440	0	-130853.358	-68962.842	3.071	-11.285925	
59BL- 2	59BL-21 ✓	136 13 41	93 7 11 ✓	4.960 ✓	-0.270	0	4.953	0	-130853.628	-68957.889	11.464	-3.095280	
59BL-21	59BL-30 ✓	89 54 0	3 1 11 ✓	19.997 ✓	19.969	0	1.053	1	-130833.659	-68956.835	17.471	348.878399	
59BL-30	59BL-29 ✓	90 0 0	273 1 11 ✓	9.091 ✓	0.479	0	-9.078	0	-130833.180	-68965.913	9.447	4.525113	
59BL-29	59BL- 1 ✓	88 15 41	181 16 52 ✓	16.507 ✓	-16.503	0	-0.369	0	-130849.683	-68966.282	0.000	0.000000	
TOTAL..	ソツカクズ = 5	540 0 0		55.589	0.000	0 ✓	-0.001	1 ✓			ハイメジキ =	339.022307	
											1/2 =	169.51	+0.00
											メジキ =	169.51 ✓	