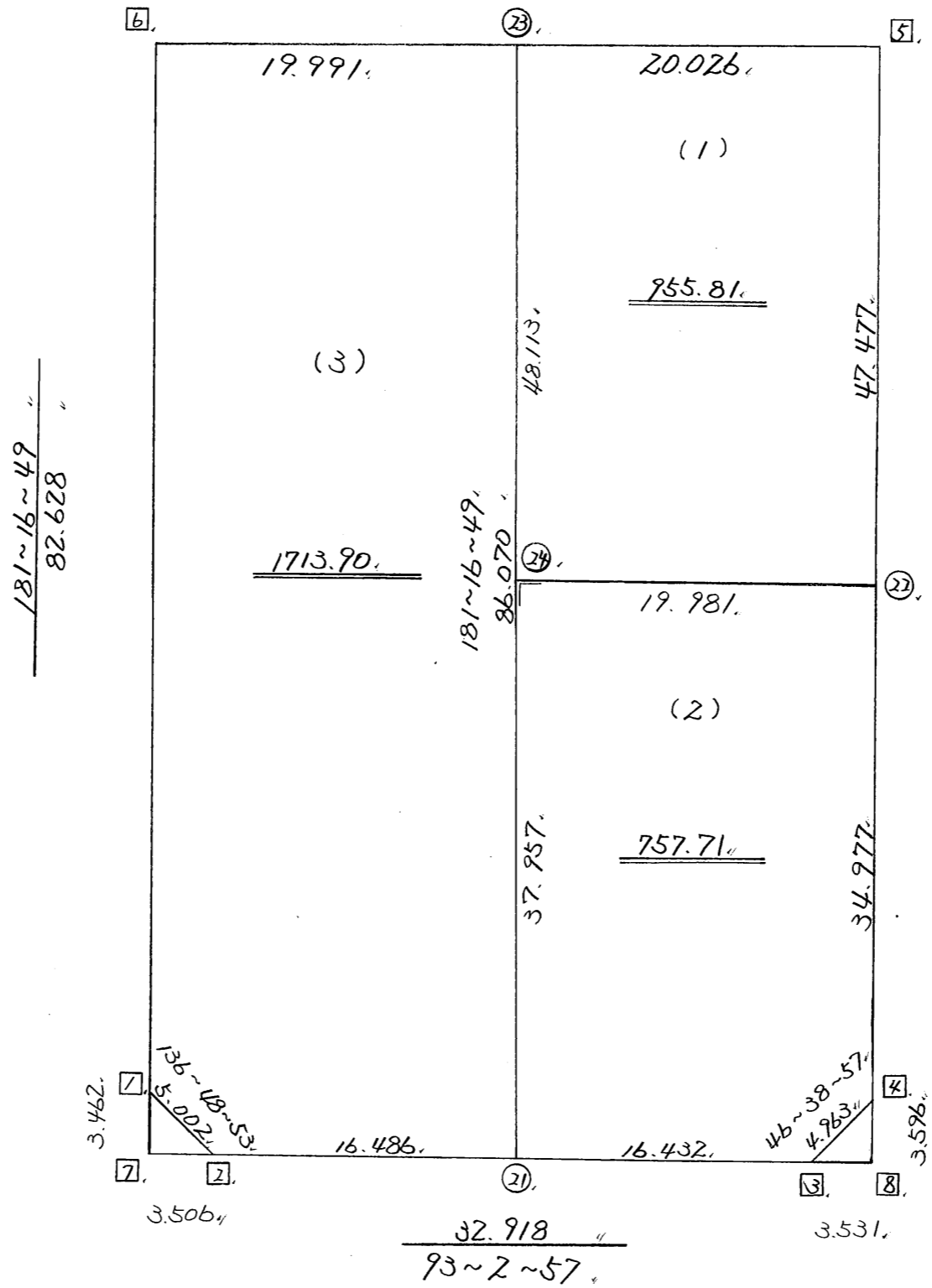


略 図

$\frac{273-6-10}{40.017}$

街区面積 =  $\frac{3427.44}{m^2}$   
画地面積 =  $\frac{3427.42}{m^2}$



\*\*\* メンセキ ケイサン (ハイオウキヨホウ) \*\*\*

チクメイ ... ミヤコタチク トチクカクセイリシキヨウ

セリ NO... 61BL

NO.	NO.	ANGLE	AZIMUTH	LENGTH	DX	*	DY	*	X	Y	DMD	2A	カ-フメンセキ
61BL- 6	61BL- 1		181 16 49						-130939.280	-69014.288			
61BL- 1	61BL- 2	135 32 4	136 48 53	5.002	-3.647	0	3.423	0	-130942.927	-69010.865	1.577	-5.751319	
61BL- 2	61BL- 3	136 14 4	93 2 57	32.918	-1.751	0	32.871	0	-130944.678	-68977.994	37.871	-66.312121	
61BL- 3	61BL- 4	133 36 0	46 38 57	4.963	3.407	0	3.609	0	-130941.271	-68974.385	74.351	253.313857	
61BL- 4	61BL- 5	134 40 19	1 19 16	82.454	82.432	0	1.901	0	-130858.839	-68972.484	79.861	6583.101952	
61BL- 5	61BL- 6	91 46 54	273 6 10	40.017	2.166	0	-39.958	0	-130856.673	-69012.442	41.804	90.547464	
61BL- 6	61BL- 1	88 10 39	181 16 49	82.628	-82.607	0	-1.846	0	-130939.280	-69014.288	0.000	0.000000	
TOTAL..	ソツカク入ウ= 6	720 0 0		247.982	0.000	0	0.000	0			ハイメンセキ=	6854.899833	
											1/2=	3427.44	+0.00
											メンセキ=	3427.44	

\*\*\* メンセキ ケイサン (ハイオウキヨホウ) \*\*\*

チクメイ ... ミヤコタチク トチクカクセイリシキヨウ

											ペリ NO... 61BL(1)						
NO.	NO.	ANGLE			AZIMUTH			LENGTH	DX	*	DY	*	X	Y.	DMD	2A	カ-フメンセキ
61BL-23✓	61BL-24				181 16 49								-130905.856	-68993.555			
61BL-24✓	61BL-22	90	0	0	91	16	49	19.981	-0.446	-1	19.976	0	-130906.303	-68973.579	18.901	-8.448747	
61BL-22✓	61BL- 5	90	2	27	1	19	16	47.477	47.464	0	1.095	0	-130858.839	-68972.484	39.972	1897.231008	
61BL- 5✓	61BL-23	91	46	54	273	6	10	20.026	1.084	0	-19.997	1	-130857.755	-68992.480	21.071	22.840964	
61BL-23✓	61BL-24	88	10	39	181	16	49	48.113	-48.101	0	-1.075	0	-130905.856	-68993.555	0.000	0.000000	
TOTAL..	ソツカクスウ=	4	360	0	0			135.597	0.001	-1	-0.001	1			ハイメンセキ=	1911.623225	
															1/2=	955.81	+0.00
															メンセキ=	955.81	

											ペリ NO... 61BL(2)						
61BL-24✓	61BL-21				181 16 49								-130943.804	-68994.403			
61BL-21✓	61BL- 3	91	46	8	93	2	57	16.432	-0.874	0	16.409	0	-130944.678	-68977.994	15.561	-13.600314	
61BL- 3✓	61BL- 4	133	36	0	46	38	57	4.963	3.407	0	3.609	0	-130941.271	-68974.385	35.579	121.217653	
61BL- 4✓	61BL-22	134	40	19	1	19	16	34.977	34.968	0	0.806	0	-130906.303	-68973.579	39.994	1398.510192	
61BL-22✓	61BL-24	89	57	33	271	16	49	19.981	0.446	1	-19.976	0	-130905.856	-68993.555	20.824	9.308328	
61BL-24✓	61BL-21	90	0	0	181	16	49	37.957	-37.948	0	-0.848	0	-130943.804	-68994.403	0.000	0.000000	
TOTAL..	ソツカクスウ=	5	540	0	0			114.310	-0.001	1	0.000	0			ハイメンセキ=	1515.435859	
															1/2=	757.71	+0.00
															メンセキ=	757.71	

\*\*\* メンセキ ケイサン (ハイオウキヨホウ) \*\*\*

チクメイ ... ミヤコタチク トチクカクセイリシキヨウ

セリ NO... 61BL(3)

NO.	NO.	ANGLE	AZIMUTH	LENGTH	DX	*	DY	*	X	Y	DMD	2A	カ-フメンセキ
61BL- 6	61BL- 1		181 16 49						-130939.280	-69014.288			
61BL- 1	61BL- 2	135 32 4	136 48 53	5.002	-3.647	0	3.423	0	-130942.927	-69010.865	1.577	-5.751319	
61BL- 2	61BL-21	136 14 4	93 2 57	16.486	-0.877	0	16.463	-1	-130943.804	-68994.403	21.462	-18.822174	
61BL-21	61BL-23	88 13 52	1 16 49	86.070	86.049	0	1.923	0	-130857.755	-68992.480	39.847	3428.794503	
61BL-23	61BL- 6	91 49 21	273 6 10	19.991	1.082	0	-19.962	0	-130856.673	-69012.442	21.808	23.596256	
61BL- 6	61BL- 1	88 10 39	181 16 49	82.628	-82.607	0	-1.846	0	-130939.280	-69014.288	0.000	0.000000	
TOTAL..	ソツカク入= 5	540 0 0		210.177	0.000	0	0.001	-1			ハイメンセキ=	3427.817266	
											1/2=	1713.90	+0.00
											メンセキ=	1713.90	

\*\*\* ケツコウ トラハス \*\*\*

チクメイ . . . ミヤコタチク トチクカクセイリシキヨウ

NO.	NO.	ANGLE	*	AZIMUTH	LENGTH	DX	*	DY	*	X	Y	NO.
	61BL- 2✓									-130942.927	-69010.865	61BL- 2
61BL- 2✓	61BL-21✓			93 2 57✓	16.486✓	-0.877	0	16.463	-1	-130943.804	-68994.403	61BL-21
61BL-21✓	61BL- 3✓	180 0 0		93 2 57✓	16.432✓	-0.874	0	16.409	0	-130944.678	-68977.994	61BL- 3
	TOTAL..	180 0 0			32.918✓	-1.751	0✓	32.872	-1✓			
	61BL- 4✓									-130941.271	-68974.385	61BL- 4
61BL- 4✓	61BL-22✓			1 19 16✓	34.977✓	34.968	0	0.806	0	-130906.303	-68973.579	61BL-22
61BL-22✓	61BL- 5✓	180 0 0		1 19 16✓	47.477✓	47.464	0	1.095	0	-130858.839	-68972.484	61BL- 5
	TOTAL..	180 0 0			82.454✓	82.432	0✓	1.901	0✓			
	61BL- 5✓									-130858.839	-68972.484	61BL- 5
61BL- 5✓	61BL-23✓			273 6 10✓	20.026✓	1.084	0	-19.997	1	-130857.755	-68992.480	61BL-23
61BL-23✓	61BL- 6✓	180 0 0		273 6 10✓	19.991✓	1.082	0	-19.962	0	-130856.673	-69012.442	61BL- 6
	TOTAL..	180 0 0			40.017✓	2.166	0✓	-39.959	1✓			
	61BL-23✓									-130857.755	-68992.480	61BL-23
61BL-23✓	61BL-24✓			181 16 49✓	48.113✓	-48.101	0	-1.075	0	-130905.856	-68993.555	61BL-24
61BL-24✓	61BL-21✓	180 0 0		181 16 49✓	37.957✓	-37.948	0	-0.848	0	-130943.804	-68994.403	61BL-21
	TOTAL..	180 0 0			86.070✓	-86.049	0✓	-1.923	0✓			