

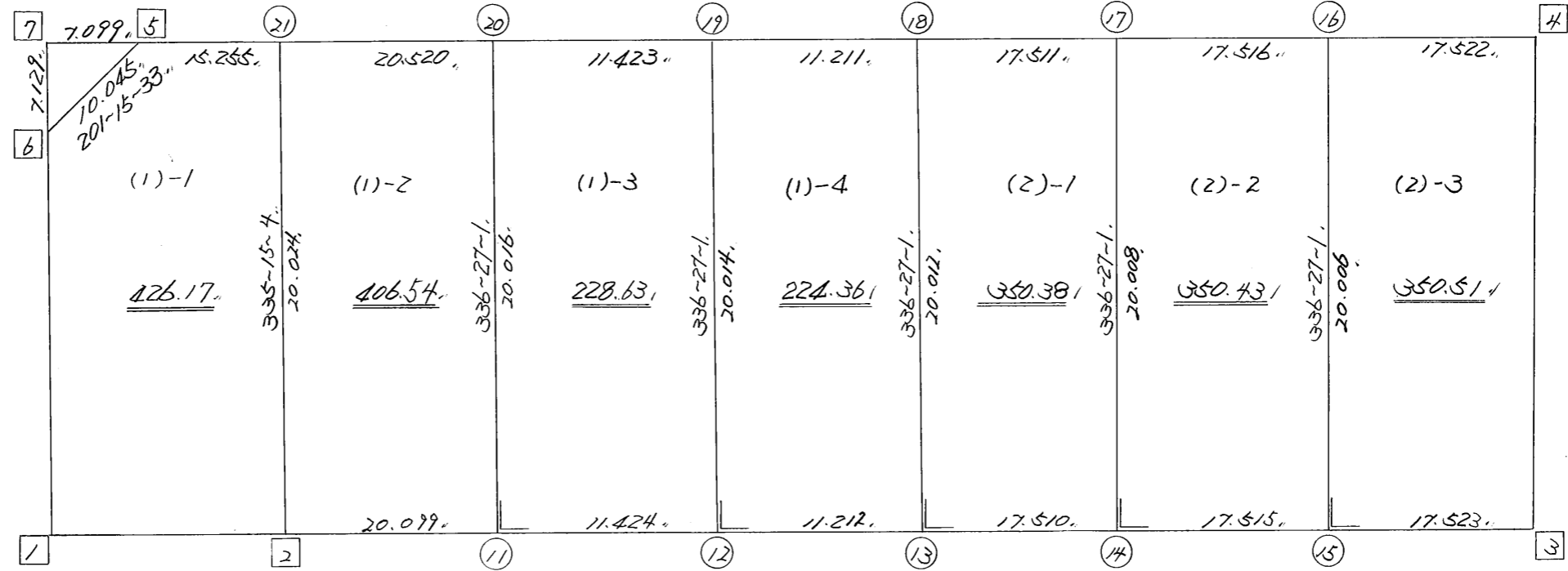
略 図

街区面積 =  $\frac{21337.01}{m^2}$   
 画地面積 =  $\frac{21337.02}{m^2}$

$\frac{246-28-23}{110.958}$

$\frac{156-17-10}{12.920}$

$\frac{20.002}{336-27-7}$



$\frac{22.716}{66-23-54}$

$\frac{85.283}{66-27-45}$

街区点番号 1 ~ 7 筆界点番号 11 ~ 21 画地番号 (1) ~ (2)

\*\*\* メンセキ ケイサン (ハイオウキヨホウ) \*\*\*

チクメイ ... ミヤコタチク トチクカクセイリシキヨウ

NO.	NO.	ANGLE	AZIMUTH	LENGTH	DX	*	DY	*	X	Y	DMD	2A	カ-フメンセキ
68BL- 6	68BL- 1✓		156 17 10						-130838.983	-69234.755			
68BL- 1	68BL- 2✓	90 6 44	66 23 54✓	22.716✓	9.095	0	20.816	0	-130829.888	-69213.939	26.012	236.579140	
68BL- 2	68BL- 3✓	180 3 51	66 27 45✓	95.283✓	38.051	0	87.355	0	-130791.837	-69126.584	134.183	5105.797333	
68BL- 3	68BL- 4✓	89 59 22	336 27 7✓	20.002✓	18.336	0	-7.991	0	-130773.501	-69134.575	213.547	3915.597792	
68BL- 4	68BL- 5✓	90 1 16	246 28 23✓	110.958✓	-44.292	0	-101.734	0	-130817.793	-69236.309	103.822	-4598.484024	
68BL- 5	68BL- 6✓	134 47 10	201 15 33✓	10.045✓	-9.361	0	-3.642	0	-130827.154	-69239.951	-1.554	14.546994	
68BL- 6	68BL- 1✓	135 1 37	156 17 10✓	12.920✓	-11.829	0	5.196	0	-130838.983	-69234.755	0.000	0.000000	
TOTAL...	ソツカクスク= 6	720 0 0		271.924	0.000	0✓	0.000	0✓			ハイメンセキ=	4674.037235	
											1/2=	2337.01	+0.00
											メンセキ=	2337.01✓	

\*\*\* メンセキ ケイサン (ハイオウキヨボウ) \*\*\*

チクメイ ... ミヤコタチク トチクカクセイリシキヨウ

セリ NO... 68BL(1)-1✓

NO.	NO.	ANGLE	AZIMUTH	LENGTH	DX	*	DY	*	X	Y	DMD	2A	カ-フメンセキ
68BL- 6	68BL- 1✓		156 17 10						-130838.983	-69234.755			
68BL- 1	68BL- 2✓	90 6 44	66 23 54✓	22.716✓	9.095	0	20.816	0	-130829.888	-69213.939	26.012	236.579140	
68BL- 2	68BL-21✓	88 51 10	335 15 4✓	20.024✓	18.185	0	-8.383	0	-130811.703	-69222.322	38.445	699.122325	
68BL-21	68BL- 5✓	91 13 19	246 28 23✓	15.255✓	-6.089	-1	-13.987	0	-130817.793	-69236.309	16.075	-97.896750	
68BL- 5	68BL- 6✓	134 47 10	201 15 33✓	10.045✓	-9.361	0	-3.642	0	-130827.154	-69239.951	-1.554	14.546994	
68BL- 6	68BL- 1✓	135 1 37	156 17 10✓	12.920✓	-11.829	0	5.196	0	-130838.983	-69234.755	0.000	0.000000	
TOTAL..	ソツカクスク= 5	540 0 0		80.960	0.001	-1✓	0.000	0✓			ハイメンセキ=	852.35170.9	
											1/2=	426.17	+0.00
											メンセキ=	426.17✓	

セリ NO... 68BL(1)-2✓

68BL-21	68BL- 2✓		155 15 4						-130829.888	-69213.939			
68BL- 2	68BL-11✓	91 12 41	66 27 45✓	20.099✓	8.027	0	18.427	0	-130821.861	-69195.512	26.810	215.203870	
68BL-11	68BL-20✓	89 59 16	336 27 1✓	20.016✓	18.349	0	-7.997	0	-130803.512	-69203.509	37.240	683.316760	
68BL-20	68BL-21✓	90 1 22	246 28 23✓	20.520✓	-8.191	0	-18.814	1	-130811.703	-69222.322	10.430	-85.432130	
68BL-21	68BL- 2✓	88 46 41	155 15 4✓	20.024✓	-18.185	0	8.383	0	-130829.888	-69213.939	0.000	0.000000	
TOTAL..	ソツカクスク= 4	360 0 0		80.659	0.000	0✓	-0.001	1✓			ハイメンセキ=	813.088500	
											1/2=	406.54	+0.00
											メンセキ=	406.54✓	

\*\*\* メンセキ ケイサン (ハイオウキヨホウ) \*\*\*

チクメイ ... ミヤコダチク トチクカクセイリシキヨウ

セリ NO... 68BL(1)-3 ✓

NO.	NO.	ANGLE	AZIMUTH	LENGTH	DX	*	DY	*	X	Y	DMD	2A	カ-フメンセキ
68BL-20	68BL-11 ✓		156 27 1						-130821.861	-69195.512			
68BL-11	68BL-12 ✓	90 0 44	66 27 45 ✓	11.424 ✓	4.562	0	10.474	-1	-130817.299	-69185.039	18.470	84.260140	
68BL-12	68BL-19 ✓	89 59 16	336 27 1 ✓	20.014 ✓	18.347	0	-7.996	0	-130798.952	-69193.035	20.947	384.314609	
68BL-19	68BL-20 ✓	90 1 22	246 28 23 ✓	11.423 ✓	-4.560	0	-10.473	-1	-130803.512	-69203.509	2.477	-11.295120	
68BL-20	68BL-11 ✓	89 58 38	156 27 1 ✓	20.016 ✓	-18.349	0	7.997	0	-130821.861	-69195.512	0.000	0.000000	
TOTAL..	ソツカクスウ= 4	360 0 0		62.877	0.000	0 ✓	0.002	-2 ✓			ハイメンセキ=	457.279629	
											1/2=	228.63	+0.00
											メンセキ=	228.63 ✓	

セリ NO... 68BL(1)-4 ✓

68BL-19	68BL-12 ✓		156 27 1						-130817.299	-69185.039			
68BL-12	68BL-13 ✓	90 0 44	66 27 45 ✓	11.212 ✓	4.478	-1	10.279	0	-130812.822	-69174.760	18.275	81.817175	
68BL-13	68BL-18 ✓	89 59 16	336 27 1 ✓	20.012 ✓	18.345	0	-7.996	0	-130794.477	-69182.756	20.558	377.136510	
68BL-18	68BL-19 ✓	90 1 22	246 28 23 ✓	11.211 ✓	-4.475	0	-10.279	0	-130798.952	-69193.035	2.283	-10.216425	
68BL-19	68BL-12 ✓	89 58 38	156 27 1 ✓	20.014 ✓	-18.347	0	7.996	0	-130817.299	-69185.039	0.000	0.000000	
TOTAL..	ソツカクスウ= 4	360 0 0		62.449	0.001	-1 ✓	0.000	0 ✓			ハイメンセキ=	448.737260	
											1/2=	224.36	+0.00
											メンセキ=	224.36 ✓	

\*\*\* メンセキ ケイサン (ハイオウキヨホウ) \*\*\*

チクメイ ... ミヤコタチク トチクカクセイリシキヨウ

セリ NO... 68BL(2)-1 ✓

NO.	NO.	ANGLE	AZIMUTH	LENGTH	DX	*	DY	*	X	Y	DMD	2A	カ-フメンセキ
68BL-18	68BL-13✓		156 27 1						-130812.822	-69174.760			
68BL-13	68BL-14✓	90 0 44	66 27 45✓	17.510✓	6.993	0	16.053	0	-130805.829	-69158.707	24.049	168.174657	
68BL-14	68BL-17✓	89 59 16	336 27 1✓	20.008✓	18.342	0	-7.994	0	-130787.487	-69166.701	32.108	588.924936	
68BL-17	68BL-18✓	90 1 22	246 28 23✓	17.511✓	-6.990	0	-16.055	0	-130794.477	-69182.756	8.059	-56.332410	
68BL-18	68BL-13✓	89 58 38	156 27 1✓	20.012✓	-18.345	0	7.996	0	-130812.822	-69174.760	0.000	0.000000	
TOTAL..	ソツカクスウ= 4	360 0 0		75.041	0.000	0✓	0.000	0✓			ハイメンセキ=	700.767183	
											1/2=	350.38	+0.00
											メンセキ=	350.38✓	

セリ NO... 68BL(2)-2 ✓

68BL-17	68BL-14✓		156 27 1						-130805.829	-69158.707			
68BL-14	68BL-15✓	90 0 44	66 27 45✓	17.515✓	6.995	-1	16.058	0	-130798.835	-69142.649	24.052	168.219688	
68BL-15	68BL-16✓	89 59 16	336 27 1✓	20.006✓	18.340	0	-7.993	1	-130780.495	-69150.641	32.118	589.044120	
68BL-16	68BL-17✓	90 1 22	246 28 23✓	17.516✓	-6.992	0	-16.060	0	-130787.487	-69166.701	8.066	-56.397472	
68BL-17	68BL-14✓	89 58 38	156 27 1✓	20.008✓	-18.342	0	7.994	0	-130805.829	-69158.707	0.000	0.000000	
TOTAL..	ソツカクスウ= 4	360 0 0		75.045	0.001	-1✓	-0.001	1✓			ハイメンセキ=	700.866336	
											1/2=	350.43	+0.00
											メンセキ=	350.43✓	

\*\*\* メンセキ ケイザン (ハ"イオウキヨホウ) \*\*\*

チクメイ ... ミヤコタ"チク トチクカクセイリシ"キ"ヨウ

セリ NO... 68BL(2)-3 ✓

NO.	NO.	ANGLE	AZIMUTH	LENGTH	DX	*	DY	*	X	Y	DMD	2A	カ-フ"メンセキ
68BL-16	68BL-15 ✓		156 27 1						-130798.835	-69142.649			
68BL-15	68BL- 3 ✓	90 0 44	66 27 45 ✓	17.523 ✓	6.998	0	16.065	0	-130791.837	-69126.584	24.057	168.350886	
68BL- 3	68BL- 4 ✓	89 59 22	336 27 7 ✓	20.002 ✓	18.336	0	-7.991	0	-130773.501	-69134.575	32.131	589.154016	
68BL- 4	68BL-16 ✓	90 1 16	246 28 23 ✓	17.522 ✓	-6.994	0	-16.065	-1	-130780.495	-69150.641	8.074	-56.469556	
68BL-16	68BL-15 ✓	89 58 38	156 27 1 ✓	20.006 ✓	-18.340	0	7.993	-1	-130798.835	-69142.649	0.000	0.000000	
TOTAL..	ソツカクスウ= 4	360 0 0		75.053	0.000	0 ✓	0.002	-2 ✓			ハイメンセキ=	701.035346	
											1/2=	350.51	+0.00
											メンセキ=	350.51 ✓	

\*\*\* ケツコウ トラハース \*\*\*

チクメイ ... ミヤコタチク トチクカクセイリシキヨウ

NO.	NO.	ANGLE	*	AZIMUTH	LENGTH	DX	*	DY	*	X	Y	NO.
	68BL- 2 ✓									-130829.888	-69213.939	68BL- 2
68BL- 2	68BL-11 ✓			66 27 45 ✓	20.099 ✓	8.027	0	18.427	0	-130821.861	-69195.512	68BL-11
68BL-11	68BL-12 ✓	180 0 0		66 27 45 ✓	11.424 ✓	4.562	0	10.474	-1	-130817.299	-69185.039	68BL-12
68BL-12	68BL-13 ✓	180 0 0		66 27 45 ✓	11.212 ✓	4.478	-1	10.279	0	-130812.822	-69174.760	68BL-13
68BL-13	68BL-14 ✓	180 0 0		66 27 45 ✓	17.510 ✓	6.993	0	16.053	0	-130805.829	-69158.707	68BL-14
68BL-14	68BL-15 ✓	180 0 0		66 27 45 ✓	17.515 ✓	6.995	-1	16.058	0	-130798.835	-69142.649	68BL-15
68BL-15	68BL- 3 ✓	180 0 0		66 27 45 ✓	17.523 ✓	6.998	0	16.065	0	-130791.837	-69126.584	68BL- 3
	TOTAL..	900 0 0			95.283 ✓	38.053	-2 ✓	87.356	-1 ✓			
	68BL- 4 ✓									-130773.501	-69134.575	68BL- 4
68BL- 4	68BL-16 ✓			246 28 23 ✓	17.522 ✓	-6.994	0	-16.065	-1	-130780.495	-69150.641	68BL-16
68BL-16	68BL-17 ✓	180 0 0		246 28 23 ✓	17.516 ✓	-6.992	0	-16.060	0	-130787.487	-69166.701	68BL-17
68BL-17	68BL-18 ✓	180 0 0		246 28 23 ✓	17.511 ✓	-6.990	0	-16.055	0	-130794.477	-69182.756	68BL-18
68BL-18	68BL-19 ✓	180 0 0		246 28 23 ✓	11.211 ✓	-4.475	0	-10.279	0	-130798.952	-69193.035	68BL-19
68BL-19	68BL-20 ✓	180 0 0		246 28 23 ✓	11.423 ✓	-4.560	0	-10.473	-1	-130803.512	-69203.509	68BL-20
68BL-20	68BL-21 ✓	180 0 0		246 28 23 ✓	20.520 ✓	-8.191	0	-18.814	1	-130811.703	-69222.322	68BL-21
68BL-21	68BL- 5 ✓	180 0 0		246 28 23 ✓	15.255 ✓	-6.089	-1	-13.987	0	-130817.793	-69236.309	68BL- 5
	TOTAL..	1080 0 0			110.958 ✓	-44.291	-1 ✓	-101.733	-1 ✓			