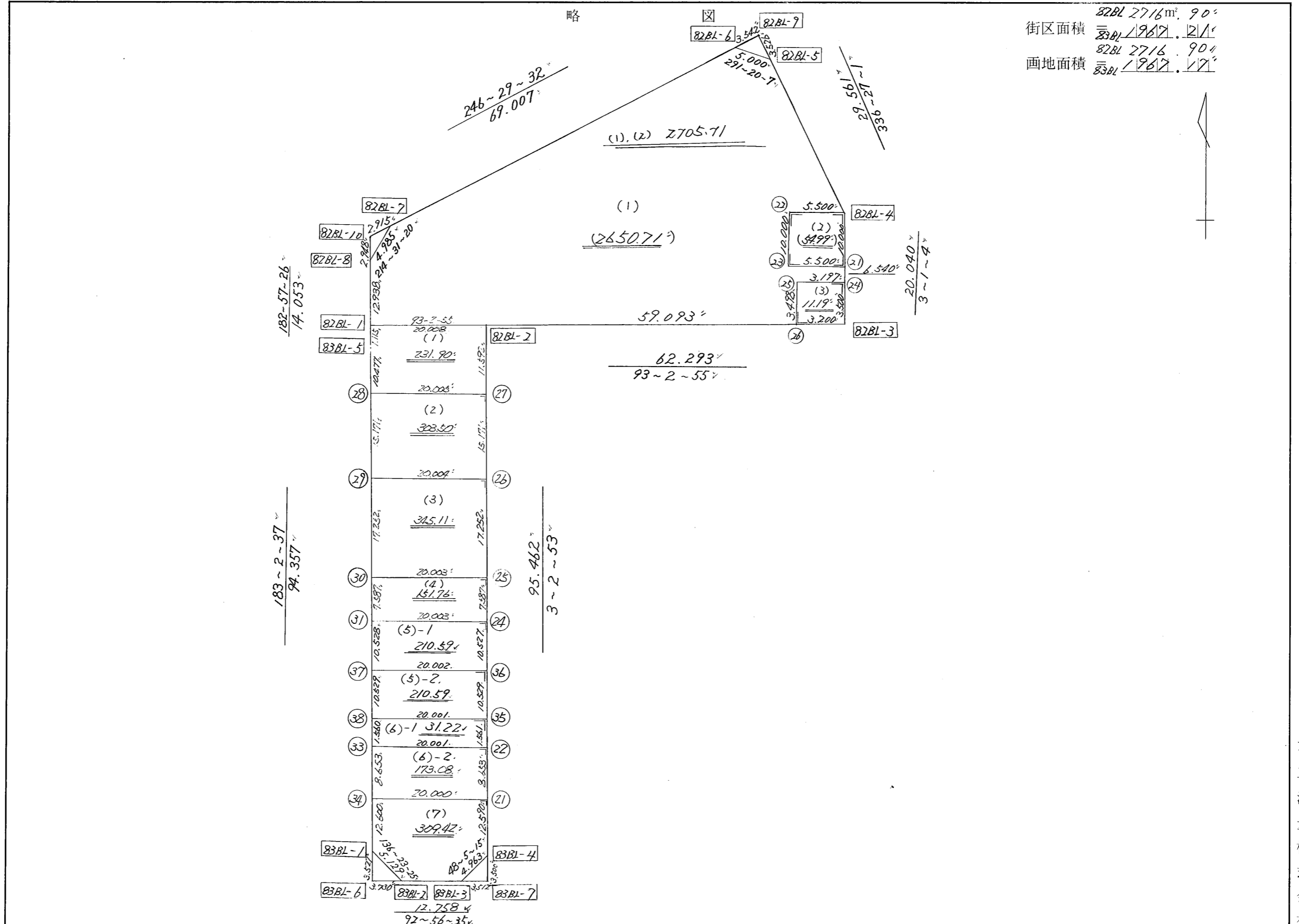


街廓原子一覽表用紙

(82^号 83^号 BL)

街区面積 82BL 2716㎡ 90^号
 83BL 1967.17^号
 画地面積 82BL 2716.90^号
 83BL 1967.17^号



不二測量株式会社

82BL 街区点番号 1 ~ 10^号 筆界点番号 (21) ~ (26) 画地番号 (1) ~ (3)^号
 83BL 1 ~ 7^号 (21) ~ (38)^号 (1) ~ (7)^号

*** メンセキ ケイサン (ハイオウキヨホウ) ***

チクメイ ... ミヤコタチク トチクカクセイリシキヨウ

セイリ NO... 82BL ✓

NO.	INO.	ANGLE	AZIMUTH	LENGTH	DX	*	DY	*	X	Y	DMD	2A	カーブメンセキ
82BL- 8	82BL- 1 ✓		182 57 26						-130980.514	-69394.039			
82BL- 1	82BL- 2 ✓	90 5 29	93 2 55 ✓	20.008 ✓	-1.064	0	19.980	0	-130981.578	-69374.059	19.313	-20.549032	
82BL- 2	82BL- 3 ✓	180 0 0	93 2 55 ✓	62.293 ✓	-3.313	0	62.205	0	-130984.891	-69311.854	101.498	-336.262874	
82BL- 3	82BL- 4 ✓	89 58 9	3 1. 4 ✓	20.040 ✓	20.012	0	1.055	0	-130964.879	-69310.799	164.758	3297.137096	
82BL- 4	82BL- 5 ✓	153 25 57	336 27 1 ✓	29.561 ✓	27.099	0	-11.811	0	-130937.780	-69322.610	154.002	4173.300198	
82BL- 5	82BL- 6 ✓	134 53 6	291 20 7 ✓	5.000 ✓	1.819	0	-4.657	0	-130935.961	-69327.267	137.534	250.174346	
82BL- 6	82BL- 7 ✓	135 9 25	246 29 32 ✓	69.007 ✓	-27.525	0	-63.280	0	-130963.486	-69390.547	69.597	-1915.657425	
82BL- 7	82BL- 8 ✓	148 1 48	214 31 20 ✓	4.985 ✓	-4.107	0	-2.825	0	-130967.593	-69393.372	3.492	-14.341644	
82BL- 8	82BL- 1 ✓	148 26 6	182 57 26 ✓	12.938 ✓	-12.921	0	-0.667	0	-130980.514	-69394.039	0.000	0.000000	
TOTAL..	ソツカクスウ= 8	1080 0 0		223.832	0.000	0 ✓	0.000	0 ✓			ハイメンセキ=	5433.800665	
											1/2=	2716.90	+0.00
											メンセキ=	2716.90 ✓	

*** メンセキ ケイサン (ハイイウキヨホウ) ***

チクメイ ... ミヤコタチク トチクカクセイリシキヨウ

セリ NO... 82BL(1,2)

NO.	NO.	ANGLE	AZIMUTH	LENGTH	DX	*	DY	*	X	Y	DMD	2A	カ-フ'メンセキ
82BL- 8	82BL- 1		182 57 18						-130980.514	-69394.039			
82BL- 1	82BL- 2	90 5 36	93 2 54 ^{SS}	20.008	-1.064	0	19.980	0	-130981.578	-69374.059	19.313	-20.549032	
82BL- 2	82BL-26	180 0 1	93 2 55	59.093	-3.143	0	59.009	1	-130984.721	-69315.049	98.303	-308.966329	
82BL-26	82BL-25	90 0 0	3 2 55	3.498	3.493	0	0.186	0	-130981.228	-69314.863	157.499	550.144007	
82BL-25	82BL-24	270 0 0	93 2 55	3.197	-0.170	2	3.192	1	-130981.396	-69311.670	160.878	-27.027504	
82BL-24	82BL- 4	89 58 9	3 1 4	16.540	16.517	0	0.871	0	-130964.879	-69310.799	164.942	2724.347014	
82BL- 4	82BL- 5	153 25 57	336 27 1	29.561	27.099	0	-11.811	0	-130937.780	-69322.610	154.002	4173.300198	
82BL- 5	82BL- 6	134 53 6	291 20 7	5.000	1.819	0	-4.657	0	-130935.961	-69327.267	137.534	250.174346	
82BL- 6	82BL- 7	135 9 25	246 29 32	69.007	-27.525	0	-63.280	0	-130963.486	-69390.547	69.597	-1915.657425	
82BL- 7	82BL- 8	148 1 48	214 31 20	4.985	-4.107	0	-2.825	0	-130967.593	-69393.372	3.492	-14.341644	
82BL- 8	82BL- 1	148 25 58	182 57 18 ²⁶	12.938	-12.921	0	-0.667	0	-130980.514	-69394.039	0.000	0.000000	
TOTAL...	ソツカクスク = 10	1440	0 0	223.827	-0.002	2	-0.002	2			ハイイウキヨホウ =	5411.423631	
											1/2 =	2705.71	+0.00
											メンセキ =	2705.71	

*** メンセキ ケイザン (ハイオウキヨホウ) ***

チクメイ ... ミヤコタチク トチクカクセイリシキヨウ

レイリ NO... 82BL(3) ✓

NO.	INO.	ANGLE	AZIMUTH	LENGTH	DX	*	DY	*	X	Y	DMD	2A	カーブメンセキ
82BL-25	82BL-26 ✓		183 2 55						-130984.721	-69315.049			
82BL-26	82BL-3 ✓	90 0 0	93 2 55 ✓	3.200 ✓	-0.170	0	3.195	0	-130984.891	-69311.854	3.009	-0.511530	
82BL-3	82BL-24 ✓	89 58 9	3 1 4 ✓	3.500 ✓	3.495	0	0.184	0	-130981.396	-69311.670	6.388	22.326060	
82BL-24	82BL-25 ✓	90 0 0	273 1 4 ✓	3.197 ✓	0.168	0	-3.193	0	-130981.228	-69314.863	3.379	0.567672	
82BL-25	82BL-26 ✓	90 1 51	183 2 55 ✓	3.498 ✓	-3.493	0	-0.186	0	-130984.721	-69315.049	0.000	0.000000	
TOTAL..	ソツカク入ウ= 4	360 0 0		13.395	0.000	0 ✓	0.000	0 ✓			ハイメンセキ=	22.382202	
											1/2=	11.19	+0.00
											メンセキ=	11.19 ✓	

*** メンセキ ケイサン (ハ"イオウキヨホウ) ***

チクメイ ... ミヤコタチク トチクカクセイリシキ"ヨウ

セリ NO... 82BL(1)✓

NO.	INO.	ANGLE	AZIMUTH	LENGTH	DX	*	DY	*	X	Y	DMD	2A	カーブ"メンセキ
82BL- 8	82BL- 1 ✓		182 57 26						-130980.514	-69394.039			
82BL- 1	82BL- 2 ✓	90 5 29	93 2 55 ✓	20.008 ✓	-1.064	0	19.980	0	-130981.578	-69374.059	19.313	-20.549032	
82BL- 2	82BL-26 ✓	180 0 0	93 2 55 ✓	59.093 ✓	-3.143	0	59.009	1	-130984.721	-69315.049	98.303	-308.966329	
82BL-26	82BL-25 ✓	90 0 0	3 2 55 ✓	3.498 ✓	3.493	0	0.186	0	-130981.228	-69314.863	157.499	550.144007	
82BL-25	82BL-24 ✓	269 58 9	93 1 4 ✓	3.197 ✓	-0.168	0	3.193	0	-130981.396	-69311.670	160.878	-27.027504	
82BL-24	82BL-21 ✓	90 0 0	3 1 4 ✓	6.540 ✓	6.531	0	0.344	1	-130974.865	-69311.325	164.416	1073.800896	
82BL-21	82BL-23 ✓	90 0 0	273 1 4 ✓	5.500 ✓	0.290	-1	-5.492	0	-130974.576	-69316.817	159.269	46.028741	
82BL-23	82BL-22 ✓	270 0 0	3 1 4 ✓	10.000 ✓	9.986	1	0.526	0	-130964.589	-69316.291	154.303	1541.024061	
82BL-22	82BL- 4 ✓	270 0 0	93 1 4 ✓	5.500 ✓	-0.290	0	5.492	0	-130964.879	-69310.799	160.321	-46.493090	
82BL- 4	82BL- 5 ✓	63 25 57	336 27 1 ✓	29.561 ✓	27.099	0	-11.811	0	-130937.780	-69322.610	154.002	4173.300198	
82BL- 5	82BL- 6 ✓	134 53 6	291 20 7 ✓	5.000 ✓	1.819	0	-4.657	0	-130935.961	-69327.267	137.534	250.174346	
82BL- 6	82BL- 7 ✓	135 9 25	246 29 32 ✓	69.007 ✓	-27.525	0	-63.280	0	-130963.486	-69390.547	69.597	-1915.657425	
82BL- 7	82BL- 8 ✓	148 1 48	214 31 20 ✓	4.985 ✓	-4.107	0	-2.825	0	-130967.593	-69393.372	3.492	-14.341644	
82BL- 8	82BL- 1 ✓	148 26 6	182 57 26 ✓	12.938 ✓	-12.921	0	-0.667	0	-130980.514	-69394.039	0.000	0.000000	
TOTAL..	ソツカクスク= 13	1980 0 0		234.827	0.000	0 ✓	-0.002	2 ✓			ハ"イメ"セキ=	5301.437225	
											1/2=	2650.71	+0.00
											メ"セキ=	2650.71 ✓	

セリ NO... 82BL(2)✓

82BL-22	82BL-23 ✓		183 1 4						-130974.576	-69316.817			
82BL-23	82BL-21 ✓	90 0 0	93 1 4 ✓	5.500 ✓	-0.290	1	5.492	0	-130974.865	-69311.325	4.966	-1.435174	
82BL-21	82BL- 4 ✓	90 0 0	3 1 4 ✓	10.000 ✓	9.986	0	0.526	0	-130964.879	-69310.799	10.984	109.686224	
82BL- 4	82BL-22 ✓	90 0 0	273 1 4 ✓	5.500 ✓	0.290	0	-5.492	0	-130964.589	-69316.291	6.018	1.745220	
82BL-22	82BL-23 ✓	90 0 0	183 1 4 ✓	10.000 ✓	-9.986	-1	-0.526	0	-130974.576	-69316.817	0.000	0.000000	
TOTAL..	ソツカクスク= 4	360 0 0		31.000	0.000	0 ✓	0.000	0 ✓			ハ"イメ"セキ=	109.996270	
											1/2=	54.99	+0.00
											メ"セキ=	54.99 ✓	

チクメイ ... ミヤコタチク トチクカクセイリシキヨウ

NO.	NO.	ANGLE *	AZIMUTH	LENGTH	DX	*	DY	*	X	Y	NO.
	82BL- 2 ✓								-130981.578	-69374.059	82BL- 2
82BL- 2	82BL-26 ✓		93 2 55 ✓	59.093 ✓	-3.143	0	59.009	1	-130984.721	-69315.049	82BL-26
82BL-26	82BL- 3 ✓	180 0 0	93 2 55 ✓	3.200 ✓	-0.170	0	3.195	0	-130984.891	-69311.854	82BL- 3
	TOTAL..	180 0 0		62.293 ✓	-3.313	0 ✓	62.204	1 ✓			
	82BL- 3 ✓								-130984.891	-69311.854	82BL- 3
82BL- 13	82BL-24 ✓		3 1 4 ✓	3.500 ✓	3.495	0	0.184	0	-130981.396	-69311.670	82BL-24
82BL-24	82BL-21 ✓	180 0 0	3 1 4 ✓	6.540 ✓	6.531	0	0.344	1	-130974.865	-69311.325	82BL-21
82BL-21	82BL- 4 ✓	180 0 0	3 1 4 ✓	10.000 ✓	9.986	0	0.526	0	-130964.879	-69310.799	82BL- 4
	TOTAL..	360 0 0		20.040 ✓	20.012	0 ✓	1.054	1 ✓			

*** メンセキ ケイサン (ハ"イオウキヨホウ) ***

チクメイ ... ミヤコタ"チク トチクカクセイリシ"キ"ヨウ

ペリ NO... 83BL ✓

NO.	INO.	ANGLE	AZIMUTH	LENGTH	DX	*	DY	*	X	Y	DMD	2A	カ-フ"メンセキ
83BL- 5	83BL- 1 ✓		183 2 37						-131075.851	-69399.107			
83BL- 1	83BL- 2 ✓	133 20 48	136 23 25 ✓	5.129 ✓	-3.714	0	3.538	0	-131079.565	-69395.569	-1.472	5.467008	
83BL- 2	83BL- 3 ✓	136 33 10	92 56 35 ✓	12.758 ✓	-0.655	0	12.741	0	-131080.220	-69382.828	14.807	-9.698585	
83BL- 3	83BL- 4 ✓	135 8 40	48 5 15 ✓	4.963 ✓	3.315	0	3.693	0	-131076.905	-69379.135	31.241	103.563915	
83BL- 4	82BL- 2 ✓	134 57 38	3 2 53 ✓	95.462 ✓	95.327	0	5.076	0	-130981.578	-69374.059	40.010	3814.033270	
82BL- 2	82BL- 1 ✓	90 0 2	273 2 55 ✓	20.008 ✓	1.064	0	-19.980	0	-130980.514	-69394.039	25.106	26.712784	
82BL- 1	83BL- 5 ✓	89 54 31	182 57 26 ✓	1.115 ✓	-1.114	1	-0.058	0	-130981.627	-69394.097	5.068	-5.640684	
83BL- 5	83BL- 1 ✓	180 5 11	183 2 37 ✓	94.357 ✓	-94.224	0	-5.010	0	-131075.851	-69399.107	0.000	0.000000	
TOTAL..	ソツカクスウ= 7	900 0 0		233.792	-0.001	1 ✓	0.000	0 ✓			ハイメンセキ=	3934.437708	
											1/2=	1967.21	+0.00
											メンセキ=	1967.21 ✓	

*** メンセキ ケイサン (ハイオウキヨボウ) ***

チクメイ ... ミヤコタチク トチクカクセイリシキヨウ

											セリ NO... 83BL(1)✓					
NO.	NO.	ANGLE			AZIMUTH		LENGTH	DX	*	DY	*	X	Y	DMD	2A	カーブメンセキ
83BL- 5	83BL-28✓				183	2 37						-130992.088	-69394.653			
83BL-28	83BL-27✓	90	0 16	93	2 53✓	20.005✓	-1.064	-2	19.977	0	-130993.154	-69374.676	19.421	-20.702786		
83BL-27	82BL- 2✓	90	0 0	3	2 53✓	11.592✓	11.576	0	0.616	1	-130981.578	-69374.059	40.015	463.213640		
82BL- 2	82BL- 1✓	90	0 2	273	2 55✓	20.008✓	1.064	0	-19.980	0	-130980.514	-69394.039	20.652	21.973728		
82BL- 1	83BL- 5✓	89	54 31	182	57 26✓	1.115✓	-1.114	1	-0.058	0	-130981.627	-69394.097	0.614	-0.683382		
83BL- 5	83BL-28✓	180	5 11	183	2 37✓	10.477✓	-10.462	1	-0.556	0	-130992.088	-69394.653	0.000	0.000000		
TOTAL..	ソツカクスウ= 5	540	0 0			63.197	0.000	0✓	-0.001	1✓			ハイメンセキ=	463.801200		
													1/2=	231.90	+0.00	
													メンセキ=	231.90✓		

											セリ NO... 83BL(2)✓					
83BL-28	83BL-29✓				183	2 37						-131007.238	-69395.459			
83BL-29	83BL-26✓	90	0 16	93	2 53✓	20.004✓	-1.064	-2	19.976	0	-131008.304	-69375.483	19.170	-20.435220		
83BL-26	83BL-27✓	90	0 0	3	2 53✓	15.171✓	15.150	0	0.807	0	-130993.154	-69374.676	39.953	605.287950		
83BL-27	83BL-28✓	90	0 0	273	2 53✓	20.005✓	1.064	2	-19.977	0	-130992.088	-69394.653	20.783	22.154678		
83BL-28	83BL-29✓	89	59 44	183	2 37✓	15.171✓	-15.150	0	-0.806	0	-131007.238	-69395.459	0.000	0.000000		
TOTAL..	ソツカクスウ= 4	360	0 0			70.351	0.000	0✓	0.000	0✓			ハイメンセキ=	607.007408		
													1/2=	303.50	+0.00	
													メンセキ=	303.50✓		

*** メンセキ ケイサン (ハイオウキヨボウ) ***

チクメイ ... ミヤコタチク トチクカクセイリシキヨウ

セリ NO... 83BL(3)✓

NO.	NO.	ANGLE	AZIMUTH	LENGTH	DX	*	DY	*	X	Y	DMD	2A	カーブメンセキ
83BL-29	83BL-30✓		183 2 37						-131024.466	-69396.375			
83BL-30	83BL-25✓	90 0 16	93 2 53✓	20.003✓	-1.064	-2	19.975	0	-131025.532	-69376.400	19.059	-20.316894	
83BL-25	83BL-26✓	90 0 0	3 2 53✓	17.252✓	17.228	0	0.917	0	-131008.304	-69375.483	39.951	688.275828	
83BL-26	83BL-29✓	90 0 0	273 2 53✓	20.004✓	1.064	2	-19.976	0	-131007.238	-69395.459	20.892	22.270872	
83BL-29	83BL-30✓	89 59 44	183 2 37✓	17.252✓	-17.228	0	-0.916	0	-131024.466	-69396.375	0.000	0.000000	
TOTAL..	ソツカクスク= 4	360 0 0		74.511	0.000	0✓	0.000	0✓			ハイメンセキ=	690.229806	
											1/2=	345.11	+0.00
											メンセキ=	345.11✓	

セリ NO... 83BL(4)✓

83BL-30	83BL-31✓		183 2 37						-131032.042	-69396.778			
83BL-31	83BL-24✓	90 0 16	93 2 53✓	20.003✓	-1.064	-2	19.975	0	-131033.108	-69376.803	19.572	-20.863752	
83BL-24	83BL-25✓	90 0 0	3 2 53✓	7.587✓	7.576	0	0.403	0	-131025.532	-69376.400	39.950	302.661200	
83BL-25	83BL-30✓	90 0 0	273 2 53✓	20.003✓	1.064	2	-19.975	0	-131024.466	-69396.375	20.378	21.722948	
83BL-30	83BL-31✓	89 59 44	183 2 37✓	7.587✓	-7.576	0	-0.403	0	-131032.042	-69396.778	0.000	0.000000	
TOTAL..	ソツカクスク= 4	360 0 0		55.180	0.000	0✓	0.000	0✓			ハイメンセキ=	303.520396	
											1/2=	151.76	+0.00
											メンセキ=	151.76✓	

*** メンセキ ケイサン (ハ"イウキヨホウ) ***

チクメイ ... ミヤコタ"チク トチクカクセイリシ"キ"ヨウ

セリ NO... 83BL(5)-1 ✓

NO.	NO.	ANGLE	AZIMUTH	LENGTH	DX	*	DY	*	X	Y	DMD	2A	カ-フ"メンセキ
83BL-31	83BL-32 ✓		183 2 37						-131043.314	-69397.377			
83BL-32	83BL-23 ✓	90 0 16	93 2 53 ✓	20.002 ✓	-1.064	0	19.974	0	-131044.378	-69377.403	19.375	-20.615000	
83BL-23	83BL-24 ✓	90 0 0	3 2 53 ✓	11.287 ✓	11.271	-1	0.600	0	-131033.108	-69376.803	39.949	450.225230	
83BL-24	83BL-31 ✓	90 0 0	273 2 53 ✓	20.003 ✓	1.064	2	-19.975	0	-131032.042	-69396.778	20.574	21.931884	
83BL-31	83BL-32 ✓	89 59 44	183 2 37 ✓	11.287 ✓	-11.271	-1	-0.599	0	-131043.314	-69397.377	0.000	0.000000	
TOTAL..	ソツカクスウ= 4	360 0 0		62.579	0.000	0 ✓	0.000	0 ✓			ハ"イウキヨホウ=	451.542114	
											1/2=	225.77	+0.00
											メンセキ=	225.77 ✓	

セリ NO... 83BL(5)-2 ✓

83BL-32	83BL-33 ✓		183 2 37						-131054.628	-69397.979			
83BL-33	83BL-22 ✓	90 0 16	93 2 53 ✓	20.001 ✓	-1.064	-1	19.973	0	-131055.693	-69378.006	19.371	-20.630115	
83BL-22	83BL-23 ✓	90 0 0	3 2 53 ✓	11.330 ✓	11.314	1	0.602	1	-131044.378	-69377.403	39.947	452.000305	
83BL-23	83BL-32 ✓	90 0 0	273 2 53 ✓	20.002 ✓	1.064	0	-19.974	0	-131043.314	-69397.377	20.576	21.892864	
83BL-32	83BL-33 ✓	89 59 44	183 2 37 ✓	11.330 ✓	-11.314	0	-0.602	0	-131054.628	-69397.979	0.000	0.000000	
TOTAL..	ソツカクスウ= 4	360 0 0		62.663	0.000	0 ✓	-0.001	1 ✓			ハ"イウキヨホウ=	453.263054	
											1/2=	226.63	+0.00
											メンセキ=	226.63 ✓	

*** メンセキ ケイザン (ハ"イオウキヨホウ) ***

チクメイ ... ミヤコタ"チク トチクカクセイリシ"キ"ヨウ

セリ NO... 83BL(5)-1 ✓

NO.	NO.	ANGLE	AZIMUTH	LENGTH	DX	*	DY	*	X	Y	DMD	2A	カーブ"メンセキ
83BL-31	83BL-37 ✓		183 2 37						-131042.556	-69397.337			
83BL-37	83BL-36 ✓	90 0 16	93 2 53 ✓	20.002 ✓	-1.064	0	19.974	0	-131043.620	-69377.363	19.415	-20.657560	
83BL-36	83BL-24 ✓	90 0 0	3 2 53 ✓	10.527 ✓	10.512	0	0.560	0	-131033.108	-69376.803	39.949	419.943888	
83BL-24	83BL-31 ✓	90 0 0	273 2 53 ✓	20.003 ✓	1.064	2	-19.975	0	-131032.042	-69396.778	20.534	21.889244	
83BL-31	83BL-37 ✓	89 59 44	183 2 37 ✓	10.528 ✓	-10.513	-1	-0.559	0	-131042.556	-69397.337	0.000	0.000000	
TOTAL..	ソツカクスク= 4	360 0 0		61.060	-0.001	1 ✓	0.000	0 ✓			ハ"イメンセキ=	421.175572	

1/2= 210.58 +0.00
 メンセキ= 210.58 ✓
 + 0.01 ✓
 210.59 ✓

セリ NO... 83BL(5)-2 ✓

83BL-37	83BL-38 ✓		183 2 37						-131053.070	-69397.896			
83BL-38	83BL-35 ✓	90 0 16	93 2 53 ✓	20.001 ✓	-1.064	0	19.973	0	-131054.134	-69377.923	19.414	-20.656496	
83BL-35	83BL-36 ✓	90 0 0	3 2 53 ✓	10.529 ✓	10.514	0	0.560	0	-131043.620	-69377.363	39.947	420.002758	
83BL-36	83BL-37 ✓	90 0 0	273 2 53 ✓	20.002 ✓	1.064	0	-19.974	0	-131042.556	-69397.337	20.533	21.847112	
83BL-37	83BL-38 ✓	89 59 44	183 2 37 ✓	10.529 ✓	-10.514	0	-0.559	0	-131053.070	-69397.896	0.000	0.000000	
TOTAL..	ソツカクスク= 4	360 0 0		61.061	0.000	0 ✓	0.000	0 ✓			ハ"イメンセキ=	421.193374	

1/2= 210.59 +0.00
 メンセキ= 210.59 ✓

*** メンセキ ケイサン (ハ"イオウキヨホウ) ***

チクメイ ... ミヤコタ"チク トチクカクセイリシ"キ"ヨウ

セイリ NO... 83BL(6)-1 ✓

NO.	NO.	ANGLE	AZIMUTH	LENGTH	DX	*	DY	*	X	Y	DMD	2A	カ-フ"メンセキ
83BL-38	83BL-33 ✓		183 2 37						-131054.628	-69397.979			
83BL-33	83BL-22 ✓	90 0 16	93 2 53 ✓	20.001 ✓	-1.064	-1	19.973	0	-131055.693	-69378.006	19.890	-21.182850	
83BL-22	83BL-35 ✓	90 0 0	3 2 53 ✓	1.561 ✓	1.559	0	0.083	0	-131054.134	-69377.923	39.946	62.275814	
83BL-35	83BL-38 ✓	90 0 0	273 2 53 ✓	20.001 ✓	1.064	0	-19.973	0	-131053.070	-69397.896	20.056	21.339584	
83BL-38	83BL-33 ✓	89 59 44	183 2 37 ✓	1.560 ✓	-1.558	0	-0.083	0	-131054.628	-69397.979	0.000	0.000000	
TOTAL..	ソツカクスウ= 4	360 0 0		43.123	0.001	-1 ✓	0.000	0 ✓					
											ハ"イメンセキ=	62.432548	
											1/2=	31.21	+0.00
											メンセキ=	31.21 ✓	
												+ 0.01	
												<u>31.22 ✓</u>	

*** メンセキ ケイサン (ハイオウキヨホウ) ***

チクメイ ... ミヤコタチク トチクカクセイリシキヨウ

セリ NO... 83BL(6)-Z

NO.	NO.	ANGLE	AZIMUTH	LENGTH	DX	*	DY	*	X	Y	DMD	2A	カーブメンセキ
83BL-33	83BL-34✓		183 2 37						-131063.270	-69398.438			
83BL-34	83BL-21✓	90 0 16	93 2 53✓	20.000✓	-1.063	-1	19.972	0	-131064.334	-69378.466	19.513	-20.761832	
83BL-21	83BL-22✓	90 0 0	3 2 53✓	8.653✓	8.641	0	0.460	0	-131055.693	-69378.006	39.945	345.164745	
83BL-22	83BL-33✓	90 0 0	273 2 53✓	20.001✓	1.064	1	-19.973	0	-131054.628	-69397.979	20.432	21.760080	
83BL-33	83BL-34✓	89 59 44	183 2 37✓	8.653✓	-8.641	-1	-0.459	0	-131063.270	-69398.438	0.000	0.000000	
TOTAL..	ソツカクスウ= 4	360 0 0		57.307	0.001	-1✓	0.000	0✓			ハイメンセキ=	346.162993	
											1/2=	173.08	+0.00
											メンセキ=	173.08✓	

セリ NO... 83BL(7)✓

83BL-34	83BL- 1✓		183 2 37						-131075.851	-69399.107			
83BL- 1	83BL- 2✓	133 20 48	136 23 25✓	5.129✓	-3.714	0	3.538	0	-131079.565	-69395.569	2.869	-10.655466	
83BL- 2	83BL- 3✓	136 33 10	92 56 35✓	12.758✓	-0.655	0	12.741	0	-131080.220	-69382.828	19.148	-12.541940	
83BL- 3	83BL- 4✓	135 8 40	48 5 15✓	4.963✓	3.315	0	3.693	0	-131076.905	-69379.135	35.582	117.954330	
83BL- 4	83BL-21✓	134 57 38	3 2 53✓	12.590✓	12.572	-1	0.669	0	-131064.334	-69378.466	39.944	502.136024	
83BL-21	83BL-34✓	90 0 0	273 2 53✓	20.000✓	1.063	1	-19.972	0	-131063.270	-69398.438	20.641	21.962024	
83BL-34	83BL- 1✓	89 59 44	183 2 37✓	12.600✓	-12.582	1	-0.669	0	-131075.851	-69399.107	0.000	0.000000	
TOTAL..	ソツカクスウ= 6	720 0 0		68.040	-0.001	1✓	0.000	0✓			ハイメンセキ=	618.854972	
											1/2=	309.42	+0.00
											メンセキ=	309.42✓	

チクメイ ... ミヤコタチク トチクカクセイリシキヨウ

NO.	NO.	ANGLE	*	AZIMUTH	LENGTH	DX	*	DY	*	X	Y	NO.
	83BL- 4 ✓									-131076.905	-69379.135	83BL- 4
83BL- 4	83BL-21 ✓			3 2 53 ✓	12.590 ✓	12.572	-1	0.669	0	-131064.334	-69378.466	83BL-21
83BL-21	83BL-22 ✓	180 0 0		3 2 53 ✓	8.653 ✓	8.641	0	0.460	0	-131055.693	-69378.006	83BL-22
83BL-22	83BL-23 ✓	180 0 0		3 2 53 ✓	11.330 ✓	11.314	1	0.602	1	-131044.378	-69377.403	83BL-23
83BL-23	83BL-24 ✓	180 0 0		3 2 53 ✓	11.287 ✓	11.271	-1	0.600	0	-131033.108	-69376.803	83BL-24
83BL-24	83BL-25 ✓	180 0 0		3 2 53 ✓	7.587 ✓	7.576	0	0.403	0	-131025.532	-69376.400	83BL-25
83BL-25	83BL-26 ✓	180 0 0		3 2 53 ✓	17.252 ✓	17.228	0	0.917	0	-131008.304	-69375.483	83BL-26
83BL-26	83BL-27 ✓	180 0 0		3 2 53 ✓	15.171 ✓	15.150	0	0.807	0	-130993.154	-69374.676	83BL-27
83BL-27	82BL- 2 ✓	180 0 0		3 2 53 ✓	11.592 ✓	11.576	0	0.616	1	-130981.578	-69374.059	82BL- 2
	TOTAL..	1260 0 0			95.462 ✓	95.328	-1 ✓	5.074	2 ✓			
	83BL- 5 ✓									-130981.627	-69394.097	83BL- 5
83BL- 5	83BL-28 ✓			183 2 37 ✓	10.477 ✓	-10.462	1	-0.556	0	-130992.088	-69394.653	83BL-28
83BL-28	83BL-29 ✓	180 0 0		183 2 37 ✓	15.171 ✓	-15.150	0	-0.806	0	-131007.238	-69395.459	83BL-29
83BL-29	83BL-30 ✓	180 0 0		183 2 37 ✓	17.252 ✓	-17.228	0	-0.916	0	-131024.466	-69396.375	83BL-30
83BL-30	83BL-31 ✓	180 0 0		183 2 37 ✓	7.587 ✓	-7.576	0	-0.403	0	-131032.042	-69396.778	83BL-31
83BL-31	83BL-32 ✓	180 0 0		183 2 37 ✓	11.287 ✓	-11.271	-1	-0.599	0	-131043.314	-69397.377	83BL-32
83BL-32	83BL-33 ✓	180 0 0		183 2 37 ✓	11.330 ✓	-11.314	0	-0.602	0	-131054.628	-69397.979	83BL-33
83BL-33	83BL-34 ✓	180 0 0		183 2 37 ✓	8.653 ✓	-8.641	-1	-0.459	0	-131063.270	-69398.438	83BL-34
83BL-34	83BL- 1 ✓	180 0 0		183 2 37 ✓	12.600 ✓	-12.582	1	-0.669	0	-131075.851	-69399.107	83BL- 1
	TOTAL..	1260 0 0			94.357 ✓	-94.224	0 ✓	-5.010	0 ✓			

チクメイ ... ミヤコタチク トチクカクセイリシキヨウ

NO.	NO.	ANGLE	*	AZIMUTH	LENGTH	DX	*	DY	*	X	Y	NO.
	83BL- 4 ✓									-131076.905	-69379.135	83BL- 4
83BL- 4	83BL-21 ✓			3 2 53 ✓	12.590 ✓	12.572	-1	0.669	0	-131064.334	-69378.466	83BL-21
83BL-21	83BL-22 ✓	180 0 0		3 2 53 ✓	8.653 ✓	8.641	0	0.460	0	-131055.693	-69378.006	83BL-22
83BL-22	83BL-35 ✓	180 0 0		3 2 53 ✓	1.561 ✓	1.559	0	0.083	0	-131054.134	-69377.923	83BL-35
83BL-35	83BL-36 ✓	180 0 0		3 2 53 ✓	10.529 ✓	10.514	0	0.560	0	-131043.620	-69377.363	83BL-36
83BL-36	83BL-24 ✓	180 0 0		3 2 53 ✓	10.527 ✓	10.512	0	0.560	0	-131033.108	-69376.803	83BL-24
83BL-24	83BL-25 ✓	180 0 0		3 2 53 ✓	7.587 ✓	7.576	0	0.403	0	-131025.532	-69376.400	83BL-25
83BL-25	83BL-26 ✓	180 0 0		3 2 53 ✓	17.252 ✓	17.228	0	0.917	0	-131008.304	-69375.483	83BL-26
83BL-26	83BL-27 ✓	180 0 0		3 2 53 ✓	15.171 ✓	15.150	0	0.807	0	-130993.154	-69374.676	83BL-27
83BL-27	82BL- 2 ✓	180 0 0		3 2 53 ✓	11.592 ✓	11.576	0	0.616	1	-130981.578	-69374.059	82BL- 2
	TOTAL..	1440 0 0			95.462 ✓	95.328	-1 ✓	5.075	1 ✓			
	83BL- 5 ✓									-130981.627	-69394.097	83BL- 5
83BL- 5	83BL-28 ✓			183 2 37 ✓	10.477 ✓	-10.462	1	-0.556	0	-130992.088	-69394.653	83BL-28
83BL-28	83BL-29 ✓	180 0 0		183 2 37 ✓	15.171 ✓	-15.150	0	-0.806	0	-131007.238	-69395.459	83BL-29
83BL-29	83BL-30 ✓	180 0 0		183 2 37 ✓	17.252 ✓	-17.228	0	-0.916	0	-131024.466	-69396.375	83BL-30
83BL-30	83BL-31 ✓	180 0 0		183 2 37 ✓	7.587 ✓	-7.576	0	-0.403	0	-131032.042	-69396.778	83BL-31
83BL-31	83BL-37 ✓	180 0 0		183 2 37 ✓	10.528 ✓	-10.513	-1	-0.559	0	-131042.556	-69397.337	83BL-37
83BL-37	83BL-38 ✓	180 0 0		183 2 37 ✓	10.529 ✓	-10.514	0	-0.559	0	-131053.070	-69397.896	83BL-38
83BL-38	83BL-33 ✓	180 0 0		183 2 37 ✓	1.560 ✓	-1.558	0	-0.083	0	-131054.628	-69397.979	83BL-33
83BL-33	83BL-34 ✓	180 0 0		183 2 37 ✓	8.653 ✓	-8.641	-1	-0.459	0	-131063.270	-69398.438	83BL-34
83BL-34	83BL- 1 ✓	180 0 0		183 2 37 ✓	12.600 ✓	-12.582	1	-0.669	0	-131075.851	-69399.107	83BL- 1
	TOTAL..	1440 0 0			94.357 ✓	-94.224	0 ✓	-5.010	0 ✓			