

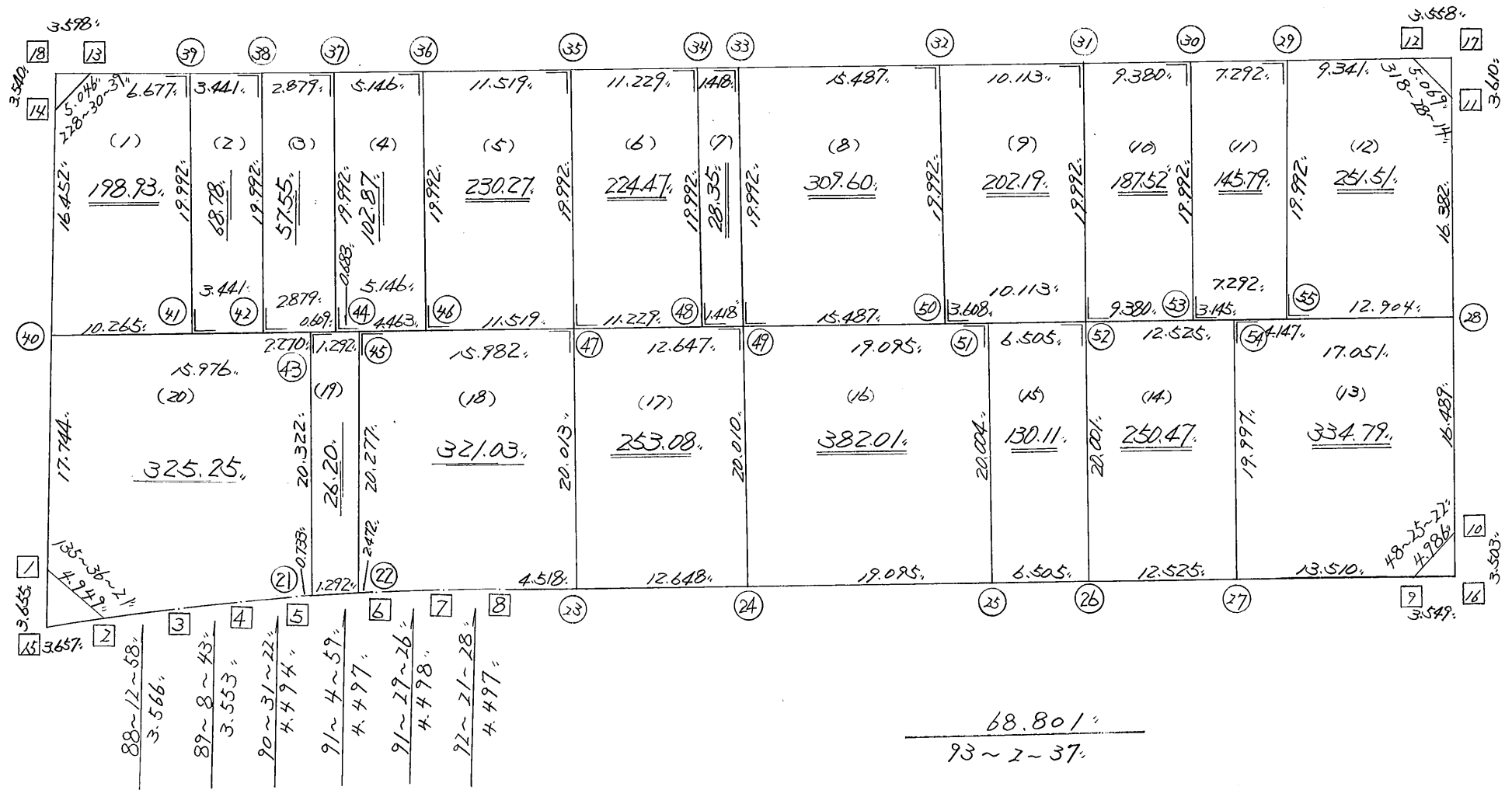
略 図

街区面積 =  $4030.88$  m<sup>2</sup>  
 画地面積 =  $4030.72$

$\frac{273-3-37}{93.922}$

$\frac{183-1-51}{34.196}$

$\frac{32.871}{3-2-35}$



$\frac{68.801}{93-2-37}$

街区点番号 1 ~ 18, 筆界点番号 (21) ~ (55), 画地番号 (1) ~ (20),

\*\*\* メンセキ ケイサン (ハ"イオウキヨホウ) \*\*\*

チクメイ ... ミヤコタ"チク トチクカクセイリシ"キ"ヨウ

セリ NO... 89BL ✓

NO.	NO.	ANGLE	AZIMUTH	LENGTH	DX	*	DY	*	X	Y	DMD	2A	カ-フ"メンセキ
89BL-14	89BL- 1 ✓		183 1 51						-131071.402	-69506.083			
89BL- 1	89BL- 2 ✓	132 34 30	135 36 21 ✓	4.949 ✓	-3.536	0	3.462	0	-131074.938	-69502.621	1.654	-5.848544	
89BL- 2	89BL- 3 ✓	132 36 37	88 12 58 ✓	3.566 ✓	0.111	0	3.564	0	-131074.827	-69499.057	8.680	0.963480	
89BL- 3	89BL- 4 ✓	180 55 45	89 8 43 ✓	3.553 ✓	0.053	0	3.553	0	-131074.774	-69495.504	15.797	0.837241	
89BL- 4	89BL- 5 ✓	181 22 39	90 31 22 ✓	4.494 ✓	-0.041	0	4.494	0	-131074.815	-69491.010	23.844	-0.977604	
89BL- 5	89BL- 6 ✓	180 33 37	91 4 59 ✓	4.497 ✓	-0.085	0	4.496	0	-131074.900	-69486.514	32.834	-2.790890	
89BL- 6	89BL- 7 ✓	180 24 27	91 29 26 ✓	4.498 ✓	-0.117	0	4.496	0	-131075.017	-69482.018	41.826	-4.893642	
89BL- 7	89BL- 8 ✓	180 52 2	92 21 28 ✓	4.497 ✓	-0.185	0	4.493	0	-131075.202	-69477.525	50.815	-9.400775	
89BL- 8	89BL- 9 ✓	180 41 9	93 2 37 ✓	68.801 ✓	-3.653	0	68.704	0	-131078.855	-69408.821	124.012	-453.015836	
89BL- 9	89BL-10 ✓	135 22 45	48 25 22 ✓	4.986 ✓	3.309	0	3.730	0	-131075.546	-69405.091	196.446	650.039814	
89BL-10	89BL-11 ✓	134 37 13	3 2 35 ✓	32.871 ✓	32.825	0	1.745	0	-131042.721	-69403.346	201.921	6628.056825	
89BL-11	89BL-12 ✓	135 25 39	318 28 14 ✓	5.069 ✓	3.795	0	-3.361	0	-131038.926	-69406.707	200.305	760.157475	
89BL-12	89BL-13 ✓	134 35 25	273 3 39 ✓	93.922 ✓	5.015	0	-93.788	0	-131033.911	-69500.495	103.156	517.327340	
89BL-13	89BL-14 ✓	135 27 0	228 30 39 ✓	5.046 ✓	-3.343	0	-3.780	0	-131037.254	-69504.275	5.588	-18.680684	
89BL-14	89BL- 1 ✓	134 31 12	183 1 51 ✓	34.196 ✓	-34.148	0	-1.808	0	-131071.402	-69506.083	0.000	0.000000	
TOTAL..	ソツカクスク = 14	2160	0 0	274.945	0.000	0 ✓	0.000	0 ✓			ハ"イメンセキ =	8061.774200	
											1/2 =	4030.88	+0.00
											メンセキ =	4030.88 ✓	

\*\*\* メンセキ ケイザン (ハ"イオウキヨホウ) \*\*\*

チクメイ ... ミヤコタ"チク トチクカクセイリシ"キ"ヨウ

セリ NO... 89BL(1) ✓

NO.	NO.	ANGLE	AZIMUTH			LENGTH	DX	*	DY	*	X	Y	DMD	2A	カ-フ"メンセキ
89BL-14	89BL-40 ✓		183	1	51						-131053.683	-69505.145			
89BL-40	89BL-41 ✓	90 1 48	93	3	39 ✓	10.265 ✓	-0.548	0	10.250	0	-131054.231	-69494.895	9.380	-5.140240	
89BL-41	89BL-39 ✓	90 0 0	3	3	39 ✓	19.992 ✓	19.963	0	1.067	0	-131034.268	-69493.828	20.697	413.174211	
89BL-39	89BL-13 ✓	90 0 0	273	3	39 ✓	6.677 ✓	0.357	0	-6.667	0	-131033.911	-69500.495	15.097	5.389629	
89BL-13	89BL-14 ✓	135 27 0	228	30	39 ✓	5.046 ✓	-3.343	0	-3.780	0	-131037.254	-69504.275	4.650	-15.544950	
89BL-14	89BL-40 ✓	134 31 12	183	1	51 ✓	16.452 ✓	-16.429	0	-0.870	0	-131053.683	-69505.145	0.000	0.000000	
TOTAL..	ソツカクスク= 5	540 0 0				58.432	0.000	0 ✓	0.000	0 ✓			ハ"イメンセキ= 397.878650		
													1/2= 198.93	+0.00	
													メンセキ= 198.93 ✓		

セリ NO... 89BL(2) ✓

89BL-39	89BL-41 ✓		183	3	39						-131054.231	-69494.895		
89BL-41	89BL-42 ✓	90 0 0	93	3	39 ✓	3.441 ✓	-0.184	0	3.436	0	-131054.415	-69491.459	2.369	-0.435896
89BL-42	89BL-38 ✓	90 0 0	3	3	39 ✓	19.992 ✓	19.963	0	1.067	0	-131034.452	-69490.392	6.872	137.185736
89BL-38	89BL-39 ✓	90 0 0	273	3	39 ✓	3.441 ✓	0.184	0	-3.436	0	-131034.268	-69493.828	4.503	0.828552
89BL-39	89BL-41 ✓	90 0 0	183	3	39 ✓	19.992 ✓	-19.963	0	-1.067	0	-131054.231	-69494.895	0.000	0.000000
TOTAL..	ソツカクスク= 4	360 0 0				46.866	0.000	0 ✓	0.000	0 ✓			ハ"イメンセキ= 137.578392	
													1/2= 68.78	+0.00
													メンセキ= 68.78 ✓	

\*\*\* ムンセキ ケイサン (ハ"イオウキヨホウ) \*\*\*

チクメイ ... ミヤコタ"チク トチクカクセイリシ"キ"ヨウ

セリ NO... 89BL(3)✓

NO.	NO.	ANGLE	AZIMUTH	LENGTH	DX	*	DY	*	X	Y	DMD	2A	カ-フ"ムンセキ
89BL-38	89BL-42✓		183 3 39						-131054.415	-69491.459			
89BL-42	89BL-44✓	90 0 0	93 3 39✓	2.879✓	-0.154	0	2.875	0	-131054.569	-69488.584	1.808	-0.278432	
89BL-44	89BL-37✓	90 0 0	3 3 39✓	19.992✓	19.963	0	1.067	0	-131034.606	-69487.517	5.750	114.787250	
89BL-37	89BL-38✓	90 0 0	273 3 39✓	2.879✓	0.154	0	-2.875	0	-131034.452	-69490.392	3.942	0.607068	
89BL-38	89BL-42✓	90 0 0	183 3 39✓	19.992✓	-19.963	0	-1.067	0	-131054.415	-69491.459	0.000	0.000000	
TOTAL..	ソツカクスク= 4	360 0 0		45.742	0.000	0✓	0.000	0✓			ハ"イムンセキ=	115.115886	
											1/2=	57.55	+0.00
											ムンセキ=	57.55✓	

セリ NO... 89BL(4)✓

89BL-37	89BL-44✓		183 3 39						-131054.569	-69488.584			
89BL-44	89BL-46✓	90 0 0	93 3 39✓	5.146✓	-0.275	1	5.139	-1	-131054.843	-69483.446	4.071	-1.115454	
89BL-46	89BL-36✓	90 0 0	3 3 39✓	19.992✓	19.963	-1	1.067	1	-131034.881	-69482.378	10.277	205.149474	
89BL-36	89BL-37✓	90 0 0	273 3 39✓	5.146✓	0.275	0	-5.139	0	-131034.606	-69487.517	6.206	1.706650	
89BL-37	89BL-44✓	90 0 0	183 3 39✓	19.992✓	-19.963	0	-1.067	0	-131054.569	-69488.584	0.000	0.000000	
TOTAL..	ソツカクスク= 4	360 0 0		50.276	0.000	0✓	0.000	0✓			ハ"イムンセキ=	205.740670	
											1/2=	102.87	+0.00
											ムンセキ=	102.87✓	

\*\*\* メンセキ ケイザン (ハ"イオウキヨホウ) \*\*\*

チクメイ ... ミヤコタ"チク トチクカクセイリシ"キ"ヨウ

セリ NO... 89BL(5) ✓

NO.	NO.	ANGLE	AZIMUTH	LENGTH	DX	*	DY	*	X	Y	DMD	2A	カ-フ"メンセキ
89BL-36	89BL-46 ✓		183 3 39						-131054.843	-69483.446			
89BL-46	89BL-47 ✓	90 0 0	93 3 39 ✓	11.519 ✓	-0.615	0	11.503	0	-131055.458	-69471.943	10.435	-6.417525	
89BL-47	89BL-35 ✓	90 0 0	3 3 39 ✓	19.992 ✓	19.963	0	1.067	0	-131035.495	-69470.876	23.005	459.248815	
89BL-35	89BL-36 ✓	90 0 0	273 3 39 ✓	11.519 ✓	0.615	-1	-11.503	1	-131034.881	-69482.378	12.570	7.717980	
89BL-36	89BL-46 ✓	90 0 0	183 3 39 ✓	19.992 ✓	-19.963	1	-1.067	-1	-131054.843	-69483.446	0.000	0.000000	
TOTAL..	ソツカクスウ= 4	360 0 0		63.022	0.000	0 ✓	0.000	0 ✓			ハ"イメンセキ=	460.549270	
											1/2=	230.27	+0.00
											メンセキ=	230.27 ✓	

セリ NO... 89BL(6) ✓

89BL-35	89BL-47 ✓		183 3 39						-131055.458	-69471.943			
89BL-47	89BL-48 ✓	90 0 0	93 3 39 ✓	11.229 ✓	-0.600	1	11.213	-1	-131056.057	-69460.731	10.145	-6.076855	
89BL-48	89BL-34 ✓	90 0 0	3 3 39 ✓	19.992 ✓	19.963	0	1.067	1	-131036.094	-69459.663	22.425	447.670275	
89BL-34	89BL-35 ✓	90 0 0	273 3 39 ✓	11.229 ✓	0.600	-1	-11.213	0	-131035.495	-69470.876	12.280	7.355720	
89BL-35	89BL-47 ✓	90 0 0	183 3 39 ✓	19.992 ✓	-19.963	0	-1.067	0	-131055.458	-69471.943	0.000	0.000000	
TOTAL..	ソツカクスウ= 4	360 0 0		62.442	0.000	0 ✓	0.000	0 ✓			ハ"イメンセキ=	448.949140	
											1/2=	224.47	+0.00
											メンセキ=	224.47 ✓	

\*\*\* ムセキ ケイサン (ハ"イオウキヨホウ) \*\*\*

チクメイ ... ミヤコタ"チク トチクカクセイリシ"キ"ヨウ

ペリ NO... 89BL(7)✓

NO.	NO.	ANGLE	AZIMUTH	LENGTH	DX	*	DY	*	X	Y	DMD	2A	カーブ"ムセキ
89BL-34	89BL-48✓		183 3 39						-131056.057	-69460.731			
89BL-48	89BL-49✓	90 0 0	93 3 39✓	1.418✓	-0.076	0	1.416	1	-131056.133	-69459.314	0.349	-0.026524	
89BL-49	89BL-33✓	90 0 0	3 3 39✓	19.992✓	19.963	0	1.067	0	-131036.170	-69458.247	2.833	56.555179	
89BL-33	89BL-34✓	90 0 0	273 3 39✓	1.418✓	0.076	0	-1.416	0	-131036.094	-69459.663	2.484	0.188784	
89BL-34	89BL-48✓	90 0 0	183 3 39✓	19.992✓	-19.963	0	-1.067	-1	-131056.057	-69460.731	0.000	0.000000	
TOTAL..	ソツカク入ウ= 4	360 0 0		42.820	0.000	0✓	0.000	0✓			ハ"イムセキ=	56.717439	
											1/2=	28.35	+0.00
											ムセキ=	28.35✓	

ペリ NO... 89BL(8)✓

89BL-33	89BL-49✓		183 3 39						-131056.133	-69459.314			
89BL-49	89BL-50✓	90 0 0	93 3 39✓	15.487✓	-0.827	-1	15.465	-1	-131056.961	-69443.850	14.397	-11.920716	
89BL-50	89BL-32✓	90 0 0	3 3 39✓	19.992✓	19.963	1	1.067	1	-131036.997	-69442.782	30.929	617.466556	
89BL-32	89BL-33✓	90 0 0	273 3 39✓	15.487✓	0.827	0	-15.465	0	-131036.170	-69458.247	16.532	13.671964	
89BL-33	89BL-49✓	90 0 0	183 3 39✓	19.992✓	-19.963	0	-1.067	0	-131056.133	-69459.314	0.000	0.000000	
TOTAL..	ソツカク入ウ= 4	360 0 0		70.958	0.000	0✓	0.000	0✓			ハ"イムセキ=	619.217804	
											1/2=	309.60	+0.00
											ムセキ=	309.60✓	

\*\*\* メンセキ ケイザン (ハ"イオウキヨホウ) \*\*\*

チクメイ ... ミヤコタ"チク トチクカクセイリシ"キ"ヨウ

セリ NO... 89BL(9)✓

NO.	NO.	ANGLE	AZIMUTH	LENGTH	DX	*	DY	*	X	Y	DMD	2A	カ-フ"メンセキ
89BL-32	89BL-50✓		183 3 39						-131056.961	-69443.850			
89BL-50	89BL-52✓	90 0 0	93 3 39✓	10.113✓	-0.540	0	10.099	0	-131057.501	-69433.751	9.031	-4.876740	
89BL-52	89BL-31✓	90 0 0	3 3 39✓	19.992✓	19.963	1	1.067	1	-131037.537	-69432.683	20.198	403.232872	
89BL-31	89BL-32✓	90 0 0	273 3 39✓	10.113✓	0.540	0	-10.099	0	-131036.997	-69442.782	11.167	6.030180	
89BL-32	89BL-50✓	90 0 0	183 3 39✓	19.992✓	-19.963	-1	-1.067	-1	-131056.961	-69443.850	0.000	0.000000	
TOTAL..	ソツカクスク= 4	360 0 0		60.210	0.000	0✓	0.000	0✓			ハ"イメンセキ=	404.386312	
											1/2=	202.19	+0.00
											メンセキ=	202.19✓	

セリ NO... 89BL(10)✓

89BL-31	89BL-52✓		183 3 39						-131057.501	-69433.751			
89BL-52	89BL-53✓	90 0 0	93 3 39✓	9.380✓	-0.501	0	9.367	0	-131058.002	-69424.384	8.299	-4.157799	
89BL-53	89BL-30✓	90 0 0	3 3 39✓	19.992✓	19.963	1	1.067	0	-131038.038	-69423.317	18.733	373.985612	
89BL-30	89BL-31✓	90 0 0	273 3 39✓	9.380✓	0.501	0	-9.367	1	-131037.537	-69432.683	10.434	5.227434	
89BL-31	89BL-52✓	90 0 0	183 3 39✓	19.992✓	-19.963	-1	-1.067	-1	-131057.501	-69433.751	0.000	0.000000	
TOTAL..	ソツカクスク= 4	360 0 0		58.744	0.000	0✓	0.000	0✓			ハ"イメンセキ=	375.055247	
											1/2=	187.52	+0.00
											メンセキ=	187.52✓	

\*\*\* ムセキ ケイサン (ハ"イオウキヨホウ) \*\*\*

チクメイ ... ミヤコタ"チク トチクカクセイリヨ"キ"ヨウ

セリ NO... 89BL(11) ✓

NO.	NO.	ANGLE	AZIMUTH	LENGTH	DX	*	DY	*	X	Y	DMD	2A	カ-フ"ムセキ
89BL-30	89BL-53 ✓		183 3 39						-131058.002	-69424.384			
89BL-53	89BL-55 ✓	90 0 0	93 3 39 ✓	7.292 ✓	-0.389	0	7.282	0	-131058.391	-69417.102	6.215	-2.417635	
89BL-55	89BL-29 ✓	90 0 0	3 3 39 ✓	19.992 ✓	19.963	1	1.067	0	-131038.427	-69416.035	14.564	290.755696	
89BL-29	89BL-30 ✓	90 0 0	273 3 39 ✓	7.292 ✓	0.389	0	-7.282	0	-131038.038	-69423.317	8.349	3.247761	
89BL-30	89BL-53 ✓	90 0 0	183 3 39 ✓	19.992 ✓	-19.963	-1	-1.067	0	-131058.002	-69424.384	0.000	0.000000	
TOTAL..	ソツカクスウ= 4	360 0 0		54.568	0.000	0 ✓	0.000	0 ✓			ハ"イムセキ=	291.585822	
											1/2=	145.79	+0.00
											ムセキ=	145.79 ✓	

セリ NO... 89BL(12) ✓

89BL-29	89BL-55 ✓		183 3 39						-131058.391	-69417.102			
89BL-55	89BL-28 ✓	90 0 0	93 3 39 ✓	12.904 ✓	-0.689	0	12.886	0	-131059.080	-69404.216	11.819	-8.143291	
89BL-28	89BL-11 ✓	89 58 56	3 2 35 ✓	16.382 ✓	16.359	0	0.870	0	-131042.721	-69403.346	25.575	418.381425	
89BL-11	89BL-12 ✓	135 25 39	318 28 14 ✓	5.069 ✓	3.795	0	-3.361	0	-131038.926	-69406.707	23.084	87.603780	
89BL-12	89BL-29 ✓	134 35 25	273 3 39 ✓	9.341 ✓	0.499	0	-9.328	0	-131038.427	-69416.035	10.395	5.187105	
89BL-29	89BL-55 ✓	90 0 0	183 3 39 ✓	19.992 ✓	-19.963	-1	-1.067	0	-131058.391	-69417.102	0.000	0.000000	
TOTAL..	ソツカクスウ= 5	540 0 0		63.688	0.001	-1 ✓	0.000	0 ✓			ハ"イムセキ=	503.029019	
											1/2=	251.51	+0.00
											ムセキ=	251.51 ✓	



\*\*\* メンセキ ケイサン (ハ"イオウキヨホウ) \*\*\*

チクメイ ... ミヤコタ"チク トチクカクセイリシ"キ"ヨウ

セリ NO... 89BL(13) ✓

NO.	NO.	ANGLE	AZIMUTH	LENGTH	DX	*	DY	*	X	Y	DMD	2A	カーブ"メンセキ
89BL-54	89BL-27 ✓✓		183 3 39						-131078.138	-69422.312			
89BL-27	89BL-9 ✓✓	89 58 58	93 2 37 ✓✓	13.510 ✓✓	-0.717	0	13.491	0	-131078.855	-69408.821	12.423	-8.907291	
89BL-9	89BL-10 ✓✓	135 22 45	48 25 22 ✓✓	4.986 ✓✓	3.309	0	3.730	0	-131075.546	-69405.091	29.644	98.091996	
89BL-10	89BL-28 ✓✓	134 37 13	3 2 35 ✓✓	16.489 ✓✓	16.466	0	0.875	0	-131059.080	-69404.216	34.249	563.944034	
89BL-28	89BL-54 ✓✓	90 1 4	273 3 39 ✓✓	17.051 ✓✓	0.910	0	-17.027	-1	-131058.170	-69421.244	18.096	16.467360	
89BL-54	89BL-27 ✓✓	90 0 0	183 3 39 ✓✓	19.997 ✓✓	-19.968	0	-1.068	0	-131078.138	-69422.312	0.000	0.000000	
TOTAL..	ソツカクスタウ= 5	540	0 0	72.033	0.000	0 ✓✓	0.001	-1 ✓✓			ハ"イメンセキ=	669.596099	
											1/2=	334.79	+0.00
											メンセキ=	334.79 ✓✓	

セリ NO... 89BL(14) ✓

89BL-52	89BL-26 ✓✓		183 3 39						-131077.473	-69434.819			
89BL-26	89BL-27 ✓✓	89 58 58	93 2 37 ✓✓	12.525 ✓✓	-0.665	0	12.507	0	-131078.138	-69422.312	11.439	-7.606935	
89BL-27	89BL-54 ✓✓	90 1 2	3 3 39 ✓✓	19.997 ✓✓	19.968	0	1.068	0	-131058.170	-69421.244	25.014	499.479552	
89BL-54	89BL-52 ✓✓	90 0 0	273 3 39 ✓✓	12.525 ✓✓	0.669	0	-12.507	0	-131057.501	-69433.751	13.575	9.081675	
89BL-52	89BL-26 ✓✓	90 0 0	183 3 39 ✓✓	20.001 ✓✓	-19.972	0	-1.068	0	-131077.473	-69434.819	0.000	0.000000	
TOTAL..	ソツカクスタウ= 4	360	0 0	65.048	0.000	0 ✓✓	0.000	0 ✓✓			ハ"イメンセキ=	500.954292	
											1/2=	250.47	+0.00
											メンセキ=	250.47 ✓✓	

\*\*\* ムセキ ケイサン (ハ"イオウキヨホウ) \*\*\*

チクメイ ... ミヤコタ"チク トチクカクセイリシ"キ"ヨウ

ペリ NO... 89BL(15)✓

NO.	NO.	ANGLE	AZIMUTH	LENGTH	DX	*	DY	*	X	Y	DMD	2A	カーブ"ムセキ
89BL-51	89BL-25✓		183 3 39						-131077.128	-69441.315			
89BL-25	89BL-26✓	89 58 58	93 2 37✓	6.505✓	-0.345	0	6.496	0	-131077.473	-69434.819	5.428	-1.872660	
89BL-26	89BL-52✓	90 1 2 3	3 39✓	20.001✓	19.972	0	1.068	0	-131057.501	-69433.751	12.992	259.476224	
89BL-52	89BL-51✓	90 0 0 273	3 39✓	6.505✓	0.347	1	-6.496	0	-131057.153	-69440.247	7.564	2.632272	
89BL-51	89BL-25✓	90 0 0 183	3 39✓	20.004✓	-19.975	0	-1.068	0	-131077.128	-69441.315	0.000	0.000000	
TOTAL..	ソツカクスウ= 4	360 0 0		53.015	-0.001	1✓	0.000	0✓			ハ"イムセキ=	260.235836	
											1/2=	130.11	+0.00
											ムセキ=	130.11✓	

ペリ NO... 89BL(16)✓

89BL-49	89BL-24✓		183 3 39						-131076.114	-69460.383			
89BL-24	89BL-25✓	89 58 58	93 2 37✓	19.095✓	-1.014	0	19.068	0	-131077.128	-69441.315	17.999	-18.250986	
89BL-25	89BL-51✓	90 1 2 3	3 39✓	20.004✓	19.975	0	1.068	0	-131057.153	-69440.247	38.135	761.746625	
89BL-51	89BL-49✓	90 0 0 273	3 39✓	19.095✓	1.020	0	-19.068	1	-131056.133	-69459.314	20.136	20.538720	
89BL-49	89BL-24✓	90 0 0 183	3 39✓	20.010✓	-19.931	0	-1.068	-1	-131076.114	-69460.383	0.000	0.000000	
TOTAL..	ソツカクスウ= 4	360 0 0		78.204	0.000	0✓	0.000	0✓			ハ"イムセキ=	764.034359	
											1/2=	382.01	+0.00
											ムセキ=	382.01✓	

\*\*\* メンセキ ケイサン (ハ"イオウキヨホウ) \*\*\*

チクメイ ... ミヤコタ"チク トチクカクセイリシ"キ"ヨウ

セリ NO... 89BL(17)✓

NO.	NO.	ANGLE	AZIMUTH	LENGTH	DX	*	DY	*	X	Y	DMD	2A	カ-フ"メンセキ
89BL-47	89BL-23 ✓		183 3 39						-131075.442	-69473.013			
89BL-23	89BL-24 ✓	89 58 58	93 2 37 ✓	12.648 ✓	-0.672	0	12.630	0	-131076.114	-69460.383	11.560	-7.768320	
89BL-24	89BL-49 ✓	90 1 2 3	3 39 ✓	20.010 ✓	19.981	0	1.068	1	-131056.133	-69459.314	25.259	504.700079	
89BL-49	89BL-47 ✓	90 0 0 273	3 39 ✓	12.647 ✓	0.675	0	-12.629	0	-131055.458	-69471.943	13.699	9.246825	
89BL-47	89BL-23 ✓	90 0 0 183	3 39 ✓	20.013 ✓	-19.984	0	-1.069	-1	-131075.442	-69473.013	0.000	0.000000	
TOTAL..	ソツカク入ウ= 4	360 0 0		65.318	0.000	0 ✓	0.000	0 ✓			ハ"イメンセキ=	506.178584	
											1/2=	253.08	+0.00
											メンセキ=	253.08 ✓	

セリ NO... 89BL(18)✓

89BL-45	89BL-22 ✓		183 3 39						-131074.853	-69488.985			
89BL-22	89BL- 6 ✓	88 1 20	91 4 59 ✓	2.472 ✓	-0.047	0	2.472	-1	-131074.900	-69486.514	1.388	-0.065236	
89BL- 6	89BL- 7 ✓	180 24 27	91 29 26 ✓	4.498 ✓	-0.117	0	4.496	0	-131075.017	-69482.018	8.355	-0.977535	
89BL- 7	89BL- 8 ✓	180 52 2	92 21 28 ✓	4.497 ✓	-0.185	0	4.493	0	-131075.202	-69477.525	17.344	-3.208640	
89BL- 8	89BL-23 ✓	180 41 9	93 2 37 ✓	4.518 ✓	-0.240	0	4.512	0	-131075.442	-69473.013	26.349	-6.323760	
89BL-23	89BL-47 ✓	90 1 2 3	3 39 ✓	20.013 ✓	19.984	0	1.069	1	-131055.458	-69471.943	31.931	638.109104	
89BL-47	89BL-45 ✓	90 0 0 273	3 39 ✓	15.982 ✓	0.853	0	-15.959	0	-131054.605	-69487.902	17.042	14.536826	
89BL-45	89BL-22 ✓	90 0 0 183	3 39 ✓	20.277 ✓	-20.248	0	-1.083	0	-131074.853	-69488.985	0.000	0.000000	
TOTAL..	ソツカク入ウ= 7	900 0 0		72.257	0.000	0 ✓	0.000	0 ✓			ハ"イメンセキ=	642.070759	
											1/2=	321.03	+0.00
											メンセキ=	321.03 ✓	

\*\*\* 測点キ ケイサン (ハイイウキヨホウ) \*\*\*

チクメイ ... ミヤコタチク トチクカクセイリシキヨウ

セリ NO... 89BL(19)✓

NO.	NO.	ANGLE	AZIMUTH	LENGTH	DX	*	DY	*	X	Y	DMD	2A	カ-フイメキ
89BL-43	89BL-21✓		183 3 39						-131074.829	-69490.277			
89BL-21	89BL-22✓	88 1 20	91 4 59✓	1.292✓	-0.024	0	1.292	0	-131074.853	-69488.985	0.206	-0.004944	
89BL-22	89BL-45✓	91 58 40	3 3 39✓	20.277✓	20.248	0	1.083	0	-131054.605	-69487.902	2.581	52.260088	
89BL-45	89BL-43✓	90 0 0	273 3 39✓	1.292✓	0.069	0	-1.290	1	-131054.536	-69489.191	2.375	0.163875	
89BL-43	89BL-21✓	90 0 0	183 3 39✓	20.322✓	-20.293	0	-1.085	-1	-131074.829	-69490.277	0.000	0.000000	
TOTAL..	ソツカクスウ= 4	360 0 0		43.183	0.000	0✓	0.000	0✓			ハイイウキキ=	52.419019	
											1/2=	26.20	+0.00
											メキキ=	26.20✓	

セリ NO... 89BL(20)✓

89BL-40	89BL- 1✓		183 1 51						-131071.402	-69506.083			
89BL- 1	89BL- 2✓	132 34 30	135 36 21✓	4.949✓	-3.536	0	3.462	0	-131074.938	-69502.621	2.524	-8.924864	
89BL- 2	89BL- 3✓	132 36 37	88 12 58✓	3.566✓	0.111	0	3.564	0	-131074.827	-69499.057	9.550	1.060050	
89BL- 3	89BL- 4✓	180 55 45	89 8 43✓	3.553✓	0.053	0	3.553	0	-131074.774	-69495.504	16.667	0.883351	
89BL- 4	89BL- 5✓	181 22 39	90 31 22✓	4.494✓	-0.041	0	4.494	0	-131074.815	-69491.010	24.714	-1.013274	
89BL- 5	89BL-21✓	180 33 37	91 4 59✓	0.733✓	-0.014	0	0.733	0	-131074.829	-69490.277	29.941	-0.419174	
89BL-21	89BL-43✓	91 58 40	3 3 39✓	20.322✓	20.293	0	1.085	1	-131054.536	-69489.191	31.760	644.505680	
89BL-43	89BL-40✓	90 0 0	273 3 39✓	15.976✓	0.853	0	-15.953	-1	-131053.683	-69505.145	16.892	14.408876	
89BL-40	89BL- 1✓	89 58 12	183 1 51✓	17.744✓	-17.719	0	-0.938	0	-131071.402	-69506.083	0.000	0.000000	
TOTAL..	ソツカクスウ= 8	1080 0 0		71.337	0.000	0✓	0.000	0✓			ハイイウキキ=	650.500645	
											1/2=	325.25	+0.00
											メキキ=	325.25✓	

\*\*\* ケツコウ トラハース \*\*\*

チクメイ ... ミヤコタチ トチクカクセイリシキヨウ

NO.	NO.	ANGLE	*	AZIMUTH	LENGTH	DX	*	DY	*	X	Y	NO.
	89BL- 5 ✓									-131074.815	-69491.010	89BL- 5
89BL- 5	89BL-21 ✓		91	4 59 ✓	0.733 ✓	-0.014	0	0.733	0	-131074.829	-69490.277	89BL-21
89BL-21	89BL-22 ✓	180 0 0	91	4 59 ✓	1.292 ✓	-0.024	0	1.292	0	-131074.853	-69488.985	89BL-22
89BL-22	89BL- 6 ✓	180 0 0	91	4 59 ✓	2.472 ✓	-0.047	0	2.472	-1	-131074.900	-69486.514	89BL- 6
	TOTAL..	360 0 0			4.497 ✓	-0.085	0 ✓	4.497	-1 ✓			
	89BL- 8 ✓									-131075.202	-69477.525	89BL- 8
89BL- 8	89BL-23 ✓		93	2 37 ✓	4.518 ✓	-0.240	0	4.512	0	-131075.442	-69473.013	89BL-23
89BL-23	89BL-24 ✓	180 0 0	93	2 37 ✓	12.648 ✓	-0.672	0	12.630	0	-131076.114	-69460.383	89BL-24
89BL-24	89BL-25 ✓	180 0 0	93	2 37 ✓	19.095 ✓	-1.014	0	19.068	0	-131077.128	-69441.315	89BL-25
89BL-25	89BL-26 ✓	180 0 0	93	2 37 ✓	6.505 ✓	-0.345	0	6.496	0	-131077.473	-69434.819	89BL-26
89BL-26	89BL-27 ✓	180 0 0	93	2 37 ✓	12.525 ✓	-0.665	0	12.507	0	-131078.138	-69422.312	89BL-27
89BL-27	89BL- 9 ✓	180 0 0	93	2 37 ✓	13.510 ✓	-0.717	0	13.491	0	-131078.855	-69408.821	89BL- 9
	TOTAL..	900 0 0			68.801 ✓	-3.653	0 ✓	68.704	0 ✓			
	89BL-10 ✓									-131075.546	-69405.091	89BL-10
89BL-10	89BL-28 ✓		3	2 35 ✓	16.489 ✓	16.466	0	0.875	0	-131059.080	-69404.216	89BL-28
89BL-28	89BL-11 ✓	180 0 0	3	2 35 ✓	16.382 ✓	16.359	0	0.870	0	-131042.721	-69403.346	89BL-11
	TOTAL..	180 0 0			32.871 ✓	32.825	0 ✓	1.745	0 ✓			
	89BL-12 ✓									-131038.926	-69406.707	89BL-12
89BL-12	89BL-29 ✓		273	3 39 ✓	9.341 ✓	0.499	0	-9.328	0	-131038.427	-69416.035	89BL-29
89BL-29	89BL-30 ✓	180 0 0	273	3 39 ✓	7.292 ✓	0.389	0	-7.282	0	-131038.038	-69423.317	89BL-30
89BL-30	89BL-31 ✓	180 0 0	273	3 39 ✓	9.380 ✓	0.501	0	-9.367	1	-131037.537	-69432.683	89BL-31

\*\*\* ケツコウ トラハ"-ス \*\*\*

チクメイ ... ミヤコタチク トチクカクセイリシ"キ"ヨウ

NO.	NO.	ANGLE	*	AZIMUTH	LENGTH	DX	*	DY	*	X	Y	NO.
89BL-31	89BL-32✓	180 0 0		273 3 39✓	10.113✓	0.540	0	-10.099	0	-131036.997	-69442.782	89BL-32
89BL-32	89BL-33✓	180 0 0		273 3 39✓	15.487✓	0.827	0	-15.465	0	-131036.170	-69458.247	89BL-33
89BL-33	89BL-34✓	180 0 0		273 3 39✓	1.418✓	0.076	0	-1.416	0	-131036.094	-69459.663	89BL-34
89BL-34	89BL-35✓	180 0 0		273 3 39✓	11.229✓	0.600	-1	-11.213	0	-131035.495	-69470.876	89BL-35
89BL-35	89BL-36✓	180 0 0		273 3 39✓	11.519✓	0.615	-1	-11.503	1	-131034.881	-69482.378	89BL-36
89BL-36	89BL-37✓	180 0 0		273 3 39✓	5.146✓	0.275	0	-5.139	0	-131034.606	-69487.517	89BL-37
89BL-37	89BL-38✓	180 0 0		273 3 39✓	2.879✓	0.154	0	-2.875	0	-131034.452	-69490.392	89BL-38
89BL-38	89BL-39✓	180 0 0		273 3 39✓	3.441✓	0.184	0	-3.436	0	-131034.268	-69493.828	89BL-39
89BL-39	89BL-13✓	180 0 0		273 3 39✓	6.677✓	0.357	0	-6.667	0	-131033.911	-69500.495	89BL-13
	TOTAL..	1980 0 0			93.922✓	5.017	-2✓	-93.790	2✓			
	89BL-14✓									-131037.254	-69504.275	89BL-14
89BL-14	89BL-40✓			183 1 51✓	16.452✓	-16.429	0	-0.870	0	-131053.683	-69505.145	89BL-40
89BL-40	89BL-1✓	180 0 0		183 1 51✓	17.744✓	-17.719	0	-0.938	0	-131071.402	-69506.083	89BL-1
	TOTAL..	180 0 0			34.196✓	-34.148	0✓	-1.808	0✓			
	89BL-40✓									-131053.683	-69505.145	89BL-40
89BL-40	89BL-41✓			93 3 39✓	10.265✓	-0.548	0	10.250	0	-131054.231	-69494.895	89BL-41
89BL-41	89BL-42✓	180 0 0		93 3 39✓	3.441✓	-0.184	0	3.436	0	-131054.415	-69491.459	89BL-42
89BL-42	89BL-44✓	180 0 0		93 3 39✓	2.879✓	-0.154	0	2.875	0	-131054.569	-69488.584	89BL-44
89BL-44	89BL-46✓	180 0 0		93 3 39✓	5.146✓	-0.275	1	5.139	-1	-131054.843	-69483.446	89BL-46
89BL-46	89BL-47✓	180 0 0		93 3 39✓	11.519✓	-0.615	0	11.503	0	-131055.458	-69471.943	89BL-47
89BL-47	89BL-48✓	180 0 0		93 3 39✓	11.229✓	-0.600	1	11.213	-1	-131056.057	-69460.731	89BL-48
89BL-48	89BL-49✓	180 0 0		93 3 39✓	1.418✓	-0.076	0	1.416	1	-131056.133	-69459.314	89BL-49

\*\*\* カツコウ トラハ"-ス \*\*\*

チクメイ ... ミヤコタ"チク トチクカクセイリシ"キ"ヨウ

NO.	NO.	ANGLE	*	AZIMUTH	LENGTH	DX	*	DY	*	X	Y	NO.
89BL-49	89BL-50 ✓	180 0 0		93 3 39 ✓	15.487 ✓	-0.827	-1	15.465	-1	-131056.961	-69443.850	89BL-50
89BL-50	89BL-52 ✓	180 0 0		93 3 39 ✓	10.113 ✓	-0.540	0	10.099	0	-131057.501	-69433.751	89BL-52
89BL-52	89BL-53 ✓	180 0 0		93 3 39 ✓	9.380 ✓	-0.501	0	9.367	0	-131058.002	-69424.384	89BL-53
89BL-53	89BL-55 ✓	180 0 0		93 3 39 ✓	7.292 ✓	-0.389	0	7.282	0	-131058.391	-69417.102	89BL-55
89BL-55	89BL-28 ✓	180 0 0		93 3 39 ✓	12.904 ✓	-0.689	0	12.886	0	-131059.080	-69404.216	89BL-28
	TOTAL..	1980 0 0			101.073 ✓	-5.398	1 ✓	100.931	-2 ✓			
	89BL-40 ✓									-131053.683	-69505.145	89BL-40
89BL-40	89BL-43 ✓			93 3 39 ✓	15.976 ✓	-0.853	0	15.953	1	-131054.536	-69489.191	89BL-43
89BL-43	89BL-45 ✓	180 0 0		93 3 39 ✓	1.292 ✓	-0.069	0	1.290	-1	-131054.605	-69487.902	89BL-45
89BL-45	89BL-47 ✓	180 0 0		93 3 39 ✓	15.982 ✓	-0.853	0	15.959	0	-131055.458	-69471.943	89BL-47
89BL-47	89BL-49 ✓	180 0 0		93 3 39 ✓	12.647 ✓	-0.675	0	12.629	0	-131056.133	-69459.314	89BL-49
89BL-49	89BL-51 ✓	180 0 0		93 3 39 ✓	19.095 ✓	-1.020	0	19.068	-1	-131057.153	-69440.247	89BL-51
89BL-51	89BL-52 ✓	180 0 0		93 3 39 ✓	6.505 ✓	-0.347	-1	6.496	0	-131057.501	-69433.751	89BL-52
89BL-52	89BL-54 ✓	180 0 0		93 3 39 ✓	12.525 ✓	-0.669	0	12.507	0	-131058.170	-69421.244	89BL-54
89BL-54	89BL-28 ✓	180 0 0		93 3 39 ✓	17.051 ✓	-0.910	0	17.027	1	-131059.080	-69404.216	89BL-28
	TOTAL..	1260 0 0			101.073 ✓	-5.396	-1 ✓	100.929	0 ✓			
	89BL-40 ✓									-131053.683	-69505.145	89BL-40
89BL-40	89BL-41 ✓			93 3 39 ✓	10.265 ✓	-0.548	0	10.250	0	-131054.231	-69494.895	89BL-41
89BL-41	89BL-42 ✓	180 0 0		93 3 39 ✓	3.441 ✓	-0.184	0	3.436	0	-131054.415	-69491.459	89BL-42
89BL-42	89BL-43 ✓	180 0 0		93 3 39 ✓	2.270 ✓	-0.121	0	2.267	1	-131054.536	-69489.191	89BL-43
89BL-43	89BL-44 ✓	180 0 0		93 3 39 ✓	0.609 ✓	-0.033	0	0.608	-1	-131054.569	-69488.584	89BL-44
89BL-44	89BL-45 ✓	180 0 0		93 3 39 ✓	0.683 ✓	-0.036	0	0.682	0	-131054.605	-69487.902	89BL-45

\*\*\* ケツコウ トラハ"-入 \*\*\*

チクメイ ... ミヤコタ"チク トチクカクセイリシ"キ"ヨウ

NO.	NO.	ANGLE	*	AZIMUTH	LENGTH	DX	*	DY	*	X	Y	NO.
89BL-45	89BL-46 ✓	180 0 0		93 3 39 ✓	4.463 ✓	-0.238	0	4.457	-1	-131054.843	-69483.446	89BL-46
89BL-46	89BL-47 ✓	180 0 0		93 3 39 ✓	11.519 ✓	-0.615	0	11.503	0	-131055.458	-69471.943	89BL-47
89BL-47	89BL-48 ✓	180 0 0		93 3 39 ✓	11.229 ✓	-0.600	1	11.213	-1	-131056.057	-69460.731	89BL-48
89BL-48	89BL-49 ✓	180 0 0		93 3 39 ✓	1.418 ✓	-0.076	0	1.416	1	-131056.133	-69459.314	89BL-49
89BL-49	89BL-50 ✓	180 0 0		93 3 39 ✓	15.487 ✓	-0.827	-1	15.465	-1	-131056.961	-69443.850	89BL-50
89BL-50	89BL-51 ✓	180 0 0		93 3 39 ✓	3.608 ✓	-0.193	1	3.603	0	-131057.153	-69440.247	89BL-51
89BL-51	89BL-52 ✓	180 0 0		93 3 39 ✓	6.505 ✓	-0.347	-1	6.496	0	-131057.501	-69433.751	89BL-52
89BL-52	89BL-53 ✓	180 0 0		93 3 39 ✓	9.380 ✓	-0.501	0	9.367	0	-131058.002	-69424.384	89BL-53
89BL-53	89BL-54 ✓	180 0 0		93 3 39 ✓	3.145 ✓	-0.168	0	3.141	-1	-131058.170	-69421.244	89BL-54
89BL-54	89BL-55 ✓	180 0 0		93 3 39 ✓	4.147 ✓	-0.221	0	4.141	1	-131058.391	-69417.102	89BL-55
89BL-55	89BL-28 ✓	180 0 0		93 3 39 ✓	12.904 ✓	-0.689	0	12.886	0	-131059.080	-69404.216	89BL-28
	TOTAL..	2700 0 0			101.073 ✓	-5.397	0 ✓	100.931	-2 ✓			
	89BL-35 ✓									-131035.495	-69470.876	89BL-35
89BL-35	89BL-47 ✓			183 3 39 ✓	19.992 ✓	-19.963	0	-1.067	0	-131055.458	-69471.943	89BL-47
89BL-47	89BL-23 ✓	180 0 0		183 3 39 ✓	20.013 ✓	-19.984	0	-1.069	-1	-131075.442	-69473.013	89BL-23
	TOTAL..	180 0 0			40.005 ✓	-39.947	0 ✓	-2.136	-1 ✓			
	89BL-33 ✓									-131036.170	-69458.247	89BL-33
89BL-33	89BL-49 ✓			183 3 39 ✓	19.992 ✓	-19.963	0	-1.067	0	-131056.133	-69459.314	89BL-49
89BL-49	89BL-24 ✓	180 0 0		183 3 39 ✓	20.010 ✓	-19.981	0	-1.068	-1	-131076.114	-69460.383	89BL-24
	TOTAL..	180 0 0			40.002 ✓	-39.944	0 ✓	-2.135	-1 ✓			
	89BL-31 ✓									-131037.537	-69432.683	89BL-31



\*\*\* ケツコウ トラハース \*\*\*

チクメイ ... ミヤコタチク トチクカクセイリシキヨウ

NO.	NO.	ANGLE	*	AZIMUTH	LENGTH	DX	*	DY	*	X	Y	NO.
89BL-31	89BL-52 ✓			183 3 39 ✓	19.992 ✓	-19.963	-1	-1.067	-1	-131057.501	-69433.751	89BL-52
89BL-52	89BL-26 ✓	180 0 0		183 3 39 ✓	20.001 ✓	-19.972	0	-1.068	0	-131077.473	-69434.819	89BL-26
	TOTAL...	180 0 0			39.993 ✓	-39.935	-1 ✓	-2.135	-1 ✓			