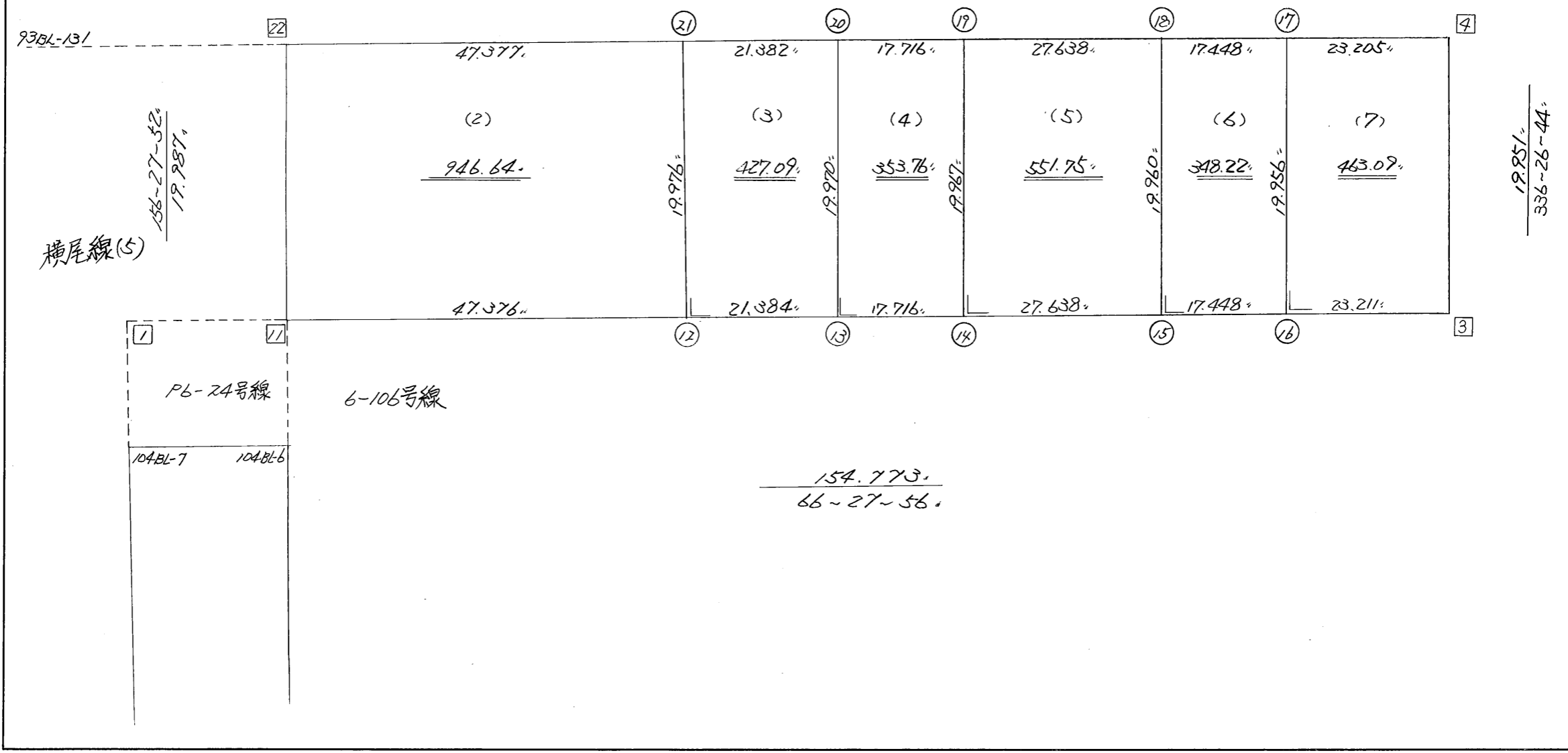


略 図

街区面積 = 3090.59<sup>m</sup>  
 画地面積 = 5090.59



246-28-43  
 154.766



街区点番号 3 ~ 4 , 筆界点番号 12 ~ 21 , 画地番号 ( 2 ) ~ ( 7 ) , 11, 22

\*\*\* メンセキ カイサン (ハイイオウキヨホウ) \*\*\*

チクメイ . . . . . ミヤコタチク トチクカクセイリシキヨウ

NO.	NO.	ANGLE	AZIMUTH	LENGTH	DX	*	DY	*	X	Y.	DMD	2A	カ-フ"メンセキ
90BL-22	90BL-11 ✓		156 27 52						-131028.526	-69670.035			
90BL-11	90BL- 3 ✓	90 0 4	66 27 56 ✓	154.773 ✓	61.801	0	141.899	0	-130966.725	-69528.136	149.880	9262.733880	
90BL- 3	90BL- 4 ✓	89 58 48	336 26 44 ✓	19.951 ✓	18.289	0	-7.973	0	-130948.436	-69536.109	283.806	5190.527934	
90BL- 4	90BL-22 ✓	90 1 59	246 28 43 ✓	154.766 ✓	-61.766	0	-141.907	0	-131010.202	-69678.016	133.926	-8272.073316	
90BL-22	90BL-11 ✓	89 59 9	156 27 52 ✓	19.987 ✓	-18.324	0	7.981	0	-131028.526	-69670.035	0.000	0.000000	
TOTAL	ソツカクスク= 4	360 0 0		349.477	0.000	0 ✓	0.000	0 ✓			ハイイメンセキ=	6181.188498	
											1/2=	3090.59	+0.00
											メンセキ=	3090.59 ✓	

\*\*\* 測点 ケイサン (ハイオウキヨホウ) \*\*\*

チクメイ ... ミヤコタチク トチクカクセイツシキヨウ

セリ NO... 90BL(2) ✓

NO.	NO.	ANGLE	AZIMUTH	LENGTH	DX	*	DY	*	X	Y	DMD	2A	カ-クメ測点
90BL-22	90BL-11 ✓		156 27 52						-131028.526	-69670.035			
90BL-11	90BL-12 ✓	90 0 4	66 27 56 ✓	47.376 ✓	18.917	0	43.435	0	-131009.609	-69626.600	51.416	972.636472	
90BL-12	90BL-21 ✓	90 0 0	336 27 56 ✓	19.976 ✓	18.314	1	-7.976	0	-130991.294	-69634.576	86.875	1591.115625	
90BL-21	90BL-22 ✓	90 0 47	246 28 43 ✓	47.377 ✓	-18.908	0	-43.440	0	-131010.202	-69678.016	35.459	-670.458772	
90BL-22	90BL-11 ✓	89 59 9	156 27 52 ✓	19.987 ✓	-18.324	0	7.981	0	-131028.526	-69670.035	0.000	0.000000	
TOTAL...	ソツカクスク= 4	360 0 0		134.716	-0.001	1 ✓	0.000	0 ✓			ハイメ測点=	1893.293325	
											1/2=	946.64	+0.00
											メ測点=	946.64 ✓	

セリ NO... 90BL(3) ✓

90BL-21	90BL-12 ✓		156 27 56						-131009.609	-69626.600			
90BL-12	90BL-13 ✓	90 0 0	66 27 56 ✓	21.384 ✓	8.539	0	19.605	0	-131001.070	-69606.995	27.581	235.514159	
90BL-13	90BL-20 ✓	90 0 0	336 27 56 ✓	19.970 ✓	18.309	0	-7.974	-1	-130982.761	-69614.970	39.211	717.914199	
90BL-20	90BL-21 ✓	90 0 47	246 28 43 ✓	21.382 ✓	-8.533	0	-19.605	-1	-130991.294	-69634.576	11.630	-99.238790	
90BL-21	90BL-12 ✓	89 59 13	156 27 56 ✓	19.976 ✓	-18.314	-1	7.976	0	-131009.609	-69626.600	0.000	0.000000	
TOTAL...	ソツカクスク= 4	360 0 0		82.712	0.001	-1 ✓	0.002	-2 ✓			ハイメ測点=	854.189568	
											1/2=	427.09	+0.00
											メ測点=	427.09 ✓	

\*\*\* 点検 検査 (ハイオウキヨウ) \*\*\*

チクメイ ... ミヤコタチク トチクカクセイリシキヨウ

NO.	NO.	ANGLE	AZIMUTH	LENGTH	DX	*	DY	*	X	Y.	DMD	2A.	カ-フマシキ
90BL-20	90BL-13		156 27 56						-131001.070	-69606.995			
90BL-13	90BL-14	90 0 0	66 27 56	17.716	7.074	0	16.242	0	-130993.996	-69590.753	24.217	171.311058	
90BL-14	90BL-19	90 0 0	336 27 56	19.967	18.306	0	-7.973	0	-130975.690	-69598.726	32.486	594.688716	
90BL-19	90BL-20	90 0 47	246 28 43	17.716	-7.070	-1	-16.244	0	-130982.761	-69614.970	8.269	-58.470099	
90BL-20	90BL-13	89 59 13	156 27 56	19.970	-18.309	0	7.974	1	-131001.070	-69606.995	0.000	0.000000	
TOTAL..	ソツカクシキ= 4	360 0 0		75.369	0.001	-1	-0.001	1			ハイマシキ=	707.529675	
											1/2=	353.76	+0.00
											マシキ=	353.76	

チクメイ NO... 90BL(5)

90BL-19	90BL-14		156 27 56						-130993.996	-69590.753			
90BL-14	90BL-15	90 0 0	66 27 56	27.638	11.036	0	25.339	0	-130982.960	-69565.414	33.312	367.631232	
90BL-15	90BL-18	90 0 0	336 27 56	19.960	18.300	0	-7.970	0	-130964.660	-69573.384	50.681	927.462300	
90BL-18	90BL-19	90 0 47	246 28 43	27.638	-11.030	0	-25.342	0	-130975.690	-69598.726	17.369	-191.580070	
90BL-19	90BL-14	89 59 13	156 27 56	19.967	-18.306	0	7.973	0	-130993.996	-69590.753	0.000	0.000000	
TOTAL..	ソツカクシキ= 4	360 0 0		95.203	0.000	0	0.000	0			ハイマシキ=	1103.513462	
											1/2=	551.75	+0.00
											マシキ=	551.75	

\*\*\* メンセキ ケイサン (ハイイウキヨホウ) \*\*\*

チクメイ ... ミヤコタチク トチクカクセイリシキヨウ

NO.	NO.	ANGLE	AZIMUTH	LENGTH	DX	*	DY	*	X	Y	DMD	2A	カ-フメンセキ
90BL-18	90BL-15 ✓		156 27 56						-130982.960	-69565.414			
90BL-15	90BL-16 ✓	90 0 0	66 27 56 ✓	17.448 ✓	6.967	0	15.997	0	-130975.993	-69549.417	23.967	166.978089	
90BL-16	90BL-17 ✓	90 0 0	336 27 56 ✓	19.956 ✓	18.296	0	-7.968	-1	-130957.697	-69557.386	31.995	585.380520	
90BL-17	90BL-18 ✓	90 0 47	246 28 43 ✓	17.448 ✓	-6.963	0	-15.998	0	-130964.660	-69573.384	8.028	-55.898964	
90BL-18	90BL-15 ✓	89 59 13	156 27 56 ✓	19.960 ✓	-18.300	0	7.970	0	-130982.960	-69565.414	0.000	0.000000	
TOTAL...	ソツカクスク= 4	360 0 0		74.812	0.000	0 ✓	0.001	-1 ✓			ハイイウキヨホウ=	696.459645	
											1/2=	348.22	+0.00
											メンセキ=	348.22 ✓	

チクメイ NO... 90BL(7) ✓

90BL-17	90BL-16 ✓		156 27 56						-130975.993	-69549.417			
90BL-16	90BL- 3 ✓	90 0 0	66 27 56 ✓	23.211 ✓	9.268	0	21.280	1	-130966.725	-69528.136	29.250	271.089000	
90BL- 3	90BL- 4 ✓	89 58 48	336 26 44 ✓	19.951 ✓	18.289	0	-7.973	0	-130948.436	-69536.109	42.558	778.343262	
90BL- 4	90BL-17 ✓	90 1 59	246 28 43 ✓	23.205 ✓	-9.261	0	-21.277	0	-130957.697	-69557.386	13.308	-123.245388	
90BL-17	90BL-16 ✓	89 59 13	156 27 56 ✓	19.956 ✓	-18.296	0	7.968	1	-130975.993	-69549.417	0.000	0.000000	
TOTAL...	ソツカクスク= 4	360 0 0		86.323	0.000	0 ✓	-0.002	2 ✓			ハイイウキヨホウ=	926.186874	
											1/2=	463.09	+0.00
											メンセキ=	463.09 ✓	

\*\*\* ケツコウ トラハース \*\*\*

チクメイ ... ミヤコタチク トチクカクセイリシキヨウ

NO.	NO.	ANGLE	*	AZIMUTH	LENGTH	DX	*	DY	*	X	Y	NO.
	90BL-11 ✓									-131028.526	-69670.035	90BL-11
90BL-11	90BL-12 ✓			66 27 56 ✓	47.376 ✓	18.917	0	43.435	0	-131009.609	-69626.600	90BL-12
90BL-12	90BL-13 ✓	180	0 0	66 27 56 ✓	21.384 ✓	8.539	0	19.605	0	-131001.070	-69606.995	90BL-13
90BL-13	90BL-14 ✓	180	0 0	66 27 56 ✓	17.716 ✓	7.074	0	16.242	0	-130993.996	-69590.753	90BL-14
90BL-14	90BL-15 ✓	180	0 0	66 27 56 ✓	27.638 ✓	11.036	0	25.339	0	-130982.960	-69565.414	90BL-15
90BL-15	90BL-16 ✓	180	0 0	66 27 56 ✓	17.448 ✓	6.967	0	15.997	0	-130975.993	-69549.417	90BL-16
90BL-16	90BL- 3 ✓	180	0 0	66 27 56 ✓	23.211 ✓	9.268	0	21.280	1	-130966.725	-69528.136	90BL- 3
	TOTAL..	900	0 0		154.773 ✓	61.801	0 ✓	141.898	1 ✓			
	90BL- 4 ✓									-130948.436	-69536.109	90BL- 4
90BL- 4	90BL-17 ✓			246 28 43 ✓	23.205 ✓	-9.261	0	-21.277	0	-130957.697	-69557.386	90BL-17
90BL-17	90BL-18 ✓	180	0 0	246 28 43 ✓	17.448 ✓	-6.963	0	-15.998	0	-130964.660	-69573.384	90BL-18
90BL-18	90BL-19 ✓	180	0 0	246 28 43 ✓	27.638 ✓	-11.030	0	-25.342	0	-130975.690	-69598.726	90BL-19
90BL-19	90BL-20 ✓	180	0 0	246 28 43 ✓	17.716 ✓	-7.070	-1	-16.244	0	-130982.761	-69614.970	90BL-20
90BL-20	90BL-21 ✓	180	0 0	246 28 43 ✓	21.382 ✓	-8.533	0	-19.605	-1	-130991.294	-69634.576	90BL-21
90BL-21	90BL-22 ✓	180	0 0	246 28 43 ✓	47.377 ✓	-18.908	0	-43.440	0	-131010.202	-69678.016	90BL-22
	TOTAL...	900	0 0		154.766 ✓	-61.765	-1 ✓	-141.906	-1 ✓			