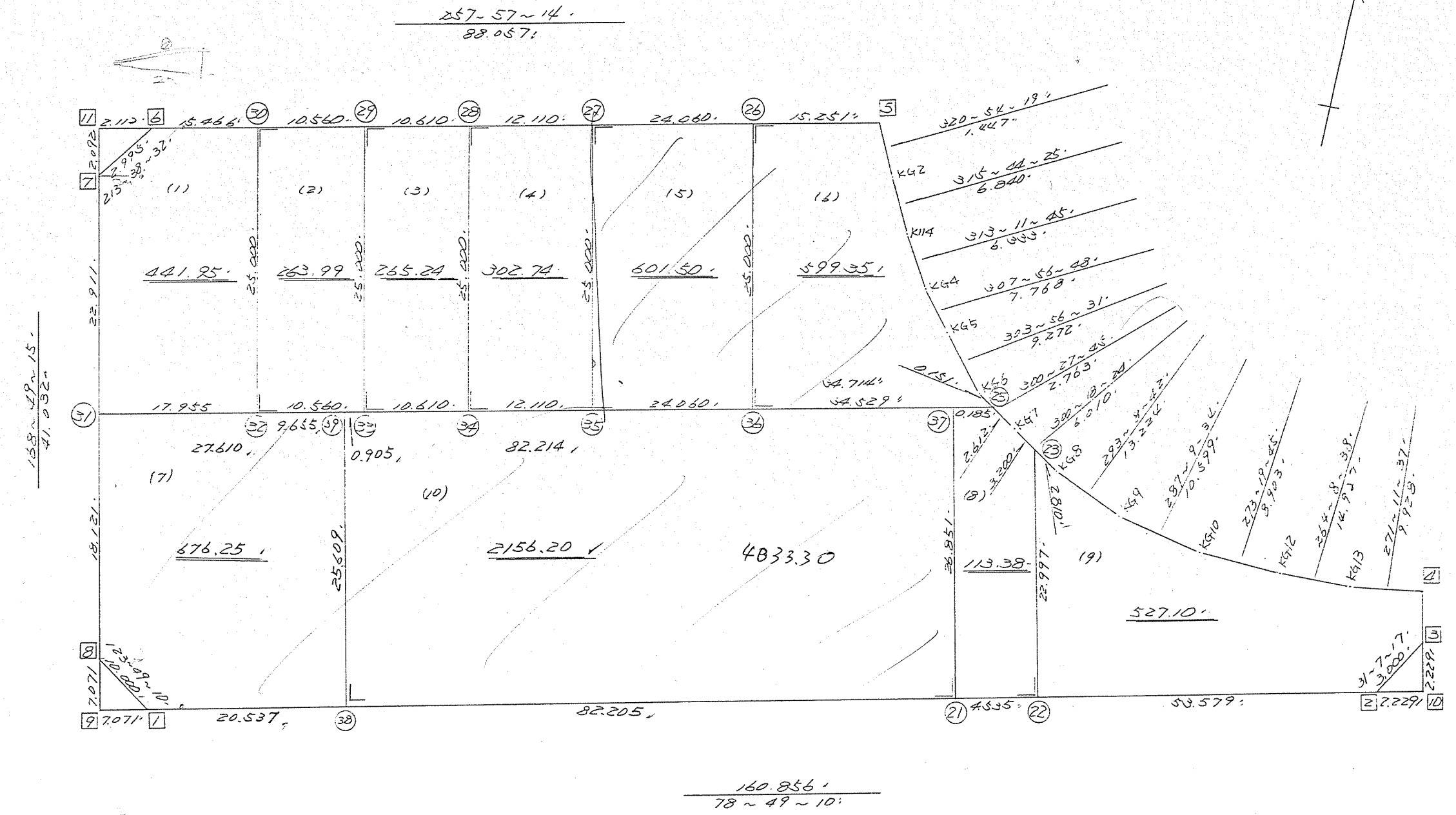


街区面積 =  $\frac{5947.74}{5947.70}$



街区点番号 1 ~ 11 境界点番号 (21) ~ (39) ロット番号 (1) ~ (9)

不二測量株式会社

\*\*\* メンセキ ケイサン (ハ"イオウキヨホウ) \*\*\*

テクメイ ... ハマツ イキ シヨウ

セリ NO... 14 BL

NO.	NO.	ANGLE	AZIMUTH	LENGTH	DX	*	DY	*	X	Y	DMD	2A	カーブメンセキ
14BL- 3	14BL- 1'		123 49 10						-143564.136	-69506.443			
14BL- 1	14BL- 2'	135 0 0	78 49 10'	160.856'	31.190	0	157.803	-1	-143532.946	-69348.641	166.110	5180.970900	
14BL- 2	14BL- 3'	132 18 7	31 7 17"	3.000'	2.568	0	1.551	1	-143530.378	-69347.089	325.464	835.791552	
14BL- 3	14BL- 4'	132 18 6	343 25 23'	0.689'	0.660	0	-0.197	0	-143529.718	-69347.286	326.819	215.700540	
14BL- 4	KG.13'	107 46 14	271 11 37'	9.928'	0.207	0	-9.926	0	-143529.511	-69357.212	316.696	65.556072	
KG.13	KG.12'	172 57 1	264 8 38'	14.927'	-1.523	0	-14.849	0	-143531.034	-69372.061	291.921	-444.595683	
KG.12	KG.10'	189 11 7	273 19 45'	8.903'	0.517	0	-8.888	0	-143530.517	-69380.949	268.184	138.651128	
KG.10	KG. 9'	193 49 49	287 9 34'	10.599'	3.127	0	-10.127	0	-143527.390	-69391.076	249.169	779.151463	
KG. 9	KG. 8'	185 59 8	293 8 42'	13.224'	5.198	0	-12.160	0	-143522.192	-69403.236	226.882	1179.332636	
KG. 8	KG. 7'	187 9 42	300 18 24'	6.010'	3.033	0	-5.189	0	-143519.159	-69408.425	209.533	635.513589	
KG. 7	KG. 6'	180 9 21	300 27 45'	2.763'	1.401	0	-2.382	0	-143517.758	-69410.807	201.962	282.948762	
KG. 6	KG. 5'	183 28 46	303 56 31'	9.272'	5.177	0	-7.692	0	-143512.581	-69418.499	191.888	993.404176	
KG. 5	KG. 4'	184 0 17	307 56 48'	7.768'	4.777	0	-6.126	0	-143507.804	-69424.625	178.070	850.640390	
KG. 4	K.114'	185 14 57	313 11 45'	6.333'	4.335	0	-4.617	0	-143503.469	-69429.242	167.327	725.362545	
K.114	KG. 2'	182 32 40	315 44 25'	6.840'	4.899	0	-4.774	0	-143498.570	-69434.016	157.936	773.728464	
KG. 2	14BL- 5'	185 9 54	320 54 19'	1.447'	1.123	0	-0.912	-1	-143497.447	-69434.929	152.249	170.975627	
14BL- 5	14BL- 6'	117 2 55	257 57 14'	38.057'	-18.377	0	-86.118	0	-143515.824	-69521.047	65.218	-1198.511186	
14BL- 6	14BL- 7'	135 41 18	213 38 32'	2.995'	-2.493	0	-1.659	0	-143518.317	-69522.706	-22.559	56.239587	
14BL- 7	14BL- 8'	135 10 43	168 49 15'	41.032'	-40.253	0	7.955	0	-143558.570	-69514.751	-16.263	654.634539	
14BL- 8	14BL- 1'	134 59 55	123 49 10'	10.000'	-5.566	0	8.308	0	-143564.136	-69506.443	0.000	0.000000	
TOTAL..	ツツカク= 19	3060	0 0	404.643	0.000	0	0.001	-1	3.927		ハ"イオウキ=	11895.495101	
											1/2=	5947.74	+0.00
											メンセキ=	5947.74	
									3,103	15.697			

チクメイ ... ハラツ イキ ヲシカク

レリ NO... 14BL (1)

NO.	AZIMUTH	LENGTH	DX	*	DY	*	X	Y	DMD	2A
14BL-31							-143540.793	-69518.264		
14BL-32	77 57 14	17.955	3.747	0	17.560	0	-143537.046	-69500.704	22.002	82.441494
14BL-30	347 57 14	25.000	24.449	1	-5.217	0	-143512.596	-69505.921	34.345	839.735250
14BL-6	257 57 14	15.466	-3.228	0	-15.125	-1	-143515.824	-69521.047	14.002	-45.198456
14BL-7	213 38 32	2.995	-2.493	0	-1.659	0	-143518.317	-69522.706	-2.783	6.938019
14BL-31	168 49 15	22.911	-22.476	0	4.442	0	-143540.793	-69518.264	0.000	0.000000
TOTAL...		84.327		1		-1			TOTAL...	883.916307
									メンセキ...	441.95

レリ NO... 14BL (2)

14BL-32							-143537.046	-69500.704		
14BL-33	77 57 14	10.560	2.204	0	10.327	0	-143534.842	-69490.377	15.544	34.258976
14BL-29	347 57 14	25.000	24.449	1	-5.217	0	-143510.392	-69495.594	20.654	504.990300
14BL-30	257 57 14	10.560	-2.204	0	-10.327	0	-143512.596	-69505.921	5.110	-11.262440
14BL-32	167 57 14	25.000	-24.449	-1	5.217	0	-143537.046	-69500.704	0.000	0.000000
TOTAL...		71.120		0		0			TOTAL...	527.986836
									メンセキ...	263.99

レリ NO... 14BL (3)

14BL-33							-143534.842	-69490.377		
14BL-34	77 57 14	10.610	2.214	0	10.376	0	-143532.628	-69480.001	15.593	34.522902
14BL-28	347 57 14	25.000	24.449	1	-5.217	0	-143508.178	-69485.218	20.752	507.386400
14BL-29	257 57 14	10.610	-2.214	0	-10.376	0	-143510.392	-69495.594	5.159	-11.422026
14BL-33	167 57 14	25.000	-24.449	-1	5.217	0	-143534.842	-69490.377	0.000	0.000000
TOTAL...		71.220		0		0			TOTAL...	530.487276
									メンセキ...	265.24

\*\*\* メンセキ ケイサン (ハイイウキヨホウ) \*\*\*

チクメイ ... ハマツ イキ ヲシカク

ポイント NO... 14BL (4) /

NO.	NO.	ANGLE	AZIMUTH	LENGTH	DX	*	DY	*	X	Y	DMD	2A	カ-フ"メンセキ
14BL-28	14BL-34'		167 57 14						-143532.628	-69480.001			
14BL-34	14BL-35'	90 0 0	77 57 14'	12.110"	2.527	0	11.843	0	-143530.101	-69468.158	17.060	43.110620	
14BL-35	14BL-27'	90 0 0	347 57 14'	25.000"	24.449	1	-5.217	0	-143505.651	-69473.375	23.686	579.122700	
14BL-27	14BL-28'	90 0 0	257 57 14'	12.110"	-2.527	0	-11.843	0	-143508.178	-69485.218	6.626	-16.743902	
14BL-28	14BL-34'	90 0 0	167 57 14'	25.000"	-24.449	-1	5.217	0	-143532.628	-69480.001	0.000	0.000000	
TOTAL..	ソツカク= 4	360 0 0		74.220	0.000	0	0.000	0					
											ハイイメンセキ=	605.489418	
											1/2=	302.74	+0.00
											メンセキ=	302.74	

ポイント NO... 14BL (5)

14BL-27	14BL-35'		167 57 14						-143530.101	-69468.158			
14BL-35	14BL-36'	90 0 0	77 57 14'	24.060"	5.021	1	23.530	1	-143525.079	-69444.627	28.748	144.372456	
14BL-36	14BL-26'	90 0 0	347 57 14'	25.000"	24.449	0	-5.217	-1	-143500.630	-69449.845	47.061	1150.594389	
14BL-26	14BL-27'	90 0 0	257 57 14'	24.060"	-5.021	0	-23.530	0	-143505.651	-69473.375	18.313	-91.949573	
14BL-27	14BL-35'	90 0 0	167 57 14'	25.000"	-24.449	-1	5.217	0	-143530.101	-69468.158	0.000	0.000000	
TOTAL..	ソツカク= 4	360 0 0		98.120	0.000	0	0.000	0					
											ハイイメンセキ=	1203.017272	
											1/2=	601.50	+0.00
											メンセキ=	601.50	



\*\*\* メンセキ ケイサン (ハ"イオウキヨホウ) \*\*\*

チクメイ ... ハマツ Iキ シユウケン

セリ NO... 148L (8)ノ

NO.	AZIMUTH	LENGTH	DX	*	DY	*	X	Y	DMD	2A
148L-21ノ							-143544.214	-69405.652		
148L-22ノ	78 49 10ノ	4.535ノ	0.879	0	4.449	0	-143543.335	-69401.203	9.655	8.486745
148L-23ノ	348 49 10ノ	22.997ノ	22.561	0	-4.459	0	-143520.774	-69405.662	9.645	217.600845
KG. 7ノ	300 18 24ノ	3.200ノ	1.615	0	-2.763	0	-143519.159	-69408.425	2.423	3.913145
148L-25ノ	300 27 45ノ	2.612ノ	1.324	1	-2.251	-1	-143517.834	-69410.677	-2.592	-3.434400
148L-37ノ	257 57 14ノ	0.185ノ	-0.039	0	-0.181	0	-143517.873	-69410.858	-5.025	0.195975
148L-21ノ	168 49 10ノ	26.851ノ	-26.341	0	5.206	0	-143544.214	-69405.652	0.000	0.000000
TOTAL...		60.380		1		-1			TOTAL...	226.762310
									メンセキ...	113.38

セリ NO... 148L (9)ノ

148L-22ノ							-143543.335	-69401.203		
148L- 2ノ	78 49 10ノ	53.579ノ	10.389	0	52.562	0	-143532.946	-69348.641	57.021	592.391169
148L- 3ノ	31 7 17ノ	3.000ノ	2.568	0	1.551	1	-143530.378	-69347.089	111.135	285.394680
148L- 4ノ	343 25 23ノ	0.689ノ	0.660	0	-0.197	0	-143529.718	-69347.286	112.490	74.243400
KG.13ノ	271 11 37ノ	9.928ノ	0.207	0	-9.926	0	-143529.511	-69357.212	102.367	21.189969
KG.12ノ	264 8 38ノ	14.927ノ	-1.523	0	-14.849	0	-143531.034	-69372.061	77.592	-118.172616
KG.10ノ	273 19 45ノ	8.903ノ	0.517	0	-8.888	0	-143530.517	-69380.949	53.855	27.843035
KG. 9ノ	287 9 34ノ	10.599ノ	3.127	0	-10.127	0	-143527.390	-69391.076	34.840	108.944680
KG. 8ノ	293 8 42ノ	13.224ノ	5.198	0	-12.160	0	-143522.192	-69403.236	12.553	65.250494
148L-23ノ	300 18 24ノ	2.810ノ	1.418	0	-2.426	0	-143520.774	-69405.662	-2.033	-2.882794
148L-22ノ	168 49 10ノ	22.997ノ	-22.561	0	4.459	0	-143543.335	-69401.203	0.000	0.000000
TOTAL...		140.656		0		1			TOTAL...	1054.202017
									メンセキ...	527.10

\*\*\* 測定データ (ハイボキヨボク) \*\*\*

チクマイ ... ハツツ エキ ヲシカク

セリ NO... 148L(7)

NO.	NO.	ANGLE	AZIMUTH	LENGTH	DX	*	DY	*	X	Y	DMD	2A	カーブ測定値
148L-3	148L-1		123 49 10						-143564.136	-69506.443			
148L-1	148L-38	135 0 0	73 49 10	20.537	3.982	0	20.147	0	-143560.154	-69486.296	28.455	113.307810	
148L-38	148L-39	90 0 0	348 49 10	25.609	25.123	0	-4.966	0	-143535.031	-69491.262	43.636	1096.267228	
148L-39	148L-31	89 8 4	257 57 14	27.610	-5.762	0	-27.002	0	-143540.793	-69518.264	11.668	-67.231016	
148L-31	148L-8	90 52 1	168 49 15	13.121	-17.777	0	3.513	0	-143558.570	-69514.751	-11.821	210.141917	
148L-3	148L-1	134 59 55	125 49 10	10.000	-5.566	0	8.308	0	-143564.136	-69506.443	0.000	0.000000	
TOTAL..	ツツカス= 5	540 0 0		101.877	0.000	0	0.000	0					ハイボキヨボク= 1352.485939

1/2= 676.24 +0.00

測定値= 676.24  
+ 0.01  
676.25

セリ NO... 148L(10)

148L-39	148L-38		168 49 10						-143560.154	-69486.296			
148L-38	148L-21	90 0 0	73 49 10	32.205	15.940	0	30.645	-1	-143544.214	-69405.652	35.610	1364.623400	
148L-21	148L-37	90 0 0	348 49 10	26.851	26.341	0	-5.206	0	-143517.373	-69410.853	161.048	4242.165368	
148L-37	148L-39	89 8 4	257 57 14	32.214	-17.158	0	-80.404	0	-143535.031	-69491.262	75.438	-1294.365204	
148L-39	148L-38	90 51 56	168 49 10	25.609	-25.123	0	4.966	0	-143560.154	-69486.296	0.000	0.000000	
TOTAL..	ツツカス= 4	360 0 0		216.879	0.000	0	0.001	-1					ハイボキヨボク= 4312.423564

1/2= 2156.21 +0.00

測定値= 2156.21  
- 0.01  
2156.20