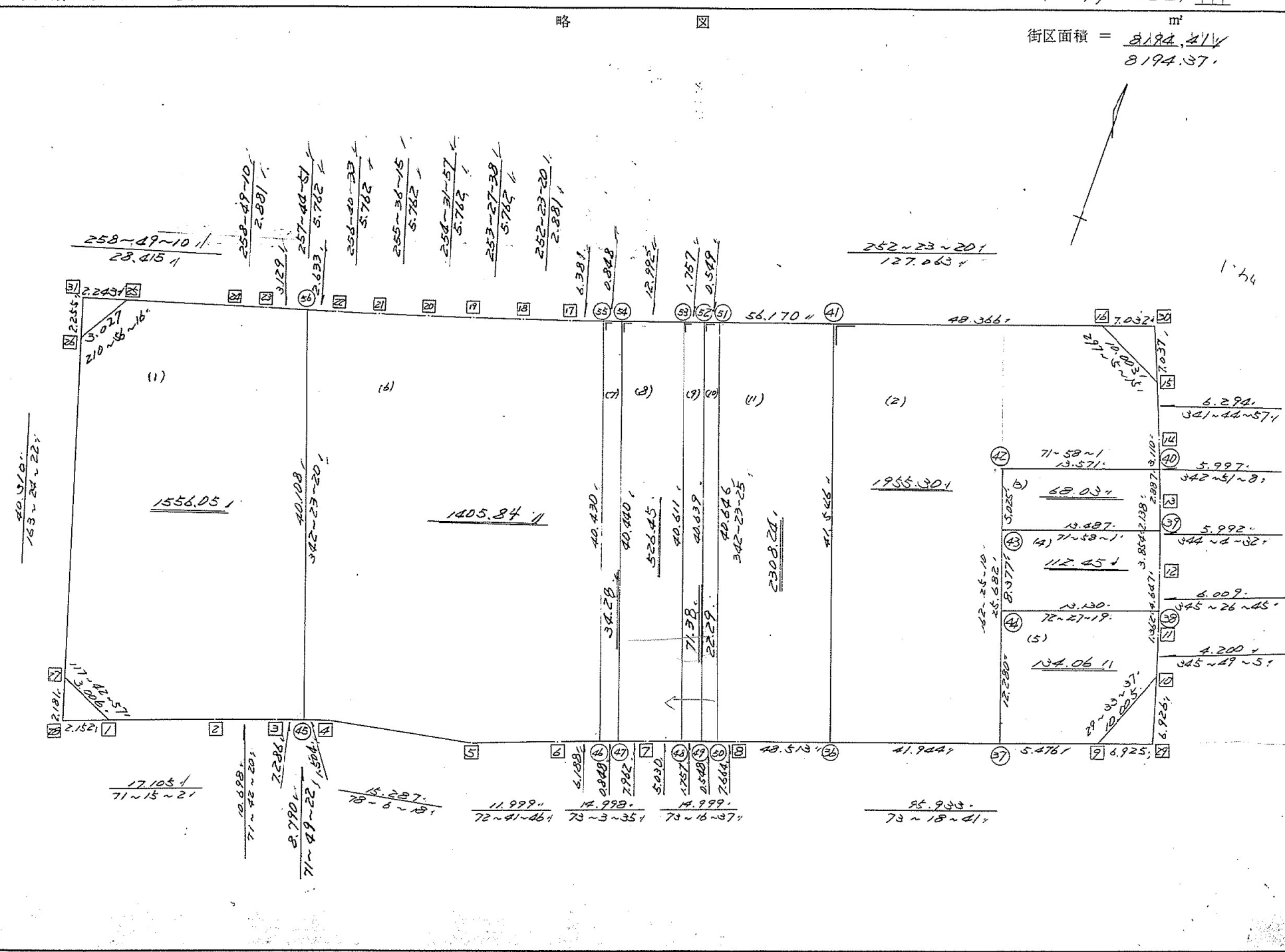


街区面積 =  $\frac{8194.414}{8194.37}$  m<sup>2</sup>



不二測量株式会社

\*\*\* メンピキ ケイサン (ハ"イロキヨボク) \*\*\*

チクメイ ... ハマツツ イチ シユウケン

ヒリ NO... 179L

NO.	AZIMUTH	LENGTH	DX	*	DY	*	X	Y	DMD	2A
17BL- 1//							-143587.967	-69316.226		
17BL- 2//	71 15 2//	17.105//	5.498	0	16.197	0	-143582.469	-69300.029	18.858	103.681284
17BL- 3//	71 42 20//	10.698//	3.358	0	10.157	0	-143579.111	-69289.872	45.212	151.821896
17BL- 4//	71 49 22//	8.790//	2.742	0	8.351	0	-143576.369	-69231.521	63.720	174.720240
17BL- 5//	78 6 18//	15.237//	3.151	0	14.959	0	-143573.218	-69266.562	87.030	274.231530
17BL- 6//	72 41 46//	11.999//	3.569	0	11.456	0	-143569.649	-69255.106	113.445	404.885205
17BL- 7//	73 3 35//	14.998//	4.370	0	14.347	0	-143565.279	-69240.759	139.248	608.513760
17BL- 8//	73 16 37//	14.999//	4.316	0	14.365	0	-143560.963	-69226.394	167.960	724.915360
17BL- 9//	73 18 41//	95.933//	27.549	0	91.892	0	-143533.414	-69134.502	274.217	7554.404133
17BL-10//	29 33 37//	10.005//	8.703	0	4.936	0	-143524.711	-69129.566	371.045	3229.204635
17BL-11//	345 49 5//	4.230//	4.072	0	-1.029	0	-143520.639	-69130.595	374.952	1526.804544
17BL-12//	345 26 45//	6.009//	5.316	0	-1.510	0	-143514.823	-69132.105	372.413	2165.954008
17BL-13//	344 4 32//	5.992//	5.762	0	-1.644	0	-143509.061	-69133.749	369.259	2127.670358
17BL-14//	342 51 8//	5.997//	5.730	0	-1.768	0	-143503.331	-69135.517	365.847	2096.303310
17BL-15//	341 44 57//	6.294//	5.977	0	-1.971	0	-143497.354	-69137.488	362.108	2164.319516
17BL-16//	297 5 15//	10.003//	4.555	0	-8.906	0	-143492.799	-69146.394	351.231	1599.857205
17BL-17//	252 23 20//	127.063//	-38.444	1	-121.108	0	-143531.242	-69267.502	221.217	-8504.245131
17BL-18//	252 23 20//	2.331//	-0.872	0	-2.746	0	-143532.114	-69270.248	97.363	-84.900536
17BL-19//	253 27 33//	5.762//	-1.640	0	-5.524	0	-143533.754	-69275.772	89.093	-146.112520
17BL-20//	254 31 57//	5.762//	-1.537	0	-5.553	0	-143535.291	-69281.325	78.016	-119.910592
17BL-21//	255 36 15//	5.762//	-1.433	1	-5.581	1	-143536.723	-69286.905	66.883	-95.776456
17BL-22//	256 40 33//	5.762//	-1.328	0	-5.607	0	-143538.051	-69292.512	55.696	-73.964288
17BL-23//	257 44 51//	5.762//	-1.223	0	-5.631	0	-143539.274	-69298.143	44.458	-54.372134
17BL-24//	258 49 10//	2.881//	-0.559	0	-2.826	0	-143539.833	-69300.969	36.001	-20.124559

\*\*\* メンピキ ケイサン (ハ"イロキヨホク) \*\*\*

チクメイ ... ハマツツ イチ シユウケン

ヒリ NO... 179L

NO.	AZIMUTH	LENGTH	DX	*	DY	*	X	Y	DMD	2A
17BL- 1//							-143587.967	-69316.226		
17BL- 2//	71 15 2//	17.105//	5.498	0	16.197	0	-143582.469	-69300.029	18.858	103.681284
17BL- 3//	71 42 20//	10.698//	3.358	0	10.157	0	-143579.111	-69289.872	45.212	151.821896
17BL- 4//	71 49 22//	8.790//	2.742	0	8.351	0	-143576.369	-69231.521	63.720	174.720240
17BL- 5//	78 6 18//	15.237//	3.151	0	14.959	0	-143573.218	-69266.562	87.030	274.231530
17BL- 6//	72 41 46//	11.999//	3.569	0	11.456	0	-143569.649	-69255.106	113.445	404.385205
17BL- 7//	73 3 35//	14.998//	4.370	0	14.347	0	-143565.279	-69240.759	139.248	608.513760
17BL- 8//	73 16 37//	14.999//	4.316	0	14.365	0	-143560.963	-69226.394	167.960	724.915360
17BL- 9//	73 18 41//	95.933//	27.549	0	91.892	0	-143533.414	-69134.502	274.217	7554.404133
17BL-10//	29 33 37//	10.005//	8.703	0	4.936	0	-143524.711	-69129.566	371.045	3229.204635
17BL-11//	345 49 5//	4.230//	4.072	0	-1.029	0	-143520.639	-69130.595	374.952	1526.804544
17BL-12//	345 26 45//	6.009//	5.316	0	-1.510	0	-143514.823	-69132.105	372.413	2165.954008
17BL-13//	344 4 32//	5.992//	5.762	0	-1.644	0	-143509.061	-69133.749	369.259	2127.670358
17BL-14//	342 51 8//	5.997//	5.730	0	-1.768	0	-143503.331	-69135.517	365.847	2096.303310
17BL-15//	341 44 57//	6.294//	5.977	0	-1.971	0	-143497.354	-69137.488	362.108	2164.319516
17BL-16//	297 5 15//	10.003//	4.555	0	-8.906	0	-143492.799	-69146.394	351.231	1599.857205
17BL-17//	252 23 20//	127.063//	-38.444	1	-121.108	0	-143531.242	-69267.502	221.217	-8504.245131
17BL-18//	252 23 20//	2.331//	-0.872	0	-2.746	0	-143532.114	-69270.248	97.363	-84.900536
17BL-19//	253 27 33//	5.762//	-1.640	0	-5.524	0	-143533.754	-69275.772	89.093	-146.112520
17BL-20//	254 31 57//	5.762//	-1.537	0	-5.553	0	-143535.291	-69281.325	78.016	-119.910592
17BL-21//	255 36 15//	5.762//	-1.433	1	-5.581	1	-143536.723	-69286.905	66.883	-95.776456
17BL-22//	256 40 33//	5.762//	-1.328	0	-5.607	0	-143538.051	-69292.512	55.696	-73.964288
17BL-23//	257 44 51//	5.762//	-1.223	0	-5.631	0	-143539.274	-69298.143	44.458	-54.372134
17BL-24//	258 49 10//	2.881//	-0.559	0	-2.826	0	-143539.833	-69300.969	36.001	-20.124559

\*\*\* メンピキ ケイサン (ハ"イロキヨホク) \*\*\*

チクメイ ... ハマツツ イチ ヲシケル

ヒリ NO... 179L

NO.	AZIMUTH	LENGTH	DX	*	DY	*	X	Y	DMD	2A
17BL- 1//							-143587.967	-69316.226		
17BL- 2//	71 15 2//	17.105//	5.498	0	16.197	0	-143582.469	-69300.029	18.858	103.681284
17BL- 3//	71 42 20//	10.698//	3.358	0	10.157	0	-143579.111	-69289.872	45.212	151.821896
17BL- 4//	71 49 22//	8.790//	2.742	0	8.351	0	-143576.369	-69231.521	63.720	174.720240
17BL- 5//	78 6 18//	15.237//	3.151	0	14.959	0	-143573.218	-69266.562	87.030	274.231530
17BL- 6//	72 41 46//	11.999//	3.569	0	11.456	0	-143569.649	-69255.106	113.445	404.385205
17BL- 7//	73 3 35//	14.998//	4.370	0	14.347	0	-143565.279	-69240.759	139.248	608.513760
17BL- 8//	73 16 37//	14.999//	4.316	0	14.365	0	-143560.963	-69226.394	167.960	724.915360
17BL- 9//	73 18 41//	95.933//	27.549	0	91.892	0	-143533.414	-69134.502	274.217	7554.404133
17BL-10//	29 33 37//	10.005//	8.703	0	4.936	0	-143524.711	-69129.566	371.045	3229.204635
17BL-11//	345 49 5//	4.230//	4.072	0	-1.029	0	-143520.639	-69130.595	374.952	1526.804544
17BL-12//	345 26 45//	6.009//	5.316	0	-1.510	0	-143514.823	-69132.105	372.413	2165.954008
17BL-13//	344 4 32//	5.992//	5.762	0	-1.644	0	-143509.061	-69133.749	369.259	2127.670358
17BL-14//	342 51 8//	5.997//	5.730	0	-1.768	0	-143503.331	-69135.517	365.847	2096.303310
17BL-15//	341 44 57//	6.294//	5.977	0	-1.971	0	-143497.354	-69137.488	362.108	2164.319516
17BL-16//	297 5 15//	10.003//	4.555	0	-8.906	0	-143492.799	-69146.394	351.231	1599.857205
17BL-17//	252 23 20//	127.063//	-38.444	1	-121.108	0	-143531.242	-69267.502	221.217	-8504.245131
17BL-18//	252 23 20//	2.331//	-0.872	0	-2.746	0	-143532.114	-69270.248	97.363	-84.900536
17BL-19//	253 27 33//	5.762//	-1.640	0	-5.524	0	-143533.754	-69275.772	89.093	-146.112520
17BL-20//	254 31 57//	5.762//	-1.537	0	-5.553	0	-143535.291	-69281.325	78.016	-119.910592
17BL-21//	255 36 15//	5.762//	-1.433	1	-5.581	1	-143536.723	-69286.905	66.883	-95.776456
17BL-22//	256 40 33//	5.762//	-1.328	0	-5.607	0	-143538.051	-69292.512	55.696	-73.964288
17BL-23//	257 44 51//	5.762//	-1.223	0	-5.631	0	-143539.274	-69298.143	44.458	-54.372134
17BL-24//	258 49 10//	2.881//	-0.559	0	-2.826	0	-143539.833	-69300.969	36.001	-20.124559

\*\*\* メンセキ ケイザン (ハ"イオウキヨホウ) \*\*\*

チクメイ ... ハマツ イキ シユウカン

セリ NO... 17BL

NO.	AZIMUTH	LENGTH	DX	*	DY	*	X	Y	DMD	2A
17BL-25 //	258 49 10 //	28.415 //	-5.510	1	-27.876	2	-143545.342	-69323.843	5.301	-29.203209
17BL-26 //	210 56 16 //	3.027 //	-2.596	0	-1.556	0	-143547.938	-69330.399	-24.129	62.638884
17BL-27 //	163 24 22 //	40.310 //	-38.631	0	11.512	0	-143586.569	-69318.887	-14.173	547.517163
17BL- 1 //	117 42 57 //	3.006 //	-1.398	0	2.661	0	-143587.967	-69316.226	0.000	0.000000
TOTAL...		474.702		3		3			TOTAL...	16388.833606
									メンセキ...	8194.41

チクメイ ... ハマツ イキ シロウ

\*\*\* メンベキ ケイサン (ハ"イウキヨホウ) \*\*\*

セリ NO... 178L(1)

NO.	NO.	ANGLE	AZIMUTH	LENGTH	DX	*	DY	*	X	Y	DMD	2A	カーブメンベキ
178L-27	178L-1 //		117 42 57						-143587.967	-69316.226			
178L-1	178L-2 //	133 32 5	71 15 2 //	17.105 //	5.498	0	16.197	0	-143582.469	-69300.029	18.858	103.681 284	
178L-2	178L-3 //	180 27 18	71 42 20 //	10.698 //	3.358	0	10.157	0	-143579.111	-69289.872	45.212	151.821896	
178L-3	178L-45 //	180 7 2	71 49 22 //	7.286 //	2.273	0	6.922	0	-143576.838	-69282.950	62.291	141.587443	
178L-45	178L-56 //	90 33 58	342 23 20 //	40.108 //	38.228	0	-12.135	0	-143538.610	-69295.085	57.078	2181.977784	
178L-56	178L-23 //	95 21 31	257 44 51 //	3.129 //	-0.664	0	-3.058	0	-143539.274	-69298.143	41.885	-27.811640	
178L-23	178L-24 //	181 4 19	258 49 10 //	2.881 //	-0.559	0	-2.826	0	-143539.833	-69300.969	36.001	-20.124559	
178L-24	178L-25 //	180 0 0	253 49 10 //	28.415 //	-5.510	1	-27.876	2	-143545.342	-69328.843	5.301	-29.203209	
178L-25	178L-26 //	132 7 6	210 56 16 //	3.027 //	-2.596	0	-1.556	0	-143547.938	-69330.399	-24.129	62.638884	
178L-26	178L-27 //	132 23 6	163 24 22 //	40.310 //	-38.631	0	11.512	0	-143586.569	-69318.887	-14.173	547.517163	
178L-27	178L-1 //	134 18 35	117 42 57 //	3.006 //	-1.398	0	2.661	0	-143587.967	-69316.226	0.000	0.000000	
TOTAL..	ツツカスツ= 10	1440	0 0	155.965	-0.001	1	-0.002	2					

ハ"イウキヨホウ= 3112.085046  
 1/2= 1556.04 +0.00  
 メンベキ= 1556.04  
 +0.01  
 1556.05

\*\*\* メンセキ ケイサン (ハチイオウキヨホウ) \*\*\*

チクメイ ... ハマツツ イキ シユウケン

セリ NO... 17BL (2)

NO.	AZIMUTH	LENGTH	DX	*	DY	*	X	Y	DMD	ZAI
17BL-36							-143547.031	-69179.924		
17BL-37	73 18 41	41.944	12.045	0	40.177	0	-143534.986	-69139.747	52.746	635.325570
17BL-42	342 25 10	25.682	24.482	1	-7.757	0	-143510.503	-69147.504	85.166	2085.119178
17BL-40	71 58 1	13.571	4.201	0	12.904	0	-143506.302	-69134.600	90.313	379.404913
17BL-14	342 51 8	3.110	2.972	-1	-0.917	0	-143503.331	-69135.517	102.300	303.933300
17BL-15	341.44 57	6.294	5.977	0	-1.971	0	-143497.354	-69137.488	99.412	594.185524
17BL-16	297 5 15	10.003	4.555	0	-8.906	0	-143492.799	-69146.394	88.535	403.276925
17BL-41	252 23 20	48.366	-14.633	0	-46.099	0	-143507.432	-69192.493	33.530	-490.644490
17BL-36	162 23 20	41.546	-39.599	0	12.570	-1	-143547.031	-69179.924	0.000	0.000000
TOTAL...		190.516		0		-1			TOTAL...	3910.600920
									メンセキ...	1955.30

セリ NO... 17BL (3)

17BL-43							-143515.293	-69145.986		
17BL-39	71 58 1	13.487	4.175	1	12.824	0	-143511.117	-69133.162	14.342	59.892192
17BL-13	344 4 32	2.138	2.056	0	-0.587	0	-143509.061	-69133.749	26.579	54.646424
17BL-40	342 51 8	2.887	2.759	0	-0.851	0	-143506.302	-69134.600	25.141	69.364019
17BL-42	251 58 1	13.571	-4.201	0	-12.904	0	-143510.503	-69147.504	11.386	-47.832586
17BL-43	162 25 10	5.025	-4.790	0	1.518	0	-143515.293	-69145.986	0.000	0.000000
TOTAL...		37.108		1		0			TOTAL...	136.070049
									メンセキ...	68.03

\*\*\* ムシセキ ケイサン (ハ<sup>ニ</sup>イウキヨホウ) \*\*\*

チクメイ ... ハマツ イキ シユウカン

ヒリ NO... 17BL (4)

NO.	AZIMUTH	LENGTH	DX	*	DY	*	X	Y	DMD	2A
17BL-44'							-143523.279	-69143.456		
17BL-38'	72 27 19'	13.130'	3.958	0	12.519	0	-143519.321	-69130.937	15.049	59.563942
17BL-12'	345 26 45'	4.647'	4.498	0	-1.168	0	-143514.823	-69132.105	26.400	118.747200
17BL-39'	344 4 32'	3.854'	3.706	0	-1.057	0	-143511.117	-69133.162	24.175	89.592550
17BL-43'	251 58 1'	13.487'	-4.175	-1	-12.824	0	-143515.293	-69145.986	10.294	-42.987744
17BL-44'	162 25 10'	8.377'	-7.986	0	2.530	0	-143523.279	-69143.456	0.000	0.000000
TOTAL...		43.495		-1		0			TOTAL...	224.915948
									ムシセキ...	112.45

ヒリ NO... 17BL (5)

17BL-37'							-143534.986	-69139.747		
17BL-9'	73 18 41'	5.476'	1.573	-1	5.245	0	-143533.414	-69134.502	8.954	14.075688
17BL-10'	29 33 37'	10.005'	8.703	0	4.936	0	-143524.711	-69129.566	19.135	166.531905
17BL-11'	345 49 5'	4.200'	4.072	0	-1.029	0	-143520.639	-69130.595	23.042	93.827024
17BL-38'	345 26 45'	1.362'	1.318	0	-0.342	0	-143519.321	-69130.937	21.671	28.562378
17BL-44'	252 27 19'	13.130'	-3.958	0	-12.519	0	-143523.279	-69143.456	8.810	-34.869980
17BL-37'	162 25 10'	12.280'	-11.706	-1	3.709	0	-143534.986	-69139.747	0.000	0.000000
TOTAL...		46.453		-2		0			TOTAL...	268.127015
									ムシセキ...	134.06



\*\*\* 測点ケイサン (ハ"イウキヨホウ) \*\*\*

チクメイ ... ハマツ イキ ヲコウ

セリ NO... 17BL(6)

NO.	NO.	ANGLE	AZIMUTH	LENGTH	DX	*	DY	*	X	Y	DMD	2A	カ-フ"メツキ
17BL-56	17BL-45 ✓		162 23 20						-143576.838	-69282.950			
17BL-45	17BL-4 //	89 26 2	71 49 22	1.504 //	0.469	0	1.429	0	-143576.369	-69281.521	13.564	6.361516	
17BL-4	17BL-5 //	186 16 56	73 6 18	15.287 //	3.151	0	14.959	0	-143573.218	-69266.562	29.952	94.378752	
17BL-5	17BL-6 //	174 35 28	72 41 46	11.999 //	3.569	0	11.456	0	-143569.649	-69255.106	56.367	201.173823	
17BL-6	17BL-46 //	180 21 49	73 3 35	6.188 //	1.803	0	5.919	0	-143567.846	-69249.187	73.742	132.956826	
17BL-46	17BL-55 //	89 19 45	342 23 20	40.430 //	38.535	0	-12.232	-1	-143529.311	-69261.420	67.428	2598.337980	
17BL-55	17BL-17 //	90 0 0	252 23 20	6.381 //	-1.931	0	-6.082	0	-143531.242	-69267.502	49.113	-94.837203	
17BL-17	17BL-18 //	180 0 0	252 23 20	2.881 //	-0.872	0	-2.746	0	-143532.114	-69270.248	40.285	-35.128520	
17BL-18	17BL-19 //	181 4 18	253 27 38	5.762 //	-1.640	0	-5.524	0	-143533.754	-69275.772	32.015	-52.504600	
17BL-19	17BL-20 //	181 4 19	254 31 57	5.762 //	-1.537	0	-5.553	0	-143535.291	-69281.325	20.938	-32.181706	
17BL-20	17BL-21 //	181 4 18	255 36 15	5.762 //	-1.433	1	-5.581	1	-143536.723	-69286.905	9.805	-14.040760	
17BL-21	17BL-22 //	181 4 18	256 40 33	5.762 //	-1.328	0	-5.607	0	-143538.051	-69292.512	-1.382	1.835296	
17BL-22	17BL-56 //	181 4 18	257 44 51	2.633 //	-0.559	0	-2.573	0	-143538.610	-69295.085	-9.562	5.345158	
17BL-56	17BL-45 //	84 38 29	162 23 20	40.108 //	-38.228	0	12.135	0	-143576.838	-69282.950	0.000	0.000000	
TOTAL..	ツツカズ= 13	1980	0 0	150.459	-0.001	1	0.000	0					

ハ"イメツキ= 2811.696562  
 1/2= 1405.84 +0.00  
 メツキ= 1405.84 ✓

セリ NO... 17BL(7)

17BL-55	17BL-46 //		162 23 20						-143567.846	-69249.187			
17BL-46	17BL-47 //	90 40 15	73 3 35	0.848 //	0.247	0	0.811	0	-143567.599	-69248.376	13.044	3.221868	
17BL-47	17BL-54 //	89 19 45	342 23 20	40.440 //	38.545	-1	-12.235	-1	-143529.055	-69260.612	1.619	62.402736	
17BL-54	17BL-55 //	90 0 0	252 23 20	0.848 //	-0.257	1	-0.808	0	-143529.311	-69261.420	-11.425	2.924800	
17BL-55	17BL-46 //	90 0 0	162 23 20	40.430 //	-38.535	0	12.232	1	-143567.846	-69249.187	0.000	0.000000	
TOTAL..	ツツカズ= 4	360	0 0	82.566	0.000	0	0.000	0					

ハ"イメツキ= 68.549404  
 1/2= 34.27 +0.00

\*\*\* メンベキ ケイサツ (ハ"イオウキヨホウ) \*\*\*

チクメイ ... ハマツ イキ ヲシウカ

レイ NO... 17BL(8)

NO.	NO.	ANGLE	AZIMUTH	LENGTH	DX	*	DY	*	X	Y	DMD	2A	カ-フ"メンベキ
17BL-54	17BL-47 /		162 23 20						-143567.599	-69248.376			
17BL-47	17BL-7 /	98 40 15	73 3 35 /	7.962 /	2.320	0	7.617	0	-143565.279	-69240.759	19.853	46.058960	
17BL-7	17BL-48 /	180 13 2	73 16 37 //	5.03 <sup>0</sup> /	1.448	-1	4.818	0	-143563.832	-69235.941	32.288	46.720736	
17BL-48	17BL-53 /	89 6 43	342 23 20 //	40.611 /	38.708	0	-12.287	0	-143525.124	-69248.228	24.819	960.693852	
17BL-53	17BL-54 /	90 0 0	252 23 20 /	12.993 <sup>Z</sup> /	-3.931	0	-12.384	0	-143529.055	-69260.612	0.148	-0.581788	
17BL-54	17BL-47 /	90 0 0	162 23 20 /	40.440 /	-38.545	1	12.235	1	-143567.599	-69248.376	0.000	0.000000	
TOTAL..	ソツカクスウ= 5	540	0 0	107.037	0.000	0	-0.001	1					
											ハ"イメンベキ=	1052.891760	
											1/2=	526.44	+0.00
											メンベキ=	526.44	

レイ NO... 17BL(9)

17BL-53	17BL-48 /		162 23 20						-143563.832	-69235.941			
17BL-48	17BL-49 /	90 53 17	73 16 37 /	1.757 /	0.506	0	1.683	0	-143563.326	-69234.258	13.970	7.068820	
17BL-49	17BL-52 /	89 6 43	342 23 20 /	40.639 /	38.734	0	-12.296	1	-143524.592	-69246.553	3.358	130.068772	
17BL-52	17BL-53 /	90 0 0	252 23 20 /	1.757 /	-0.532	0	-1.675	0	-143525.124	-69248.228	-10.612	5.645584	
17BL-53	17BL-48 /	90 0 0	162 23 20 /	40.611 /	-38.708	0	12.287	0	-143563.832	-69235.941	0.000	0.000000	
TOTAL..	ソツカクスウ= 4	360	0 0	84.764	0.000	0	-0.001	1					
											ハ"イメンベキ=	142.783176	
											1/2=	71.39	+0.00
											メンベキ=	71.39	
												-0.01	
												71.38	

\*\*\* メンセキ ケイサン (ハ"イオウキヨホウ) \*\*\*

チクメイ ... ハマツ イキ シユウ

セリ NO... 17BL(8)

NO.	NO.	ANGLE	AZIMUTH	LENGTH	DX	*	DY	*	X	Y	DMD	2A'	カ-フ"メンセキ
17BL-54	17BL-47 //		162 23 20						-143567.599	-69248.376			
17BL-47	17BL-7 //	90 40 15	73 3 35 //	7.962 //	2.320	0	7.617	0	-143565.279	-69240.759	19.853	46.058960	
17BL-7	17BL-48 //	180 13 2	73 16 37 //	5.030 //	1.447	0	4.817	1	-143563.832	-69235.941	32.288	46.720736	
17BL-48	17BL-53 //	89 6 43	342 23 20 //	40.611 //	38.708	0	-12.287	0	-143525.124	-69248.228	24.819	960.693852	
17BL-53	17BL-54 //	90 0 0	252 23 20 //	12.992 //	-3.931	0	-12.383	-1	-143529.055	-69260.612	0.148	-0.581788	
17BL-54	17BL-47 //	90 0 0	162 23 20 //	40.440 //	-38.545	1	12.235	1	-143567.599	-69248.376	0.000	0.000000	
TOTAL..	ソツカスウ= 5	540 0 0		107.035	-0.001	1	-0.001	1			ハ"イメンセキ=	1052.891760	

1/2= 526.44 +0.00

メンセキ= 526.44

+ 0.01

526.45

\*\*\* ムネキ ケイサン (ハ"イオウキヨホウ) \*\*\*

チクメイ ... ハマツ イキ ヲシカク

レイ NO... 17BL(10)

NO.	NO.	ANGLE	AZIMUTH	LENGTH	DX	*	DY	*	X	Y	DMD	2A	カーブムネキ
17BL-52	17BL-49 //		162 23 20						-143563.326	-69234.258			
17BL-49	17BL-50 //	90 53 17	73 16 37 //	0.548 //	0.158	0	0.525	0	-143563.168	-69233.733	12.820	2.025560	
17BL-50	17BL-51 //	89 6 48	342 23 25 //	40.646 //	38.741	1	-12.297	0	-143524.426	-69246.030	1.048	40.601616	
17BL-51	17BL-52 //	89 59 55	252 23 20 //	0.549 //	-0.166	0	-0.523	0	-143524.592	-69246.553	-11.772	1.954152	
17BL-52	17BL-49 //	90 0 0	162 23 20 //	40.639 //	-38.734	0	12.296	-1	-143563.326	-69234.258	0.000	0.000000	
TOTAL..	ツツカクスク= 4	360	0 0	82.382	-0.001	1	0.001	-1			ハイムネキ=	44.581328	
											1/2=	22.29	+0.00
											ムネキ=	22.29	✓

レイ NO... 17BL(11)

17BL-51	17BL-50 //		162 23 25						-143563.168	-69233.733			
17BL-50	17BL- 8 //	90 53 12	73 16 37 //	7.664 //	2.205	0	7.340	-1	-143560.963	-69226.394	19.636	43.297380	
17BL- 8	17BL-36 //	180 2 4	73 13 41 //	48.513 //	13.931	1	46.470	0	-143547.031	-69179.924	73.445	1023.235740	
17BL-36	17BL-41 //	89 4 39	342 23 20 //	41.546 //	39.590	0	-12.570	1	-143507.432	-69192.493	107.346	4250.794254	
17BL-41	17BL-51 //	90 0 0	252 23 20 //	56.170 //	-16.994	0	-53.537	0	-143524.426	-69246.030	41.240	-700.832560	
17BL-51	17BL-50 //	90 0 5	162 23 25 //	40.646 //	-38.741	-1	12.297	0	-143563.168	-69233.733	0.000	0.000000	
TOTAL..	ツツカクスク= 5	540	0 0	194.539	0.000	0	0.000	0			ハイムネキ=	4616.494814	
											1/2=	2308.24	+0.00
											ムネキ=	2308.24	✓