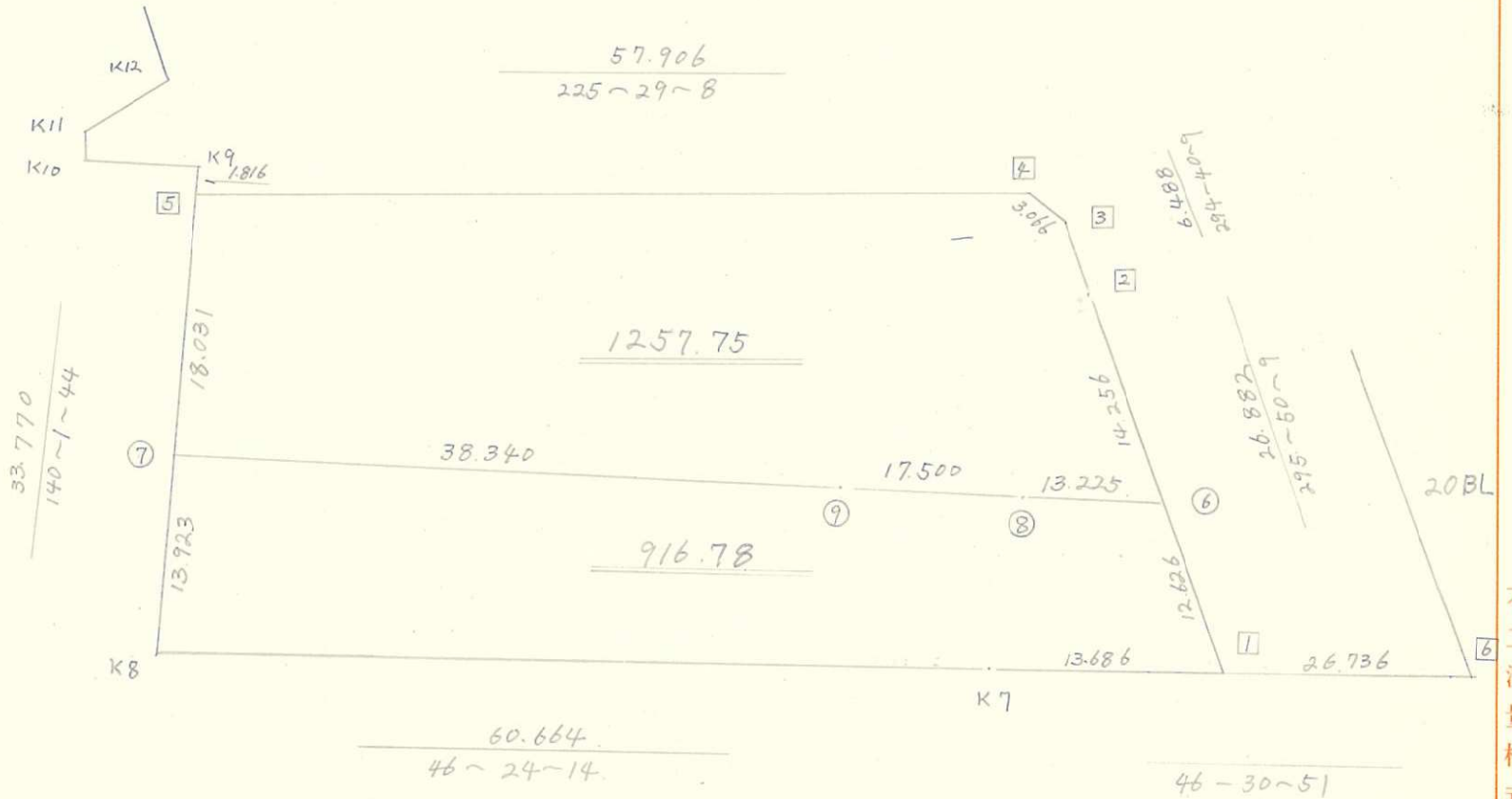


19 BL

87

略 図

計算面積 = 21174.53 m^2 ✓
 角切面積 =
 換地面積 =



不二測量株式会社

境界点最終番号 ⑨

***** メンセキ ケイサン (ハイオウキヨボウ) *****

セリ NO .. 19BL

NO	AZIMUTH	LENGTH	DX	DY	X	Y	DMD	2A
19B 1					-144350.933	-70359.924		
19B 2	295 50 9	26.882	11.715	-24.195	-144339.218	-70384.119	-14.265	-167.114475
19B 3	294 40 9	6.488 ✓	2.708	-5.896	-144336.510	-70390.015	-44.356	-120.116048
19B 4	258 56 35	3.066 /	-0.588	-3.009	-144337.098	-70393.024	-53.261	31.317468
19B 5	225 29 8	57.906	-40.597	-41.291	-144377.695	-70434.315	-97.561	3960.683917
K 8	140 1 44	31.95 ⁴ 3	-24.488	20.527	-144402.183	-70413.788	-118.325	2897.542600
K 7	46 24 14	60.664	41.832	43.934	-144360.351	-70369.854	-53.864	-2253.238848
19B 1	46 30 ⁵¹ 5	13.686	9.418	9.930	-144350.933	-70359.924	0.000	0.000000
TOTAL..		200.645					TOTAL ..	4349.074614
							メンセキ ..	2174.5373070

*** メンセキ ケイサン (ハイオウキヨボウ) ***

セリ NO .. 19BL-1

NO	AZIMUTH	LENGTH	DX	DY	X	Y	DMD	2A
19B 6					-144345.431	-70371.288		
19B 2	295 50 11 ⁹	14.256	6.213	-12.831	-144339.218	-70384.119	-3.022	-18.775686
19B 3	294 40 9	6.488	2.708	-5.896	-144336.510	-70390.015	-21.749	-58.896292
19B 4	258 56 35	3.066	-0.588	-3.009	-144337.098	-70393.024	-30.654	18.024552
19B 5	225 29 8	57.906	-40.597	-41.291	-144377.695	-70434.315	-74.954	3042.907538
19B 7	140 1 12 ¹⁴	19.031	-13.818	11.583	-144391.513	-70422.732	-104.662	1446.219516
19B 9	48 13 13 ✓	38.340 ✓	25.545	28.591	-144365.968	-70394.141	-64.488	-1647.345960
19B 8	48 11 22 ✓	17.500	11.667	13.044	-144354.301 ✓	-70381.097	-22.853	-266.625951
19B 6	47 52 40 ³⁵ ✓	13.225	8.870	9.809	-144345.431	-70371.288	0.000	0.000000
TOTAL..		168.812					TOTAL ..	2515.507717
							メンセキ ..	1257.7538585

*** メンセキ ケイサン (ハイオウキヨボウ) ***

セリ NO .. 19BL-2

NO	AZIMUTH	LENGTH	DX	DY	X	Y	DMD	2A
19B 1					-144350.933	-70359.924		
19B 6	295 50 ⁹ / ₄	12.626	5.502	-11.364	-144345.431	-70371.288	-1.434	-7.889868
19B 8	227 52 ³⁵ / ₄₀ ✓	13.225	-8.870	-9.809	-144354.301	-70381.097	-22.607	200.524090
19B 9	228 11 22 ✓	17.500	-11.667	-13.044	-144365.968	-70394.141	-45.460	530.381820
19B 7	228 13 13 ✓	38.340	-25.545	-28.591	-144391.513	-70422.732	-87.095	2224.841775
K 8	140 1 44	13.923	-10.670	8.944	-144402.183	-70413.788	-106.742	1138.937140
K 7	46 24 14	60.664	41.832	43.934	-144360.351	-70369.854	-53.864	-2253.238848
19B 1	46 30 ⁵¹ / ₅₇	13.686	9.418	9.930	-144350.933	-70359.924	0.000	0.000000
TOTAL..		169.964					TOTAL ..	1833.556109

メセキ .. 916.7780545
 + /

 916.78

***** オープン トラバース (ハネダシ) *****

NO.	NO.	ANGLE	AZIMUTH	LENGTH	DX	DY	X	Y	NO.
B	5 / LT	4	112 44 11				-144348.498	-70359.092	LT 4
LT	4 / G	7	253 55 30	2.704	-2.686	-0.314	-144351.184	-70359.406	G 7
A	5 / A	4	120 35 52				-144372.910	-70430.204	A 4
A	4 / G	6	281 14 20	8.333	-6.208	-5.558	-144379.118	-70435.762	G 6
A	4 / B	5	37 20 23				-144331.831	-70398.865	B 5
B	5 / 19B	2	259 16 10	16.493	-7.387	14.746	-144339.218	-70384.119	19B 2
B	5 / 19B	3	260 31 40	10.011	-4.679	8.850	-144336.510	-70390.015	19B 3
B	5 / 19B	4	274 42 0	7.865	-5.267	5.841	-144337.098	-70393.024	19B 4

*** 2 デンカン キヤフ ケイサン ***

NO.	NO.	X	Y	DX	DY	AZIMUTH	LENGTH	NO.
	19B 2	-144339.218	-70384.119					19B 2
19B 2	G 7	-144351.184	-70359.406	-11.966	24.713	115 50 10	27.458 ✓	G 7
	19B 4	-144337.098	-70393.024					19B 4
19B 4	G 6	-144379.118	-70435.762	-42.020	-42.738	225 29 7	59.935 ✓	G 6

*** コウデン ケイサン ***

	PNO		PX	PY	AZIMUTH	(AZIMUTH)	LENGTH	QX	QY	QNO
P1	20B	6	-144332.534	-70340.526	226 30 51	226 30 50 ⁵¹	26.736 _✓			
P3	19B	2	-144339.218	-70384.119	115 50 10 ⁹	115 50 9	26.882 _✓			
Q								-144350.933	-70359.924	19B 1
P2	K	7	-144360.351	-70369.854		46 30 57 ⁵¹	13.686 _✓			
P4	G	7	-144351.184	-70359.406		295 51 10 ⁹	0.576 _✓			

	PNO		PX	PY	AZIMUTH	(AZIMUTH)	LENGTH	QX	QY	QNO
P1	19B	4	-144337.098	-70393.024	225 29 7 ⁸	225 29 8 _✓	57.906			
P3	K	8	-144402.183	-70413.788	320 1 44 _✓	320 1 43 ⁴⁴	31.95 ₃ ⁴ _✓			
Q								-144377.695	-70434.315	19B 5
P2										
P4	K	9	-144376.303	-70435.482		140 1 39 ⁴⁴	1.816 _✓			

***** コウテン ケイサン *****

	PNO		PX	PY	AZIMUTH	(AZIMUTH)	LENGTH	QX	QY	QNO
P1	19B	8,	-144354.301	-70381.097	47 52 35	47 52 40 ³⁵	13.225			
P3	19B	1,	-144350.933	-70359.924	295 50 9,	295 50 11 ⁹	12.626 ✓			
Q								-144345.431	-70371.288	19B 6

P2										
P4	19B	2 /	-144339.218	-70384.119		115 50 11 ⁹	14.256,			

	PNO		PX	PY	AZIMUTH	(AZIMUTH)	LENGTH	QX	QY	QNO
P1	19B	9,	-144365.968	-70394.141	228 13 13	228 13 13 ✓	38.340			
P3	K	8 /	-144402.183	-70413.788	320 1 44	320 1 44,	13.923 ✓			
Q								-144391.513	-70422.732	19B 7

P2										
P4	19B	5	-144377.695	-70434.315		140 1 44 ⁴⁴	18.031 ✓			