

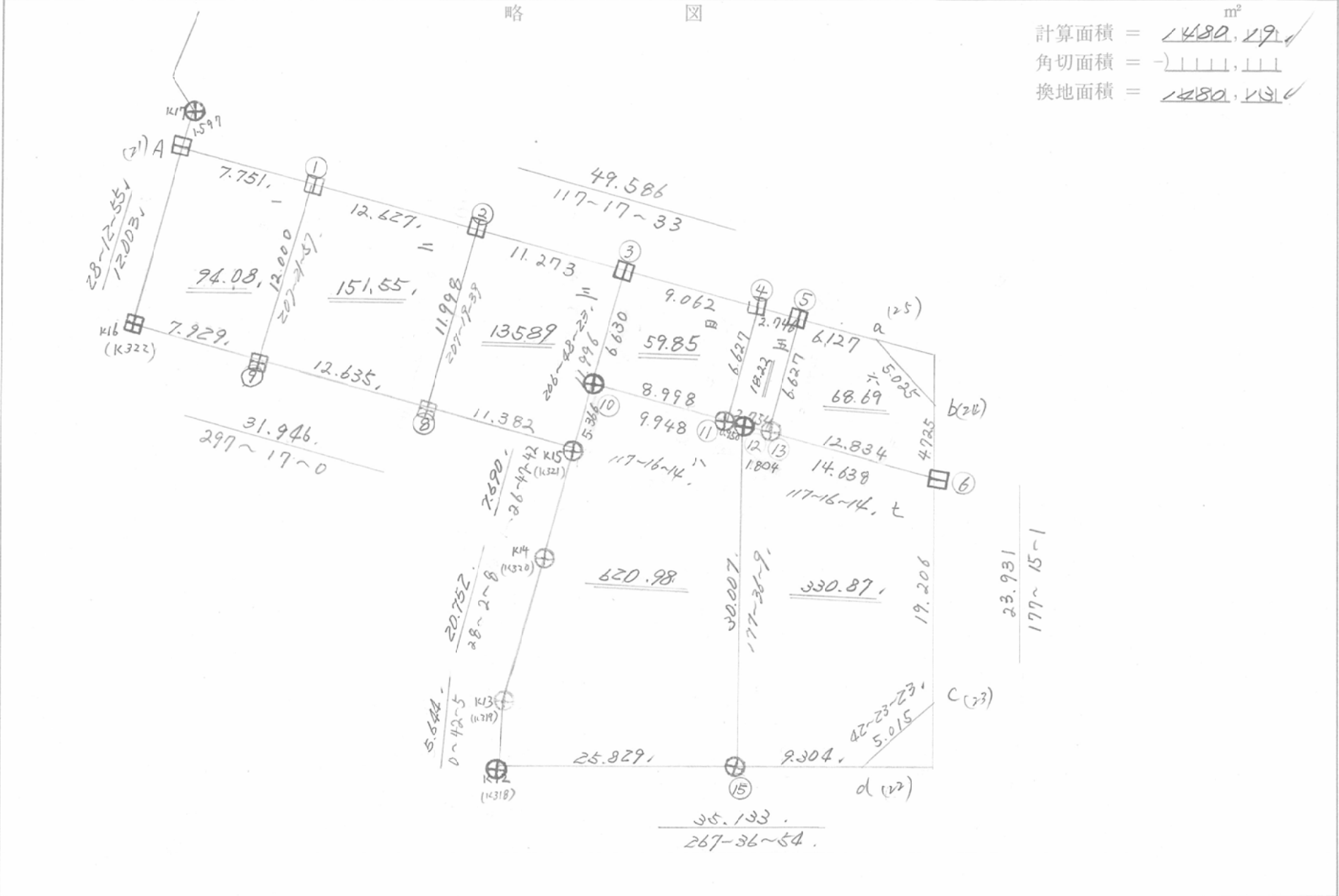
4 0 BL

街廓原子一覽表用紙

(40 BL) 111

略 図

計算面積 = $\frac{m^2}{1480, 119}$ ✓
 角切面積 = $\frac{m^2}{-1111, 111}$ ✓
 換地面積 = $\frac{m^2}{1480, 119}$ ✓



*** メンセキ ケイブン (ハ"イソクキヨホク) ***

チクメイ ... ハマツ イキ シツク

セイヤ NO... 40BL

NO.	AZIMUTH	LENGTH	DX	DY	X	Y	DMD	2A	
K.318 /					-143704.915	-69085.005			
40BL-22 /	87 36 54	35.133	1.462	35.103	-143703.453	-69049.902	35.034	51.219708	
40BL-23 /	42 23 23	5.015	3.704	3.381	-143699.749	-69046.521	73.518	272.310672	
40BL-24 /	357 15 1	23.931	23.903	-1.148	-143675.846	-69047.669	75.751	1810.676153	
40BL-25 /	327 32 25	5.025	4.240	-2.697	-143671.606	-69050.366	71.906	304.381440	
40BL-21 /	297 17 3 ³	49.586	22.737	-4.066	-143648.869	-69094.432	25.143	571.676391	
K.322 /	208 12 55	12.003	-10.577	-5.675	-143659.446	-69100.107	-24.598	260.173046	
K.321 /	117 17 ⁰ / ₂	31.946	-14.644	28.392	-143674.090	-69071.715	-1.881	27.545364	
K.320 /	206 47 ⁴² / ₅₄	7.690	-6.864	-3.467	-143680.954	-69075.182	23.044	-158.174016	
K.319 /	208 2 0	20.752	-18.317	-9.754	-143699.271	-69084.936	9.823	-179.927891	
K.318 /	180 42 ⁵ / ₂	5.644	-5.644	-0.069	-143704.915	-69085.005	0.000	0.000000	
TOTAL...							196.725	TOTAL...	2960.380867
								メセキ...	1480.19 /

*** メンセキ ケイサン (ハイイロキヨボウ) ***

チクメイ ... ハマツツ イキ シヨウケン

レイ NO... 40BL(1)

NO.	NO.	ANGLE	AZIMUTH	LENGTH	DX	*	DY	*	X	Y	DMD	ZA	カ-フ"メ
40BL-21	K.322✓		208 12 55						-143659.446	-69100.107			
K.322	40BL- 9/	89 4 5	117 17 0/	7.929/	-3.635	0	7.047	0	-143663.081	-69093.060	1.372	-4.987220	
40BL- 9	40BL- 1/	90 4 57	27 21 57/	12.000/	10.657	0	5.516	0	-143652.424	-69087.544	13.935	148.505295	
40BL- 1	40BL-21/	89 55 36	297 17 33/	7.751/	3.554	1	-6.888	0	-143648.869	-69094.432	12.563	44.661465	
40BL-21	K.322/	90 55 22	208 12 55/	12.003/	-10.577	0	-5.675	0	-143659.446	-69100.107	0.000	0.000000	
TOTAL..	ツツカクスケ= 4	360	0 0	39.683	-0.001	1	0.000	0			ハイイロメンセキ=	188.179540	
											1/2=	.94.08	+0.
											メンセキ=	94.08	

レイ NO... 40BL(2)

40BL- 1	40BL- 9/		207 21 57						-143663.081	-69093.060			
40BL- 9	40BL- 8/	89 55 3	117 17 0/	12.635/	-5.792	0	11.229	0	-143663.873	-69081.831	5.713	-33.089696	
40BL- 8	40BL- 2/	90 2 39	27 19 39/	11.998/	10.659	0	5.508	0	-143658.214	-69076.323	22.450	239.294550	
40BL- 2	40BL- 1/	89 57 54	297 17 33/	12.627/	5.790	0	-11.221	0	-143652.424	-69087.544	16.737	96.907230	
40BL- 1	40BL- 9/	90 4 24	207 21 57/	12.000/	-10.657	0	-5.516	0	-143663.081	-69093.060	0.000	0.000000	
TOTAL..	ツツカクスケ= 4	360	0 0	49.260	0.000	0	0.000	0			ハイイロメンセキ=	303.112084	
											1/2=	151.55	+0.
											メンセキ=	151.55	
											10.01		
											5/56 /		

BAI MENSEKI KEISANSHO

FUJI SOKURYO K.K.

40BL 3

No.	AZIMUTH	LENGTH	DX	dx	DY	dy	DMD	2S
(8)								
(2)	27-19-39 ✓	11.998 ✓	10.659	0	5.508	0	5.508	58.7097
(3)	117-17-33 ✓	11.273 ✓	-5.169	0	10.018	0	21.034	-108.7247
(K15)	206-48-23 ✓	11.996 ✓	-10.707	0	-5.410	0	25.642	-274.5488
(8)	297-17- 0 ✓	11.382 ✓	5.217	0	-10.116	0	10.116	52.7751

BAIMENSEKI -271.7887

MENSEKI 135.894

BAI MENSEKI KEISANSHO

FUJI SOKURYO K.K.

40BL 4

No.	AZIMUTH	LENGTH	DX	dx	DY	dy	DMD	2S
(10)								
(3)	26-48-23 ✓	6.630 ✓	5.918	0	2.990	0	2.990	17.6948
(4)	117-17-33 ✓	9.062 ✓	-4.155	0	8.053	0	14.033	-58.3071
(11)	207-21-41 ✓	6.627 ✓	-5.886	0	-3.046	0	19.040	-112.0694
(10)	297-16-14 ✓	8.998 ✓	4.123	0	-7.998	1	7.997	32.9716

BAIMENSEKI -119.7101

MENSEKI 59.855

BAI MENSEKI KEISANSHO

FUJI SOKURYO K.K.

40BL 5

No.	AZIMUTH	LENGTH	DX	dx	DY	dy	DMD	2S
(11)								
(4)	27-21-41/	6.627 _✓	5.886	0	3.046	0	3.046	17.9287
(5)	117-17-33 _✓	2.746 _✓	-1.259	0	2.440	0	8.532	-10.7417
(13)	207-17-45 _✓	6.627 _✓	-5.889	0	-3.039	1	7.934	-46.7233
(11)	297-16-14 _✓	2.754 _✓	1.262	0	-2.448	0	2.448	3.0893

BAIMENSEKI -36.4470

MENSEKI 18.223

BAI MENSEKI KEISANSHO

FUJI SOKURYO K.K.

4OBL 6

No.	AZIMUTH	LENGTH	DX	dx	DY	dy	DMD	2S
(13)								
(5)	27-17-45 ✓	6.627 ✓	5.889	0	3.039	0	3.039	17.8966
(a)	117-17-33 /	6.127 ✓	-2.809	0	5.445	0	11.523	-32.3681
(b)	147-32-25 ✓	5.025 ✓	-4.240	0	2.697	0	19.665	-83.3796
(6)	177-15- 1 ✓	4.725 ✓	-4.720	0	0.227	0	22.589	-106.6200
(13)	297-16-14 ✓	12.834 ✓	5.880	0	-11.408	0	11.408	67.0790

BAIMENSEKI -137.3921

MENSEKI 68.696

*** メンセキ カイワン (ハ"イメキヨホク) ***

チクメイ ... ハマツ イキ シユカク

レイ NO... 40BL(7)

NO.	NO.	ANGLE	AZIMUTH	LENGTH	DX	*	DY	*	X	Y	DMD	2A	カ-フ"メ
40BL-12	40BL-15 /		177 36 9 /						-143703.840	-69059.198			
40BL-15	40BL-22 /	90 0 45	87 36 54 /	9.304 /	0.387	0	9.296	0	-143703.453	-69049.902	10.551	4.083237	
40BL-22	40BL-23 /	134 46 29	42 23 23 /	5.015 /	3.704	0	3.381	0	-143699.749	-69046.521	23.228	86.036512	
40BL-23	40BL- 6 /	134 51 38	357 15 1 /	19.206 /	19.184	-1	-0.921	0	-143680.566	-69047.442	25.688	492.772904	
40BL- 6	40BL-12 /	120 1 13	297 16 14 /	14.638 /	6.707	0	-13.011	0	-143673.859	-69060.453	11.756	78.847492	
40BL-12	40BL-15 /	60 19 55	177 36 9 /	30.007 /	-29.981	0	1.255	0	-143703.840	-69059.198	0.000	0.000000	
TOTAL..	ソツカクスク= 5	540 0 0		78.170	0.001	-1 /	0.000	0 /			ハ"イメキキ=	661.740145	

1/2= 330.87 +0.

メンセキ= 330.87

~~0.02 /~~
330.89 /

レイ NO... 40BL(8)

K.319	K.318 /		180 42 5						-143704.915	-69085.005			
K.318	40BL-15 /	86 54 49	87 36 54 /	25.829 /	1.075	0	25.807	0	-143703.840	-69059.198	25.738	27.668350	
40BL-15	40BL-12 /	89 59 15	357 36 9 /	30.007 /	29.981	0	-1.255	0	-143673.859	-69060.453	50.290	1507.744490	
40BL-12	40BL-10 /	119 40 5	297 16 14 /	9.948 /	4.558	0	-8.842	0	-143669.301	-69069.295	40.193	183.199694	
40BL-10	K.321 /	89 32 9	206 48 23 /	5.366 /	-4.789	0	-2.420	0	-143674.090	-69071.715	28.931	-138.550559	
K.321	K.320 /	179 59 19	206 47 42 /	7.690 /	-6.864	0	-3.467	0	-143680.954	-69075.182	23.044	-158.174016	
K.320	K.319 /	181 14 26	208 2 8 /	20.752 /	-18.317	0	-9.754	0	-143699.271	-69084.936	9.823	-179.927891	
K.319	K.318 /	152 39 57	180 42 5 /	5.644 /	-5.644	0	-0.069	0	-143704.915	-69085.005	0.000	0.000000	
TOTAL..	ソツカクスク= 7	900 0 0		105.236	0.000	0	0.000	0			ハ"イメキキ=	1241.960068	

1/2= 620.98 +0.

メンセキ= 620.98

~~0.02 /~~
621.00 /