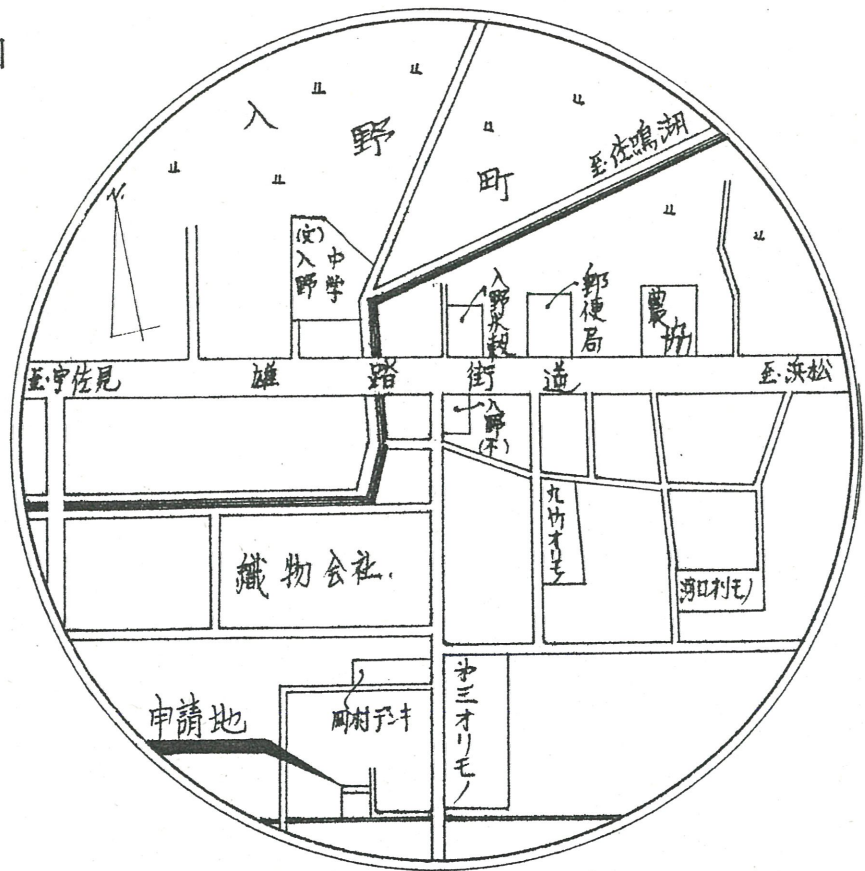
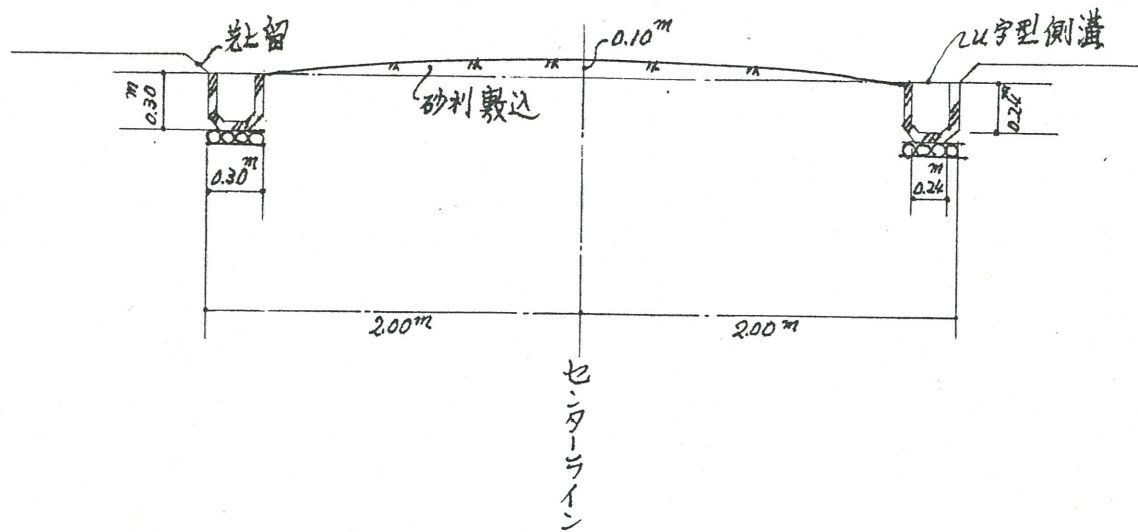


附近見取図

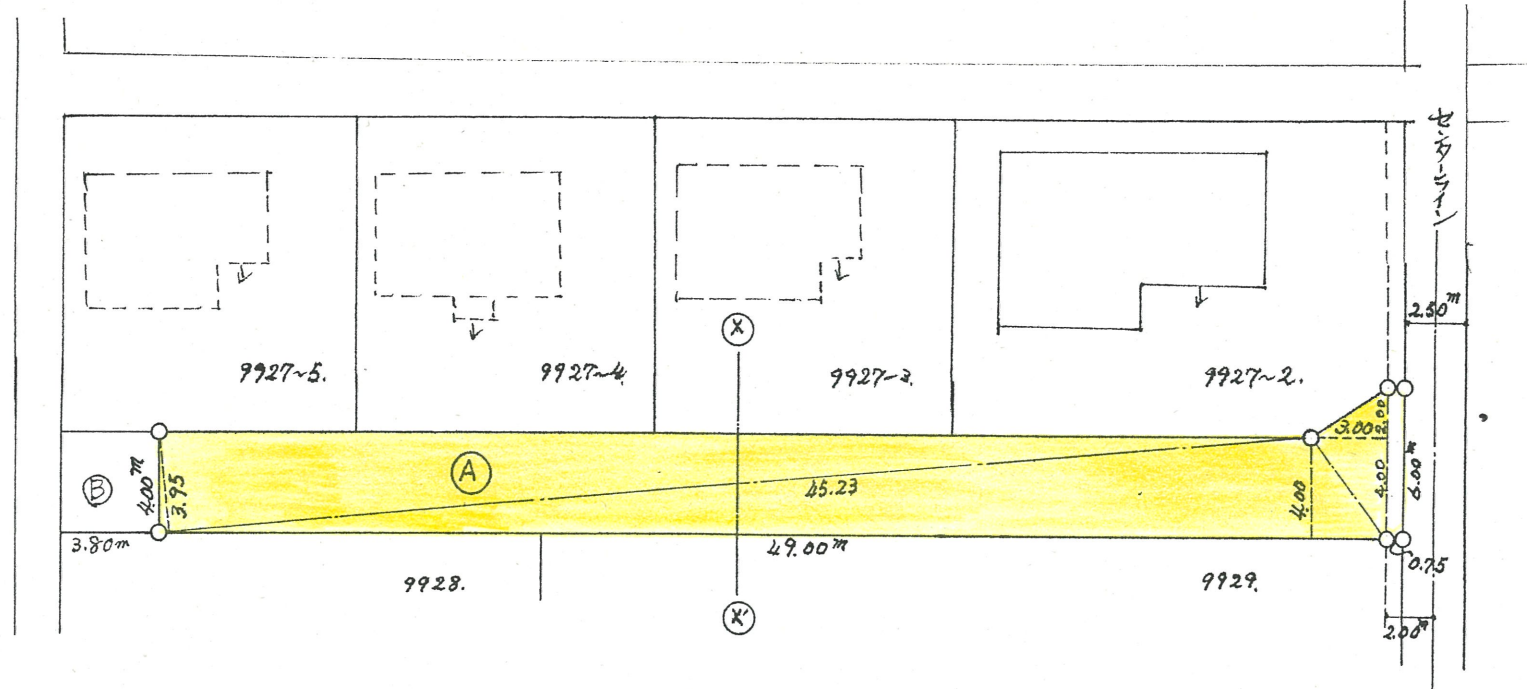
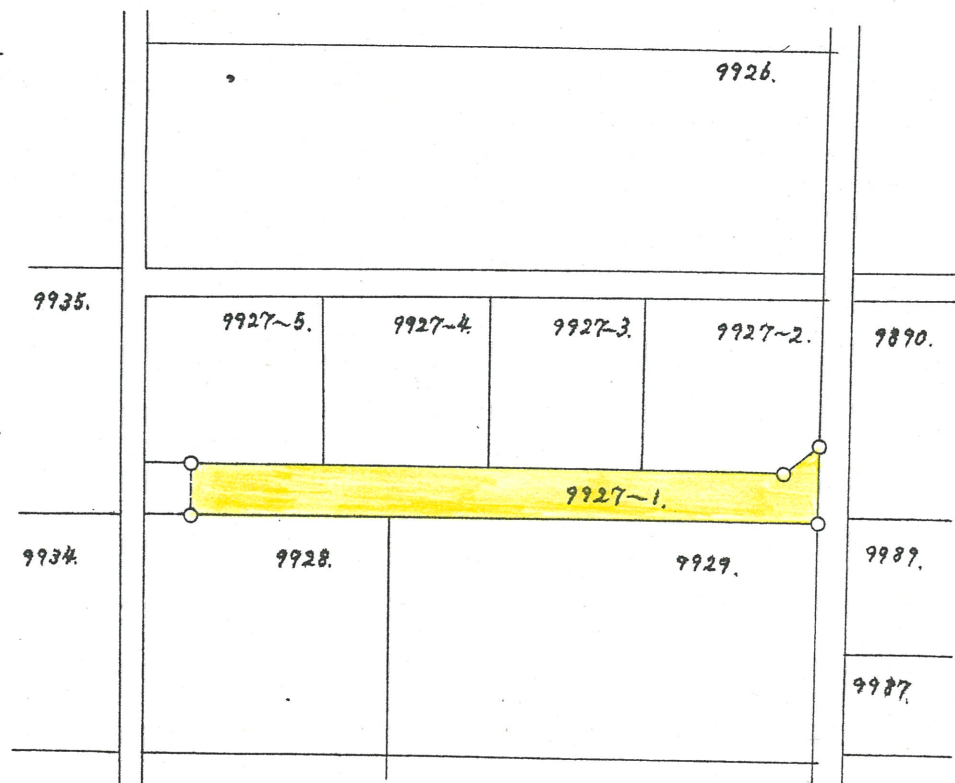
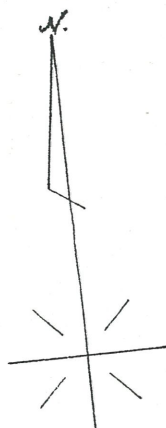


断面図 (X-X) S: 1/40

道路位置指定図	指定番号	45-144
入野町 地内	指定年月日	S45.12.23



地籍図 (実測図及び公図写) S: 1/600, 1/300



全長 49.00m  
 幅員 4.00m  
 入口 6.00m  
 求積  
 ①  $45.23 \times 3.95 \times \frac{1}{2} = 89.3292$   
 $49.00 \times 4.00 \times \frac{1}{2} = 98.0000$   
 $6.00 \times 3.00 \times \frac{1}{2} = 9.0000$   
 $6.00 \times 0.75 = 4.5000$  (拡張部分)  
 計 = 200.8292 m<sup>2</sup>  
 ②  $3.80 + 4.00 = 15.20$   
 ①+②  $200.82 + 15.20 = 216.02$   
 地積  $\frac{216.02}{200.82} \text{ m}^2$